

INDEX OF SHEETS

SHEET NO.	TITLE PAGE
1	TITLE PAGE
2	TYPICAL CROSS-SECTION OF IMPROVEMENT
3	BANKING AND WIDENING TABLES
4	QUANTITY SHEET - ITEMS
5	DRAINAGE
6-11	EARTHWORK SHEETS
12-22	PLAN AND PROFILE
23	BRIDGE DETAILS 156 + 45.7
24	STANDARD STRUCTURE SHEET
25	SSB-2 BRIDGE DETAILS
26	SB 50-1
27	SB 11
28	SLAG-50
29	SB 20
30	S 28 PIPE CULVERTS
31	S 30 GUARD RAIL
32	S 30A MARKERS
33	S 40 BARRICADES, SIGNS & LIGHTS
34-56	S 41 TYPICAL GRADING

STANDARD STRUCTURE SHEETS APPROVED BY THE CHIEF ENGINEER VERMONT STATE DEPT. OF HIGHWAYS

S 28	APRIL 26, 1941
S 30	NOV. 10, 1947
S 30A	APRIL 19, 1941
S 40	DEC. 18, 1945

DOUBLE TACK COAT OF REFINED TAR WITH PEA-STONE SEAL, ITEM 29A

STATE OF VERMONT
STATE HIGHWAY DEPARTMENT

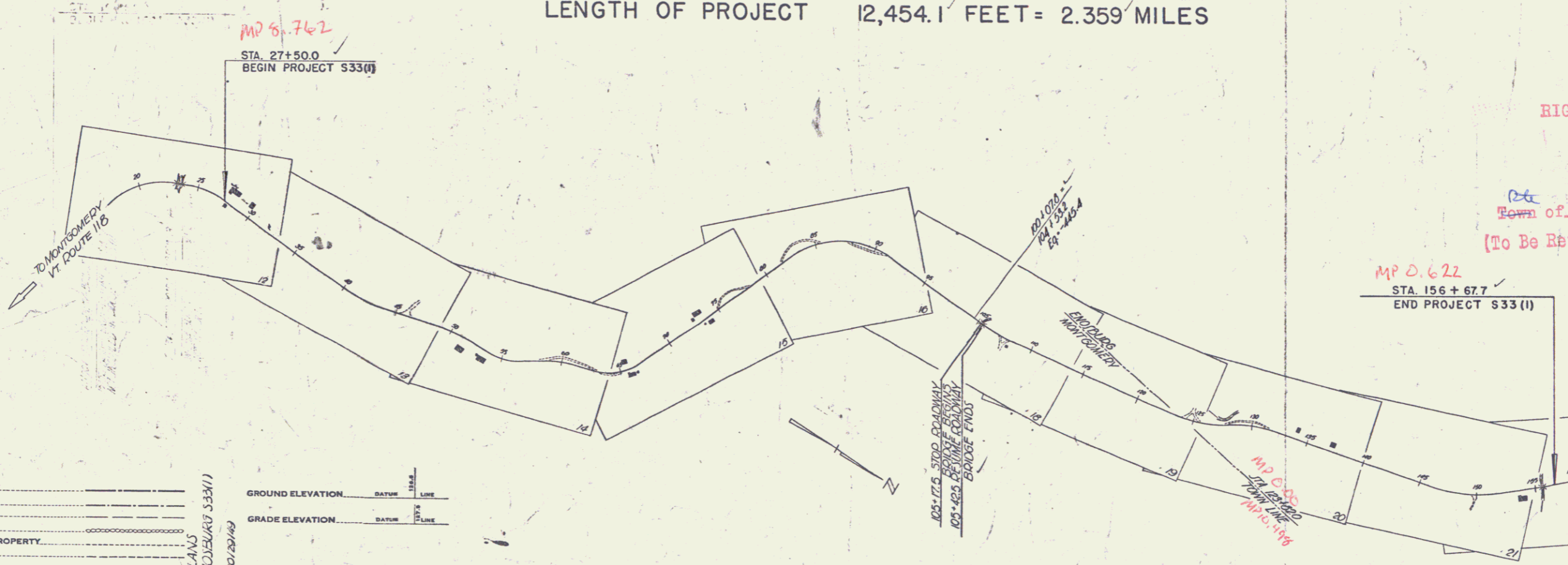
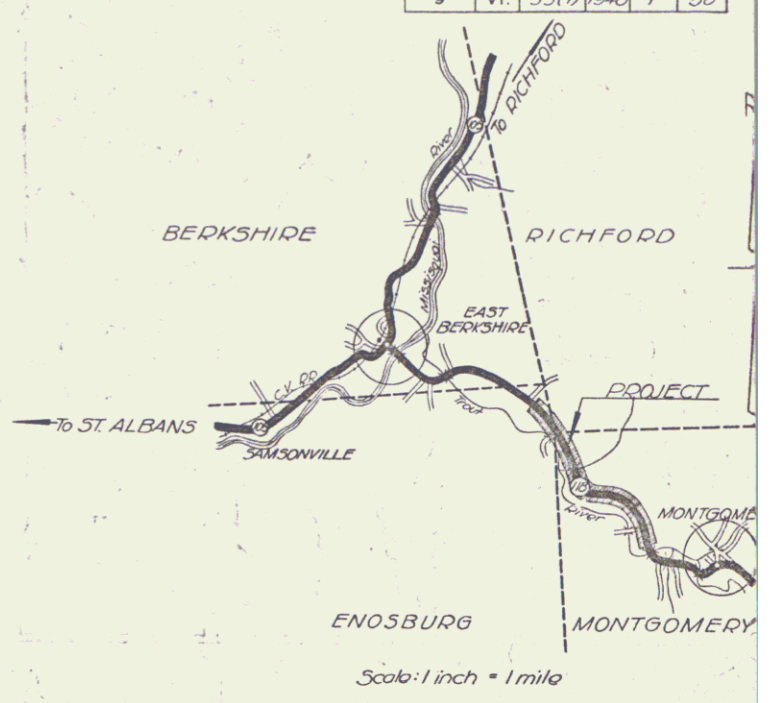
PLAN AND PROFILE OF PROPOSED STATE HIGHWAY

TOWNS OF MONTGOMERY-ENOSBURG

LOWELL - E. BERKSHIRE ROAD - VERMONT ROUTE 118
BEGINNING AT A POINT 9,168.4 FEET SOUTHERLY FROM THE MONTGOMERY-ENOSBURG TOWN LINE, AND EXTENDING NORTHWESTERLY 12,454.1 FT.
LENGTH OF ROADWAY 12,429.1 FEET = 2.354 MILES
LENGTH OF BRIDGE 25.0 FEET = 0.005 MILES
LENGTH OF PROJECT 12,454.1 FEET = 2.359 MILES

POST WAR F.A. SEC

FED. ROAD DIST. NO.	STATE	PROJ. NO.	FISCAL YEAR	SHEET NO.	TOTAL SHEETS
9	VT.	33(1)	1948	1	56



SYMBOL	DESCRIPTION
---	COUNTY LINE
---	TOWN LINE
---	FENCE LINE
---	STONE WALL
---	UNFENCED PROPERTY
---	GUARD RAIL
---	TRAVELED WAY
---	RAILROAD
---	RETAINING WALL
---	CENTER LINE
---	SURVEY LINE
---	CULVERT
---	DROP INLET
---	TROLLEY POLE
---	POWER POLE
---	TELEPHONE POLE
---	TREES
---	HEDGE

CURVE DATA

Δ	DEFLECTION ANGLE
D	DEGREE OF CURVE
R	RADIUS OF CURVE
T	TANGENT DISTANCE
L	LENGTH OF CURVE
E	EXTERNAL DISTANCE
P.I.	POINT OF INTERSECTION
P.C.	POINT OF CURVE
P.T.	POINT OF TANGENT
P.O.T.	POINT ON TANGENT

SCALES

1" = 100'	TITLE
1" = 2'	TYPICAL
1" = 50'	PLAN
1" = 20'	HORIZONTAL
1" = 10'	PROFILE
1" = 5'	CROSS SECTIONS

RECORD PLANS
MONTGOMERY-ENOSBURG 533(1)
Prepared By: N.L.S. Jr. 12/25/49
Contractors: Blay & Co.
Resident Eng: H.D. Jones
Inspector: A.C. Jones

RIGHT-OF-WAY DIVISION
TOWN FILE
PERPETUAL
Town of VT 118
(To Be Returned To R.O.W. Division)

MP 0.622
STA 156 + 67.7
END PROJECT 533 (1)

APPROVED: 29 June 48
H.E. August
COMMISSIONER OF HIGHWAYS

Pin # 00R516
Date 6/29/1948

THESE PLANS ARE SUBJECT TO SUCH REVISIONS AS MAY BE REQUIRED BY THE PUBLIC ROADS ADMINISTRATION OR THE COMMISSIONER OF HIGHWAYS.
CONSTRUCTION IS TO BE CARRIED ON IN ACCORDANCE WITH THE PLANS AND THE STANDARD ROAD AND BRIDGE SPECIFICATIONS OF 1936, AS APPROVED DECEMBER 29, 1936 BY THE PUBLIC ROADS ADMINISTRATION, INCLUDING ALL SUBSEQUENT APPROVED REVISIONS AND SUCH REVISED SPECIFICATIONS AND SPECIAL PROVISIONS AS ARE SUBMITTED WITH THE PLANS.

APPROVED 29 June 48 H.E. August HIGHWAY ENGINEER	APPROVED 29 June 48 H.E. August DISTRICT HIGHWAY COMMISSIONER	SERIES 5 No. 33(1) FILED SHEET 1 OF 56
--	---	---