

INDEX OF SHEETS

| | |
|-------------|--|
| SHEET NO. 1 | TITLE PAGE |
| 2 | TYPICAL CROSS-SECTION OF IMPROVEMENT DOUBLE TRACK COAT OF REFINED TAR WITH PEASTONE SEAL, ITEM 316 A (GROUP 501) |
| 3 | BANKING AND WIDENING TABLES |
| 4 | QUANTITY SHEET (ITEMS) |
| 5 | QUANTITY SHEET (DRAINAGE) |
| 6-7 | EARTHWORK SHEETS |
| 8-13 | PLAN AND PROFILE SHEETS |
| 14-26 | CROSS-SECTIONS |
| 27 | PRELIMINARY INFORMATION SHEET |
| 28 | BRIDGE PLAN AND SECTION |
| 29 | DETAILS OF ABUTMENTS NOS. 1 AND 2 |
| 30 | DETAILS OF PIERS NOS. 1 AND 2 |
| 31-35 | CHANNEL SECTIONS |
| 36 | EARTHWORK SHEET |
| 37 | PRELIMINARY INFORMATION SHEET |
| 38 | BRIDGE PLAN AND SECTION |
| 39 | DETAILS OF ABUTMENT NO. 1 |
| 40 | DETAILS OF PIERS NOS. 1 AND 2 |
| 41 | DETAILS OF ABUTMENT NO. 2 |
| 42-44 | CHANNEL SECTIONS |
| 45 | EARTHWORK SHEET |
| 46 | PRELIMINARY INFORMATION SHEET |
| 47 | BRIDGE PLAN AND SECTION |
| 48 | DETAILS OF ABUTMENT NO. 1 |
| 49 | DETAILS OF PIER NO. 1 |
| 50 | DETAILS OF PIER NO. 2 |
| 51 | DETAILS OF ABUTMENT NO. 2 |
| 52 | BEAM LAYOUT AND REINFORCING STEEL SUPERSTRUCTURE |
| 53-55 | CHANNEL SECTIONS |
| 56 | EARTHWORK SHEET |
| 57 | STANDARD STRUCTURE SHEET S 40 TYPICAL GRADING |
| 58 | STANDARD STRUCTURE SHEET S 41 T.W.O. CABLE GUARD RAIL |
| 59 | STANDARD STRUCTURE SHEET S 45-49 CONSTRUCTION DETAILS |
| 60 | STANDARD STRUCTURE SHEET S 47-48 PIPE CULVERTS |
| 61 | STANDARD STRUCTURE SHEET SB 5-S1 BRIDGE RAILING DETAILS |
| 62 | STANDARD STRUCTURE SHEET SB 5-S1 BARRICADES, SIGNS AND LIGHTS (BRIDGE) |
| 63 | STANDARD STRUCTURE SHEET SB 5-S1 DETAILS A, D, I, K, AND L |
| 64 | STANDARD STRUCTURE SHEET SB 20 SUPERSTRUCTURE |
| 65 | STANDARD STRUCTURE SHEET SB 20-30 (H-20) SUPERSTRUCTURE |
| 66 | STANDARD STRUCTURE SHEET (END AND ANCHORAGE AT BRIDGE APPROACH) |
| 67 | STANDARD STRUCTURE SHEET S 51-56 STEEL BEAM GUARD-RAIL |
| 68 | STANDARD STRUCTURE SHEET S 52-56 STEEL BEAM GUARD-RAIL |

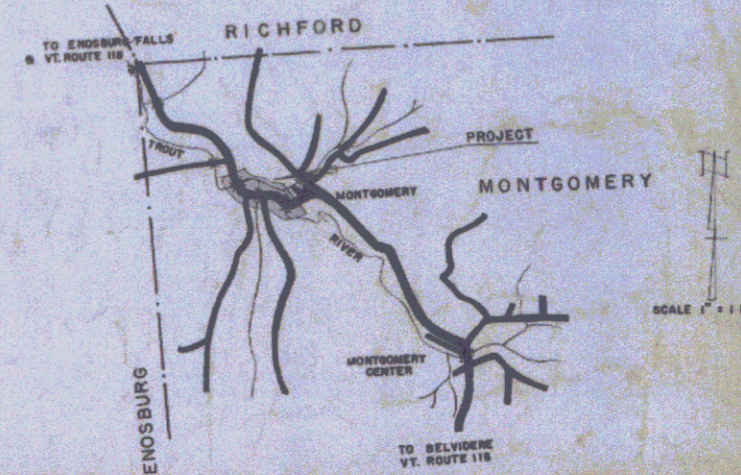
**STATE OF VERMONT
STATE HIGHWAY DEPARTMENT**

**PLAN AND PROFILE OF PROPOSED
STATE HIGHWAY**

**TOWN OF MONTGOMERY
COUNTY OF FRANKLIN
VERMONT ROUTE 118**

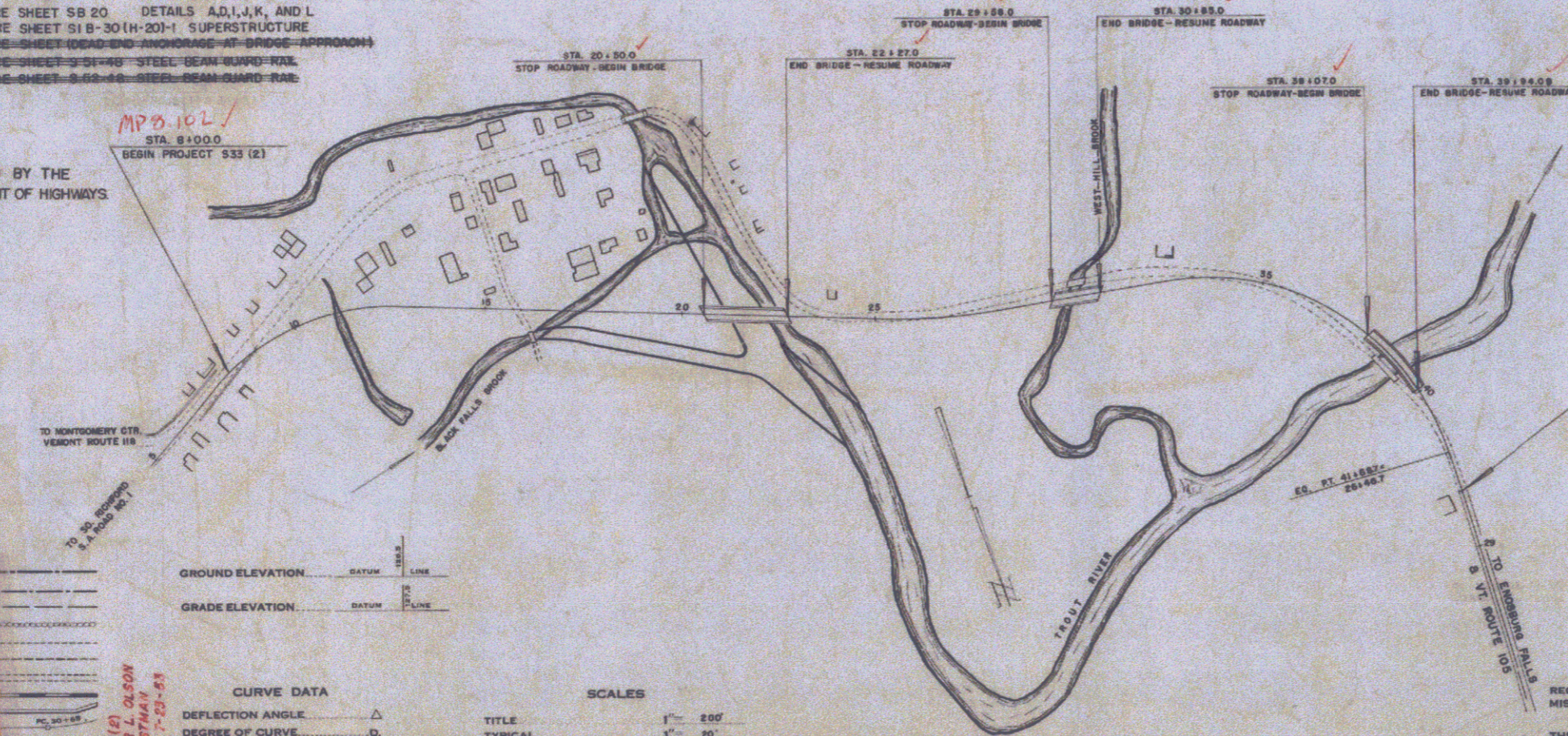
BEGINNING AT A POINT APPROXIMATELY 500 FT. SOUTHWESTERLY OF THE INTERSECTION OF ROUTE 118 AND STATE AID ROAD NO. 1, TO SOUTH RICHFORD AND EXTENDING NORTHWESTERLY 0.658 MILE WITH TWO BRIDGES OVER TROUT RIVER; ONE BRIDGE OVER WEST HILL BROOK, APPROXIMATELY 1.8, 2.0 AND 2.1 MILES SOUTHERLY RESPECTIVELY OF THE MONTGOMERY-ENOSBURG TOWN LINE.

LENGTH OF BRIDGES 491.09 FEET = 0.093 MILE
LENGTH OF ROADWAY 2,981.11 FEET = 0.565 MILES
LENGTH OF PROJECT 3,472.20 FEET = 0.658 MILES



| | | | |
|----------------------------------|------------------------------------|---|--------------------------------------|
| PROJECT NAME & NUMBER | | TYPE | PAVEMENT AREA |
| MONTGOMERY S 33 (2) | | DEL TACK COAT | 9074 S.Y. |
| RECORD PLANS | | | |
| MATERIALS | | | |
| SUB-BASE OF GRAVEL | LOCAL RIVER GRAVEL | ACCGMP NEW ENGL. MET. CULY CO., BOSTON, MASS. | |
| CR. GRAVEL | LEWIS & SCOTT CRUSHER, BAKERSFIELD | BIT. CONC. | MUNICIPAL PLANT, BURLINGTON |
| TAR | KOPPERS, EVERETT, MASS. | BIT. CONC. AGG. | KIRBY & STANLEY PLANTS, BURL. |
| FEASTONE CONC. AGG. | NADEAU PLANT, JOHNSON | GUARD RAIL | BETHLEHEM ST. CO., SPARROWS PT. N.J. |
| CEMENT | LEHIGH, ALSEN, N.Y. | GRANITE CURB | FLETCHER, CHELMSFORD, MASS. |
| REIN. STEEL | VT. STEEL | RCP | VT. CONC. PIPE CO., WINDSOR |
| CONTRACTOR | OSCAR L. OLSON | CONTRACT DATED | JULY 2 1951 |
| RES. ENGINEER | H.F. EARLE - H.G. BAREIS | CONTRACT STARTED | JULY 3 1951 |
| INSPECTORS | T.P. PHILLO - S.R. JENKINS | CONTRACT COMPLETED | JULY 23 1953 |
| RECORD PLANS | K. EASTMAN | CONTRACT ACCEPTED | JULY 23 1953 |

STANDARD STRUCTURE SHEETS APPROVED BY THE CHIEF ENGINEER, VERMONT STATE DEPARTMENT OF HIGHWAYS.
S 40 JUNE 10, 1950



CURVE DATA

| | |
|-----------------------|----------|
| DEFLECTION ANGLE | Δ |
| DEGREE OF CURVE | D |
| RADIUS OF CURVE | R |
| TANGENT DISTANCE | T |
| LENGTH OF CURVE | L |
| EXTERNAL DISTANCE | E |
| POINT OF INTERSECTION | P. I. |
| POINT OF CURVE | P. C. |
| POINT OF TANGENT | P. T. |
| POINT ON TANGENT | P. O. T. |

SCALES

| | |
|--------------------|----------------|
| TYPICAL | 1" = 200' |
| PLAN | 1" = 30' & 80' |
| PROFILE HORIZONTAL | 1" = 50' & 20' |
| PROFILE VERTICAL | 1" = 5' & 20" |
| CROSS SECTIONS | 1" = 5' & 10" |

MONTGOMERY
PROJECT S 33 (2)
DESIGNED BY OSCAR L. OLSON
CHECKED BY H.F. EARLE
DATE JULY 23 1951
LOCATION N.W. From Intersection Route 118 & 105
Toward Enosburg & Route 118

APPROVED DEC 15 1950
APPROVED DEC 15 1950
APPROVED DEC 27 1950
PROJECT S No. 33(2) FILED
SHEET 1 OF 68

Pin # 00R515

APPROVED DEC. 15, 1950
H.E. August
CHIEF ENGINEER

DEPARTMENT OF COMMERCE
BUREAU OF PUBLIC ROADS
RECOMMENDED FOR APPROVAL

THESE PLANS ARE SUBJECT TO SUCH REVISIONS AS MAY BE REQUIRED BY THE BUREAU OF PUBLIC ROADS OR THE COMMISSIONER OF HIGHWAYS.
CONSTRUCTION IS TO BE CARRIED ON IN ACCORDANCE WITH THE PLANS AND THE STANDARD ROAD AND BRIDGE SPECIFICATIONS OF 1948, AS APPROVED JULY 25, 1948 BY THE BUREAU OF PUBLIC ROADS INCLUDING ALL SUBSEQUENT APPROVED REVISIONS AND SUCH REVISED SPECIFICATIONS AND SPECIAL PROVISIONS AS ARE SUBMITTED WITH THE PLANS.

| PROJ. NO. | WEEK | PROJ. NO. | FISCAL YEAR | SHEET NO. | TOTAL SHEETS |
|-----------|------|-----------|-------------|-----------|--------------|
| 33 | Vt. | | | 8 | 68 |

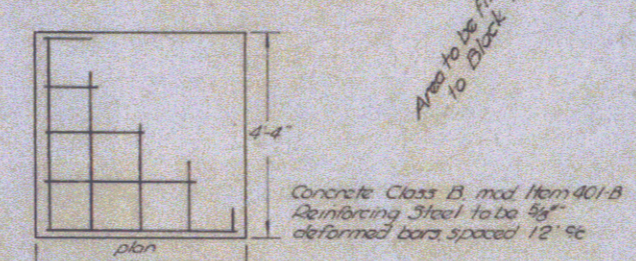
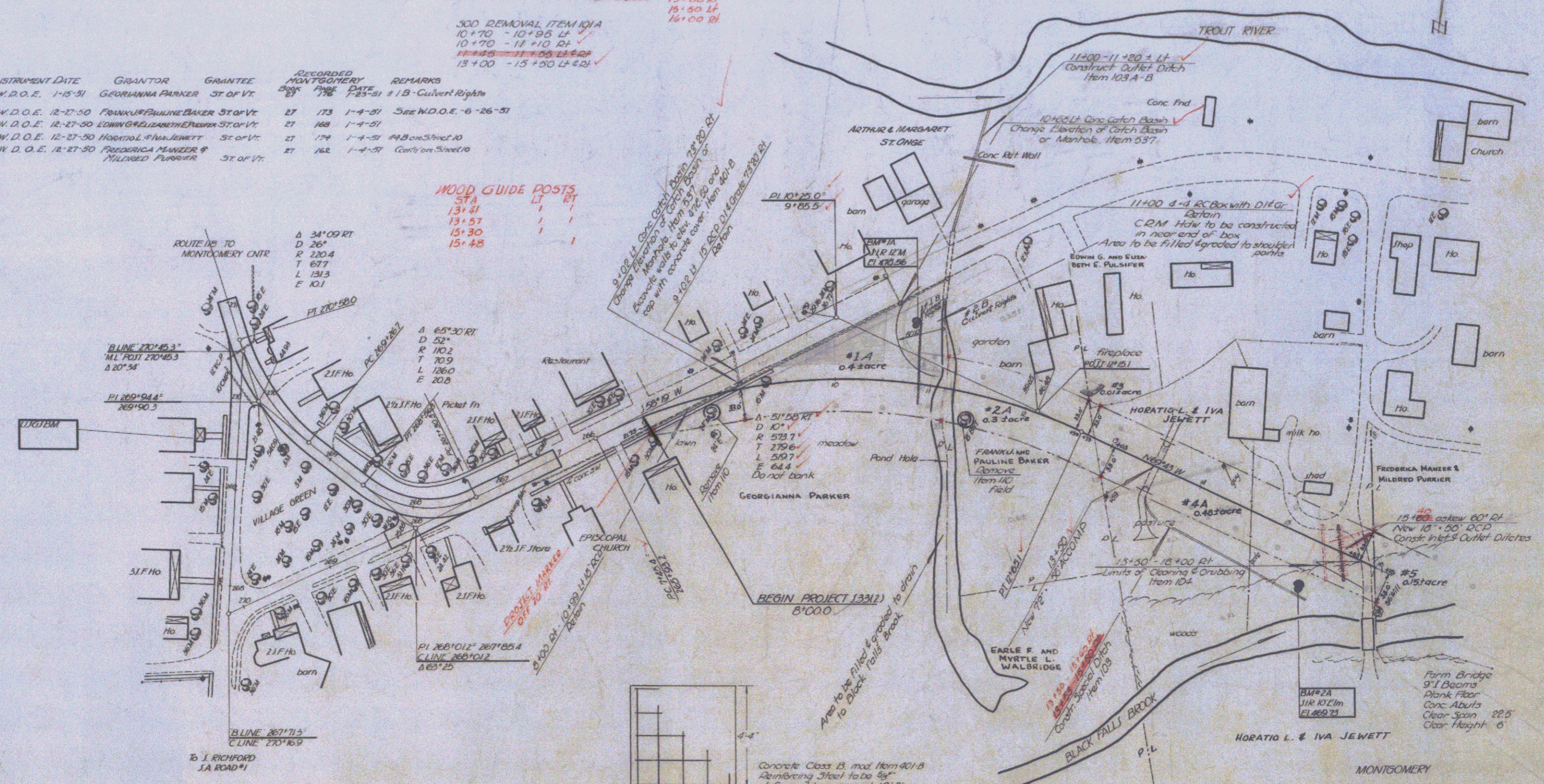
CONSTRUCT APPROACH
10+25 Lt ✓

CONSTRUCT DRIVE
15+75 Lt ✓
15+95 Lt ✓
11+35 Lt ✓
13+00 Lt ✓
15+50 Lt ✓
16+00 Lt ✓

300 REMOVAL ITEM 101A
10+70 - 10+95 Lt ✓
10+70 - 11+10 Rt ✓
11+45 - 11+55 Lt ✓
13+00 - 15+50 Lt ✓

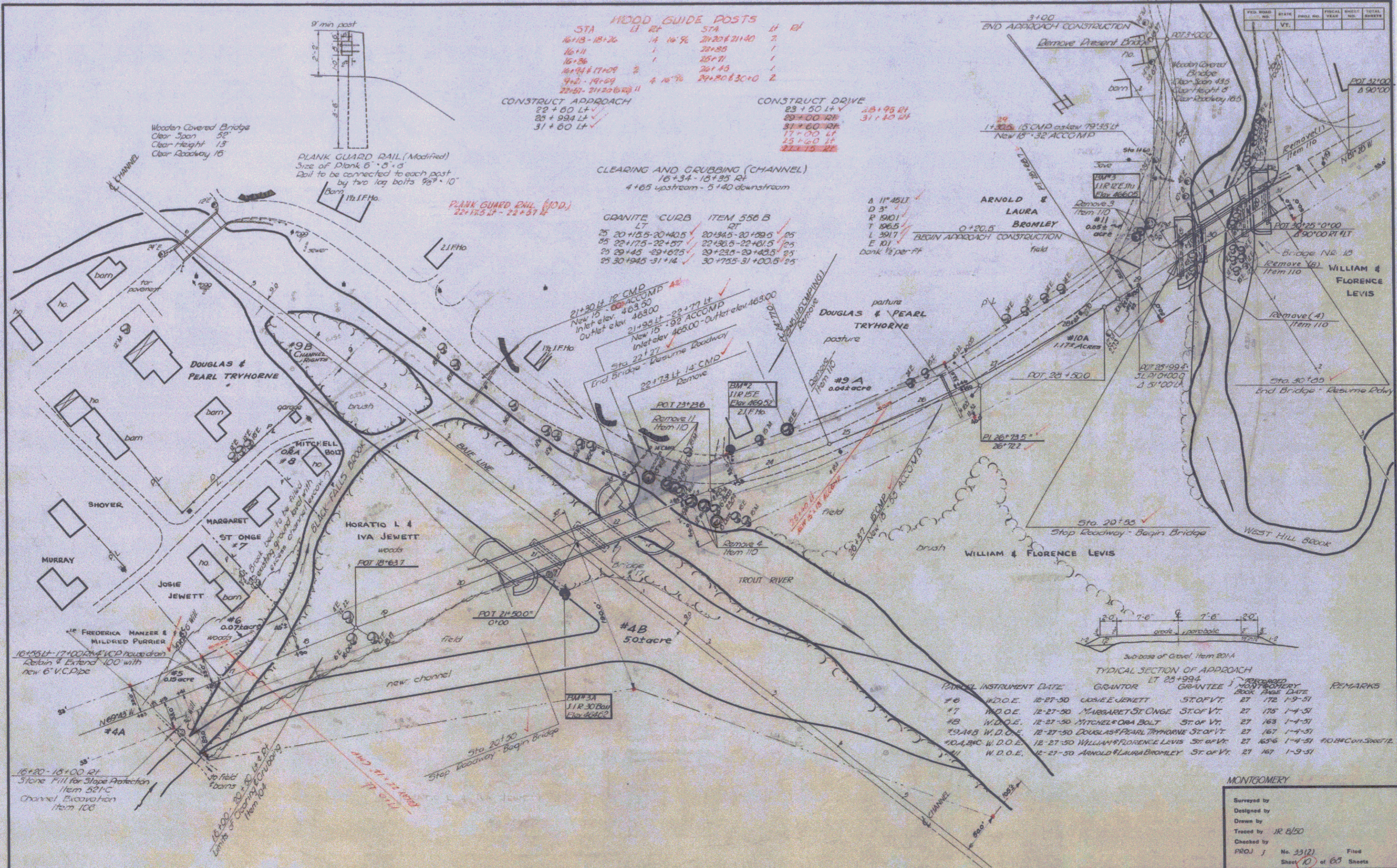
| PARCEL # | INSTRUMENT DATE | GRANTOR | GRANTEE | RECORDED BOOK # | DATE | REMARKS |
|----------|-------------------|------------------------------------|------------|-----------------|--------|----------------------|
| #1 | W.D.O.E. 1-15-51 | GEORGINNA PARKER | ST. OF VT. | 173 | 1-4-51 | 1 B - Culvert Rights |
| #2 | W.D.O.E. 12-27-50 | FRANK & PAULINE BAKER | ST. OF VT. | 180 | 1-4-51 | See W.D.O.E. 6-26-51 |
| #3 | W.D.O.E. 12-27-50 | EDWIN & ELIZABETH PARKER | ST. OF VT. | 174 | 1-4-51 | 44 B on Street 10 |
| #4 | W.D.O.E. 12-27-50 | HORATIO L. & IVA JEWETT | ST. OF VT. | 162 | 1-4-51 | Certs on Street 10 |
| #5 | W.D.O.E. 12-27-50 | FREDERICK MANIER & MILDRED PURRIER | ST. OF VT. | | | |

WOOD GUIDE POSTS
Sta RT LT
13+41 1 1
13+57 1 1
15+30 1 1
15+48 1 1



DETAILS OF CONCRETE COVER FOR CATCH BASIN 3749+02.14

Surveyed by
Designed by
Drawn by
Traced by Jr. 8/50
Checked by
Proj. 3 No. 33(2) Filed
Sheet 8 of 68 Sheets



WOOD GUIDE POSTS

| STA | LT | RT | STA | LT | RT |
|-------|-------|----|-----|-------|-------|
| 16+13 | 18+26 | 14 | 16% | 21+20 | 21+40 |
| 16+11 | | 1 | | 21+25 | 1 |
| 16+26 | | 1 | | 21+71 | 1 |
| 16+44 | 17+09 | 2 | 4 | 21+45 | 1 |
| 17+01 | 19+59 | 2 | 4 | 21+80 | 13 |
| 22+51 | 21+25 | 11 | | 21+30 | 2 |

CONSTRUCT APPROACH
 22+50 LT ✓
 23+59 LT ✓
 31+60 LT ✓

CONSTRUCT DRIVE
 23+50 LT ✓
 28+00 RT ✓
 31+60 RT ✓
 17+00 LT ✓
 25+60 LT ✓
 27+15 RT ✓

CLEARING AND GRUBBING (CHANNEL)
 16+34 - 18+35 RT
 4+65 upstream - 5+40 downstream

GRANITE CURB ITEM 556 B

| LT | RT |
|--------------------|-----------------|
| 25 20+15.5-20+40.5 | 20+44.5-20+99.5 |
| 25 22+17.5-22+57 | 22+38.5-22+40.5 |
| 25 23+45 -23+87.5 | 23+23.5-23+48.5 |
| 25 30+44.5-31+14 | 30+75.5-31+00.5 |

A 11' 45" LI
 D 3' ✓
 R 190' ✓
 T 106.5 ✓
 L 391.7 ✓
 E 101 ✓
 Bank 1/2 per ft

END APPROACH CONSTRUCTION
 Remove Present Bridge

1+32.5 (5' CMD) extend 72' 35" LT
 New 15' 32" ACCOMP

21+30 LT 14' CMD
 Remove

22+17.5 LT 14' CMD
 Remove

21+30 LT 12' CMD
 ACCOMP
 New 15' 32" ACCOMP
 Inlet elev 463.00
 Outlet elev 468.00

21+30 LT 12' CMD
 ACCOMP
 New 15' 32" ACCOMP
 Inlet elev 465.00
 Outlet elev 468.00

22+17.5 LT 14' CMD
 Remove

21+30 LT 12' CMD
 ACCOMP
 New 15' 32" ACCOMP
 Inlet elev 463.00
 Outlet elev 468.00

21+30 LT 12' CMD
 ACCOMP
 New 15' 32" ACCOMP
 Inlet elev 465.00
 Outlet elev 468.00

22+17.5 LT 14' CMD
 Remove

21+30 LT 12' CMD
 ACCOMP
 New 15' 32" ACCOMP
 Inlet elev 463.00
 Outlet elev 468.00

21+30 LT 12' CMD
 ACCOMP
 New 15' 32" ACCOMP
 Inlet elev 465.00
 Outlet elev 468.00

22+17.5 LT 14' CMD
 Remove

21+30 LT 12' CMD
 ACCOMP
 New 15' 32" ACCOMP
 Inlet elev 463.00
 Outlet elev 468.00

21+30 LT 12' CMD
 ACCOMP
 New 15' 32" ACCOMP
 Inlet elev 465.00
 Outlet elev 468.00

22+17.5 LT 14' CMD
 Remove

21+30 LT 12' CMD
 ACCOMP
 New 15' 32" ACCOMP
 Inlet elev 463.00
 Outlet elev 468.00

21+30 LT 12' CMD
 ACCOMP
 New 15' 32" ACCOMP
 Inlet elev 465.00
 Outlet elev 468.00

22+17.5 LT 14' CMD
 Remove

21+30 LT 12' CMD
 ACCOMP
 New 15' 32" ACCOMP
 Inlet elev 463.00
 Outlet elev 468.00

21+30 LT 12' CMD
 ACCOMP
 New 15' 32" ACCOMP
 Inlet elev 465.00
 Outlet elev 468.00

22+17.5 LT 14' CMD
 Remove

21+30 LT 12' CMD
 ACCOMP
 New 15' 32" ACCOMP
 Inlet elev 463.00
 Outlet elev 468.00

21+30 LT 12' CMD
 ACCOMP
 New 15' 32" ACCOMP
 Inlet elev 465.00
 Outlet elev 468.00

22+17.5 LT 14' CMD
 Remove

21+30 LT 12' CMD
 ACCOMP
 New 15' 32" ACCOMP
 Inlet elev 463.00
 Outlet elev 468.00

21+30 LT 12' CMD
 ACCOMP
 New 15' 32" ACCOMP
 Inlet elev 465.00
 Outlet elev 468.00

22+17.5 LT 14' CMD
 Remove

21+30 LT 12' CMD
 ACCOMP
 New 15' 32" ACCOMP
 Inlet elev 463.00
 Outlet elev 468.00

21+30 LT 12' CMD
 ACCOMP
 New 15' 32" ACCOMP
 Inlet elev 465.00
 Outlet elev 468.00

22+17.5 LT 14' CMD
 Remove

21+30 LT 12' CMD
 ACCOMP
 New 15' 32" ACCOMP
 Inlet elev 463.00
 Outlet elev 468.00

21+30 LT 12' CMD
 ACCOMP
 New 15' 32" ACCOMP
 Inlet elev 465.00
 Outlet elev 468.00

22+17.5 LT 14' CMD
 Remove

21+30 LT 12' CMD
 ACCOMP
 New 15' 32" ACCOMP
 Inlet elev 463.00
 Outlet elev 468.00

21+30 LT 12' CMD
 ACCOMP
 New 15' 32" ACCOMP
 Inlet elev 465.00
 Outlet elev 468.00

22+17.5 LT 14' CMD
 Remove

21+30 LT 12' CMD
 ACCOMP
 New 15' 32" ACCOMP
 Inlet elev 463.00
 Outlet elev 468.00

21+30 LT 12' CMD
 ACCOMP
 New 15' 32" ACCOMP
 Inlet elev 465.00
 Outlet elev 468.00

22+17.5 LT 14' CMD
 Remove

| FED. ROAD NO. | DIST. | SHEET NO. | TOTAL SHEETS |
|---------------|-------|-----------|--------------|
| 1 | Vt. | | |

| NO. | DESCRIPTION | AMOUNT |
|-----|-----------------------|--------|
| 1 | Remove Present Bridge | |
| 2 | Remove (1) | |
| 3 | Remove (2) | |
| 4 | Remove (3) | |
| 5 | Remove (4) | |

| NO. | DESCRIPTION | AMOUNT |
|-----|-------------|--------|
| 1 | Remove (1) | |
| 2 | Remove (2) | |
| 3 | Remove (3) | |
| 4 | Remove (4) | |
| 5 | Remove (5) | |

| NO. | DESCRIPTION | AMOUNT |
|-----|-------------|--------|
| 1 | Remove (1) | |
| 2 | Remove (2) | |
| 3 | Remove (3) | |
| 4 | Remove (4) | |
| 5 | Remove (5) | |

| NO. | DESCRIPTION | AMOUNT |
|-----|-------------|--------|
| 1 | Remove (1) | |
| 2 | Remove (2) | |
| 3 | Remove (3) | |
| 4 | Remove (4) | |
| 5 | Remove (5) | |

| NO. | DESCRIPTION | AMOUNT |
|-----|-------------|--------|
| 1 | Remove (1) | |
| 2 | Remove (2) | |
| 3 | Remove (3) | |
| 4 | Remove (4) | |
| 5 | Remove (5) | |

| NO. | DESCRIPTION | AMOUNT |
|-----|-------------|--------|
| 1 | Remove (1) | |
| 2 | Remove (2) | |
| 3 | Remove (3) | |
| 4 | Remove (4) | |
| 5 | Remove (5) | |

| NO. | DESCRIPTION | AMOUNT |
|-----|-------------|--------|
| 1 | Remove (1) | |
| 2 | Remove (2) | |
| 3 | Remove (3) | |
| 4 | Remove (4) | |
| 5 | Remove (5) | |

| NO. | DESCRIPTION | AMOUNT |
|-----|-------------|--------|
| 1 | Remove (1) | |
| 2 | Remove (2) | |
| 3 | Remove (3) | |
| 4 | Remove (4) | |
| 5 | Remove (5) | |

| NO. | DESCRIPTION | AMOUNT |
|-----|-------------|--------|
| 1 | Remove (1) | |
| 2 | Remove (2) | |
| 3 | Remove (3) | |
| 4 | Remove (4) | |
| 5 | Remove (5) | |

| NO. | DESCRIPTION | AMOUNT |
|-----|-------------|--------|
| 1 | Remove (1) | |
| 2 | Remove (2) | |
| 3 | Remove (3) | |
| 4 | Remove (4) | |
| 5 | Remove (5) | |

| NO. | DESCRIPTION | AMOUNT |
|-----|-------------|--------|
| 1 | Remove (1) | |
| 2 | Remove (2) | |
| 3 | Remove (3) | |
| 4 | Remove (4) | |
| 5 | Remove (5) | |

| NO. | DESCRIPTION | AMOUNT |
|-----|-------------|--------|
| 1 | Remove (1) | |
| 2 | Remove (2) | |
| 3 | Remove (3) | |
| 4 | Remove (4) | |
| 5 | Remove (5) | |

| NO. | DESCRIPTION | AMOUNT |
|-----|-------------|--------|
| 1 | Remove (1) | |
| 2 | Remove (2) | |
| 3 | Remove (3) | |
| 4 | Remove (4) | |
| 5 | Remove (5) | |

| NO. | DESCRIPTION | AMOUNT |
|-----|-------------|--------|
| 1 | Remove (1) | |
| 2 | Remove (2) | |
| 3 | Remove (3) | |
| 4 | Remove (4) | |
| 5 | Remove (5) | |

| NO. | DESCRIPTION | AMOUNT |
|-----|-------------|--------|
| 1 | Remove (1) | |
| 2 | Remove (2) | |
| 3 | Remove (3) | |
| 4 | Remove (4) | |
| 5 | Remove (5) | |

| NO. | DESCRIPTION | AMOUNT |
|-----|-------------|--------|
| 1 | Remove (1) | |
| 2 | Remove (2) | |
| 3 | Remove (3) | |
| 4 | Remove (4) | |
| 5 | Remove (5) | |

| NO. | DESCRIPTION | AMOUNT |
|-----|-------------|--------|
| 1 | Remove (1) | |
| 2 | Remove (2) | |
| 3 | Remove (3) | |
| 4 | Remove (4) | |
| 5 | Remove (5) | |

| NO. | DESCRIPTION | AMOUNT |
|-----|-------------|--------|
| 1 | Remove (1) | |
| 2 | Remove (2) | |
| 3 | Remove (3) | |
| 4 | Remove (4) | |
| 5 | Remove (5) | |

| NO. | DESCRIPTION | AMOUNT |
|-----|-------------|--------|
| 1 | Remove (1) | |
| 2 | Remove (2) | |
| 3 | Remove (3) | |
| 4 | Remove (4) | |
| 5 | Remove (5) | |

| NO. | DESCRIPTION | AMOUNT |
|-----|-------------|--------|
| 1 | Remove (1) | |
| 2 | Remove (2) | |
| 3 | Remove (3) | |
| 4 | Remove (4) | |
| 5 | Remove (5) | |

| NO. | DESCRIPTION | AMOUNT |
|-----|-------------|--------|
| 1 | Remove (1) | |
| 2 | Remove (2) | |
| 3 | Remove (3) | |
| 4 | Remove (4) | |
| 5 | Remove (5) | |

| NO. | DESCRIPTION | AMOUNT |
|-----|-------------|--------|
| 1 | Remove (1) | |
| 2 | Remove (2) | |
| 3 | Remove (3) | |
| 4 | Remove (4) | |
| 5 | Remove (5) | |

| NO. | DESCRIPTION | AMOUNT |
|-----|-------------|--------|
| 1 | Remove (1) | |
| 2 | Remove (2) | |
| 3 | Remove (3) | |
| 4 | Remove (4) | |
| 5 | Remove (5) | |

| NO. | DESCRIPTION | AMOUNT |
|-----|-------------|--------|
| 1 | Remove (1) | |
| 2 | Remove (2) | |
| 3 | Remove (3) | |
| 4 | Remove (4) | |
| 5 | Remove (5) | |

| NO. | DESCRIPTION | AMOUNT |
|-----|-------------|--------|
| 1 | Remove (1) | |
| 2 | Remove (2) | |
| 3 | Remove (3) | |
| 4 | Remove (4) | |
| 5 | Remove (5) | |

| NO. | DESCRIPTION | AMOUNT |
|-----|-------------|--------|
| 1 | Remove (1) | |
| 2 | Remove (2) | |
| 3 | Remove (3) | |
| 4 | Remove (4) | |
| 5 | Remove (5) | |

| NO. | DESCRIPTION | AMOUNT |
|-----|-------------|--------|
| 1 | Remove (1) | |
| 2 | Remove (2) | |
| 3 | Remove (3) | |
| 4 | Remove (4) | |
| 5 | Remove (5) | |

| NO. | DESCRIPTION | AMOUNT |
|-----|-------------|--------|
| 1 | Remove (1) | |
| 2 | Remove (2) | |
| 3 | Remove (3) | |
| 4 | Remove (4) | |
| 5 | Remove (5) | |

| NO. | DESCRIPTION | AMOUNT |
|-----|-------------|--------|
| 1 | Remove (1) | |
| 2 | Remove (2) | |
| 3 | Remove (3) | |
| 4 | Remove (4) | |
| 5 | Remove (5) | |

| NO. | DESCRIPTION | AMOUNT |
|-----|-------------|--------|
| 1 | Remove (1) | |
| 2 | Remove (2) | |
| 3 | Remove (3) | |
| 4 | Remove (4) | |
| 5 | Remove (5) | |

| NO. | DESCRIPTION | AMOUNT |
|-----|-------------|--------|
| 1 | Remove (1) | |
| 2 | Remove (2) | |
| 3 | Remove (3) | |
| 4 | Remove (4) | |
| 5 | Remove (5) | |

| NO. | DESCRIPTION | AMOUNT |
|-----|-------------|--------|
| 1 | Remove (1) | |
| 2 | Remove (2) | |
| 3 | Remove (3) | |
| 4 | Remove (4) | |
| 5 | Remove (5) | |

| NO. | DESCRIPTION | AMOUNT |
|-----|-------------|--------|
| 1 | Remove (1) | |
| 2 | Remove (2) | |
| 3 | Remove (3) | |
| 4 | Remove (4) | |
| 5 | Remove (5) | |

| NO. | DESCRIPTION | AMOUNT |
|-----|-------------|--------|
| 1 | Remove (1) | |
| 2 | Remove (2) | |
| 3 | Remove (3) | |
| 4 | Remove (4) | |
| 5 | Remove (5) | |

| NO. | DESCRIPTION | AMOUNT |
|-----|-------------|--------|
|-----|-------------|--------|

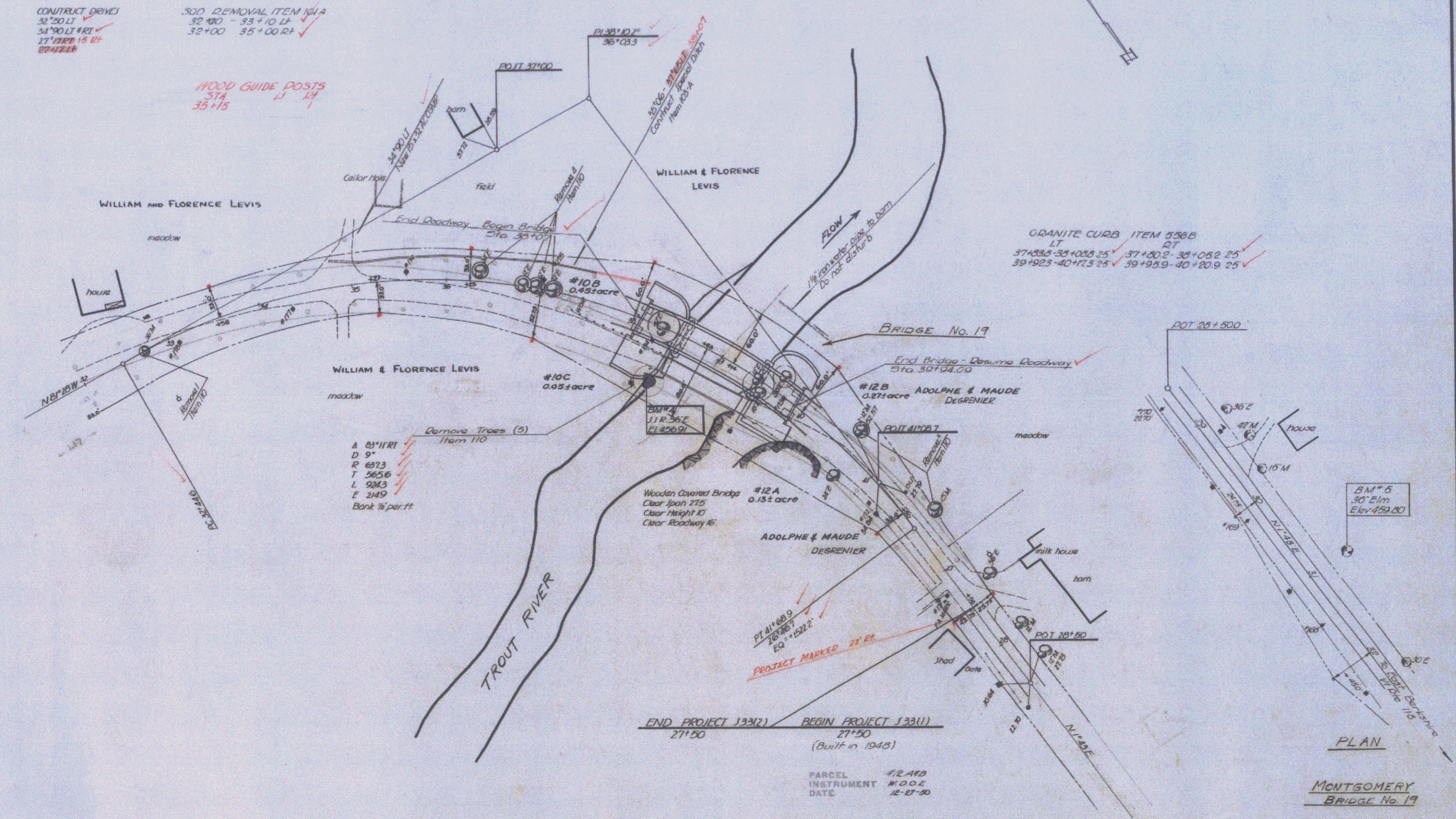
| FYD ROAD NO. | STATE | PROJ. NO. | FISCAL YEAR | SHEET NO. | TOTAL SHEETS |
|--------------|-------|-----------|-------------|-----------|--------------|
| | VT. | | | | |

CONSTRUCT DRIVE
 32+20 LT ✓
 34+90 LT #RT ✓
 27+70 RT 15 RT ✓
 27+42 RT ✓

SOD REMOVAL ITEM 101A
 32+00 - 33+10 LT ✓
 32+00 35+00 RT ✓

HOOD GUIDE POSTS
 37A ✓
 35+15 ✓

GRANITE CURB ITEM 558B
 LT ✓
 37+53.5 - 38+00.25 ✓
 39+02.5 - 40+17.5 25 ✓
 37+00.2 - 38+05.2 25 ✓
 39+05.9 - 40+20.9 25 ✓



- A 85+11 RT ✓
 - D 97 ✓
 - R 2313 ✓
 - T 2656 ✓
 - L 2343 ✓
 - E 2149 ✓
- Bank 1/2 par. ft

END PROJECT 13312
 27+50

BEGIN PROJECT 13311
 27+50
 (Built in 1943)

PARCEL #2-143
 INSTRUMENT #1002
 DATE 12-27-50

GRANTOR ADOLPHE MAUDE
 DESRENIER

GRANTEE ST. OF VT.

RECORDED MONTGOMERY
 BOOK 27
 PAGE 49
 DATE 1-4-51

REMARKS

Scale 1"=50'

Surveyed by Spaulding
 Designed by
 Drawn by
 Traced by
 Checked by
 PROJ S No. 53-2 Filed
 Sheet 12 of 68 Sheets