

INDEX OF SHEETS

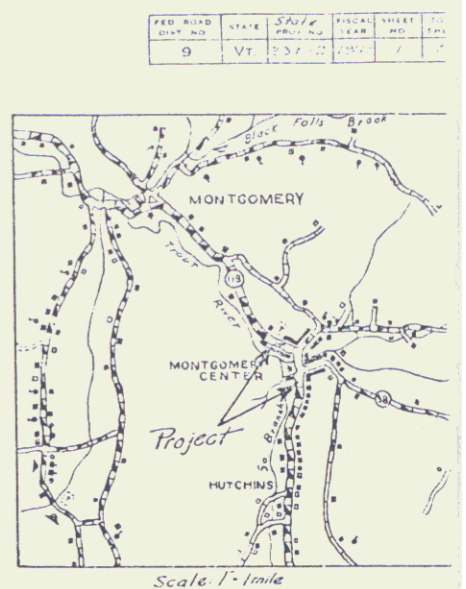
SHEET NO.	TITLE PAGE
1	TITLE PAGE
2	TYPICAL CROSS-SECTION OF IMPROVEMENT
3	BANKING AND WIDENING TABLES
4	PLAN AND PROFILE
5	Standard Structure Sheet S-28
6	S-30
7	Cross Sections
8	Drainage Outlets

STATE OF VERMONT
STATE HIGHWAY DEPARTMENT

PLAN AND PROFILE OF PROPOSED
STATE HIGHWAY

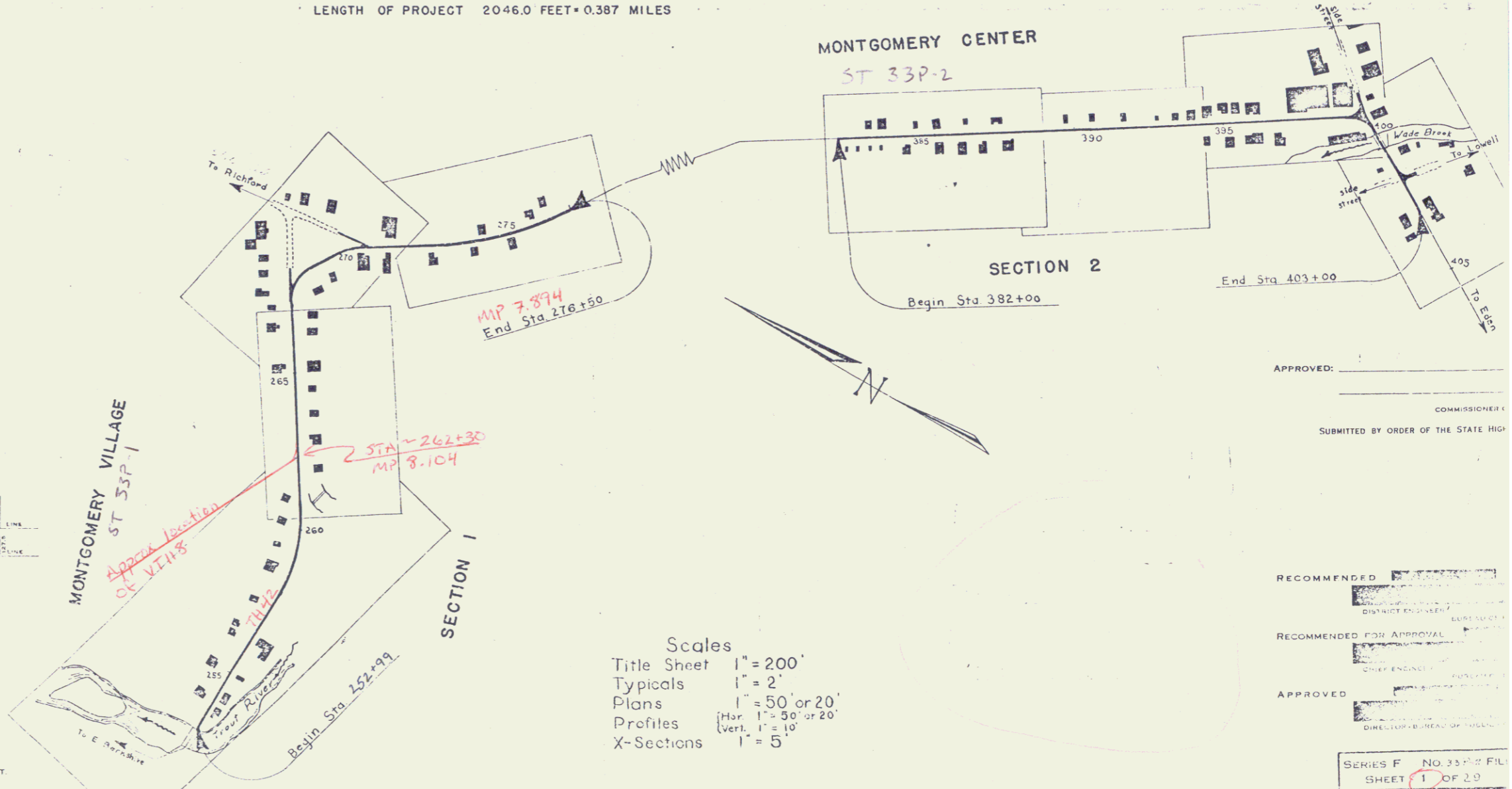
TOWN OF MONTGOMERY — VT ROUTE 118
A PORTION OF MAIN STREET IN THE VILLAGE OF MONTGOMERY CENTER
BEGINNING ABOUT 500 FEET EAST OF CEMETERY AND ENDING
200 FEET SOUTH OF THE BRIDGE OVER WADE BROOK.

Pin# 00RS14
Project ST 33P-1
Date 1/1/1940



[To Be Returned to H. O. R. Division]
1/118
126
MONTGOMERY
MONTGOMERY
MONTGOMERY

LENGTH OF PROJECT 2046.0 FEET • 0.387 MILES



CONVENTIONAL SIGNS

COUNTY LINE	GROUND ELEVATION
TOWN LINE	GRADE ELEVATION
FENCE LINE	
STONE WALL	
UNFENCED PROPERTY	
GUARD RAIL	
TRAVELED WAY	
RAILROAD	
RETAINING WALL	
CENTER LINE	
SURVEY LINE	
CULVERT	
DROP INLET	
TROLLEY POLE	
POWER POLE	
TRAIL PHONE POLE	

CURVE DATA	
DEFLECTION ANGLE	Δ
DEGREE OF CURVE	D
RADIUS OF CURVE	R
TANGENT DISTANCE	T
LENGTH OF CURVE	L
EXTERNAL DISTANCE	E
POINT OF INTERSECTION	P. I.
POINT OF CURVE	P. C.
POINT OF TANGENT	P. T.
POINT ON TANGENT	P. O. T.

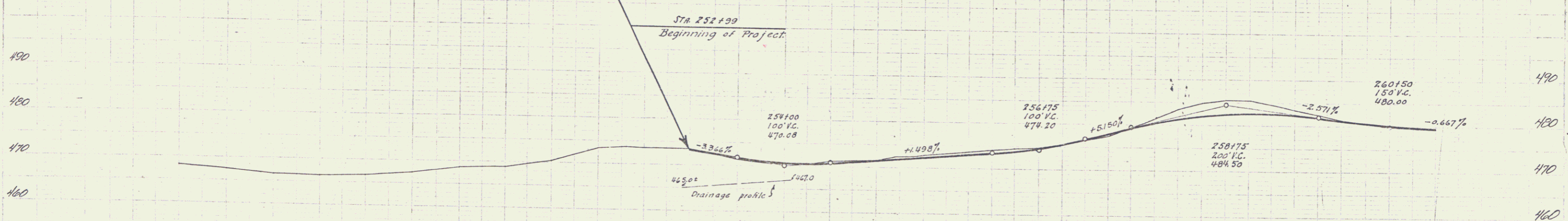
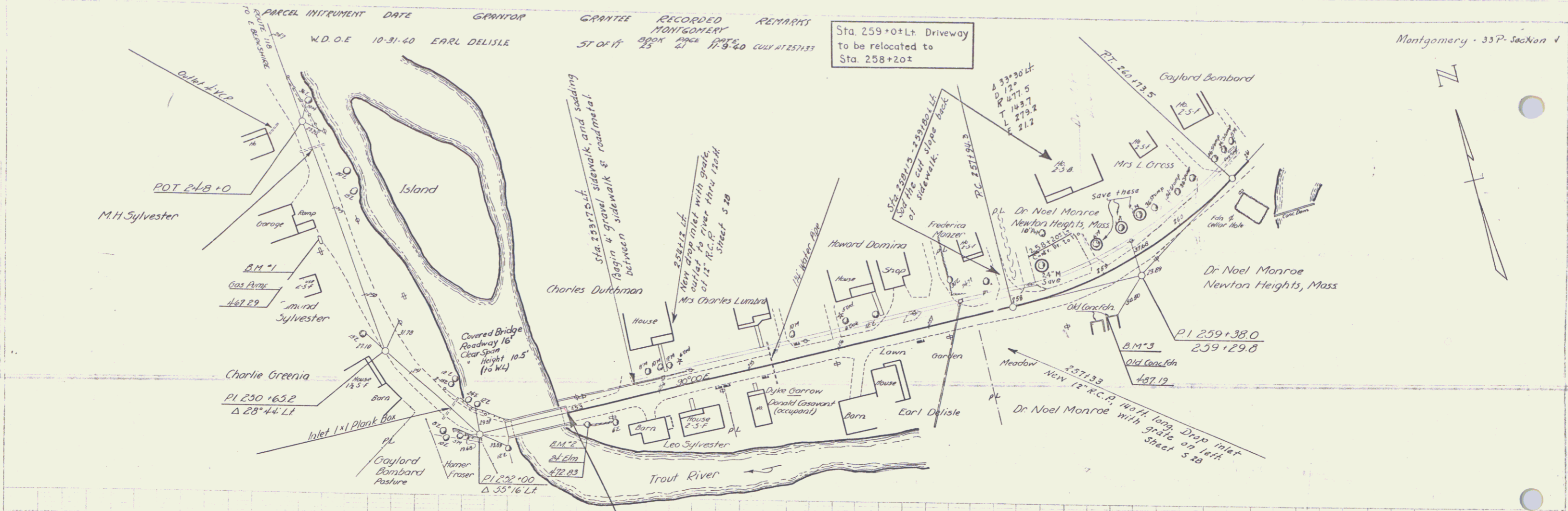
Scales
Title Sheet 1" = 200'
Typicals 1" = 2'
Plans 1" = 50' or 20'
Profiles Hor. 1" = 50' or 20'
Vert. 1" = 10'
X-Sections 1" = 5'

APPROVED: _____
COMMISSIONER
SUBMITTED BY ORDER OF THE STATE HIGHWAY DEPARTMENT

RECOMMENDED FOR APPROVAL
RECOMMENDED FOR APPROVAL
APPROVED

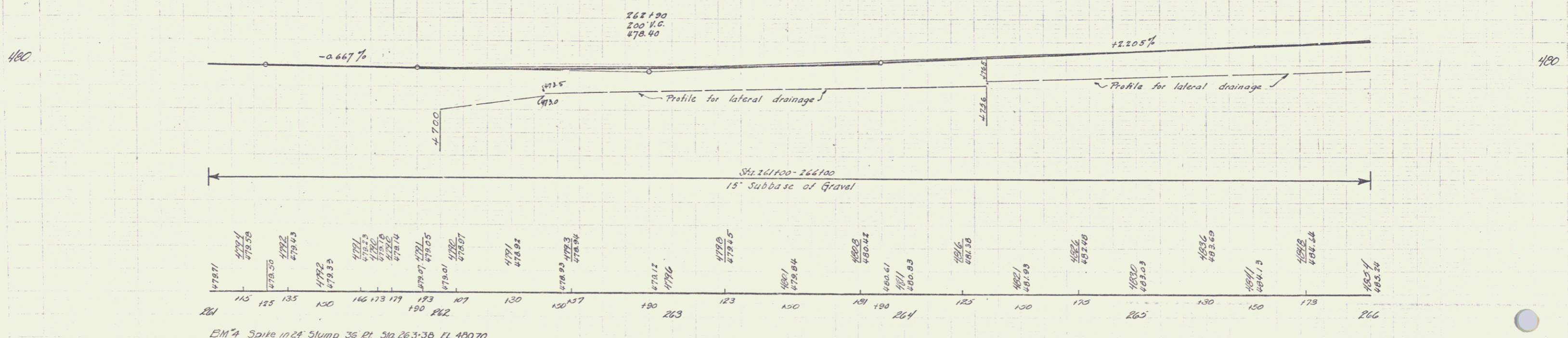
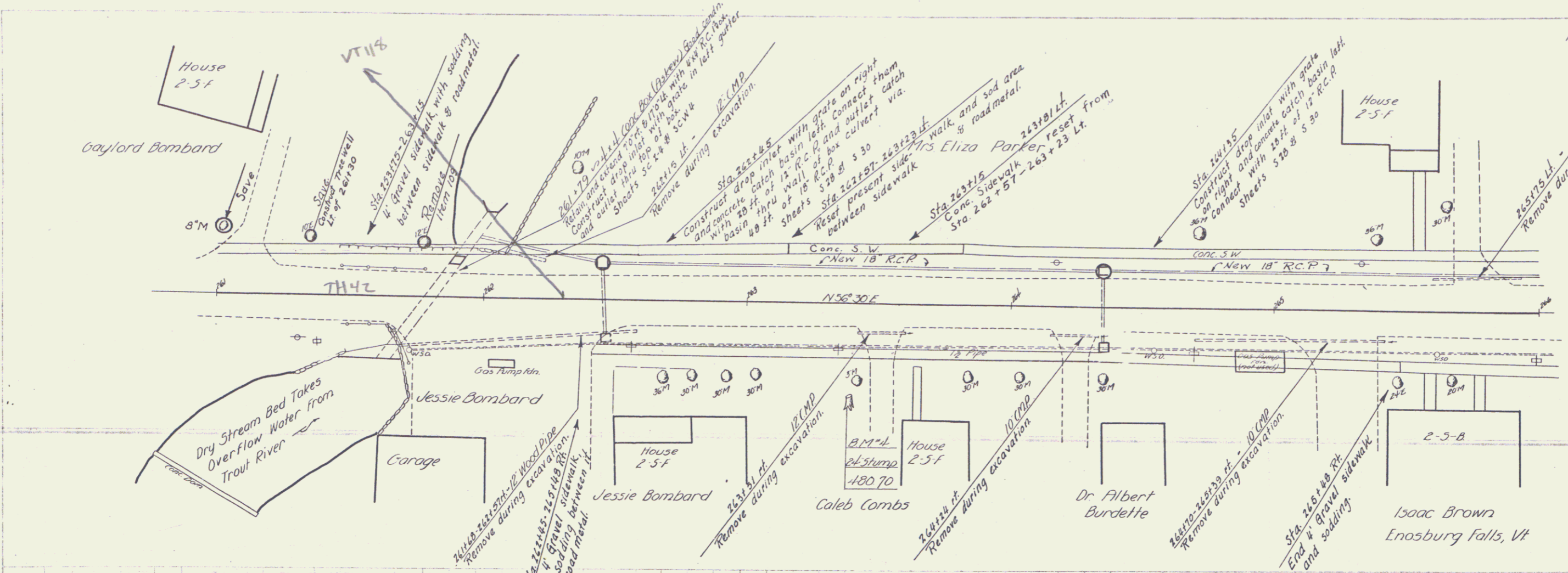
SERIES F NO. 35 FILE
SHEET 1 OF 20

DIST. # 8

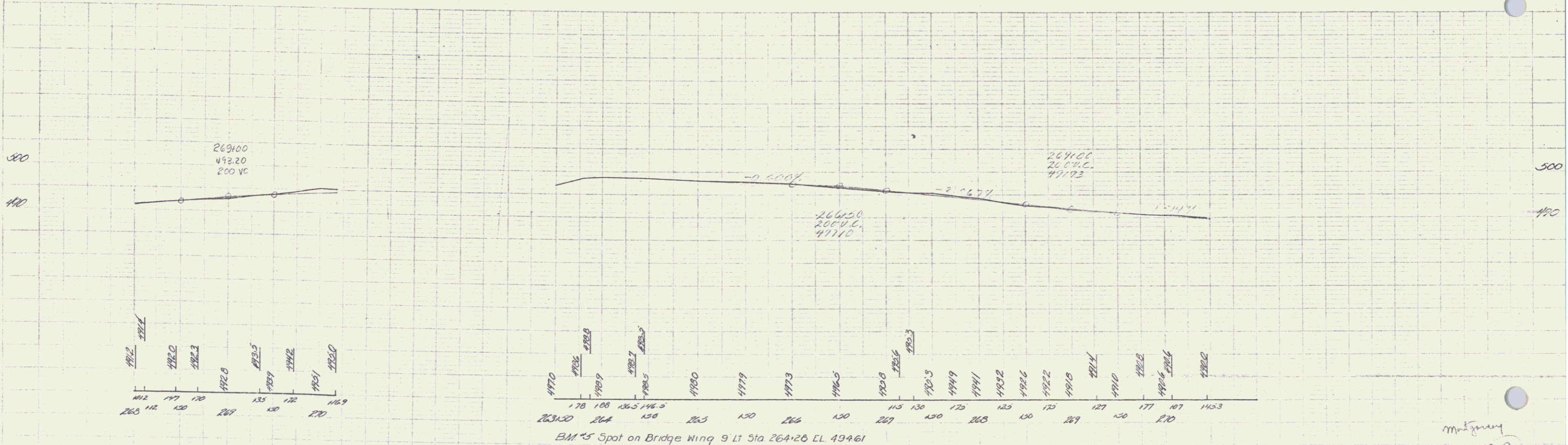
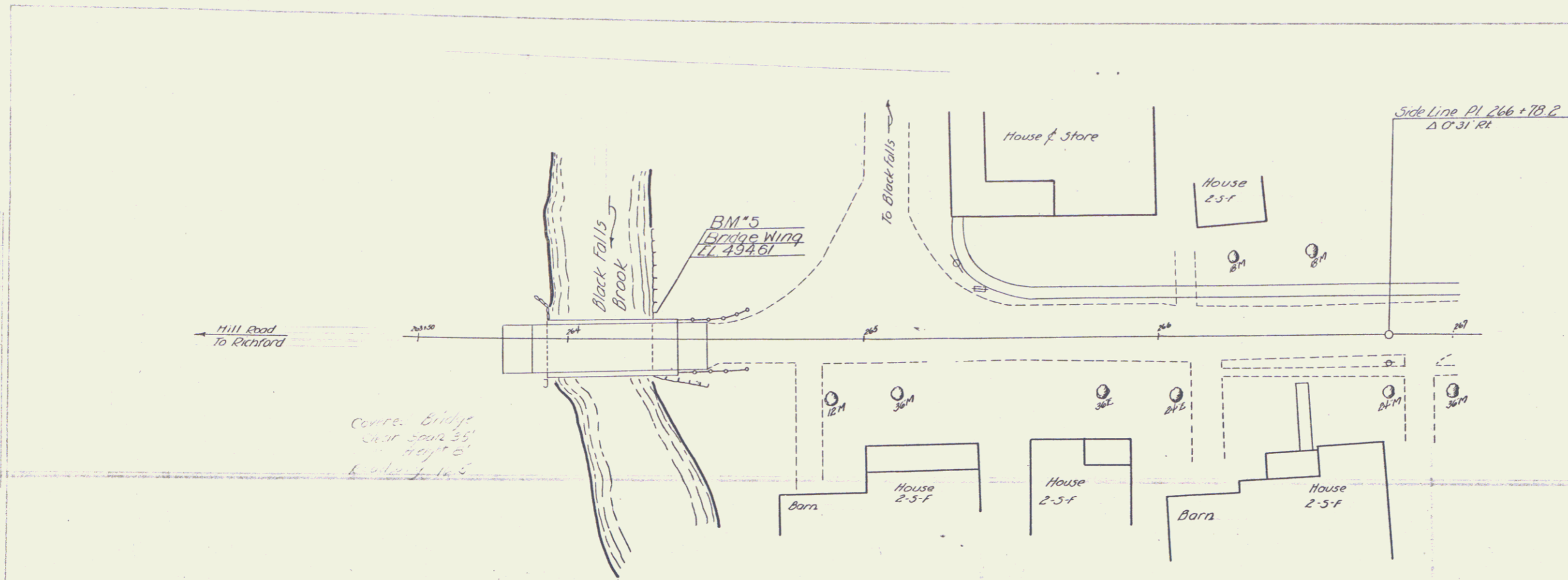


Station	Elevation
247	465.1
248	467.4
249	466.5
250	466.4
251	467.3
252	468.8
253	469.0
254	470.3
255	473.1
256	473.7
257	472.6
258	471.5
259	471.6
260	471.6
261	471.6
262	471.6
263	471.6
264	471.6
265	471.6
266	471.6
267	471.6
268	471.6
269	471.6
270	471.6
271	471.6
272	471.6
273	471.6
274	471.6
275	471.6
276	471.6
277	471.6
278	471.6
279	471.6
280	471.6
281	471.6
282	471.6
283	471.6
284	471.6
285	471.6
286	471.6
287	471.6
288	471.6
289	471.6
290	471.6
291	471.6
292	471.6
293	471.6
294	471.6
295	471.6
296	471.6
297	471.6
298	471.6
299	471.6
300	471.6

BM 1 Gas pump foundation 24.5 L1 510 249.30 EL 467.29
 BM 2 51R 24" Elm 15.5 R1 510 253.14 EL 472.83
 BM 3 Old Conc foundation 44 L1 510 258.83 EL 487.19



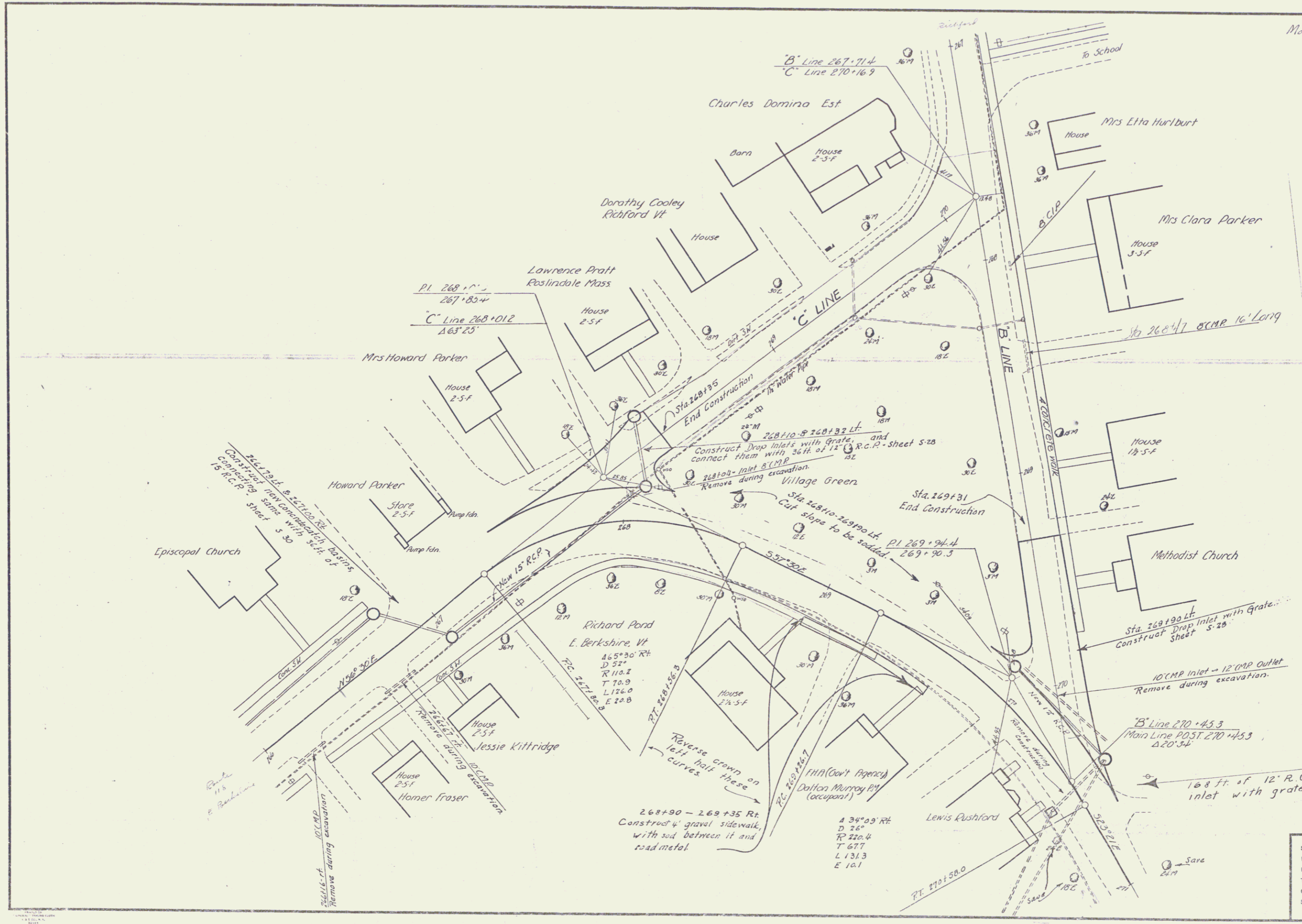
EM #4 Spike in 24' Slump 35 Ft. Sta. 263+38 EL. 480.70



BM*5 Spot on Bridge Wing 9' Lt Sta 264+26 EL 494.61

Station	Elevation	Notes
263+00	497.10	BM
263+10	497.10	BM
263+20	497.10	BM
263+30	497.10	BM
263+40	497.10	BM
263+50	497.10	BM
263+60	497.10	BM
263+70	497.10	BM
263+80	497.10	BM
263+90	497.10	BM
264+00	497.10	BM
264+10	497.10	BM
264+20	497.10	BM
264+30	497.10	BM
264+40	497.10	BM
264+50	497.10	BM
264+60	497.10	BM
264+70	497.10	BM
264+80	497.10	BM
264+90	497.10	BM
265+00	498.20	BM
265+10	498.20	BM
265+20	498.20	BM
265+30	498.20	BM
265+40	498.20	BM
265+50	498.20	BM
265+60	498.20	BM
265+70	498.20	BM
265+80	498.20	BM
265+90	498.20	BM
266+00	498.20	BM
266+10	498.20	BM
266+20	498.20	BM
266+30	498.20	BM
266+40	498.20	BM
266+50	498.20	BM
266+60	498.20	BM
266+70	498.20	BM
266+80	498.20	BM
266+90	498.20	BM
267+00	498.20	BM

maty
33 P
SHEET 4
4



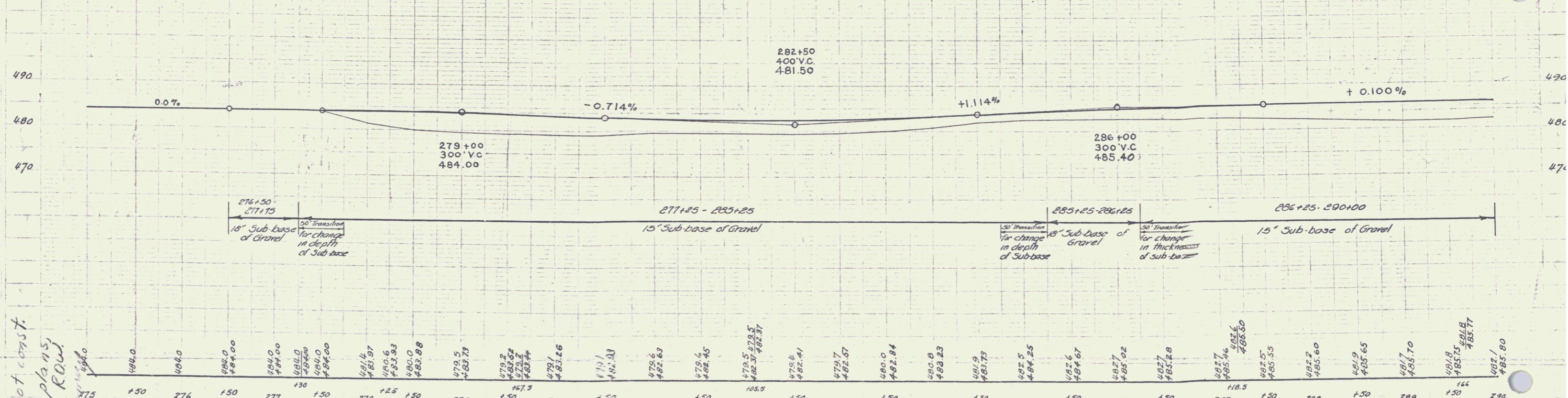
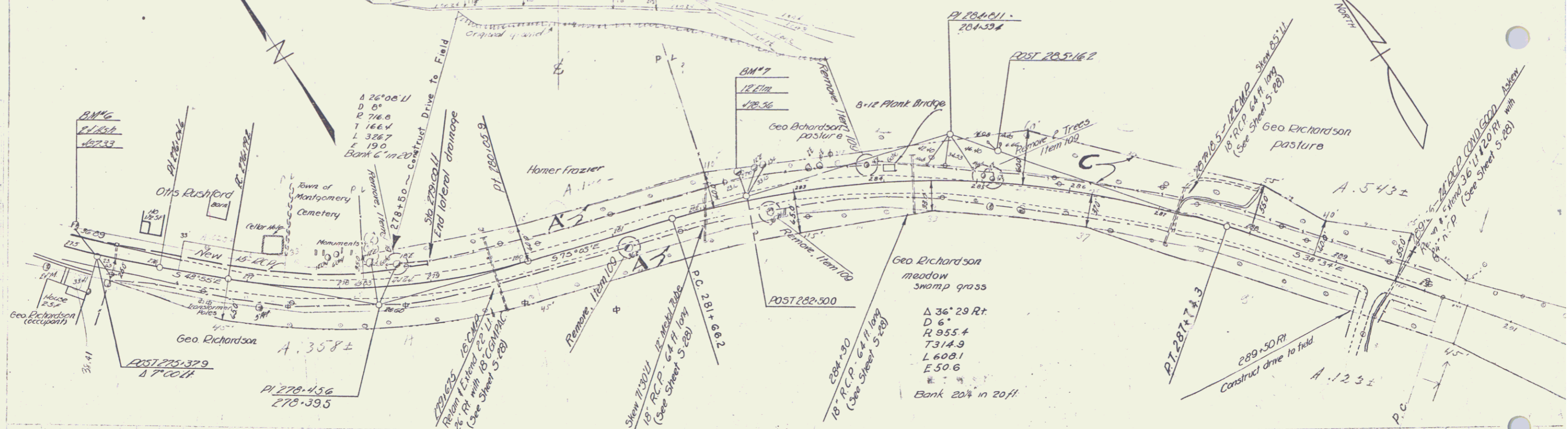
Surveyed by	
Designed by	
Drawn by	
Traced by	
Checked by	
Series	No. 33-P Sect. 1 Filed
	Sheet 5 of 5 Sheets

5

Index
 Sheets 1-5 Layouts & Profiles
 Sheets 6-23 Cross Sections

PARCEL INSTRUMENT	DATE	GRANTOR	GRANTEES	RECORDED	REMARK
A C	W D O E	10-26-40	GEORGE & LINDIE RICHARDSON	ST OF VT	25 38-38 11-9-40
A	Y D O E	12-11-40	HOMER A FRAZIER	ST OF VT	25 67 2-21-42

33 P-1 1940 1 2.3
 Ext



This proj. not const.
 from these plans
 but shows ROW
 for Montgomery
 S. 33(4)
 (1953)

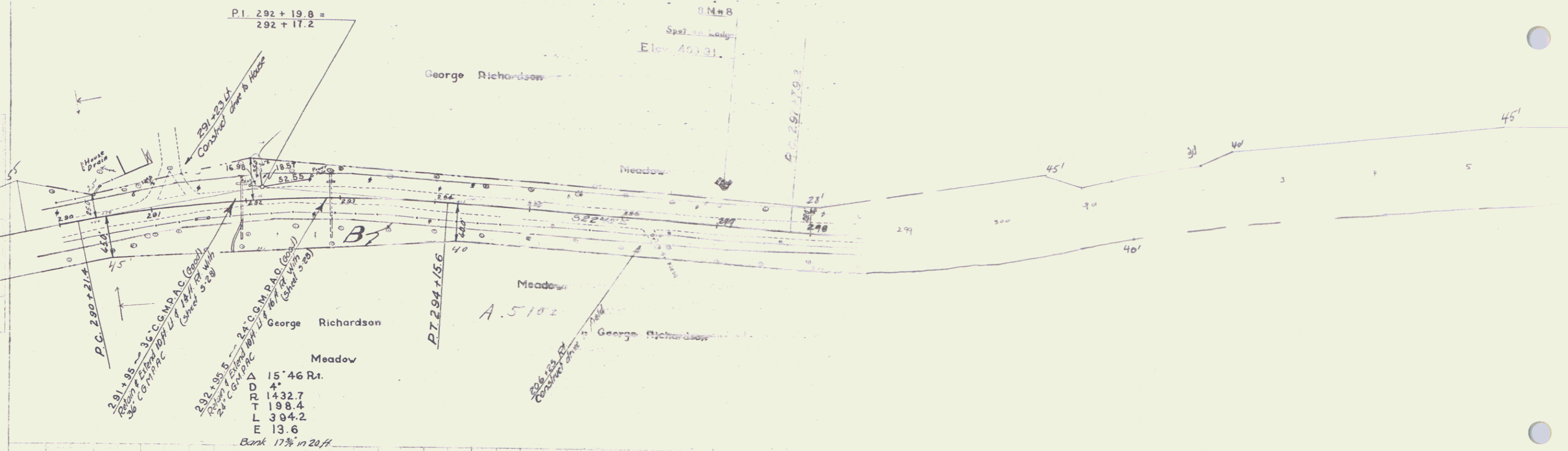
B.M. #6 24" Ash Lt. 20' @ Sta. 275+06.5 Elev. 487.33
 B.M. #7 Spike in root of 12' Elm Lt. 26.5 ft @ Sta. 282+46 Elev. 478.56

Montgomery 33-P-1 Ext
 Sheet 1 of 23 Sheets
 DIST # 8 PANS
 7

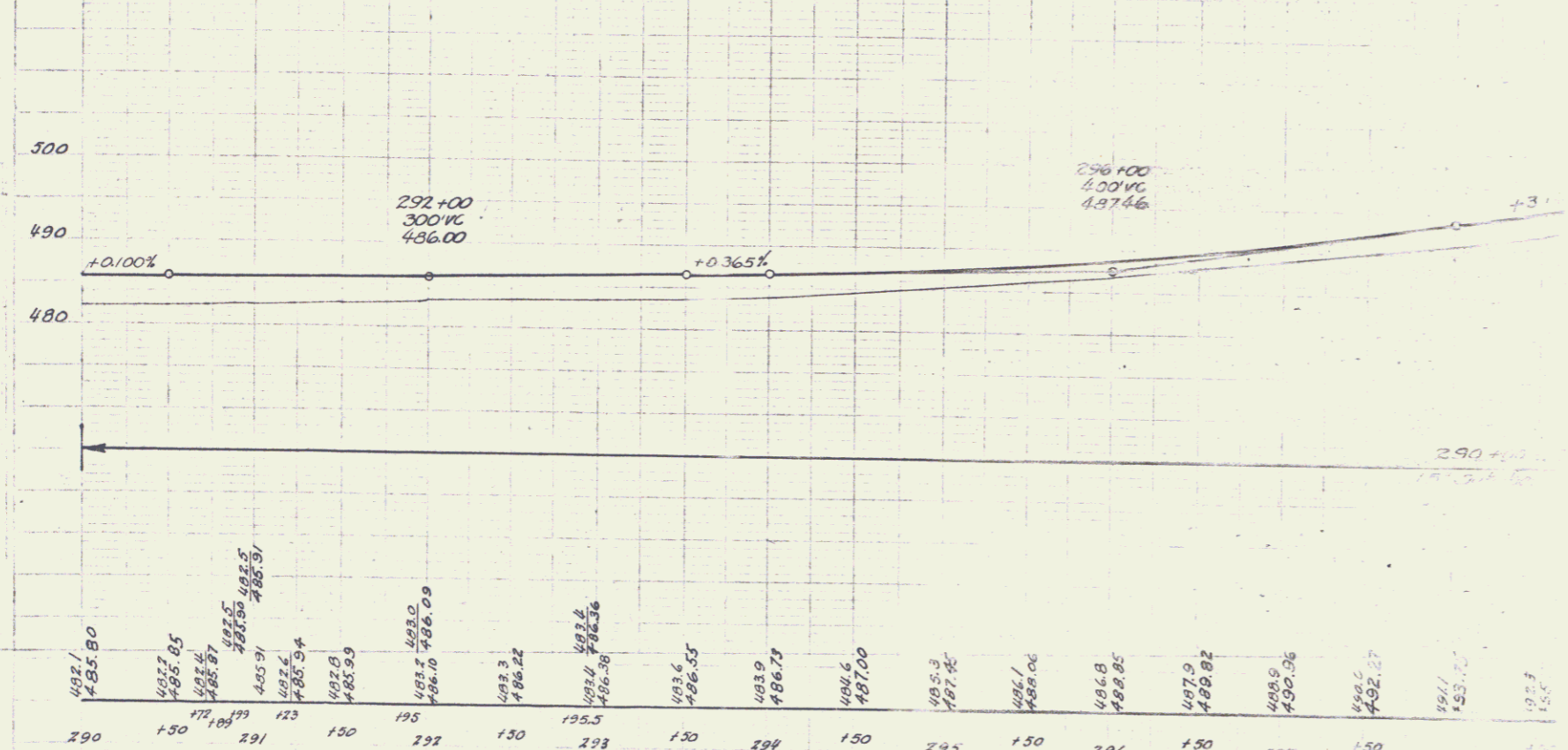
PARCEL INSTRUMENT DATE GRANTOR STATE RECORDED MONTGOMERY COUNTY

B	W.D.O.E.	10-26-40	GEORGE E. LINNIE RICHARDSON	ST. OF MD.	BOOK 25	PAGE 38-39	DATE 11-9-40
CD	E.D.	4-21-41	ST. ONGE ESTATE	ST. OF VA.	24	271-313	4-23-41

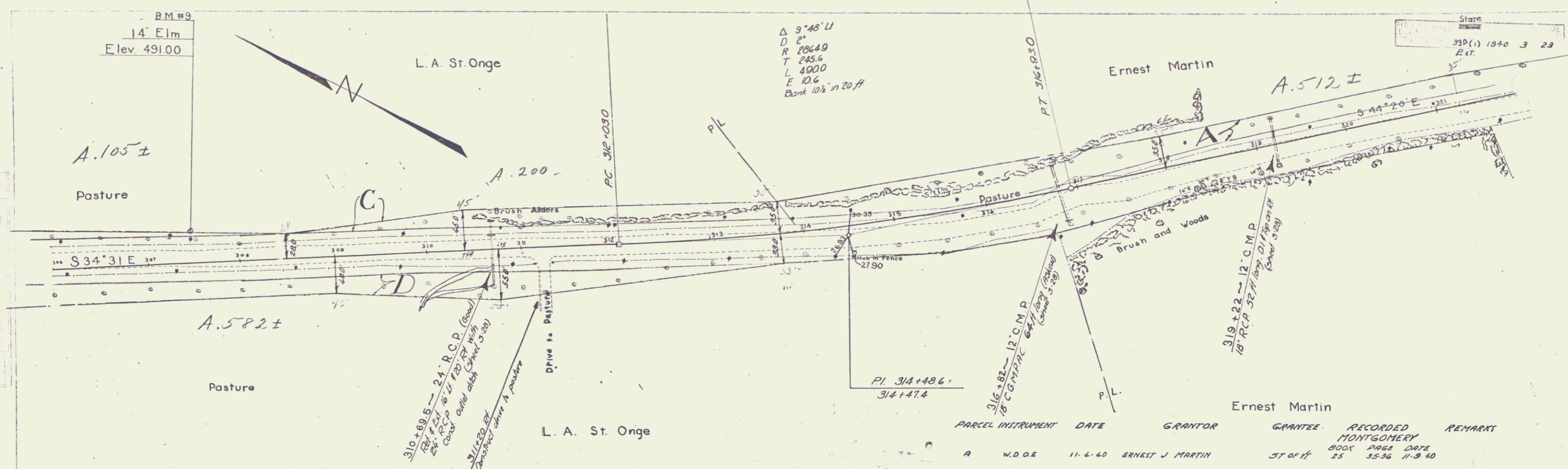
POOR ORIGINAL COPY



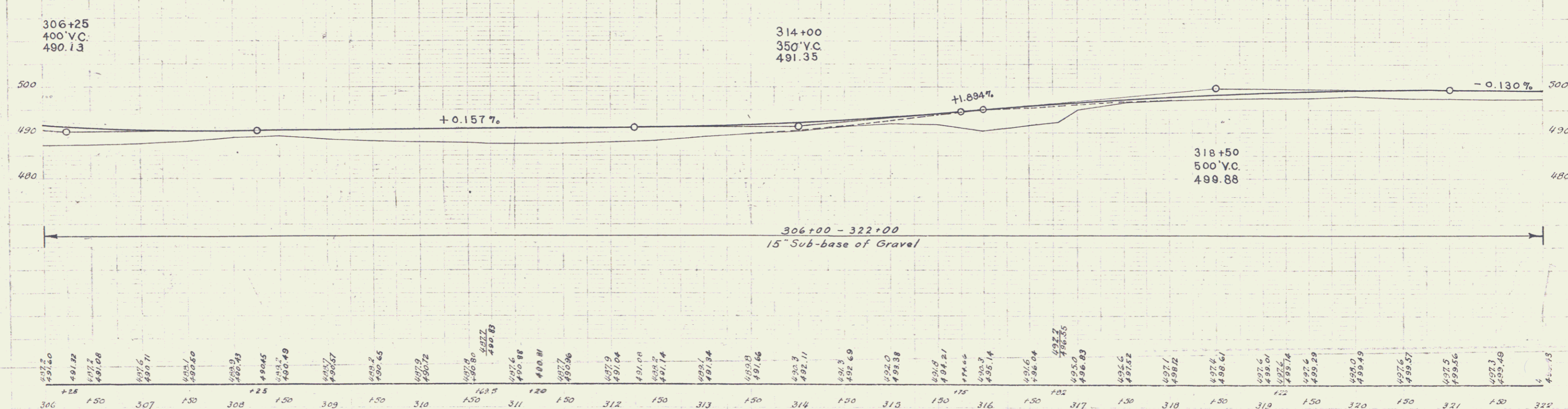
A 15'46 R1.
 D 4'
 T 1432.7
 L 198.4
 L 394.2
 E 13.6
 Bank 17% in 20 ft.



B.M.#8 Spot on Ledge Lt. 40 ft. at Sta. 297+03 Elev. 493.31



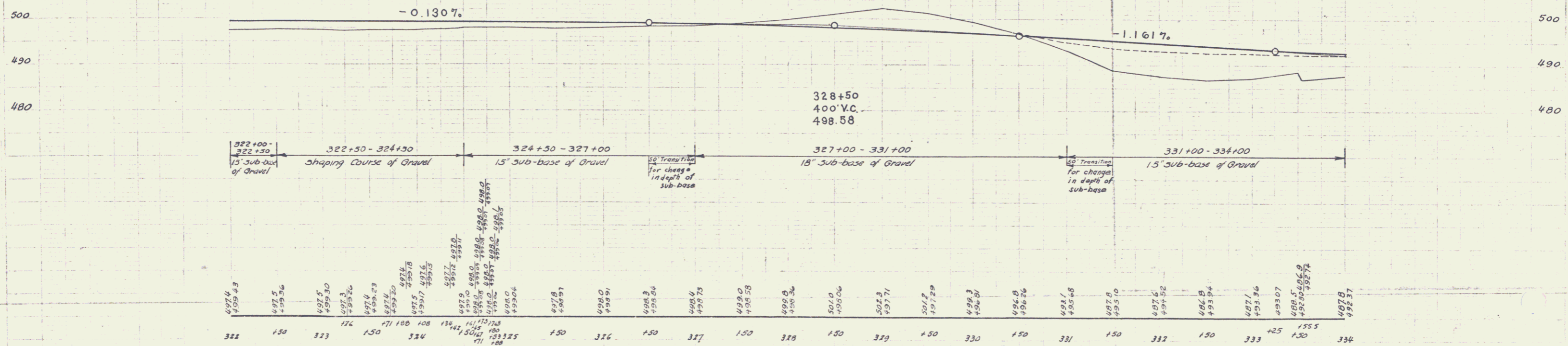
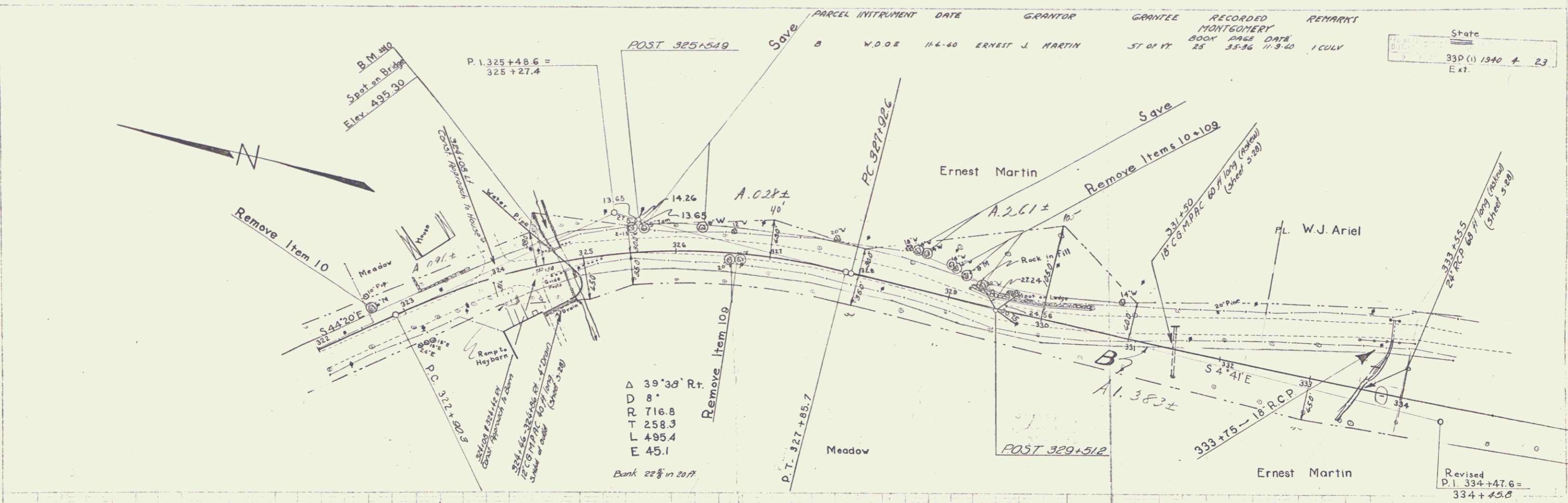
PARCEL	INSTRUMENT	DATE	GRANTOR	GRANTEE	RECORDED MONTGOMERY	REMARKS
A	W.D.O.E	11-6-40	ERNEST J. MARTIN	ST OF H	BOOK PAGE DATE 25 33-36 11-9-40	



B.M. #9 14' Elm. Lt. 33.5ft. at Sta. 307+47 Elev. 491.00

Montgomery 33-P-1
Sheet 3 of 23 Sheets.

State
 Montgomery
 33P (1) 1940 # 23
 Ext.



B.M. #10 Spot on bridge Lt. 13.5ft at Sta. 324+72 Elev. 495.30

Montgomery 33-P-1 Ext. Sheet 4 of 23 Sheets

PARCEL INSTRUMENT	DATE	GRANTOR	GRANTEE	RECORDED	REMARKS
A	W.D.E.	2-6-41	WILLIAM E. ROSANNA ARIEL	ST. OF VT.	25 31 2-21-41

Δ 6'32'30" Lt
 D 0'30"
 R 11854.3
 T 655.0
 L 13082
 E 18.6

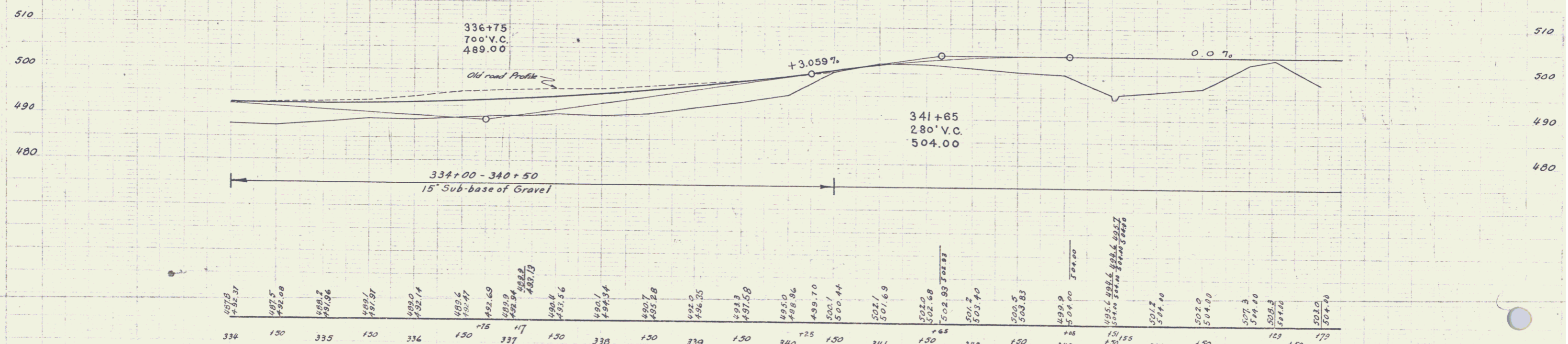
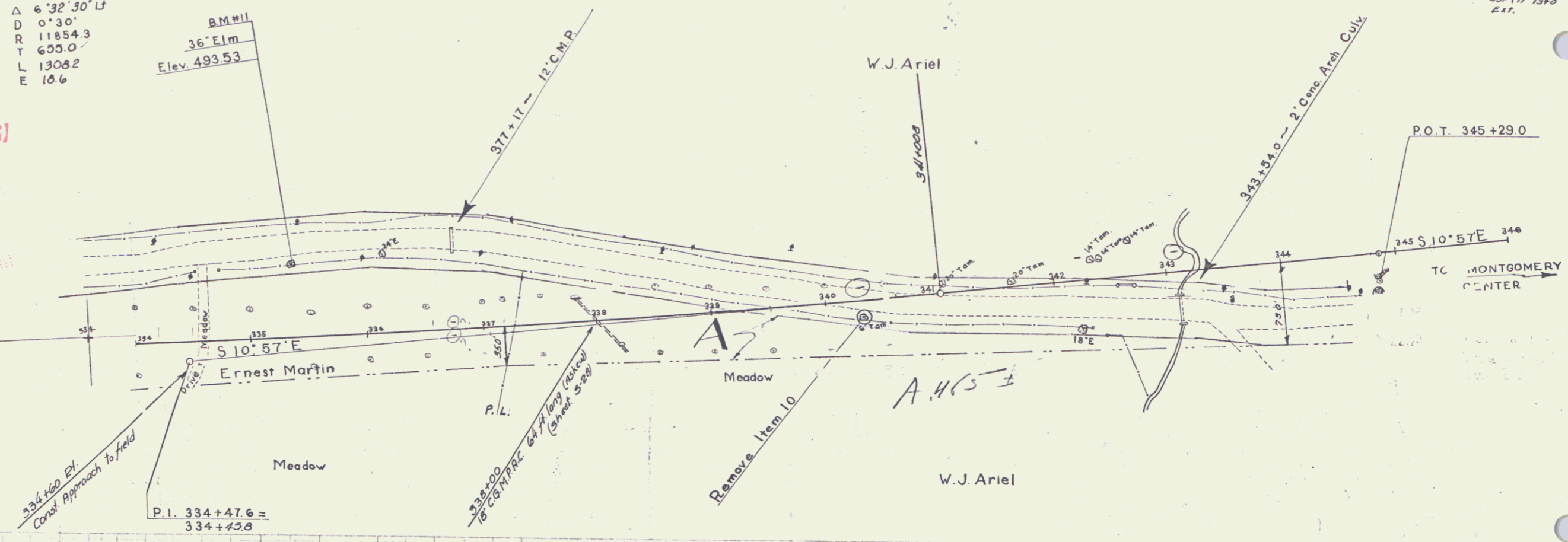
B.M.#11
 36" Elm
 Elev. 493.53

(To Be Returned to R.O.W. Division)
 Town of VT
 PERPETUAL
 TOWN FILE
 HIGHWAY DIVISION

State
 33P(1) 1340 S 23
 DAT.

3/24/46
 B. J. Johnson

3/24/46
 B. J. Johnson



497.5	497.5	498.2	498.7	499.0	499.2	499.4	499.6	499.8	499.9	500.0	500.1	500.2	500.3	500.4	500.5	500.6	500.7	500.8	500.9	501.0	501.1	501.2	501.3	501.4	501.5	501.6	501.7	501.8	501.9	502.0	502.1	502.2	502.3	502.4	502.5	502.6	502.7	502.8	502.9	503.0	503.1	503.2	503.3	503.4	503.5	503.6	503.7	503.8	503.9	504.0	504.1	504.2	504.3	504.4	504.5	504.6	504.7	504.8	504.9	505.0	505.1	505.2	505.3	505.4	505.5	505.6	505.7	505.8	505.9	506.0	506.1	506.2	506.3	506.4	506.5	506.6	506.7	506.8	506.9	507.0	507.1	507.2	507.3	507.4	507.5	507.6	507.7	507.8	507.9	508.0	508.1	508.2	508.3	508.4	508.5	508.6	508.7	508.8	508.9	509.0	509.1	509.2	509.3	509.4	509.5	509.6	509.7	509.8	509.9	510.0																							
334	150	335	150	336	150	337	150	338	150	339	150	340	150	341	150	342	150	343	150	344	150	345	150	346	150	347	150	348	150	349	150	350	150	351	150	352	150	353	150	354	150	355	150	356	150	357	150	358	150	359	150	360	150	361	150	362	150	363	150	364	150	365	150	366	150	367	150	368	150	369	150	370	150	371	150	372	150	373	150	374	150	375	150	376	150	377	150	378	150	379	150	380	150	381	150	382	150	383	150	384	150	385	150	386	150	387	150	388	150	389	150	390	150	391	150	392	150	393	150	394	150	395	150	396	150	397	150	398	150	399	150	400	150

B.M.#11 Spike in root of 36" Elm Lt. 58ft. at Sta. 335+81 Elev. 493.53

Montgomery 33-P. 1. EXT
 Sheet 5 of 23 Sheets