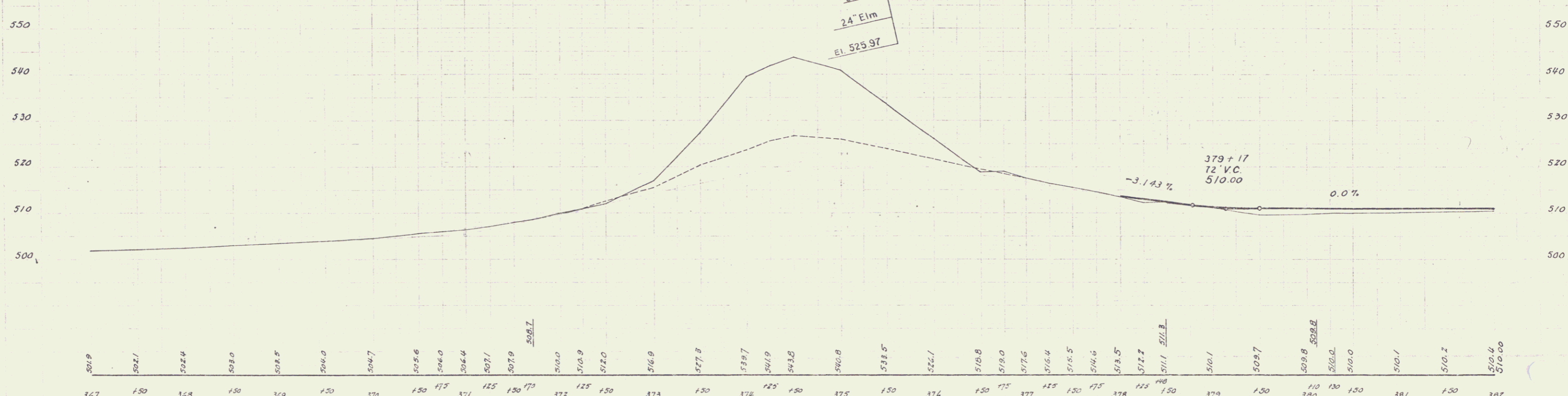


G.M. LOMB
1840
Kimball & Johnson
1840

G.M. LOMB
1840
Kimball & Johnson
1840



367 501.9
+50 502.7
368 502.4
+50 503.0
369 502.5
+50 504.0
370 504.7
+50 505.6
+75 506.0
371 504.4
+25 507.1
+50 507.9
+50 508.7
372 510.2
+25 510.9
+50 512.0
373 516.9
+50 517.5
374 519.7
+25 521.9
+50 523.5
375 520.8
+50 523.5
376 526.1
+50 529.8
+25 531.0
377 527.6
+25 526.4
+50 525.5
+25 524.6
378 523.5
+25 522.2
+50 511.1
379 510.1
+50 509.7
380 509.8
+25 510.0
+50 510.0
381 510.1
+50 510.2
382 510.4
510.00

B.M. #1 Spike in Root of 30' Maple 21' Rt. Sta. 370+21 Elev. 505.13
B.M. #2 Spike in Root of 24' Elm 36' Rt. R.O.S.T. Sta. 375+13 Elev. 525.97
B.M. #3 Spike in Trunk of 30' Elm 46' Rt. Sta. 378+97 Elev. 507.41

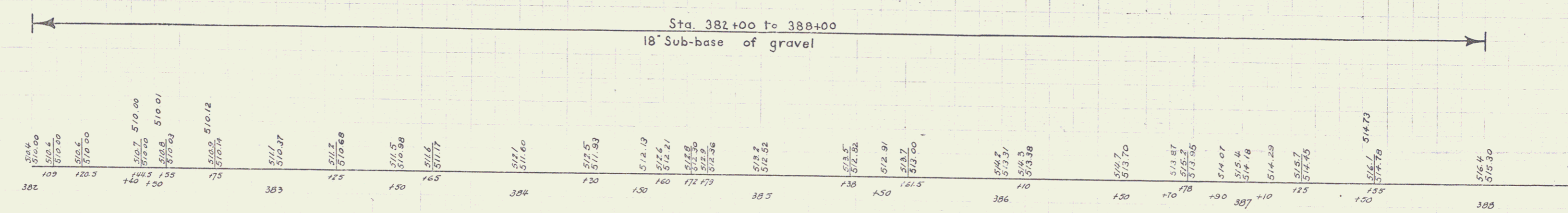
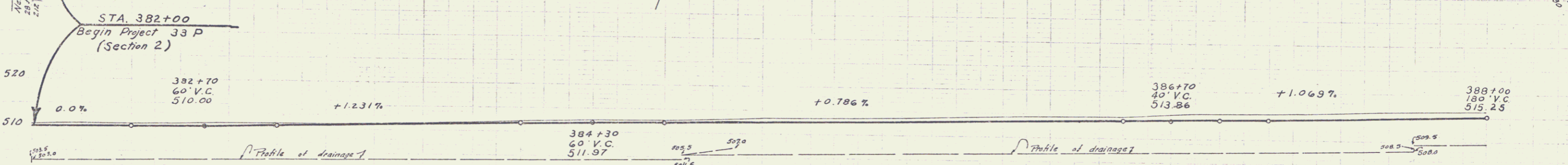
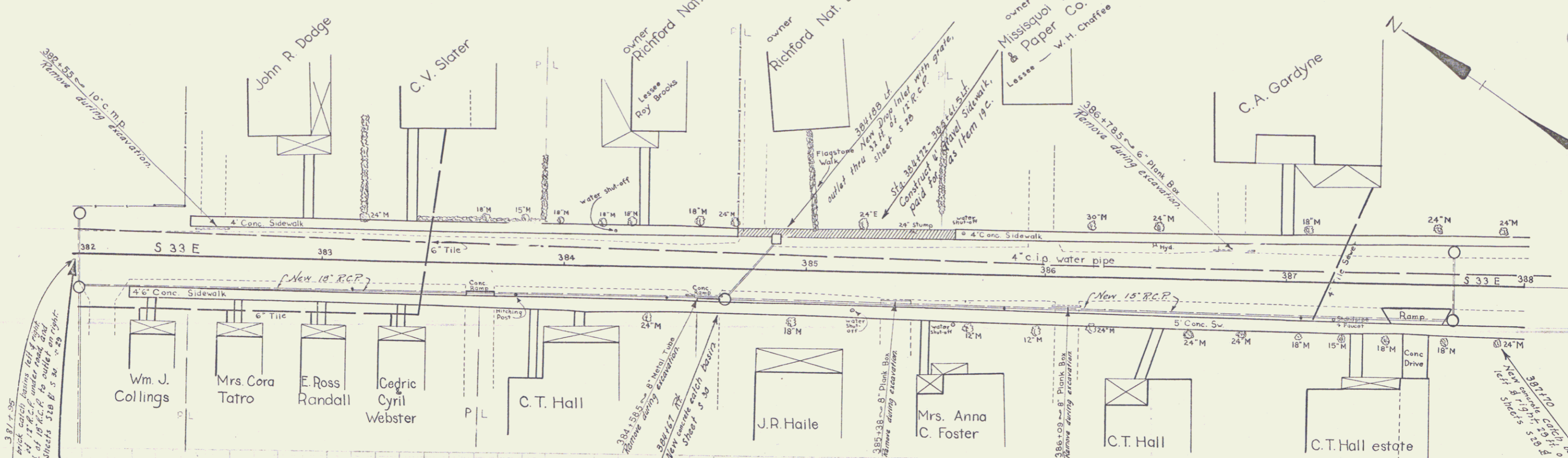
Sta. 370-382±
Side fill to be made from excavation
over the project and as shown on
the cross sections.

B.M. #3
30" Elm
Elev. 507.41

B.M. #2
24" Elm
Elev. 525.97

Montgomery Center
33 P. Section 2
Sheet 4 of 29

PARCEL INSTRUMENT DATE GRANTOR GRANTEE RECORDED REMARKS
 W.D.02 9-13-60 JOHN R DODGE ST OF IT MONTGOMERY
 25000 PAGE 9-21-60 CIV 172,381,195

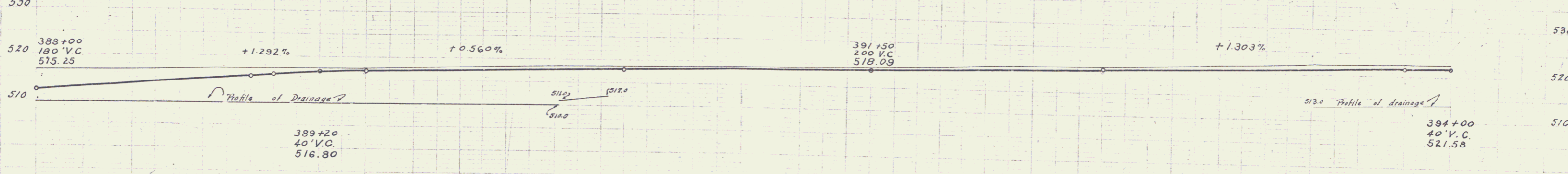
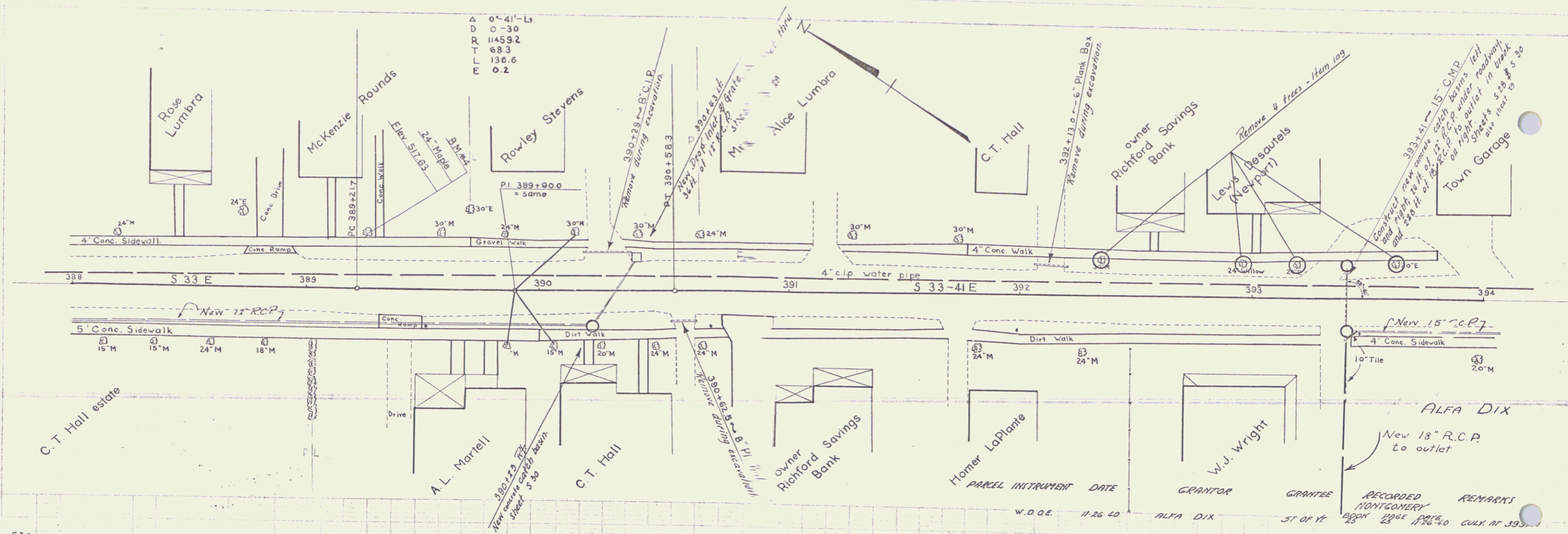


Station	Elevation
382	510.00
109	510.4
120.3	510.90
140	510.00
141.3	510.00
155	510.01
175	510.02
175	510.12
175	510.14
383	511.1
145	510.37
145	511.2
145	510.68
150	511.5
150	510.98
165	511.6
165	511.7
384	511.60
120	511.5
120	511.93
150	512.13
160	512.4
172	512.20
172	512.36
385	512.2
138	512.5
138	512.32
150	512.91
150	513.7
150	513.00
386	514.7
110	513.31
110	514.3
110	513.38
130	514.7
130	513.70
170	513.87
170	513.96
387	514.07
100	514.4
100	514.18
110	514.29
125	515.7
125	514.45
150	516.1
150	514.73
388	516.4
388	515.30

Montgomery Center
 33 P. Section 2
 Sheet 5 of 29

C.M. LANE
KIMBALL JOHNSON
1840
1840

C.M. LANE
KIMBALL JOHNSON
1840
1840



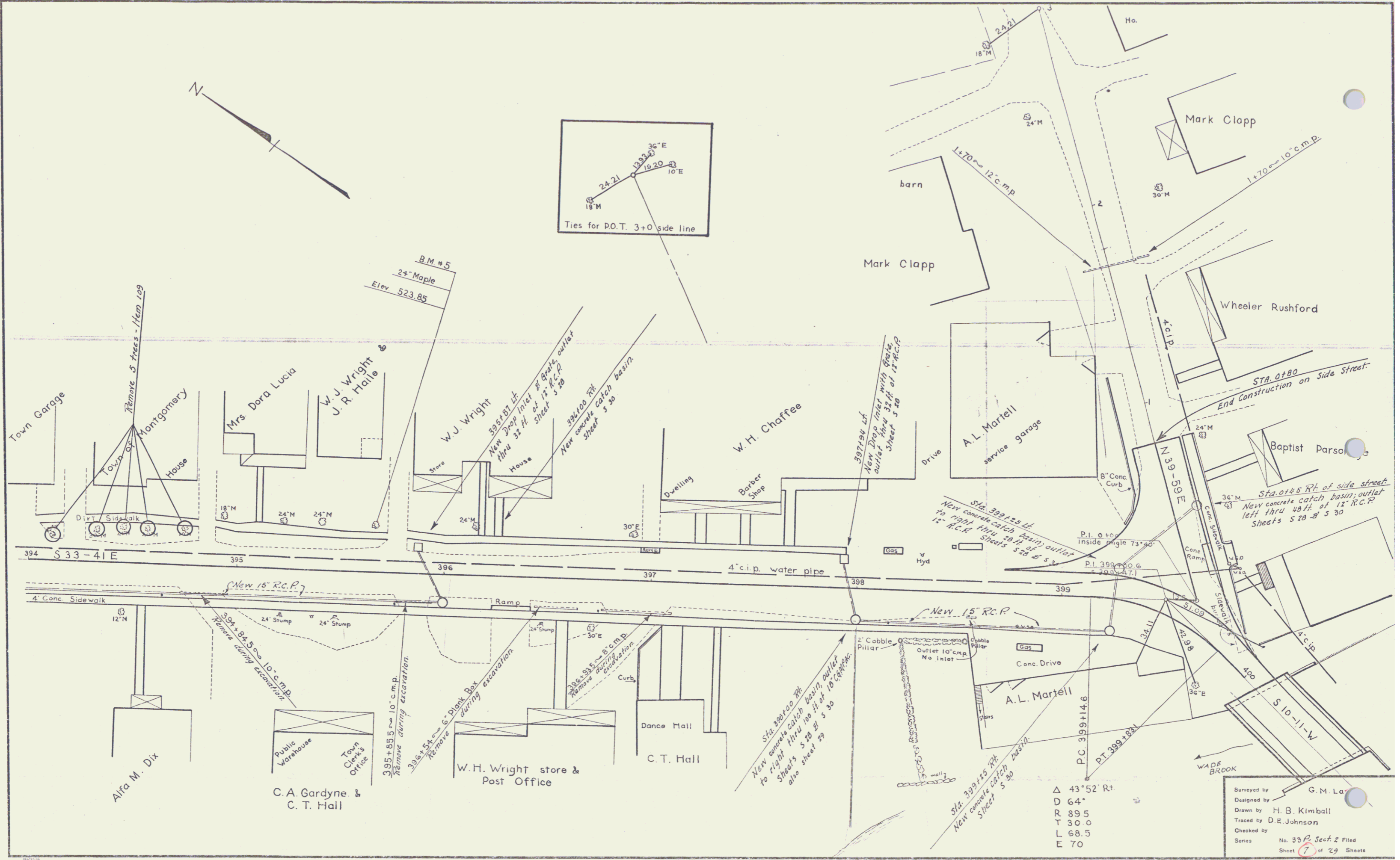
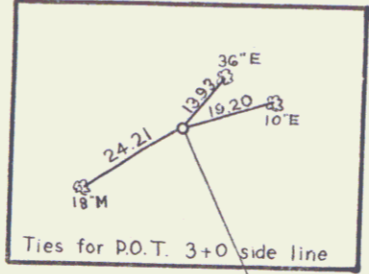
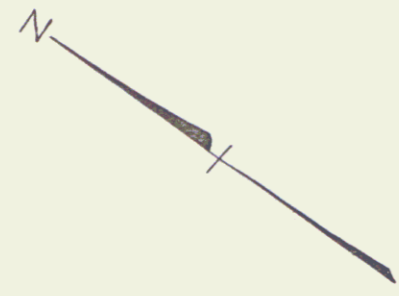
Sta. 388+00 to 394+00
18" Sub- π = se of Gravel

Station	Elevation
388	516.40
388	515.30
388	516.6
388	515.60
389	516.8
389	515.81
389	517.2
389	516.35
389	516.41
389	516.54
389	516.76
389	517.5
389	516.91
389	516.97
389	517.9
389	517.25
389	517.38
389	517.7
389	517.50
389	517.53
389	517.60
389	517.8
389	517.71
389	517.86
389	517.97
389	518.5
389	518.28
389	518.55
389	518.55
389	518.2
389	518.79
389	518.6
389	518.96
389	518.7
389	519.40
389	519.0
389	519.72
389	520.04
389	520.04
389	520.80
389	520.7
389	520.8
389	520.9
389	520.9
389	520.70
389	521.6
389	521.70
389	521.70
389	521.55
389	521.55

B.M. #4 Spike in Root of 24" Maple 22.5 Lt. sta 389+27 Elev. 517.63

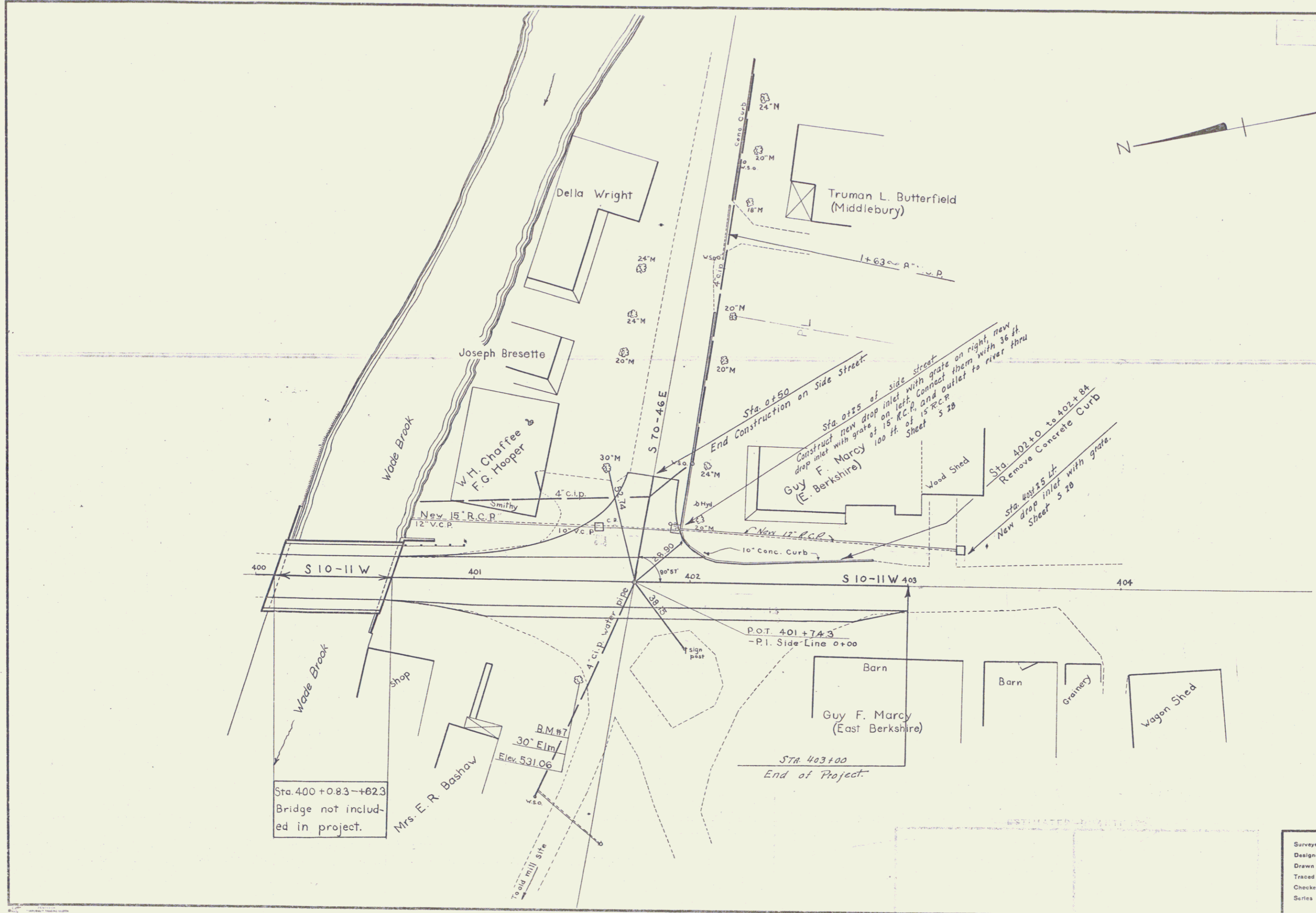
GRANTOR	GRANTEE	RECORDED	REMARKS
W.D.O.E.	ALFA DIX	BOOK 23	51 of 11
11-26-40		PAGE 23	DATE 11-26-40
			CULV. AT 393

Montgomery Center
33-14- section 2
Sheet 6 of 29



Δ	43°52' Rt
D	64'
R	89.5
T	30.0
L	68.5
E	70

Surveyed by G. M. La...
 Designed by
 Drawn by H. B. Kimball
 Traced by D. E. Johnson
 Checked by
 Series No. 332 Sect. 2 Filed
 Sheet 7 of 29 Sheets



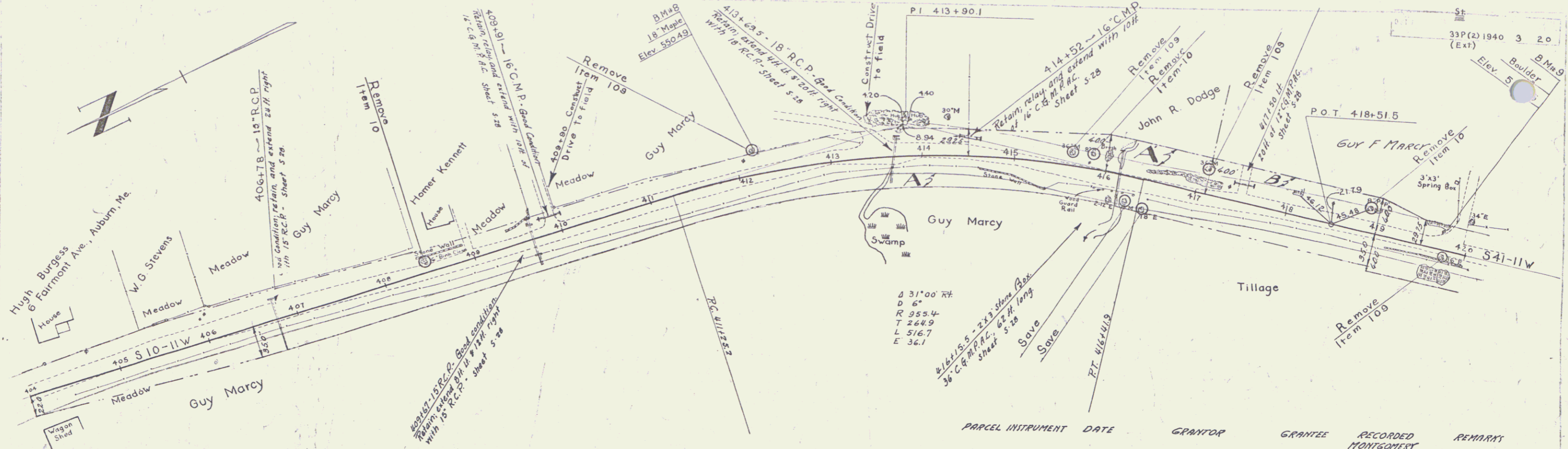
Sta. 400+0.83-+023
Bridge not included in project.

B.M. #7
30' Elm
Elev. 531.06

P.O.T. 401+74.3
-R.I. Side-Line 0+00

Sta. 403+00
End of Project.

Surveyed by G.M. Lane
Designed by
Drawn by
Traced by D.E. Johnson
Checked by
Series No. 33 P. Sec. 2 Filed
Sheet (2) of 29 Sheets
1 of 20 (Ext.)

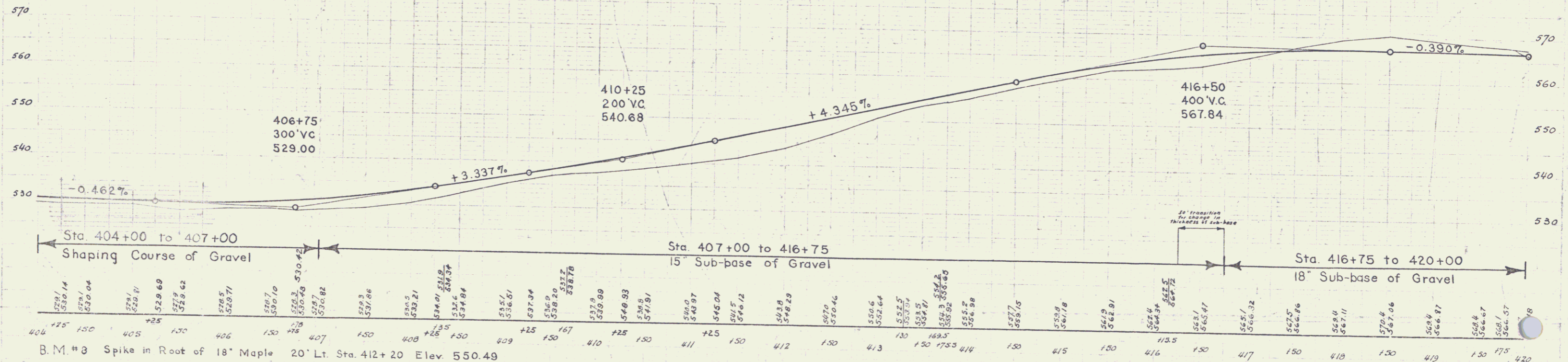


$\Delta 31'00''$ RT
 $D 6'$
 $R 955.4$
 $T 264.9$
 $L 516.7$
 $E 36.1$

$\frac{1}{2}$ 16" x 16" C.M.P. R.C.P. 66 H. long
 36' C.B.M.P.R.C. Sheet 5-28
 Save
 Save
 RT. W/44x19

PARCEL INSTRUMENT	DATE	GRANTOR	GRANTEE	RECORDED MONTGOMERY	REMARKS
A B	W.D.O.E	11-5-40	GUY F. MARCY	ST OF 17 25 28 11-3-40	
A'	W.D.O.E	10-31-40	JOHN R. DODGE	ST OF 17 25 43 11-3-40	

Index
 Sheets 1-6 Layouts + Profiles
 Sheets 7-20 Cross Sections



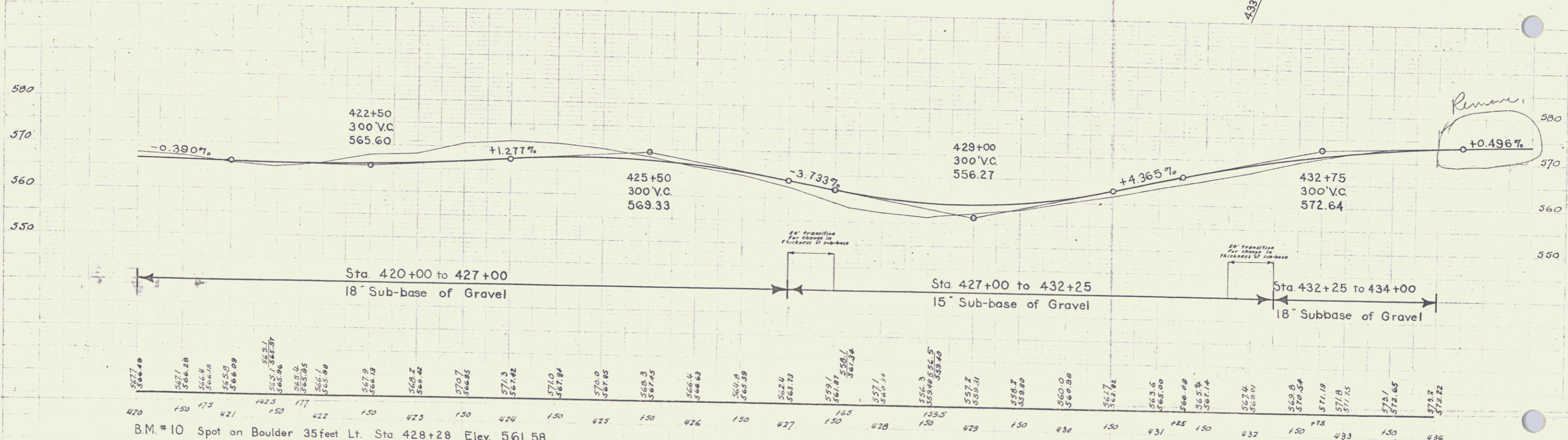
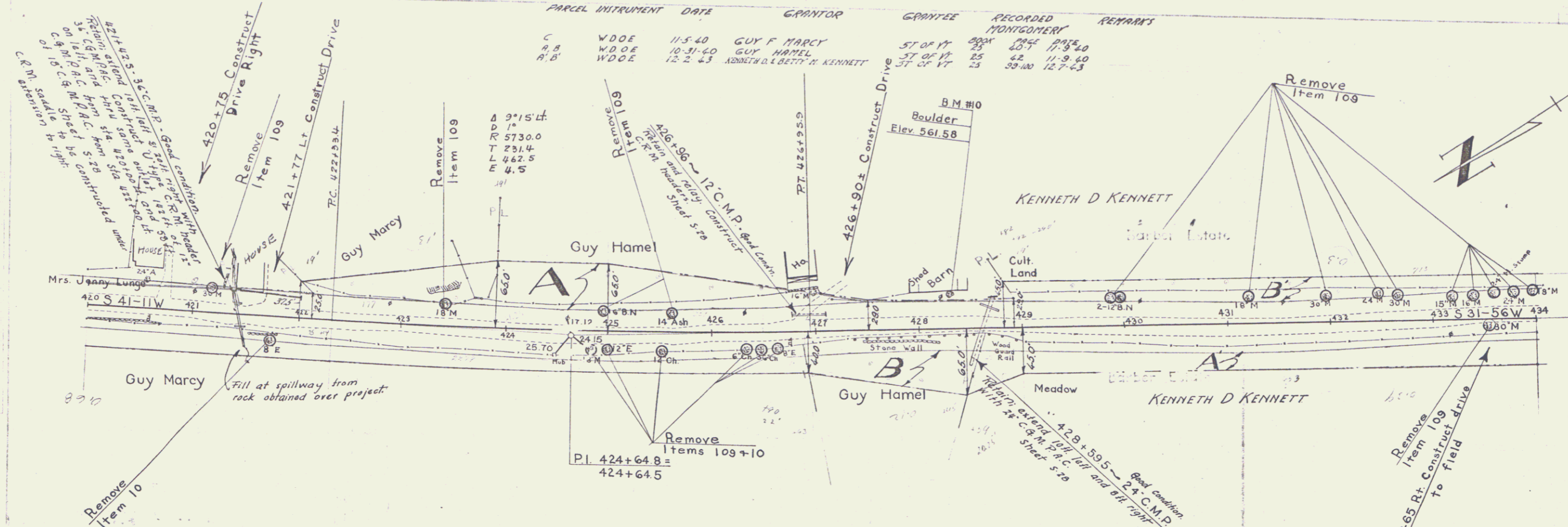
B.M. #8 Spike in Root of 18' Maple 20' Lt. Sta. 412+20 Elev. 550.49
 B.M. #9 Spot on Boulder 22.5 Lt. Sta. 419+75 Elev. 570.95

This profile
 not const.
 but shows
 R.O.W. for
 S.14001
 (1957)
 Mont.

Montgomery - 33 P. 2 - Extension
 Sheet 3 of 20 Sheets
 DIST. #8 PLAN 57

PARCEL INSTRUMENT	DATE	GRANTOR	GRANTEE	RECORDED MONTGOMERY	REMARKS
C	W.D.O.E.	11-5-40	GUY F. MARCY	ST. OF VT. 2024	11-9-40
A, B	W.D.O.E.	10-31-40	GUY HAMEL	ST. OF VT. 42	11-9-40
A, B	W.D.O.E.	12-2-43	ANNETH D. & BETTY H. KENNETT	ST. OF VT. 23	12-7-43

33 P (2) 1940
(Ext) 4 2.0



B.M. #10 Spot on Boulder 35 feet Lt. Sta 428+28 Elev. 561.58

8

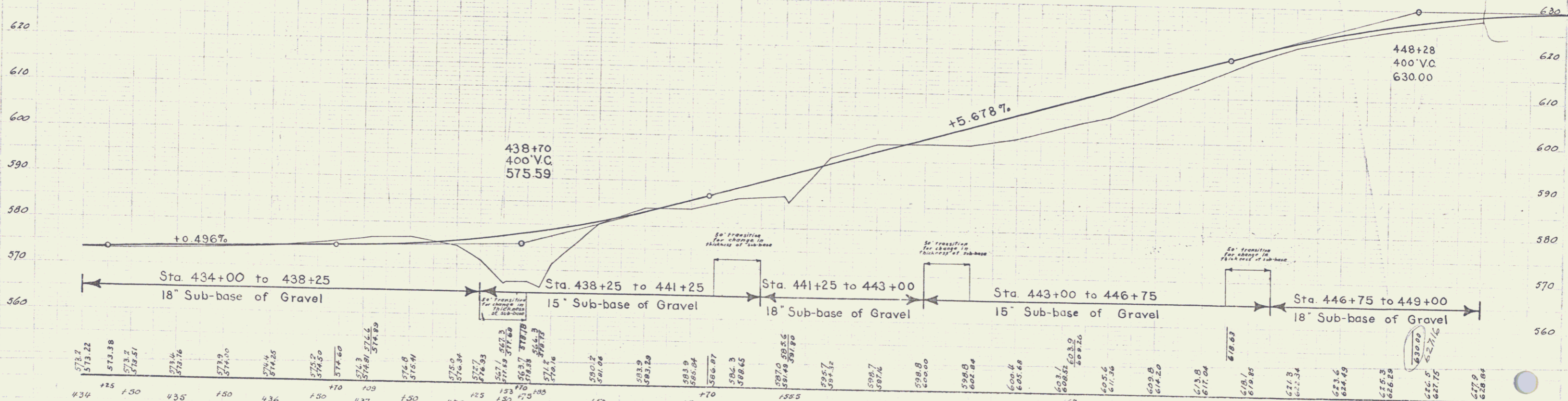
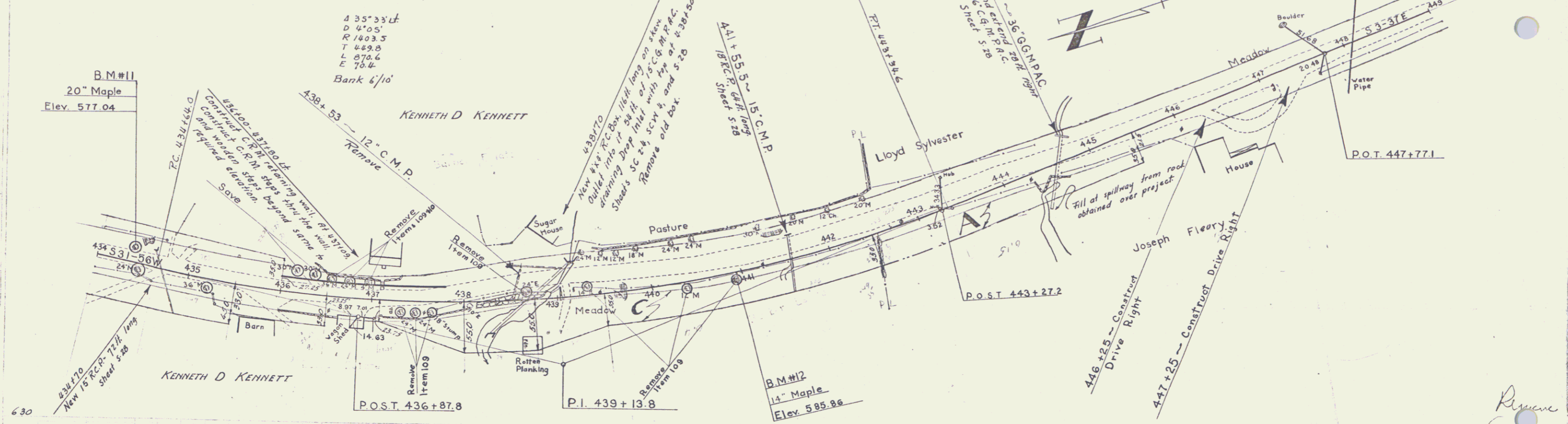
Note: Drive at 436+35 to be discontinued at 435+75 ± as directed by the Engineer.

PARCEL INSTRUMENT	DATE	GRANTOR	GRANTEE	RECORDED MONTGOMERY	REMARKS
A	W.D.O.E. 11-5-40	JOSEPH FLEURY	ST. OF VT.	12940	
C	W.D.O.E. 12-2-43	KENNETH D. KENNETT	ST. OF VT.	37100	12-7-43

33P(2)1040 5 20
(EXT)

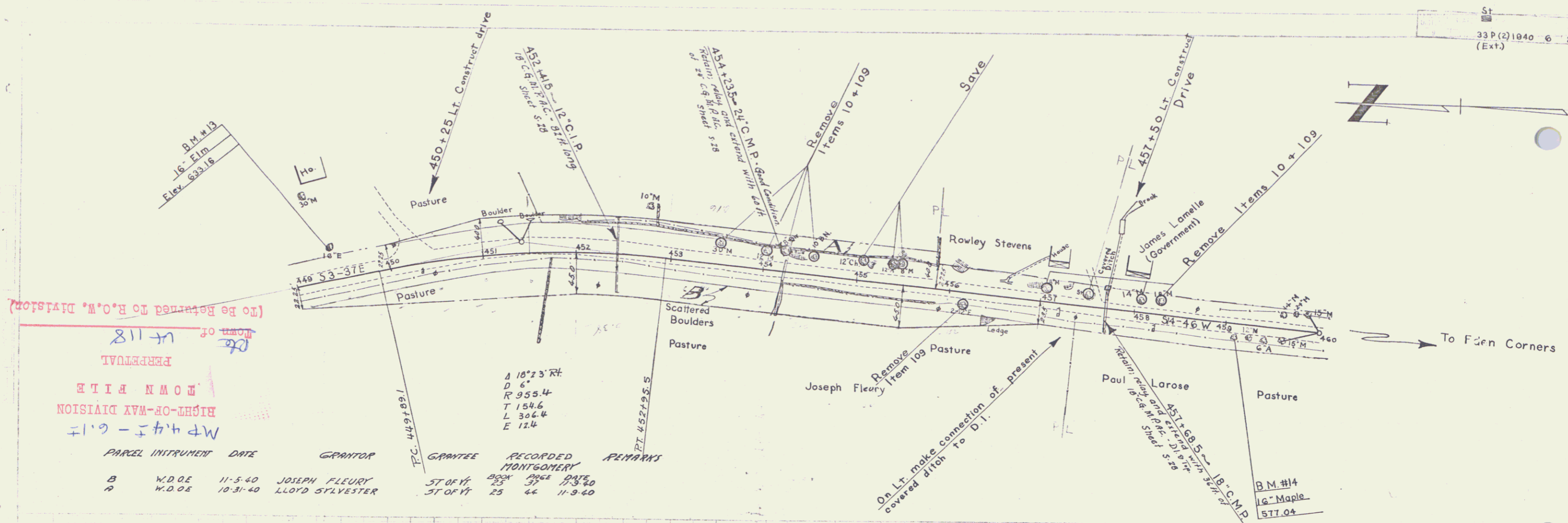
Buley Johnson
S/1/46
3/1/46

B.M.#11
20" Maple
Elev. 577.04

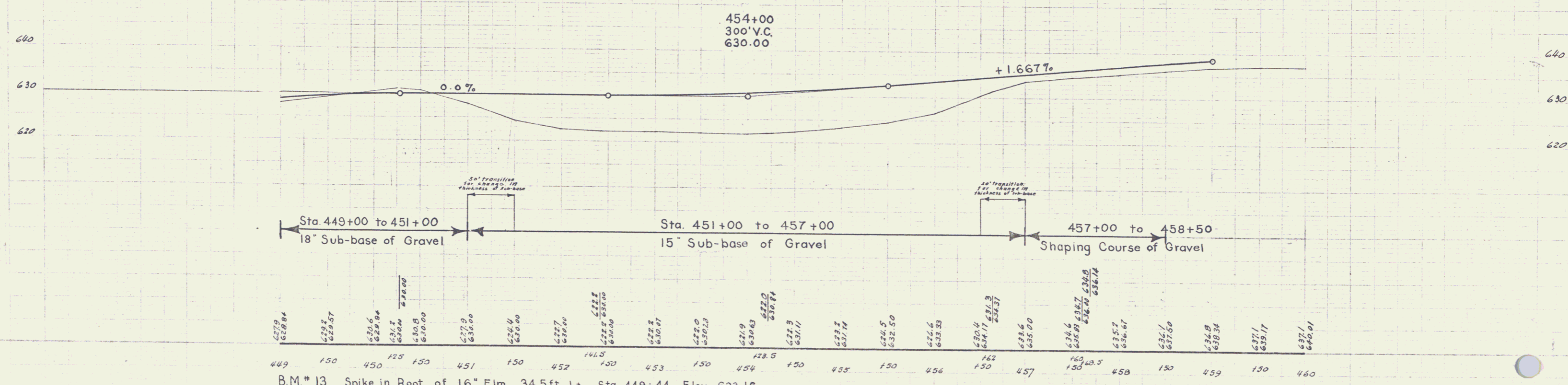


B.M.#11 Spike in Root of 20" Maple 25' Lt. Sta. 434+38 Elev. 577.04
B.M.#12 Spike in Root of 14" Maple 4.5' Rt. Sta. 440+94.5 Elev. 585.86

Montgomery 33P-2-Extension
Sheet 5 of 20 Sheets



(To Be Returned to R.O.W. Division)
 MOUNTAIN VIEW
 PERPETUAL
 MOUNTAIN VIEW
 HIGHWAY DIVISION
 449+00 - 450+00



B.M. #13 Spike in Root of 16" Elm 34.5 ft. Lt. Sta. 449+44 Elev. 633.16
 B.M. #14 Spike in Trunk of 16" Maple 14 ft. Rt. Sta. 459+11 Elev. 637.56