

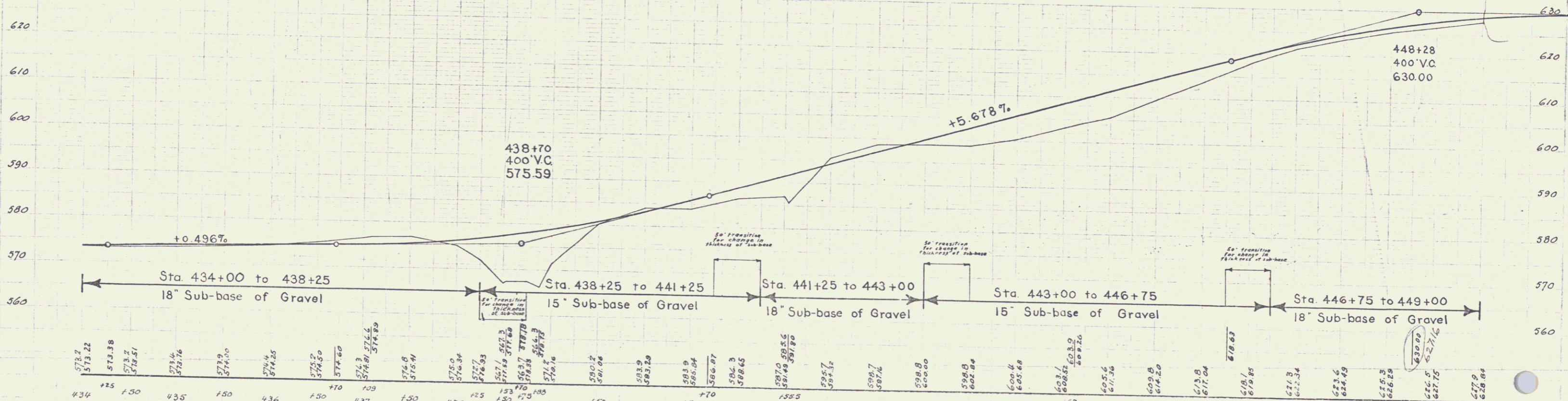
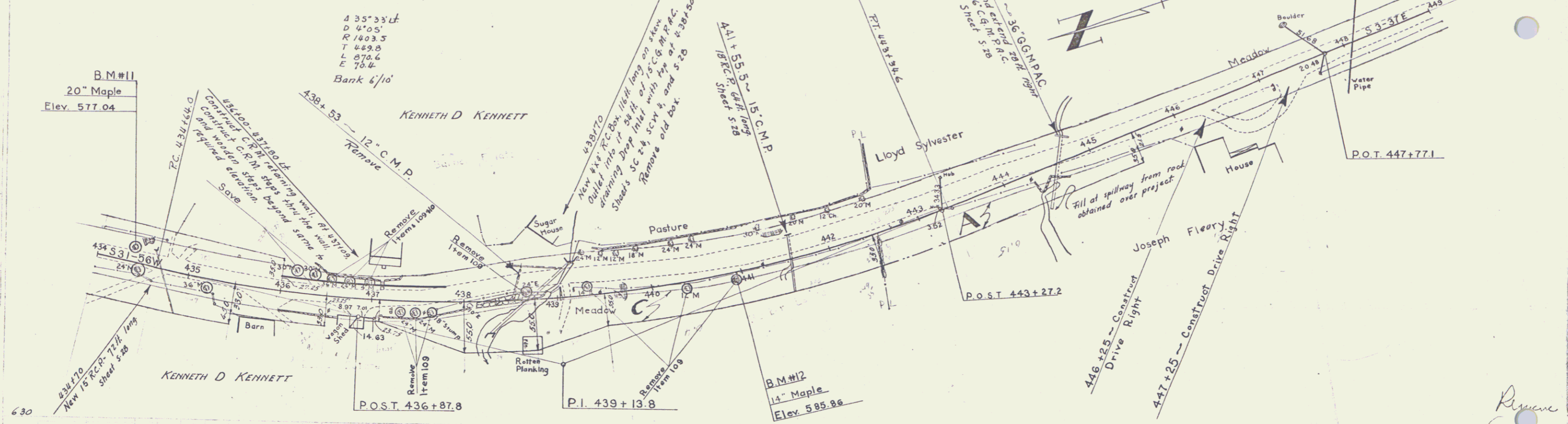
Note: Drive at 436+35 to be discontinued at 435+75 ± as directed by the Engineer.

PARCEL INSTRUMENT	DATE	GRANTOR	GRANTEE	RECORDED MONTGOMERY	REMARKS
A	W.D.O.E. 11-5-40	JOSEPH FLEURY	ST. OF VT.	12940	
C	W.D.O.E. 12-2-43	KENNETH D. KENNETT	ST. OF VT.	37100	12-7-43

33P(2)1040 5 20
(EXT)

Buley Johnson
S/1/46
3/1/46

B.M.#11
20" Maple
Elev. 577.04



Sta.	Elev.	Sta.	Elev.	Sta.	Elev.	Sta.	Elev.	Sta.	Elev.	Sta.	Elev.	Sta.	Elev.	Sta.	Elev.
434	573.7	435	573.22	436	573.38	437	573.2	438	573.57	439	573.16	440	574.0	441	574.25
442	574.2	443	574.5	444	574.2	445	574.6	446	574.0	447	574.25	448	574.6	449	574.2
450	574.6	451	574.2	452	574.6	453	574.0	454	574.25	455	574.6	456	574.0	457	574.25
460	574.6	461	574.2	462	574.6	463	574.0	464	574.25	465	574.6	466	574.0	467	574.25
470	574.6	471	574.2	472	574.6	473	574.0	474	574.25	475	574.6	476	574.0	477	574.25
480	574.6	481	574.2	482	574.6	483	574.0	484	574.25	485	574.6	486	574.0	487	574.25
490	574.6	491	574.2	492	574.6	493	574.0	494	574.25	495	574.6	496	574.0	497	574.25
500	574.6	501	574.2	502	574.6	503	574.0	504	574.25	505	574.6	506	574.0	507	574.25
510	574.6	511	574.2	512	574.6	513	574.0	514	574.25	515	574.6	516	574.0	517	574.25
520	574.6	521	574.2	522	574.6	523	574.0	524	574.25	525	574.6	526	574.0	527	574.25
530	574.6	531	574.2	532	574.6	533	574.0	534	574.25	535	574.6	536	574.0	537	574.25
540	574.6	541	574.2	542	574.6	543	574.0	544	574.25	545	574.6	546	574.0	547	574.25
550	574.6	551	574.2	552	574.6	553	574.0	554	574.25	555	574.6	556	574.0	557	574.25
560	574.6	561	574.2	562	574.6	563	574.0	564	574.25	565	574.6	566	574.0	567	574.25
570	574.6	571	574.2	572	574.6	573	574.0	574	574.25	575	574.6	576	574.0	577	574.25
580	574.6	581	574.2	582	574.6	583	574.0	584	574.25	585	574.6	586	574.0	587	574.25
590	574.6	591	574.2	592	574.6	593	574.0	594	574.25	595	574.6	596	574.0	597	574.25
600	574.6	601	574.2	602	574.6	603	574.0	604	574.25	605	574.6	606	574.0	607	574.25
610	574.6	611	574.2	612	574.6	613	574.0	614	574.25	615	574.6	616	574.0	617	574.25
620	574.6	621	574.2	622	574.6	623	574.0	624	574.25	625	574.6	626	574.0	627	574.25
630	574.6	631	574.2	632	574.6	633	574.0	634	574.25	635	574.6	636	574.0	637	574.25

B.M.#11 Spike in Root of 20" Maple 25' Lt. Sta. 434+38 Elev. 577.04
B.M.#12 Spike in Root of 14" Maple 4.5' Rt. Sta. 440+94.5 Elev. 585.86