

BETTY M. KENNETT HOWARD & RAYMOND E. HOWARD

Two Cable Guard Rail
LI
230+50-241+00
230+51-238+16
234+13-241+00

Wood Guide Posts
LI
226+83-227+50
227+50-228+16
228+16-229+83
229+83-230+50
230+50-231+17
231+17-231+84
231+84-232+51
232+51-233+18
233+18-233+85
233+85-234+52
234+52-235+19
235+19-235+86
235+86-236+53
236+53-237+20
237+20-237+87
237+87-238+54
238+54-239+21
239+21-239+88
239+88-240+55
240+55-241+22

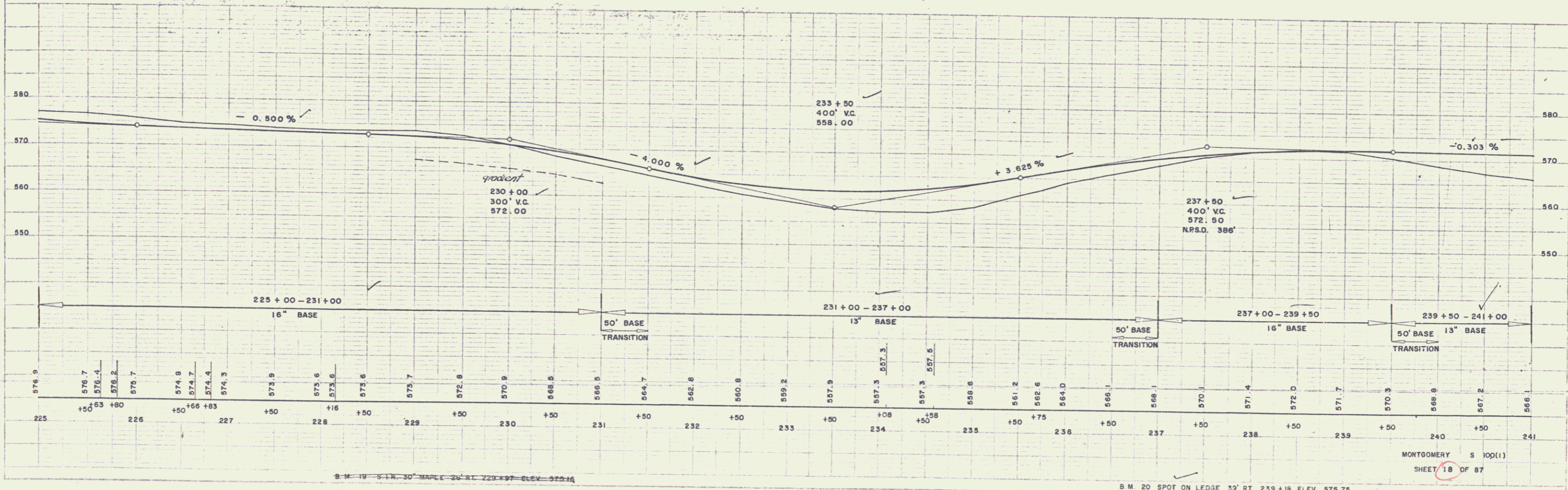
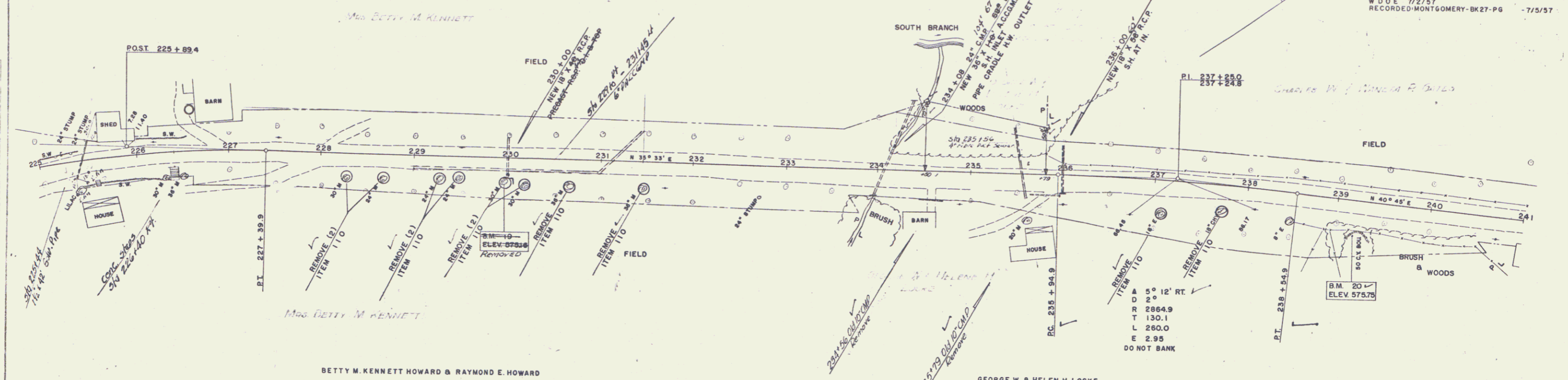
CONSTRUCT	DRIVES
226+83	LT
227+50	RT
228+16	LT
234+58	RT
235+75	RT
238+40	LT

#14 GEORGE W. & HELEN H. LOCKE
(A 0 0371) STA 234+18 - 235+79 ± LT
W.D.E. 8/28/56
RECORDED: MONTGOMERY-BK 27-PG 342-9/8/56

#15A CHARLES W. & WANETA P. GATES
SLOPE RIGHTS- STA 235+79-254+00 ± LT
SLOPE RIGHTS- STA 246+50-248+00 ± RT
CULVERT RIGHTS- STA 236+00 ±
W.D.E. 8/28/56
RECORDED: MONTGOMERY-BK 27-PG 341-9/8/56
#15B CHARLES W. & WANETA P. GATES
CULVERT RIGHTS- STA 242+63 ±
W.D.E. 7/2/57
RECORDED: MONTGOMERY-BK 27-PG 7/5/57

WESTER-MARTIN, INC.
10-55
NOTE: FROM THE LATEST RECORD
FILED IN THE OFFICE OF THE ENGINEER

WESTER-MARTIN, INC.
10-55
NOTE: FROM THE LATEST RECORD
FILED IN THE OFFICE OF THE ENGINEER



MONTGOMERY S 100(1)
SHEET 18 OF 87

10