

**INDEX OF SHEETS**

SHEET NO. 1	TITLE PAGE
2	TYPICAL CROSS-SECTION OF IMPROVEMENT SINGLE TACK COAT OF OUTBACK ASPHALT WITH CRUSHED PEA STONE, ITEM 314
3	ROADWAY STANDARD SHEET RS 56-1 (BANKING)
4	QUANTITY SHEET (ITEMS)
5	QUANTITY SHEET (DRAINAGE)
6-9	EARTHWORK SHEETS
10-20	PLAN AND PROFILE SHEETS
21	SUPERSTRUCTURE CONCRETE SLAB BRIDGE STA. 122+97.2
22	DETAILS OF ABUTMENT NO. 1
23	DETAILS OF ABUTMENT NO. 2
24	DETAILS OF 6"x4" REINFORCED CONCRETE BOX EXTENSION STA. 117+10
25	REINFORCING STEEL DETAILS
26	STANDARD STRUCTURE SHEET SS B-1 SLAB BRIDGES
27	STANDARD STRUCTURE SHEET SS-B-2 CABLE GUARD RAIL FOR BRIDGES
28	STANDARD STRUCTURE SHEET SC-1 BOX CULVERTS
29	STANDARD STRUCTURE SHEET SC-2 CULVERT DETAILS
30	STANDARD STRUCTURE SHEET BS 56-2 BARRICADES, SIGNS & LIGHTS (BRIDGES)
31	STANDARD STRUCTURE SHEET 58-20 DETAIL N.J.
32	ROADWAY STANDARD SHEET RS 56(3) MARKERS
32-A	ROADWAY STANDARD SHEET RS 56-4 (DRAINAGE)
33	ROADWAY STANDARD SHEET RS 56-6 (TYPICAL GRADING)
34	ROADWAY STANDARD SHEET RS 56-10 (TWO CABLE GUARD RAIL)
35	ROADWAY STANDARD SHEET RS 56-12 (BARRICADES, SIGNS & LIGHTS) (ROADWAY)
36	ROADWAY STANDARD SHEET RS 56-14 (PRECAST R.G.P. DROP INLET)
37-82	CROSS-SECTION SHEETS
83-87	CHANNEL SECTION SHEETS

STANDARD STRUCTURE SHEET APPROVED BY THE CHIEF ENGINEER, VERMONT STATE DEPARTMENT OF HIGHWAYS  
RS 56-12 MAY 12, 1956

STATE OF VERMONT  
DEPARTMENT OF HIGHWAYS

PROPOSED IMPROVEMENT

FEDERAL AID SECONDARY

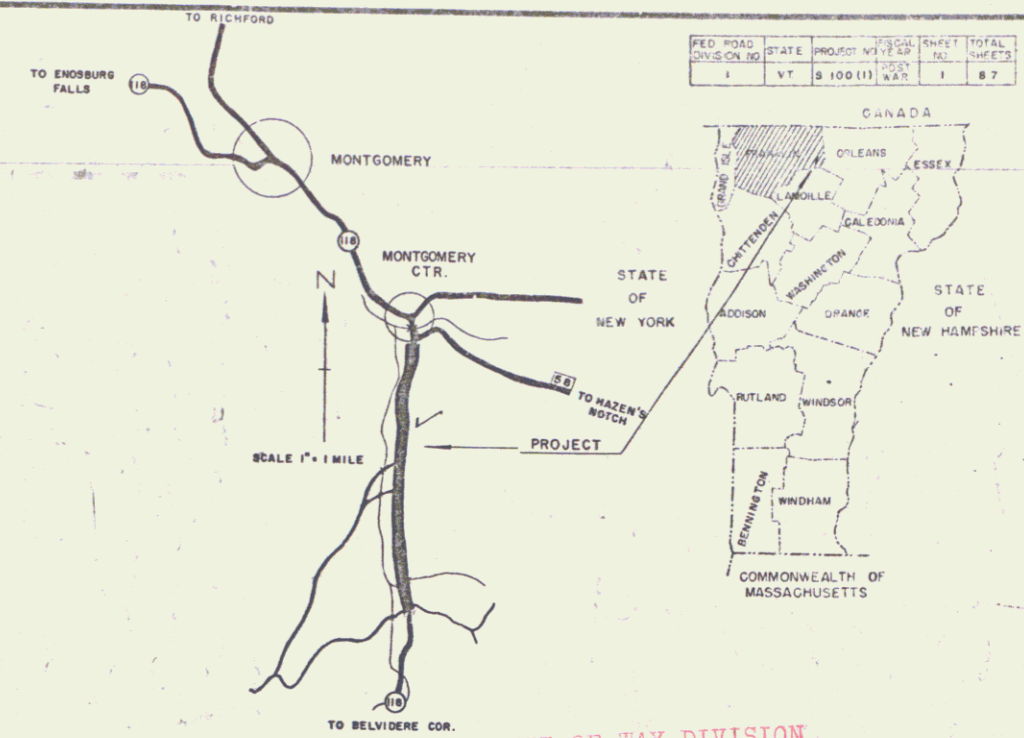
TOWN OF MONTGOMERY

COUNTY OF FRANKLIN

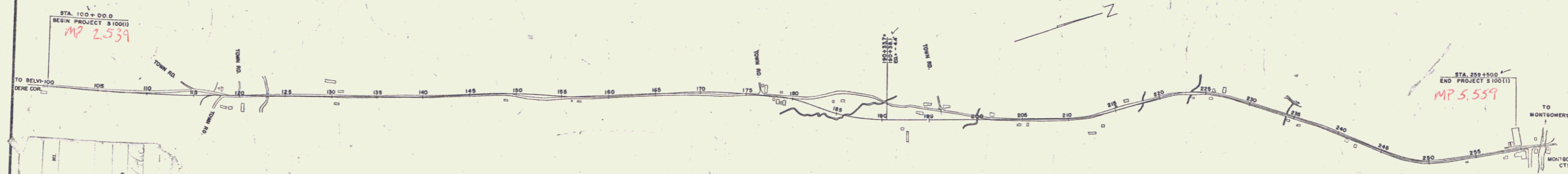
VERMONT ROUTE 118

BELVIDERE COR.-MONTGOMERY CTR. ROAD

BEGINNING AT A POINT APPROXIMATELY 16,086 FEET SOUTH OF THE INTERSECTION WITH ROUTE 58 AND EXTENDING NORTHERLY 15,945.6 FEET. LENGTH OF PROJECT 15,945.6 FEET = 3.020 MILES.



RIGHT-OF-WAY DIVISION  
TOWN FILE  
PERPETUAL  
Form of vt-118  
(To Be Returned To R.O.W. Division)



CONTRACTOR - BURNETT & CAMPBELL  
RES. ENGR' - P. F. KARR  
CONSTRUCTION COMM. - SEPT. 27, 1957

GROUND ELEVATION	DATUM	FEET	LINE
GRADE ELEVATION	DATUM	FEET	LINE
CURVE DATA			
DEFLECTION OF ANGLE	Δ		
DEGREE OF CURVE	D		
RADIUS OF CURVE	R		
TANGENT DISTANCE	T		
LENGTH OF CURVE	L		
EXTERNAL DISTANCE	E		
POINT OF INTERSECTION	P.I.		
POINT OF CURVE	P.C.		
POINT OF TANGENT	P.T.		
POINT ON TANGENT	P.O.T.		
POINT ON SUB-TANGENT	P.O.S.T.		

Notes For ROW  
See 338-2-Ext. Montgomery

SCALES

TITLE	1" = 500'
TYPICAL	1" = 50'
PLAN	1" = 50'
PROFILE	HORIZONTAL 1" = 50'
	VERTICAL 1" = 10'
CROSS-SECTIONS	1" = 5' @ 10'

PROJECT NAME AND NUMBER		TYPE	PAVT. AREA
MONTGOMERY S 100 (1)		BY TR. PEASTONE	35,435
RECORD PLANS			
MATERIALS			
CEMENT	ATLAS DUBAPLASTIC HUDSON FALLS, N.Y.	ACCOMP	N.E. MET. PIPE CO., PALMER, MASS.
SAND	A. ANDERSON, LUNenburg, VT.	REINF. STEEL	VT. STRUCT. STEEL, DUNSTON, VT.
TIMBER PILING	LUNenburg, VT.	C.G. RAIL	BETH. STEEL CORP.
STONE	A. ANDERSON, STALBANS, VT.	GRAVEL	RIV. GRAVEL - MONTGOMERY, VT.
ASPHALT	SOC. VAC. RIVERSIDE, R.I.	CR. GRAVEL	PARADIS PIT
R.C.P.	VT. CONC. PIPE CO., WINDHAM, VT.		
CONTRACTOR	BURNETT & CAMPBELL	CONTRACT DATED	OCT. 25, 1956
RES. ENGR'	R. F. KARR	"	STARTED OCT. 30, 1956
INSPECTORS	G. MEYERS	"	COMPLETED SEPT. 27, 1957
RECORD PLANS	P. F. KARR	"	ACCEPTED SEPT. 27, 1957

THESE PLANS ARE SUBJECT TO SUCH REVISIONS AS MAY BE REQUIRED BY THE BUREAU OF PUBLIC ROADS OR THE COMMISSIONER OF HIGHWAYS.

CONSTRUCTION IS TO BE CARRIED ON IN ACCORDANCE WITH THE PLANS AND THE STANDARD SPECIFICATIONS FOR HIGHWAY AND BRIDGE CONSTRUCTION OF JANUARY 1956, SUBMITTED TO THE BUREAU OF PUBLIC ROADS FOR APPROVAL ON APRIL 9, 1956 INCLUDING ALL SUBSEQUENT APPROVED REVISIONS AND SUCH REVISED SPECIFICATIONS AND SPECIAL PROVISIONS AS ARE SUBMITTED WITH THE PLANS.

NOTE: ANY FURTHER INFORMATION CONCERNING THIS PROJECT SHOULD BE OBTAINED FROM THE FIELD ENGINEER OR THE ESTIMATE DIVISION.

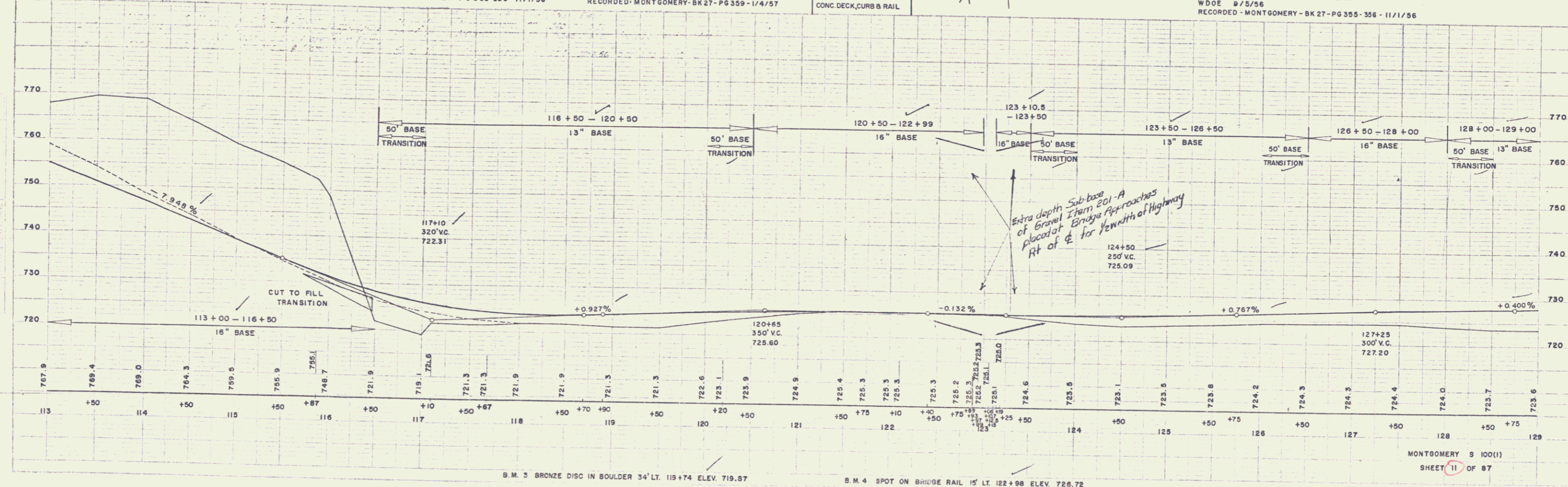
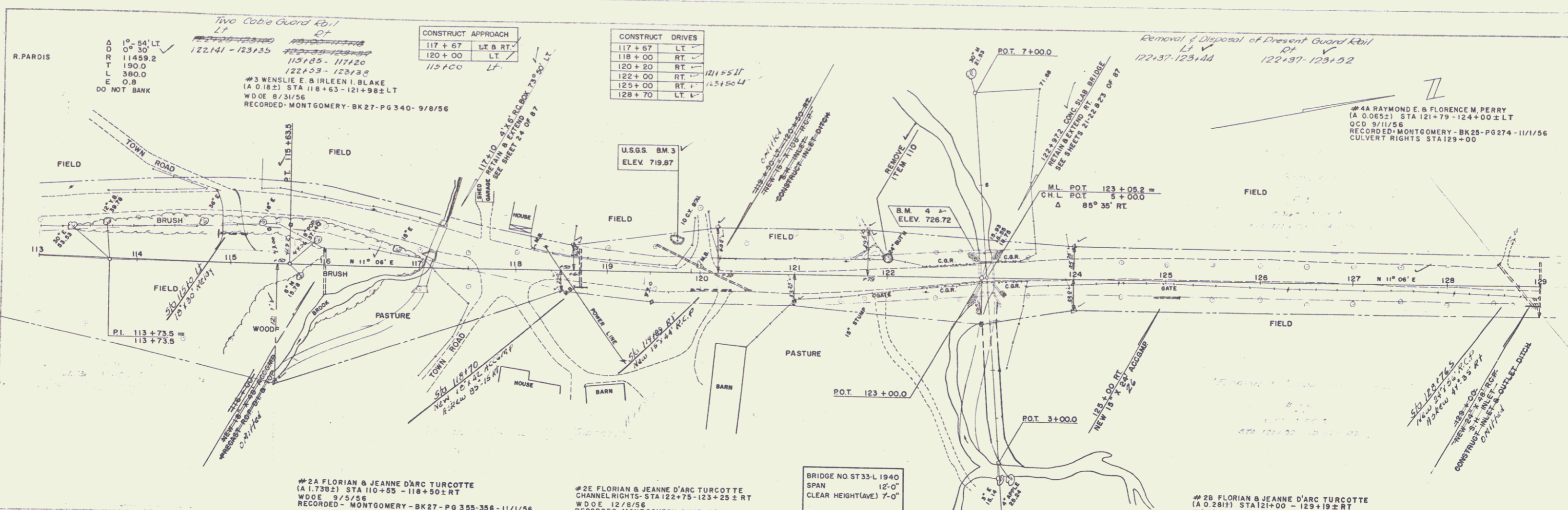
DEPARTMENT OF COMMERCE  
BUREAU OF PUBLIC ROADS

Date 2/8/1956  
Pin# 00RS11

APPROVED <u>P. F. KARR</u> DATE <u>Feb. 6, 1956</u>	APPROVED <u>A. D. Bull</u> DATE <u>Feb. 6/56</u>	APPROVED <u>J. O. Duce</u> DATE <u>Feb 8, 1956</u>	APPROVED <u>J. C. Wessett</u> DATE <u>Feb 6, 1956</u>	APPROVED <u>W. H. Wessett</u> DATE <u>Feb 15, 1956</u>
--	---	---	--	---

PROJECT S NO. 100(1)  
SHEET 1 OF 87 SHEETS  
WESTER-MARTIN, INC. CONSULTING ENGINEERS  
SOUTH BURLINGTON, VERMONT.





WESTER-MARTIN, INC. 9-55  
 WESTER-MARTIN, INC. 10-55

WESTER-MARTIN, INC. 9-55  
 WESTER-MARTIN, INC. 10-55

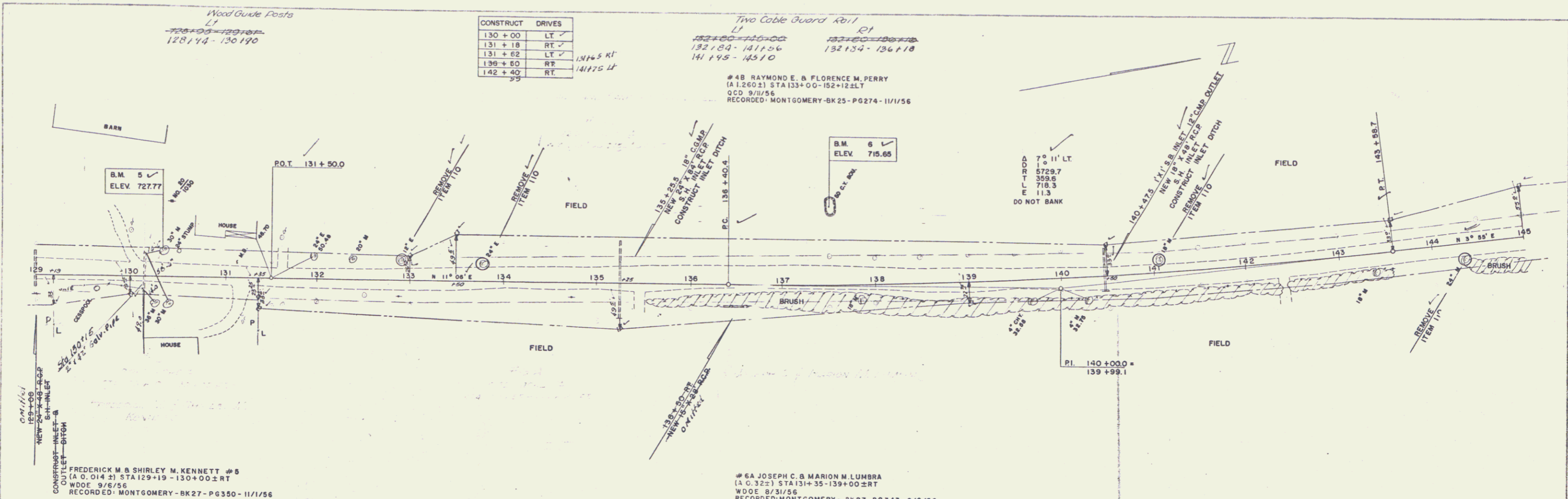
B.M. 3 BRONZE DISC IN BOULDER 34' LT. 119+74 ELEV. 719.87  
 B.M. 4 SPOT ON BRIDGE RAIL 15' LT. 122+98 ELEV. 726.72

MONTGOMERY 9 100(1)  
 SHEET 11 OF 87

3

PLAN  
 WESTER-MARTIN, INC. 8-15  
 100 N. W. 10th St., Ft. Lauderdale, Fla. 33304

PROFILE  
 WESTER-MARTIN, INC. 8-15  
 100 N. W. 10th St., Ft. Lauderdale, Fla. 33304

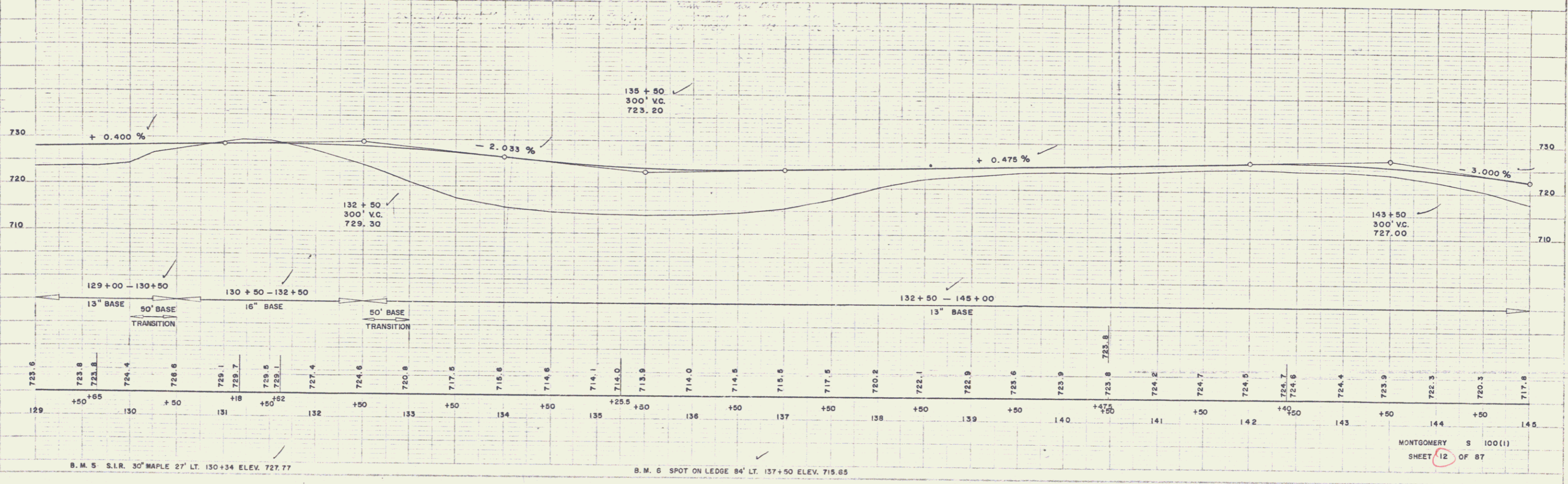


CONSTRUCT	DRIVES
130 + 00	LT ✓
131 + 18	RT ✓
131 + 62	LT ✓
139 + 60	RT ✓ 13145 RT
142 + 40	RT ✓ 14175 LT

Two Cable Guard Rail  
 LI RT  
 132+00-140+00 132+00-136+18  
 132+89-141+56 132+34-136+18  
 141+95-145+10  
 #48 RAYMOND E. & FLORENCE M. PERRY  
 (A 1.260±) STA 133+00-152+12±LT  
 O.C. 9/1/56  
 RECORDED MONTGOMERY-BK25-PG274-11/1/56

FREDERICK M. & SHIRLEY M. KENNETT #5  
 (A 0.014±) STA 129+19-130+00±RT  
 W.D. 9/6/56  
 RECORDED MONTGOMERY-BK27-PG350-11/1/56

#6A JOSEPH C. & MARION M. LUMBRA  
 (A 0.32±) STA 131+35-139+00±RT  
 W.D. 8/31/56  
 RECORDED MONTGOMERY-BK27-PG343-9/8/56



B. M. 5 S.L.R. 30' MAPLE 27' LT. 130+34 ELEV. 727.77

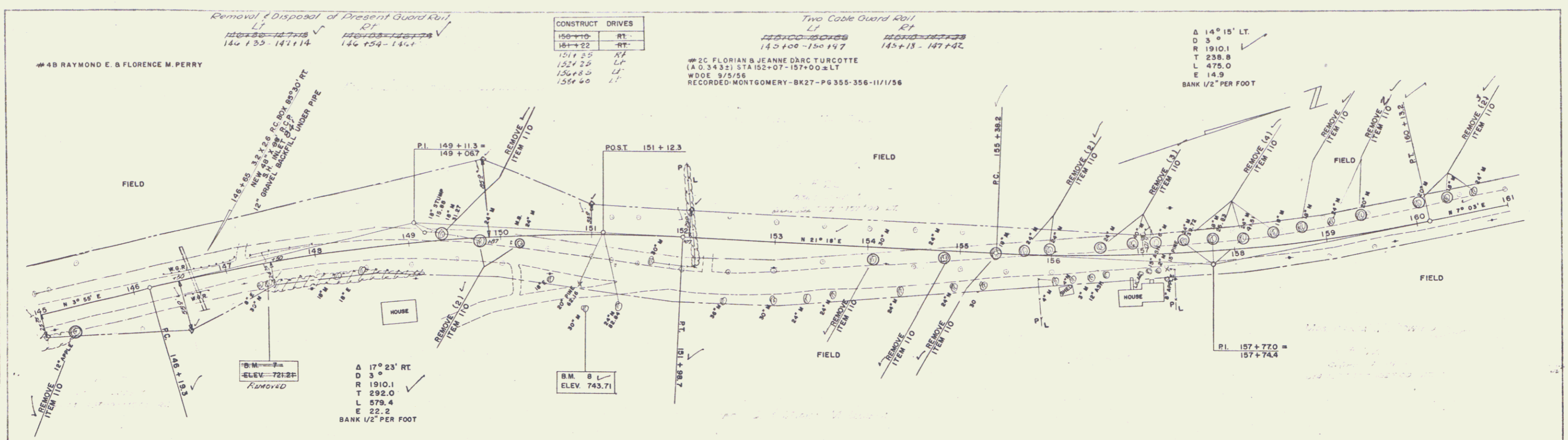
B. M. 6 SPOT ON LEDGE 84' LT. 137+50 ELEV. 715.65

MONTGOMERY S 100(1)  
 SHEET 12 OF 87

4

PLAN  
WESTER-MARTIN, INC. 10-58  
145+00 - 161+00  
MONTGOMERY COUNTY, MD.

PROFILE  
WESTER-MARTIN, INC. 10-58  
145+00 - 161+00  
MONTGOMERY COUNTY, MD.



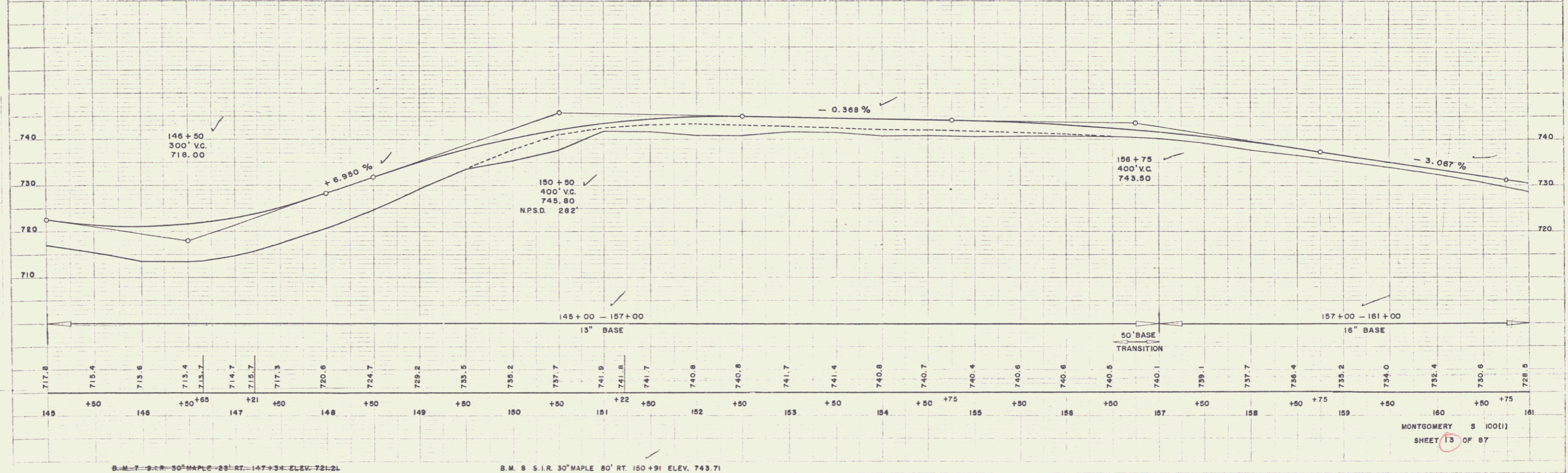
#4B RAYMOND E. & FLORENCE M. PERRY  
145+00 - 147+14  
146+00 - 146+00

#2C FLORIAN & JEANNE D'ARC TURCOTTE  
[A.O. 3432] STA 152+07 - 157+00 ± LT  
WDOE 9/5/56  
RECORDED MONTGOMERY - BK27 - PG 355-356 - 11/1/56

#6B JOSEPH C. & MARION M. LUMBRA  
[A.O. 0832] STA 145+00 - 147+50 ± RT  
WDOE 8/31/56  
RECORDED MONTGOMERY - BK27 - PG 343-9/8/56

G. H. BOSLEY

#8C WANDA M. GOWING  
SLOPE RIGHTS - STA 159+50 - 162+00 ± RT  
WDOE 9/5/56  
RECORDED MONTGOMERY - BK27 - PG 358/359 - 11/1/56



B.M. 7 - S. R. 30' MAPLE - 28' RT - 147+34 - ELEV. 721.21

B.M. 8 - S. I. R. 30' MAPLE - 80' RT - 150+91 - ELEV. 743.71

MONTGOMERY 3 100(1)  
SHEET 13 OF 87

5

#2D FLORIAN & JEANNE D'ARC TURCOTTE  
 (A.O. 0.017+) STA 165+00-166+15± LT  
 W.D.O.E. 9/5/56  
 RECORDED: MONTGOMERY-BK 27-PG 355/356-11/1/56

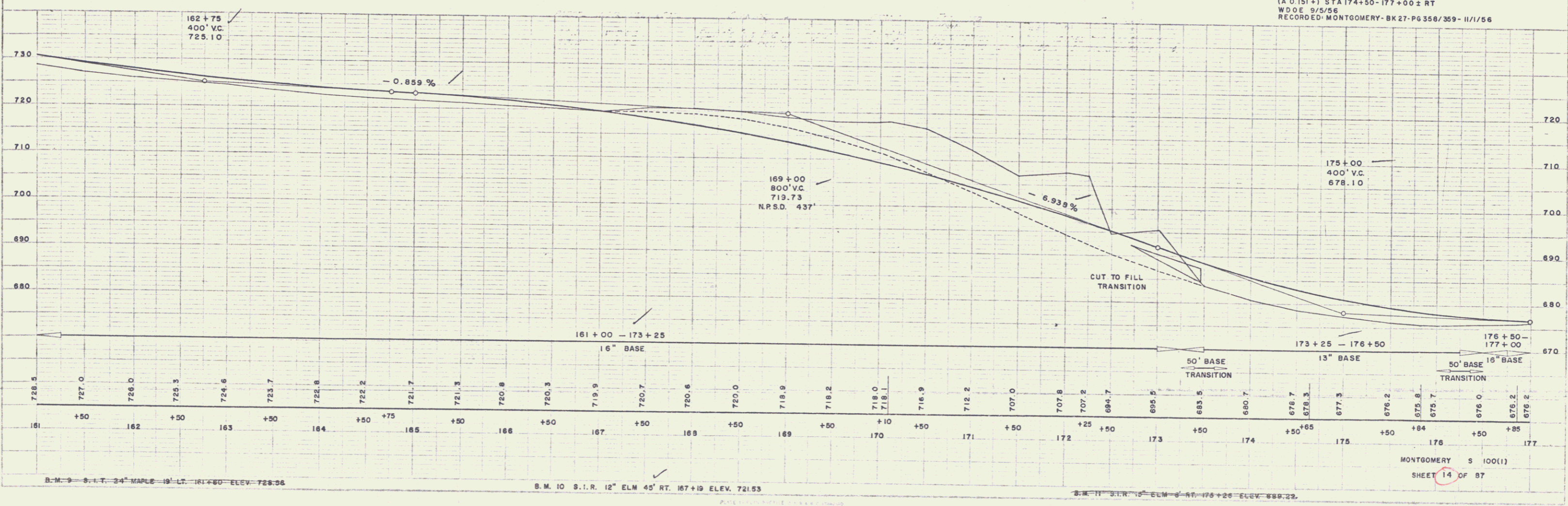
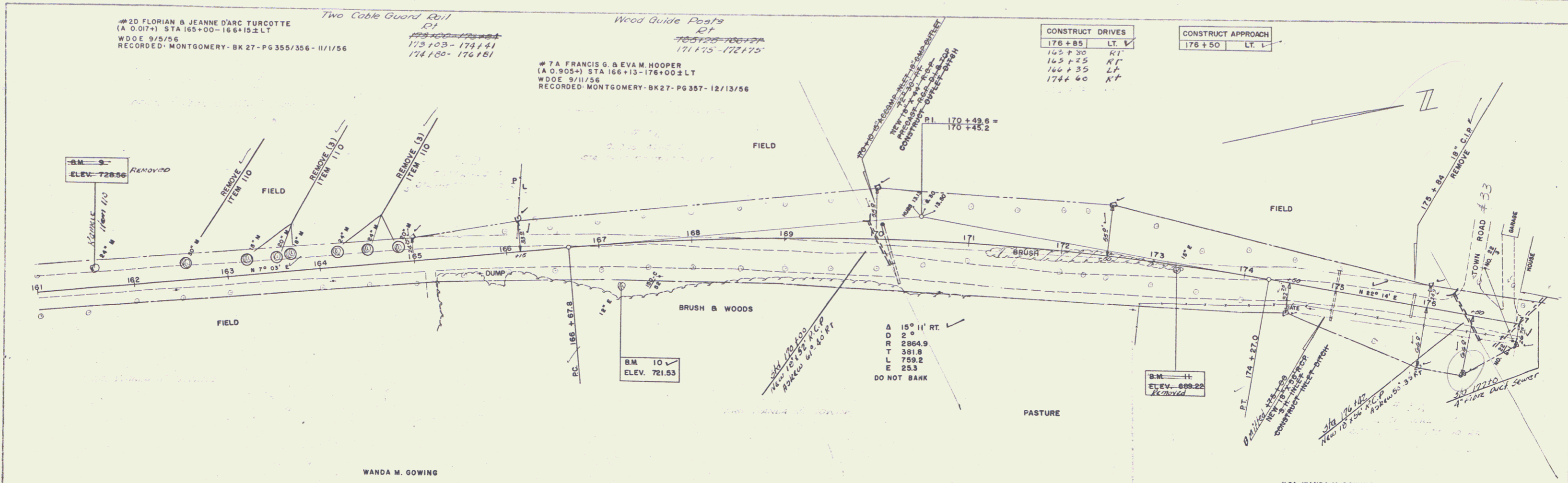
Two Cable Guard Rail  
 RT  
 173+03-174+41  
 174+80-176+61

Wood Guide Posts  
 RT  
 171+75-172+75

#7A FRANCIS G. & EVAM HOOPER  
 (A.O. 9.05+) STA 166+13-176+00± LT  
 W.D.O.E. 9/11/56  
 RECORDED: MONTGOMERY-BK 27-PG 357-12/13/56

CONSTRUCT DRIVES	
176+85	LT
165+30	RT
165+35	RT
166+35	LT
174+60	RT

CONSTRUCT APPROACH	
176+50	LT



FLAH  
 WEBSTER-MARTIN, INC.  
 P-45  
 10/27/56

PROFILE  
 WEBSTER-MARTIN, INC.  
 P-45  
 10/27/56

B.M. 9 S.I.T. 34" MAPLE 19" LT. 161+80 ELEV. 728.56

B.M. 10 S.I.R. 12" ELM 45" RT. 167+19 ELEV. 721.53

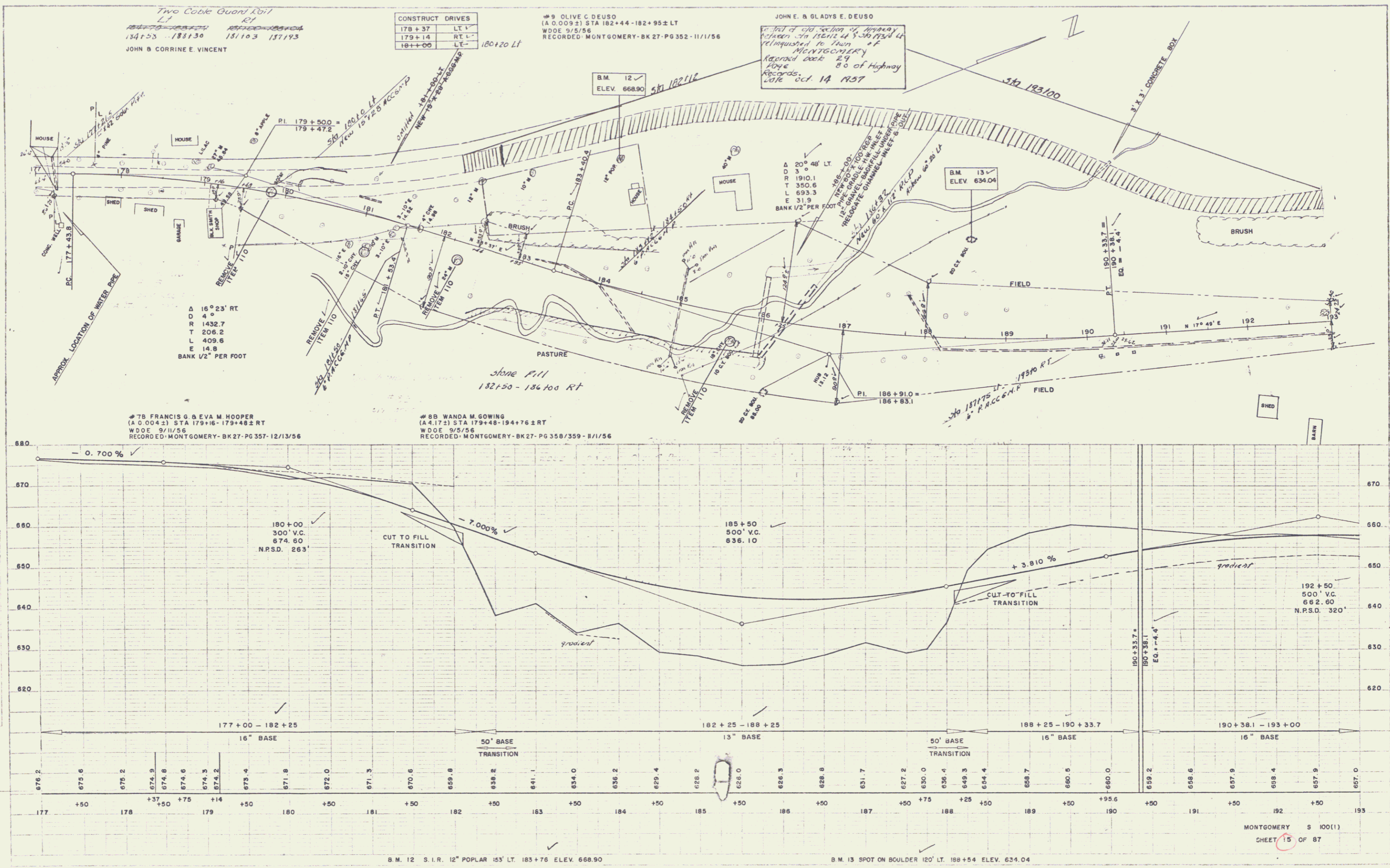
B.M. 11 S.I.R. 12" ELM 45" RT. 175+26 ELEV. 699.22

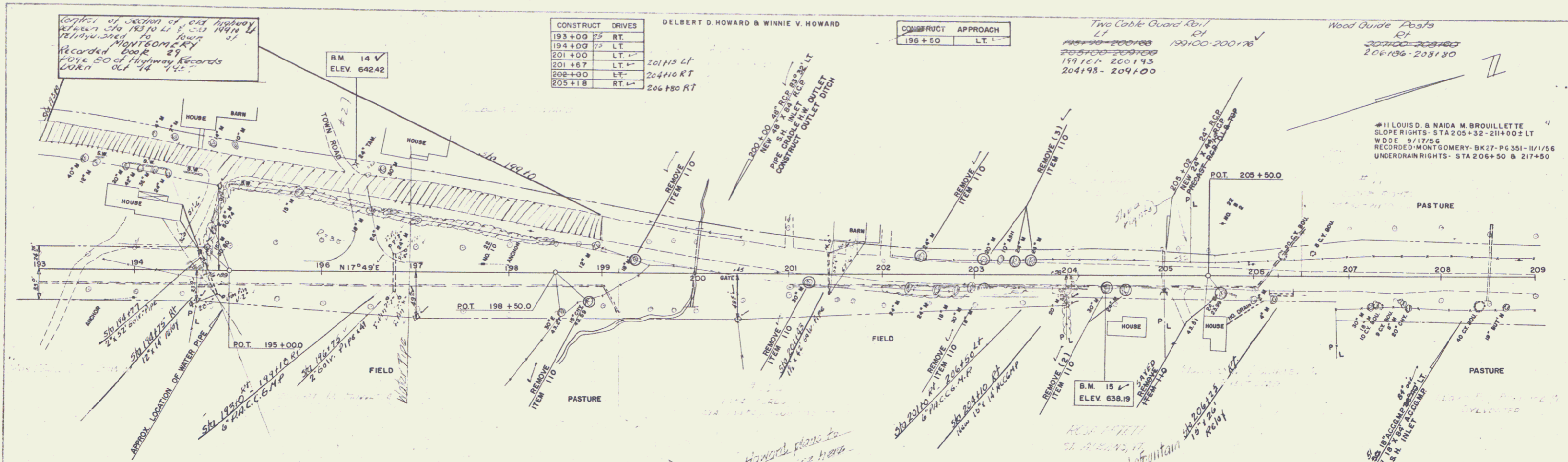
MONTGOMERY S 100(1)  
 SHEET 14 OF 87

6

WEBSTER-MARTIN, INC. 8-55  
 WESTER-MARTIN, INC. 10-55  
 FAY  
 ARCHITECTS  
 1100 N. W. 10th St.  
 MIAMI, FLA.

WEBSTER-MARTIN, INC. 8-55  
 WESTER-MARTIN, INC. 10-55  
 ARCHITECTS  
 1100 N. W. 10th St.  
 MIAMI, FLA.





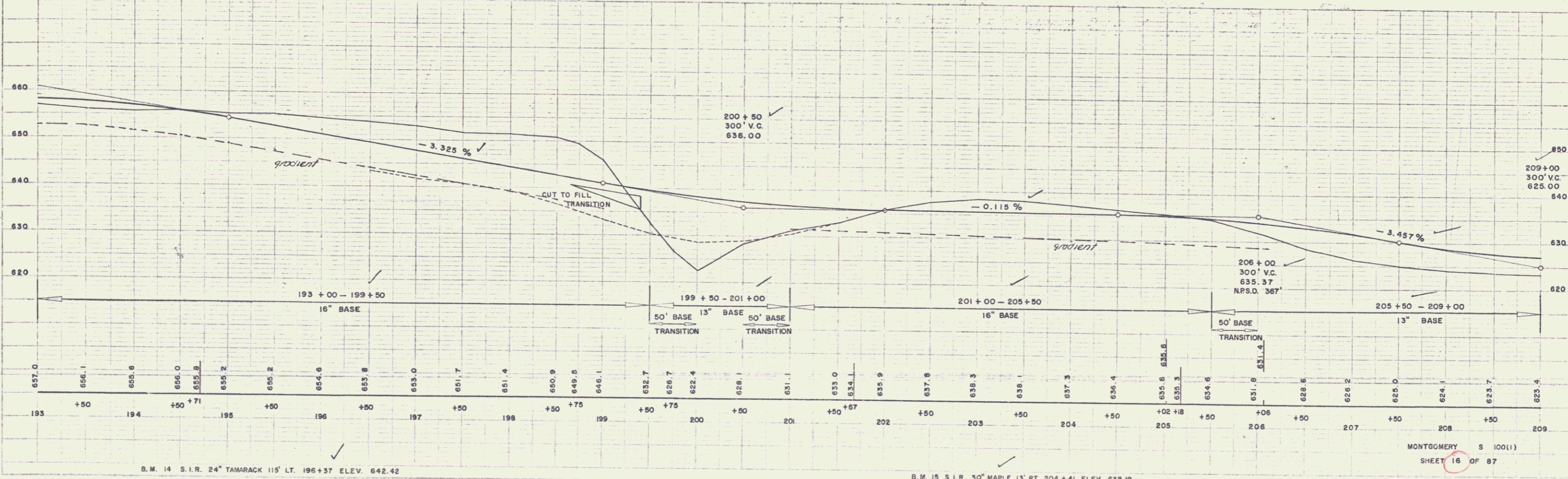
#88 WANDA M. GOWING (A 1 472) STA 179+48 - 194+76± RT W.D.E. 3/5/56 RECORDED MONTGOMERY-BK27-PG 358/359-11/1/56

#10A DELBERT D. HOWARD & WINNIE V. HOWARD (A 1 454±) STA 194+66 - 203+98± RT #10B SLOPE RIGHTS - STA 204+50 - 205+32± LT W.D. 9/11/56 RECORDED MONTGOMERY-BK29-PG 73-5/14/57

#11 LOUIS D. & NAIDA M. BROUILLETTE SLOPE RIGHTS - STA 205+32 - 211+00± LT W.D.E. 9/17/56 RECORDED MONTGOMERY-BK27-PG 351-11/1/56 UNDERDRAIN RIGHTS - STA 206+50 & 217+50

HOWARD M. & SHIRLEY A. SYLVESTER

LLOYD E. & BEATRICE W. SYLVESTER



B.M. 14 S.I.R. 24" TAMARACK 115' LT. 196+37 ELEV. 642.42

B.M. 15 S.I.R. 30" MAPLE 13' RT. 204+41 ELEV. 638.19

MONTGOMERY S 100(1)

SHEET 16 OF 87



BETTY M. KENNETH HOWARD & RAYMOND E. HOWARD

Two Cable Guard Rail  
LI  
230+50-241+00  
230+51-238+16  
234+13-241+00

Wood Guide Posts  
LI  
226+83-227+50  
227+50-228+16  
228+16-229+83  
229+83-230+50  
230+50-231+17  
231+17-231+84  
231+84-232+51  
232+51-233+18  
233+18-233+85  
233+85-234+52  
234+52-235+19  
235+19-235+86  
235+86-236+53  
236+53-237+20  
237+20-237+87  
237+87-238+54  
238+54-239+21  
239+21-239+88  
239+88-240+55  
240+55-241+22

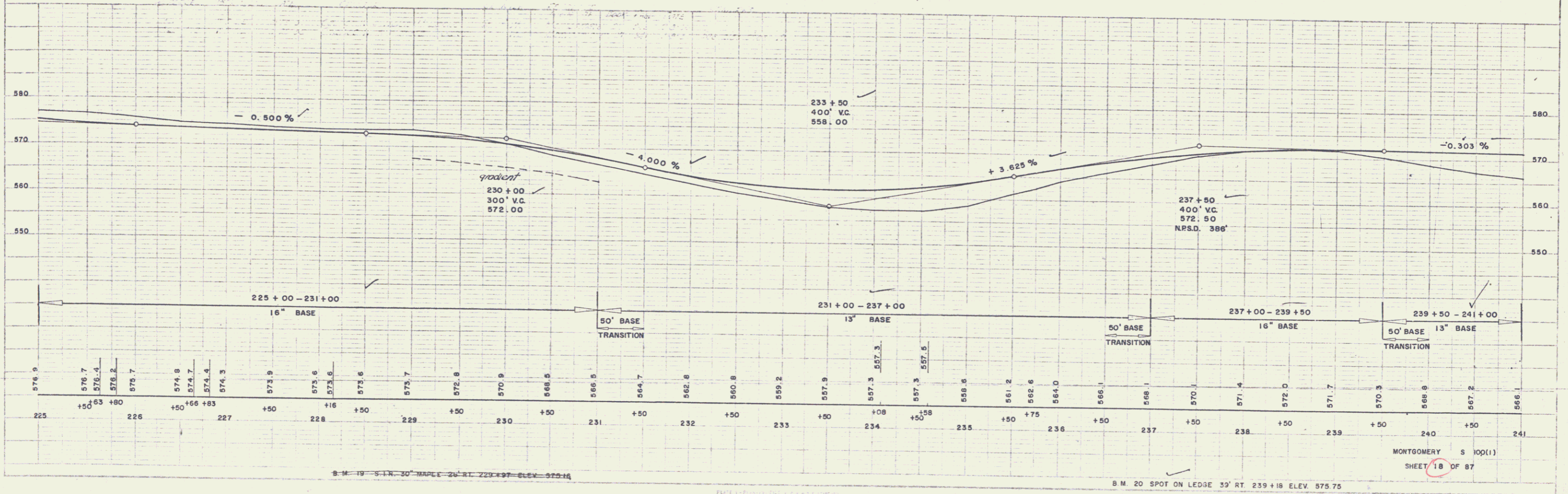
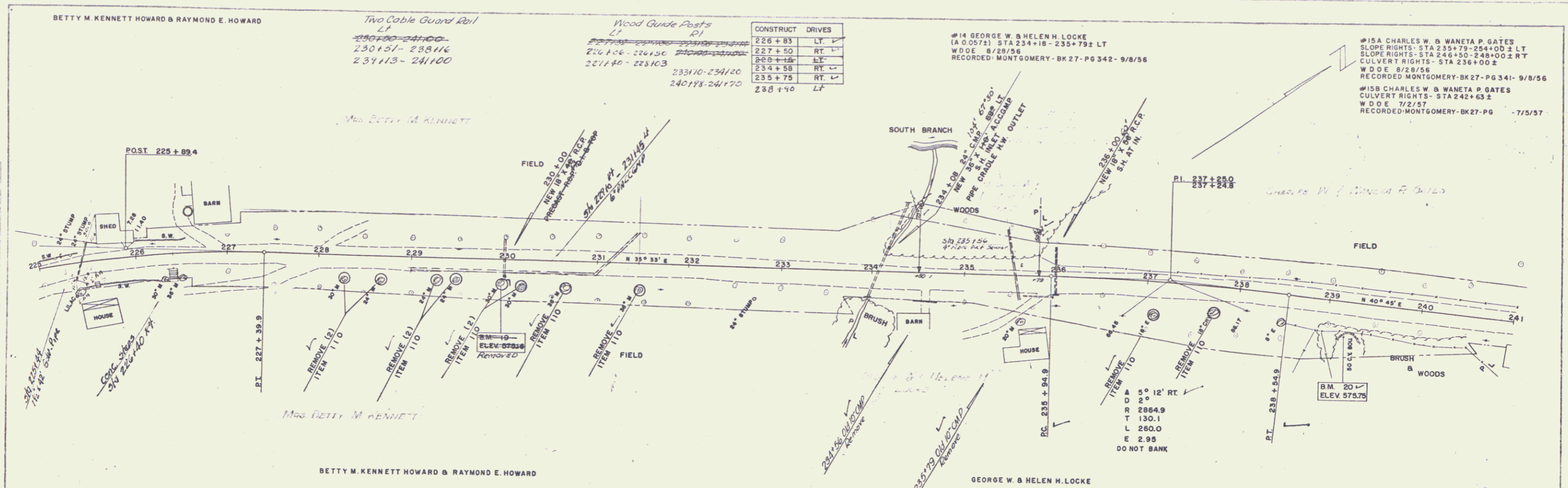
CONSTRUCT	DRIVES
226+83	LT
227+50	RT
228+16	LT
234+58	RT
235+75	RT
238+40	LT

#14 GEORGE W. & HELEN H. LOCKE  
(A 0 0371) STA 234+18 - 235+79 ± LT  
W.D.O.E. 8/28/56  
RECORDED: MONTGOMERY-BK 27-PG 342-9/8/56

#15A CHARLES W. & WANETA P. GATES  
SLOPE RIGHTS- STA 235+79-254+00 ± LT  
SLOPE RIGHTS- STA 246+50-248+00 ± RT  
CULVERT RIGHTS- STA 236+00 ±  
W.D.O.E. 8/28/56  
RECORDED: MONTGOMERY-BK 27-PG 341-9/8/56  
#15B CHARLES W. & WANETA P. GATES  
CULVERT RIGHTS- STA 242+63 ±  
W.D.O.E. 7/2/57  
RECORDED: MONTGOMERY-BK 27-PG 7/5/57

WESTER-MARTIN, INC.  
10-55  
NOTE FROM THE DRAWING SHEET  
DATE: 10-55  
BY: [Signature]

WESTER-MARTIN, INC.  
10-55  
NOTE FROM THE DRAWING SHEET  
DATE: 10-55  
BY: [Signature]

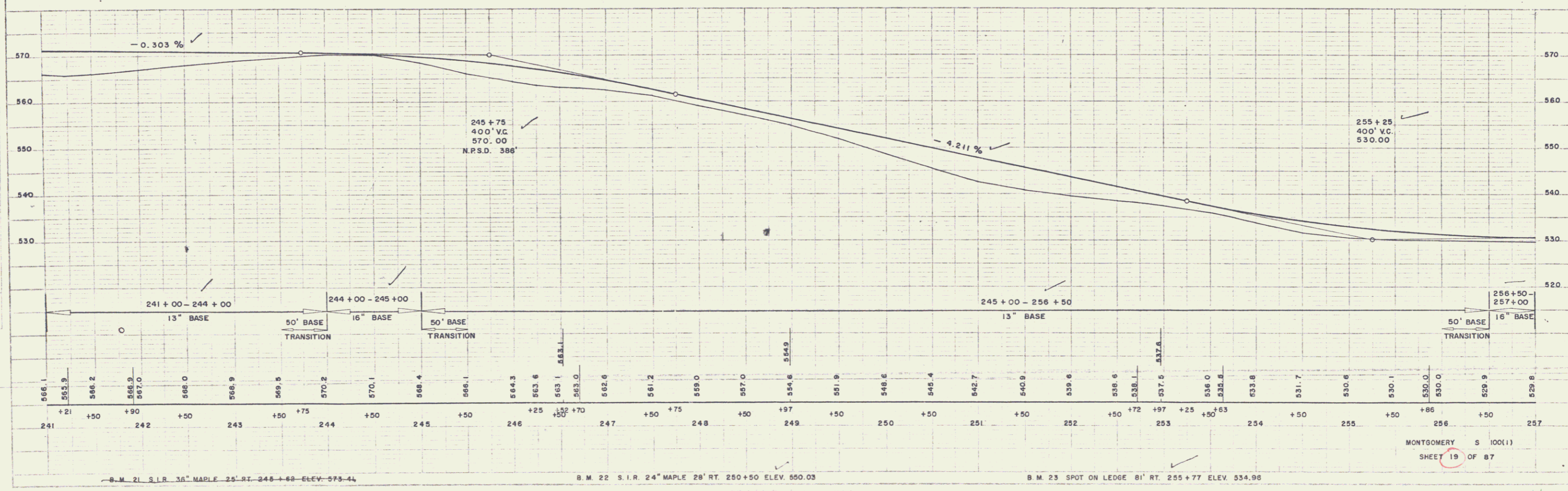
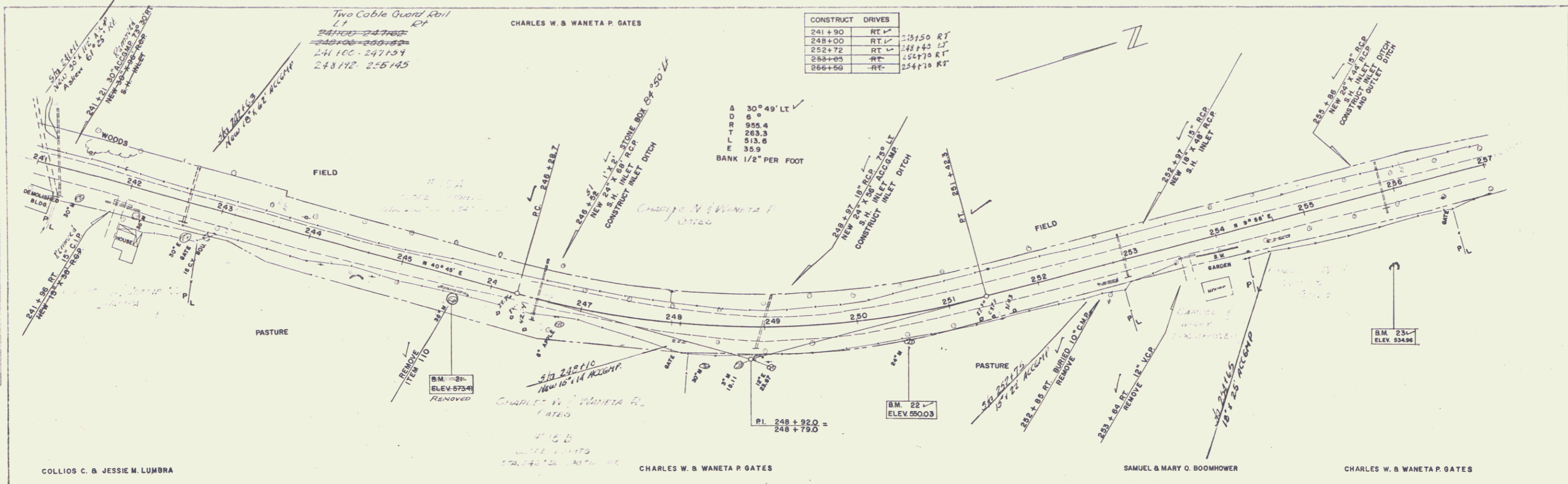


MONTGOMERY S 100(1)  
SHEET 18 OF 87

10

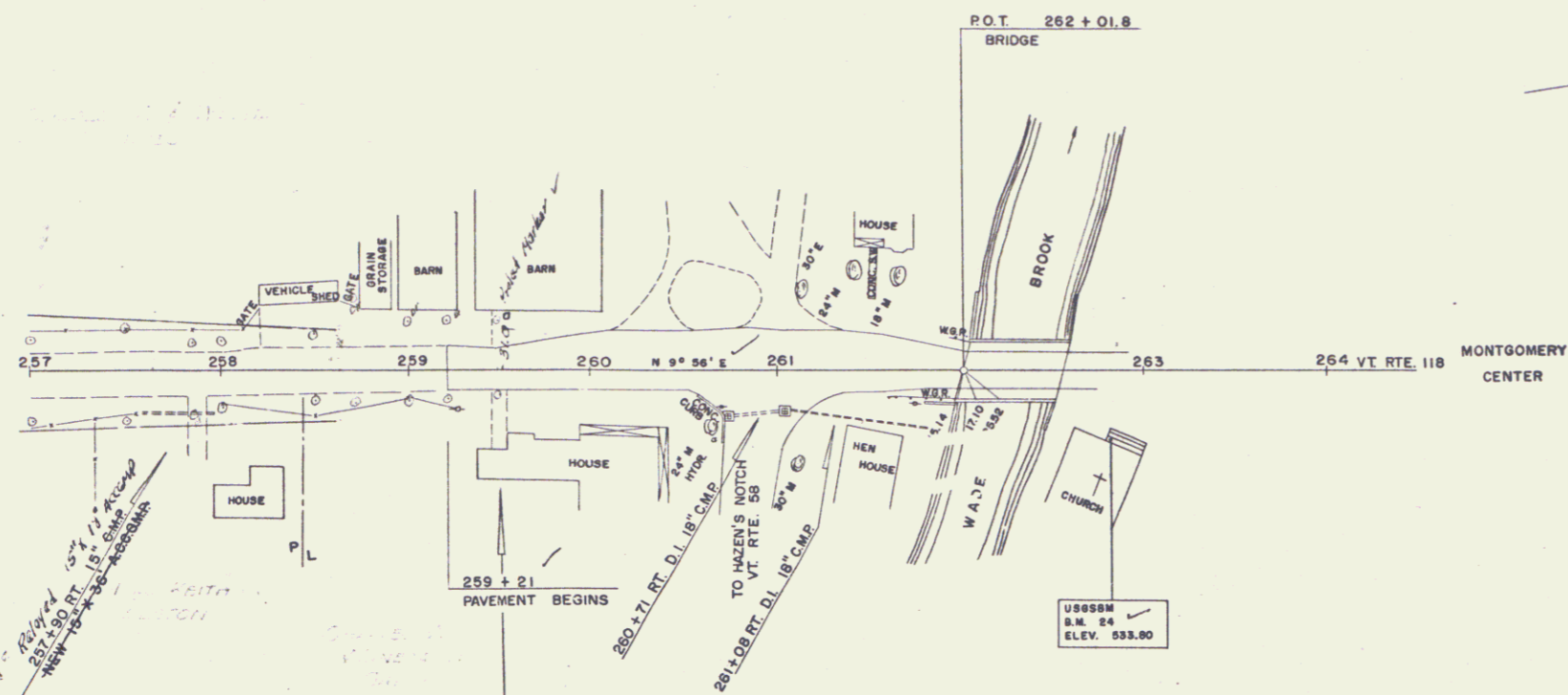
WESTER-MARTIN, INC. 8-85  
 WESTER-MARTIN, INC. 10-82  
 PLAN  
 NOTE: ELEV. IN FEET UNLESS OTHERWISE NOTED.

WESTER-MARTIN, INC. 8-85  
 WESTER-MARTIN, INC. 10-82  
 PROFILE  
 NOTE: ELEV. IN FEET UNLESS OTHERWISE NOTED.



CHARLES W. & WANETA P. GATES

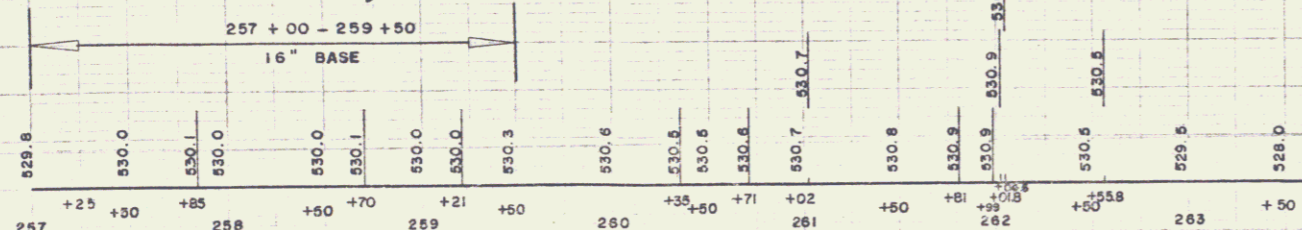
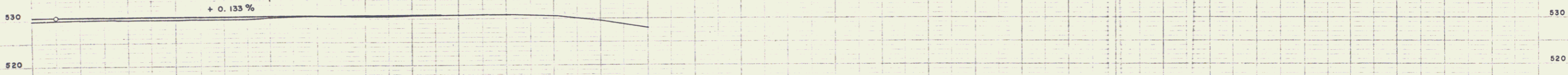
CONSTRUCT DRIVES	
257+85	RT
258+20 - 259+50	LT
259+50	RT



MRS. KEITH ELSTON

CHARLES W. & WANETA P. GATES

259+50  
END PROJECT S 100 (1)  
CONSTRUCT SATISFACTORY APPROACH



B.M. 24 U.S.G.S. BRONZE DISC TOP STEP (CHURCH) 39' RT. OF STA. 262+01 ELEV. 533.80

MONTGOMERY S 100 (1)  
SHEET 20 OF 87

12