

INDEX OF SHEETS	
SHEET NO.	1 TITLE SHEET
	2 TYPICAL CROSS-SECTION OF IMPROVEMENT (1 1/2" BITUMINOUS CONCRETE PAVEMENT, ITEM 341-B)
	3 QUANTITY SHEET (ITEMS)
	4 QUANTITY SHEET (DRAINAGE)
	5-8 EARTHWORK SHEETS
	9-21 PLAN AND PROFILE SHEETS
	22 STANDARD SHEET A-61 (SOLID ROCK SUBGRADE)
	23 STANDARD SHEET B-1 (BANKING TABLES)
	24 STANDARD SHEET B-5 (TYPICAL SLOPE GRADING, TURNOUTS)
	25 STANDARD SHEET B-6 (MUCK EXCAVATION)
	26 STANDARD SHEET B-10 (EMBANKMENT)
	27 STANDARD SHEET D-1 (PRECAST RCP DROP INLET WITH COVER)
	28 STANDARD SHEET D-2 (DRAINAGE)
	29 STANDARD SHEET E-1 (BARRICADES, SIGNS, AND LIGHTS - FOR ROADWAY)
	30 STANDARD SHEET E-2 (BARRICADES, SIGNS, AND LIGHTS - FOR BRIDGES)
	31 STANDARD SHEET G-1 (STEEL BEAM GUARD RAIL WITH STEEL POSTS)
	32 STANDARD SHEET G-2a (TWO CABLE GUARD RAIL)
	33 STANDARD SHEET G-2b (TWO CABLE GUARD RAIL - DEAD END ANCHORAGE)
	34 STANDARD SHEET G-4 (GUIDE POSTS AND MARKER POSTS)
	35 STANDARD SHEET J-1 (PROJECT MARKERS AND BOUNDARY MARKERS)
	36 STANDARD SHEET SCB-30-58 (BRIDGE ROADWAY DETAILS)
	37 STANDARD SHEET SB-20-56 (WP BRIDGE DETAILS)
	38 SUPERSTRUCTURE DETAILS
	39 DETAILS OF ABUTMENTS #1 AND #2
	40 REINFORCING STEEL SCHEDULE
	41-45 CHANNEL CROSS SECTIONS AT STA 605+40
	46 DETAILS OF 12'-6" x 7'-11" x 92'-0" CGMR ARCH AT STA 501+08 (SHEET 1 OF 2)
	47 DETAILS OF 12'-6" x 7'-11" x 92'-0" CGMR ARCH AT STA 501+08 (SHEET 2 OF 2)
	48-116 ROADWAY CROSS SECTIONS
	117-118 CURVE BANKING TRANSITION DIAGRAMS

BENCH MARKS BASED ON U.S.G.S. ELEVATIONS

STATE OF VERMONT DEPARTMENT OF HIGHWAYS Proposed Improvement

TOWNS OF BELVIDERE, AVERY'S GORE AND MONTGOMERY COUNTIES OF LAMOILLE AND FRANKLIN VERMONT ROUTE NO 118

BELVIDERE COR. MONTGOMERY CTR. ROAD

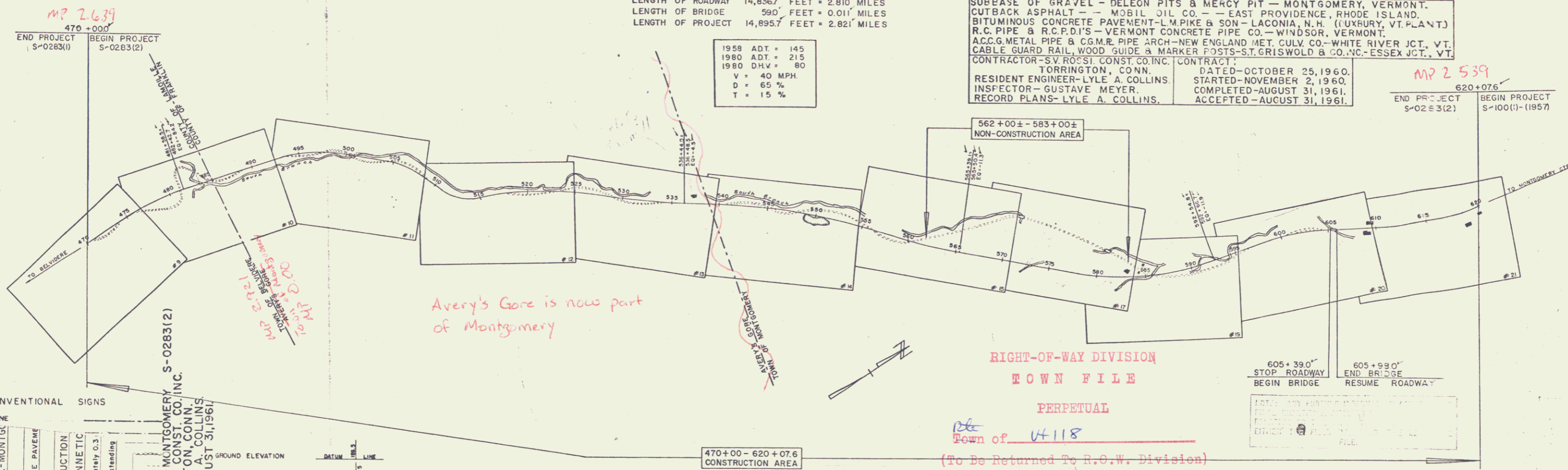
BEGINNING AT A POINT APPROXIMATELY 0.3 MILE SOUTHERLY OF THE BELVIDERE-AVERY'S GORE TOWN LINE AND EXTENDING NORTHEASTERLY 2.821 MILES.

LENGTH OF ROADWAY 14,826.7 FEET + 2.810 MILES
LENGTH OF BRIDGE 590 FEET + 0.011 MILES
LENGTH OF PROJECT 14,895.7 FEET + 2.821 MILES

1958 ADT = 145
1980 ADT = 215
1980 DHV = 80
V = 40 MPH
D = 65 %
T = 15 %

PROJECT NAME & NUMBER	TYPE	PAVEMENT AREA
BELVIDERE-AVERY'S GORE - MONTGOMERY S-0283(2)	1 1/2" BIT. CONC. PAVE.	33,300 S.Y.

RECORD PLANS
MATERIALS
SUBBASE OF GRAVEL - DELEON PITS & MERCY PIT - MONTGOMERY, VERMONT.
CUTBACK ASPHALT - MOBIL OIL CO. - EAST PROVIDENCE, RHODE ISLAND.
BITUMINOUS CONCRETE PAVEMENT - L.M. PIKE & SON - LACONIA, N.H. (LUXURY, VT. PLANT)
R.C. PIPE & R.C.P.D.'S - VERMONT CONCRETE PIPE CO. - WINDSOR, VERMONT.
A.C.C. METAL PIPE & C.G.M.R. PIPE ARCH - NEW ENGLAND MET. CULV. CO. - WHITE RIVER JCT., VT.
CABLE GUARD RAIL, WOOD GUIDE & MARKER POSTS - ST. GRISWOLD & CO., INC. - ESSEX JCT., VT.
CONTRACTOR - S.V. ROSSI CONST. CO., INC. TORRINGTON, CONN. DATED - OCTOBER 25, 1960.
RESIDENT ENGINEER - LYLE A. COLLINS. STARTED - NOVEMBER 2, 1960.
INSPECTOR - GUSTAVE MEYER. COMPLETED - AUGUST 31, 1961.
RECORD PLANS - LYLE A. COLLINS. ACCEPTED - AUGUST 31, 1961.



CONVENTIONAL SIGNS

COUNTY LINE	TOWN FENCE	STONE UNFEN	GUARD	TRAVEL	RAILROAD	RETAINMENT	CENTERS	SURVEY	CULVERT	DROPPED	POWER	TELEPHONE	TREES	HEDGE
PROJECT BELVIDERE-AVERY'S GORE - MONTGOMERY S-0283(2)	TYPE 1 1/2" BITUMINOUS CONCRETE PAVEMENT	CONTRACTOR S. V. ROSSI CONSTRUCTION TORRINGTON, CONNECTICUT	Location beginning at a point approximately 0.3 miles Avery's Gore Town Line and extending	BELVIDERE-AVERY'S GORE - MONTGOMERY S-0283(2)	CONTRACTOR S. V. ROSSI CONST. CO., INC. TORRINGTON, CONN.	RECORD PLANS FOR VERMONT, CONN. CONST. COMPLETED - AUGUST 31, 1961								

GROUND ELEVATION	DATUM	LINE
CURVE DATA		
DEFLECTION OF ANGLE	A	
DEGREE OF CURVE	D	
RADIUS OF CURVE	R	
TANGENT DISTANCE	T	
LENGTH OF CURVE	L	
EXTERNAL DISTANCE	E	
POINT OF INTERSECTION	P.I.	
POINT OF CURVE	P.C.	
POINT OF TANGENT	P.T.	
POINT ON TANGENT	POT	
POINT ON SUB-TANGENT	POST	

SCALES

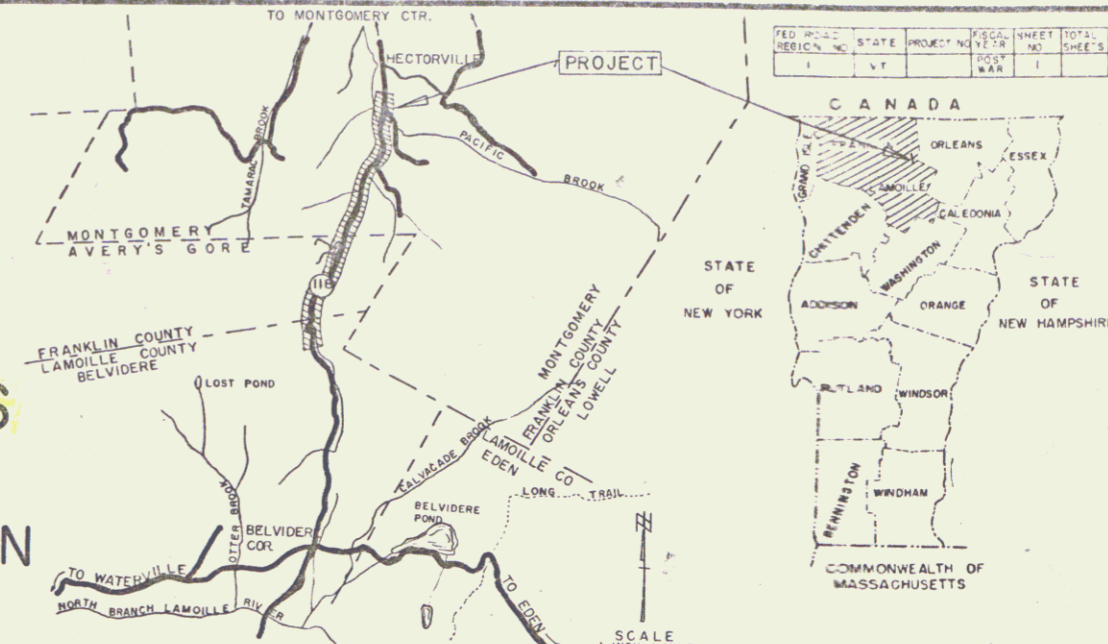
TITLE	1" = 500'
TYPICAL	1" = 2'
PLAN	1" = 50'
PROFILE HORIZONTAL	1" = 50'
PROFILE VERTICAL	1" = 10'
CROSS-SECTIONS	1" = 5'

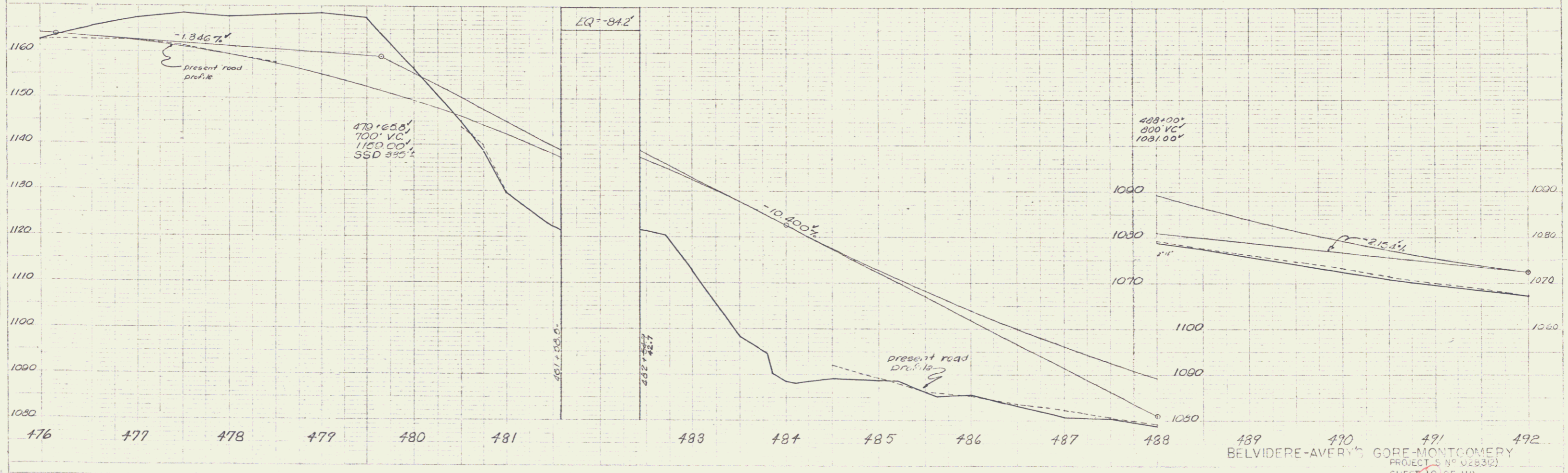
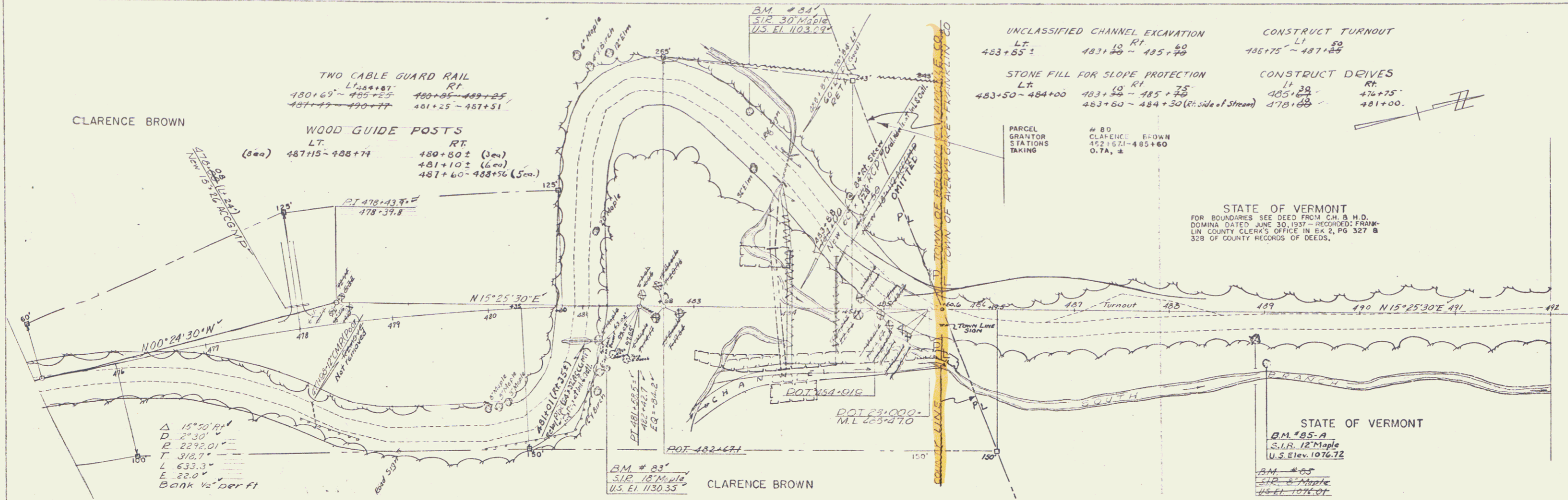
APPROVED <i>[Signature]</i> DISTRICT ENGINEER DATE Sept. 30, 1960	APPROVED <i>[Signature]</i> SECONDARY ENGINEER DATE Nov. 10, 1960	APPROVED <i>[Signature]</i> CONSTRUCTION ENGINEER DATE Nov. 5, 1960	APPROVED <i>[Signature]</i> FIELD ENGINEER DATE Apr. 28, 1960	APPROVED <i>[Signature]</i> DISTRICT ENGINEER DATE Jan. 15, 1960	APPROVED <i>[Signature]</i> HIGHWAY ENGINEER DATE 3/11/60	APPROVED <i>[Signature]</i> DATE Apr. 28, 1960
---	---	---	---	--	---	---

THESE PLANS ARE SUBJECT TO SUCH REVISIONS AS MAY BE REQUIRED BY THE BUREAU OF PUBLIC ROADS OR THE COMMISSIONER OF HIGHWAYS.
CONSTRUCTION IS TO BE CARRIED ON IN ACCORDANCE WITH THE PLANS AND THE STANDARD SPECIFICATIONS FOR HIGHWAY AND BRIDGE CONSTRUCTION OF JANUARY 1956 SUBMITTED TO THE BUREAU OF PUBLIC ROADS AS APPROVED JULY 2, 1956, INCLUDING ALL SUBSEQUENT APPROVED REVISIONS AND SUCH REVISED SPECIFICATIONS AND SPECIAL PROVISIONS AS ARE SUBMITTED WITH THE PLANS.

DEPARTMENT OF COMMERCE
BUREAU OF PUBLIC ROADS

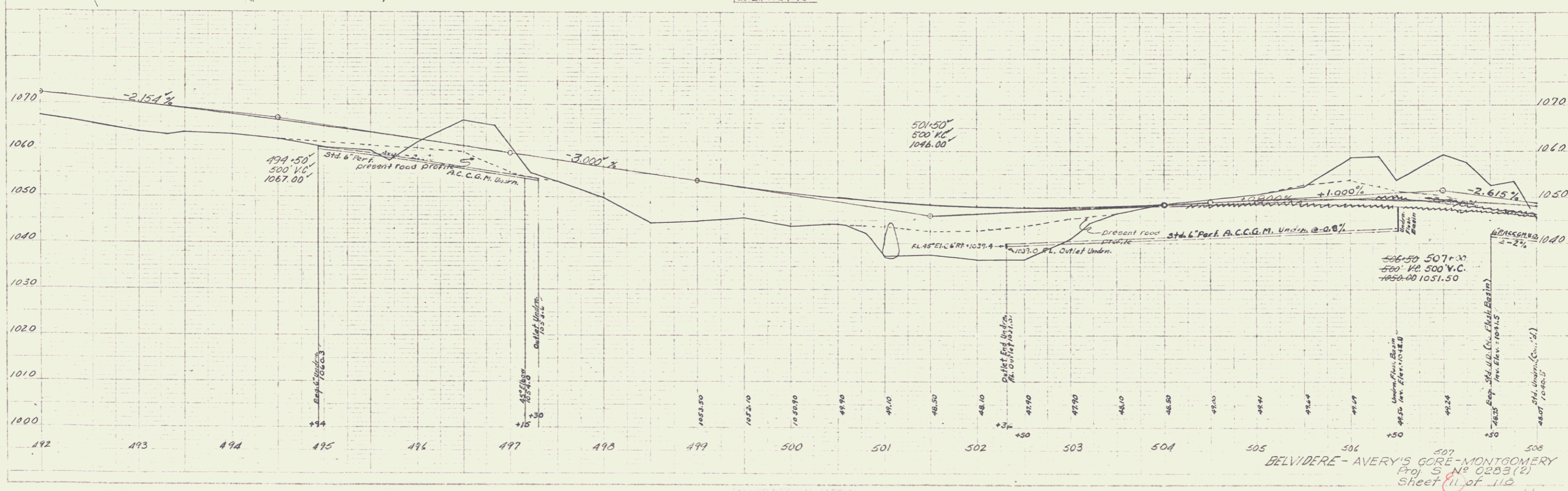
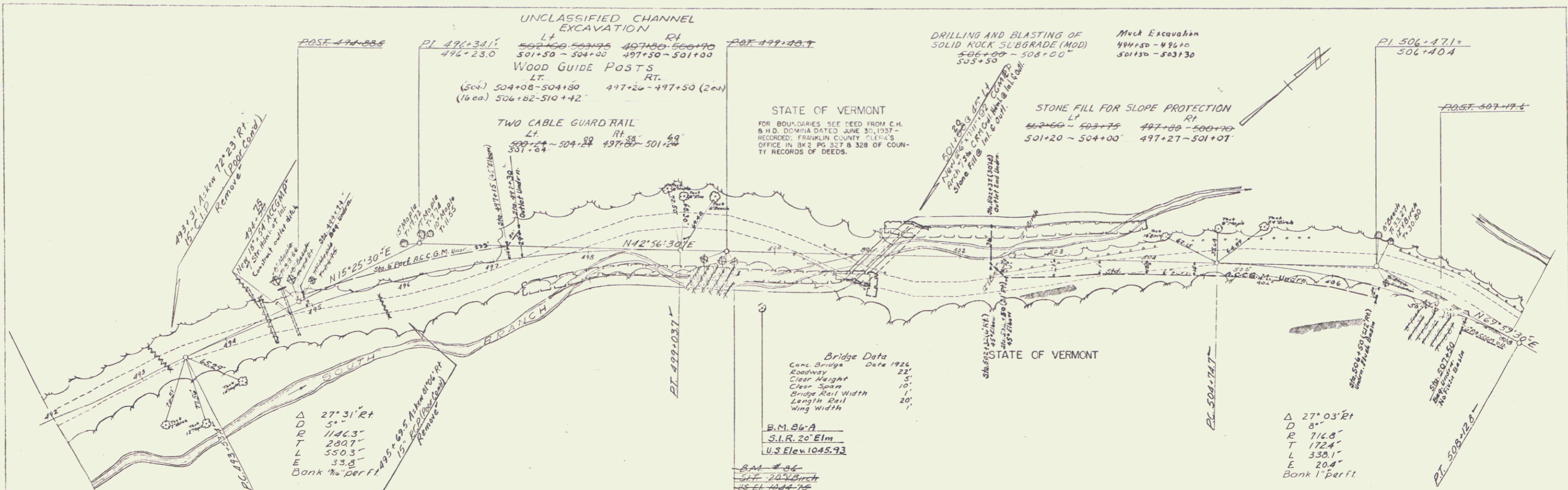
APPROVED	ENGINEER	DATE
PROJECT S-0283(2)	NO. 0283(2)	
SHEET 1	OF	SHEETS 118





BELVIDERE-AVERY'S GORE-MONTGOMERY
 PROJECT 5 N° 0283(2)
 SHEET 10 OF 118

W. H. WEAVER, 1/25
 1/1/59
 M. General 2/1/59



BELVIDERE - AVERY'S GORE - MONTGOMERY
 Proj 5 No 0203 (2)
 Sheet 11 of 110
 4

CONSTRUCT TURNOUT
 LT. 27+50
 524+20 ~ 527+25

DRILLING AND BLASTING OF
 SOLID ROCK SUBGRADE (MOD)
 LT. 28+00 ~ 527+25

UNCLASSIFIED CHANNEL EXCAVATION
 LT. 528+90 ~ 530+35

Muck Excavation
 524+30 ~ 528+30
 531+20 ~ 532+30

CONSTRUCT DRIVE
 LT. 537+00
 536+70

PARCEL
 GRANTOR:
 STATIONS:
 TAKING:
 REMAINDER:
 RIGHTS:
 TITLE TAKEN
 RECORDED

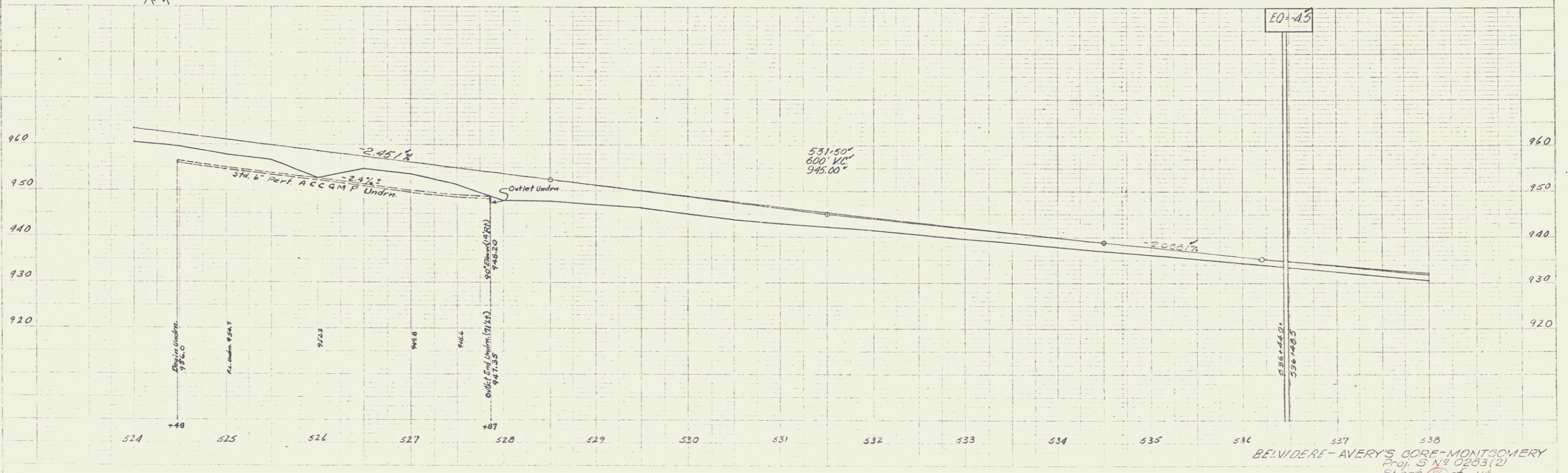
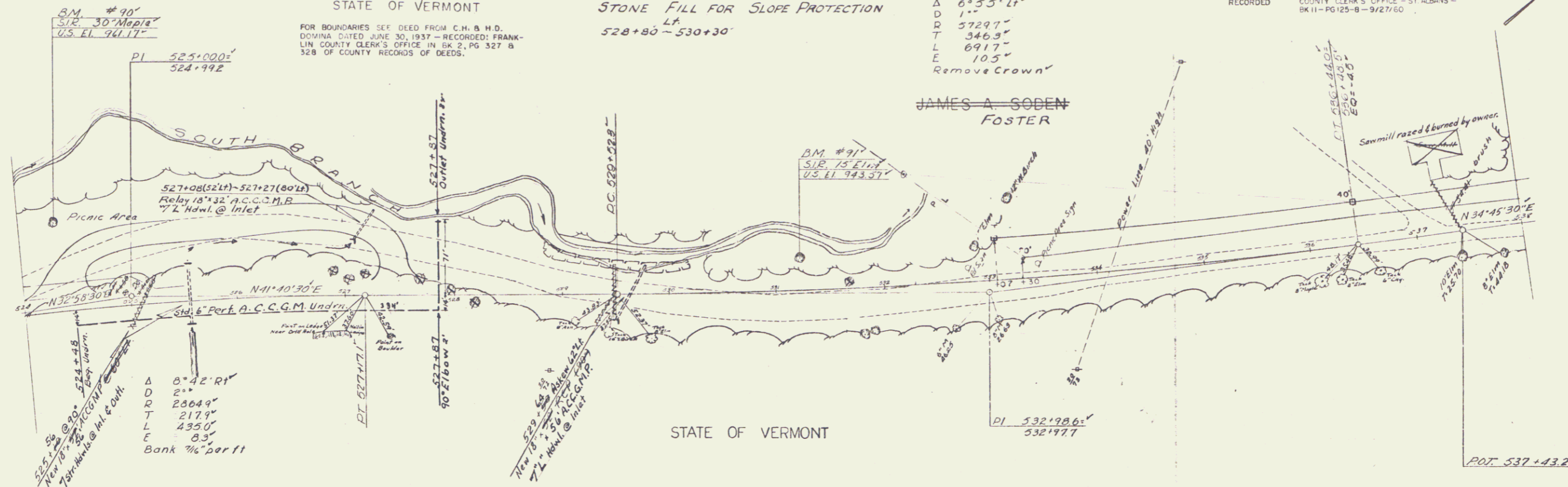
JAMES A. SODEN
 533+01 ~ 538+93
 D. 2 A 5
 310 A 5
 HOME
 COND. CLERK'S OFFICE - ST ALBANS -
 BK 11 - PG 125-8 - 9/27/60

STATE OF VERMONT

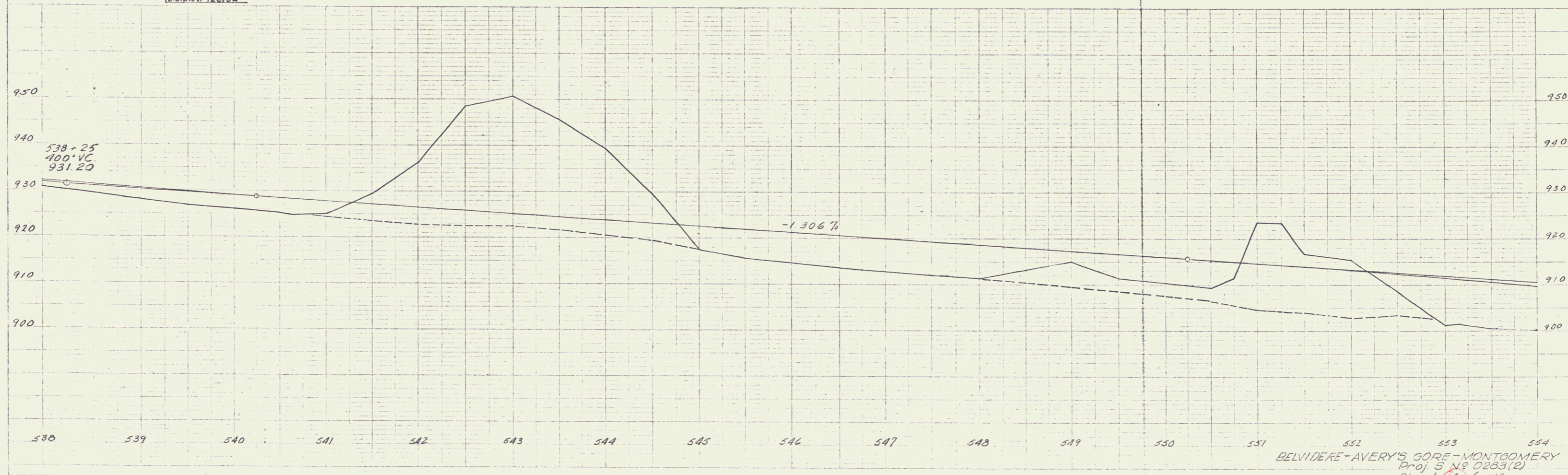
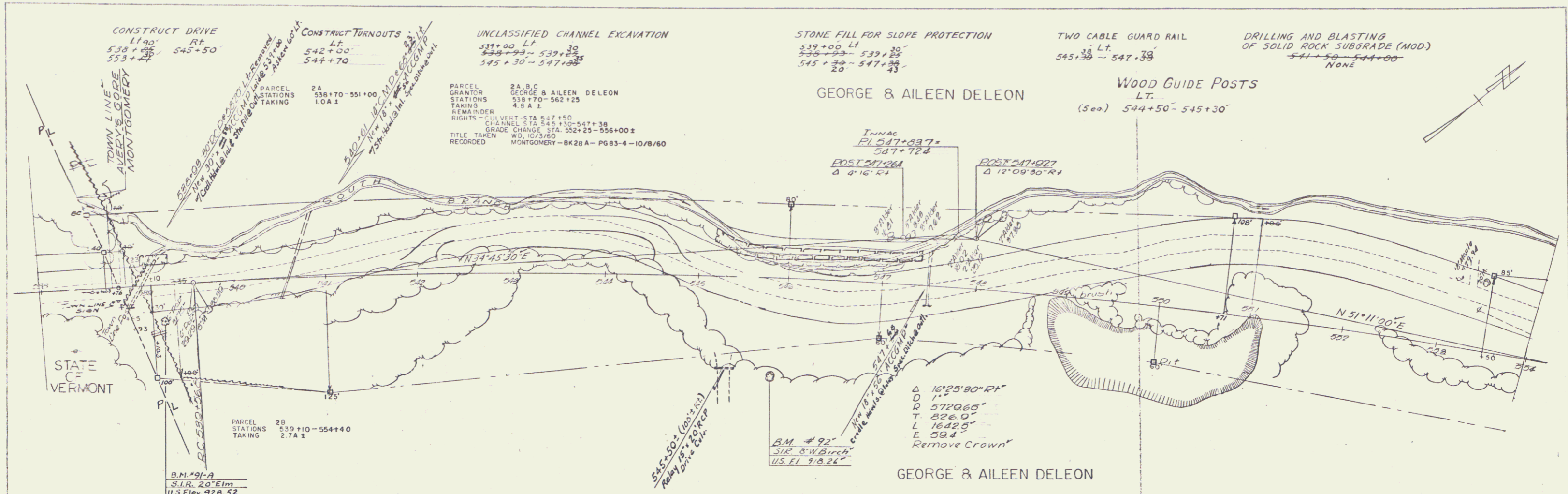
STONE FILL FOR SLOPE PROTECTION
 LT. 528+80 ~ 530+30

Δ 6°55' 11"
 D 1"
 R 57297"
 T 3465"
 L 6917"
 E 105"
 Remove Crown

FOR BOUNDARIES SEE DEED FROM C.H. & M.D.
 DOMINA DATED JUNE 30, 1937 - RECORDED: FRANK-
 LIN COUNTY CLERK'S OFFICE IN BK. 2, PG. 327 B
 528 OF COUNTY RECORDS OF DEEDS.



BELVIDERE - AVERY'S GORE - MONTGOMERY
 Proj. S N 9 0283(2)
 Sheet 12 of 110



TREATED TIMBER CURB
Lt.
558+75 ~ 564+70

CONSTRUCT DRIVES
Rt.
554+08'
564+30'

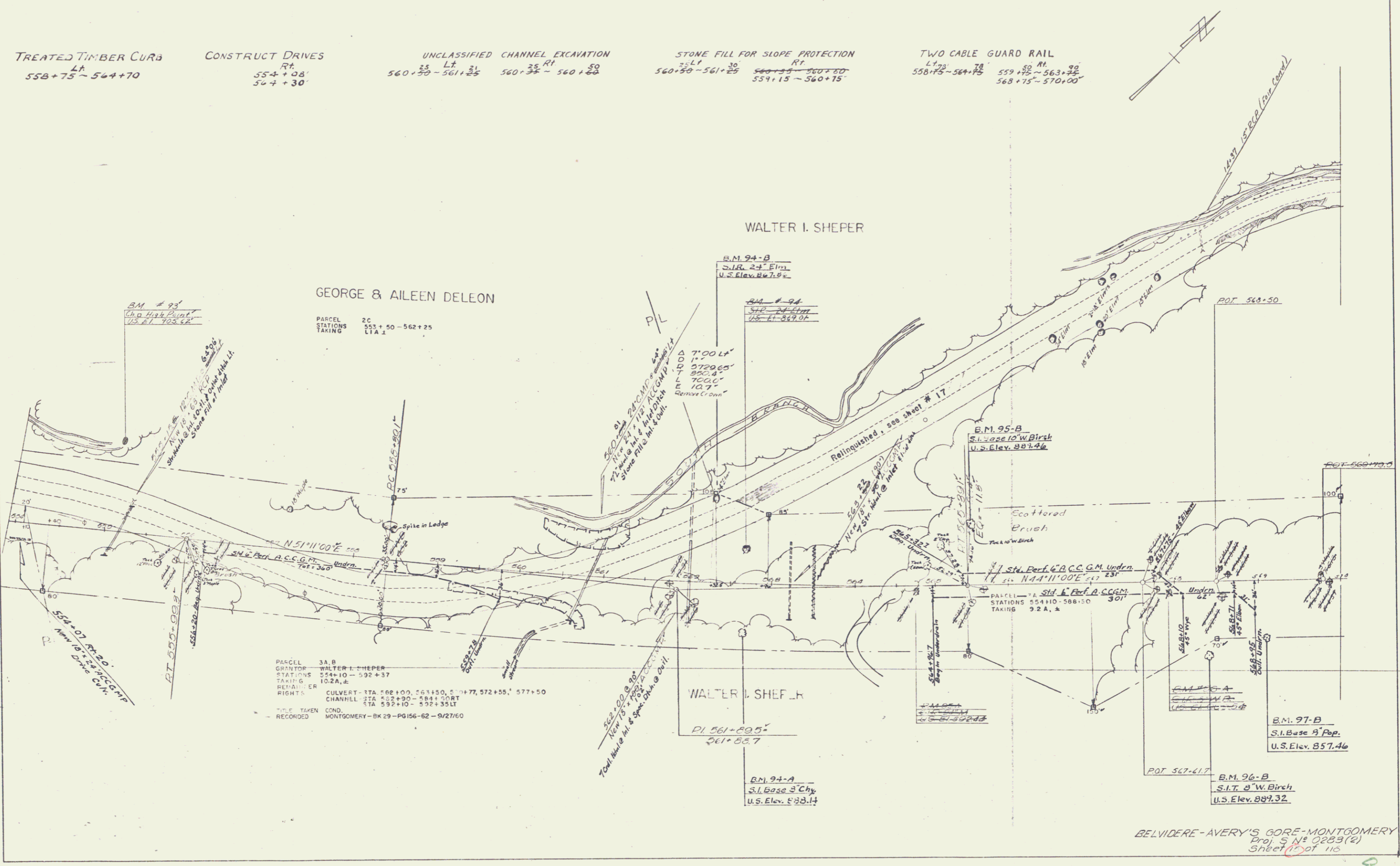
UNCLASSIFIED CHANNEL EXCAVATION
Lt. Rt.
560+50 ~ 561+25 560+35 ~ 560+60

STONE FILL FOR SLOPE PROTECTION
Lt. Rt.
560+50 ~ 561+25 560+35 ~ 560+60
559+15 ~ 560+15

TWO CABLE GUARD RAIL
Lt. Rt.
558+75 ~ 564+70 559+75 ~ 563+75
568+75 ~ 570+00

Scale	1" = 40'
North Arrow	True North
Projection	Universal Transverse Mercator
Zone	18N
Grid	1983

Scale	1" = 40'
North Arrow	True North
Projection	Universal Transverse Mercator
Zone	18N
Grid	1983



GEORGE & AILEEN DELEON

PARCEL 2C
STATIONS 555+50 - 562+25
TAKING LTA 1

WALTER I. SHEPER

B.M. 94-B
S.I. Base 24 Elm.
U.S. Elev. 867.92

B.M. 94-A
S.I. Base 24 Elm.
U.S. Elev. 867.04

B.M. 95-B
S.I. Base 10 W. Birch
U.S. Elev. 887.26

B.M. 97-B
S.I. Base 8 Pop.
U.S. Elev. 857.46

B.M. 96-B
S.I. Base 8 W. Birch
U.S. Elev. 887.32

PARCEL 3A, B
GRANTOR WALTER I. SHEPER
STATIONS 554+10 - 592+37
TAKING 10.2A, 2
REVI. ER
RIGHTS
CULVERT STA 562+00, 563+50, 577+55, 577+50
CHANNEL STA 552+00 - 584+00 RT
STA 592+00 - 592+35 LT
P.C. TAKEN COND. MONTGOMERY - BK 29 - PG 156 - 62 - 9/27/60
RECORDED

WALTER I. SHEPER

P.I. 561+09.5
561+08.7

B.M. 94-A
S.I. Base 8 Chy.
U.S. Elev. 888.14

BELVIDERE - AVERY'S GORE - MONTGOMERY
Proj. S N° 0283 (2)
Sheet 10 of 110

CONSTRUCT DRIVE
 573+00
 574+00

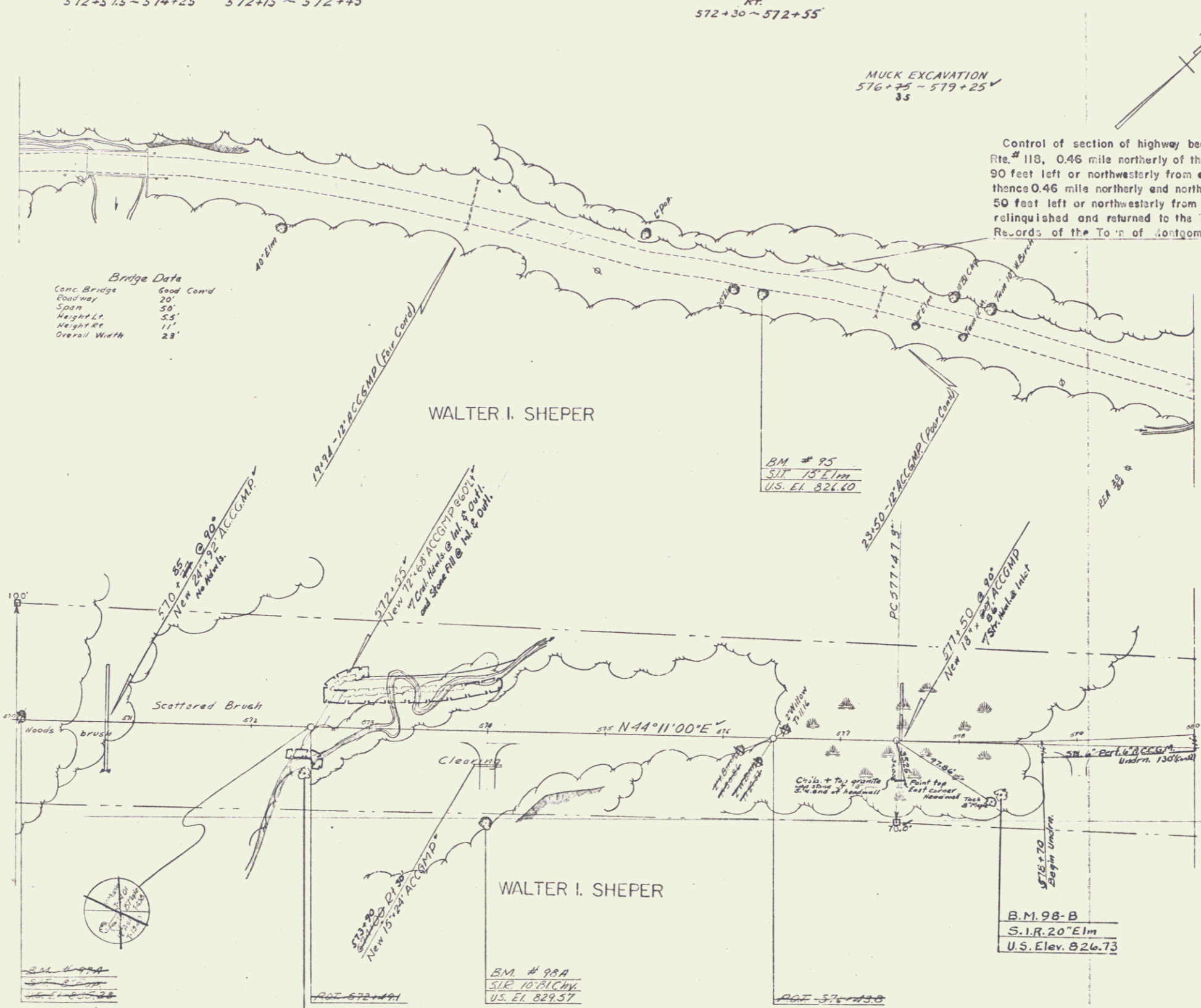
UNCLASSIFIED CHANNEL EXCAVATION
 Lt. 572+00 ~ 574+25
 Rt. 572+15 ~ 572+45

STONE FILL FOR SLOPE PROTECTION
 Lt. 572+40 ~ 574+12
 Rt. 572+40 ~ 574+25 (Lt. of Stream)
 572+30 ~ 572+55

TWO CABLE GUARD RAIL
 Lt. 570+32 ~ 573+28
 Rt. 570+00 ~ 573+23

DRILLING & BLASTING OF SOLID ROCK SUBGRADE (MOD.)
 579+00 ~ 580+00

MUCK EXCAVATION
 576+25 ~ 579+25



Bridge Data

Conc. Bridge	Good Cond.
Clearway	20'
Span	28'
Height	3.5'
Height	11'
Overall Width	28'

Control of section of highway beginning at a point in the center line of former State Highway, Vt. Rte. # 118, 0.46 mile northerly of the line between the Town of Montgomery and Avery's Gore and 90 feet left or northwesterly from approximate survey sta. 562+55 of Highway Project S 0283(2); thence 0.46 mile northerly and northeasterly along the center line of said former highway to a point 50 feet left or northwesterly from approximate survey sta. 584+85 of said Highway Project, is hereby relinquished and returned to the Town of Montgomery, and recorded in Book 29, Page 187 of Land Records of the Town of Montgomery, September 28, 1961.

WALTER I. SHEPER

WALTER I. SHEPER

B.M. # 97-A
 S.I.R. 12" Elm
 U.S. Elev. 833.96

B.M. # 98A
 S.I.R. 10" Birch
 U.S. El. 829.57

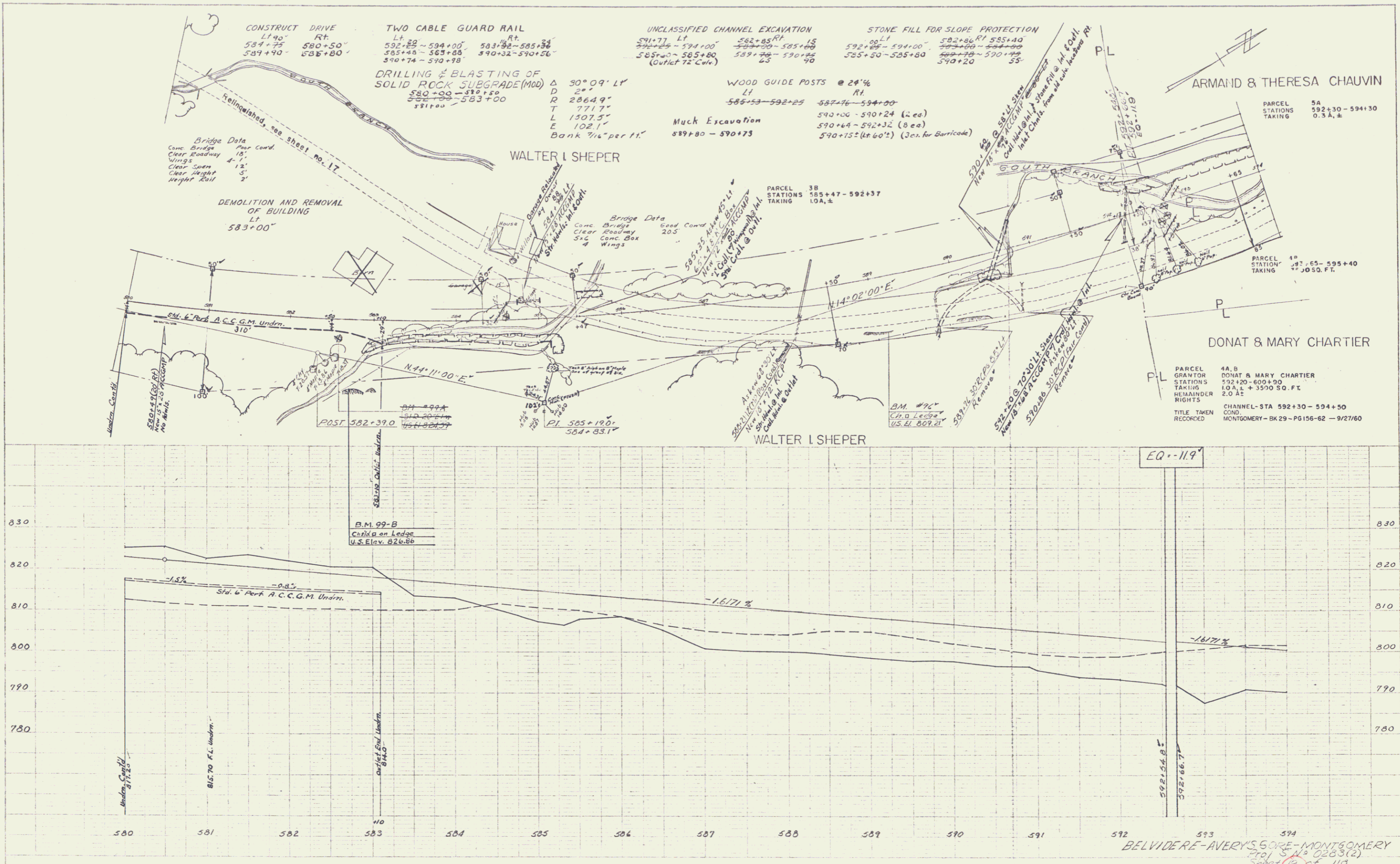
B.M. # 95
 S.I.R. 13" Elm
 U.S. El. 826.60

B.M. # 98-B
 S.I.R. 20" Elm
 U.S. Elev. 826.73

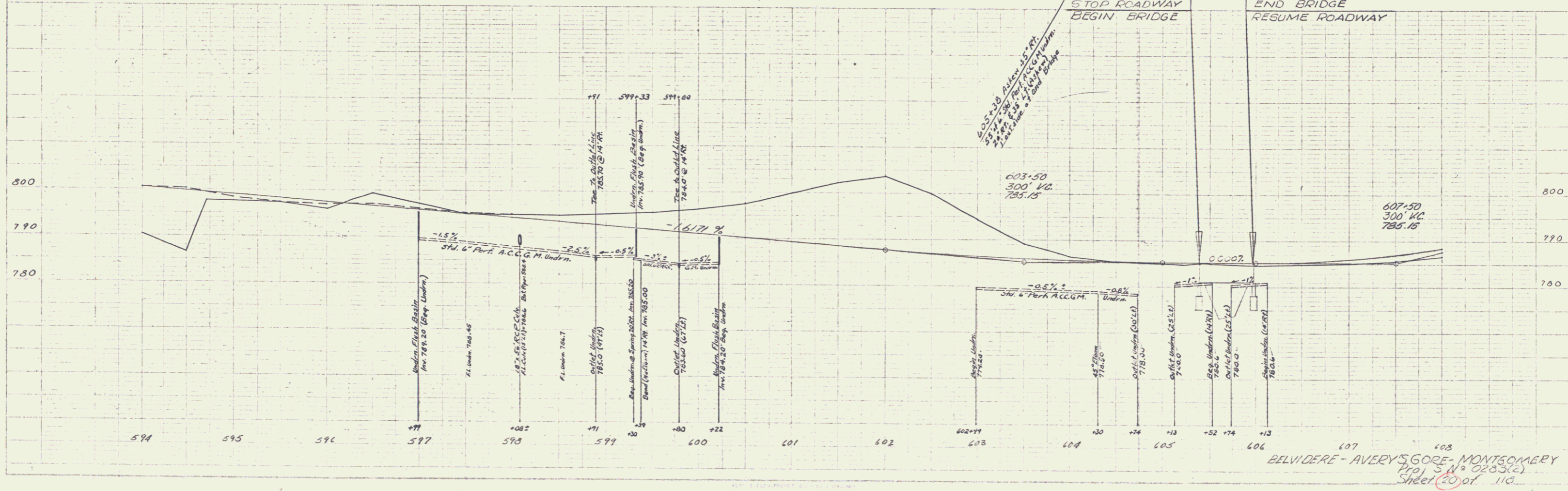
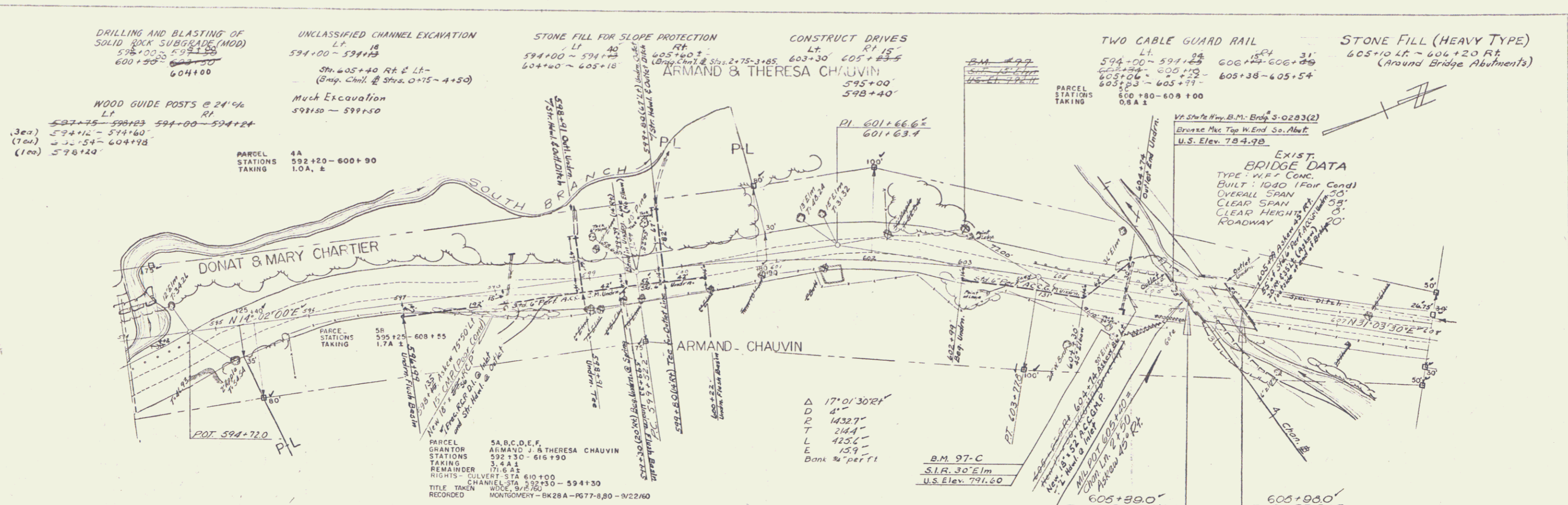
BELVIDERE-AVERY'S GORE-MONTGOMERY
 Proj. S. No. 0283(2)
 Sheet 17 of 113

PLAN
 1/4" = 100'
 1/8" = 200'
 1/16" = 400'

WALTER I. SHEPER
 1/8" = 200'



BELVIDERE-AVERY'S GORE - MONTGOMERY
 2nd S. N. 0283(2)
 Sheet 18 of 118



BELVIDERE - AVERY'S GORE - MONTGOMERY
 (2) S.N. 0283(2)
 Sheet 20 of 110

