

INDEX OF SHEETS

SHEET NO. 1	TITLE PAGE
2	TYPICAL CROSS-SECTION OF IMPROVEMENT DOUBLE TRACK GRAY OF REFINED TAR WITH SAID-GRAVEL SEAL, ITEM 311.2
3	BANKING AND WIDENING TABLES
4	QUANTITY SHEET, ITEMS
5	QUANTITY SHEET, DRAINAGE
6-7	EARTHWORK SHEETS
8-12	PLAN AND PROFILE
13	STANDARD STRUCTURE SHEET S 40 BARRICADES, SIGNS AND LIGHTS
14	" " " S 41 TYPICAL GRADINGS - CROSS SECTIONS
15	" " " S 46-45 PROJECT MARKERS
16	" " " S 47-45 PIPE GULVERTS
17	" " " S 48-46 WOOD GUIDE POSTS
18-26	CROSS SECTIONS

STANDARD STRUCTURE SHEETS APPROVED BY THE CHIEF ENGINEER, VERMONT STATE DEPARTMENT OF HIGHWAYS

S 40 FEB. 28, 1949
 S 46-45 FEB. 28, 1949
 S 47-45 FEB. 28, 1949
 S 48-46 MAY 13, 1946

STATE OF VERMONT
 STATE HIGHWAY DEPARTMENT

PLAN AND PROFILE OF PROPOSED
 STATE HIGHWAY

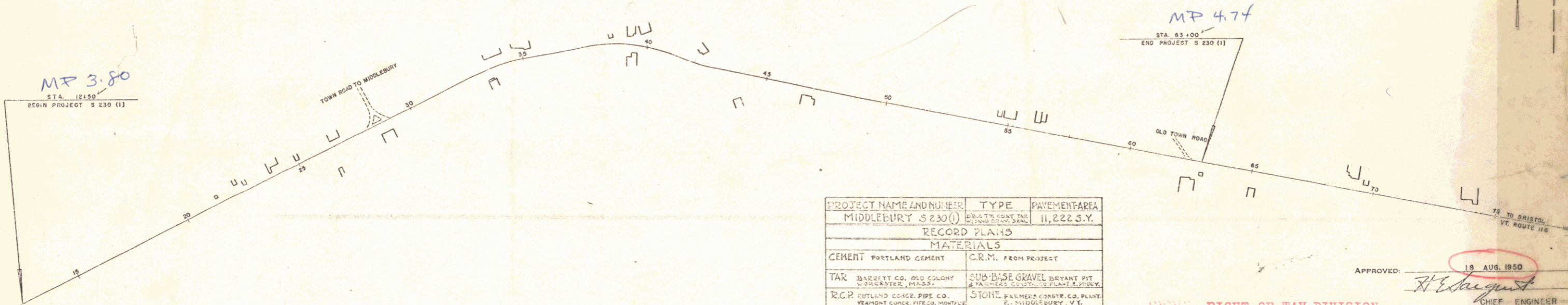
TOWN OF MIDDLEBURY - 6 rods
 COUNTY OF ADDISON
 VERMONT ROUTE 116
 MIDDLEBURY-BRISTOL ROAD

BEGINNING AT A POINT APPROXIMATELY 17,424 FEET NORTHERLY OF THE INTERSECTION OF VERMONT ROUTES 125 AND 116 AND EXTENDING NORTHERLY 5,050 FEET.
 LENGTH OF PROJECT 5,050 FEET = 0.956 MILE

PROJ. NO.	STATE	PROJ. NO.	TOTAL SHEETS	TOTAL SHEETS
1	Vt.	S 230(1)	26	26



Middlebury 116



PROJECT NAME AND NUMBER	MIDDLEBURY S 230(1)	TYPE	RECORD PLANS	PAVEMENT AREA	11,222 S.Y.
MATERIALS					
CEMENT	PORTLAND CEMENT	C.R.M.	FROM PROJECT		
TAR	BARRETT CO. OLD COLONY WORCESTER, MASS.	SUB-BASE GRAVEL	BEVANT PIT & PAULHAS CONSTRUCTION PLANT, MIDDLEBURY, VT.		
R.C.P.	RUTLAND CORR. PIPE CO. VERMONT CORP. RUTLAND, VERMONT	STONE	FARMERS CONST. CO. PLANT MIDDLEBURY, VT.		
A.C.C.M.P.	NEW ENGLAND MET. BOSTON, MASS.	SAND	FARMERS CONST. CO. PLANT MIDDLEBURY, VT.		
REINF. STEEL	VERMONT STRUCTURAL STEEL, DURLINGTON				
CONTRACTOR	BLOW & COTE CONST. CO.	CONTRACT DATED	DECE. 10, 1950.		
RESIDENT ENG'G.	CLAYTON POSTER	CONTRACT STARTED	DECE. 11, 1950.		
INSPECTOR		CONTRACT COMPLETED	JULY 30, 51.		
RECORD PLANS BY	SARGENT & LINTON	CONTRACT ACCEPTED	AUG. 9, 1951.		

APPROVED: 18 AUG. 1950
 H. W. Mearns
 CHIEF ENGINEER
 SUBMITTED BY ORDER OF THE STATE HIGHWAY BOARD

RIGHT-OF-WAY DIVISION
 TOWN FILE
 PERPETUAL
 Town of Middlebury
 (To Be Returned To R.O.W. Division)

GROUND ELEVATION	DATUM	LINE
GRADE ELEVATION	DATUM	LINE

VERMONT - VERMONT ROUTE 116
 CONSTRUCTION BELOW & COTE
 CONSTRUCTION COMPLETED JULY 30 1951

CURVE DATA	
DEFLECTION ANGLE	Δ
DEGREE OF CURVE	D
RADIUS OF CURVE	R
TANGENT DISTANCE	T
LENGTH OF CURVE	L
EXTERNAL DISTANCE	E
POINT OF INTERSECTION	P. I.
POINT OF CURVE	P. C.
POINT OF TANGENT	P. T.
POINT ON TANGENT	P. O. T.

SCALES	
TITLE	1" = 600'
TYPICAL	1" = 20'
PLAN	1" = 50'
PROFILE HORIZONTAL	1" = 50'
PROFILE VERTICAL	1" = 10'
CROSS SECTIONS	1" = 5'-10"

Project: S 230(1)
 Pin: 00R505

THESE PLANS ARE SUBJECT TO SUCH REVISIONS AS MAY BE REQUIRED BY THE BUREAU OF PUBLIC ROADS OR THE COMMISSIONER OF HIGHWAYS.

CONSTRUCTION IS TO BE CARRIED ON IN ACCORDANCE WITH THE PLANS AND THE STANDARD ROAD AND BRIDGE SPECIFICATIONS OF 1948, AS APPROVED JULY 25, 1949 BY THE BUREAU OF PUBLIC ROADS INCLUDING ALL SUBSEQUENT APPROVED REVISIONS AND SUCH REVISED SPECIFICATIONS AND SPECIAL PROVISIONS AS ARE SUBMITTED WITH THE PLANS.

DEPARTMENT OF COMMERCE BUREAU OF PUBLIC ROADS	RECOMMENDED FOR APPROVAL
DISTRICT ENGINEER	DATE
APPROVED	
DIVISION ENGINEER	DATE

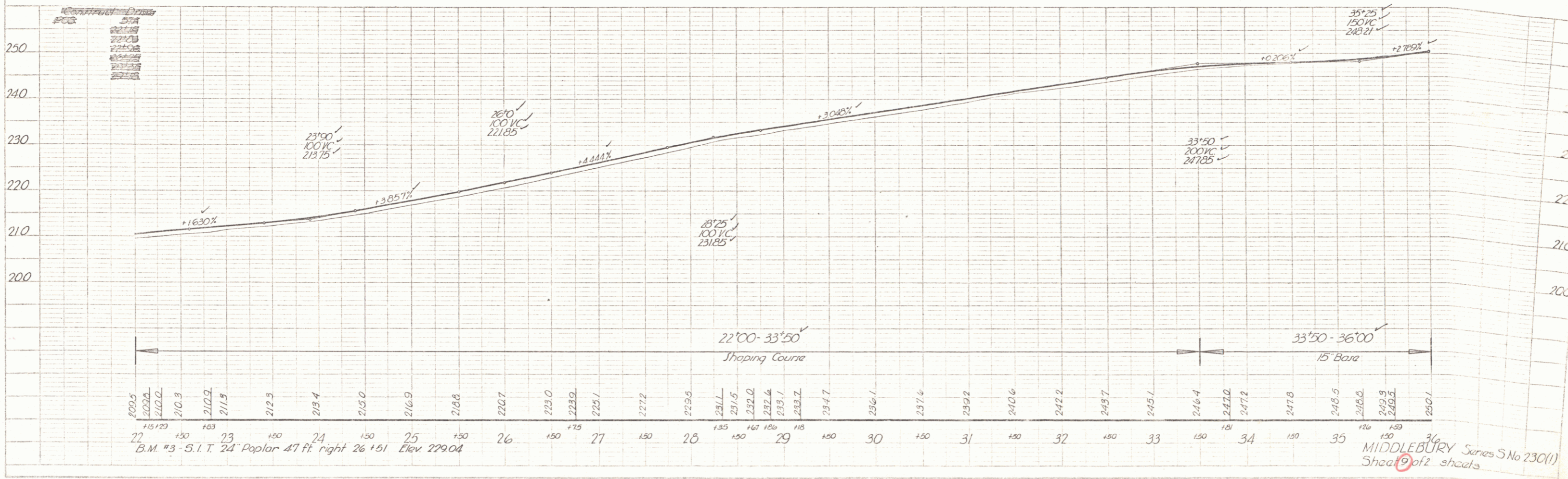
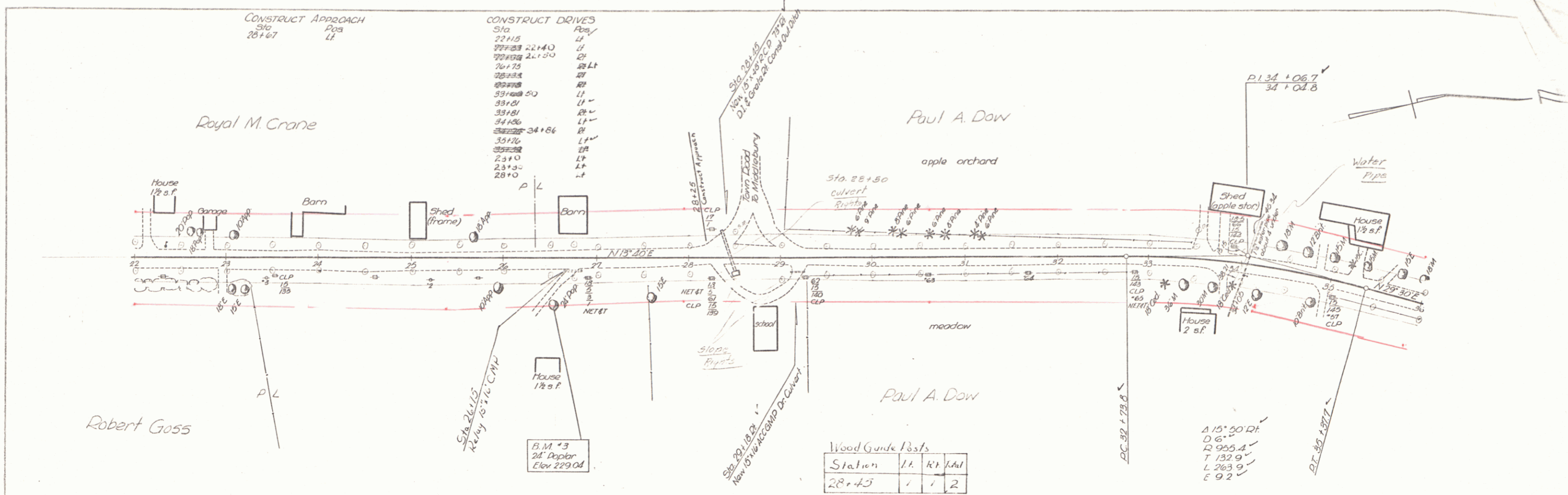
APPROVED: 18 AUG. 1950
 H. W. Mearns
 HIGHWAY ENGINEER

APPROVED: 21 Aug. 1950
 S. W. Mearns
 DISTRICT HIGHWAY COMMISSIONER

PROJECT S NO. 230 (1) FILED
 SHEET 1 OF 26

PLAN	DATE
PROPOSED	1938
REVISIONS	
NO.	DATE
1	
2	
3	
4	
5	
6	
7	
8	
9	
10	

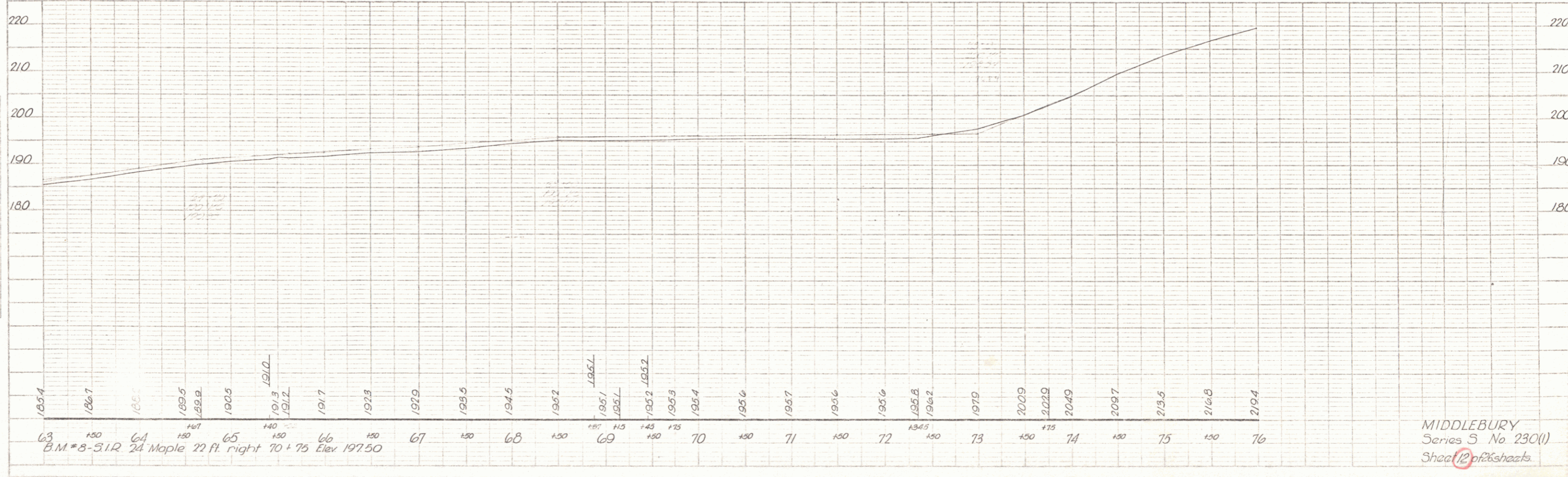
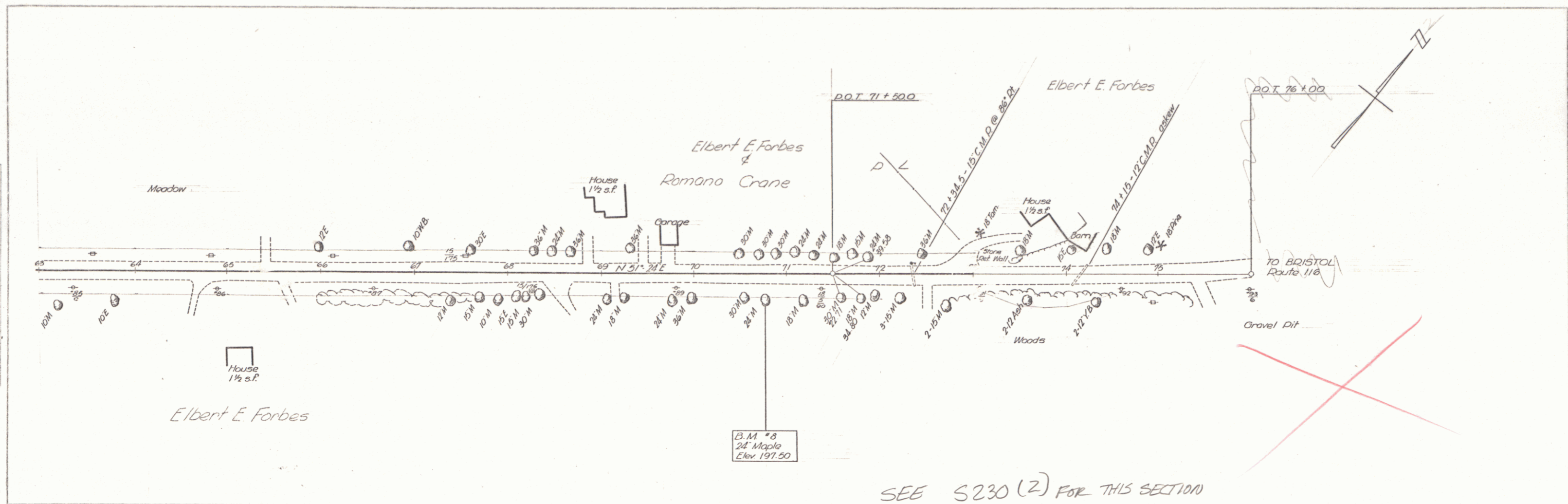
PROPOSED	1938
REVISIONS	
NO.	DATE
1	
2	
3	
4	
5	
6	
7	
8	
9	
10	



MIDDLEBURY Series S No 230(1)
Sheet 2 of 2 sheets

PLAN
 DRAWN BY
 CHECKED BY
 DATE
 PROJECT NO.
 SHEET NO.

PROFILE
 DRAWN BY
 CHECKED BY
 DATE
 PROJECT NO.
 SHEET NO.



MIDDLEBURY
 Series S No 230(1)
 Sheet 12 of 6 sheets