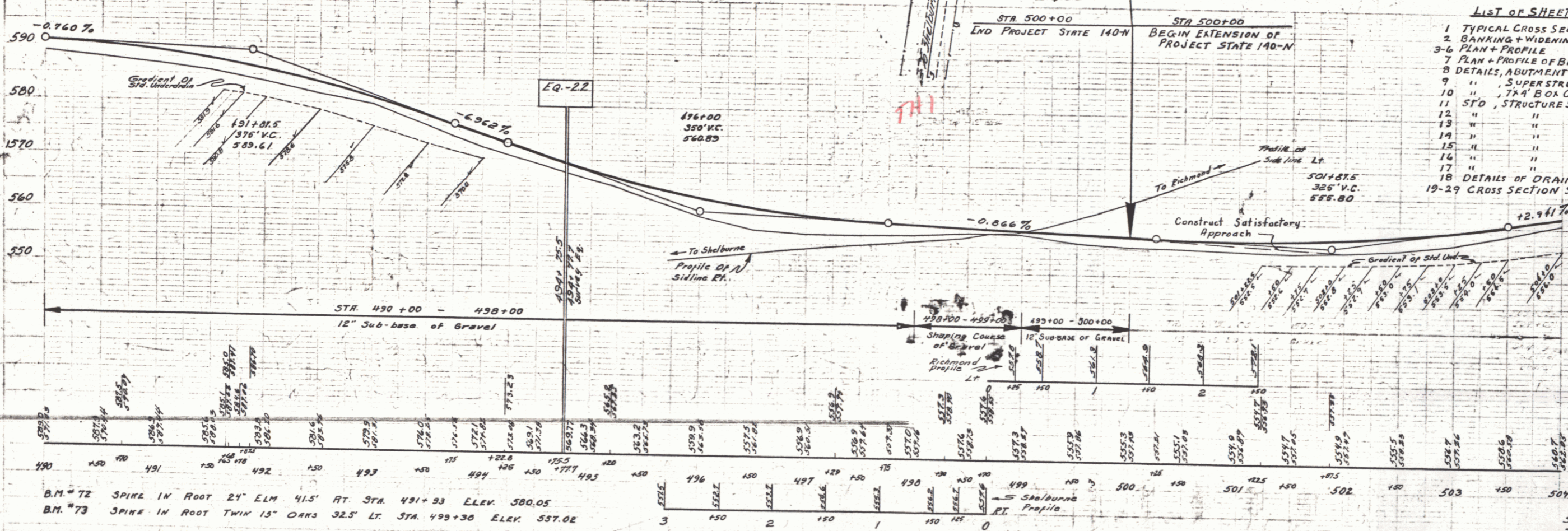


BOOK	PAGE	DATE	STATE
21	18	8-23-40	140-N 1341 3 36

EXTENSION SHEET 3 OF 25

Ramps, intersections, and approaches indicated by shaded areas are to be treated with Double Tack Coat of Refined Tar. (Item 29).



- LIST OF SHEETS FOR EXTENSION OF PROJECT STATE 140-N**
- 1 TYPICAL CROSS SECTION OF IMPROVEMENT
 - 2 BANKING + WIDENING TABLES
 - 3-6 PLAN + PROFILE
 - 7 PLAN + PROFILE OF BRIDGE 534+656-534+854
 - 8 DETAILS, ABUTMENT + CUTOFF WALL
 - 9 " SUPERSTRUCTURE
 - 10 " 7x4' BOX CULVERT STA 520+56.5
 - 11 STD. STRUCTURE SHEET SB 7-A, BALUSTRADE RAIL
 - 12 " " " " S B 11, BARRICADES, SIGNS + LIGHTS 500
 - 13 " " " " S 28, PIPE CULVERTS
 - 14 " " " " S 30, GUARD RAIL
 - 15 " " " " S 30-A BOUNDARY MARKERS
 - 16 " " " " S 40 BARRICADES, SIGNS + LIGHTS
 - 17 " " " " S 41 ROUNDING SLOPES
 - 18 DETAILS OF DRAINAGE DITCHES
 - 19-29 CROSS SECTION SHEETS

B.M. 72 SPIKE IN ROOT 24' ELM 41.5' RT STA. 491+93 ELEV. 580.05
 B.M. 73 SPIKE IN ROOT TWIN 15' OAKS 32.5' LT. STA. 499+30 ELEV. 557.02

Hinesburg Route 116
 SERIES STATE NO. 140-N
 SHEET 3 OF 36 SHEETS
 EXTENSION 3 29