

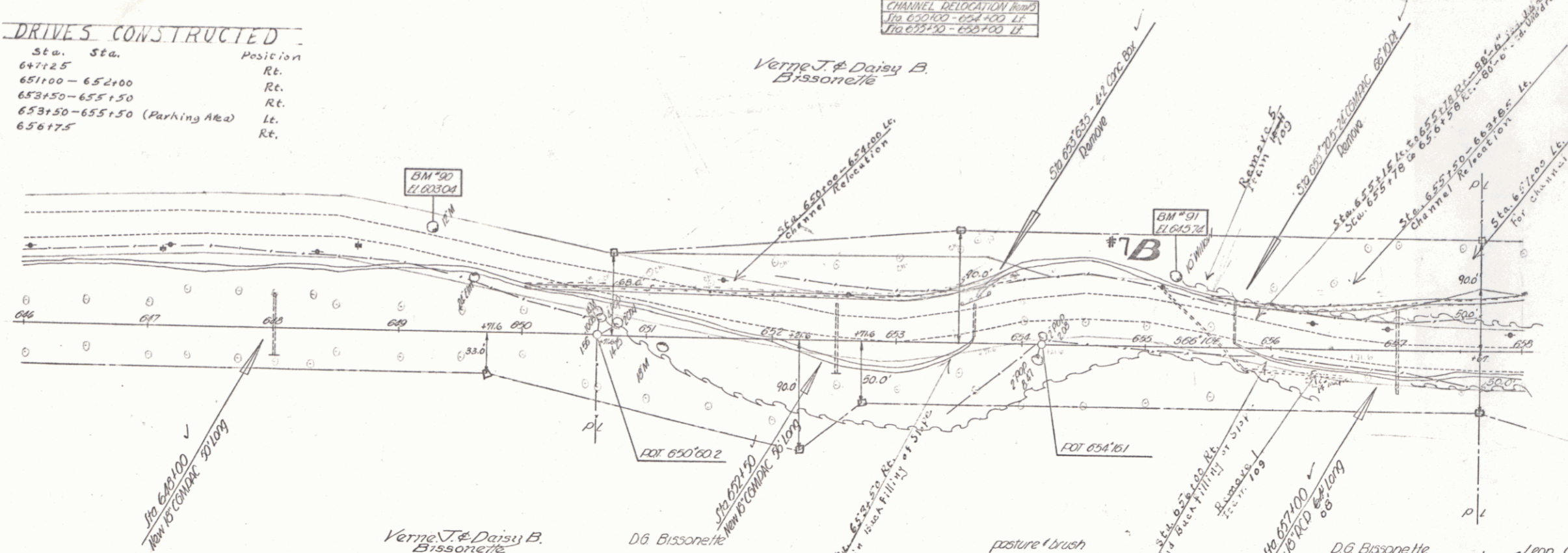
**DRIVES CONSTRUCTED**

Sta.	Sta.	Position
647+25		Rt.
651+00	652+00	Rt.
653+50	655+50	Rt.
653+50	655+50	Left (Parking Area)
656+75		Rt.

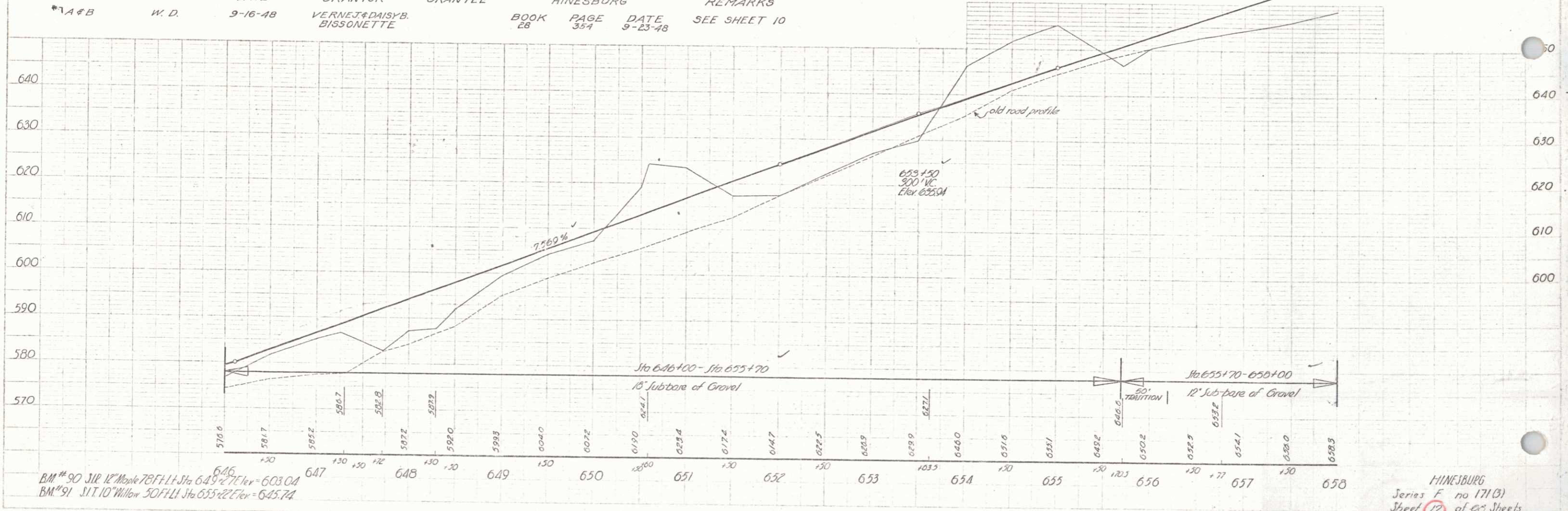
CHANNEL DELOCATION Map  
 To 650+00 - 654+00 Lt.  
 To 657+50 - 657+00 Lt.

PLAN  
 DATE 12-16-48  
 DRAWN BY  
 CHECKED BY  
 APPROVED BY

PROFILE  
 DATE 12-16-48  
 DRAWN BY  
 CHECKED BY  
 APPROVED BY



PARCEL	INSTRUMENT	DATE	GRANTOR	GRANTEE	RECORDED HINESBURG	REMARKS
A & B	W. D.	9-16-48	VERNE J & DAISY B. BISSONETTE	D.G. BISSONETTE	BOOK 28 PAGE 334 DATE 9-23-48	SEE SHEET 10



BM #90 J.T. 12" Willow 78' Ht. Sta 649+27 Elev = 603.04  
 BM #91 J.T. 10" Willow 30' Ht. Sta 653+27 Elev = 645.74

HINESBURG  
 Series F no 171(B)  
 Sheet 12 of 68 Sheets