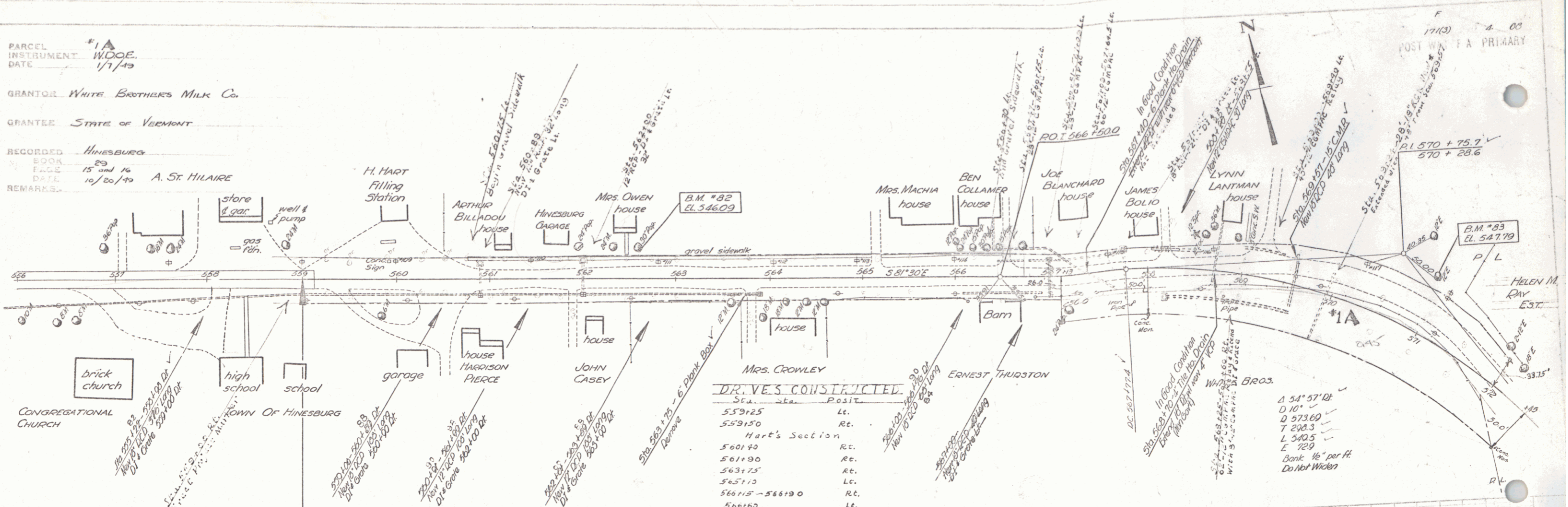


PARCEL #1A
 INSTRUMENT W.D.O.E.
 DATE 1/7/19

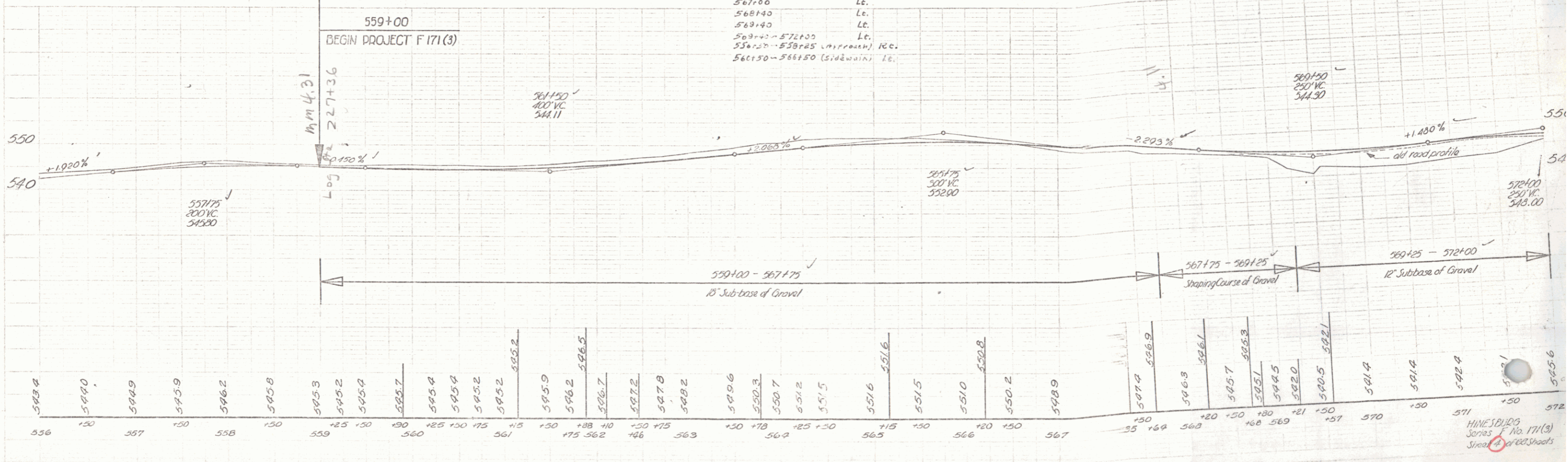
GRANTOR White Brothers Milk Co.
 GRANTEE State of Vermont

RECORDED Hinesburg
 BOOK 29
 PAGE 15 and 16
 DATE 10/20/19
 REMARKS A. St. HILAIRE



DR. VES. CONSTRUCTED

Sta.	Posit.
559+25	Lt.
559+50	Rt.
Hart's Section	
560+40	Rt.
561+90	Rt.
563+75	Rt.
565+10	Lt.
566+15 - 566+90	Rt.
566+60	Lt.
567+00	Lt.
568+40	Lt.
569+40	Lt.
569+40 - 570+00	Lt.
570+00 - 570+25 (Impassable)	Rt.
567+50 - 567+50 (Sidewalk)	Lt.



HINESBURG
 SERIES F No. 171(3)
 Street A of 1922 Sheets