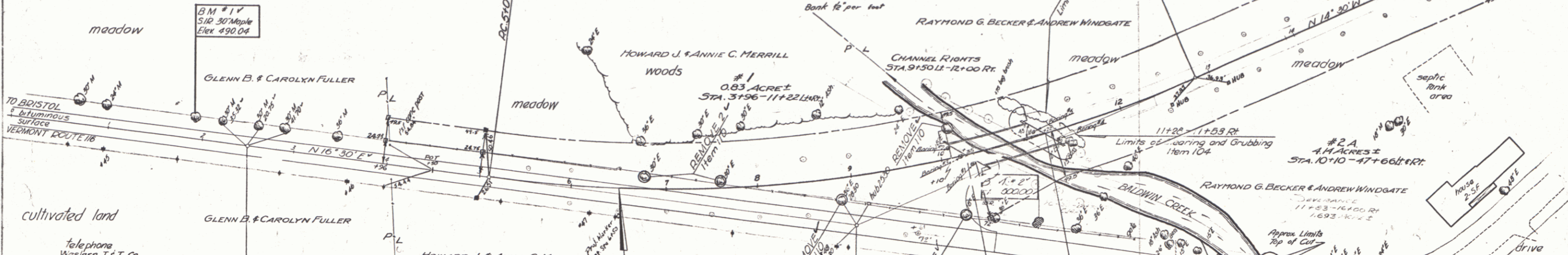


PARCEL KIND DATE GRANTOR GRANTEE RECORD BOOK PAGE DATE
 #1 W.D.O.E. 3-10-54 Howard J. & Anne C. Merrill St. of Vt. Bristol 35 19 3-30-54
 #2 AB C.O.D. 1-14-54 Raymond G. Becker & Andrew Windgate St. of Vt. Bristol 34 576-74 1-15-54

CONSTRUCT APPROACH
 9'00 R/W

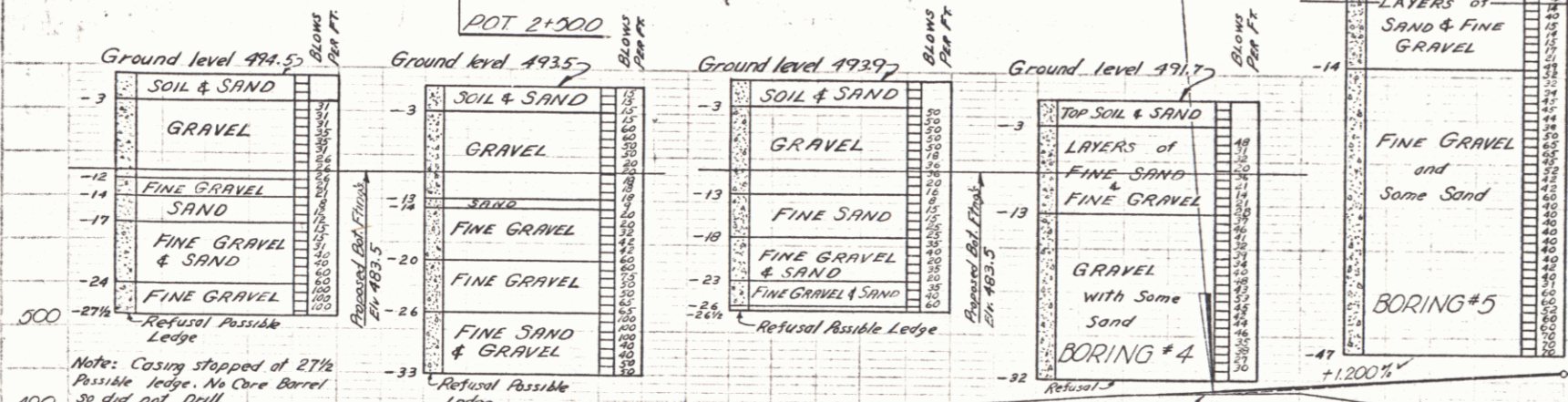
PLANK GUARD RAIL
 12' 28 R/W
 12' 94 R/W

THREE CABLE GUARD RAIL
 WITH STEEL POSTS
 9'61-10'09"
 10'99-11'47"
 11'25-11'70"
 10'24-11'40"



Telephone
 Western T & T Co.
 Richmond, Vermont
 Power
 CVPS Corp.
 Middlebury, Vermont

Control of Section of Old Highway Between Sta. 9+61 R/W and Sta. 21+73 R/W. Relinquished to Town of Bristol. Recorded Book 35, Page 225, Date Sept. 23, 1955



Notes for borings:
 BORING #1: Note: Casing stopped at 27 1/2' Possible Ledge. No Core Barrel so did not drill.
 BORING #2: Note: Casing stopped at 33' Possible Ledge. No Core Barrel.
 BORING #3: Note: Casing stopped at 26 1/2' Possible Ledge. No Core Barrel.
 BORING #4: Construct Satisfactory Approach.
 BORING #5: +1.200%

ESTIMATED BRIDGE QUANTITIES		
QUANTITY	ITEMS	ITEM NO.
615 cu	Channel Excavation of Earth	108A
306 cu	Channel Excavation of Rock	108B
249 cu	Structure Excavation	107
1/18	Maintenance of Traffic for Bridge Proj.	109
39	Cutting and Removing Trees	110
103	Bitum Conc Pavement for Bridge Floors	301
193	Concrete Class 15 (modified)	401A
35000 lbs	Reinforcing Steel	402
169103 lbs	Structural Steel	403A
25 cu	Asphaltic Asbestos Coating	407
645 cu	Stone Fill	521
178	Two Cable Guard Rail	542
1/3	Removal of Present Superstructure	442

SUPERSTRUCTURE NOTE
 Shear Connectors to be 5" L x 9" W x 10" long to be shop welded with 1/4" fillet all around to top of W800 beams. 100 @ 2'-3" c/c. Starting at 1/2' of span, the toes of flanges shall face the abutments.

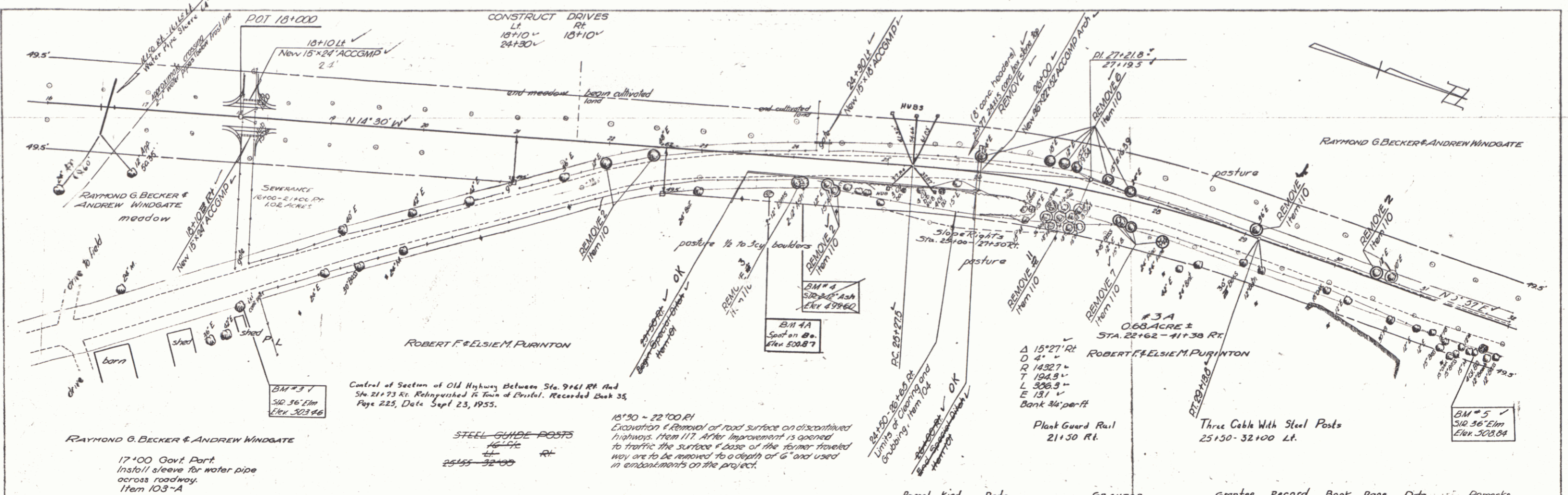
- LIST OF BRIDGE SHEETS**
- Sheet No. 15 Earthwork Sheet (Channel Excavation)
 - 16 Plan and Profile Sheet
 - 34 Preliminary Information Sheet
 - 35 Details of Abutment No. 1
 - 36 Details of Abutment No. 2
 - 37 Reinforcing Steel Schedule
 - 38 Standard Structure Sheet 5B-30 (H-20)
 - 39 Standard Structure Sheet 5B-5C (Two Cable GR for Bridges)
 - 40 Standard Structure Sheet 5B-20 (Details C.O.E.H.J.K.L)
 - 41 Standard Structure Sheet 5B-11 (Barricades, Signs & Lights) Bridges
 - 60-82 Channel Sections

B.M. #1 Spike in Root 30" Maple 185 ft. E. of Sta. 1+92 Elev. 490.01'
 B.M. #2 Spike in Root 36" Elm. 97' R/W Sta. 10+32 Elev. 500.00'

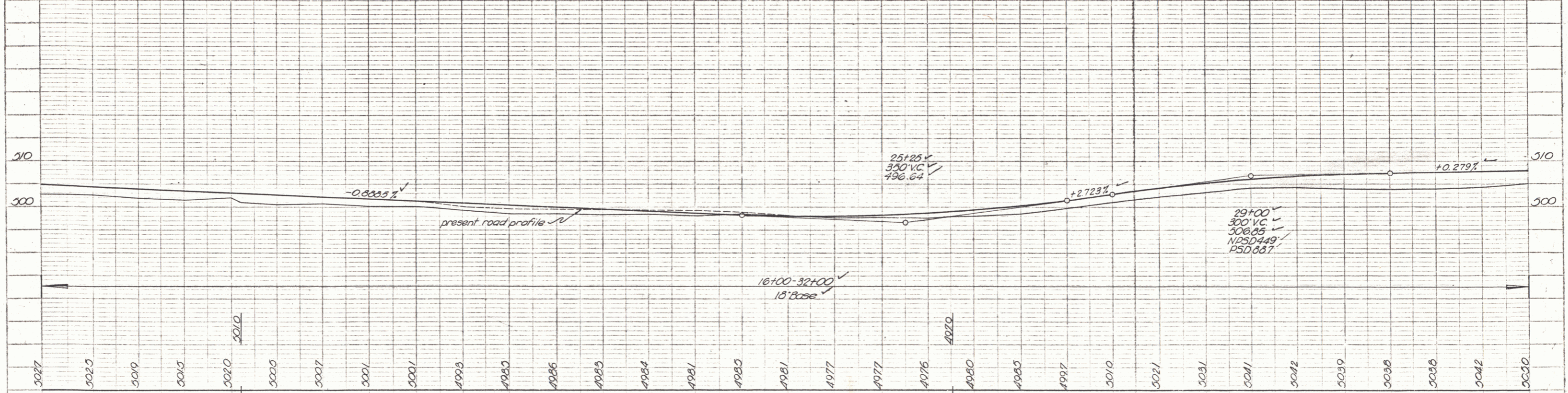
Rev. 4/2/54 Lmb.
 PART A BOSTON-STARKSBORO
 Project E. No. 171 (6)
 Sheet 16 of 110

PLAN
 SHEET NO. 17
 DATE BOOK FOR LAND CHG. 1/10/54
 170
 5/27

PLAN
 SHEET NO. 17
 DATE BOOK FOR LAND CHG. 1/10/54
 170
 5/27



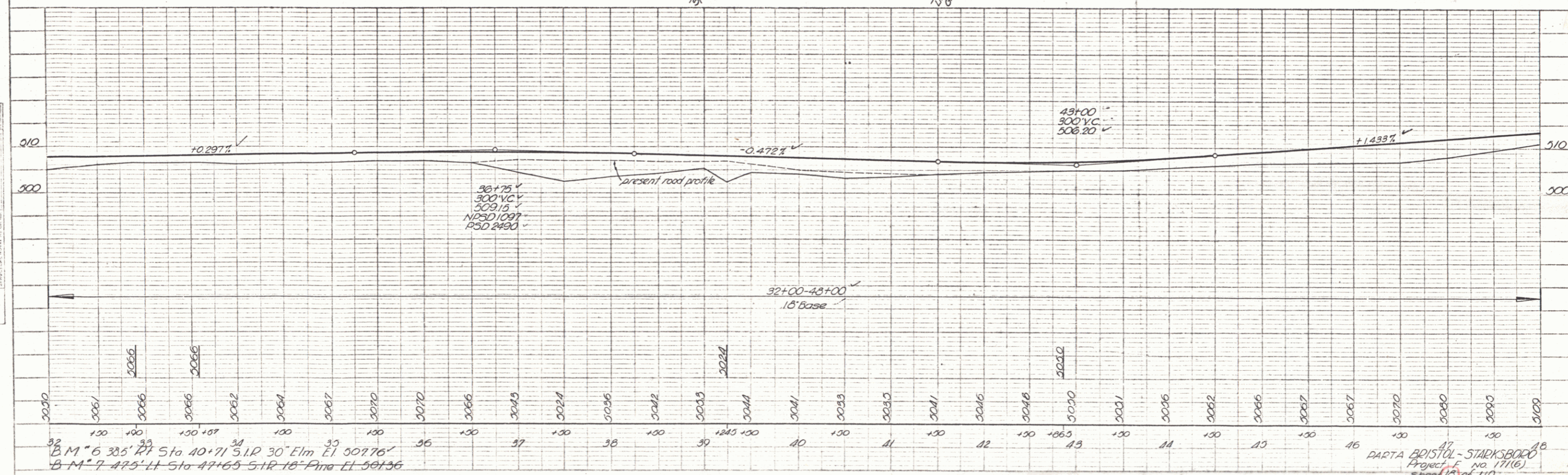
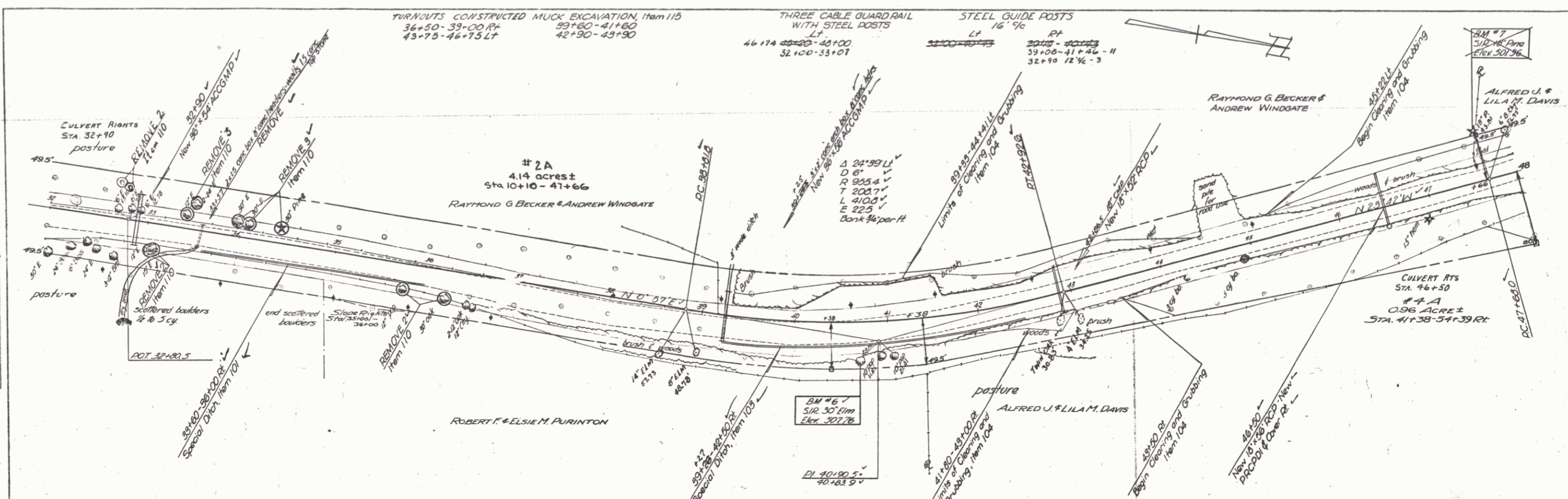
Parcel	Kind	Date	GRANTOR	Grantee	Record	Book	Page	Date	Remarks
3A	W.D.R.E.	3-10-54	Robert F. & Elsie M. Purinton	St. of Vt	Bristol	35	45	5-25-54	See also sheets 18, 21, 22



B.M. #3 203' Rt Sta 19+22 (Trav Line) S.I.R. 36' Elm El 503.46
 B.M. #4 245' Rt Sta 24+08 STR Twine 12" Ash El 499.60 B.M. #4A 40' Rt Sta 23+75 Spot on Ea. El 500.87
 B.M. #5 335' Rt Sta 31+74 S.I.R. 36' Elm El 508.84

PLAN
 DATE: 11/23/80
 DRAWN BY: J.S.
 CHECKED BY: J.S.
 SCALE: AS SHOWN

DATE: 11/23/80
 DRAWN BY: J.S.
 CHECKED BY: J.S.
 SCALE: AS SHOWN



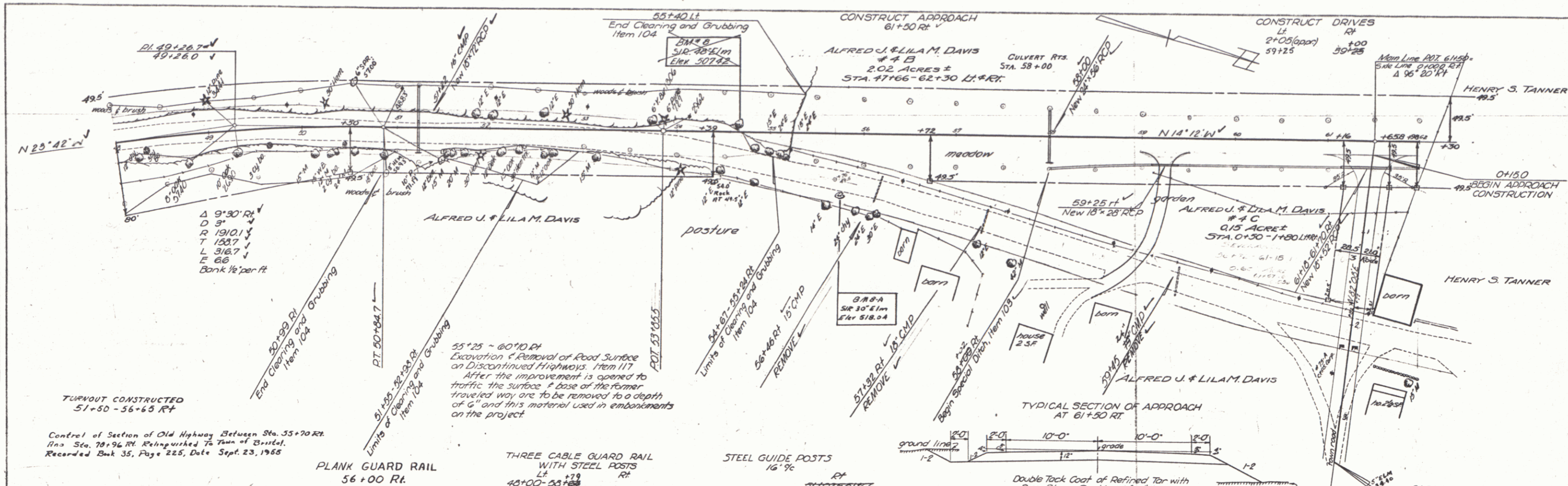
B.M. #6 3.85' RT Sta 40+71 S.I.R. 30' Elm LI 509.76'
 B.M. #7 4.25' LI Sta 47+65 S.I.R. 16' Pine LI 501.36'

PARTIAL BOSTON-STARKSBORO
 PROJECT NO. 171(6)
 SHEET 18 OF 110

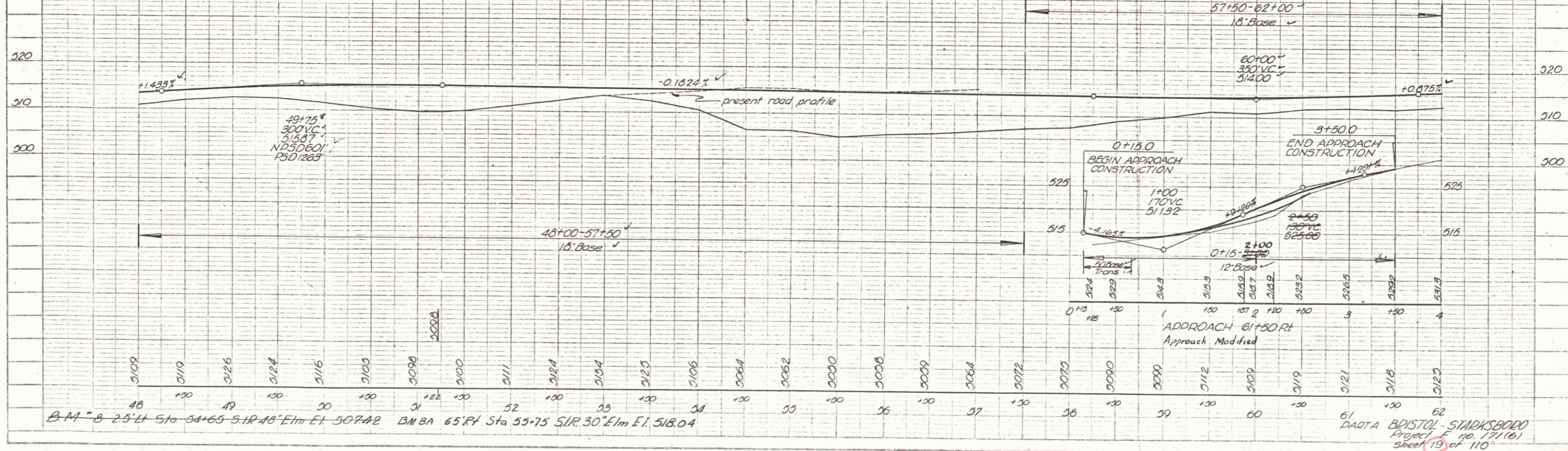
PLATE 1 - PLAN PROFILE OF ROAD
 DRAWN BY: J.S.
 CHECKED BY: J.S.

PLAN	DATE	BY
ALUMINUM CHANG.	8-30	ALP.
NOTE BOOK	8-30	ALP.

DATE	BY
8-30	Palmer
2-02	



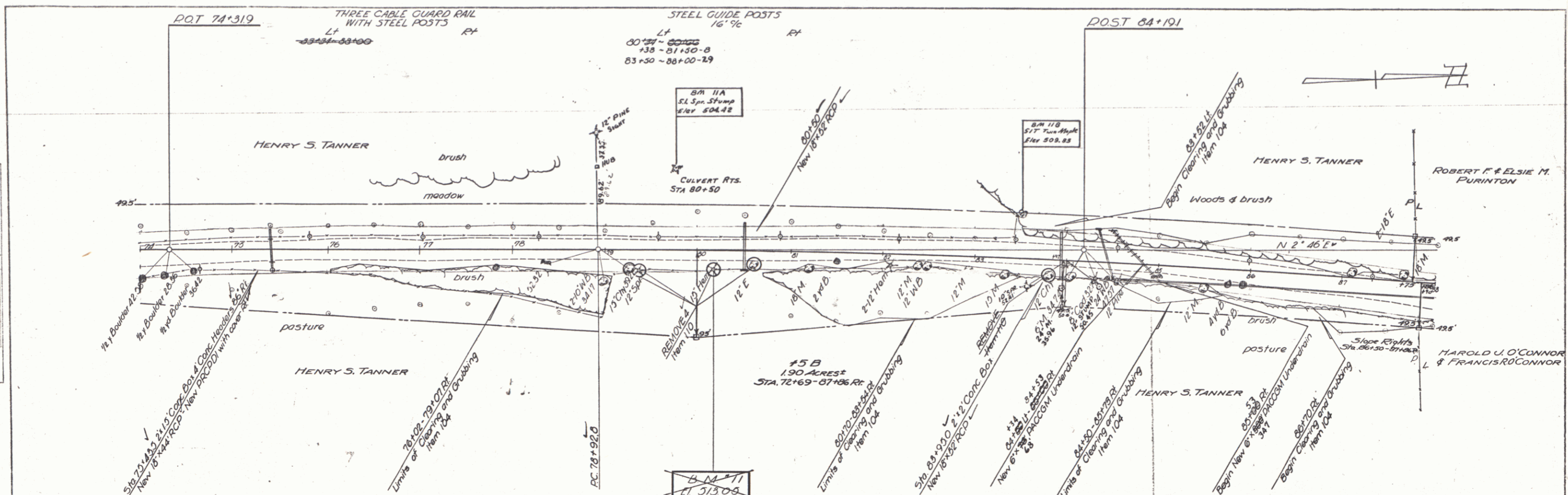
Parcel	Kind	Date	Grantor	grantee	Record Book	Page	Date	Remarks
#4ABC	W.D.E.	3-10-54	Alfred J. & Lila M. Davis	St. of Vt. Bristol	35	20	3-30-54	See sheets 18, 20



B.M. B 2.5' Lt Sta 54+65 SUR 48' Elm El. 507.42
 B.M. B 65' Rt Sta 55.75 SUR 30' Elm El. 518.04

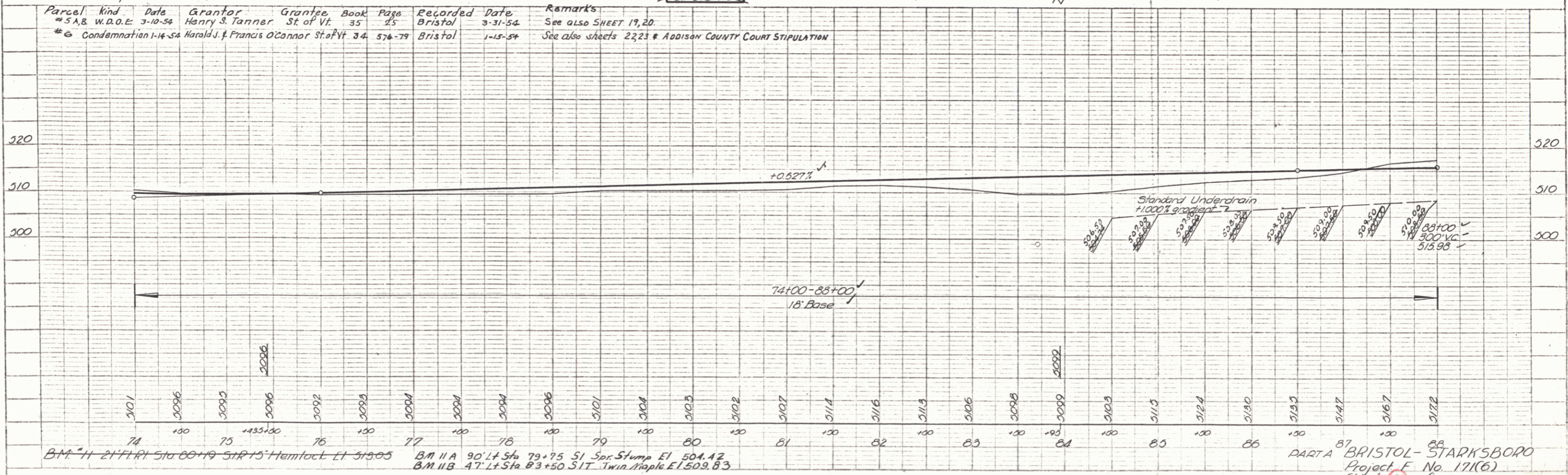
61 DARTA BRISTOL - STARKSBORO
 Project No. 171(15)
 Sheet 19 of 110

PLAN
 DATE 2-27
 DRAWN BY R. POLMER
 CHECKED BY R. POLMER
 SCALE 1" = 40'



Parcel	kind	Date	Grantor	Grantee	Book	Page	Recorded	Date	Remarks
#5A,B	W.D.O.E.	3-10-54	Henry S. Tanner	St. of Vt.	35	25	Bristol	3-31-54	See also SHEET 19, 20
#6	Condemnation	1-14-54	Harold J. & Francis O'Connor	St. of Vt.	34	574-79	Bristol	1-15-54	See also sheets 22, 23 & Addison County Court Stipulation

PROFILE
 DATE 2-27
 DRAWN BY R. POLMER
 CHECKED BY R. POLMER
 SCALE 1" = 40'

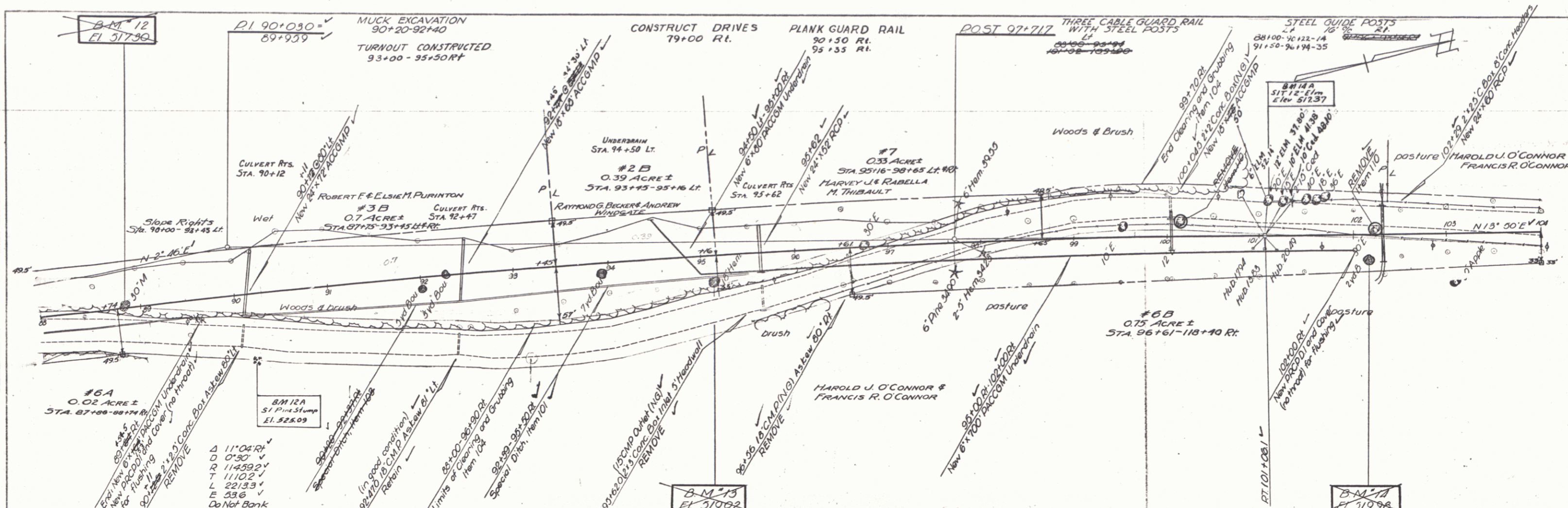


B.M. #11 2 1/4" x 1 1/4" 510 80+19 511 75 512 15 Hemlock Et 513 05
 B.M. #1A 90' L x Sta 79+75 51 Sor. Stump Et 504.42
 B.M. #1B 47' L x Sta 83+50 517 Twin Maple Et 503.83

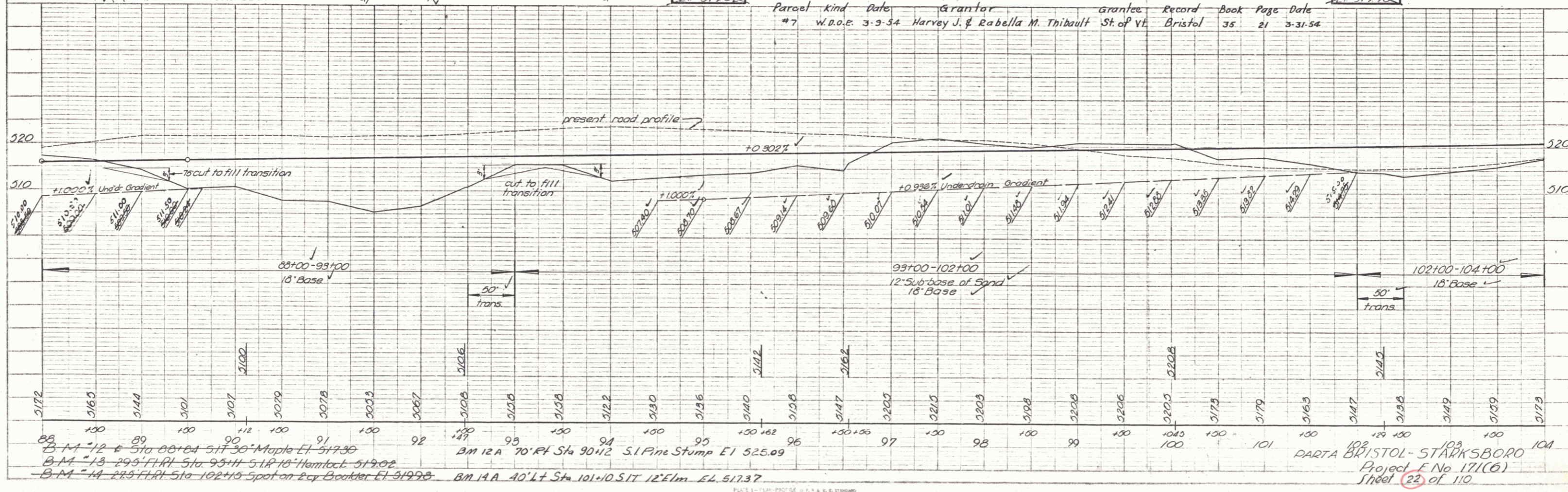
DARTA BRISTOL-STARKSBORO
 Project F No. 17(K6)
 Sheet 21 of 110

PLATE 1 - PLAN PROFILE 1:40 & 1:100
 SCALE 1" = 40' & 1" = 10'
 M.S.D. Co. Inc. 1955

PLAN
 2-58
 Palmer
 2-58



2-58
 Palmer
 2-58



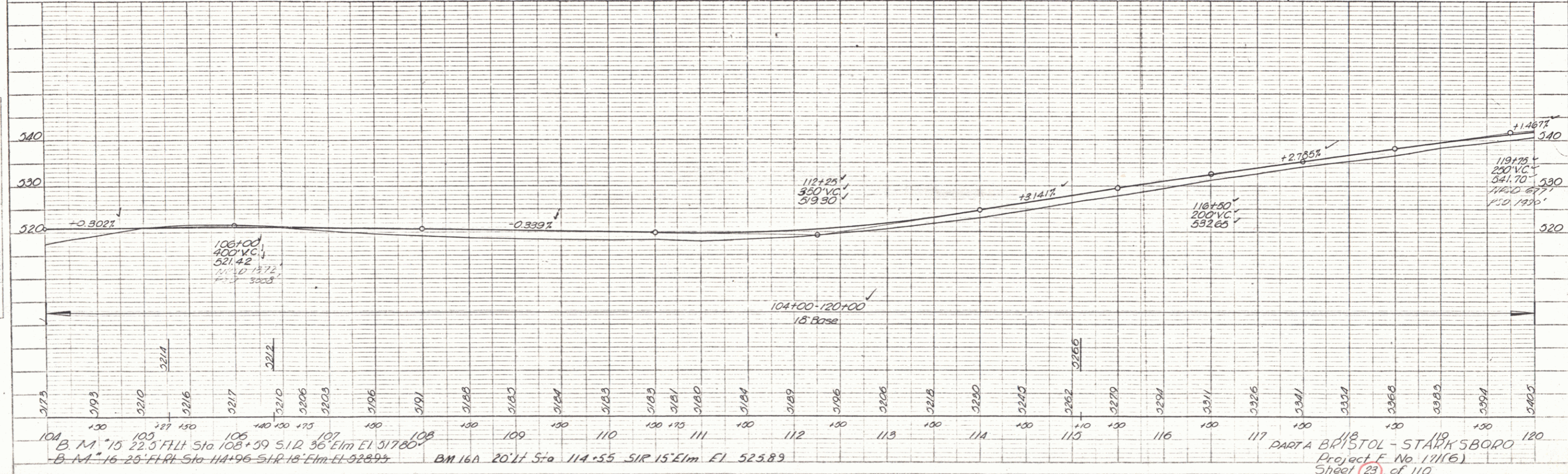
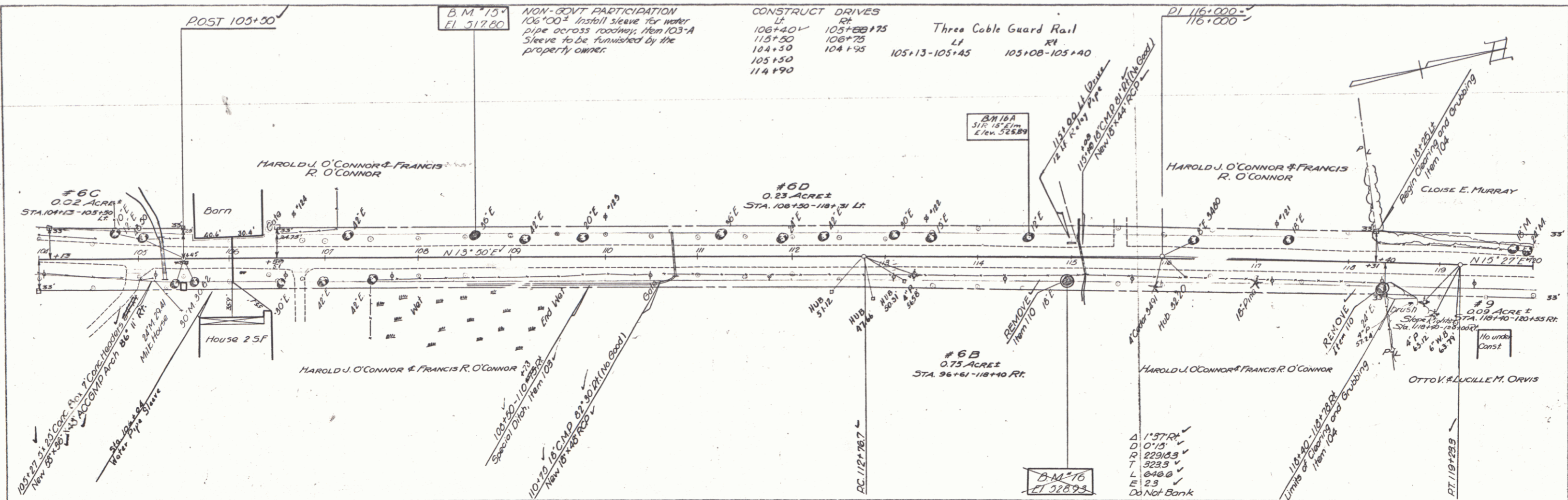
B.M. 12 511.30 Maple El. 517.30
 B.M. 13 511.10 Hamlock El. 517.02
 B.M. 14 511.10 Spot on E. of Boulder El. 517.98
 B.M. 12A 70' Rt Sta 90+12 51 Pine Stump El. 525.09
 B.M. 14A 40' Lt Sta 101+0 517 12' Elm El. 517.37

Parcel	Kind	Date	Grantor	Grantee	Record	Book	Page	Date
#7	W.D.O.E.	3-9-54	Harvey J. & Rabella M. Thibault	St. of Vt.	Bristol	35	21	3-31-54

DARTA BRISTOL-STARKSBORO
 Project E No 171(C)
 Sheet 23 of 110

PLAN
 DATE: 10/1/59
 DRAWN BY: Palmer
 CHECKED BY: Rice
 NO. OF SHEETS: 2-22

PROFILE
 DATE: 10/1/59
 DRAWN BY: Palmer
 CHECKED BY: Rice
 NO. OF SHEETS: 2-22

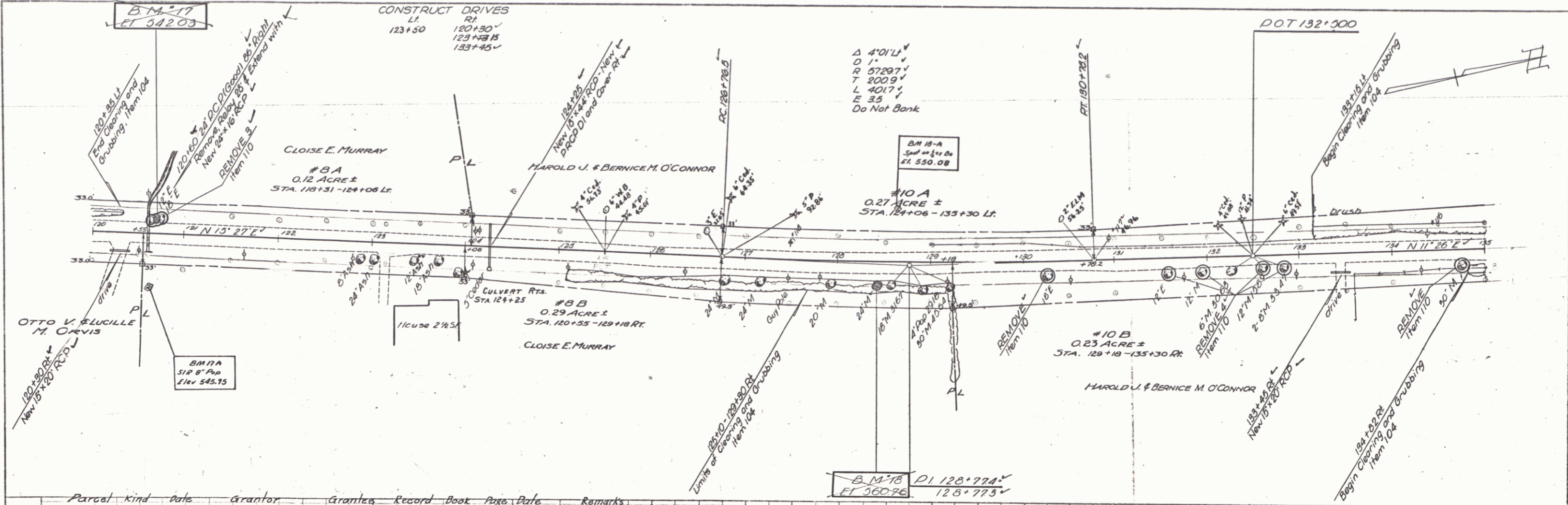


104 B.M. 15 22.5' FLL Sta 108+59 SIR 36' Elm El 517.80
 105
 106
 107
 108 B.M. 16 25' FLL Sta 114+96 SIR 18' Elm El 523.89
 109
 110
 111
 112
 113
 114
 115
 116
 117
 118
 119
 120

PLATE 1 - PLAN PROFILE
 METROPOLITAN ENGINEERING CO., NEW YORK
 10/1/59

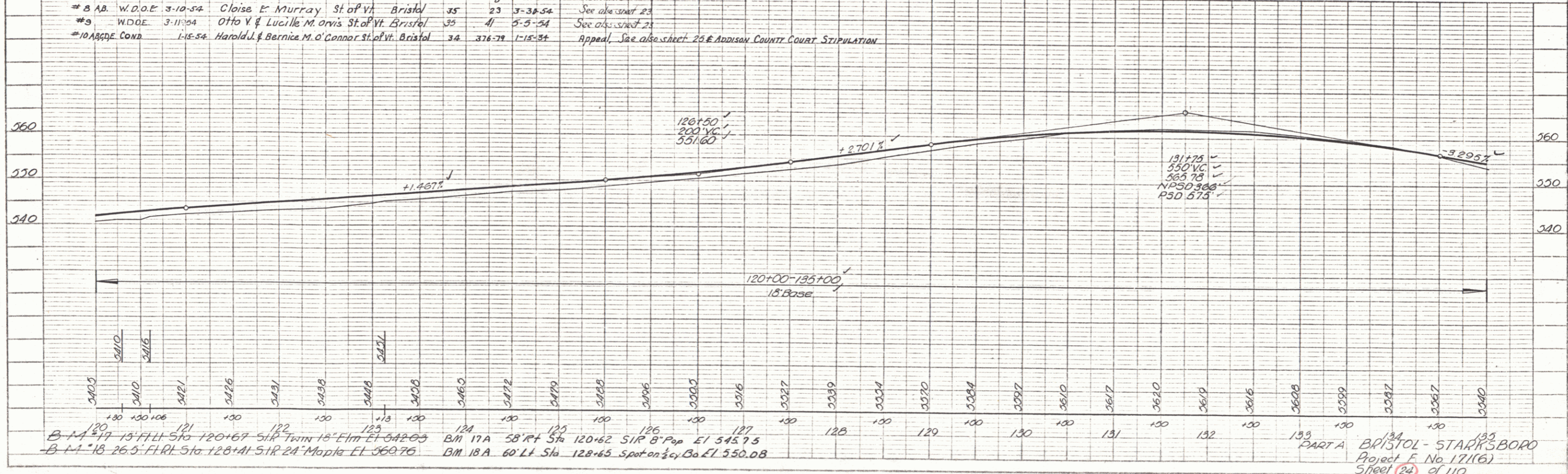
PART A BRISTOL - STARKSBORO
 Project No. 111(6)
 Sheet 23 of 110

PLAN
 DATE
 PRICE
 2-28



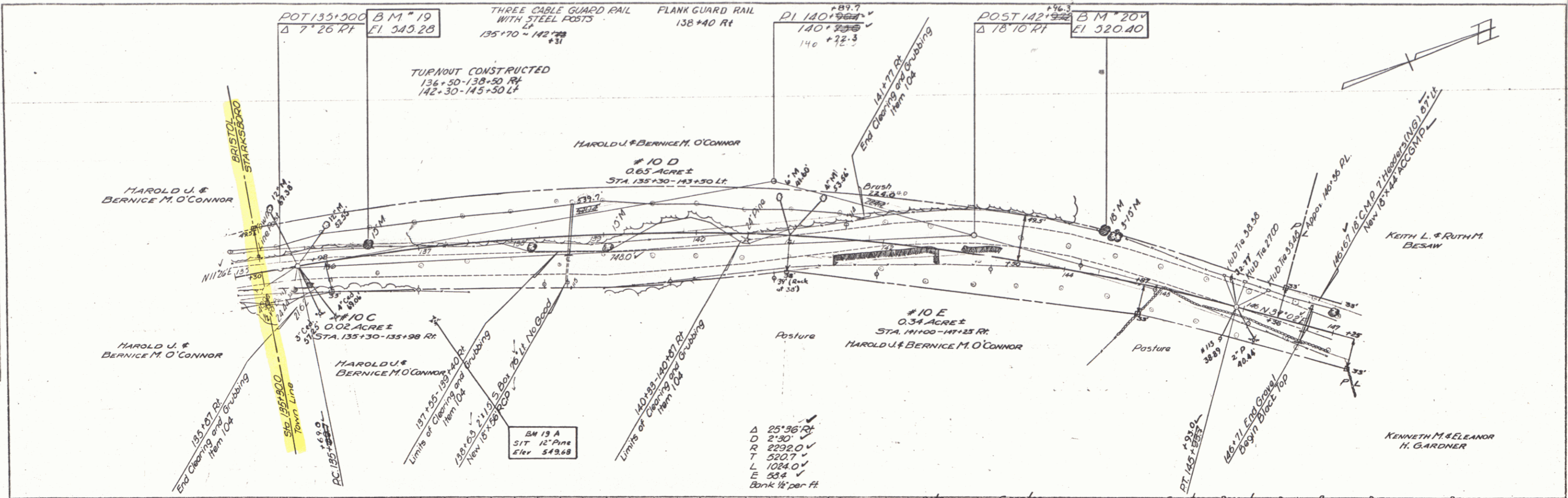
Parcel	Kind	Date	Grantor	Grantee	Record	Book	Page	Rate	Remarks
#8 AB	W.D.O.E	3-10-54	Cloise E. Murray	St. of Vt.	Bristol	35	23	3-38-54	See also sheet 23
#9	W.D.O.E	3-11-54	Otto V. & Lucille M. Orvis	St. of Vt.	Bristol	35	41	5-5-54	See also sheet 23
#10	ABSGE COND.	1-15-54	Harold J. & Bernice M. O'Connor	St. of Vt.	Bristol	34	376-79	1-15-54	Appeal. See also sheet 25 & Addison County Court Stipulation.

PROFILE
 DATE
 PRICE
 2-28



PART A
 BRISTOL - STARKSBORO
 Project E No. 171(6)
 Sheet (24) of 110

PLAN
 DATE 2-52
 DRAWN BY Foster Palmer
 CHECKED BY Foster Palmer
 TITLE BRISTOL-STARKSBORO
 PROJECT No. 171161
 SHEET 25 of 110



PROFILE
 DATE 2-52
 DRAWN BY Foster Palmer
 CHECKED BY Foster Palmer
 TITLE BRISTOL-STARKSBORO
 PROJECT No. 171161
 SHEET 25 of 110

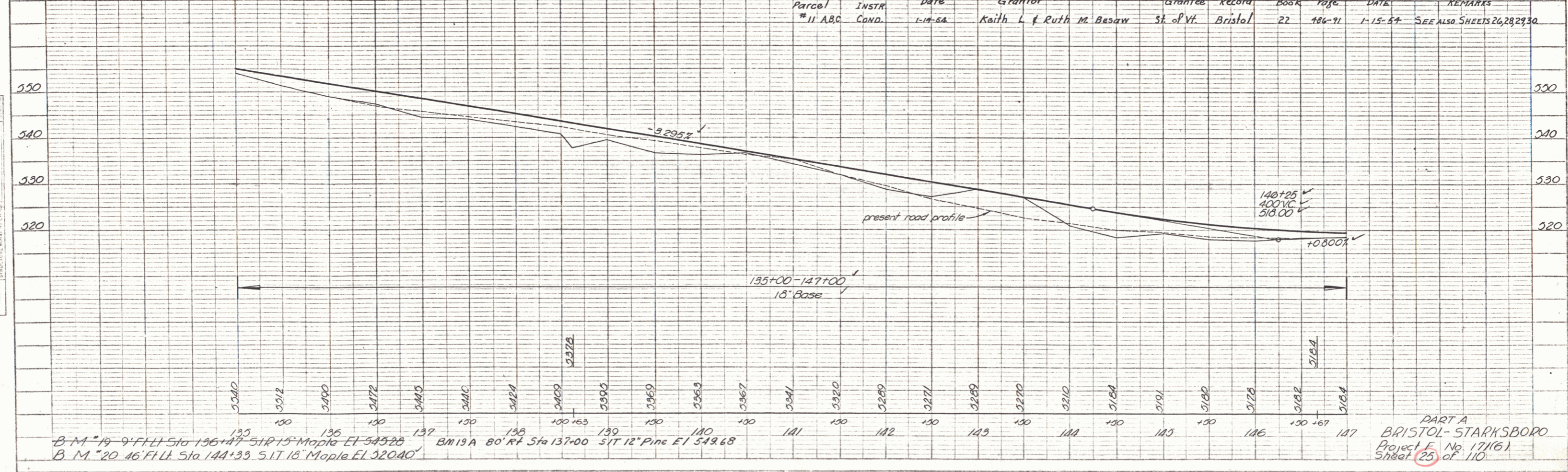


PLATE 1 - PLAN FROM LE & E. A. & L. STUBBS
 NEWYORK & BOSTON CO., NEW YORK
 617 P. O. BOX 111, LAGUARDIA

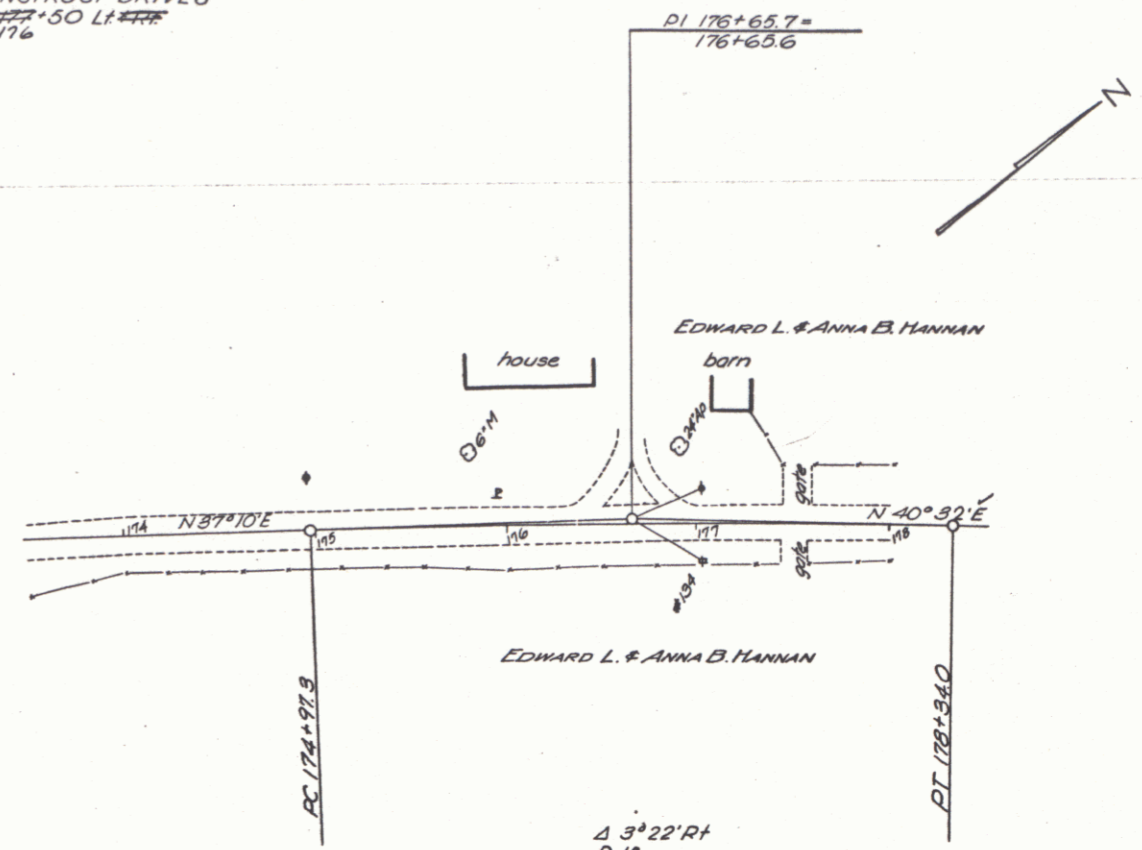
PART A
 BRISTOL-STARKSBORO
 Project No. 171161
 Sheet 25 of 110

PLAN
 SHEET NO. 502
 DATE 5-31-54
 DRAWN BY J.C. STANBRO
 CHECKED BY J.C. STANBRO
 ALL DIMENSIONS IN FEET
 UNLESS OTHERWISE NOTED

PROFILE
 SHEET NO. 502
 DATE 5-31-54
 DRAWN BY J.C. STANBRO
 CHECKED BY J.C. STANBRO
 ALL DIMENSIONS IN FEET
 UNLESS OTHERWISE NOTED

CONSTRUCT DRIVES
~~176+50 L+EFF~~
 176

VT ROUTE 116
 TO BRISTOL



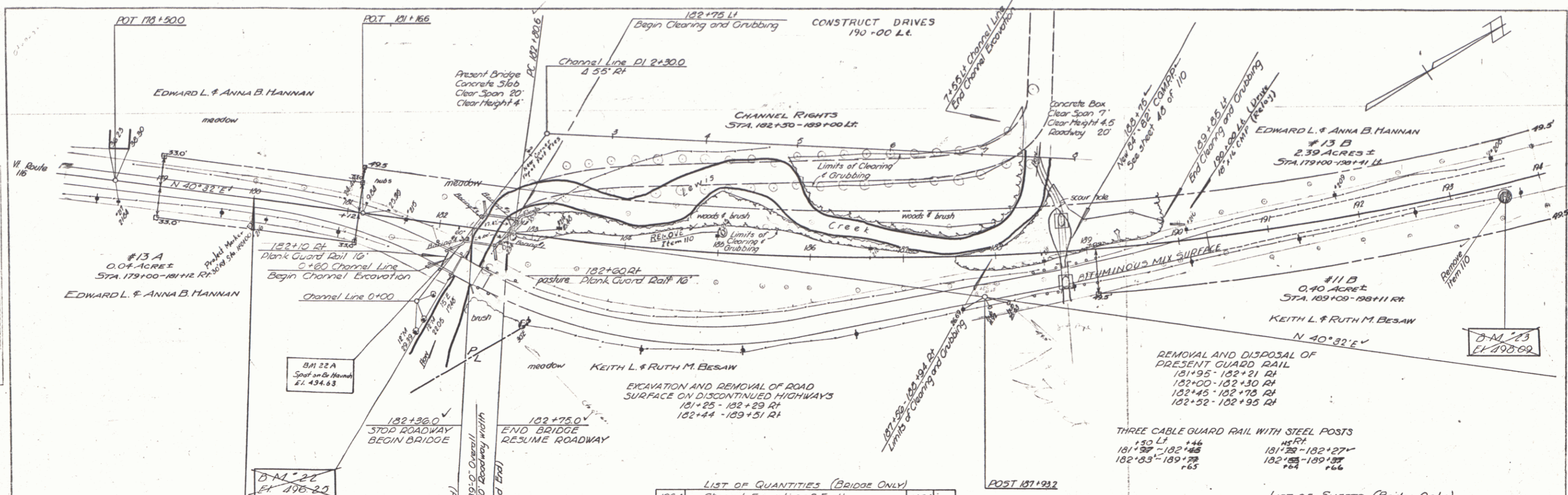
A 3° 22' Rt
 D 1'
 R 5729.7
 T 168.4
 L 336.7
 E 2.5
 Do Not Bank

Parcel	Kind	Date	Grantor	Grantee	Record	Book	Page	DATE	REMARKS
#13 A, B	Cond.	1-1-54	Edward L. & Anna B. Hannan	St. of Vt.	Starksboro	22	486-91	1-15-54	SEE ALSO SHEETS 26, 28, 29

Construct satisfactory approach
 -0.4767

497.7
 497.4
 497.1
 496.8
 497.6
 497.3
 496.9
 496.7
 496.3
 495.7

BRISTOL-STARKSBORO
 Proj. F. NO. 171(6) PART B
 Sheet 27 of 110

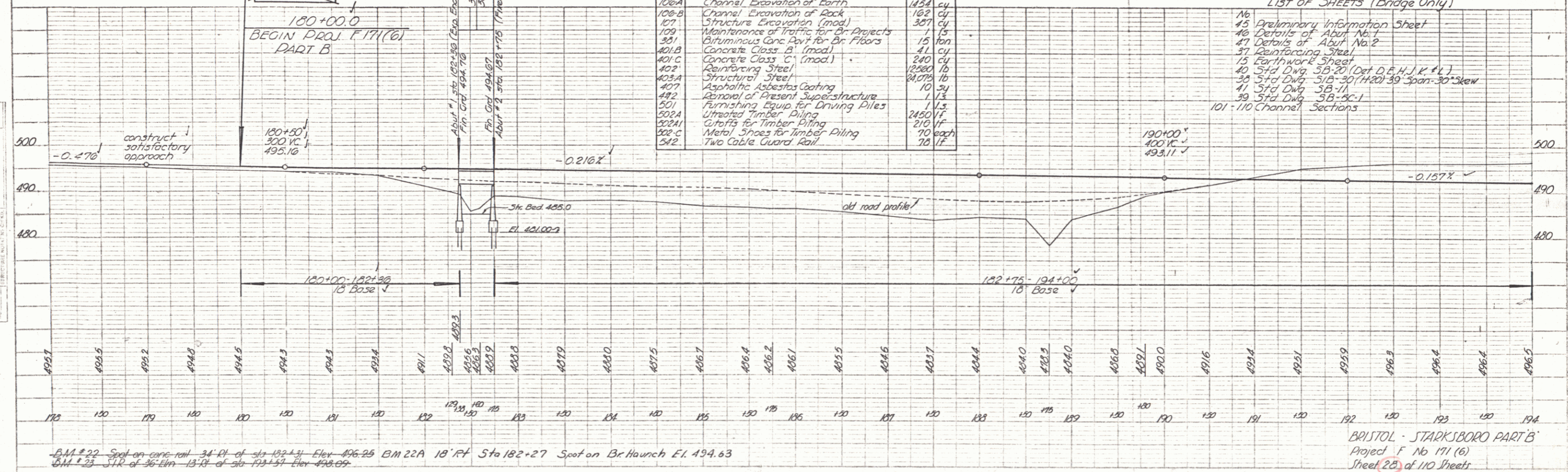


LIST OF QUANTITIES (BRIDGE ONLY)

106A	Channel Excavation of Earth	145A	cy
106B	Channel Excavation of Rock	182	cy
107	Structure Excavation (mod)	387	cy
109	Maintenance of Traffic for Br Projects	1	ls
381	Bituminous Conc Pavt for Br Floors	15	ton
401B	Concrete Class B (mod)	41	cy
401C	Concrete Class C (mod)	240	cy
402	Reinforcing Steel	15260	lb
403A	Structural Steel	24078	lb
407	Asphaltic Asbestos Coating	10	sq
492	Removal of Present Superstructure	1	ls
501	Furnishing Equip for Driving Piles	113	hr
502A	Ultrafast Timber Piling	2450	lf
502B	Cutoffs for Timber Piling	210	lf
502C	Metal Shoes for Timber Piling	70	each
542	Two Cable Guard Rail	78	lf

LIST OF SHEETS (BRIDGE ONLY)

10	Preliminary Information Sheet
11	Details of Abut No. 1
12	Details of Abut No. 2
13	Reinforcing Steel
14	Earthwork Sheet
15	Std Dwg. 5B-20 (Det. D.F.H.) K.L.L.
16	Std Dwg. 5B-30 (H20) 39' Span-30° Skew
17	Std Dwg. 5B-11
18	Std Dwg. 5B-5C-1
101-110	Channel Sections

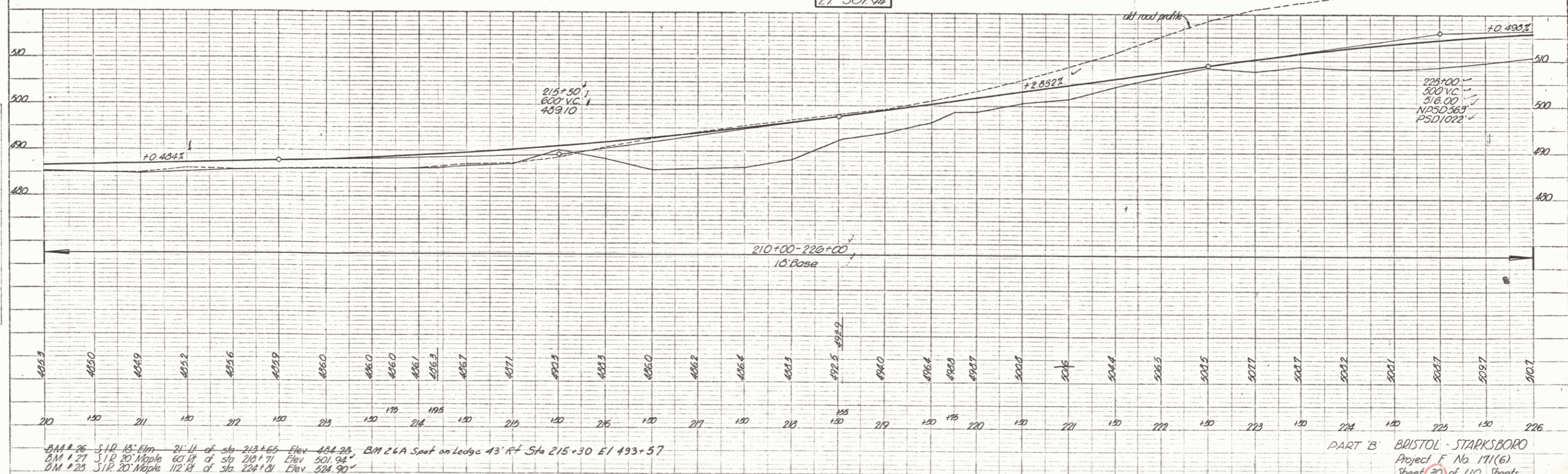
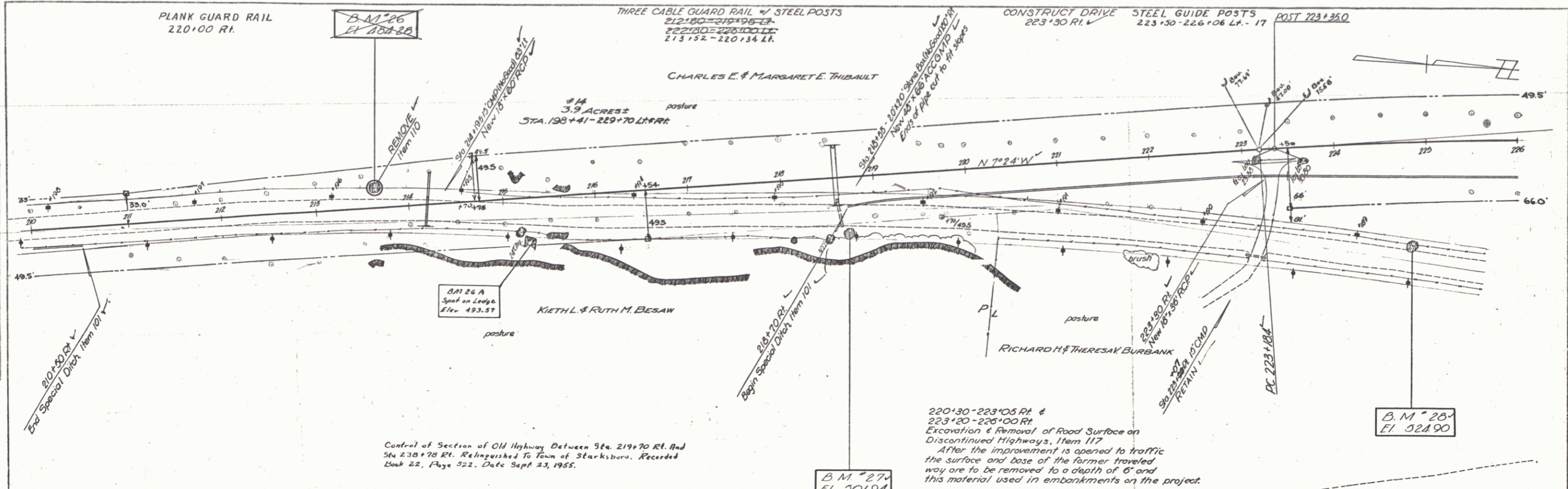


BM 22 Spot on care rail 34' Rt of Sta 182+31 Elev 496.25 BM 22A 18' Rt Sta 182+27 Spot on Brittaunch El. 494.63
 BM 23 STR of 36' km 13-13 of Sta 193+51 Elev 498.09

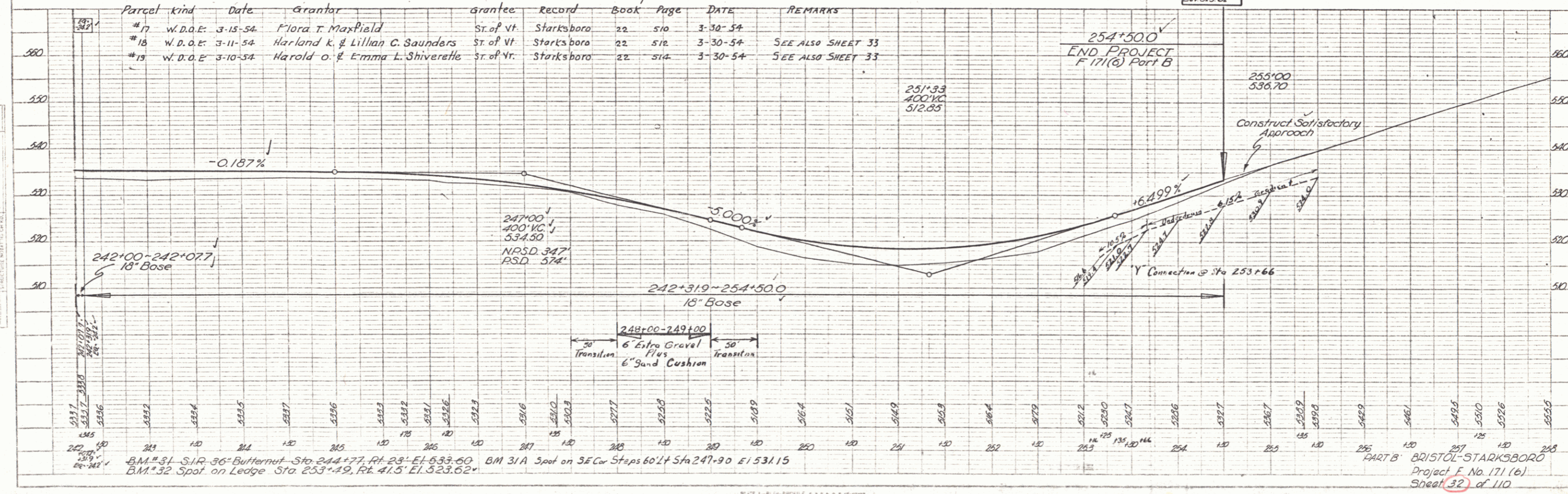
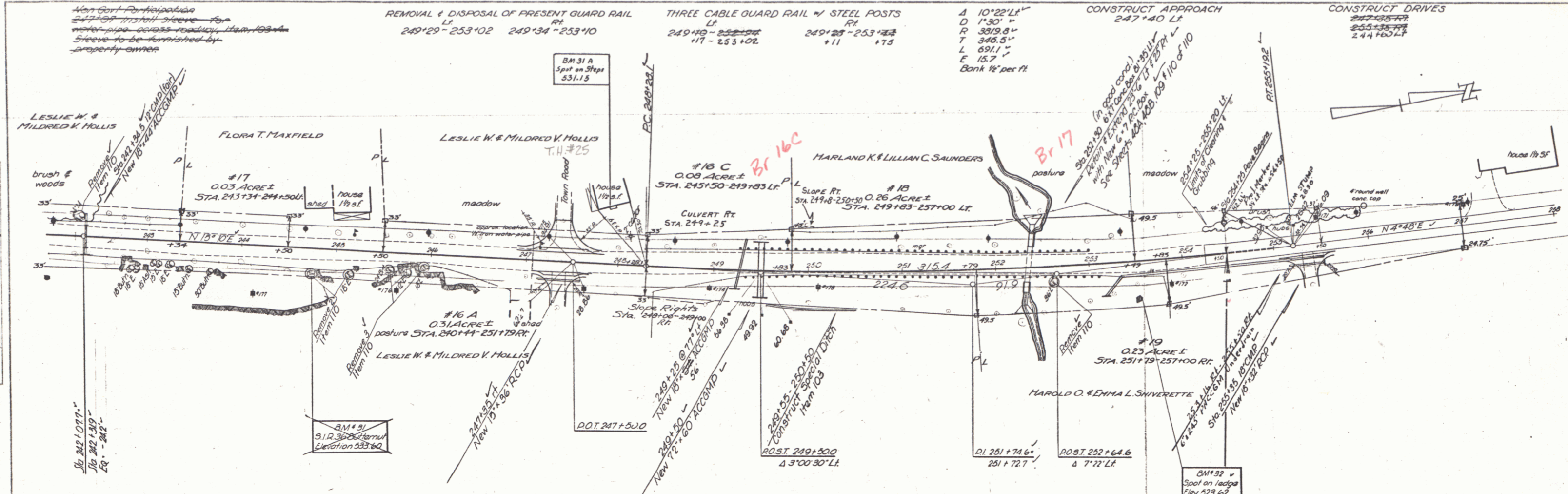
BRISTOL - STARKSBORO PART B
 Project F No 171 (6)
 Sheet 20 of 110 Sheets

PLAN
 DATE 9-27-52
 DRAWN BY [illegible]
 CHECKED BY [illegible]

PROFILE
 DATE 9-27-52
 DRAWN BY [illegible]
 CHECKED BY [illegible]



PART B BRISTOL - STARKSBORO
 Project F No 171(6)
 Sheet 30 of 110 Sheets

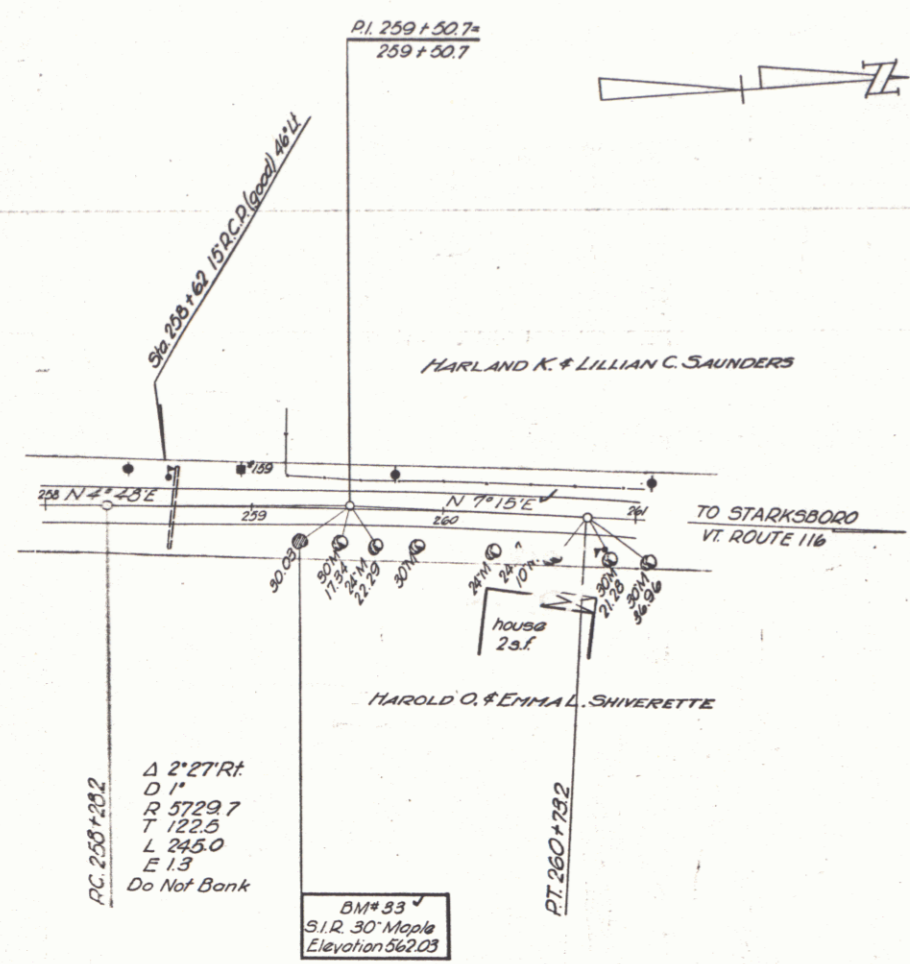


PLAN
 SCALE: 1" = 40'
 DATE: 1/15/55
 DRAWN BY: J. W. BROWN
 CHECKED BY: J. W. BROWN

PROFILES
 SCALE: 1" = 10'
 DATE: 1/15/55
 DRAWN BY: J. W. BROWN
 CHECKED BY: J. W. BROWN

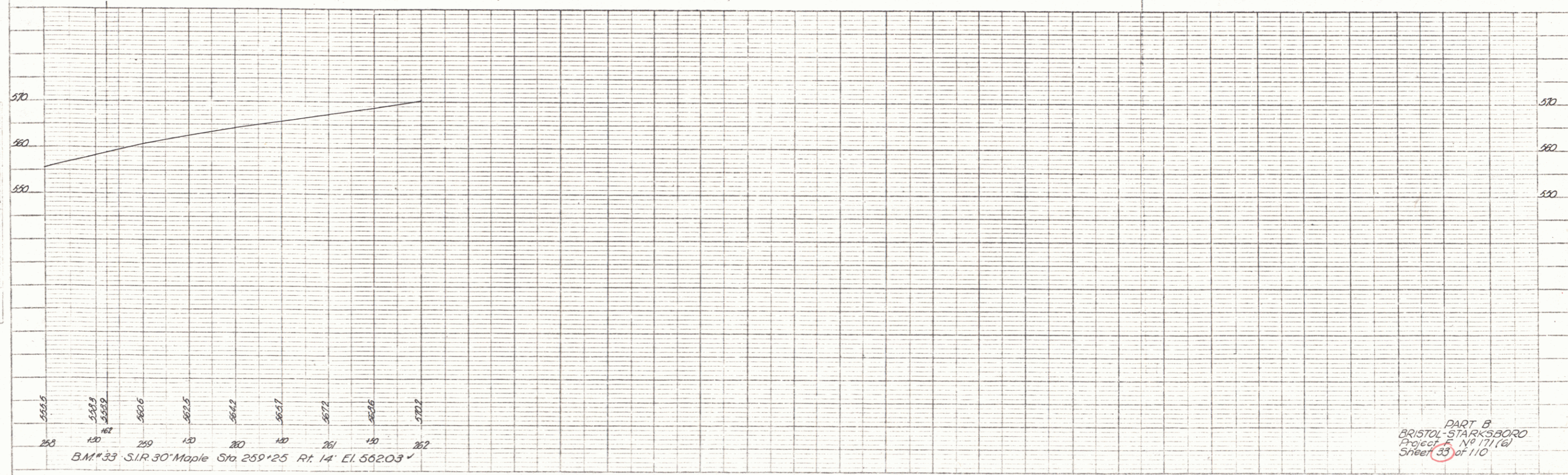
PLATE 1 - PLAN PROFILE & P&R & STATIONS
 BRISTOL-STARKSBORO
 PROJECT No. 171 (6)
 SHEET 32 of 110

PLAN
 DATE: 1/10/67
 DRAWN BY: HUNTER
 CHECKED BY: HUNTER
 SCALE: 1" = 40'



Δ 2' 27" RT
 D 1"
 R 3729.7
 T 122.5
 L 245.0
 E 1.3
 Do Not Bank

BM# 83
 S.I.R. 30' Maple
 Elevation 562.03



PART B
 BRISTOL-STARKSBORO
 Project No. 171(6)
 Sheet 35 of 110

PLATE 1 - PLAN-PROFILE - P. A. A. K. SHANNON
 NEWTON & FRANK CO., NEW YORK
 P. A. A. K. No. 211