

**INDEX OF SHEETS**

SHEET NO. 1	TITLE PAGE
2	TYPICAL CROSS-SECTION OF IMPROVEMENT
3	BANKING AND WIDENING TABLES
4-6	PLAN AND PROFILE
7	S-28 PIPE CULVERTS
8	S-30 GUARD RAIL
9	S-30A STANDARD UNDERDRAIN
10	S-40 BARRICADES SIGNS AND LIGHTS
11	S-41 ROUNDING OF SLOPES
12-23	CROSS SECTIONS

STANDARD STRUCTURE SHEETS APPROVED BY THE CHIEF ENGINEER  
 S-28 APRIL 26, 1941  
 S-30 MAY 12, 1941  
 S-30A APRIL 19, 1941  
 S-40 DEC. 18, 1945

STATE OF VERMONT  
 STATE HIGHWAY DEPARTMENT

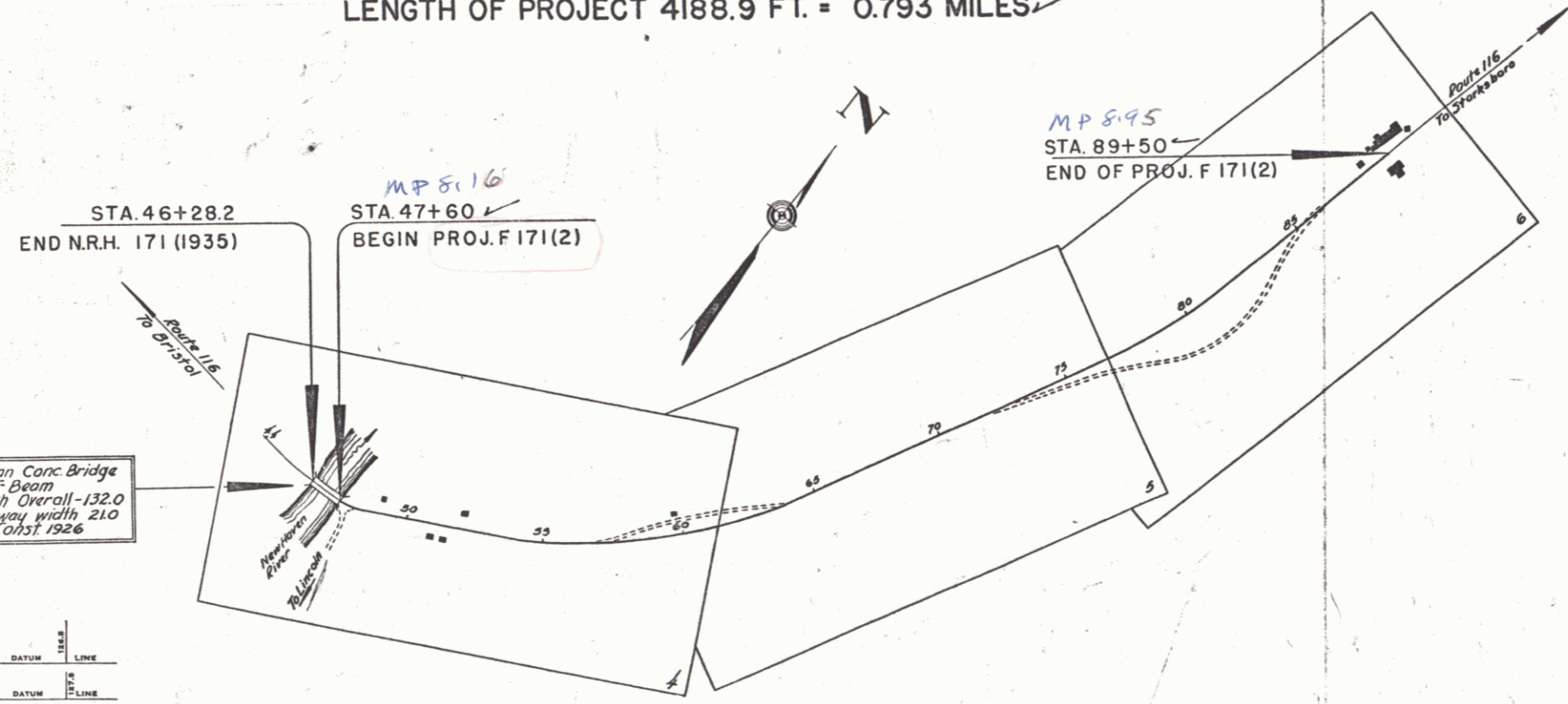
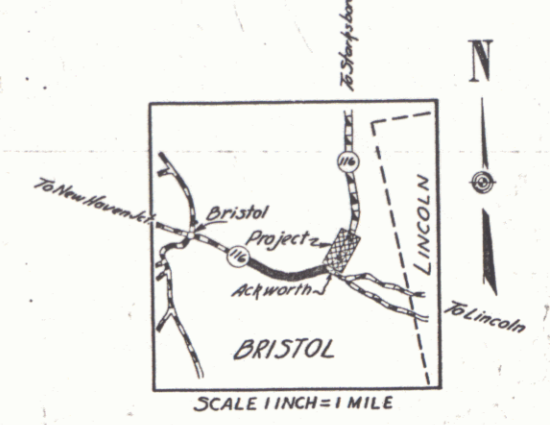
PLAN AND PROFILE OF PROPOSED  
 STATE HIGHWAY

FEDERAL PROJECT  
 TOWN OF BRISTOL

BRISTOL-STARKSBORO ROAD  
 VT. ROUTE 116

BEGINNING AT THE EAST END OF THE BRIDGE OVER THE NEW HAVEN RIVER, AND EXTENDING NORTHEASTERLY 0.793 MILES  
 LENGTH OF PROJECT 4188.9 FT. = 0.793 MILES

FED. ROAD DIST. NO.	STATE	PROJ. NO.	FISCAL YEAR	SHEET NO.	TOTAL SHEETS
9	Vt.	F171(2)	1948	1	23



3 Span Conc Bridge  
 77' Span  
 Length Overall - 132.0  
 Roadway width 210  
 Const. 1926

PROJECT BRISTOL	LENGTH 0.793 MI.
NUMBER 171(2)	YEAR 1948
TYPE (paving, drainage, pipe-line, guard rail and double tuck)	CONTRACTOR Robins & Ing. Co. Inc. No. 2728
cost of Ref. level for with and gravel seal	DATE August 19, 1948
LOCATION at the east end of the bridge over the New Haven River and extending northeasterly 0.793 miles	

GROUND ELEVATION	DATUM	LINE
GRADE ELEVATION	DATUM	LINE

**CURVE DATA**

DEFLECTION ANGLE	Δ
DEGREE OF CURVE	D
RADIUS OF CURVE	R
TANGENT DISTANCE	T
LENGTH OF CURVE	L
EXTERNAL DISTANCE	E
POINT OF INTERSECTION	P. I.
POINT OF CURVE	P. C.
POINT OF TANGENT	P. T.
POINT ON TANGENT	P. O. T.

**SCALES**

TITLE	1" = 300'
TYPICAL	1" = 2'
PLAN	1" = 50'
PROFILE HORIZONTAL	1" = 50'
PROFILE VERTICAL	1" = 10'
CROSS SECTIONS	1" = 5'

RECORD PLANS

Prepared by D.G. Martin Dec. 19, 1948  
 Resident Engineer D.G. Martin

RIGHT-OF-WAY DIVISION  
 TOWN FILE  
 PERPETUAL  
 Town of Utic  
 (To Be Returned To R.O.W. Division)

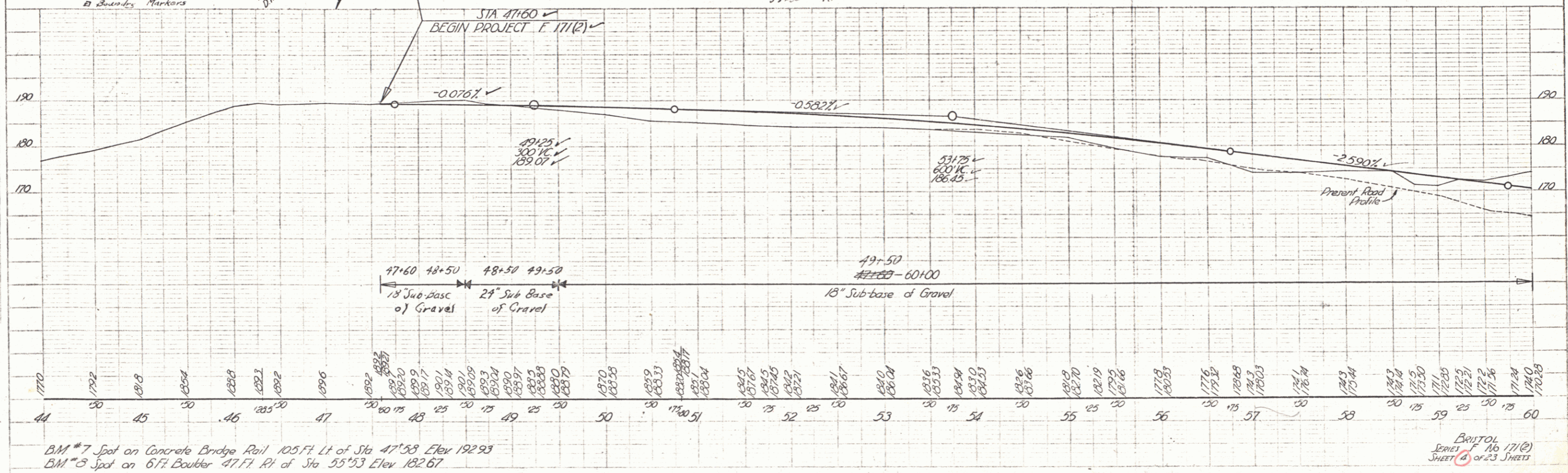
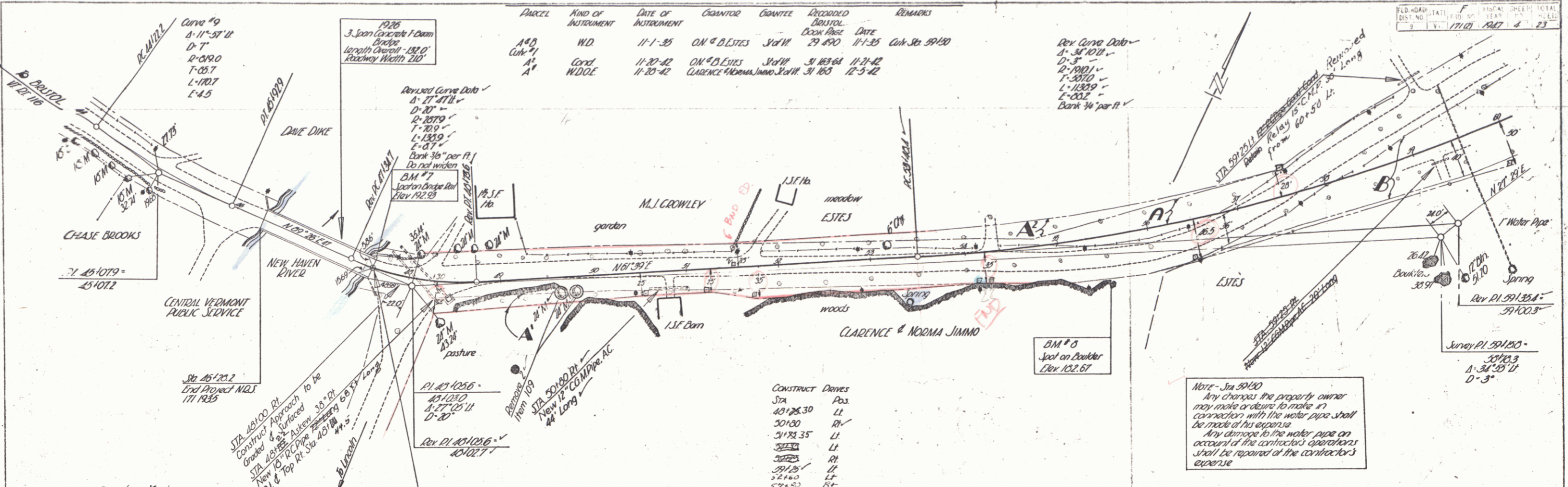
APPROVED: 1 Oct 1948  
H.E. Sargent  
 COMMISSIONER OF HIGHWAYS

SUBMITTED BY ORDER OF THE STATE HIGHWAY BOARD  
Per: 00R494

RECOMMENDED FOR APPROVAL  
 DISTRICT ENGINEER  
 PUBLIC ROADS ADMINISTRATION  
 FEDERAL WORKS AGENCY

THESE PLANS ARE SUBJECT TO SUCH REVISIONS AS MAY BE REQUIRED BY THE PUBLIC ROADS ADMINISTRATION OR THE COMMISSIONER OF HIGHWAYS.  
 CONSTRUCTION IS TO BE CARRIED ON IN ACCORDANCE WITH THE PLANS AND THE STANDARD ROAD AND BRIDGE SPECIFICATIONS OF 1936, AS APPROVED DECEMBER 29TH, 1936 BY THE PUBLIC ROADS ADMINISTRATION, INCLUDING ALL SUBSEQUENT APPROVED REVISIONS AND SUCH REVISED SPECIFICATIONS AND SPECIAL PROVISIONS AS ARE SUBMITTED WITH THE PLANS.

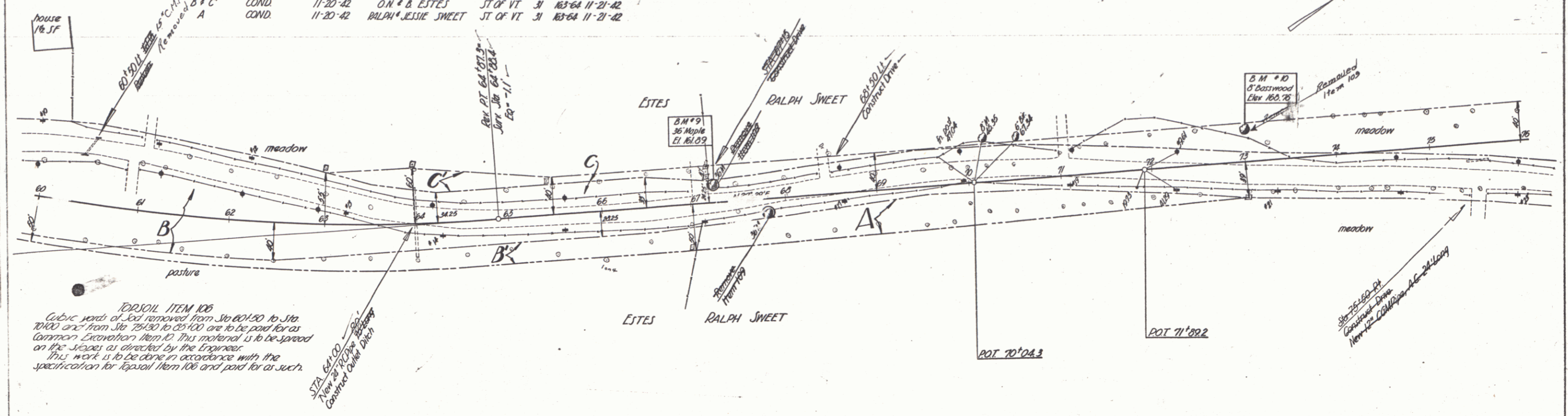
APPROVED <u>Sept 30, 1947</u> <u>H. J. [Signature]</u> HIGHWAY ENGINEER	APPROVED <u>Dec 19, 1948</u> <u>[Signature]</u> DISTRICT HIGHWAY COMMISSIONER	SERIES F No. 171(2) FILED SHEET 1 OF 23
---	---	--



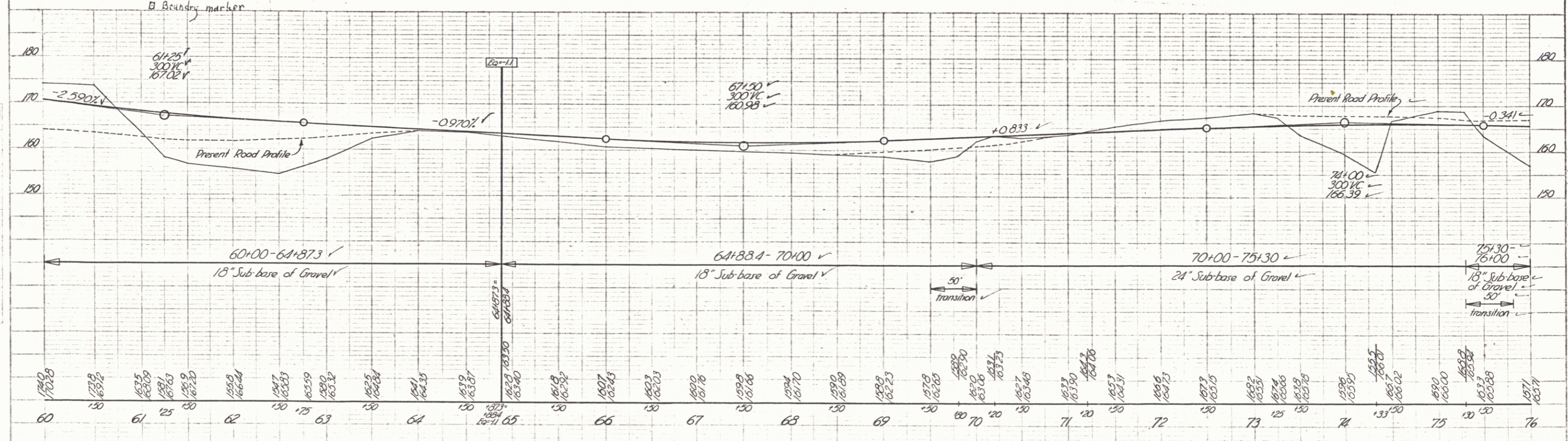
B.M. #7 Spot on Concrete Bridge Rail 105.74 Lt. of Sta 47+58 Elev 192.93  
 B.M. #3 Spot on 6" Ft. Boulter 47.71 Rt. of Sta 55+53 Elev 182.67

BRITOL  
 SERIES F 16 171(2)  
 SHEET 6 OF 23 SHEETS

PARCEL	KIND OF INSTRUMENT	DATE OF INSTRUMENT	GRANTOR	GRANTEE	RECORDED BRISTOL	REMARKS
B & C	W. D.	11-1-35	O.M. & B. ESTES	ST. OF VT.	29	1930 11-1-35
D & C	COND.	11-20-42	O.M. & B. ESTES	ST. OF VT.	31	1936 11-21-42
A	COND.	11-20-42	RALPH & JESSIE SWEET	ST. OF VT.	31	1936 11-21-42

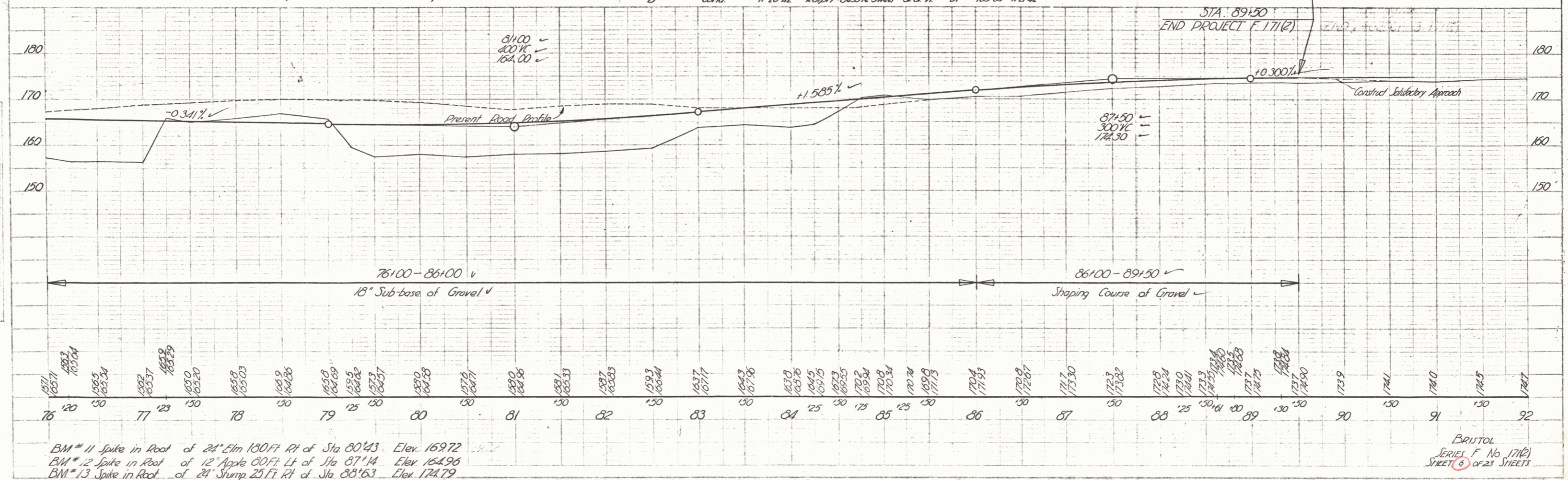
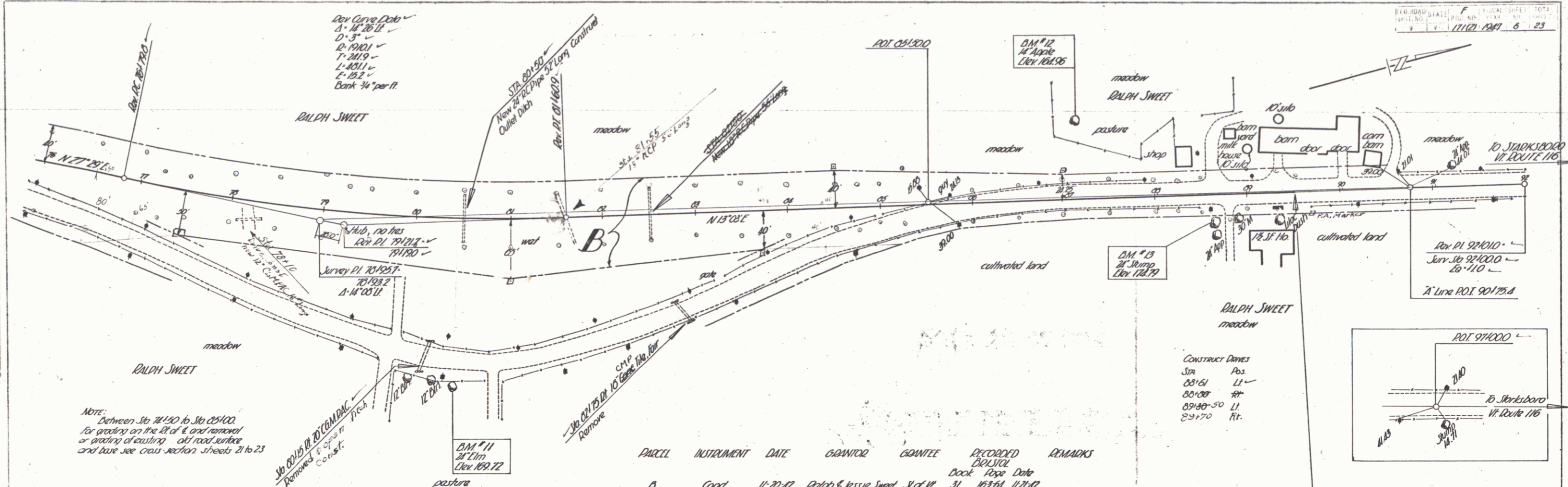


**TOPSOIL ITEM 106**  
 Cubic yards of soil removed from Sta 60+50 to Sta 70+00 are to be paid for as Common Excavation Item 10. This material is to be spread on the slopes as directed by the Engineer. This work is to be done in accordance with the specification for Topsoil Item 106 and paid for as such.



BM #9 Spike in Root of 36" Maple 14 Ft. Lt. of Sta 67+25 Elev 161.09  
 BM #10 Spike in Root of 8" Basswood 29 Ft. Lt. of Sta 73+00 Elev 168.76

BRISTOL  
 SERIES F No. 171(2)  
 SHEET 5 OF 23 SHEETS



BM # 11 Spike in Root of 24" Elm 180 FT RI of Sta 80+43 Elev. 169.72  
 BM # 12 Spike in Root of 12" Apple COFF Lt of Sta 87+14 Elev. 164.96  
 BM # 13 Spike in Root of 24" Stump 25 FT RI of Sta 88+63 Elev. 174.79

BRUTAL  
 SERIAL F No 171(2)  
 SHEET 6 OF 23 SHEETS