

INDEX OF SHEETS

SHEET NO. 1	TITLE PAGE
2	TYPICAL CROSS-SECTION OF IMPROVEMENT
3	BANKING AND WIDENING TABLES
4-6	PLAN AND PROFILE
7	S-28 PIPE CULVERTS
8	S-30 GUARD RAIL
9	S-30A STANDARD UNDERDRAIN
10	S-40 BARRICADES SIGNS AND LIGHTS
11	S-41 ROUNDING OF SLOPES
12-23	CROSS SECTIONS

STANDARD STRUCTURE SHEETS APPROVED BY THE CHIEF ENGINEER
 S-28 APRIL 26, 1941
 S-30 MAY 12, 1941
 S-30A APRIL 19, 1941
 S-40 DEC. 18, 1945

STATE OF VERMONT
 STATE HIGHWAY DEPARTMENT

PLAN AND PROFILE OF PROPOSED
 STATE HIGHWAY

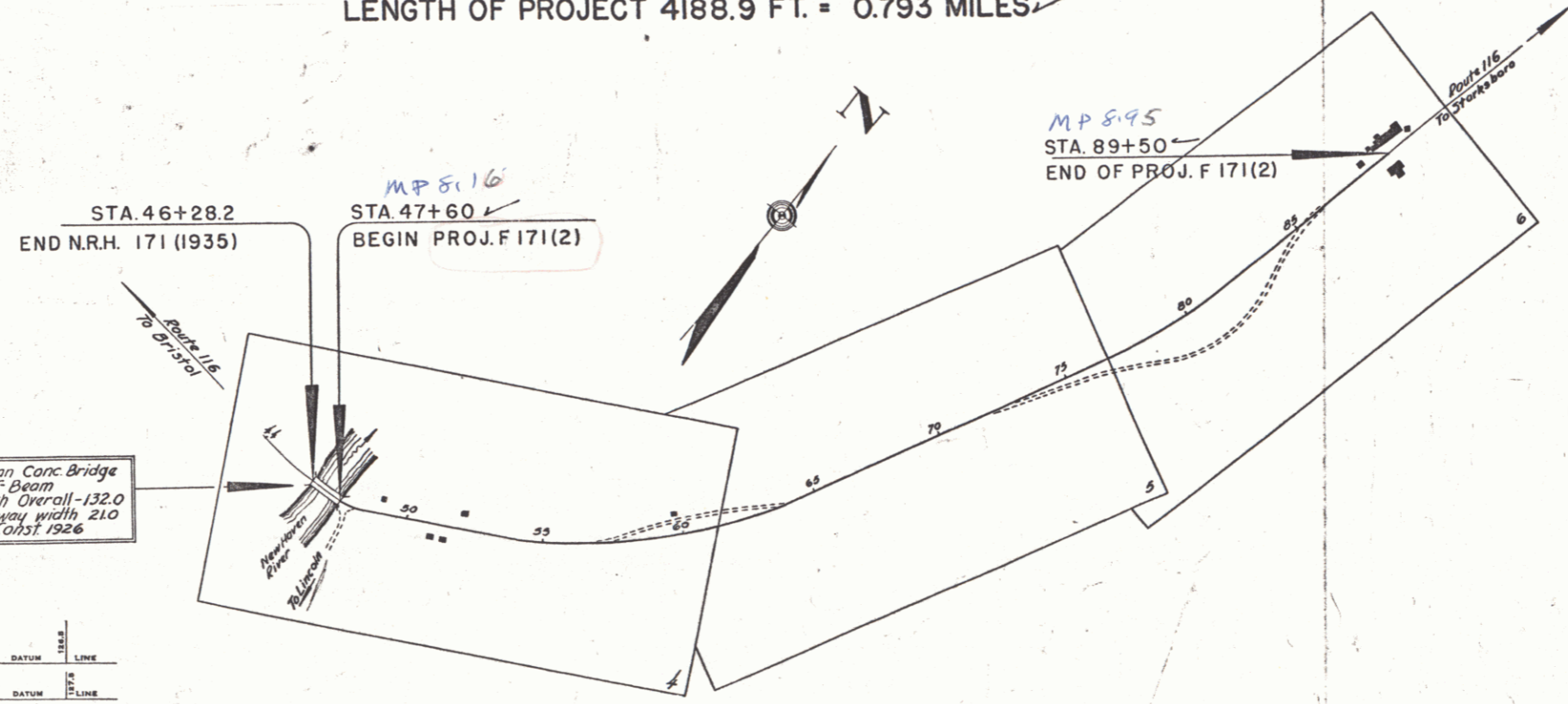
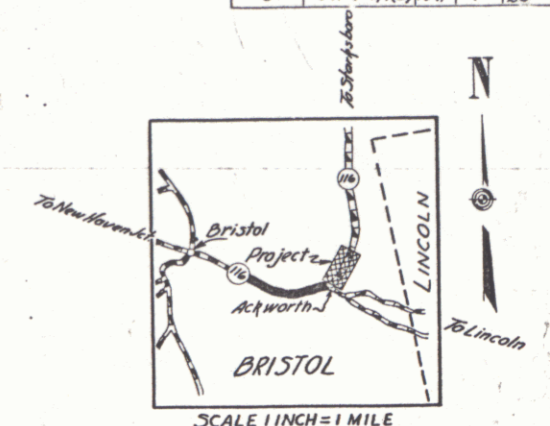
TOWN OF BRISTOL

BRISTOL-STARKSBORO ROAD
 VT. ROUTE 116

BEGINNING AT THE EAST END OF THE BRIDGE OVER THE NEW HAVEN RIVER, AND EXTENDING NORTHEASTERLY 0.793 MILES

LENGTH OF PROJECT 4188.9 FT. = 0.793 MILES

FED. ROAD DIST. NO.	STATE	PROJ. NO.	FISCAL YEAR	SHEET NO.	TOTAL SHEETS
9	Vt.	F171(2)	1948	1	23



3 Span Conc Bridge
 7' Beam
 Length Overall - 132.0
 Roadway width 210
 Const. 1926

PROJECT BRISTOL
 NUMBER 171(2)
 LENGTH 0.793 MI.
 TYPE (paving, drainage, sub-base, guard rail and double tuck coat of refined tar with sand and gravel seal)
 CONTRACTOR Robins & Ingalls
 YEAR 1948
 DRAWN August 19, 1948
 CHECKED August 19, 1948
 LOCATION at the east end of the bridge over the New Haven River and extending northeasterly 0.793 miles

GROUND ELEVATION	DATUM	LINE
GRADE ELEVATION	DATUM	LINE

CURVE DATA

DEFLECTION ANGLE	Δ
DEGREE OF CURVE	D
RADIUS OF CURVE	R
TANGENT DISTANCE	T
LENGTH OF CURVE	L
EXTERNAL DISTANCE	E
POINT OF INTERSECTION	P. I.
POINT OF CURVE	P. C.
POINT OF TANGENT	P. T.
POINT ON TANGENT	P. O. T.

SCALES

TITLE	1" = 300'
TYPICAL	1" = 2'
PLAN	1" = 50'
PROFILE HORIZONTAL	1" = 50'
PROFILE VERTICAL	1" = 10'
CROSS SECTIONS	1" = 5'

RECORD PLANS

Prepared by D.G. Martin Dec. 19, 1948
 Resident Engineer D.G. Martin

RIGHT-OF-WAY DIVISION
 TOWN FILE
 PERPETUAL
 Town of Uti (b)
 (To Be Returned To R.O.W. Division)

APPROVED: 1 Oct 1948
 H.E. Sargent
 COMMISSIONER OF HIGHWAYS

SUBMITTED BY ORDER OF THE STATE HIGHWAY BOARD
 PERM: 00R494

RECOMMENDED FOR APPROVAL
 DISTRICT ENGINEER
 PUBLIC ROADS ADMINISTRATION
 FEDERAL WORKS AGENCY

THESE PLANS ARE SUBJECT TO SUCH REVISIONS AS MAY BE REQUIRED BY THE PUBLIC ROADS ADMINISTRATION OR THE COMMISSIONER OF HIGHWAYS.
 CONSTRUCTION IS TO BE CARRIED ON IN ACCORDANCE WITH THE PLANS AND THE STANDARD ROAD AND BRIDGE SPECIFICATIONS OF 1936, AS APPROVED DECEMBER 29TH, 1936 BY THE PUBLIC ROADS ADMINISTRATION, INCLUDING ALL SUBSEQUENT APPROVED REVISIONS AND SUCH REVISED SPECIFICATIONS AND SPECIAL PROVISIONS AS ARE SUBMITTED WITH THE PLANS.

APPROVED Sept 30, 1947 H. J. [Signature] HIGHWAY ENGINEER	APPROVED Dec 19, 1948 H. E. Sargent DISTRICT HIGHWAY COMMISSIONER	SERIES F No. 171(2) FILED SHEET 1 OF 23
---	---	--