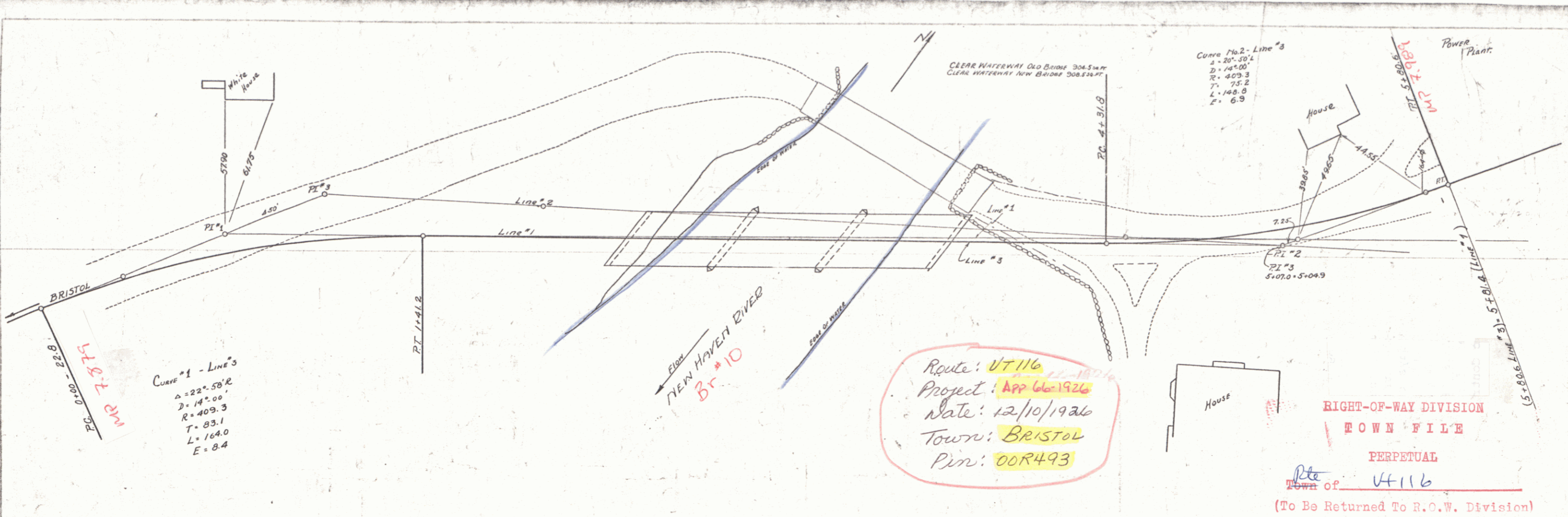


PLAN
 M. P. TRACKER
 H. P. BARNHARTT
 11-27-26
 17-20-26

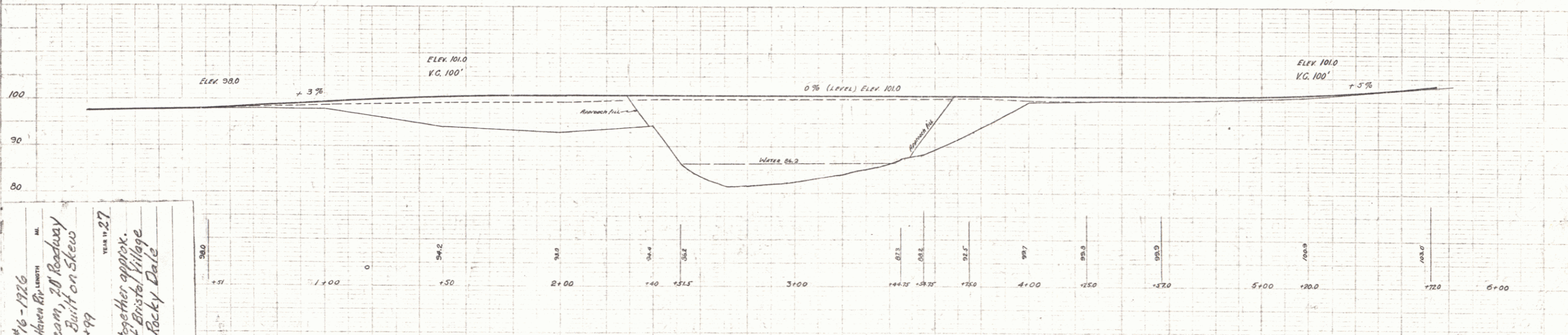


Curve #1 - Line #3
 $\Delta = 22^\circ 58' R$
 $D = 14^\circ 00'$
 $R = 409.3$
 $T = 83.1$
 $L = 164.0$
 $E = 8.4$

Curve #2 - Line #3
 $\Delta = 20^\circ 30' L$
 $D = 14^\circ 00'$
 $R = 409.3$
 $T = 75.2$
 $L = 148.8$
 $E = 6.3$

Route: VT 116
 Project: APP 66-1926
 Date: 12/10/1926
 Town: BRISTOL
 Pin: 00R493

RIGHT-OF-WAY DIVISION
 TOWN FILE
 PERPETUAL
 Rte. VT 116
 (To Be Returned To R.O.W. Division)



PROJECT: Bristol App. #16-1926
 NUMBER: VT 116, 810 over New Haven Rv. Length
 TYPE: 3-span Conc. T-Beam, 20' Roadway
 140' overall, Bridge Built on Skew
 CONTRACTOR: 109 Sta 418+99
 YEAR: 1927
 LOCATION: On VT 116 & VT 97 together approx.
 0.69 miles north of Bristol Village
 line. Called 1st Rocky Dale
 Bridge

Shop West of Bridge Elev. 100.

APPROVED May 7-1927

H. E. Sargent
 CHIEF ENGINEER

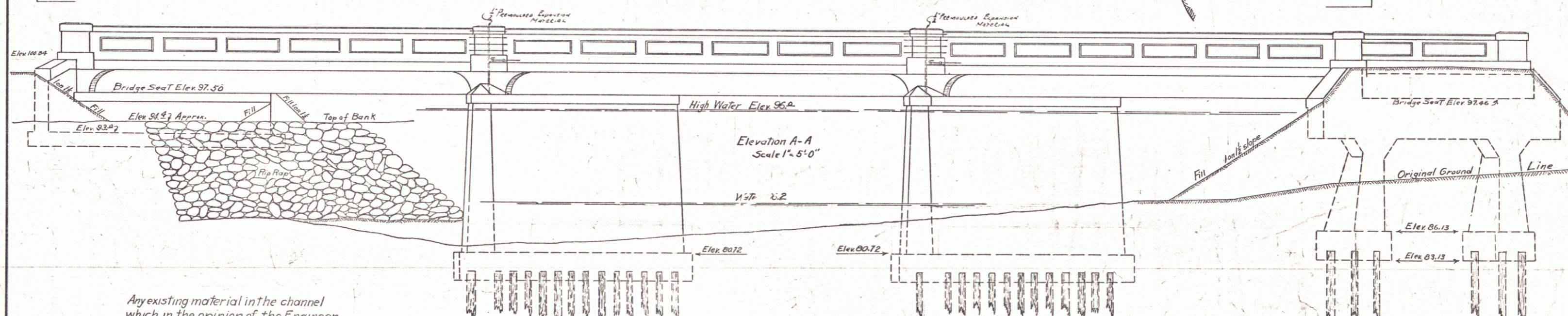
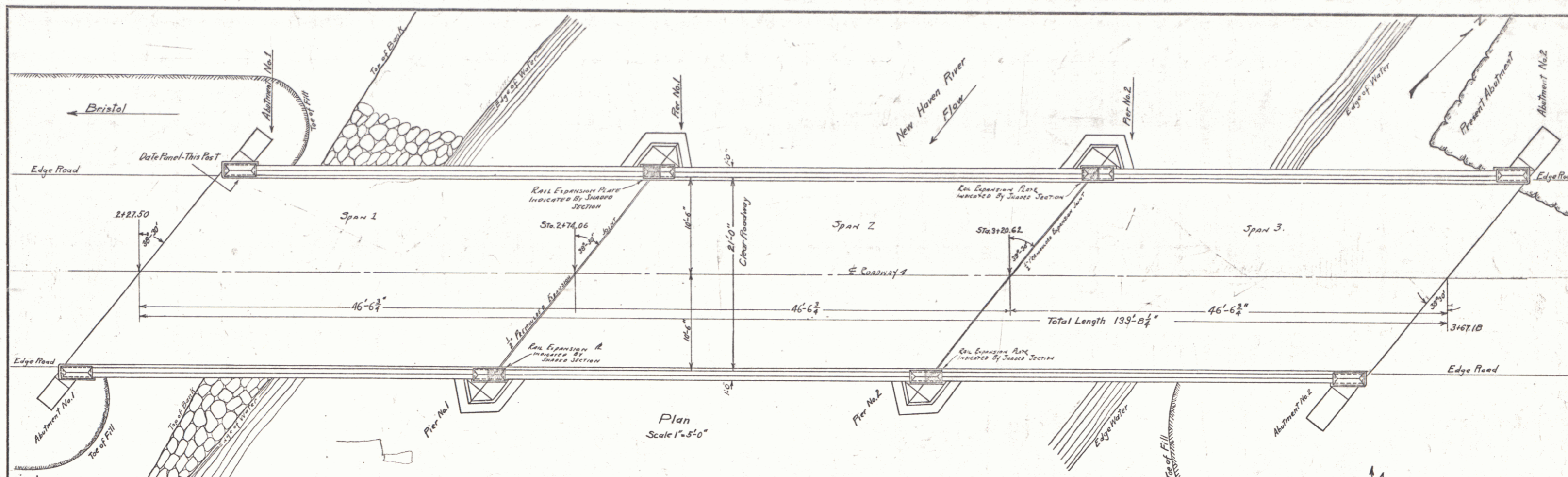
VT 116, 810 over New Haven RIVER
 1ST ROCKY DALE BRIDGE

BRISTOL, VT.

SCALE (HOR. 1"=20' VERT. 1"=10') DEC. 13, 1926.

App #66-1926

SHEET 2 of 2



Any existing material in the channel which, in the opinion of the Engineer, will interfere with the free flow of the water shall be excavated to lines and elevations as determined by the Engineer.

All work and material shall conform to the Standard Road and Bridge Specifications of the Vermont Department of Highways, 1926

SUMMARY OF ESTIMATED QUANTITIES FOR BRIDGE

Structure	Structure Excavation Cu. Yds.	1-2-4 Concrete Cu. Yds.	1-2 1/2-5 Concrete Cu. Yds.	Reinforcing Steel Lbs.	Rip Rap for Bank Protection Cu. Yds.	Single Bitumens Surface Treatment Sq. Yds.	Wooden Piles Lin. Ft.
SUBSTRUCTURE		216.4		2318		313	
Abutment No. 1	21		22	298	15		
Abutment No. 2	3.1	13.4	14.8	2017		250	
Piers 1 and 2	10.7		186	456		1400	
TOTALS	16.6	229.8	222.8	57299	15	313	1650

1ST ROCKY DALE BRIDGE
BRISTOL, VT.

Surveyed by M. M. Stocker
Designed by H. P. Redigan
Drawn by R. R. P.
Traced by C. D. L.
Checked by *[Signature]*
Series No. 44-27
April-1926 Sheet 2 of 9 Sheets