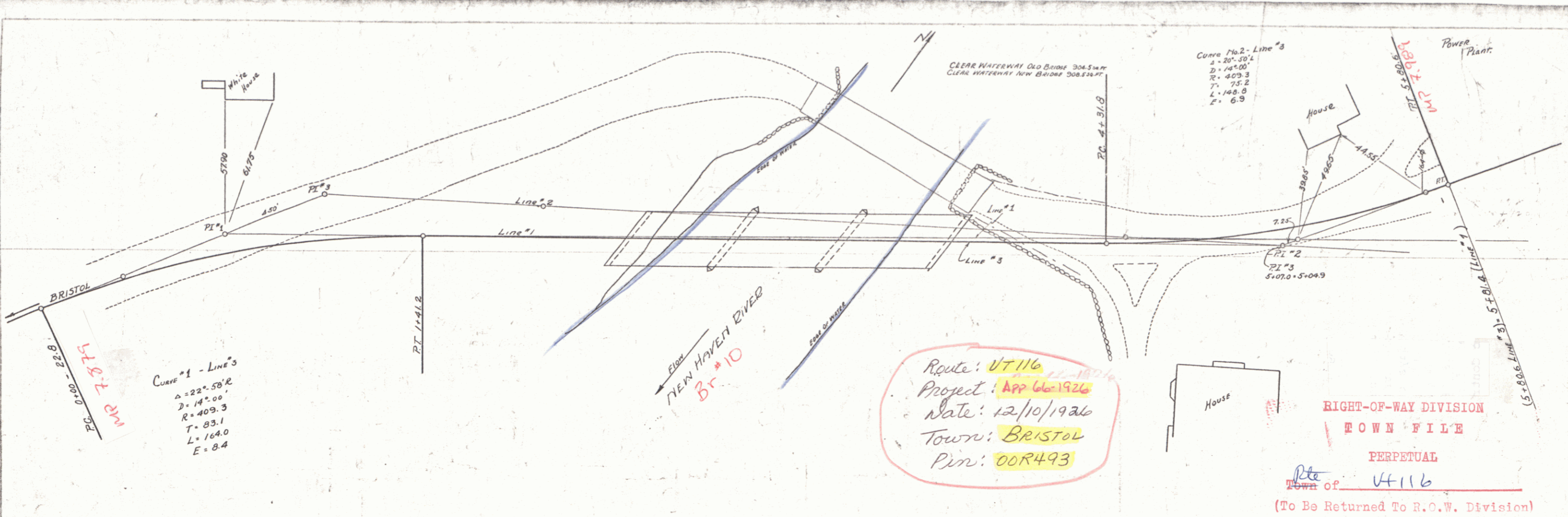


PLAN
 M. P. TRACKER
 H. P. BARNHARTT
 11-27-26
 17-20-26

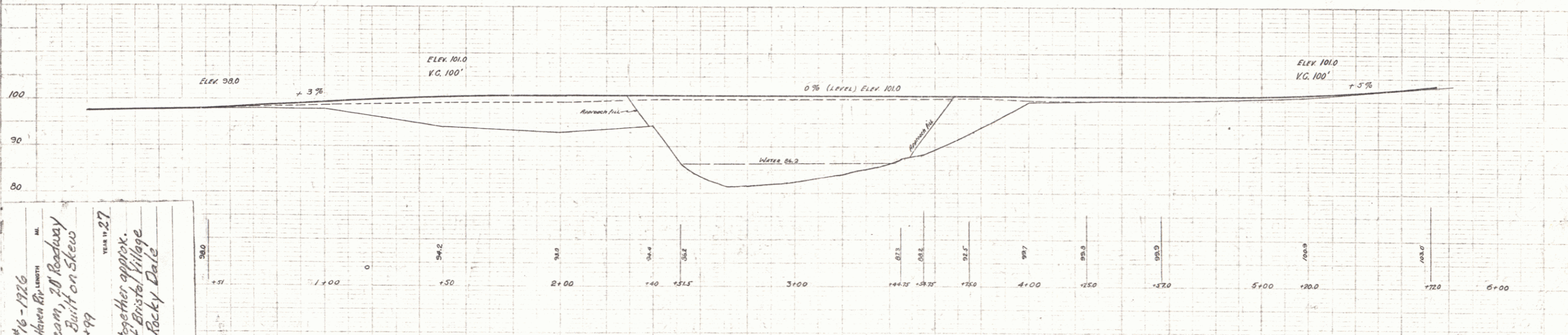


Curve #1 - Line #3
 $\Delta = 22^\circ 58' R$
 $D = 14^\circ 00'$
 $R = 409.3$
 $T = 83.1$
 $L = 164.0$
 $E = 8.4$

Curve #2 - Line #3
 $\Delta = 20^\circ 30' L$
 $D = 14^\circ 00'$
 $R = 409.3$
 $T = 75.2$
 $L = 148.8$
 $E = 6.3$

Route: VT 116
 Project: App 66-1926
 Date: 12/10/1926
 Town: BRISTOL
 Pin: 00R493

RIGHT-OF-WAY DIVISION
 TOWN FILE
 PERPETUAL
 Rte
 Town of VT 116
 (To Be Returned To R.O.W. Division)



PROJECT: Bristol App. #16-1926
 NUMBER: VT 116, 810 over New Haven Rv. Length
 TYPE: 3-span Conc. T-Beam, 20' Roadway
 140' overall, Bridge Built on Skew
 CONTRACTOR: 109 Sta 418+99
 YEAR: 1927
 LOCATION: On VT 116 & VT 97 together approx.
 0.69 miles north of Bristol Village
 line. Called 1st Rocky Dale
 Bridge

APPROVED May 7-1927

H. E. Sargent
 CHIEF ENGINEER

VT 10510 (W. 11) over New Haven River
 1ST ROCKY DALE BRIDGE

BRISTOL, VT.

SCALE (HOR. 1"=20' VERT. 1"=10') DEC. 10, 1926.

App #66-1926

SHEET 2 of 2

M