

INDEX OF SHEETS

SHEET NO. 1	TITLE PAGE	
2	TYPICAL CROSS-SECTION OF IMPROVEMENT	GRAVEL MIXED IN PLACE SURFACE COURSE
3	BANKING AND WIDENING TABLES	SURFACE COURSE
4-6	PLAN AND PROFILE SHEETS	
7	STANDARD STRUCTURE SHEET 5-28	PIRE CULVERTS
8		5-30 SINGLED 24"24"
9		5-31 BRIDGE/RAILS, SIGNS AND LIGHTS
10-22	CROSS SECTIONS	

Standard sheet 5-28 approved by the Chief Engineer on July 11, 1933.
Standard sheet 5-30 approved by the Chief Engineer on Aug. 15, 1933.

FED. ROAD DIST. NO.	STATE	PROJECT NO.	FISCAL YEAR	SHEET NO.	TOTAL SHEETS
9	VT.	6889	1935	1	22

**STATE OF VERMONT
STATE HIGHWAY DEPARTMENT**

**PLAN AND PROFILE OF PROPOSED
STATE HIGHWAY**

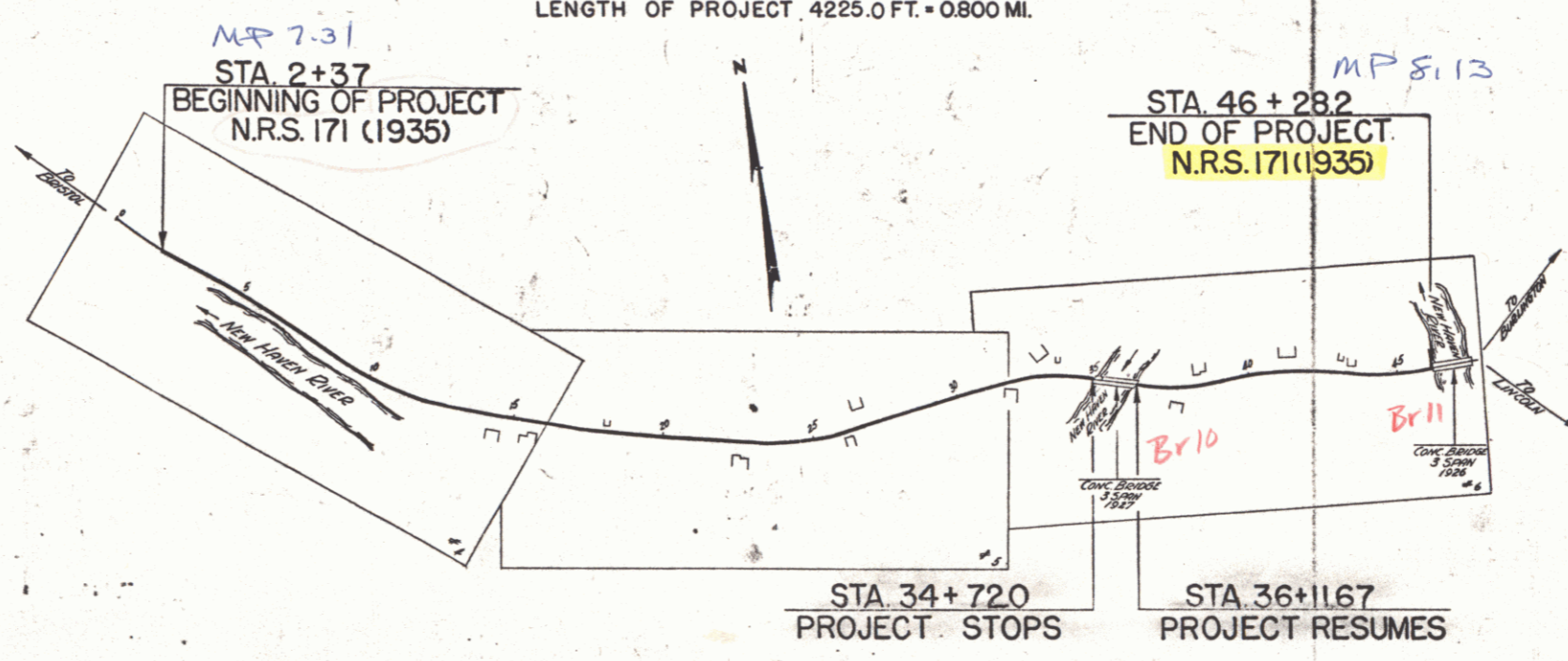
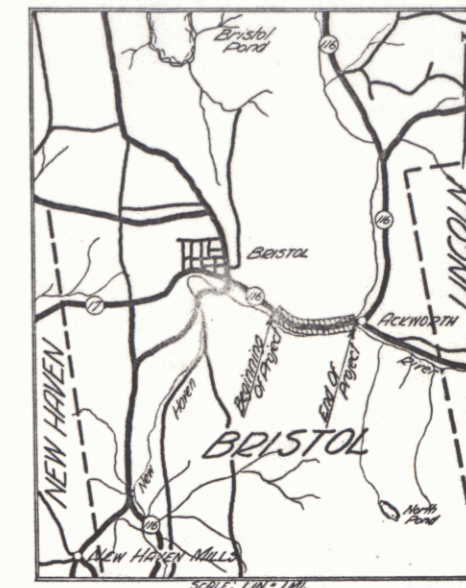
NATIONAL RECOVERY SECONDARY PROJECT

TOWN OF BRISTOL

BRISTOL-LINCOLN ROAD

FROM A POINT 1400 FT. WEST OF THE RESIDENCE OF FRANK LEE, EASTERLY 0.800 MI. TO THE 2ND. CONC. BRIDGE OVER THE NEW HAVEN RIVER

LENGTH OF PROJECT, 4225.0 FT. • 0.800 MI.



RECORD PLANS

SEPT. 3, 1935

RIGHT-OF-WAY DIVISION
TOWN FILE
PERPETUAL
Town of 4116
(To Be Returned To R.O.W. Division)

APPROVED: NOVEMBER 25, 1935
H. E. [Signature]
COMMISSIONER
SUBMITTED BY ORDER OF THE STATE HIGHWAY DEPARTMENT

NOTES: ANY FURTHER INFORMATION CONCERNING QUANTITIES, ACCOUNTS OR COSTS RELATIVE TO THIS PROJECT MAY BE OBTAINED EITHER THE FIELD ENGINEER OR THE TOWN FILE.

RECOMMENDED: [Signature]
DISTRICT ENGINEER BUREAU OF PUBLIC WORKS
RECOMMENDED FOR APPROVAL: [Signature]
CHIEF ENGINEER BUREAU OF PUBLIC WORKS
APPROVED: [Signature]
DIRECTOR - BUREAU OF PUBLIC WORKS

Route: VT 116
Proj. No. 00R491

These plans are subject to such revisions as may be required by the Bureau of Public Roads and the Commissioner of Highways. Construction is to be carried on in accordance with the plans and Standard Road and Bridge Specifications of 1930 including all subsequent approved revisions, the National Recovery Act Special Provisions and such revised specifications and special provisions as are submitted with the plans.

SCALES

TITLE	1" = 500'
PLAN	1" = 50'
PROFILE	1" = 10'
CROSS SECTIONS	1" = 5'

CONVENTIONAL SIGNS

COUNTY LINE	GROUND ELEVATION	
TOWN LINE	GRADE ELEVATION	
FENCE LINE		
STONE WALL		
UNFENCED PROPERTY		
GUARD RAIL		
TRAVELED WAY		
RAILROAD		
RETAINING WALL		
CENTER LINE		
SURVEY LINE		
CULVERT		

CURVE DATA

RECORD IN AID	DEFLECTION ANGLE	Δ
CORNER, M. DE GROOT	DEGREE OF CURVE	D.
1935	RADIUS OF CURVE	R.
FISCAL YEAR	TANGENT DISTANCE	T.
1935	LENGTH OF CURVE	L.
	EXTERNAL DISTANCE	E.
	POINT OF INTERSECTION	P. I.
	POINT OF CURVE	P. C.
	POINT OF TANGENT	P. T.
	POINT ON TANGENT	P. O. T.

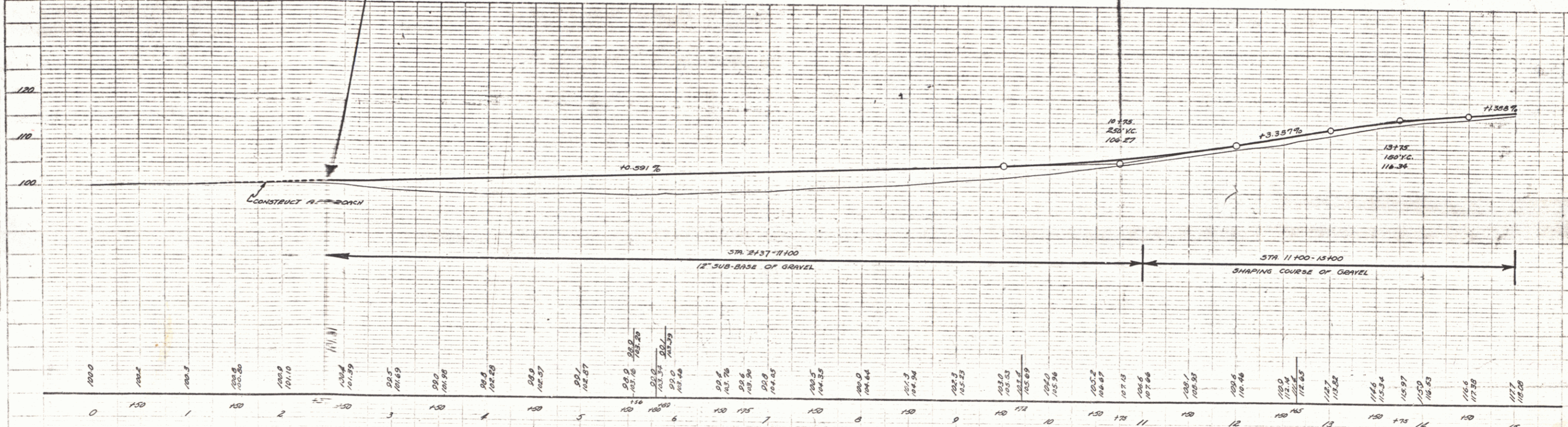
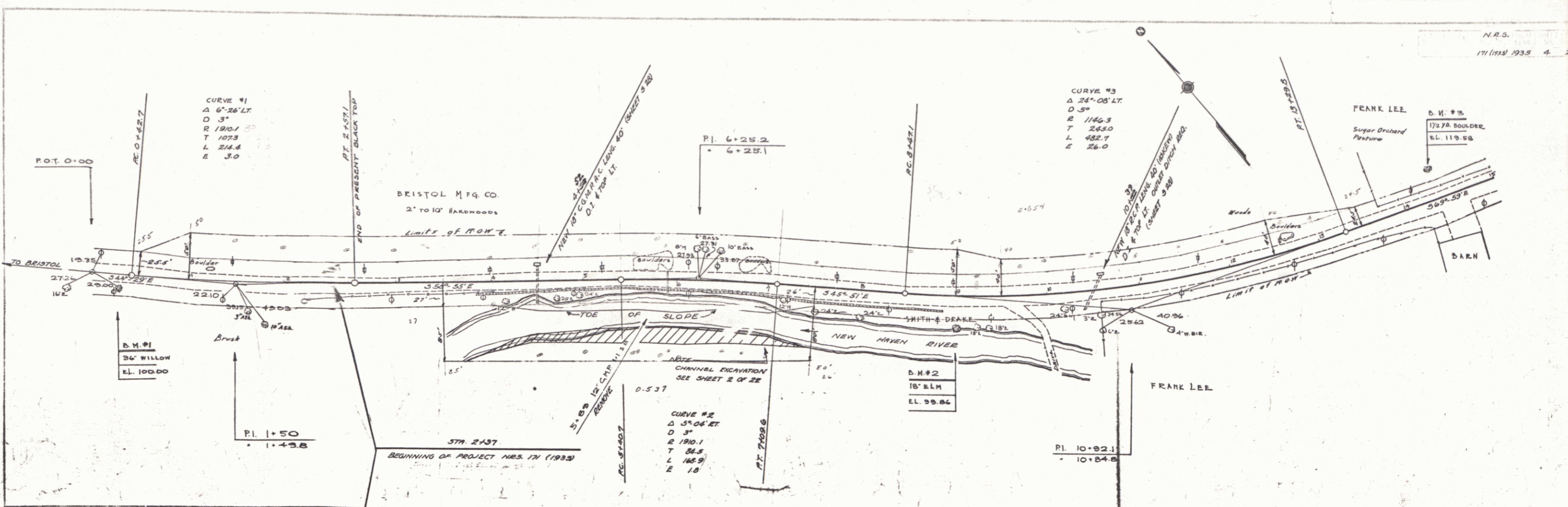
Bristol - 1935
Yt. #116
Project N.R.S. 171 (1935)

APPROVED: [Signature] AUG 24 1934
SERIES NO. 11182-FIL
SHEET 1 OF 22

DIST. # 5 PLANS 1

FARENGTON 3/24
D. MACCHI 9/34

NOTE: THIS SHEET IS A PART OF A PROJECT AND SHOULD BE READ IN CONNECTION WITH THE OTHER SHEETS OF THE PROJECT.



B.M.#1	SPIKE IN ROOT OF 36' WILLOW	RT	13	STA 0+25	EL. 100.00
B.M.#2	18' ELM	RT	33	STA 8+99	EL. 99.86
B.M.#3	MARK ON 1/2 YARD BOULDER	LT	35	STA 14+35	EL. 119.58

SERIES N. 62, NO. 171 (1933)
SHEET 11 OF 22

