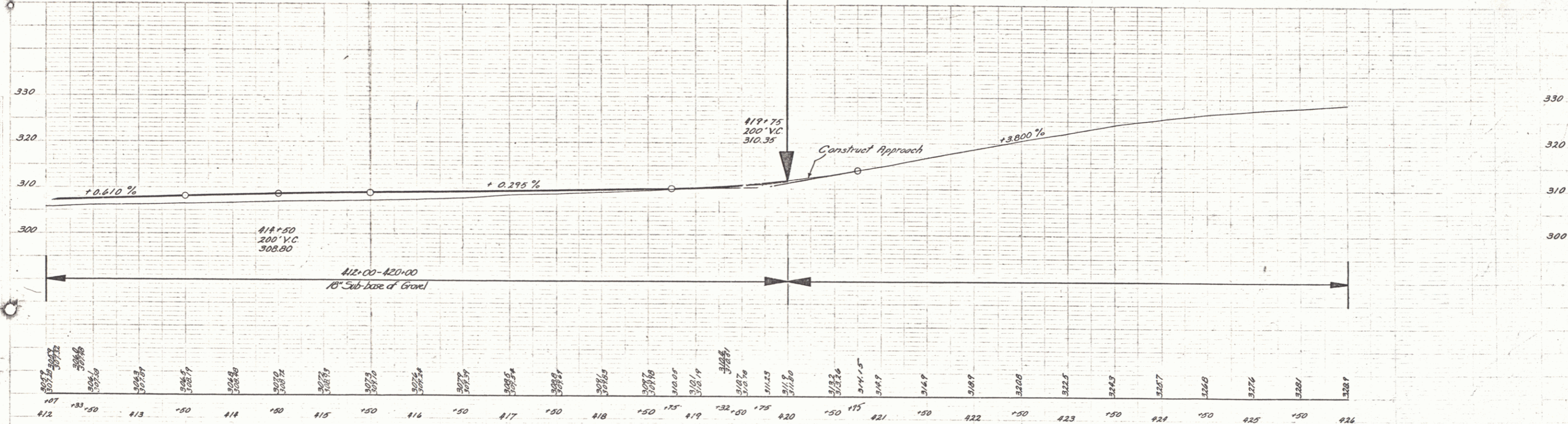
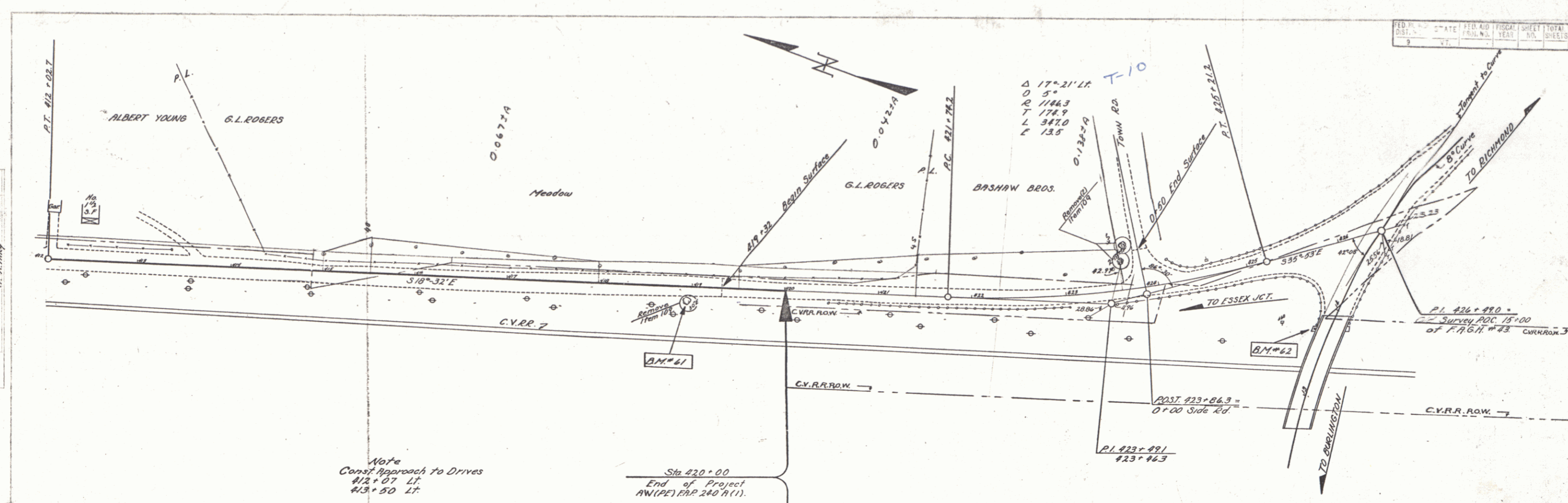


DIST.	DATE	PERIOD	FISCAL YEAR	SHEET NO.	TOTAL SHEETS
9	VT.				



B.M.#61 S.I.R. 30" Elm 115 ft. Rt. Sta 418+95 Elev. 311.69  
 B.M.#62 Spot on Wing 165 ft. Lt. Sta 13+75 (Old Survey F.A.G.N.#43) Elev. 330.11