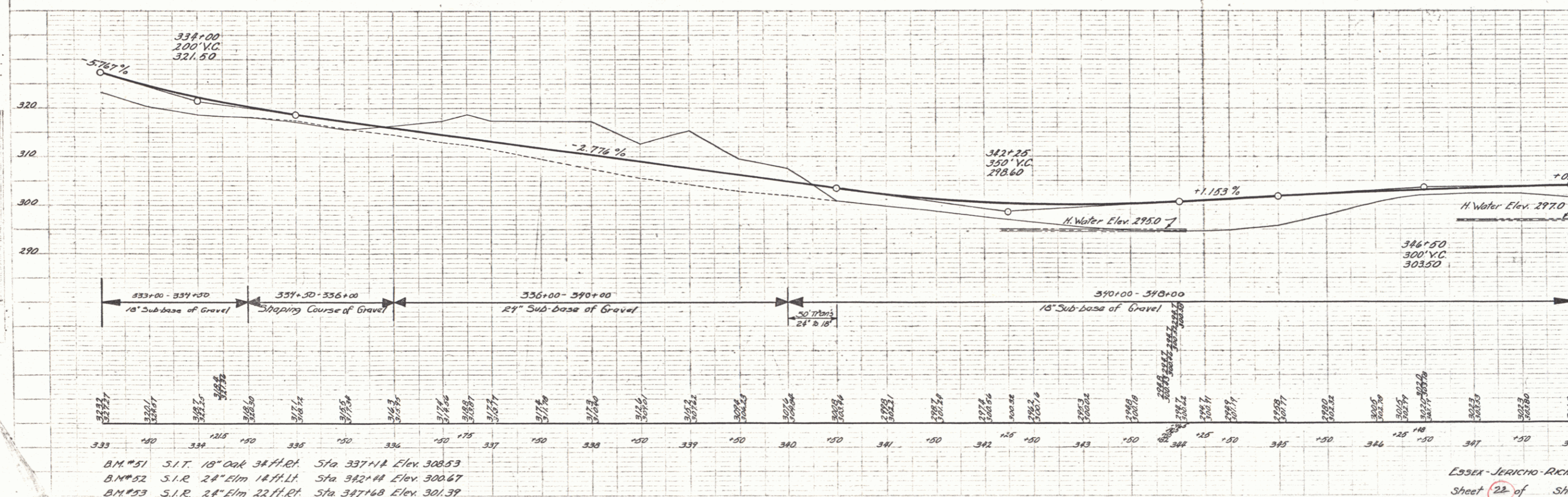
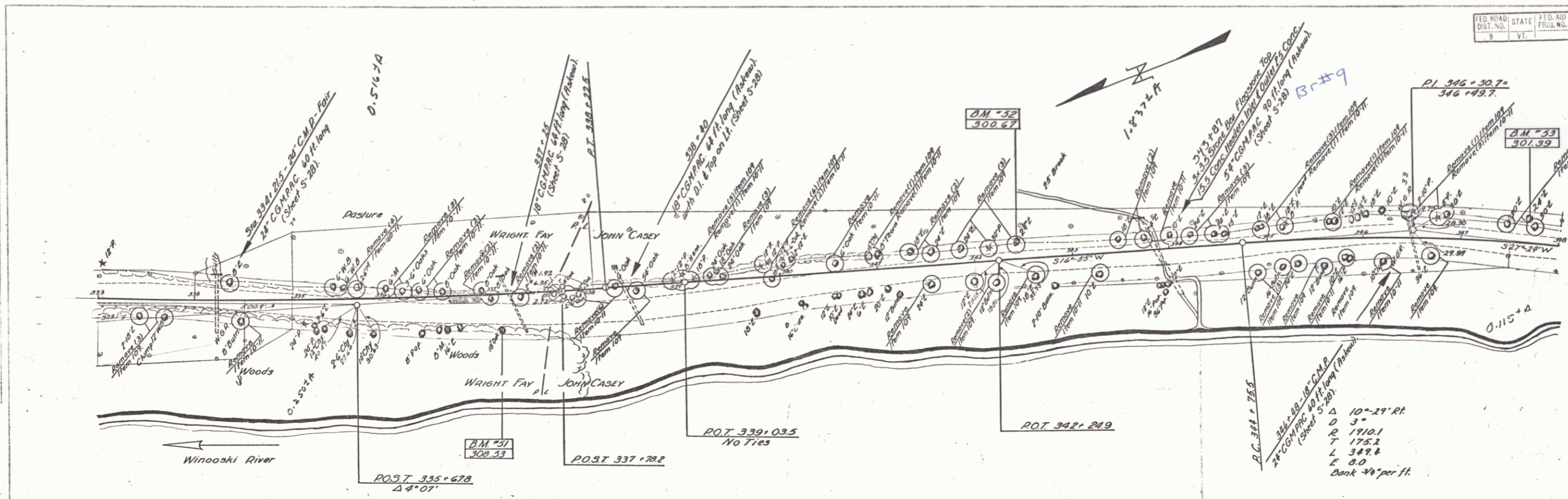


FED. ROAD DIST. NO.	STATE	FED. AID PROJ. NO.	FISCAL YEAR	SHEET NO.	TOTAL SHEETS
9	Vt.				



B.M. #51 S.I.R. 18" Oak 34' H. Rt. Sta 337+14 Elev. 308.53
 B.M. #52 S.I.R. 24" Elm 18' H. Lt. Sta 342+14 Elev. 300.67
 B.M. #53 S.I.R. 24" Elm 22' H. Rt. Sta 347+68 Elev. 301.39

Essex-Jericho-Richmond
 Sheet 22 of 22