

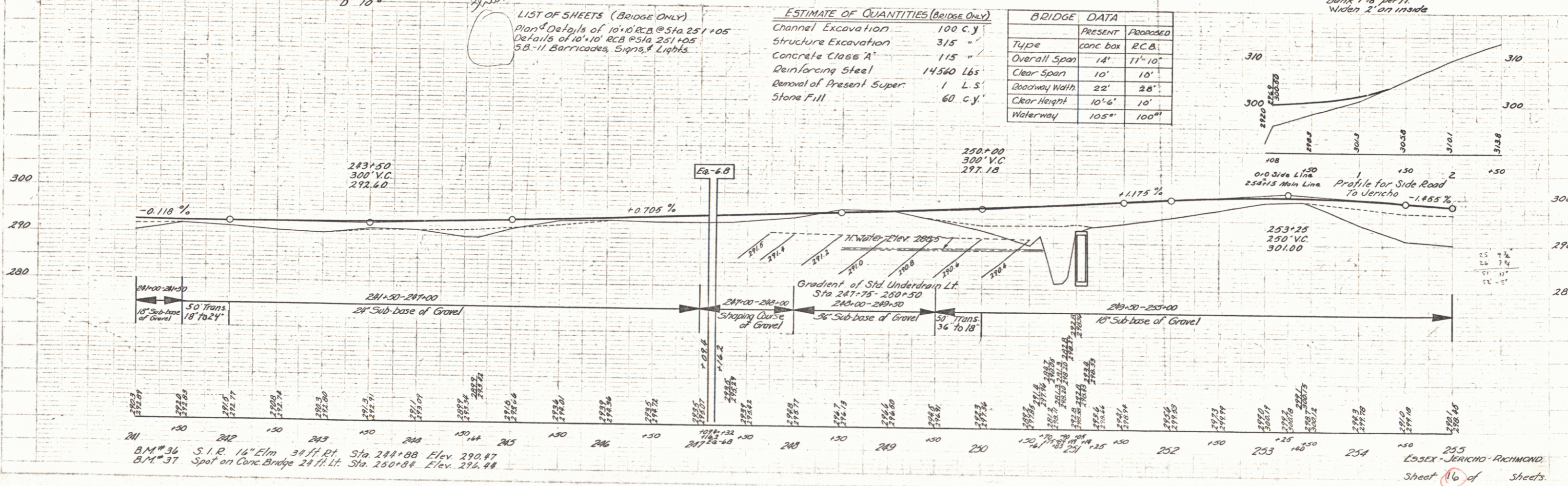
LIST OF SHEETS (BRIDGE ONLY)
 Plan & Details of 10'x10' R.C.B. @ Sta. 251+05
 Details of 10'x10' R.C.B. @ Sta. 251+05
 5B-11 Barricades, Signs, & Lights.

ESTIMATE OF QUANTITIES (BRIDGE ONLY)

| | |
|--------------------------|------------|
| Channel Excavation | 100 C.Y. |
| Structure Excavation | 315 " |
| Concrete Class 'A' | 115 " |
| Reinforcing Steel | 14560 Lbs. |
| Removal of Present Super | 1 L.S. |
| Stone Fill | 60 C.Y. |

BRIDGE DATA

| Type | PRESENT | PROPOSED |
|---------------|---------|----------|
| Overall Span | 14' | 11'-10" |
| Clear Span | 10' | 10' |
| Roadway Width | 22' | 26' |
| Clear Height | 10'-6" | 10' |
| Waterway | 105' | 100' |



BM # 36 S.I.R. 16" Elm 34 ft Pt. Sta. 244+98 Elev. 290.87
 BM # 37 Spot on Conc. Bridge 24 ft Lt. Sta. 250+84 Elev. 296.48