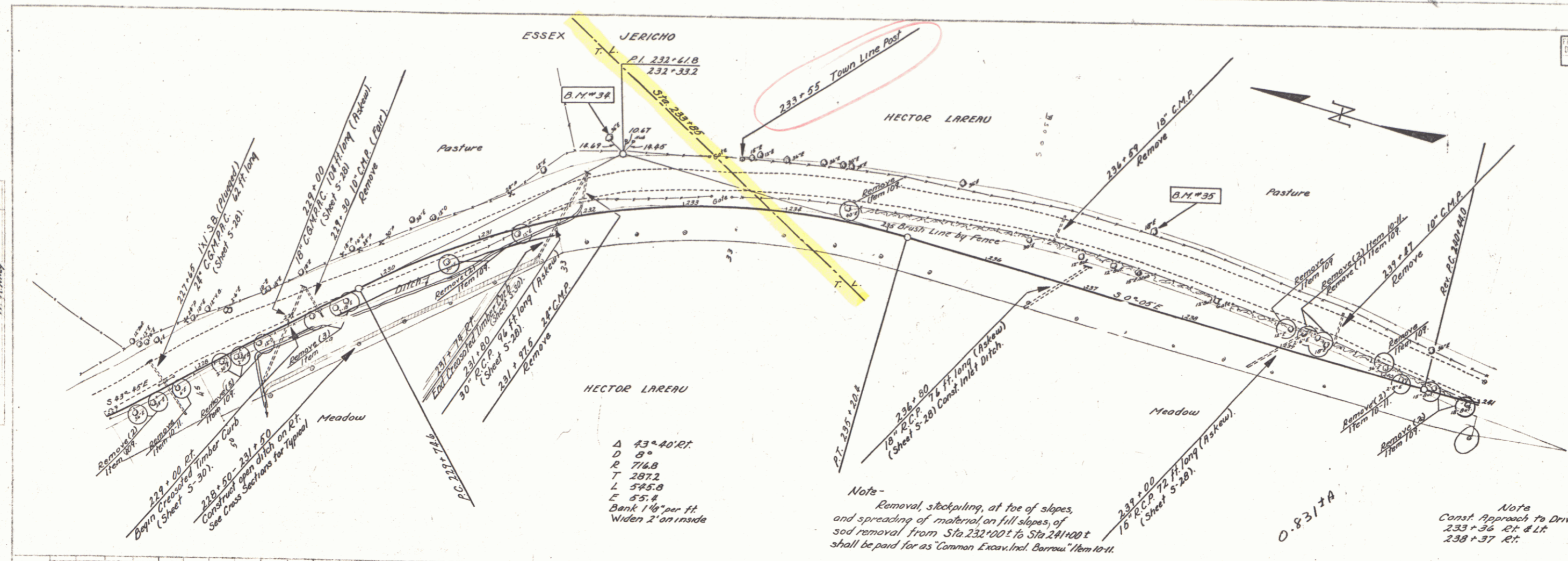


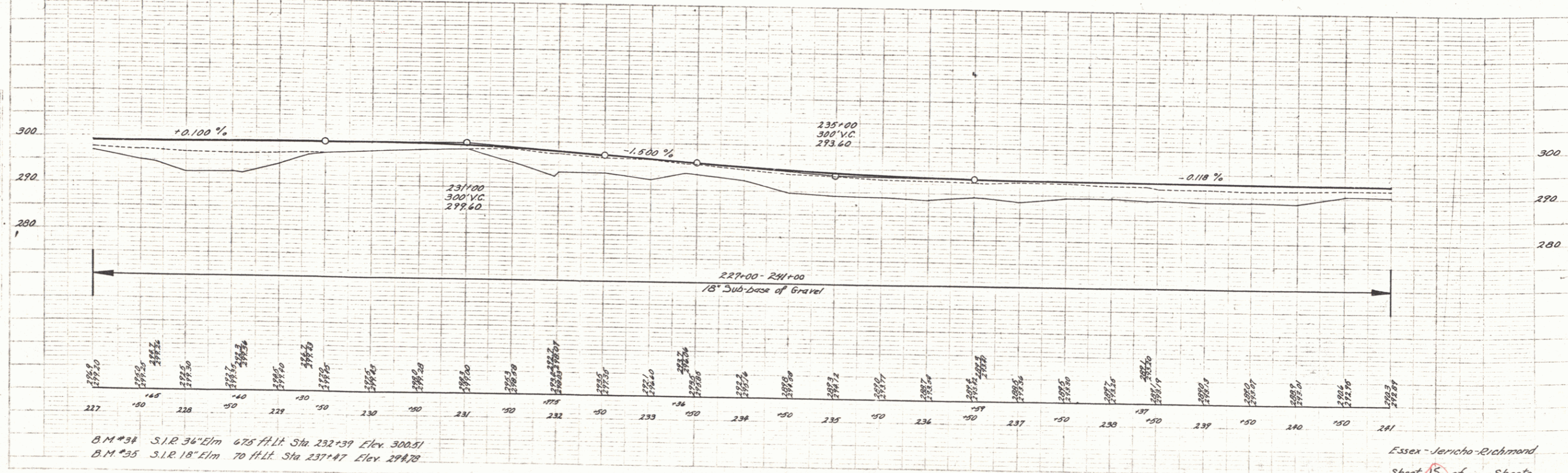
FED. ROAD DIST. NO.	STATE	FED. AID PROJ. NO.	FISCAL YEAR	SHEET NO.	TOTAL SHEETS
9	Vt.			15	



$\Delta$  43°40'RT  
 $D$  9"  
 $R$  774.8  
 $T$  297.2  
 $L$  594.8  
 $E$  55.4  
 Bank 1 1/2' per ft.  
 Widen 2' on inside

Note -  
 Removal, stockpiling, at toe of slopes,  
 and spreading of material, on fill slopes, of  
 sod removal from Sta. 232+00 to Sta. 241+00  
 shall be paid for as 'Common Excav. Incl. Barrow' item to it.

Note  
 Const. Approach to Drives  
 233+36 RT & LT  
 238+37 RT



B.M. #34 S.I.R. 36" Elm 675 ft. Lt. Sta. 232+39 Elev. 300.51  
 B.M. #35 S.I.R. 18" Elm 70 ft. Lt. Sta. 237+47 Elev. 294.78

Essex - Jericho - Richmond  
 Sheet 15 of Sheets

15