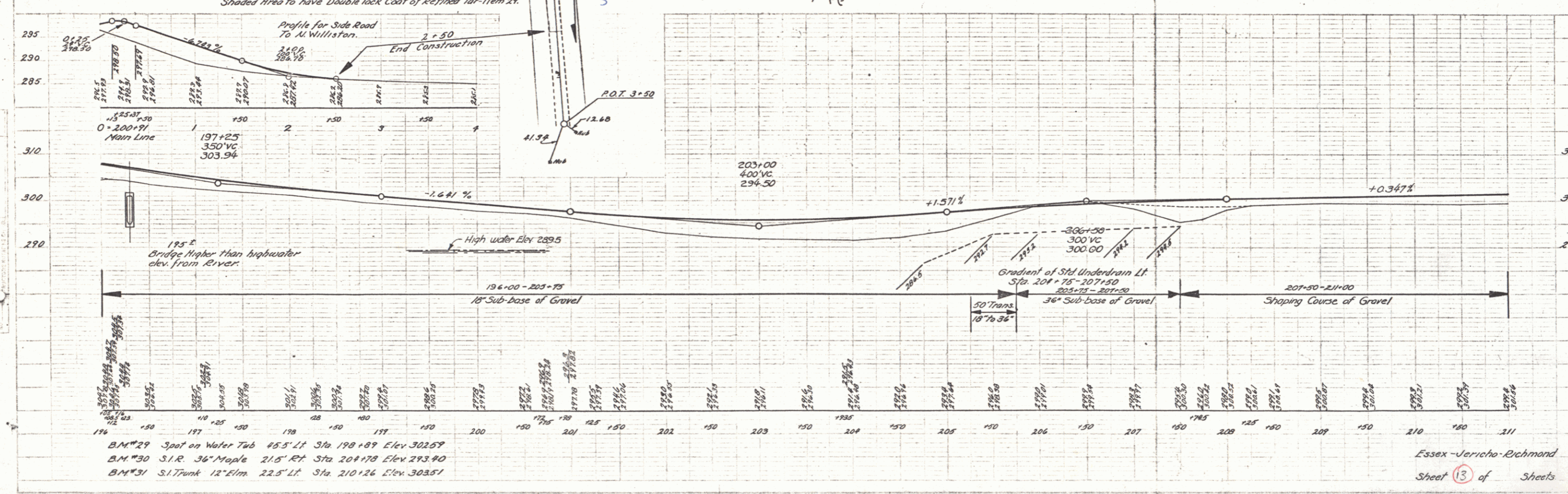


- LIST OF SHEETS**
- 18-2 Culvert Details Sta. 196+50
 - 3 5-32 Cable Rail
 - 4 Barri-codes, Lights & Signs
 - 5-6 Cross Sections Sta. 195+50 to 197+10
- LIST OF QUANTITIES**
- | | |
|--------------------------|-----------|
| 15 Channel Excavation | 20 cu |
| 16 Structure " | 200 cu |
| 41A Concrete Class "A" | 62 cu |
| 42 Reinforcing Steel | 6285 lbs. |
| 57 Removal Present Super | 1 L.S. |
| 69 Stone Fill | 15 cu |

Note
Const. Approach to Drives
197+10 L.F.
198+28 L.F. & R.F.
199+50 L.F.
200+00 L.F.
200+75 L.F.
201+25 L.F.
203+00 L.F.
205+95 L.F.



B.M.#29 Spot on Water Tub 45.5' Lt Sta. 198+89 Elev. 302.57
B.M.#30 S.I.R. 36" Maple 21.5' Rt. Sta. 201+78 Elev. 293.90
B.M.#31 S.I. Trunk 12" Elm. 22.5' Lt. Sta. 210+26 Elev. 303.51