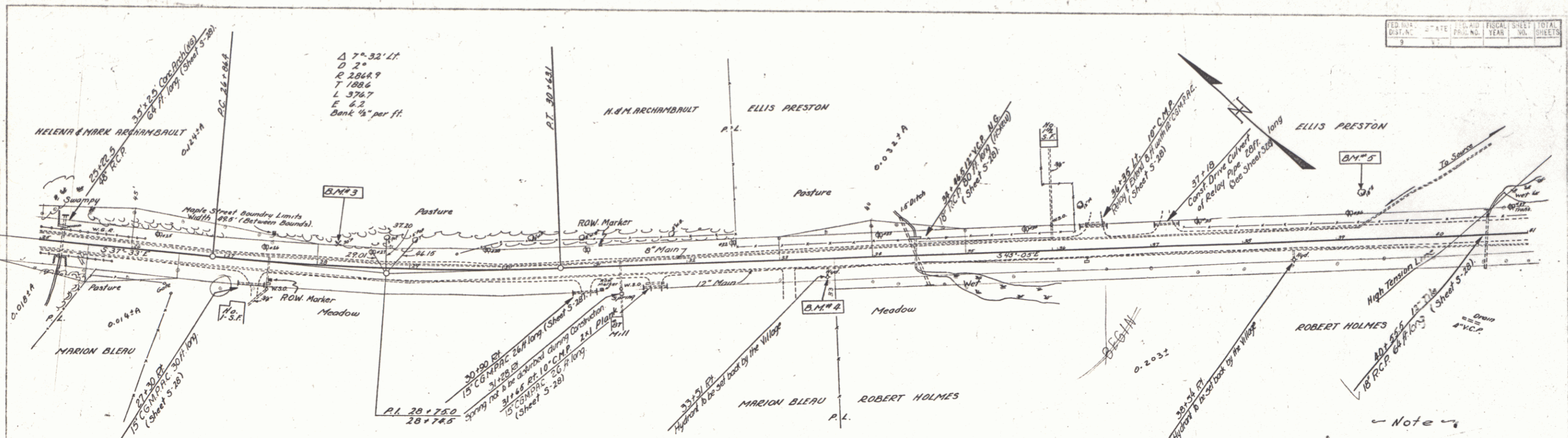


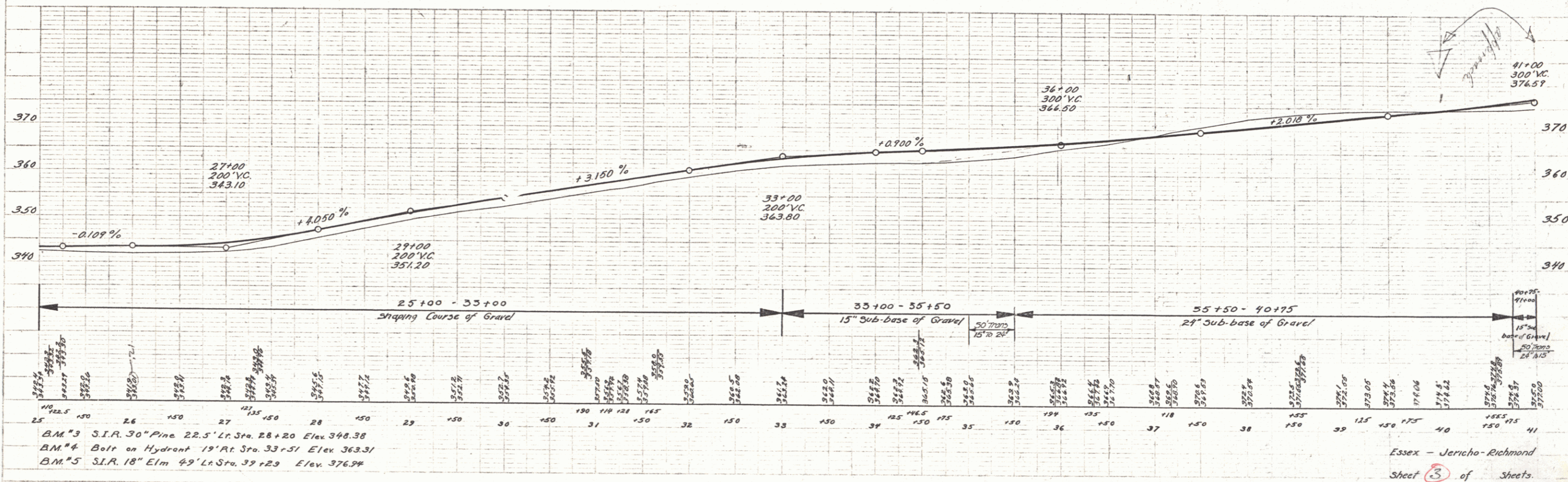
FED. DIST. NO.	STATE	PROJ. NO.	FISCAL YEAR	SHEET NO.	TOTAL SHEETS
9	Vt.			3	

PLAN
 SHEETS
 REVISIONS
 DATE
 BY
 CHECKED
 NO.



$\Delta 7^{\circ}32'11''$
 $D 2^{\circ}$
 $R 2864.9$
 $T 188.6$
 $L 376.7$
 $E 6.2$
 Bank $\frac{1}{4}$ " per ft.

Note
 Const. Approach to drives
 27+35 Ft. 33+00 Ft.
 30+90 Ft. 36+35 Ft.
 31+65 Ft. 37+16 Ft.



BM #3 S.I.R. 30" Pine 22.5' Lt. Sta. 28+20 Elev. 348.38
 BM #4 Bolt on Hydrant 19" Rt. Sta. 33+51 Elev. 363.31
 BM #5 S.I.R. 18" Elm 49' Lt. Sta. 39+29 Elev. 376.94

Essex - Jericho - Richmond
 Sheet 3 of Sheets.