

INDEX OF SHEETS

SHEET NO.	TITLE PAGE
1	PLAN & PROFILE OF IMPROVEMENT
2	AUTOMATIC FLASH SIGNAL (MODIFIED FOR 1-TRACK) (020.12-19.1)
3	WIRING PLAN FOR AUTOMATIC FLASH SIGNAL (No S.D. 3312-1)

PER. ROAD DIST. NO.	STATE	W.P.G.J. PROJ. NO.	FISCAL YEAR	SHEET NO.	TOTAL SHEETS
9	VT.	225	1937	1	4

STATE OF VERMONT  
STATE HIGHWAY DEPARTMENT

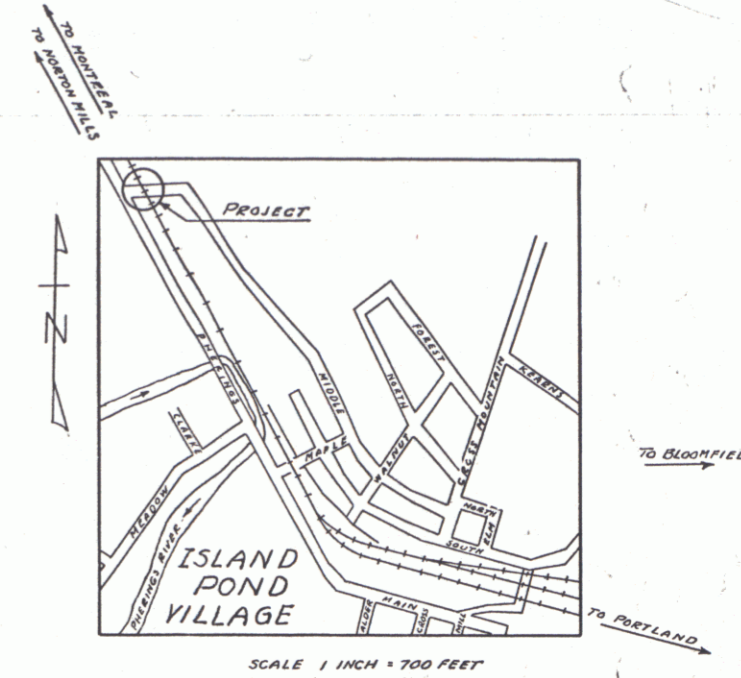
PLAN AND PROFILE OF PROPOSED  
STATE HIGHWAY

U.S. WORKS PROGRAM GRADE CROSSING PROJECT

TOWN OF BRIGHTON

AUTOMATIC FLASH SIGNALS AT CROSSING OF THE  
GRAND TRUNK RAILROAD ON MIDDLE STEET, VILLAGE  
OF ISLAND POND.

LENGTH OF PROJECT 95.0 FEET = 0.018 MILES



APPROVED: *[Signature]*  
CHIEF ENGINEER  
CANADIAN NATIONAL RAILWAYS

MP 5.025-5.137  
RIGHT-OF-WAY DIVISION  
TOWN FILE  
PERPETUAL

Down of 4114  
(To Be Returned To R.O.W. Division)

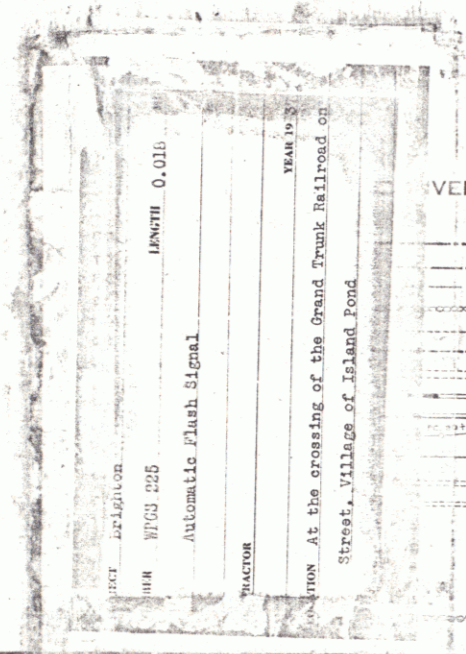
THESE PLANS ARE SUBJECT TO SUCH REVISIONS AS MAY BE REQUIRED BY THE BUREAU OF PUBLIC ROADS AND COMMISSIONER OF HIGHWAYS. CONSTRUCTION IS TO BE CARRIED ON IN ACCORDANCE WITH THE PLANS AND SPECIFICATIONS OF THE ASSOCIATION OF AMERICAN RAILROADS, WHICH APPLY TO THIS WORK.

APPROVED: *[Signature]* February 18, 1937  
COMMISSIONER OF HIGHWAYS  
SUBMITTED BY ORDER OF THE STATE HIGHWAY BOARD

Route VT. 114  
Pin # 00R484

RECOMMENDED \_\_\_\_\_  
DISTRICT ENGINEER BUREAU OF PUBLIC ROADS  
RECOMMENDED FOR APPROVAL \_\_\_\_\_  
CHIEF ENGINEER BUREAU OF PUBLIC ROADS  
APPROVED \_\_\_\_\_  
DIRECTOR - BUREAU OF PUBLIC ROADS

SERIES No. 225 FILED  
SHEET 1 OF 4



VENTIONAL SIGNS

	BATUM	LINE
GROUND ELEVATION	.....	.....
GRADE ELEVATION	.....	.....

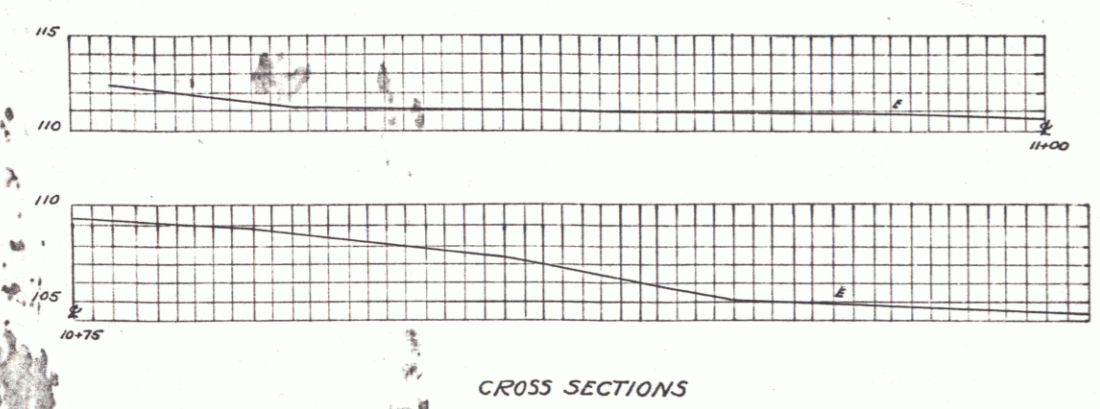
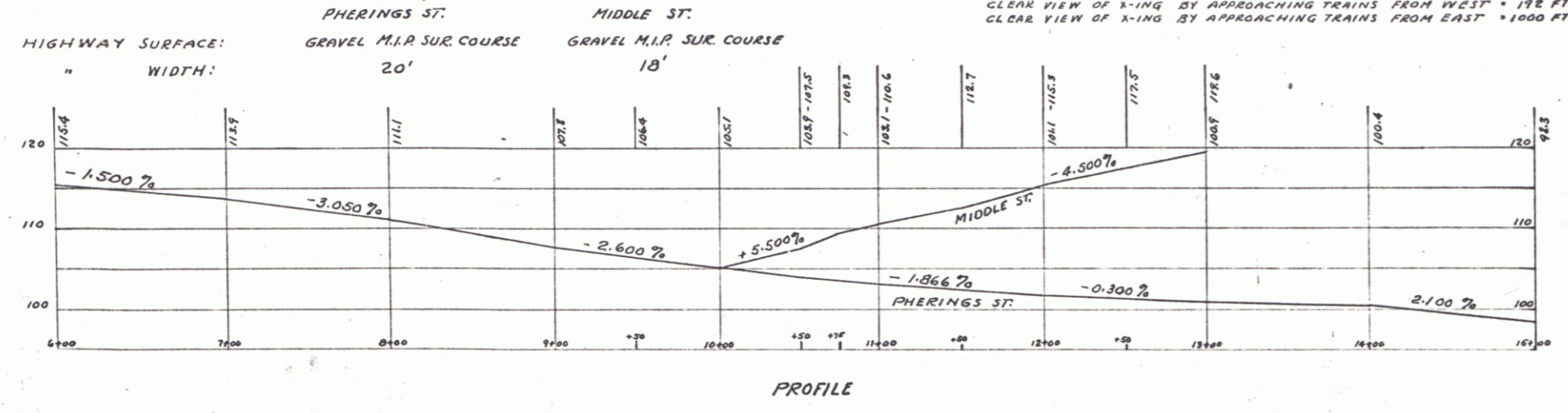
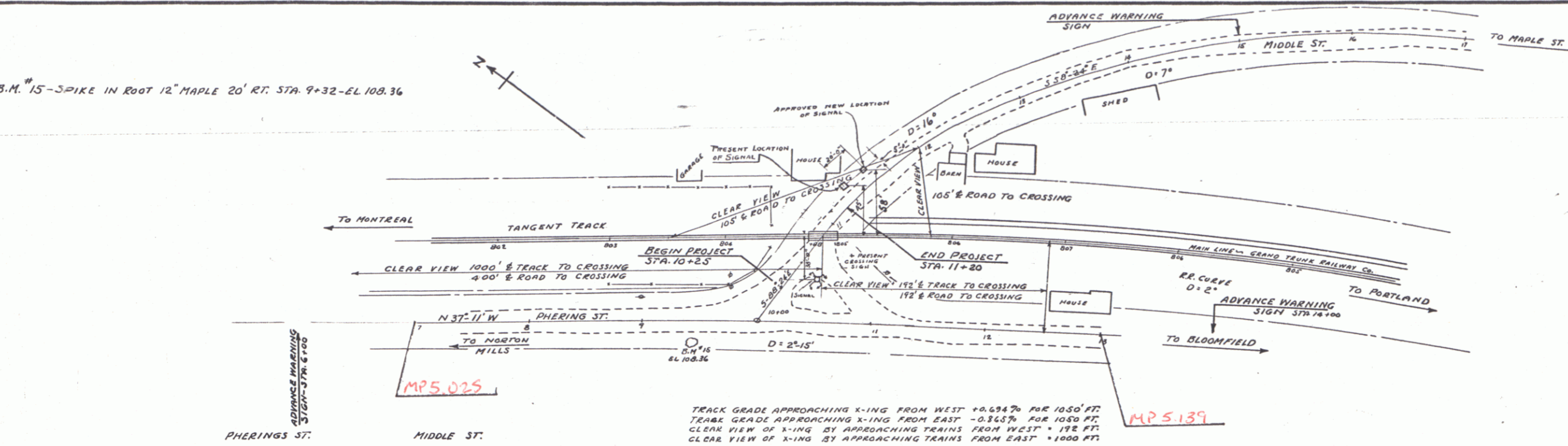
CURVE DATA

DEFLECTION ANGLE.....	Δ
DEGREE OF CURVE.....	D
RADIUS OF CURVE.....	R
TANGENT DISTANCE.....	T
LENGTH OF CURVE.....	L
EXTERNAL DISTANCE.....	E
POINT OF INTERSECTION.....	P. I.
POINT OF CURVE.....	P. C.
POINT OF TANGENT.....	P. T.
POINT ON TANGENT.....	P. O. T.

SCALE

PLAN	HORI.	1" = 50 FEET
PROFILE	VERT.	1" = 10 "
SECTIONS		1" = 5 "

B.M. #15-SPIKE IN ROOT 12" MAPLE 20' RT. STA. 9+32-EL. 108.36



AUTOMATIC FLASH SIGNAL  
 PHERINGS & MIDDLE STS. GRADE CROSSING  
 OVER  
 GRAND TRUNK RAILWAY CO. ROAD  
 OPERATED BY THE  
 CANADIAN NATIONAL RAILWAYS.  
 V.T. W.P.G.S. 225 - ISLAND POND,  
 BRIGHTON, VT.

ESTIMATED QUANTITIES	
	REQUIRED: 2-SIGNALS WITH WIRING & WARNING SIGNS.
Surveyed by LANE	Designed by
Drawn by	Traced by ANP
Checked by	Series M.G.S. No. 225
Sheet 2 of 4	Filed