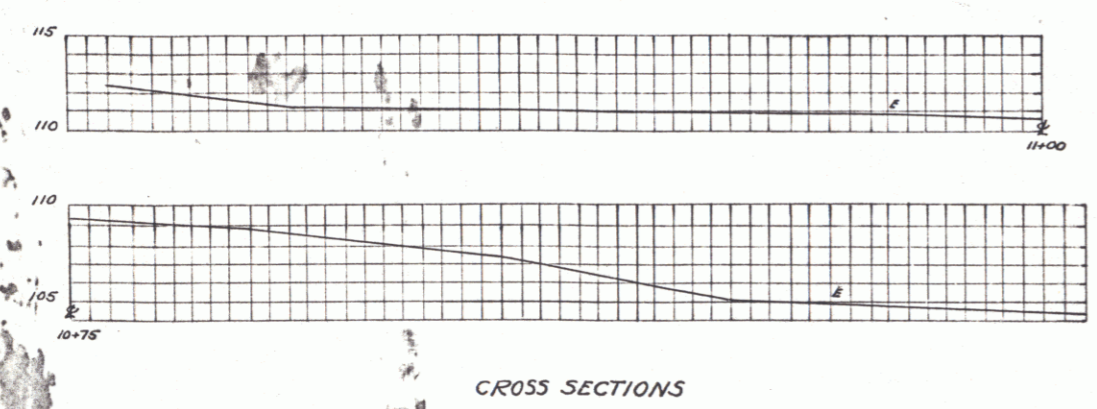
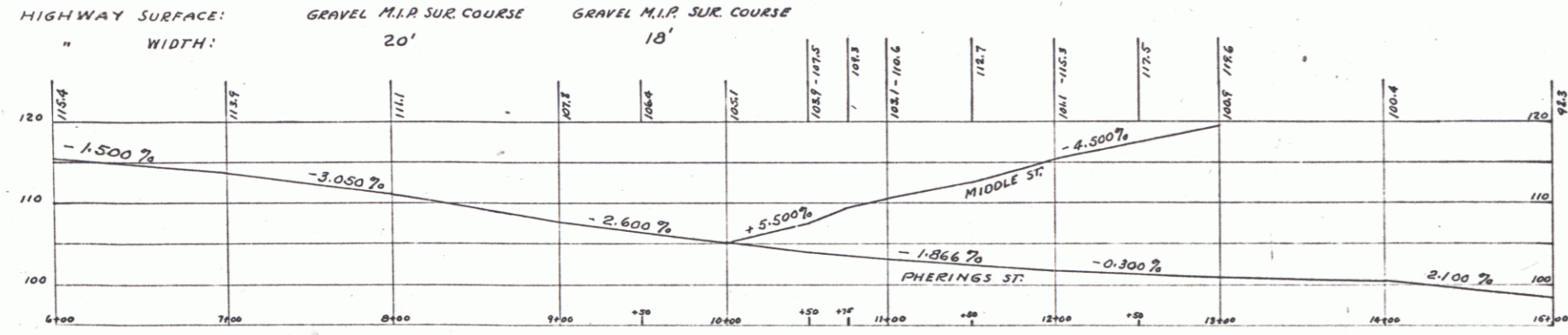
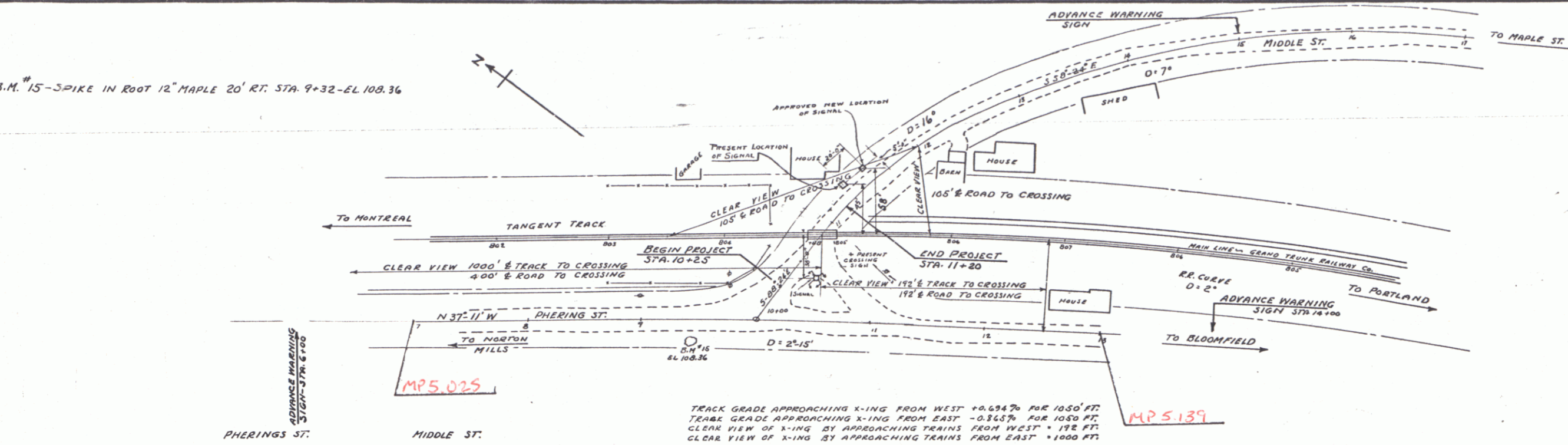


B.M. #15-SPIKE IN ROOT 12" MAPLE 20' RT. STA. 9+32-EL 108.36



AUTOMATIC FLASH SIGNAL
 PHERINGS & MIDDLE STS. GRADE CROSSING
 OVER
 GRAND TRUNK RAILWAY CO. ROAD
 OPERATED BY THE
 CANADIAN NATIONAL RAILWAYS.
 V.T. W.P.G.S. 225 - ISLAND POND,
 BRIGHTON, VT.

ESTIMATED QUANTITIES	
REQUIRED: 2-SIGNALS WITH WIRING & WARNING SIGNS.	Surveyed by LANE Designed by Drawn by Traced by Checked by Series M.G.S. No. 225 Sheet 2 of 4 Sheets