

INDEX OF SHEETS

SHEET NO.	TITLE PAGE
1	PLAN & PROFILE OF IMPROVEMENT
2	AUTOMATIC FLASH SIGNAL (MODIFIED FOR 1-TRACK) (020.12-19.1)
3	WIRING PLAN FOR AUTOMATIC FLASH SIGNAL (No S.D. 3312-1)

PER. ROAD DIST. NO.	STATE	W.P.G.J. PROJ. NO.	FISCAL YEAR	SHEET NO.	TOTAL SHEETS
9	VT.	225	1937	1	4

STATE OF VERMONT  
STATE HIGHWAY DEPARTMENT

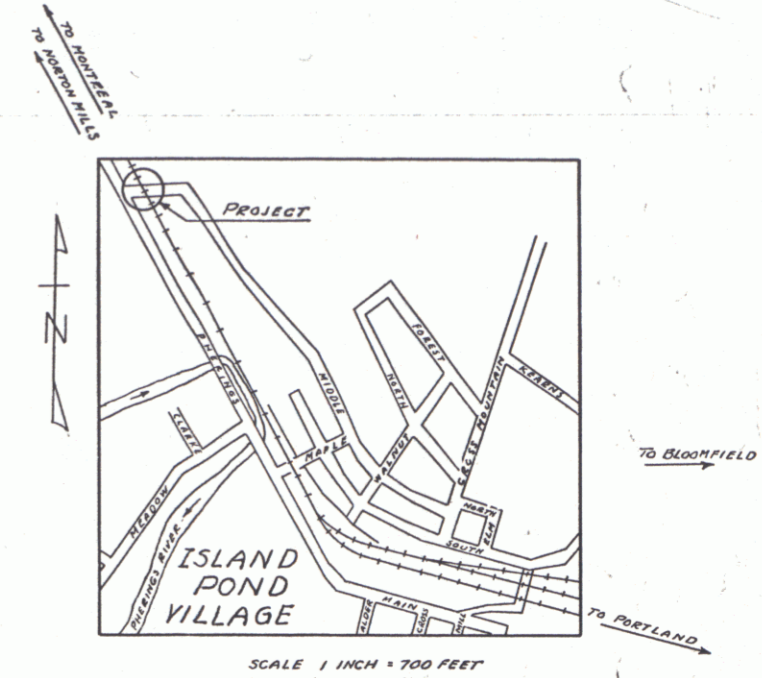
PLAN AND PROFILE OF PROPOSED  
STATE HIGHWAY

U.S. WORKS PROGRAM GRADE CROSSING PROJECT

TOWN OF BRIGHTON

AUTOMATIC FLASH SIGNALS AT CROSSING OF THE  
GRAND TRUNK RAILROAD ON MIDDLE STEET, VILLAGE  
OF ISLAND POND.

LENGTH OF PROJECT 95.0 FEET = 0.018 MILES



APPROVED: *[Signature]*  
CHIEF ENGINEER  
CANADIAN NATIONAL RAILWAYS

MP 5.025-5.137  
RIGHT-OF-WAY DIVISION  
TOWN FILE

PERPETUAL

Town of Brighton  
(To Be Returned To R.O.W. Division)

THESE PLANS ARE SUBJECT TO SUCH REVISIONS AS MAY BE REQUIRED BY THE  
BUREAU OF PUBLIC ROADS AND COMMISSIONER OF HIGHWAYS.  
CONSTRUCTION IS TO BE CARRIED ON IN ACCORDANCE WITH THE PLANS AND  
SPECIFICATIONS OF THE ASSOCIATION OF AMERICAN RAILROADS, WHICH APPLY TO THIS  
WORK.

APPROVED: *[Signature]* February 18, 1937  
COMMISSIONER OF HIGHWAYS

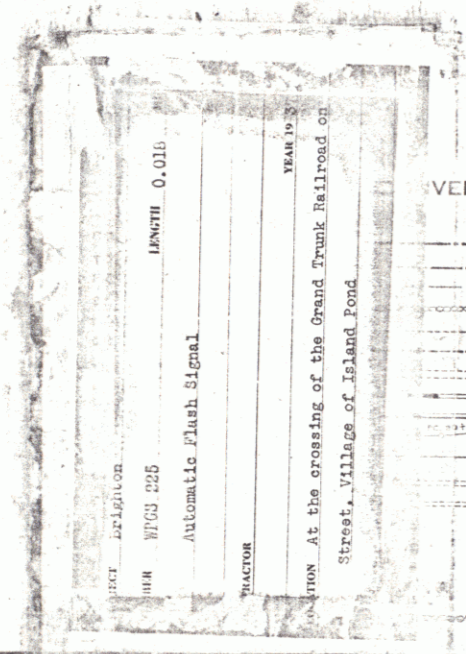
SUBMITTED BY ORDER OF THE STATE HIGHWAY BOARD

Route VT. 114

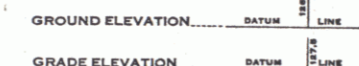
Pin # 00R484

RECOMMENDED \_\_\_\_\_  
DISTRICT ENGINEER BUREAU OF PUBLIC ROADS  
RECOMMENDED FOR APPROVAL \_\_\_\_\_  
CHIEF ENGINEER BUREAU OF PUBLIC ROADS  
APPROVED \_\_\_\_\_  
DIRECTOR - BUREAU OF PUBLIC ROADS

SERIES No. 225 FILED  
SHEET 1 OF 4



VENTIONAL SIGNS



- CURVE DATA
- DEFLECTION ANGLE.....Δ
  - DEGREE OF CURVE.....D
  - RADIUS OF CURVE.....R
  - TANGENT DISTANCE.....T
  - LENGTH OF CURVE.....L
  - EXTERNAL DISTANCE.....E
  - POINT OF INTERSECTION.....P. I.
  - POINT OF CURVE.....P. C.
  - POINT OF TANGENT.....P. T.
  - POINT ON TANGENT.....P. O. T.

SCALE	
PLAN	1" = 50 FEET
PROFILE	HORI. 1" = 50 -
	VERT. 1" = 10 -
SECTIONS	1" = 5 -