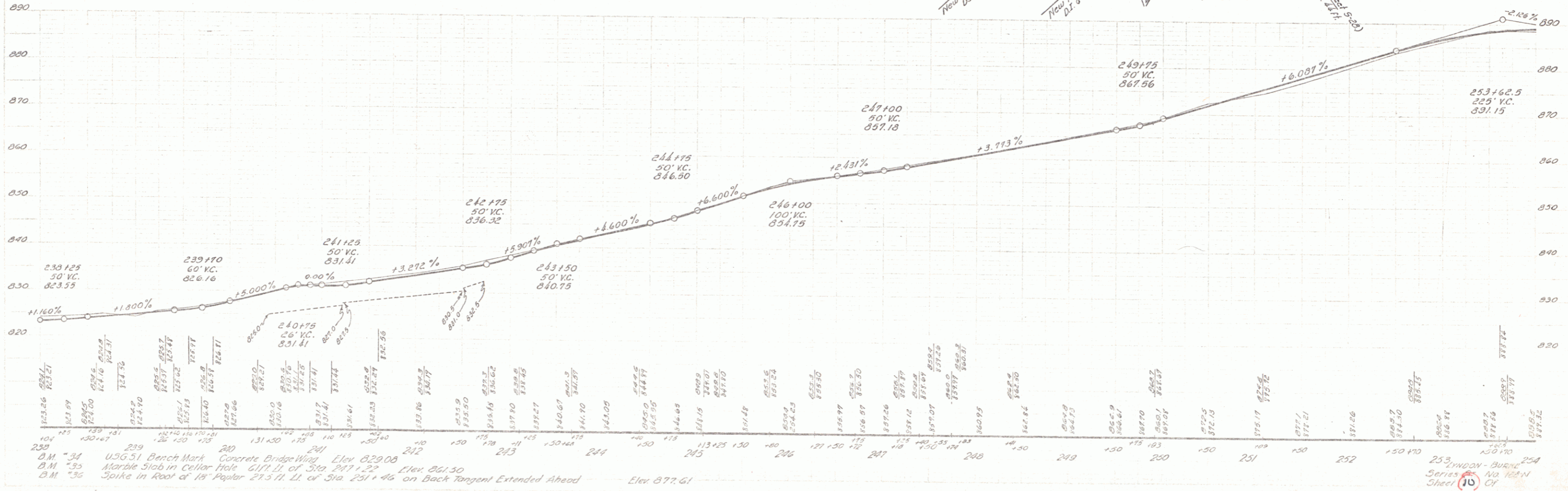


Note:
 Old drop inlet grates to be removed and
 surface water to be kept out of existing sewer
 system.



Scale
 1" = 40' (Horizontal)
 1" = 10' (Vertical)

Scale
 1" = 40' (Horizontal)
 1" = 10' (Vertical)

238+125 U.S.G. 51 Bench Mark
 B.M. 34 U.S.G. 51 Concrete Bridge Wing Elev. 829.08
 B.M. 35 Marble Slab in Cellar Hole Elev. 829.22
 B.M. 36 Spike in Roof of 18' Poplar 27.3 ft. LL of Sta. 251+46 on Back Tangent Extended Ahead Elev. 877.61

Scale
 1" = 40' (Horizontal)
 1" = 10' (Vertical)

253+62.5
 SERIES NO. 108-N
 SHEET 10