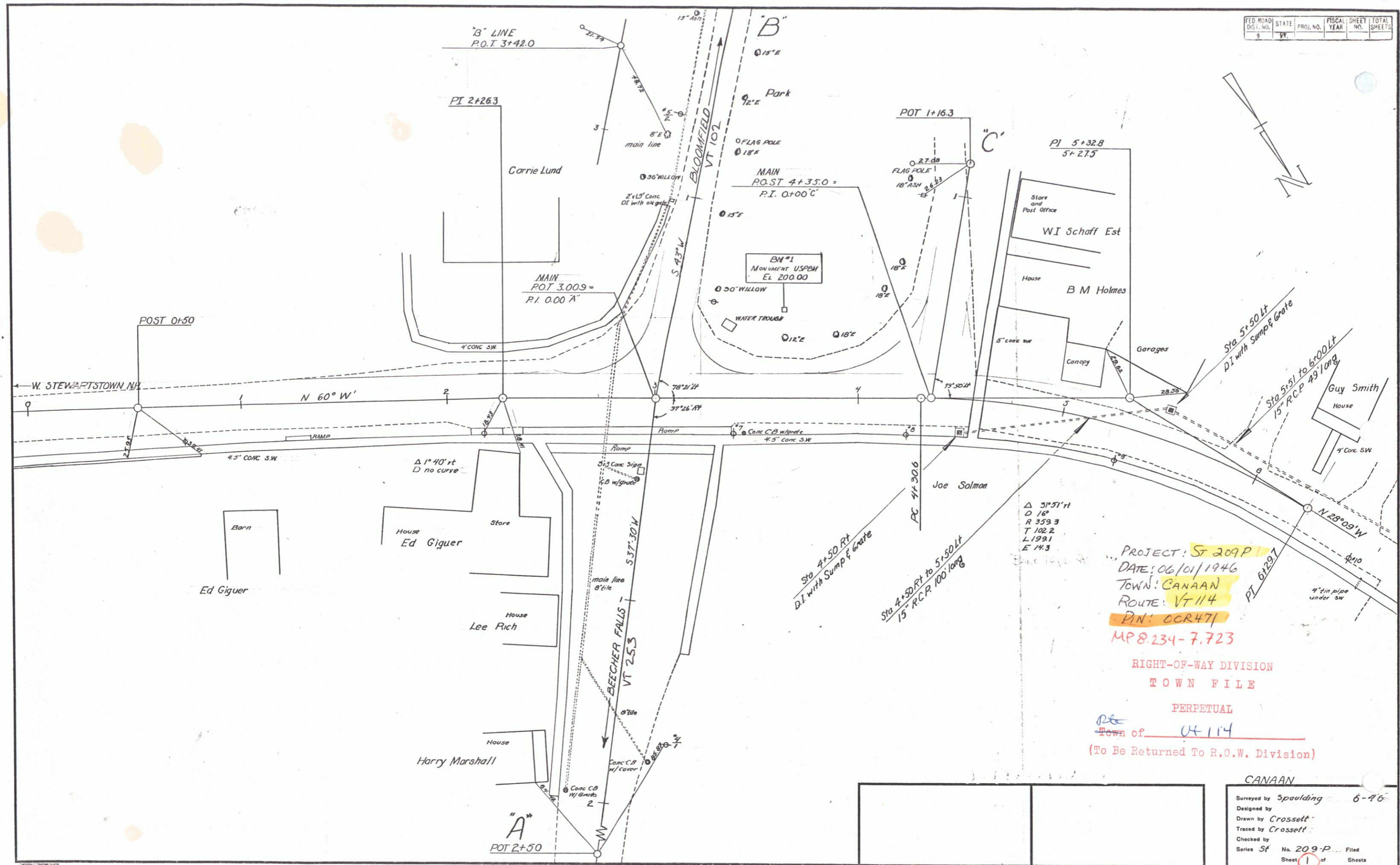


FED. ROAD DIST. NO.	STATE	PROJ. NO.	FISCAL YEAR	SHEET NO.	TOTAL SHEETS
9	Vt.				



PROJECT: **ST 209P**
 DATE: 06/01/1946
 TOWN: **CANAAN**
 ROUTE: **VT 114**
 PIN: **CCR471**
MP 8.234-7.723
 RIGHT-OF-WAY DIVISION
 TOWN FILE
 PERPETUAL
 Town of VT 114
 (To Be Returned To R.O.W. Division)

CANAAN	
Surveyed by Spaulding	6-46
Designed by	
Drawn by Crossett	
Traced by Crossett	
Checked by	
Series St No. 209-P Filed	
Sheet 1 of 1 Sheets	