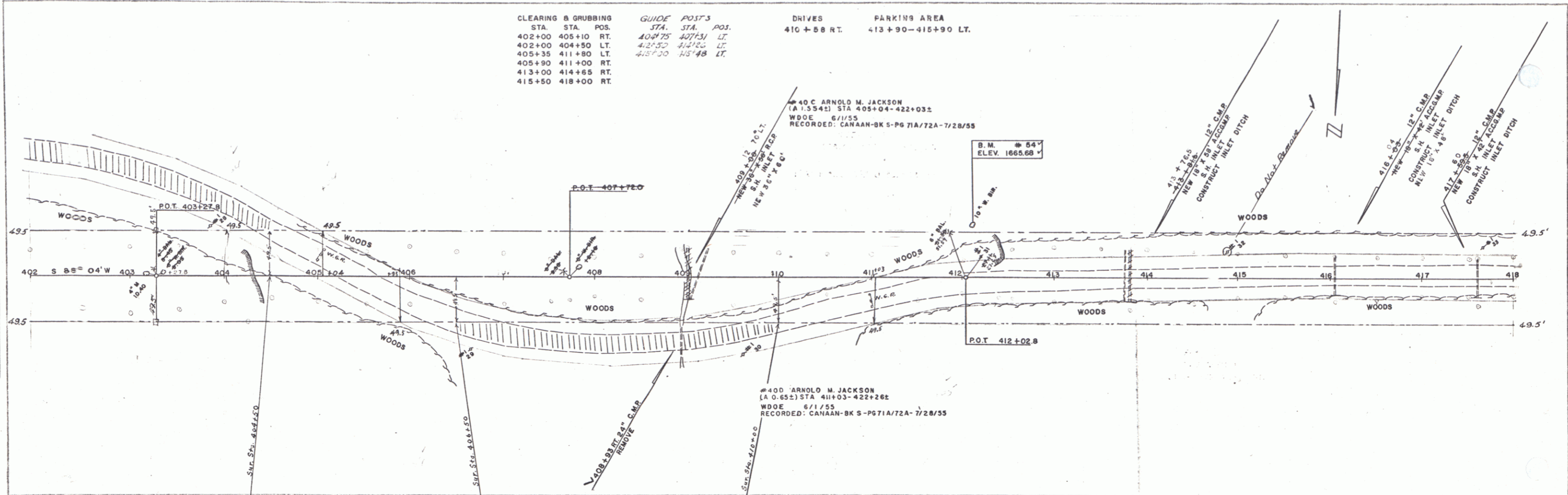


PLAN  
 SHEET NO. 31  
 PROJECT NO. 209(4)  
 SHEET 31 OF 101

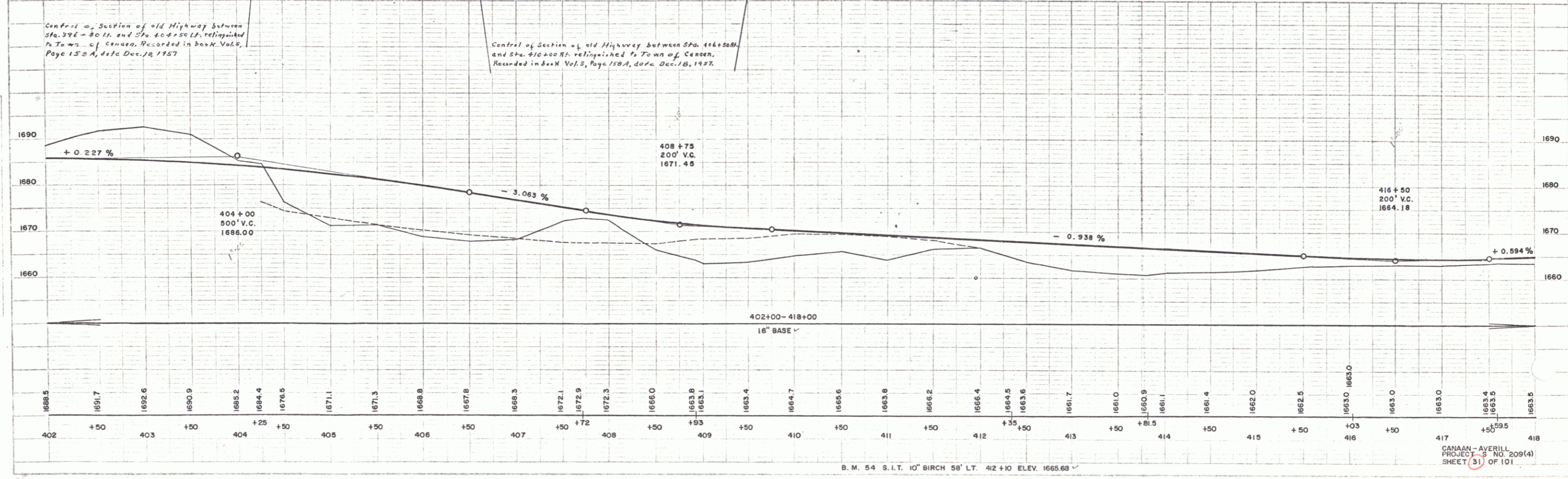
B-54  
 WEBSTER-MARTIN, INC.

CLEARING & GRUBBING			GUIDE POSTS			DRIVES		PARKING AREA	
STA.	STA.	POS.	STA.	STA.	POS.				
402+00	405+10	RT.	404+75	407+31	LT.	410+58 RT.	413+90-415+90	LT.	
402+00	404+50	LT.	425+50	424+50	LT.				
405+35	411+80	LT.	425+00	424+48	LT.				
405+90	411+00	RT.							
413+00	414+65	RT.							
415+50	418+00	RT.							



Center of Section of old Highway between Sta. 396+30.00 and Sta. 404+50.00 relinquished to Town of Canaan. Recorded in book Vol. 2, Page 152A, date Dec. 18, 1957.

Center of Section of old Highway between Sta. 406+50.00 and Sta. 410+00.00 relinquished to Town of Canaan. Recorded in book Vol. 2, Page 152A, date Dec. 18, 1957.



CANAAN-AVERILL  
 PROJECT NO. 209(4)  
 SHEET 31 OF 101