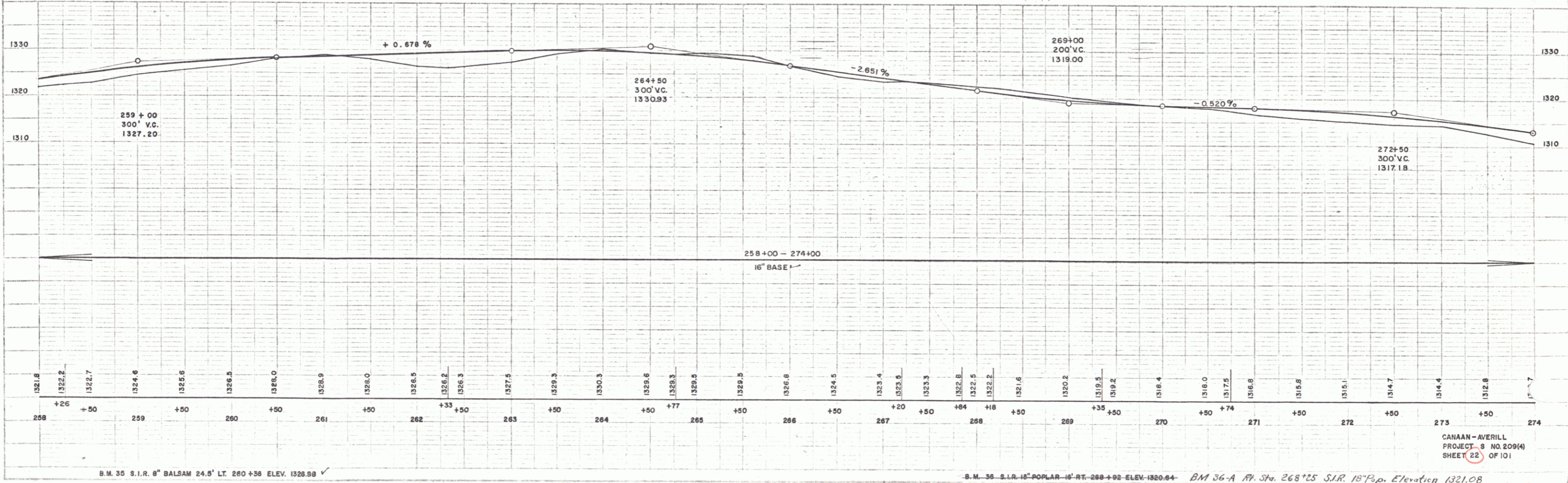
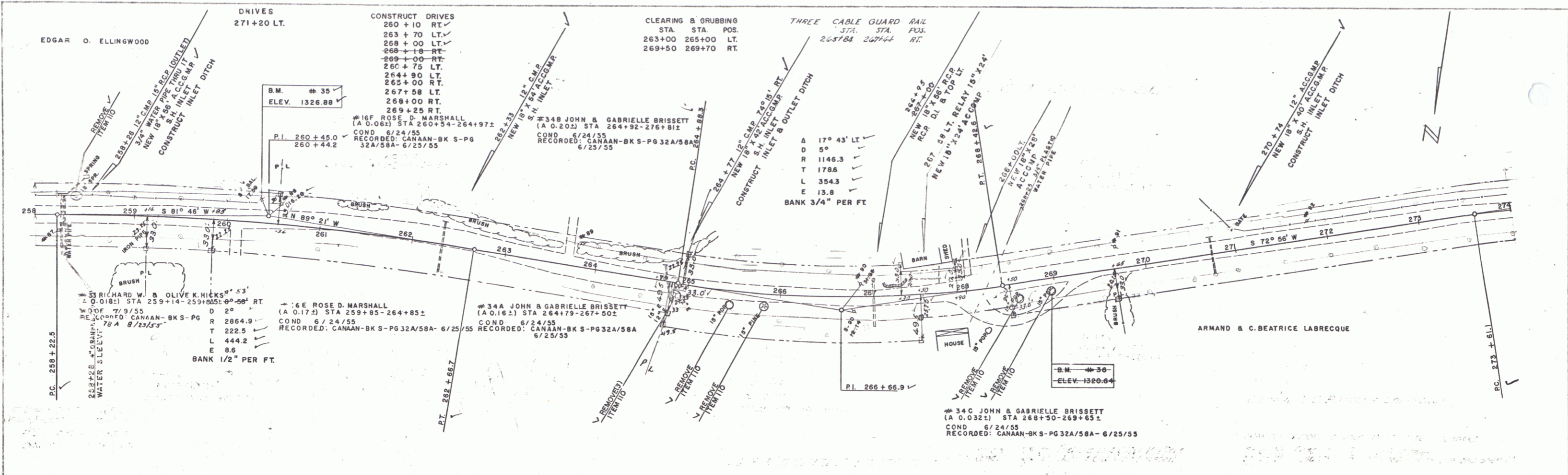


PLAN
 SHEET NO. 22
 PROJECT NO. 2094
 DATE 6/25/55
 ENGINEER
 SURVEYOR
 WEBSTER-MARTIN INC. 7-54

DELANO
 WEBSTER-MARTIN INC. 7-54



B.M. 35 S.I.R. 8" BALSAM 24.5' LT. 260+36 ELEV. 1328.88

B.M. 36 S.I.R. 18" POPLAR 18' RT. 268+92 ELEV. 1320.64 B.M. 36-A R.R. Sta. 268+25 S.I.R. 18" Pop. Elevation 1321.08

CANAAN-AVERILL
 PROJECT - 3 NO. 2094
 SHEET 22 OF 101