

INDEX OF SHEETS

SHEET NO.	TITLE PAGE
1	TITLE PAGE
2	TYPICAL SECTIONS AND ASPHALT CEMENT, ITEM 344-B
3	BANKING AND WIDENING TABLES
4	QUANTITY SHEET (ITEMS)
5-6	QUANTITY SHEETS (DRAINAGE)
7-13	EARTHWORK SHEETS
14-33	PLAN & PROFILE SHEETS
34-35	METAL PLATE ARCH DETAILS 395+50
36	CONSTRUCTION DETAILS CD DRAINAGE & MARKERS
37	CONSTRUCTION DETAILS CD-1 DITCHES
38	CONSTRUCTION DETAILS CD-2 TYPICAL SLOPE GRADING
39	STANDARD STRUCTURE SHEET S-53-48 DROP INLETS
40	STANDARD STRUCTURE SHEET S-40 BARRICADES, SIGNS & LIGHTS
41	STANDARD STRUCTURE SHEET S-48-46 THREE CABLE GUARD RAIL
42-101	CROSS SECTIONS

STANDARD STRUCTURE SHEETS APPROVED BY THE CHIEF ENGINEER, VERMONT STATE DEPARTMENT OF HIGHWAYS
S-40 JUNE 10, 1950

**STATE OF VERMONT
DEPARTMENT OF HIGHWAYS**

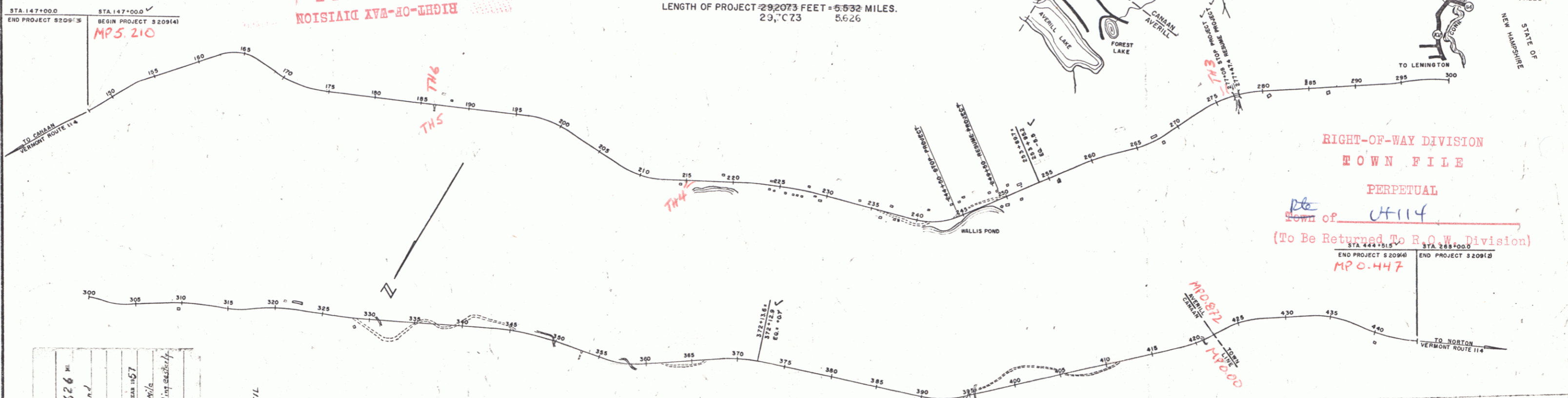
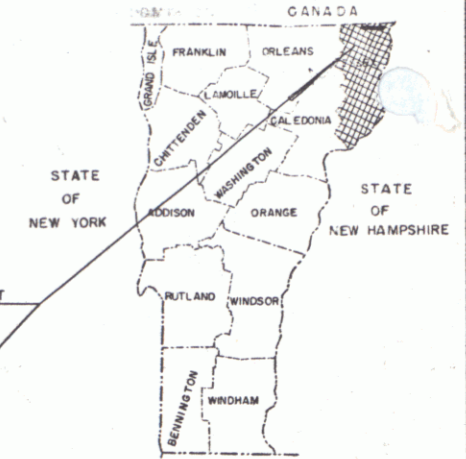
PROPOSED IMPROVEMENT

FEDERAL AID
SECONDARY PROJECT

**TOWNS OF CANAAN AND AVERILL
COUNTY OF ESSEX
VERMONT ROUTE 114
CANAAN-AVERILL ROAD**

BEGINNING AT A POINT 27,519 FEET EASTERLY OF THE CANAAN-AVERILL TOWN LINE AND EXTENDING WESTERLY 29,207.3 FEET.
LENGTH OF PROJECT 29,207.3 FEET = 5.632 MILES.
29,207.3 FEET = 5.626 MILES

FED. ROAD DIST. NO.	STATE	PROJECT NO.	YEAR	SHEET NO.	TOTAL SHEETS
1	VT	S 2094	1955	1	101



CANAAN-AVERILL
LENGTH 5.626 MI.
TRAFFIC
RAIL
REI
GEN
SUF
CUL
DRT
TRC
POW
TELEP
TREES
HEDGE

Hot mixed macadam with crushed gravel and asphalt cement surface course
Contractor Lambert Construction Co., Inc.
Location Vt. Route 114, beginning at a point 27,519 feet easterly of the Canaan-Averill town line and extending westerly 29,207.3 feet to the intersection of the Canaan-Averill town line and the Vermont State Department of Highways.

CANAAN-AVERILL
CONTRACTOR Lambert Construction Co., Inc.
RECORD PLANS NUMBER 114-114-114
CONSTRUCTION COMPLETED Sept. 21, 1957

GROUND ELEVATION DATUM
GRADE ELEVATION DATUM

CURVE DATA
DEFLECTION OF ANGLE Δ
DEGREE OF CURVE D
RADIUS OF CURVE R
TANGENT DISTANCE T
LENGTH OF CURVE L
EXTERNAL DISTANCE E
POINT OF INTERSECTION P.I.
POINT OF CURVE P.C.
POINT OF TANGENT P.T.
POINT ON TANGENT P.O.T.
POINT ON SUB-TANGENT P.O.S.T.

SCALES

TITLE	1" = 500'
TYPICAL	1" = 2'
PLAN	1" = 50'
PROFILE HORIZONTAL	1" = 10'
PROFILE VERTICAL	1" = 5'
CROSS-SECTIONS	1" = 5'

PROJECT NAME AND NUMBER	TYPE	PRVT AREA
CANAAN-AVERILL 5209 (4)	HOT MIX MACADAM	66,016 SQ
RECORD PLANS		
MATERIALS		
SAND Wheeler Pt. Clarksville	GRAVEL Paquetta Pt. Clarksville MA	
ASPHALT Socany Riverside RI	REIN. STEEL Berger Metal Westminster VT	
AC.C.G.H.P. Berger Metal Westminster VT	CONCRETE Carpenter Transitmix St. Johnsbury VT	
R.C.P. Vermont Cone Pipe, Windsor		
CABLE GUARD RAIL American Steel & Wire Co. New Haven Conn.		
CONTRACTOR Lambert Const. Co. Inc.	CONTRACT DATED Aug 31, 1955	
ENGINEERS R. J. Woodward 1955	CONTRACT STARTED Sept 8, 1955	
S. J. Gage 1956 H.M. Miles 1957	CONTRACT COMPLETED Sept 21, 1957	
INSPECTORS Earl Lane H.M. Miles	CONTRACT ACCEPTED Sept 14, 1957	
RECORD PLANS H.M. Miles		

THESE PLANS ARE SUBJECT TO SUCH REVISIONS AS MAY BE REQUIRED BY THE BUREAU OF PUBLIC ROADS OR THE COMMISSIONER OF HIGHWAYS.

CONSTRUCTION IS TO BE CARRIED ON IN ACCORDANCE WITH THE PLANS AND THE STANDARD ROAD AND BRIDGE SPECIFICATIONS OF 1948, AS APPROVED JULY 25, 1949 BY THE BUREAU OF PUBLIC ROADS, INCLUDING ALL SUBSEQUENT APPROVED REVISIONS AND SUCH REVISED SPECIFICATIONS AND SPECIAL PROVISIONS AS ARE SUBMITTED WITH THE PLANS.

NOTE: ANY FURTHER INFORMATION CONCERNING PLAN QUANTITIES, AMOUNTS OR OTHER DETAILS RELATIVE TO THIS PROJECT MAY BE FOUND IN EITHER THE FIELD BOOKS OR THE ESTIMATE FILE.

APPROVED CONSTRUCTION ENGINEER DATE JUN 3 1958	APPROVED SECONDARY ENGINEER DATE JUN 3 1958	APPROVED DISTRICT ENGINEER DATE 2/7/55	APPROVED CHIEF ENGINEER DATE JUN 3 1955	APPROVED CHIEF ENGINEER DATE Jan 4 1955
---------------------------------------------------------	------------------------------------------------------	-------------------------------------------------	--------------------------------------------------	--------------------------------------------------

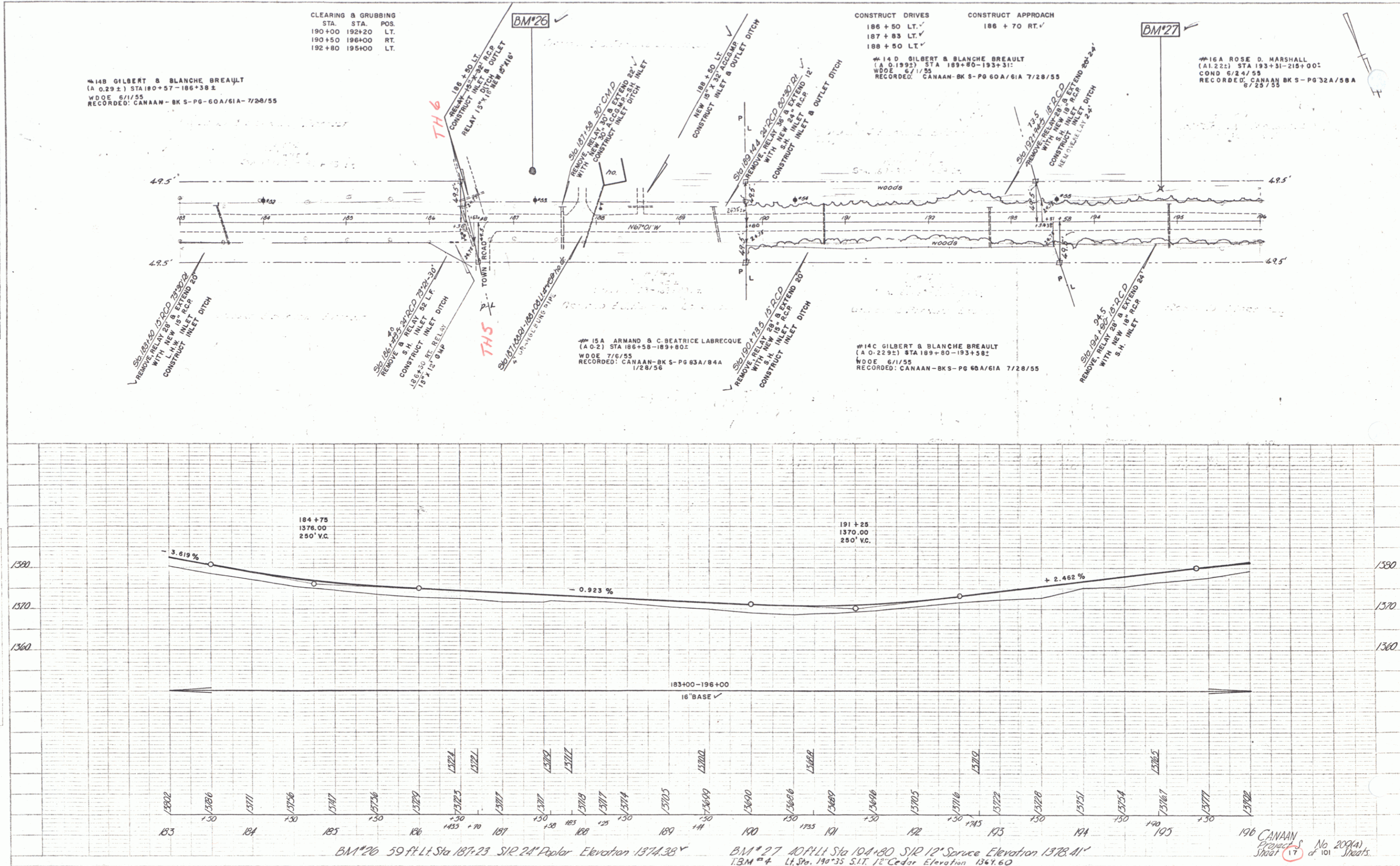
DEPARTMENT OF COMMERCE
BUREAU OF PUBLIC ROADS

APPROVED
DIVISION ENGINEER
DATE

PROJECT 5 NO. 209 (4)
SHEET 1 OF 101 SHEETS
WEBSTER-MARTIN, INC. - CONSULTING ENGINEERS
80 BURLINGTON, VT.

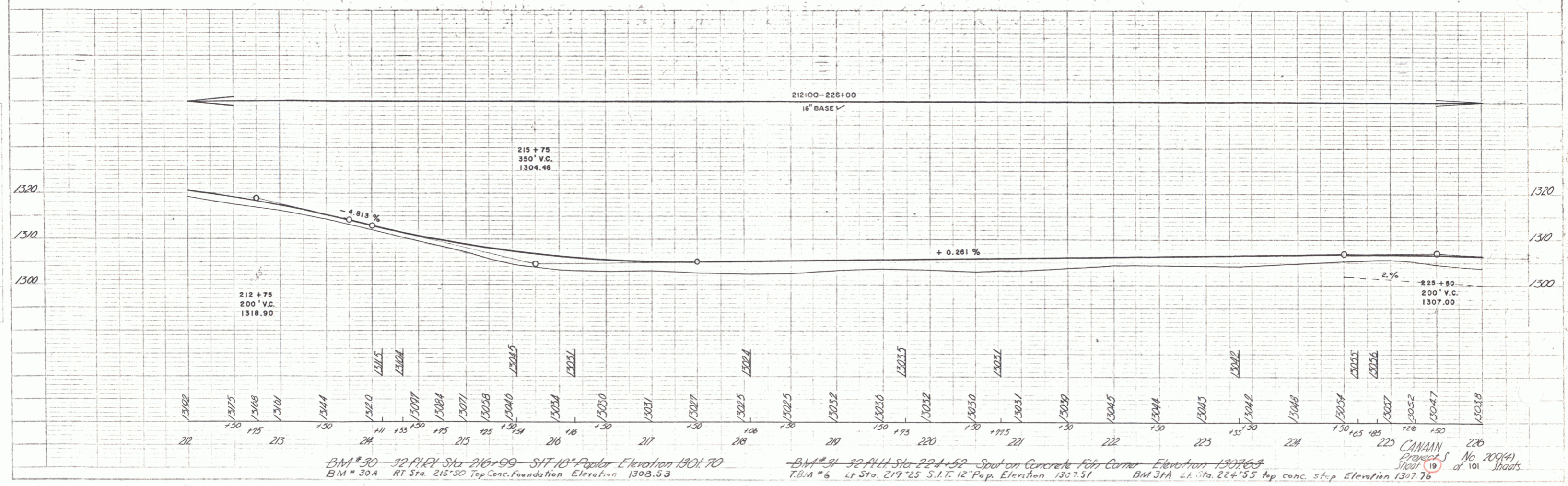
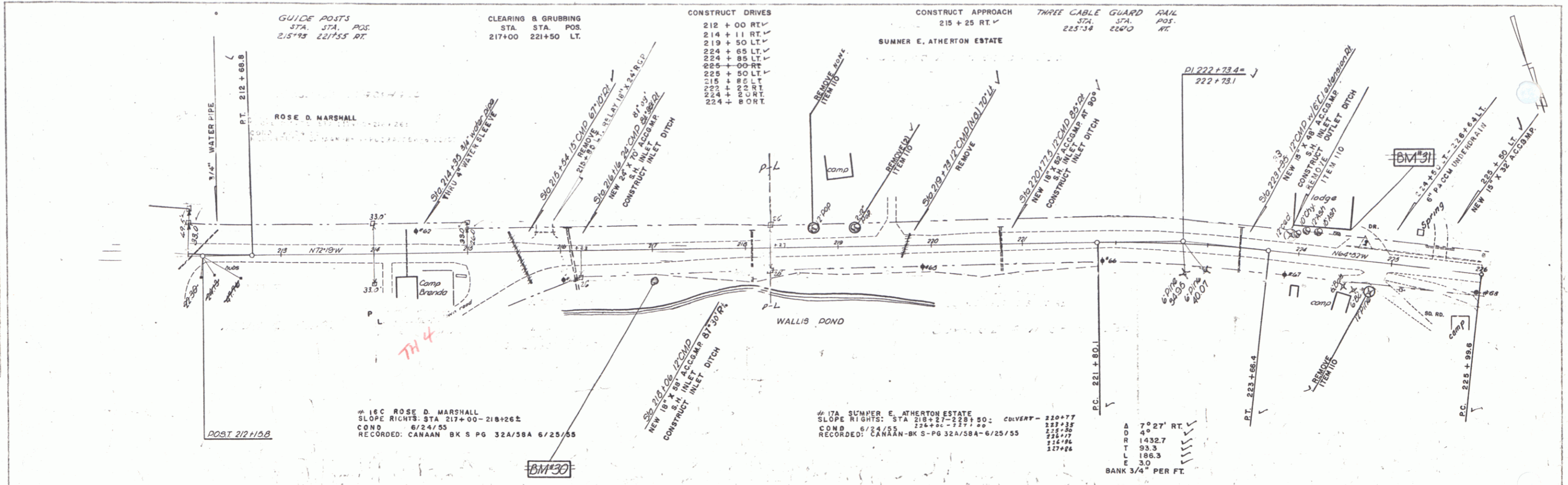
PLAN
 DATE 5/20/55
 DRAWN BY E. WHITE
 CHECKED BY R. HURLEY

540
 560
 575
 PLAN
 DATE 5/20/55
 DRAWN BY E. WHITE
 CHECKED BY R. HURLEY



PLAN
 DATE: 6/24/55
 DRAWN BY: L. Palmer
 CHECKED BY: H. Wiley

PROFILE
 DATE: 6/24/55
 DRAWN BY: L. Palmer
 CHECKED BY: E. White



GUIDE POSTS
 STA. STA. POS.
 215+93 221+55 RT.

CLEARING & GRUBBING
 STA. STA. POS.
 217+00 221+50 LT.

CONSTRUCT DRIVES
 212+00 RT.
 214+11 RT.
 219+50 LT.
 224+65 LT.
 224+85 LT.
 225+00 RT.
 215+85 LT.
 224+80 RT.
 224+80 LT.

CONSTRUCT APPROACH
 215+25 RT.

THREE CABLE GUARD RAIL
 STA. STA. POS.
 225+34 226+0 RT.

16C ROSE D. MARSHALL
 SLOPE RIGHTS: STA 217+00-218+26E
 COND 6/24/55
 RECORDED: CANAAN BK S PG 32A/58A 6/25/55

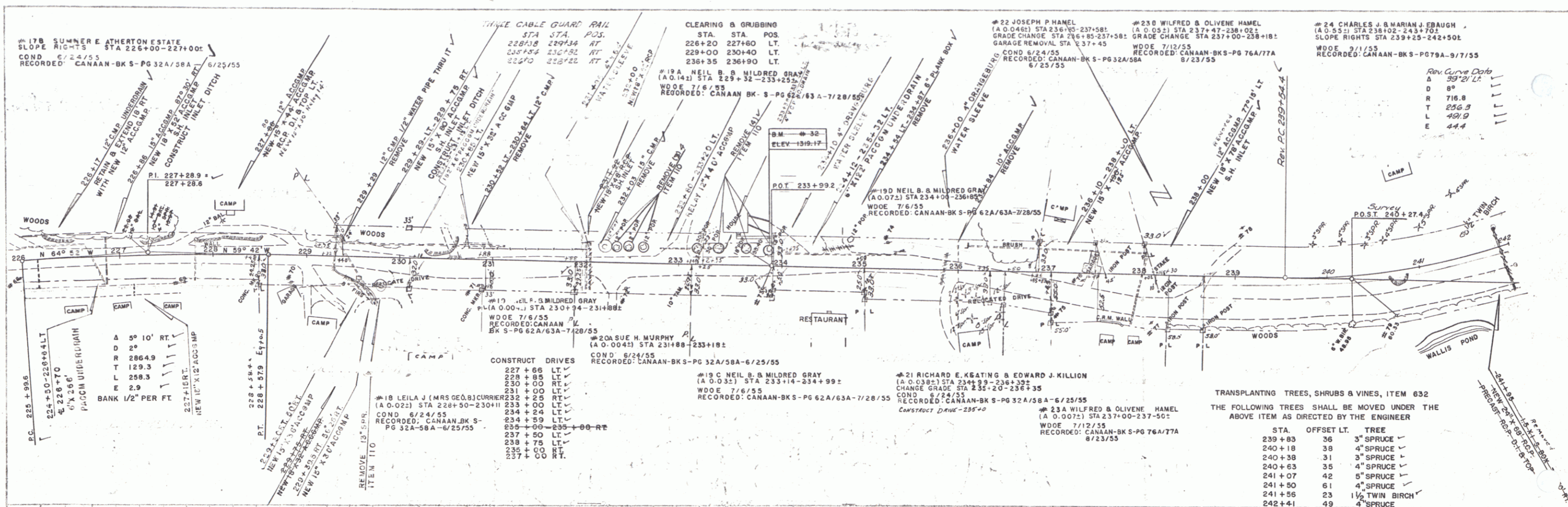
17A SUMMER E. ATHERTON ESTATE
 SLOPE RIGHTS: STA 218+27-225+80
 COND 6/24/55
 RECORDED: CANAAN-BK S-PG 32A/58A-6/25/55

A 7° 27' RT.
 D 49
 R 1432.7
 T 93.3
 L 188.3
 E 3.0
 BANK 3/4" PER FT.

BM # 30 - 32' P.H. Sta 216+99 - SHT 13' Pegs Elevation 1301.70
 BM # 30A RT Sta 215+50 Top Conc. Foundation Elevation 1308.53

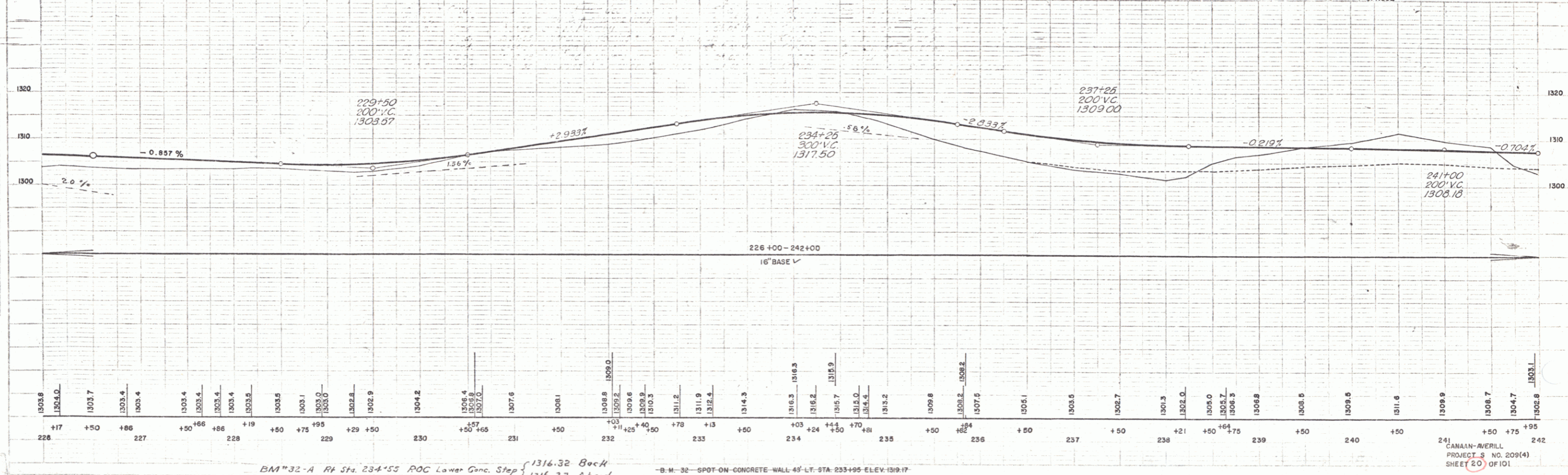
BM # 31 - 32' P.H. Sta 224+52 - Spot on Concrete Fair Corner Elevation 1307.69
 T.B.M # 6 Lt Sta 219+25 S.I.T. 12' Peg. Elevation 1307.51
 BM 31A ch. Sta 224+55 top conc. step Elevation 1307.76

CANAAN
 Project S No. 200(4)
 Sheet 10 of 101 Sheets



RESUBMITTED
WEBSTER-MARTIN INC. 5-54

RESUBMITTED
WEBSTER-MARTIN INC. 5-54



BM 32-A R.F. Sta. 234+55 ROC Lower Gnc. Step { 1316.32 Back
1316.23 Ahead

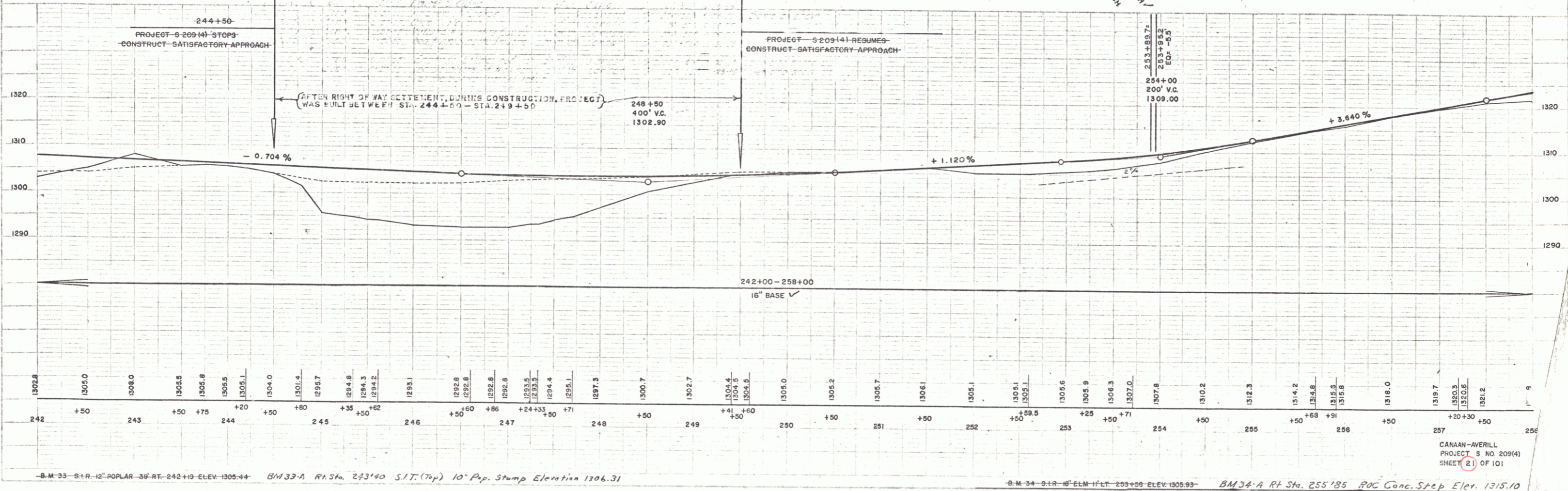
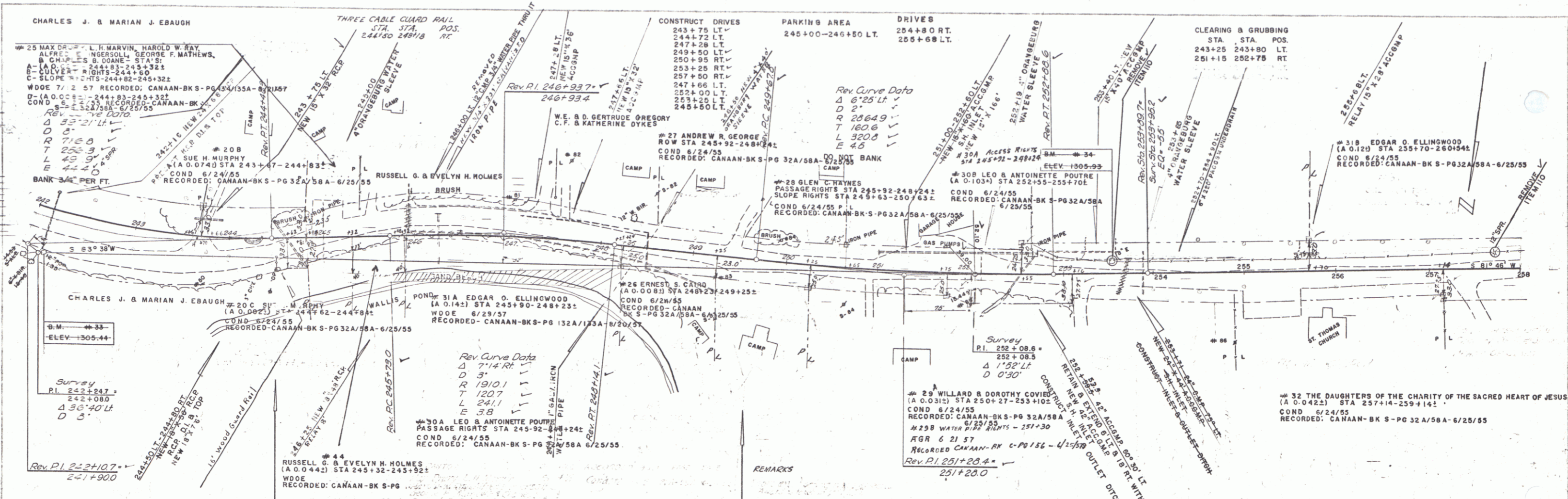
B.M. 32 - SPOT ON CONCRETE WALL 45' LT. STA. 233+95 ELEV. 1309.17

TRANSPLANTING TREES, SHRUBS & VINES, ITEM 632
THE FOLLOWING TREES SHALL BE MOVED UNDER THE ABOVE ITEM AS DIRECTED BY THE ENGINEER

STA.	OFFSET LT.	TREE
239+83	36	3" SPRUCE ✓
240+18	38	4" SPRUCE ✓
240+38	31	3" SPRUCE ✓
240+63	35	4" SPRUCE ✓
241+07	42	5" SPRUCE ✓
241+50	61	4" SPRUCE ✓
241+56	23	1 1/2" TWIN BIRCH ✓
242+41	49	4" SPRUCE ✓

Rev. Curve Data
 Δ 35'-21' LT.
 D 8'
 R 716.8
 T 256.3
 L 49.9
 E 44.4

241 CANAAN-AVERILL
 PROJECT NO. 209(4)
 SHEET 20 OF 101



SPALDING
WEBSTER-MARTIN INC. 7-54

DELANO
WEBSTER-MARTIN INC. 9-54

B.M. 33 - S. 1 R. 12 - W. 1/4 - POPLAR - 36' RT. - 242+10 - ELEV. 1305.44 B.M. 33-A R.L. Sta. 243+40 S.I.T. (Top) 10" Pop. Stump Elevation 1306.31

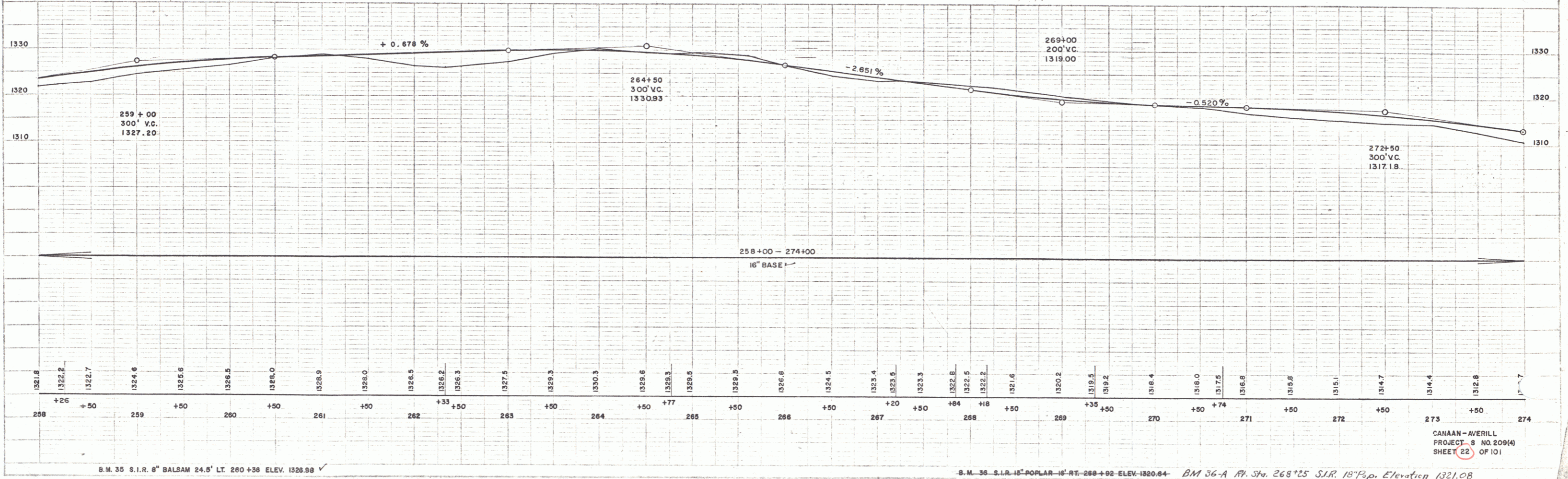
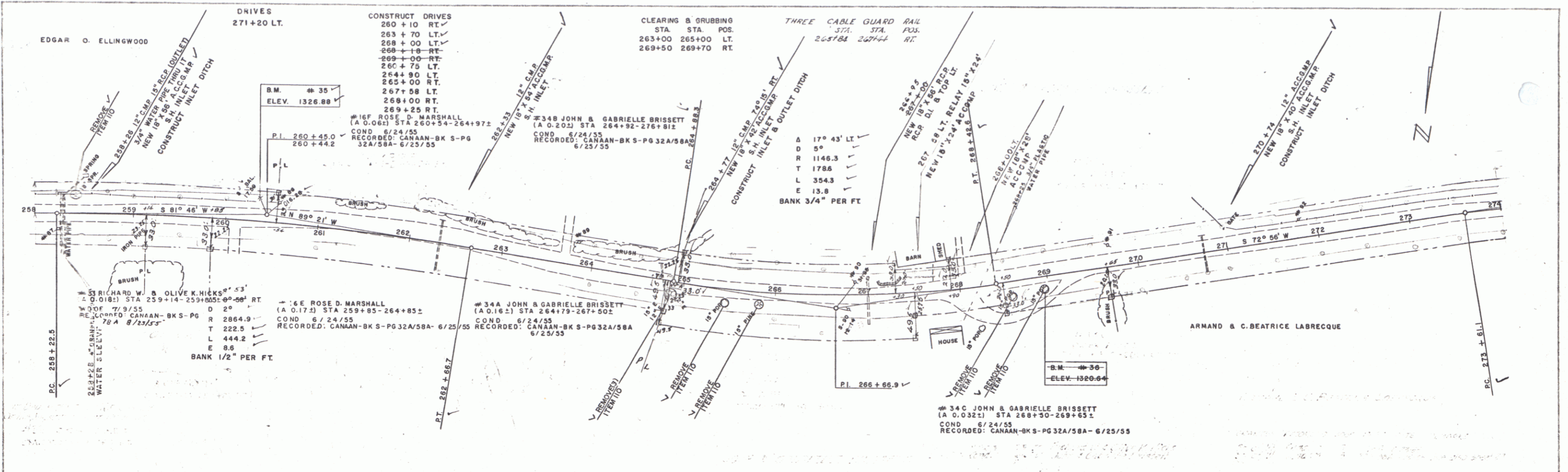
B.M. 34 - S. 1 R. 12 - W. 1/4 - ELM - 11' LT. - 255+55 - ELEV. 1305.93 B.M. 34-A R.L. Sta. 255+85 ROG Conc. Spig. Elev. 1315.10

CANAAN-AVERILL
PROJECT S NO 209(4)
SHEET (2) OF 101

9

PLAN
 SHEET NO. 22
 PROJECT NO. 2094
 DATE 6/25/55
 ENGINEER
 SURVEYOR
 WEBSTER-MARTIN INC. 7-54

DELANO
 WEBSTER-MARTIN INC. 7-54



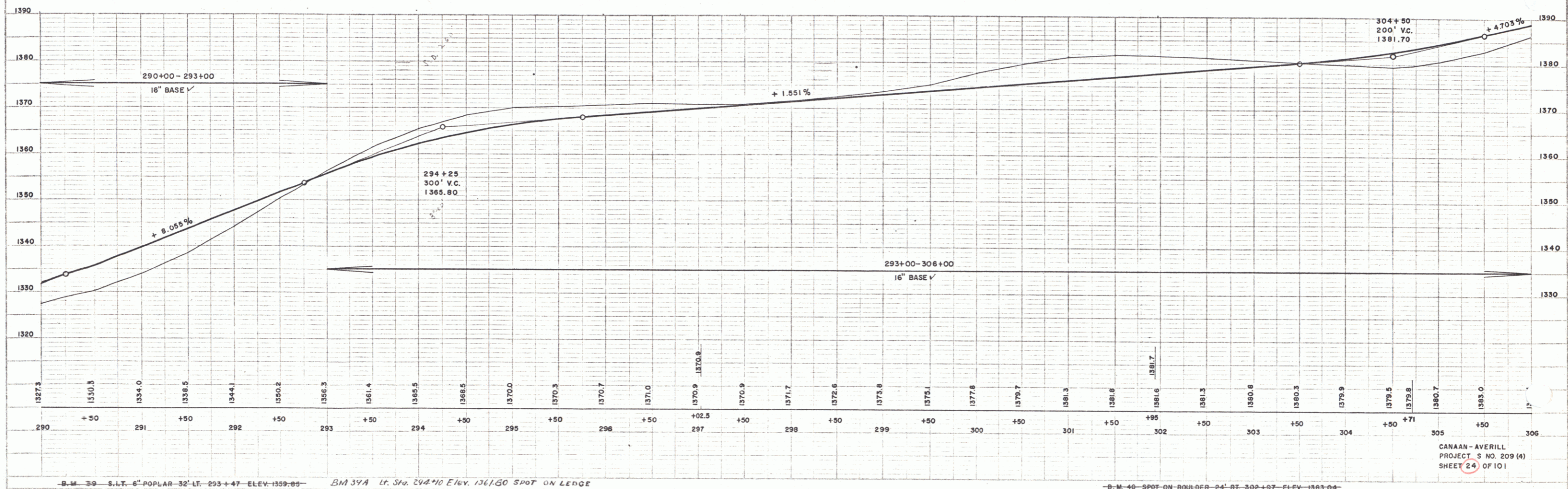
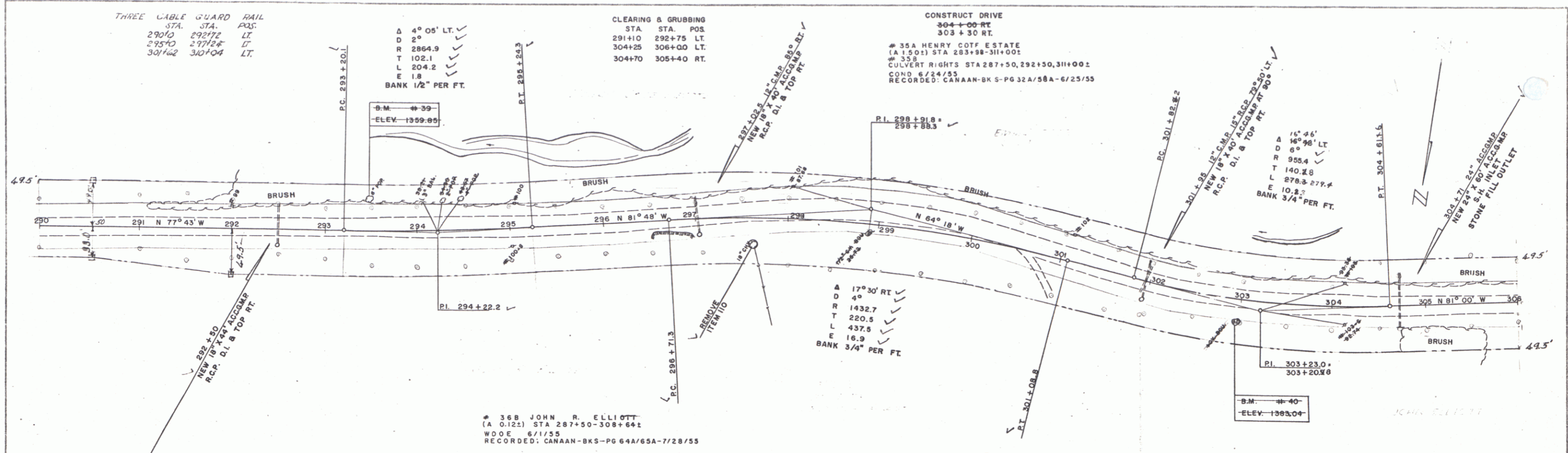
B.M. 35 S.I.R. 8\"/>

B.M. 36 S.I.R. 18\"/>

CANAAN-AVERILL
 PROJECT - 3 NO. 2094
 SHEET 22 OF 101

PLAN
 SHEET NO. 24
 PROJECT NO. 209 (4)
 DATE: 6/24/55
 ENGINEER: WEBSTER-MARTIN INC.

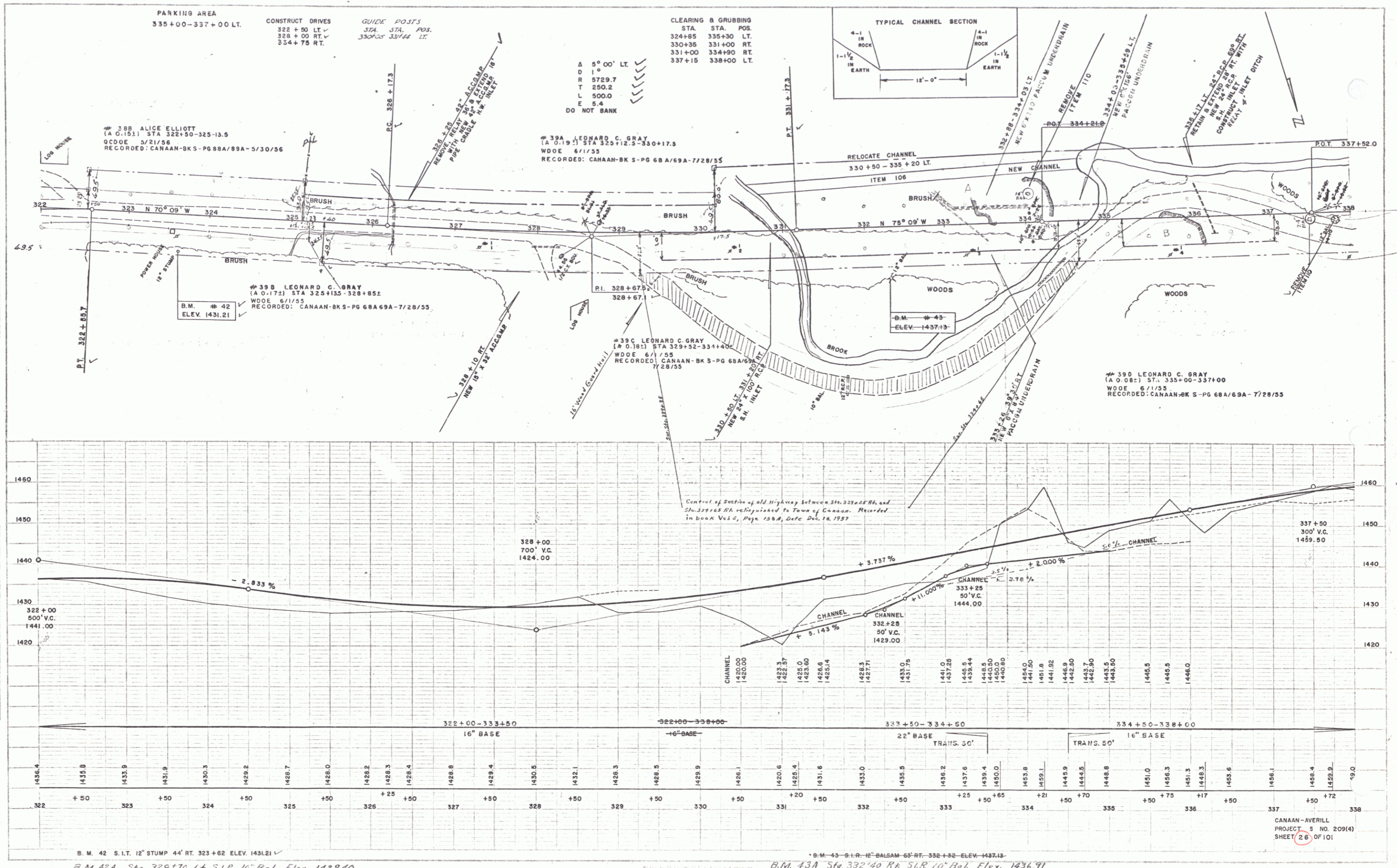
PROFILE
 SHEET NO. 24
 PROJECT NO. 209 (4)
 DATE: 6/24/55
 ENGINEER: WEBSTER-MARTIN INC.



CANAAN-AVERILL
 PROJECT NO. 209 (4)
 SHEET 24 OF 101

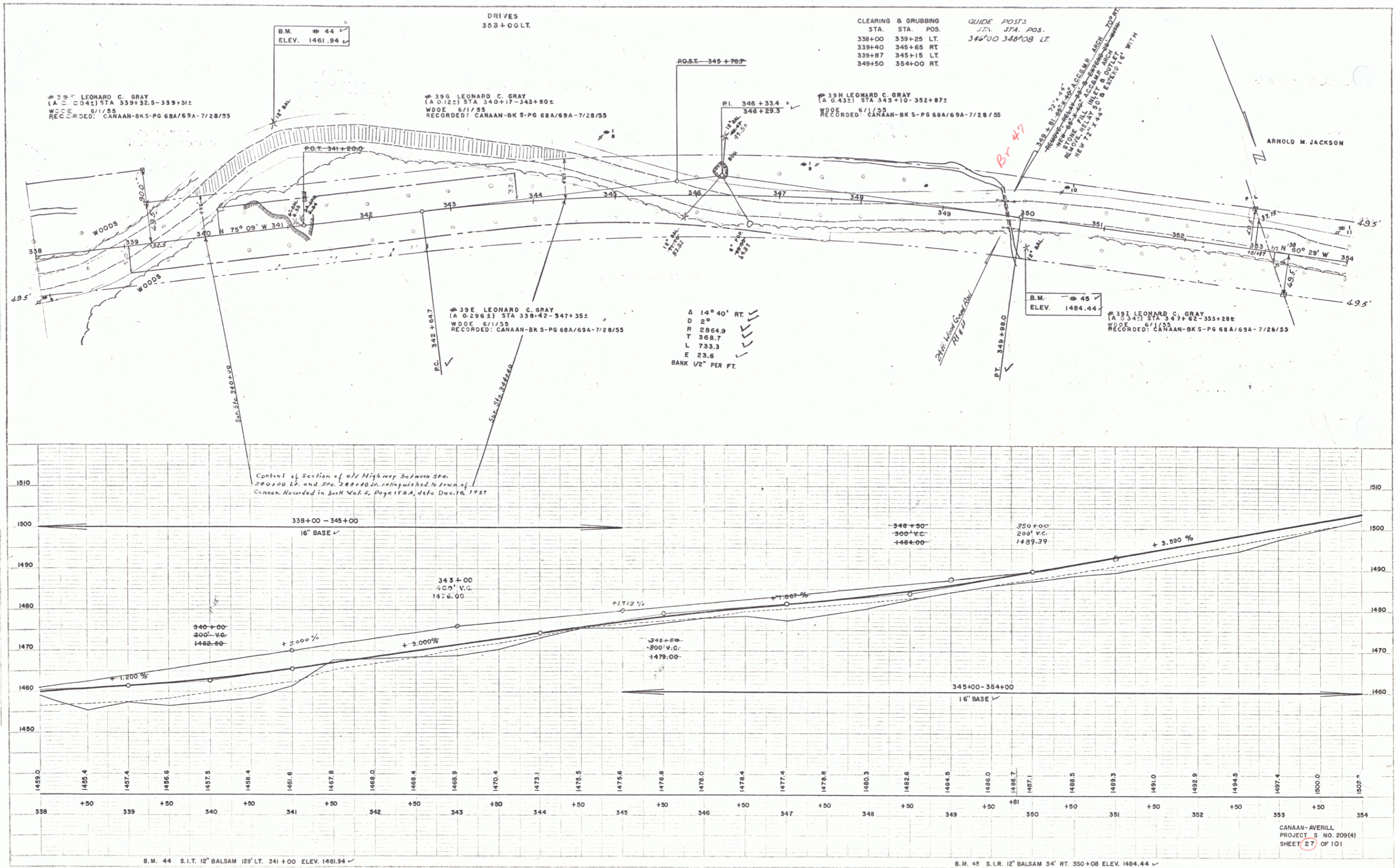
PLAN
 SPALDING
 WEBSTER-MARTIN INC. B-54
 1000 WEST 10TH AVENUE
 DENVER, COLORADO 80202
 PHONE 733-1111
 FAX 733-1112

PLAN
 SPALDING
 WEBSTER-MARTIN INC. B-54
 1000 WEST 10TH AVENUE
 DENVER, COLORADO 80202
 PHONE 733-1111
 FAX 733-1112



SPALLING
WESTERN MARTIN, INC. 6-54
DATE BOOK
NO.

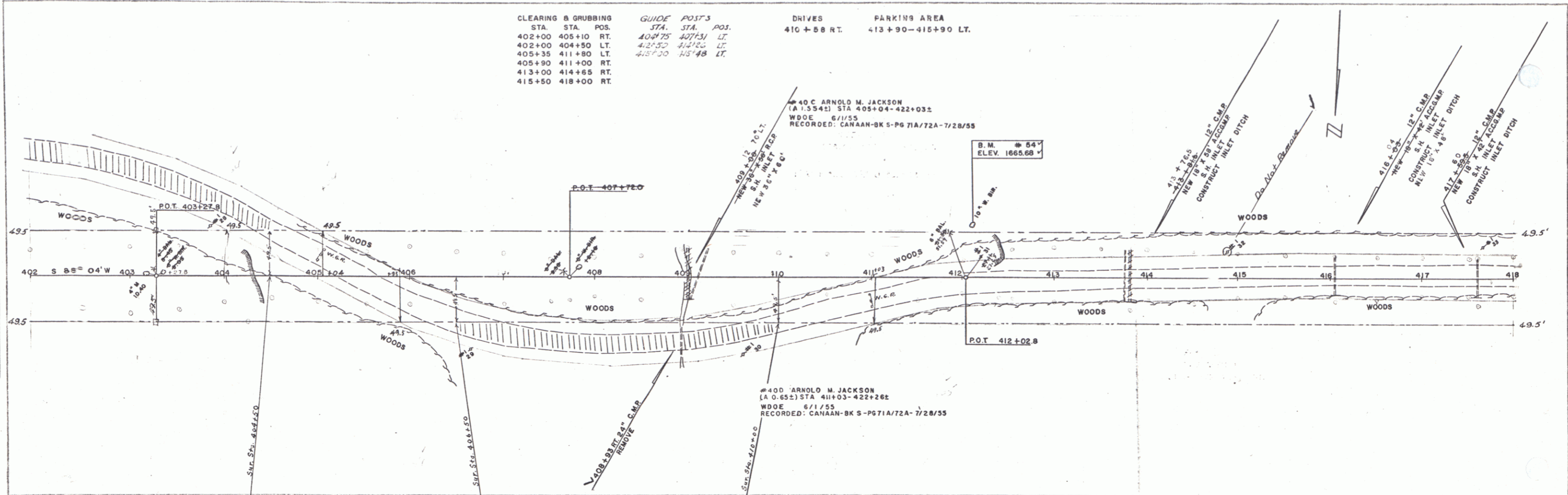
WESTERN MARTIN, INC. 6-54
DATE BOOK
NO.



PLAN
 SHEET NO. 31
 PROJECT NO. 209(4)
 SHEET 31 OF 101

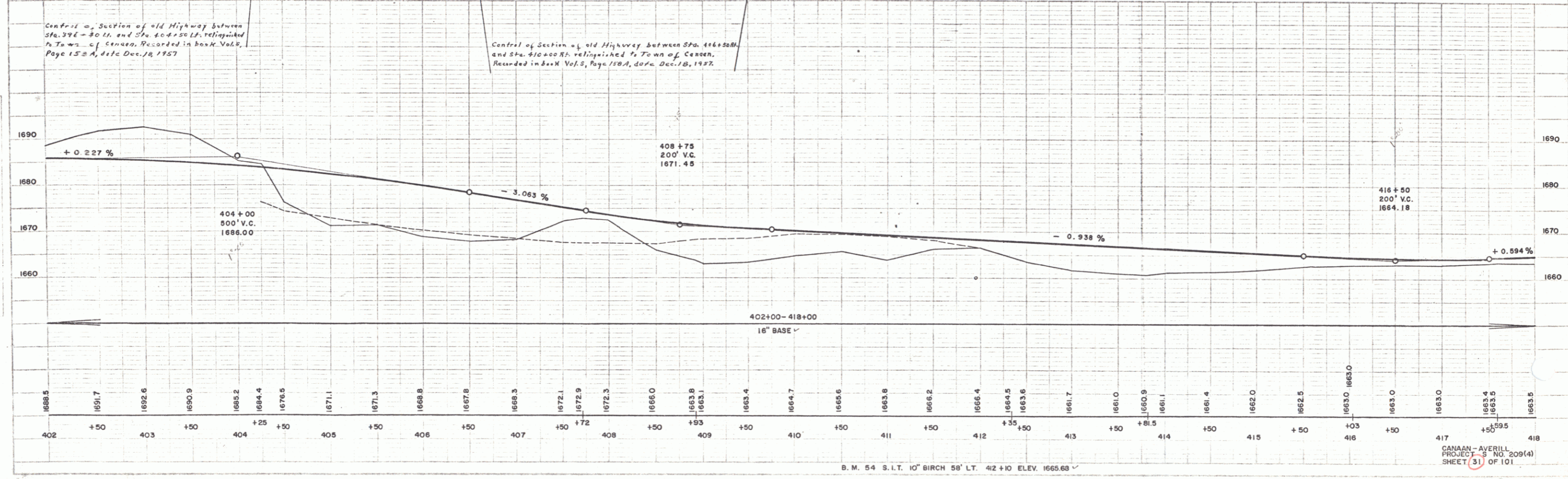
B-54
 WEBSTER-MARTIN, INC.

CLEARING & GRUBBING			GUIDE POSTS			DRIVES		PARKING AREA	
STA.	STA.	POS.	STA.	STA.	POS.				
402+00	405+10	RT.	404+75	407+31	LT.	410+58 RT.	413+90-415+90	LT.	
402+00	404+50	LT.	425+50	424+50	LT.				
405+35	411+80	LT.	425+00	424+48	LT.				
405+90	411+00	RT.							
413+00	414+65	RT.							
415+50	418+00	RT.							



Center of Section of old Highway between Sta. 396-30 ft. and Sta. 404+50 ft. relinquished to Town of Casco, Recorded in book Vol. 2, Page 152 A, date Dec. 18, 1927

Center of Section of old Highway between Sta. 406+50 ft. and Sta. 410+00 ft. relinquished to Town of Casco, Recorded in book Vol. 2, Page 152 A, date Dec. 18, 1927



CANAAN-AVERILL
 PROJECT NO. 209(4)
 SHEET 31 OF 101

PLAN
 SPALDING
 WEBSTER-MARTIN INC. 8-54
 WHITE BIRCH 12" S.I.R. 68' LT. STA. 419+14 ELEV. 1663.04
 B.M. # 55
 ELEV. 1663.04

PROFILE
 SPALDING
 WEBSTER-MARTIN INC. 8-54
 WHITE BIRCH 12" S.I.R. 68' LT. STA. 419+14 ELEV. 1663.04
 B.M. # 55
 ELEV. 1663.04

