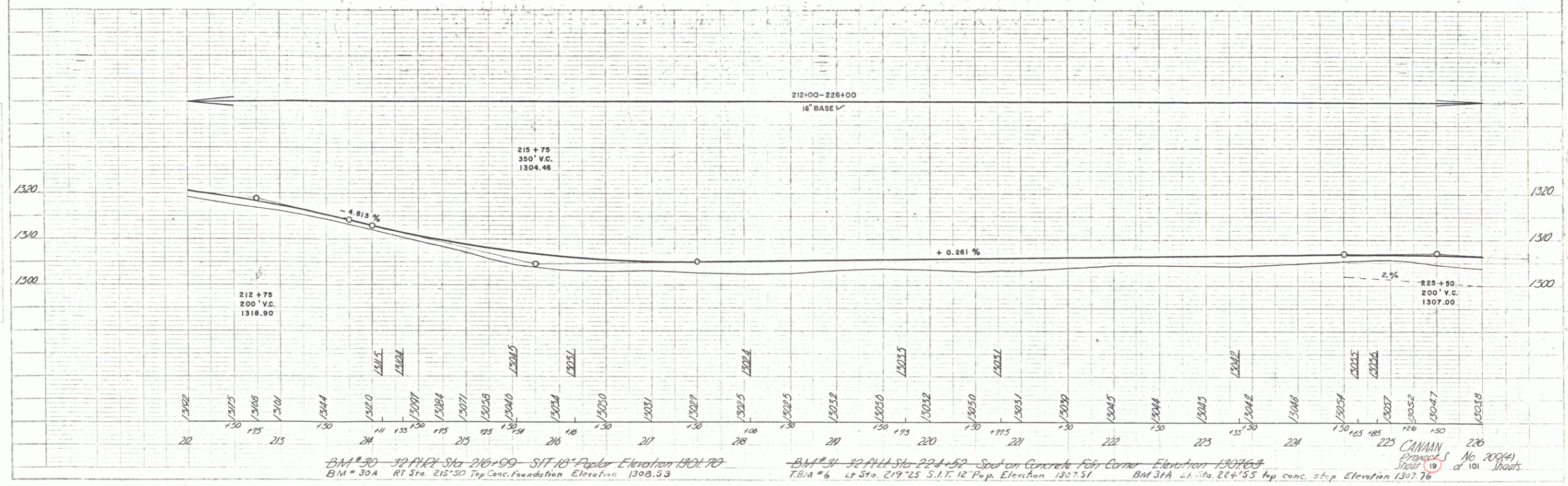
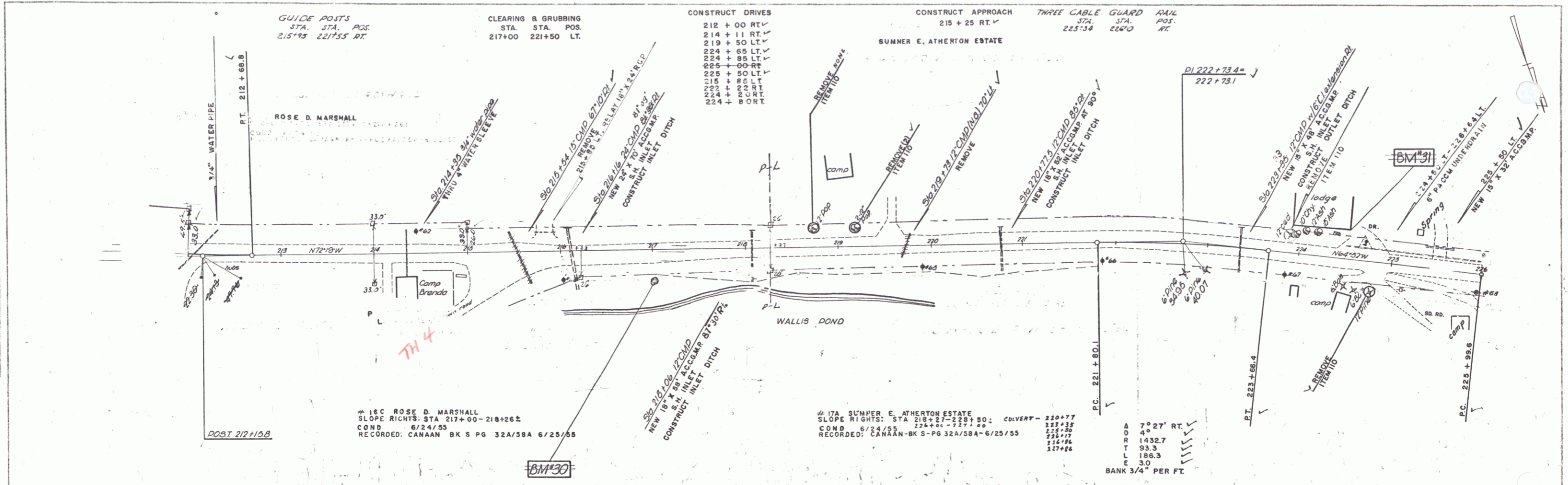


PLAN
 DATE: 6/24/55
 DRAWN BY: L. Palmer
 CHECKED BY: H. Wiley

PROFILE
 DATE: 6/24/55
 DRAWN BY: L. Palmer
 CHECKED BY: E. White



BM # 30 - 32' P.H. Sta. 216+99 - SHT. 13' Peg. Elevation 1301.70
 BM # 30A - RT Sta. 215+50 Top Conc. Foundation Elevation 1308.53
 BM # 31 - 32' P.H. Sta. 224+52 - Spot on Concrete Fair Corner Elevation 1307.69
 T.B.M. # 6 - Lt Sta. 219+25 S.I.T. 12' Peg. Elevation 1307.51
 BM 31A - Lt Sta. 224+55 top conc. step Elevation 1307.76