

PLAN
 LAVIN WEBSTER-MARTIN INC. 8-49
 1000 AVENUE C
 CANAAN, VT. 05589
 DATE: 8-18-54
 BY: J. B. MARABELL

PROFILE
 LAVIN WEBSTER-MARTIN INC. 8-49
 1000 AVENUE C
 CANAAN, VT. 05589
 DATE: 8-18-54
 BY: J. B. MARABELL

CLEARING & GRUBBING
 STA. STA. POS.
 146+75 150+40 RT
 149+20 151+00 LT
 150+75 151+00 RT

TBM #1
 ELEV 1437.44

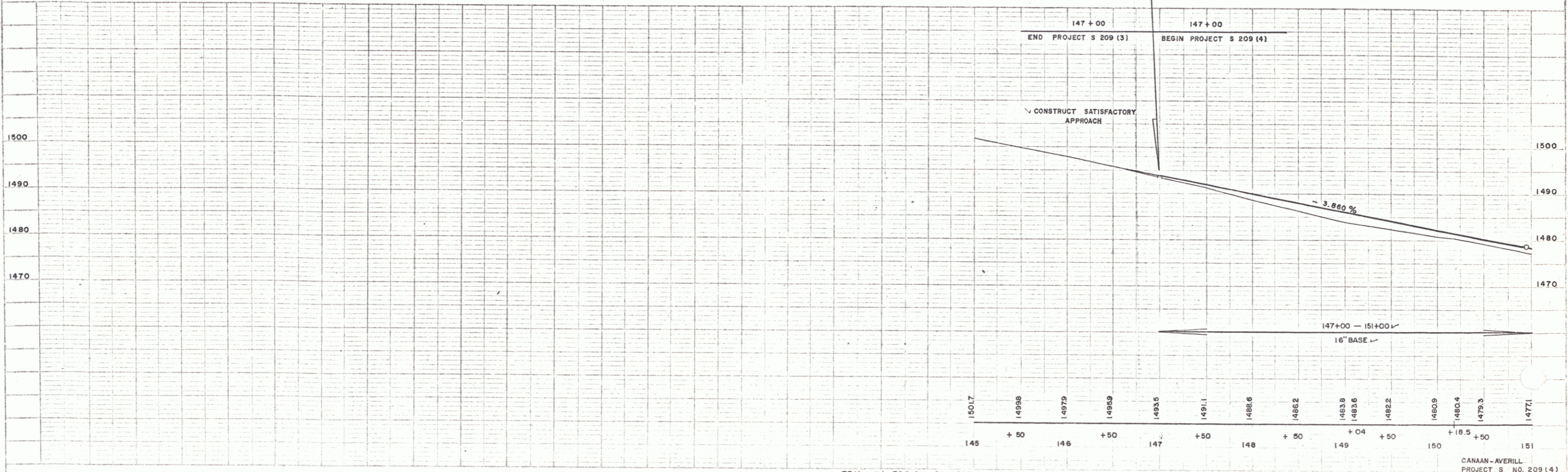
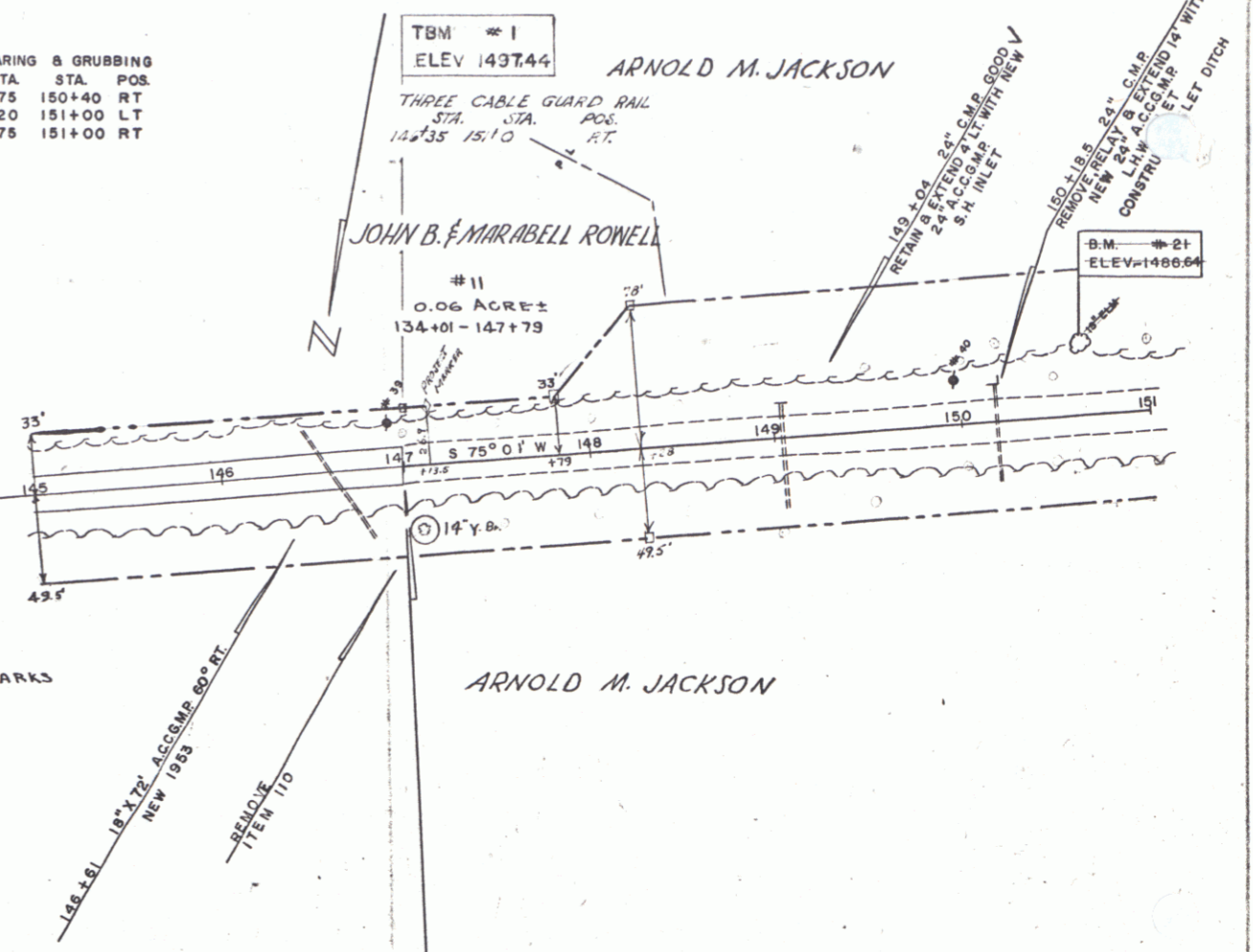
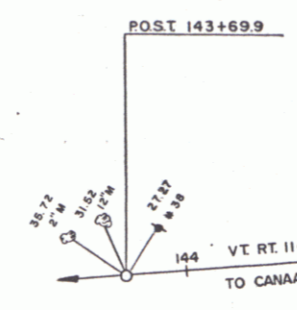
ARNOLD M. JACKSON

JOHN B. MARABELL ROWELL

#11
 0.06 ACRES ±
 134+01 - 147+79

B.M. #21
 ELEV=1486.64

RECORDED
 PARCEL KIND DATE GRANTOR GRANTEE BOOK PAGE DATE REMARKS
 #11 W.D.O.E 4-28-54 John B. & Marabell Rowell St. of VT. Vol. R 553 6-18-54



TBM #1 TOP PIN BOUNDARY LT STA 147+00 ELEV 1497.44 B.M. #21 16\"/>

CANAAN-AVERILL
 PROJECT S NO. 209 (4)
 SHEET 14 OF 101