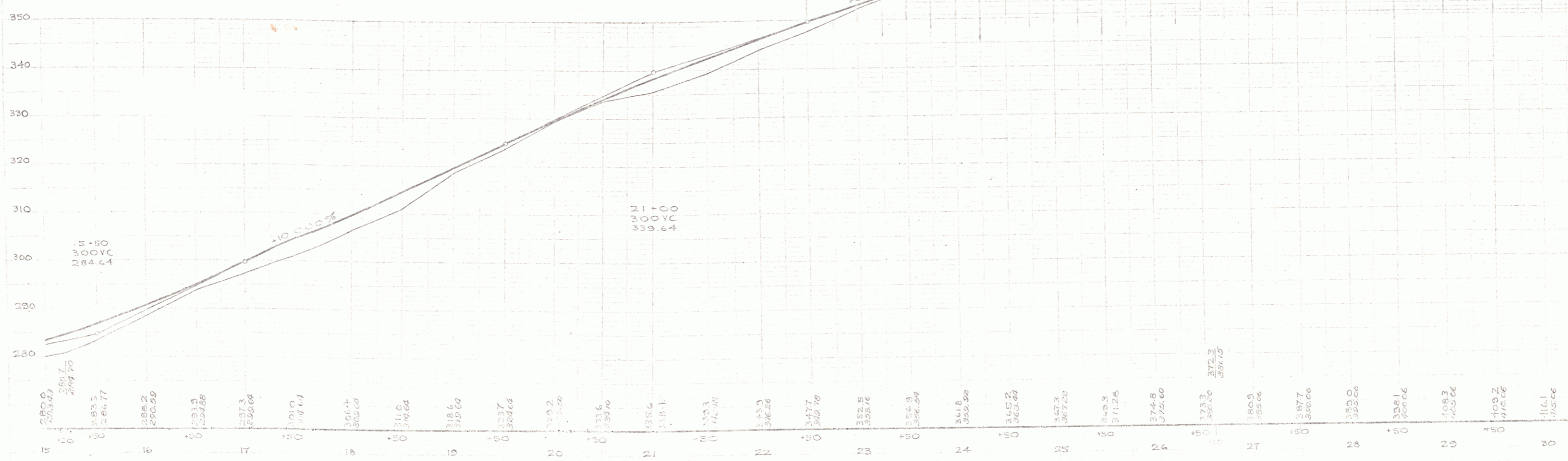
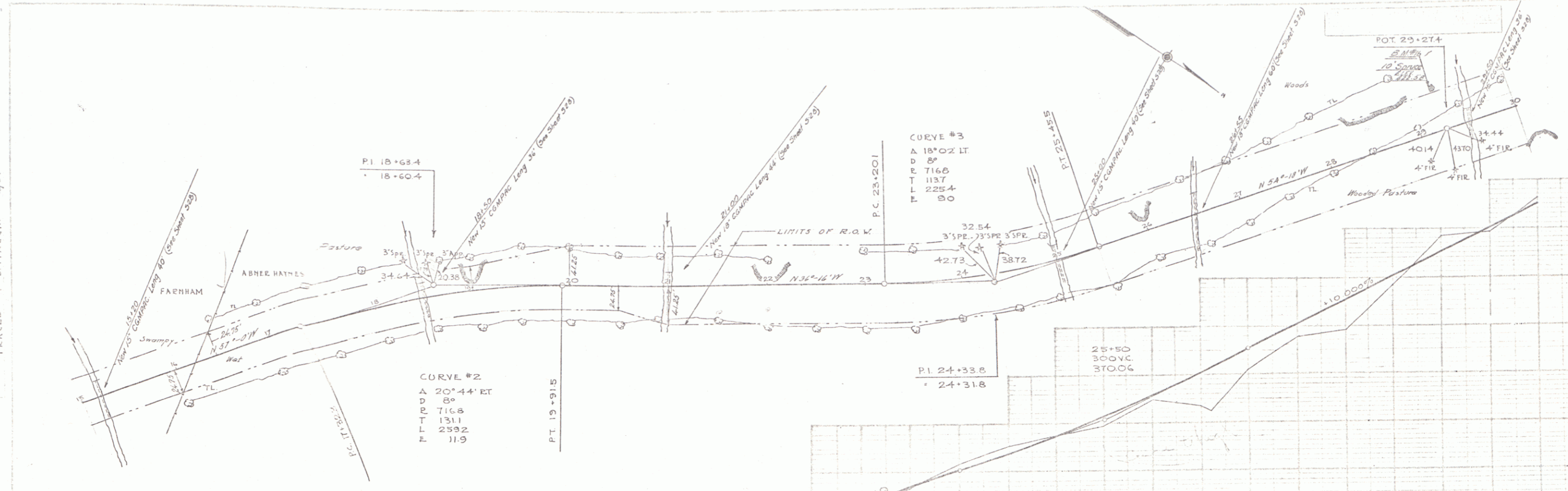


PLAN
 1934
 PUTNAM
 PUTNAM
 TRACED D. MACCHI W/34

PLAN
 1934
 PUTNAM
 PUTNAM



B.M. 4.6 Stake in root of 10 Spruce 45' LT of Sta. 29+25 Elev. 421.58

CANADIAN
 ALL VERMONT ROUTE
 SHEET 2