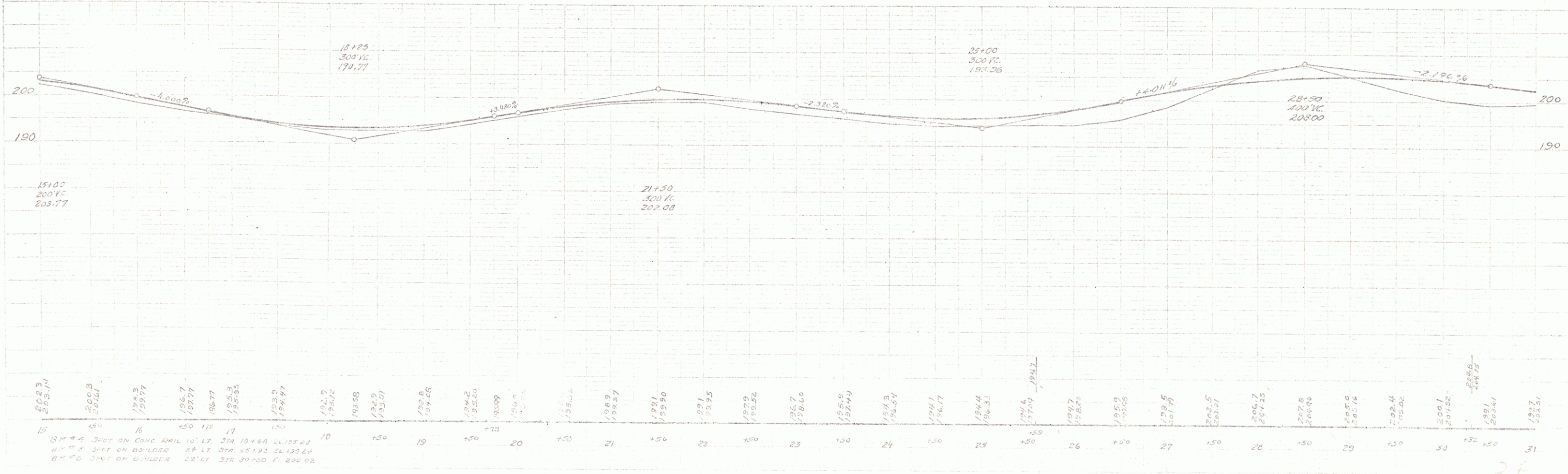
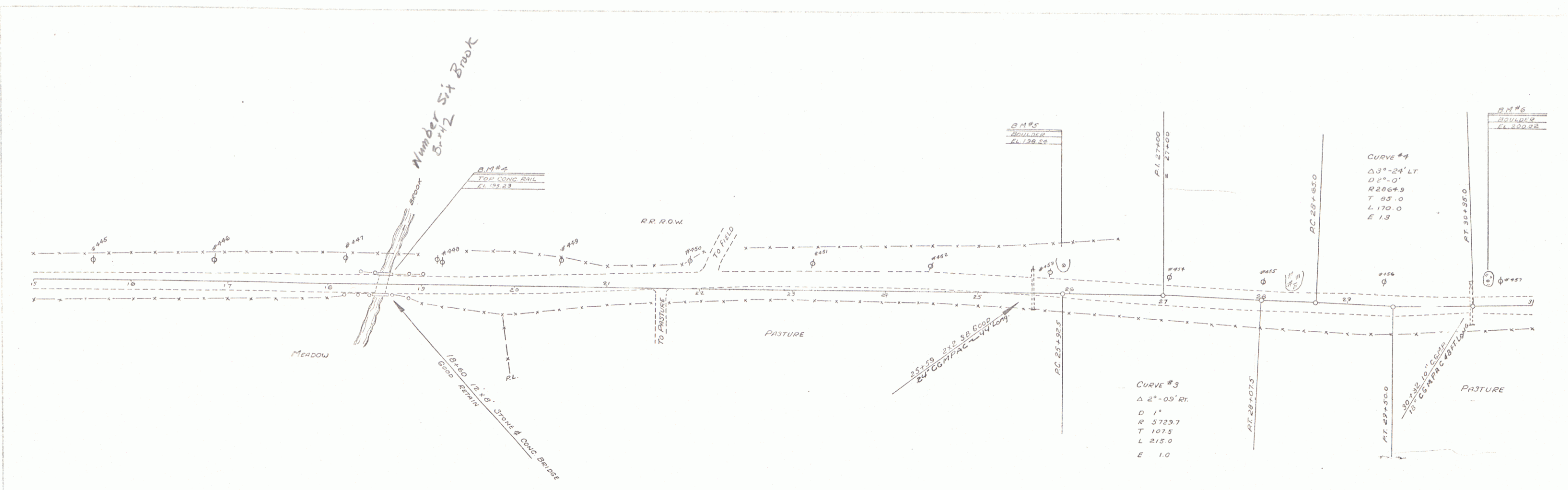




PLN  
 DATE  
 DRAWN  
 CHECKED  
 7-29-08

15102  
 200 YC  
 203.77



15	16	17	18	19	20	21	22	23	24	25	26	27	28	29	30	31
15102	15103	15104	15105	15106	15107	15108	15109	15110	15111	15112	15113	15114	15115	15116	15117	15118
203.77	203.77	203.77	203.77	203.77	203.77	203.77	203.77	203.77	203.77	203.77	203.77	203.77	203.77	203.77	203.77	203.77

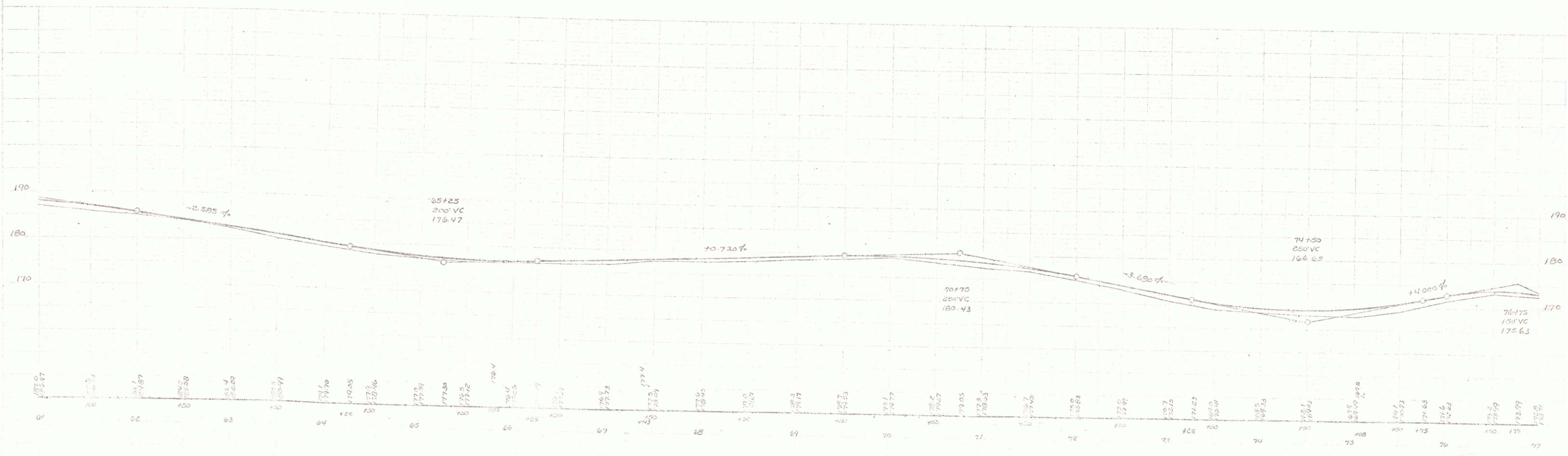
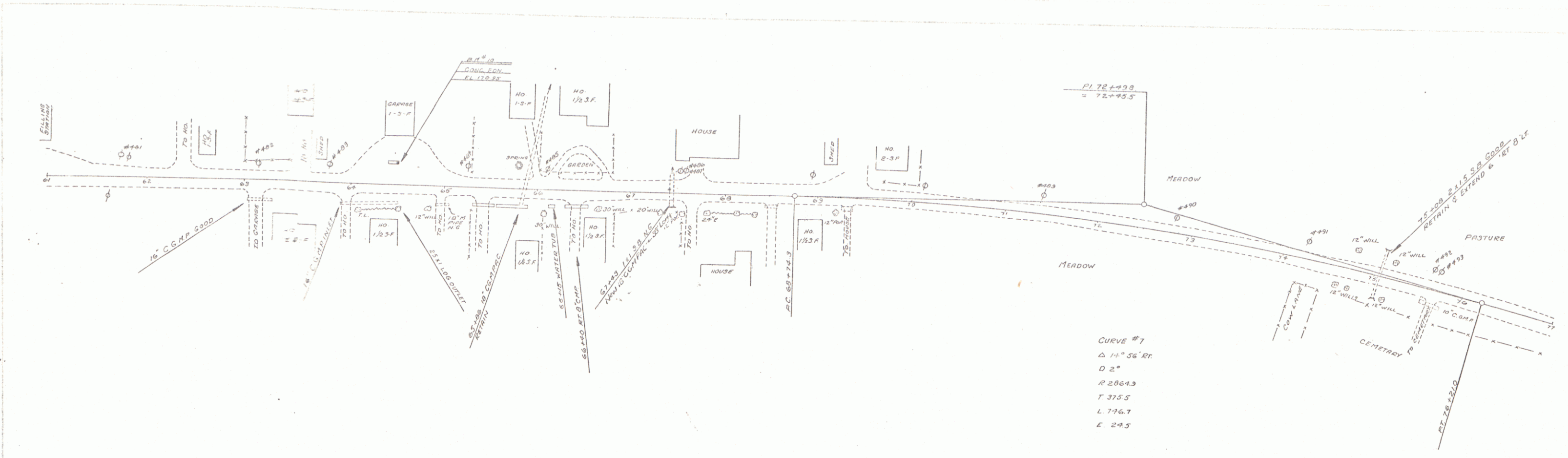
NORTH BOLLER CORNER HIGHWAY  
 SHEET 2





7-38  
 PUTNAM  
 CLERK  
 7-38

7-38  
 PUTNAM  
 CLERK  
 8-138



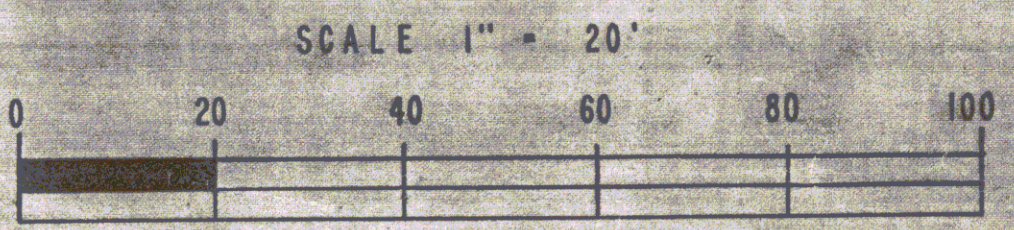
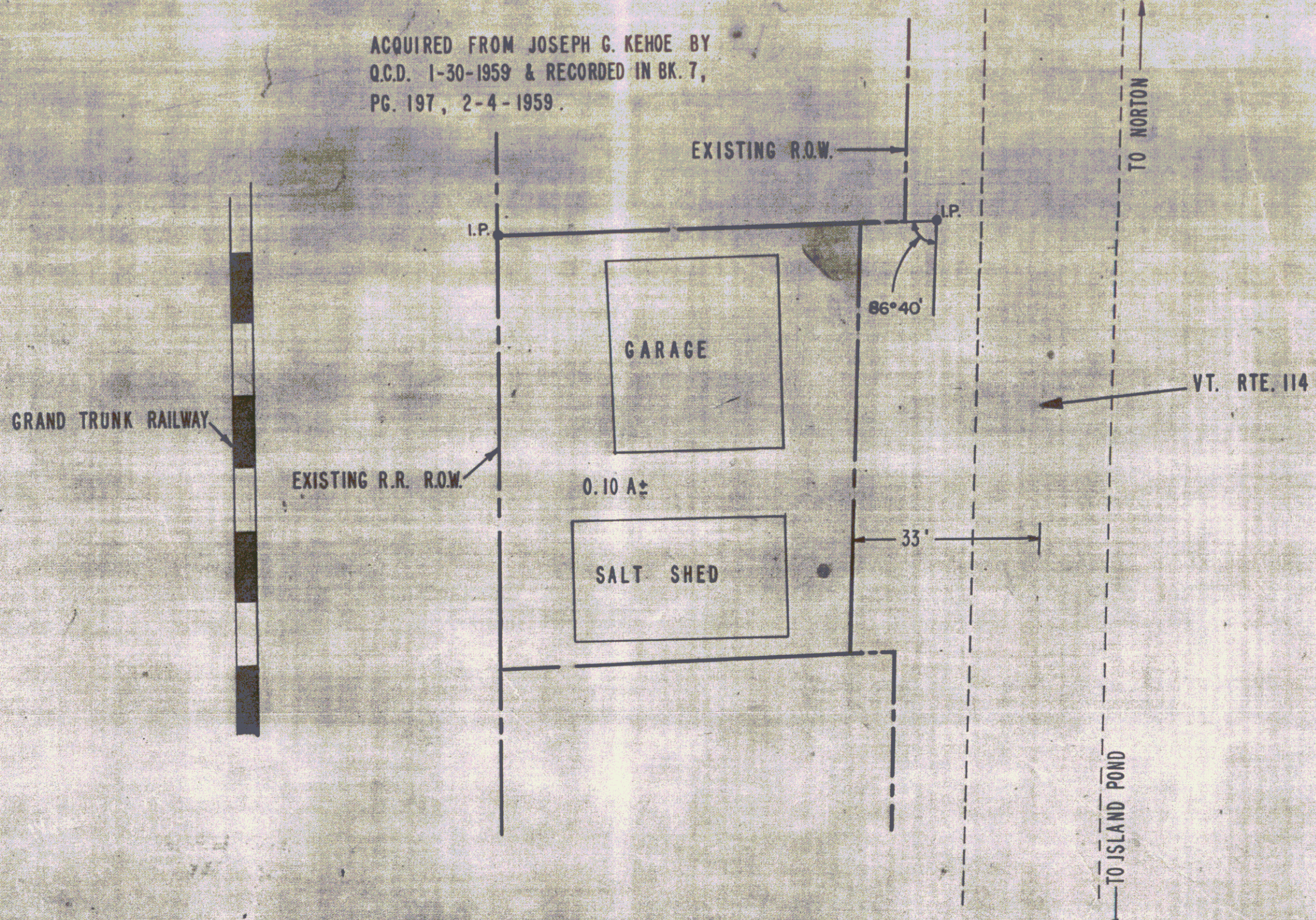
B.M. #10 SPOT ON GAS PUMP FOUNDATION 20' LT. 378 644.88 EL. 174.35

6A  
 NORTON ROLLING COASTER HIGHWAY  
 SHEET 5



PROPERTY LOCATED 0.6 MILES SOUTH OF JUNCTION OF VT. RTE. 22 & VT. RTE. 114, ON VT. RTE. 114

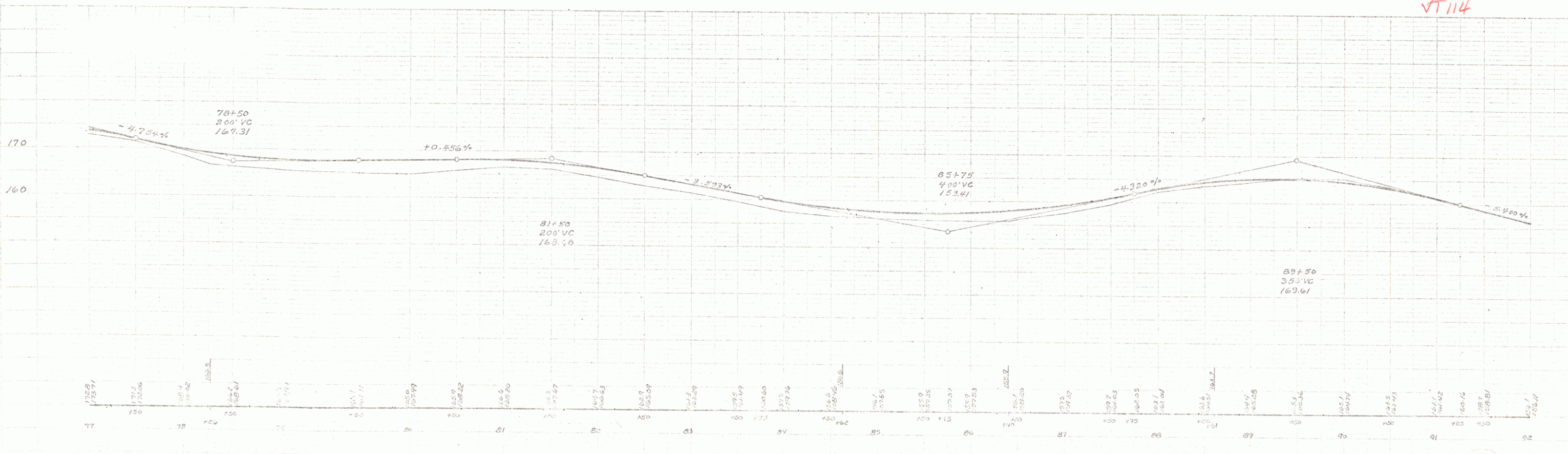
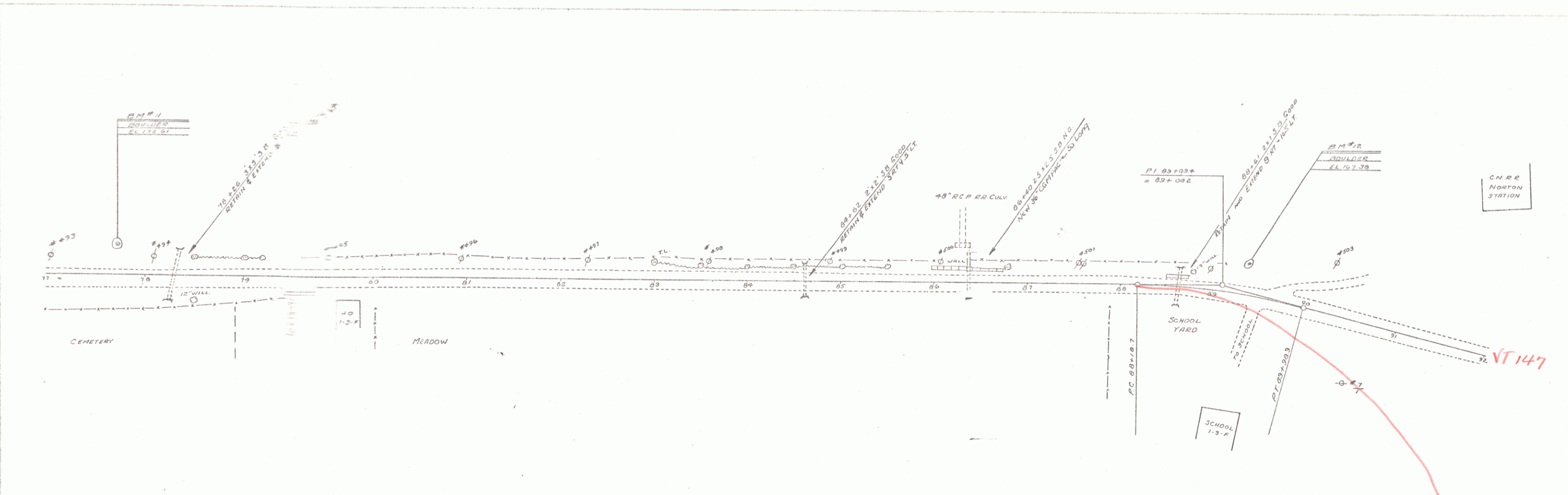
ACQUIRED FROM JOSEPH G. KEHOE BY  
Q.C.D. 1-30-1959 & RECORDED IN BK. 7,  
PG. 197, 2-4-1959.



STATE OF VERMONT  
DEPT. OF HIGHWAYS  
SHEET 5B  
TOWN OF NORTON  
VT. RTE. 114 MAINT. AREA 6A  
APPROX. SCALE 1"=20' DATE 7-27-76 DRAWN BY KDP

PLAN  
 DATE: 10/1/54  
 DRAWN BY: [illegible]  
 CHECKED BY: [illegible]

PROFILE  
 DATE: 7-30-54  
 DRAWN BY: [illegible]  
 CHECKED BY: [illegible]



37-388-33 960000 29-12-37A 77107 5-

NORTON ROLLER CORSEY HIGHWAY  
 SHEET 16

