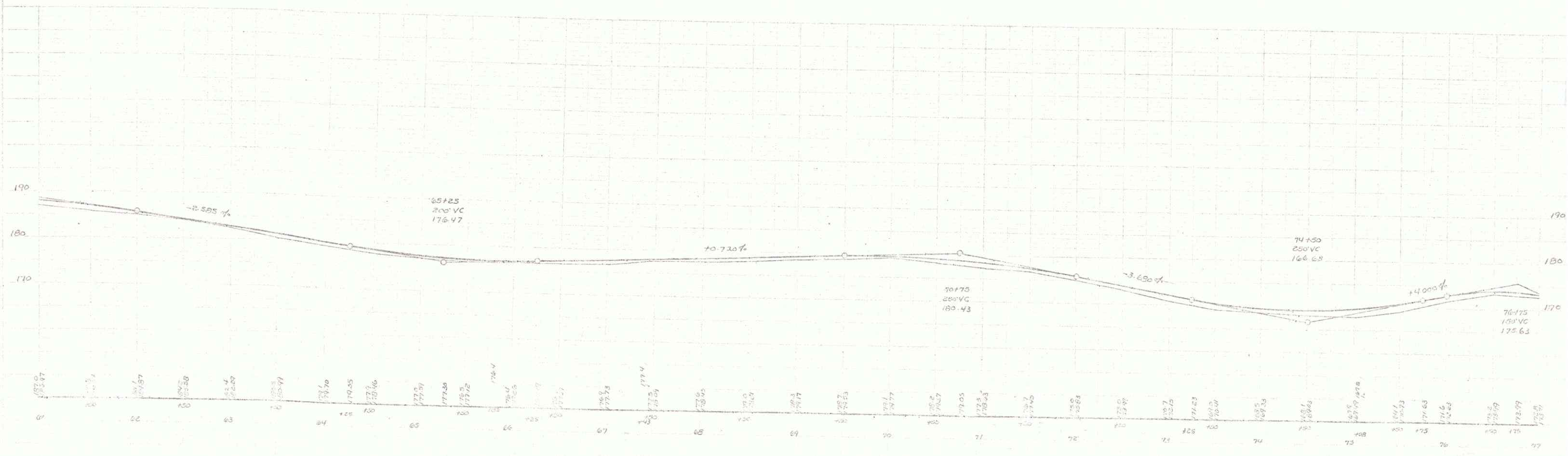
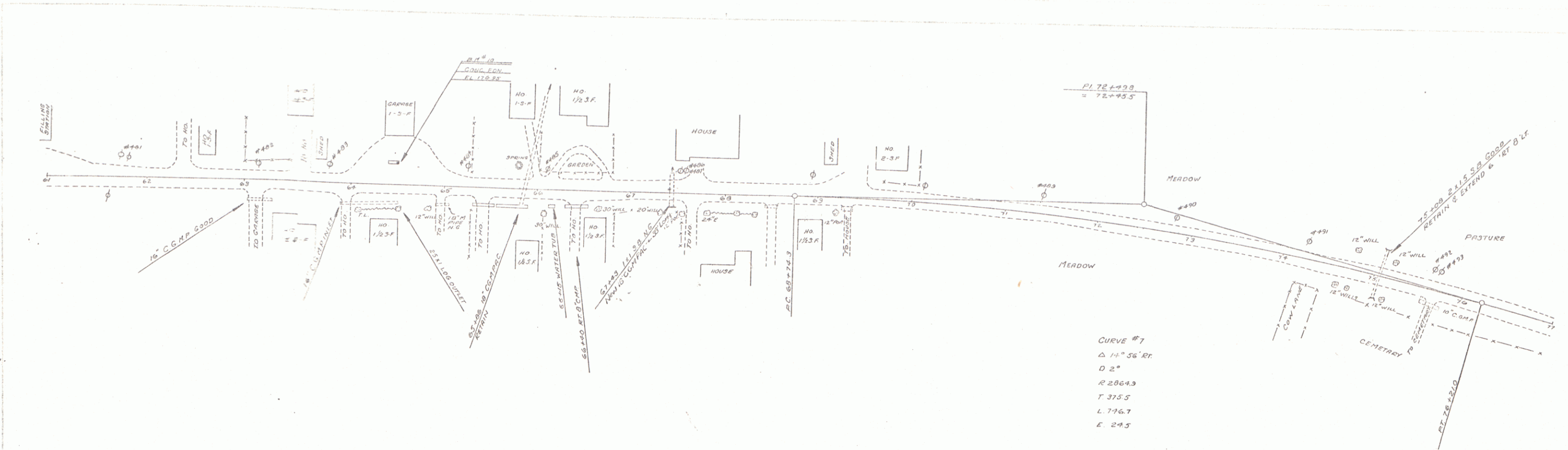


7-38  
 PUTNAM  
 CLERK  
 7-38

7-38  
 PUTNAM  
 CLERK  
 8-138



B.M. #10 STAFF ON GAS PUMP FOUNDATION 20' LT. 378 644.88 EL. 174.35

NORTON ROLLING COASTER HIGHWAY  
 SHEET 5

5