

INDEX OF SHEETS

1.	Title	
2.	Typical (2") Bituminous Concrete Pavement	
3.	Drainage and Item Quantity Sheet	
4-5.	Earthwork Sheet	
6.	ROW Detail Sheet	
7-9.	Plan and Profile Sheets	
10.	A-61 Solid Rock Excavation	8/7/67 R
11.	B-1 Banking Tables	7/17/67 R
12.	B-5 Typical Slope Grading	3/10/65
13.	B-10 Embankment on a Slope	4/19/65 R
14.	D-2 Underdrain and Headwalls	3/10/65
15.	D-3 Gutters	7/19/67 R
16.	D-4 Flashing Basins	12/4/68 R
17.	E-31 Fed. Aid Const. Identification Signs	3/21/67 R
18.	E-32 Road Construction Approach Signs	1/6/67
19.	E-34 On-Project Construction Signs	5/3/67 R
20.	G-1a Std. St. Beam GR w/St. Posts (Mod.)	4/28/70 R
21.	G-4 St. Marker Posts & St. Guide Posts	12/30/65 R
22.	J-1 Project and Boundary Markers	3/10/65
23-22.	Mainline Cross Sections	
23.	Mainline Banking Diagrams	
24-26.	TH #9 and TH #40 Cross Sections	

STATE OF VERMONT
DEPARTMENT OF HIGHWAYS
PROPOSED IMPROVEMENT
FEDERAL AID SECONDARY PROJECT

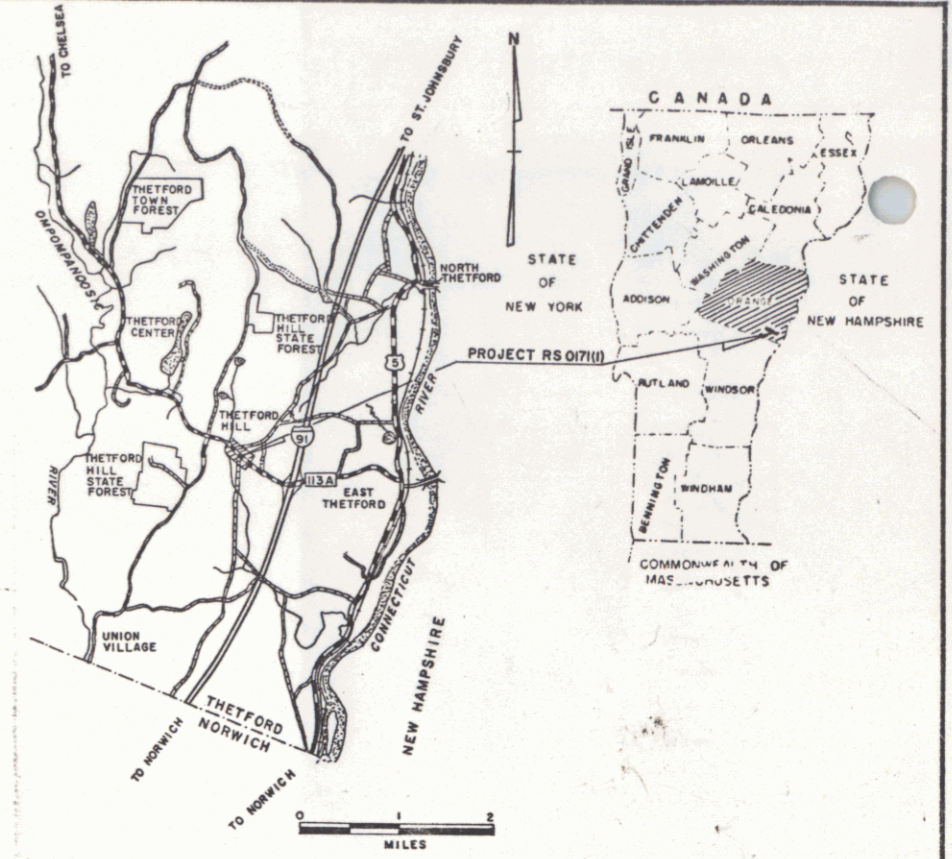
TOWN OF THETFORD
COUNTY OF ORANGE
E. THETFORD-CHelsea ROAD
VERMONT ROUTE 113

PROJECT NAME & NUMBER TYPE PAVEMENT AREA
THETFORD RS 0171(1) BITUMINOUS CONCRETE 3,667 S.Y.
RECORD PLANS
MATERIALS

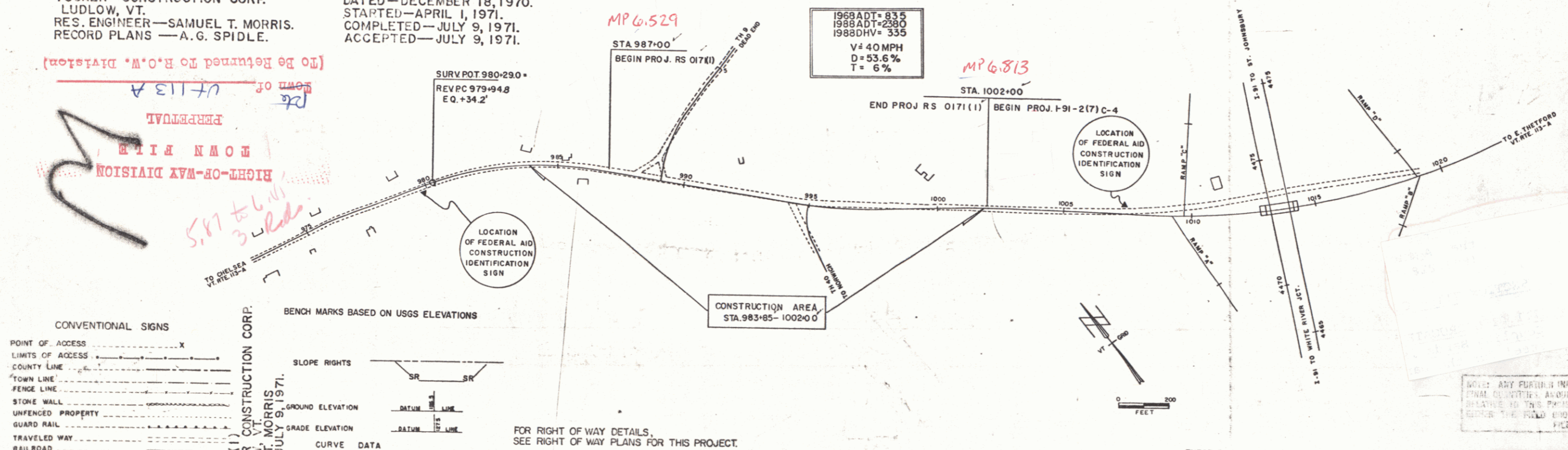
SUBBASE OF GRAVEL—MILLER PIT—NORWICH, VT.
SUBBASE OF SAND—LA MOUNTAIN PIT—THETFORD, VT.
PLANT MIXED BASE COURSE (213)—L.M. PIKE, PLANT 803—THETFORD, VT.
TACK COAT, TYPE III—ATLANTIC OIL CO.—ALBANY, N.Y.
BITUMINOUS CONCRETE—L.M. PIKE, PLANT 804—LEBANON, N.H.
METAL CULVERT PIPE—NORTHEASTERN CULVERT CORP.—WESTMINSTER, VT.
C.I. COVER FOR FL. BASIN—E.L. LEBARON FOUNDRY CO.—PROCKTON, MA.
GUARD RAIL & EROSION CONTROL ITEMS—S.T. GRISVOLD & CO., INC.—WILLISTON, VT.
CONTRACTOR
TUCKER CONSTRUCTION CORP.
LUDLOW, VT.
RES. ENGINEER—SAMUEL T. MORRIS.
RECORD PLANS—A.G. SPIDLE.

CONTRACT
DATED—DECEMBER 18, 1970.
STARTED—APRIL 1, 1971.
COMPLETED—JULY 9, 1971.
ACCEPTED—JULY 9, 1971.

BEGINNING AT A POINT APPROXIMATELY 6.6 MILES SOUTHEASTERLY OF THE WEST FAIRLEE-THETFORD TOWN LINE AND EXTENDING SOUTHEASTERLY 0.284 MILE.
LENGTH OF PROJECT 1500 FEET = 0.284 MILE



(To Be Returned To R.O.M. Division)
Form of 113 A
THETFORD
COUNTY OF ORANGE
VERMONT



CONVENTIONAL SIGNS

POINT OF ACCESS	X
LIMITS OF ACCESS	—
COUNTY LINE	—
TOWN LINE	—
FENCE LINE	—
STONE WALL	—
UNFENCED PROPERTY	—
GUARD RAIL	—
TRAVELED WAY	—
RAILROAD	—
RETAINING WALL	—
CENTER LINE	—
SURVEY LINE	—
CULVERT	—
DROP INLET	—
TROLLEY POLE	—
POWER POLE	—
TELEPHONE POLE	—
TREES	—
HEDGE	—
F.A. CONSTRUCTION IDENTIFICATION SIGNS	A

BENCH MARKS BASED ON USGS ELEVATIONS

SLOPE RIGHTS

GROUND ELEVATION

GRADE ELEVATION

DEFLECTION OF ANGLE

DEGREE OF CURVE

RADIUS OF CURVE

TANGENT DISTANCE

LENGTH OF CURVE

EXTERNAL DISTANCE

POINT OF INTERSECTION

POINT OF CURVE

POINT OF TANGENT

POINT ON TANGENT

POINT ON SUB-TANGENT

ROW LIMITS

FOR RIGHT OF WAY DETAILS, SEE RIGHT OF WAY PLANS FOR THIS PROJECT.

THESE PLANS ARE SUBJECT TO SUCH REVISIONS, AS MAY BE REQUIRED BY THE FEDERAL HIGHWAY ADMINISTRATION OR THE CHIEF ENGINEER.
CONSTRUCTION IS TO BE CARRIED ON IN ACCORDANCE WITH THESE PLANS AND THE STANDARD SPECIFICATIONS FOR HIGHWAY AND BRIDGE CONSTRUCTION DATED APRIL 1964, AS APPROVED BY THE BUREAU OF PUBLIC ROADS ON OCTOBER 12, 1964, INCLUDING ALL SUBSEQUENT APPROVED REVISIONS AND SUCH REVISED SPECIFICATIONS AND SPECIAL PROVISIONS AS ARE INCORPORATED IN THESE PLANS.

APPROVED <i>W.M. Smith</i> SECONDARY ENGINEER DATE 15 Oct 1969	APPROVED <i>W. Chan</i> DISTRICT ENGINEER DATE 10/15/69	APPROVED <i>S.P. Jenkins</i> CONSTRUCTION ENGINEER DATE 16 Oct 69	APPROVED <i>S.P. Jenkins</i> DIRECTOR ROW DEPT. DATE 16 Oct 69	APPROVED <i>G.M. Lane</i> HIGHWAY ENGINEER DATE 10/15/69	APPROVED <i>E.H. Ostry</i> ASST. DIR. OF HIGHWAYS DATE 10/15/69	APPROVED <i>W.C. ...</i> DATE 10/15/69
--	---	---	--	--	---	---

DEPARTMENT OF TRANSPORTATION
FEDERAL HIGHWAY ADMINISTRATION

APPROVED *Pin 00R456*

DIVISION ENGINEER DATE

PROJECT **RS** NO. **0171(1)**

DATE **Oct 16, 1969**

SHEET **1** OF 36 SHEETS

CONSTRUCT DRIVE
 Lt Rt
 985+60 986+90
 986+60
 992+50
 Appr POT 989+08.2
 989+08.1 Lt

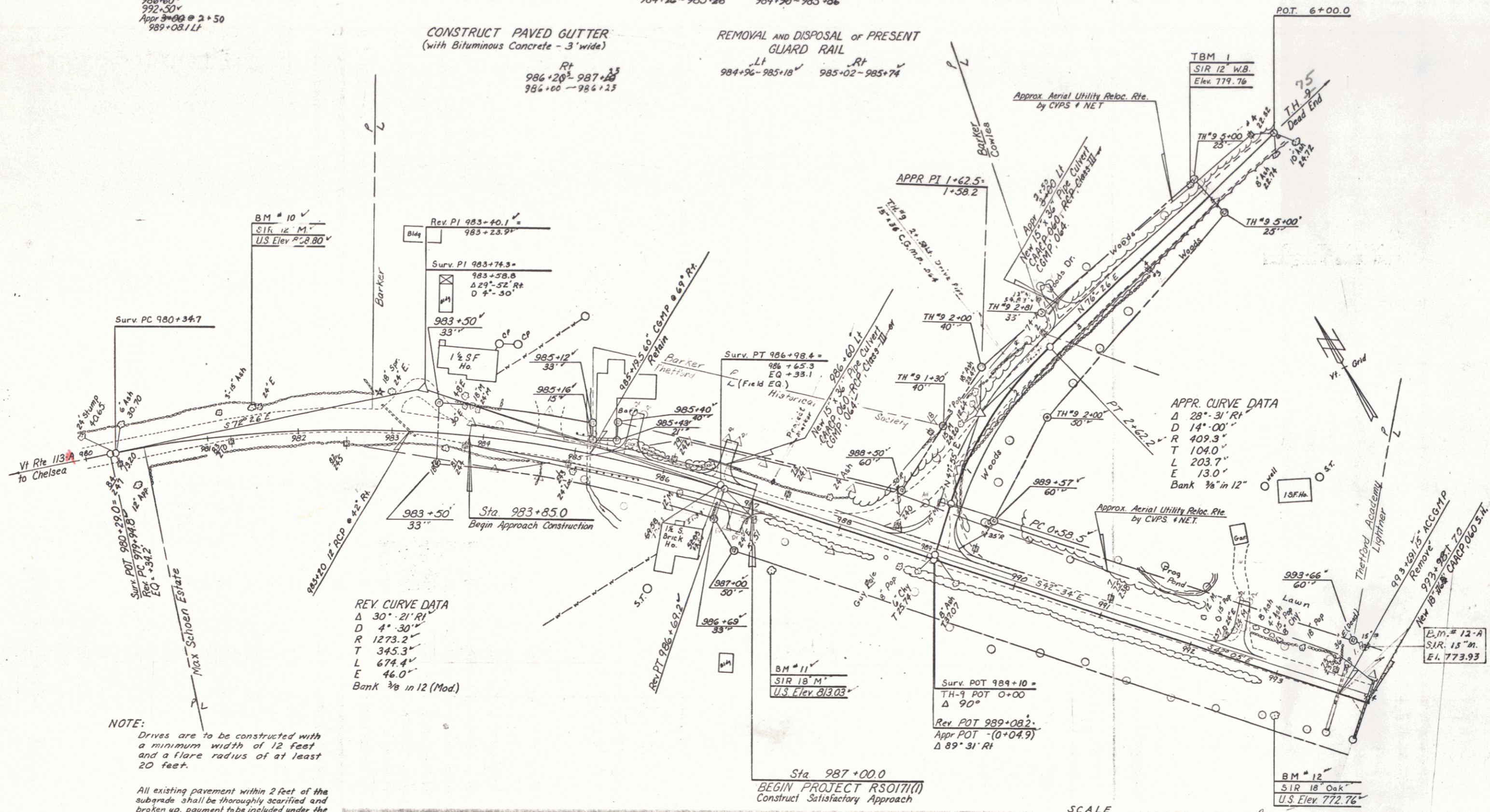
DRILLING AND BLASTING OF SOLID
 ROCK SUBGRADE
 985+50 - 988+25

STANDARD STEEL BEAM GUARD
 RAIL with STEEL POSTS
 Lt Rt
 984+96 - 985+28 984+90 - 985+86

CONSTRUCT APPROACH
 Lt
 989+08.2

CONSTRUCT PAVED GUTTER
 (with Bituminous Concrete - 3' wide)
 Rt
 986+20 - 987+25
 986+00 - 986+25

REMOVAL AND DISPOSAL OF PRESENT
 GUARD RAIL
 Lt Rt
 984+96 - 985+10 985+02 - 985+74



NOTE:
 Drives are to be constructed with a minimum width of 12 feet and a flare radius of at least 20 feet.
 All existing pavement within 2 feet of the subgrade shall be thoroughly scarified and broken up, payment to be included under the bid price of Common Excavation, Item 103-A-I

SCALE
 0 50 100
 FEET
 School Academy
 Thetford Academy

SURVEYED BY: Jillson DATE: 4
 DRAWN BY: Perkins DATE: 6
 TRACED BY: Perkins DATE: 9-3-69
THETFORD
 PROJ. RS NO. 0171(1)
 SHEET 7 OF 36
 D-7

CONSTRUCT DRIVE
 Lt Rt
 985+60 986+90
 986+00
 987+50
 988+00
 989+00

DRILLING AND BLASTING OF SOLID
 ROCK SUBGRADE
 985+50 - 988+25

STANDARD STEEL BEAM GUARD
 RAIL WITH STEEL POSTS
 Lt Rt
 984+90-985+28 984+90-985+86

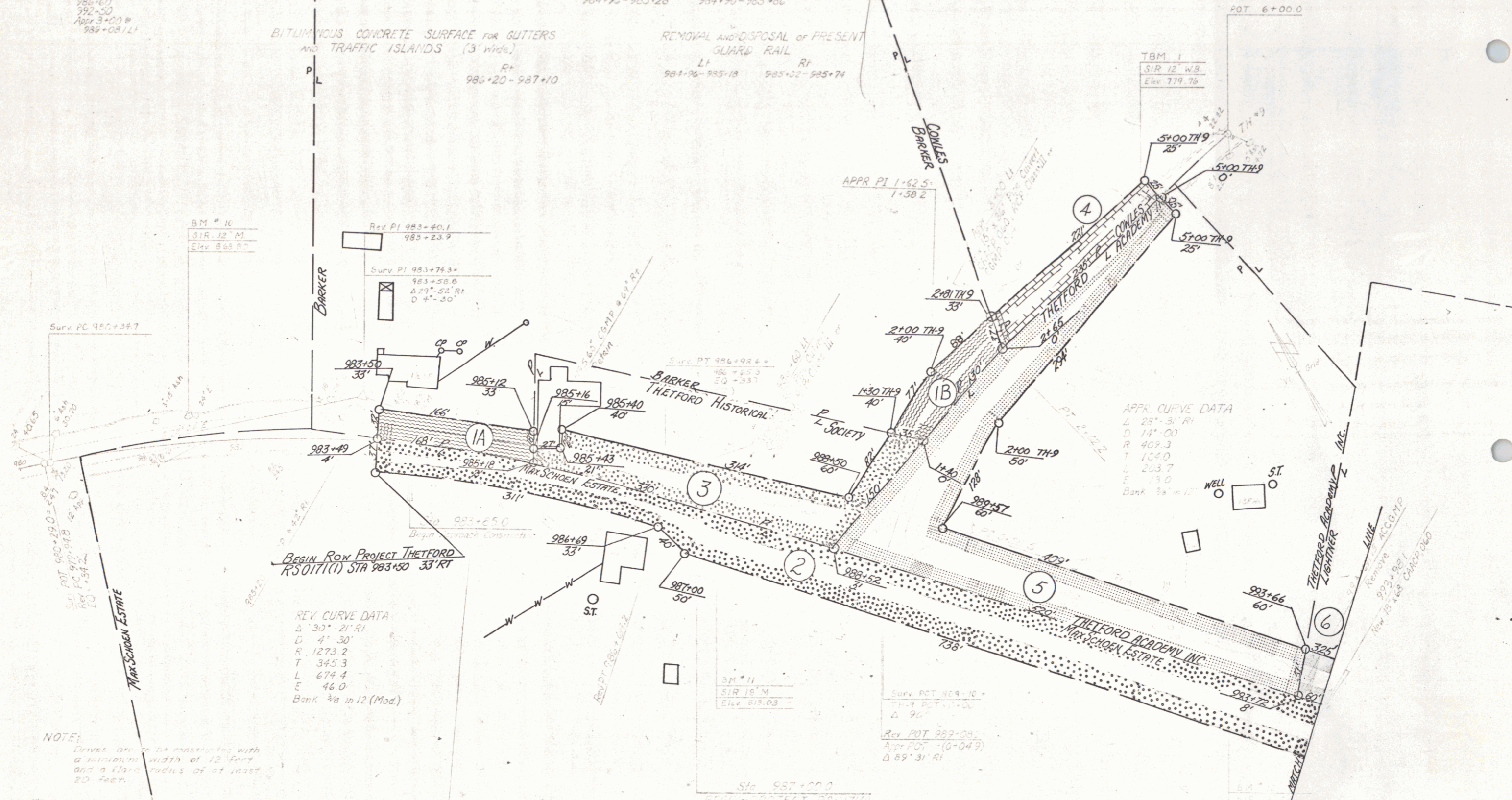
CONSTRUCT APPROACH
 Lt Rt
 989+08.7

BITUMINOUS CONCRETE SURFACE FOR GUTTERS
 AND TRAFFIC ISLANDS (3' wide)
 Lt Rt
 986+20 - 987+10

REMOVAL AND DISPOSAL OF PRESENT
 GUARD RAIL
 Lt Rt
 981+96-985+18 985+02-985+74

POT 6+00.0

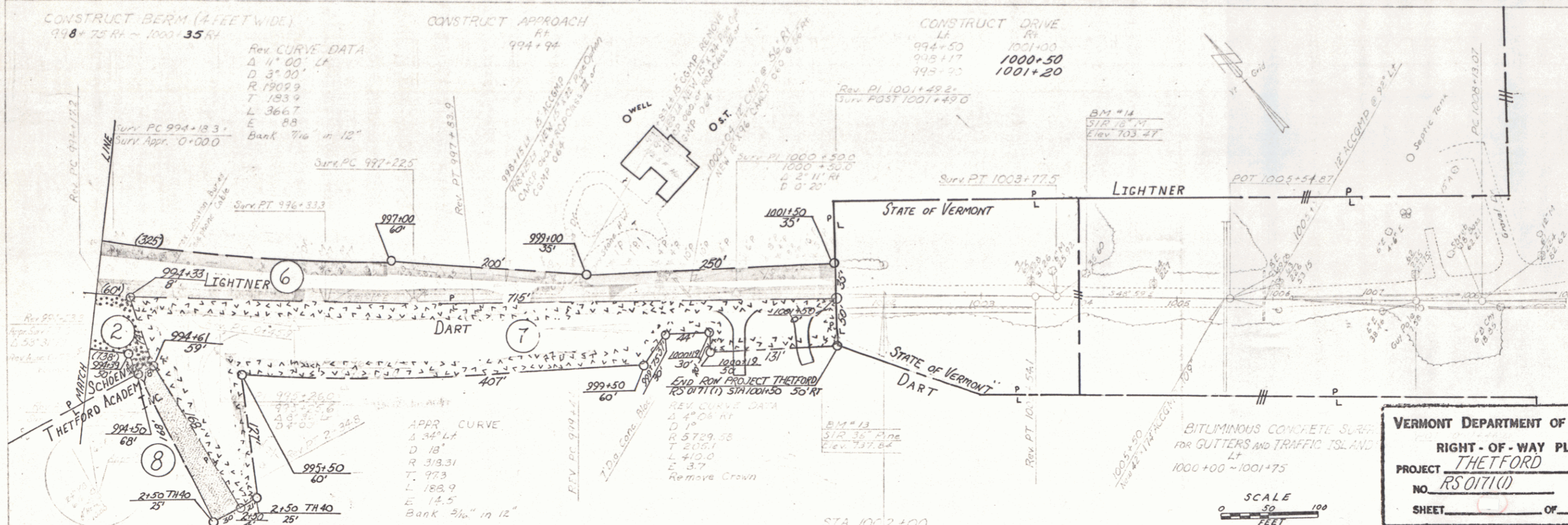
TBM 1
 S/R 12' W.8
 Elev 719.78



NOTE:
 Drives are to be constructed with
 a minimum width of 12 feet
 and a flare radius of at least
 20 feet.

VERMONT DEPARTMENT OF HIGHWAYS
 RIGHT-OF-WAY PLANS
 PROJECT THETFORD
 NO. RS 0171(1)
 SHEET PA OF

POOR ORIGINAL COPY



VERMONT DEPARTMENT OF HIGHWAYS
RIGHT-OF-WAY PLANS
PROJECT THETFORD
NO. RS0171(1)
SHEET 1 OF 1

