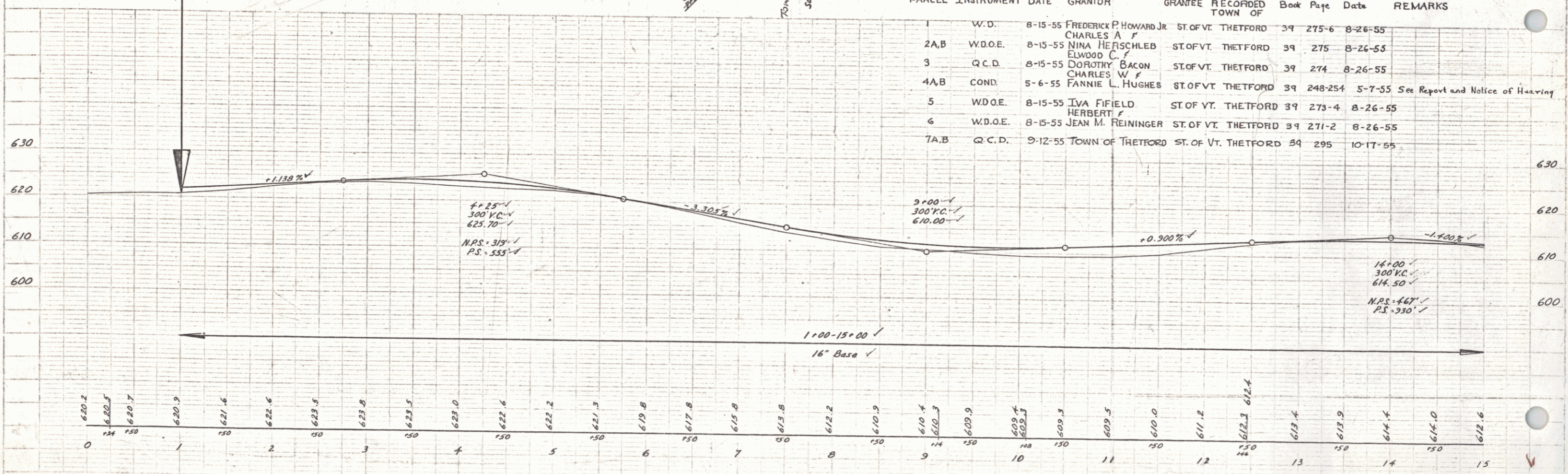


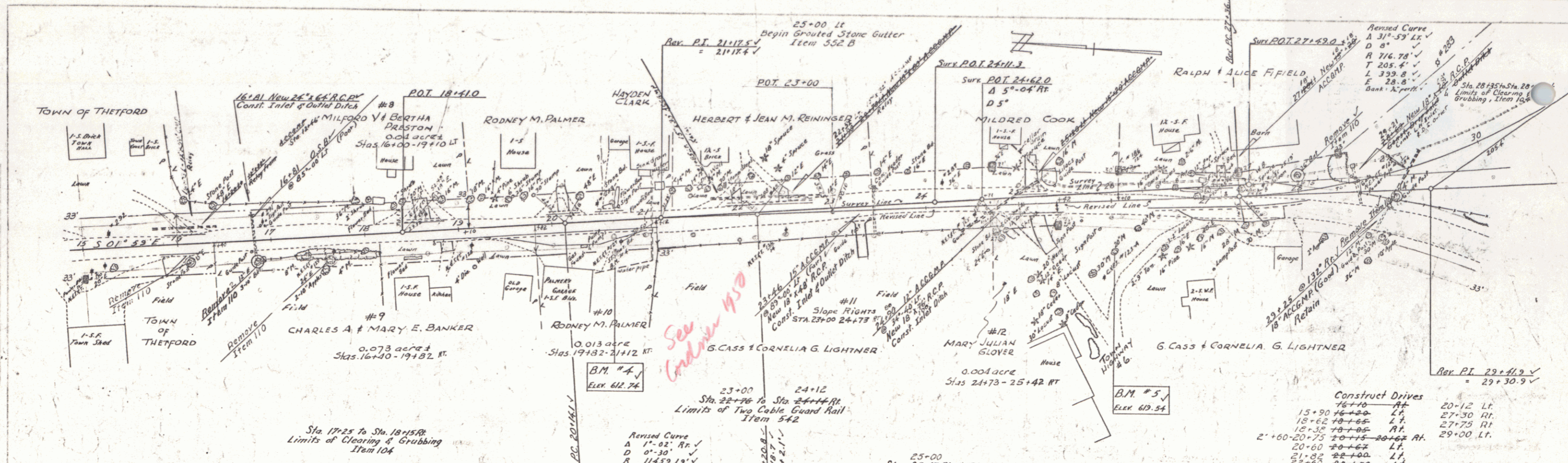
PARCEL	INSTRUMENT	DATE	GRANTOR	GRANTEE	TOWN OF	Book	Page	Date	REMARKS
1	W.D.	8-15-55	FREDERICK P HOWARD JR	ST. OF VT.	THETFORD	39	275-6	8-26-55	
2A,B	W.D.O.E.	8-15-55	CHARLES A & NINA HERSCHLEB	ST. OF VT.	THETFORD	39	275	8-26-55	
3	Q.C.D.	8-15-55	DOROTHY BACON	ST. OF VT.	THETFORD	39	274	8-26-55	
4A,B	COND.	5-6-55	FANNIE L. HUGHES	ST. OF VT.	THETFORD	39	248-254	5-7-55	See Report and Notice of Hearing
5	W.D.O.E.	8-15-55	IVA FIFIELD	ST. OF VT.	THETFORD	39	273-4	8-26-55	
6	W.D.O.E.	8-15-55	JEAN M. REINGER	ST. OF VT.	THETFORD	39	271-2	8-26-55	
7A,B	Q.C.D.	9-12-55	TOWN OF THETFORD	ST. OF VT.	THETFORD	39	295	10-17-55	



B.M. #1 Spike in Power Pole #3, 26' Lt. of Station 2+12, Elev. 623.67  
 B.M. #2 Point on Concrete Header, 12' At Station 12+47.1, Elev. 612.86  
 B.M. #3 Point on First Step of School House (S.E. Corner), 54' Rt. of Station 13+82, Elev. 615.39

4 R

13-1/2



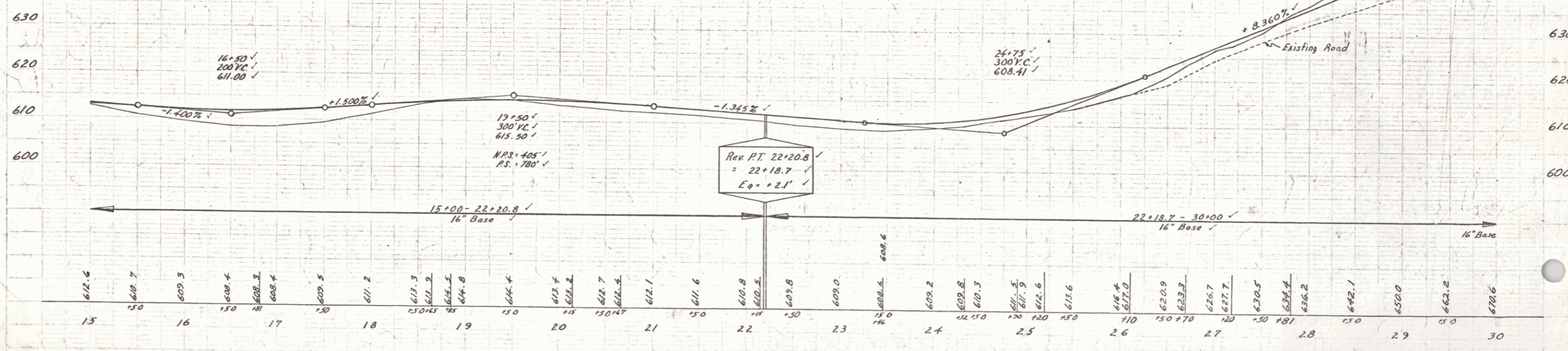
PARCEL	INSTRUMENT	DATE	GRANTOR	GRANTEE	RECORDED TOWN OF	Book	Page	Date	REMARKS
8	W.D.	8-15-55	MILFORD V & BERTHA PRESTON	ST. OF VT. THETFORD	39	272	8-26-55		
9	W.D.	8-20-55	CHARLES A. & MARY E. BANKER	ST. OF VT. THETFORD	39	272-3	8-26-55		
10	W.D.O.E.	8-15-55	RODNEY M. PALMER	ST. OF VT. THETFORD	39	271	8-26-55		
11	W.D.	8-15-55	G. CASS & CORNELIA G. LIGHTNER	ST. OF VT. THETFORD	39	270	8-26-55		
12	W.D.	8-15-55	MARY JULIAN GLOVER	ST. OF VT. THETFORD	39	270	8-26-55		
13	W.D.	8-20-55	RALPH & ALICE FIFIELD	ST. OF VT. THETFORD	39	269-70	8-26-55	See also Sheets 9 & 10	

Revised Curve  
 A 1'-02" Rr ✓  
 D 0'-30" ✓  
 T 11439.13' ✓  
 L 183.4' ✓  
 E 206.7' ✓  
 0.22' ✓  
 Bank - No Banking ✓

25+00  
 Sta. 25+00 R.R. & Sta. 28+56 Rr.  
 Construct Approaches

Construct Drives

15+90	16+10	LT	20+12	LT
18+62	18+65	LT	27+30	Rt.
18+32	18+85	Rt.	27+75	Rt.
2+00	20+75	20+75 - 20+62 Rt.	29+00	LT
21+82	22+00	LT		
22+00	22+50	LT		
25+12	24+32	Rt.		
25+12	25+20	Rt.		
26+90	26+90	Rt.		
27+15	27+20	LT		



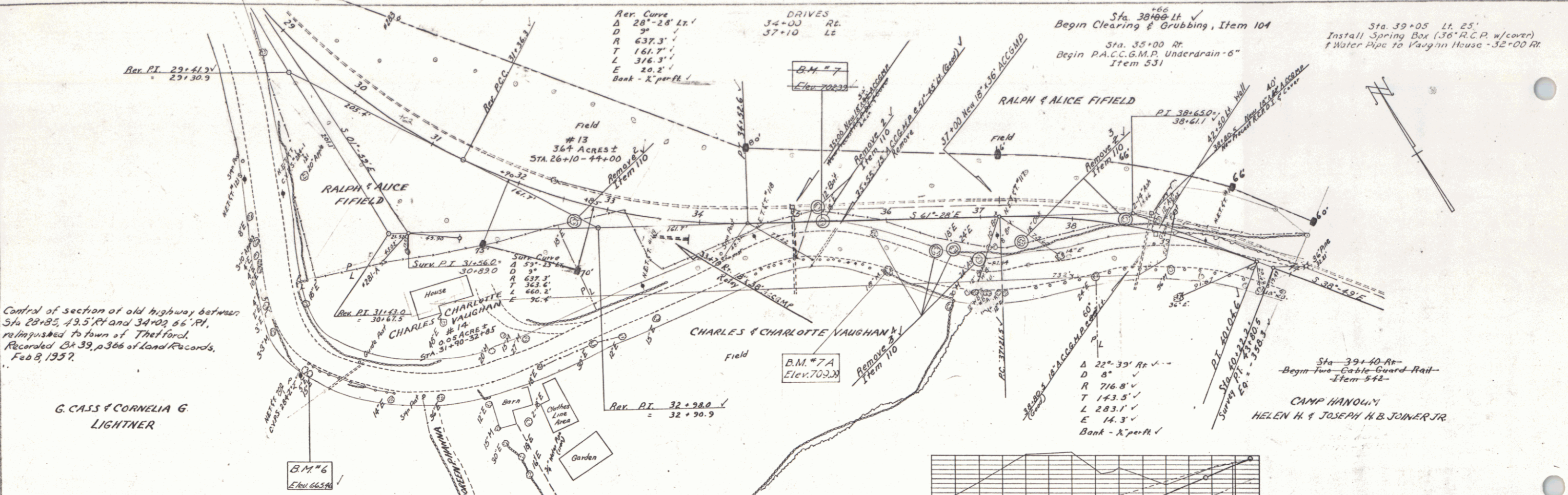
B.M. #4 Pin in Center of State Highway Bound, 31.5' Rr of Station 20+67, Elev. 612.74

B.M. #5 S.I.T. 24" M, 51' Rr of Station 26+01, Elev. 619.54

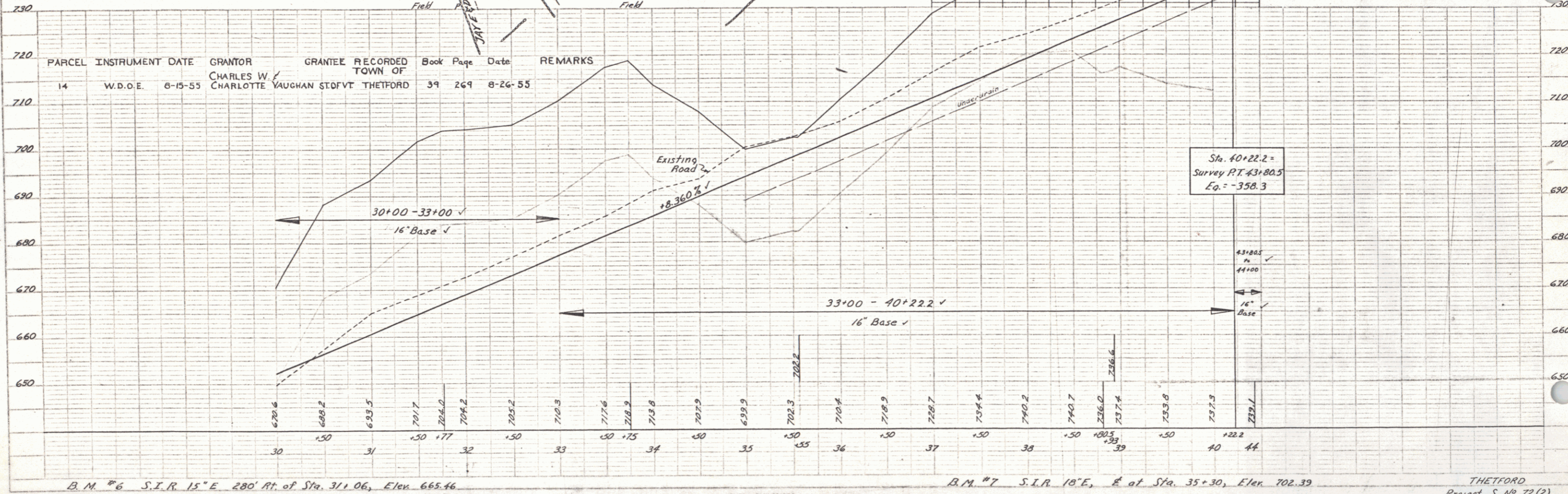
THETFORD  
 Project S No 72(2)  
 Sheet 8 of 53  
 3



PLAN  
 DATE: 1955  
 DRAWN BY: [Name]  
 CHECKED BY: [Name]



Control of section of old highway between Sta 28+85, 43.5' Rt and 34+03 66' Rt, relinquished to town of Thetford, Recorded Ct 39, p.366 of Land Records, Feb 8, 1957.



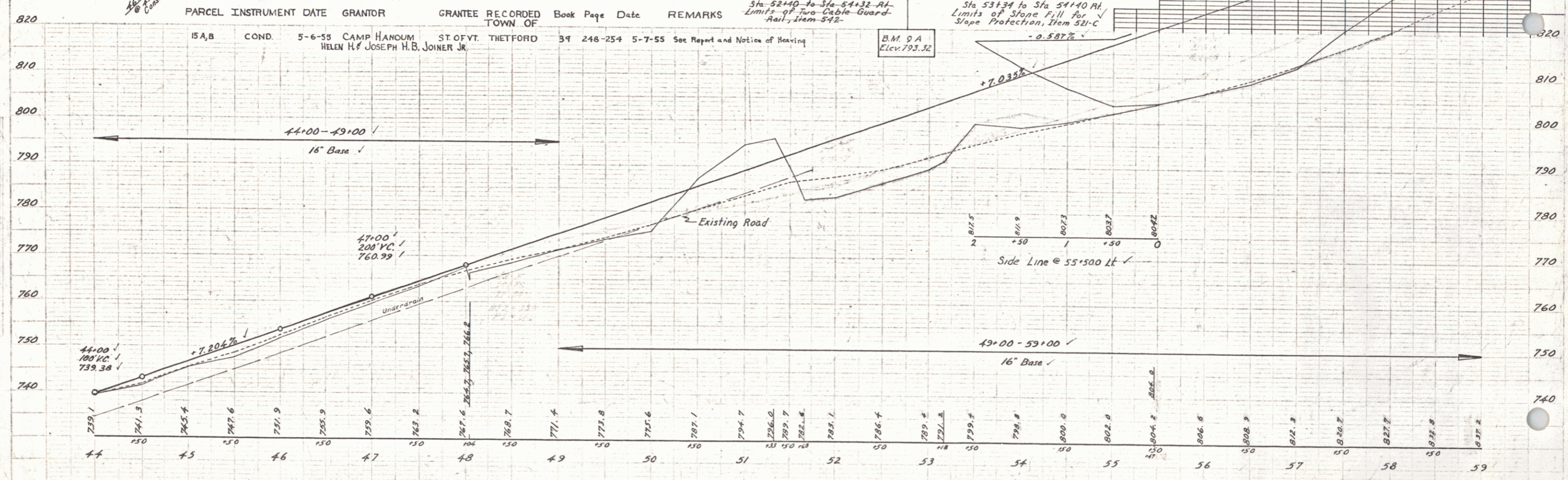
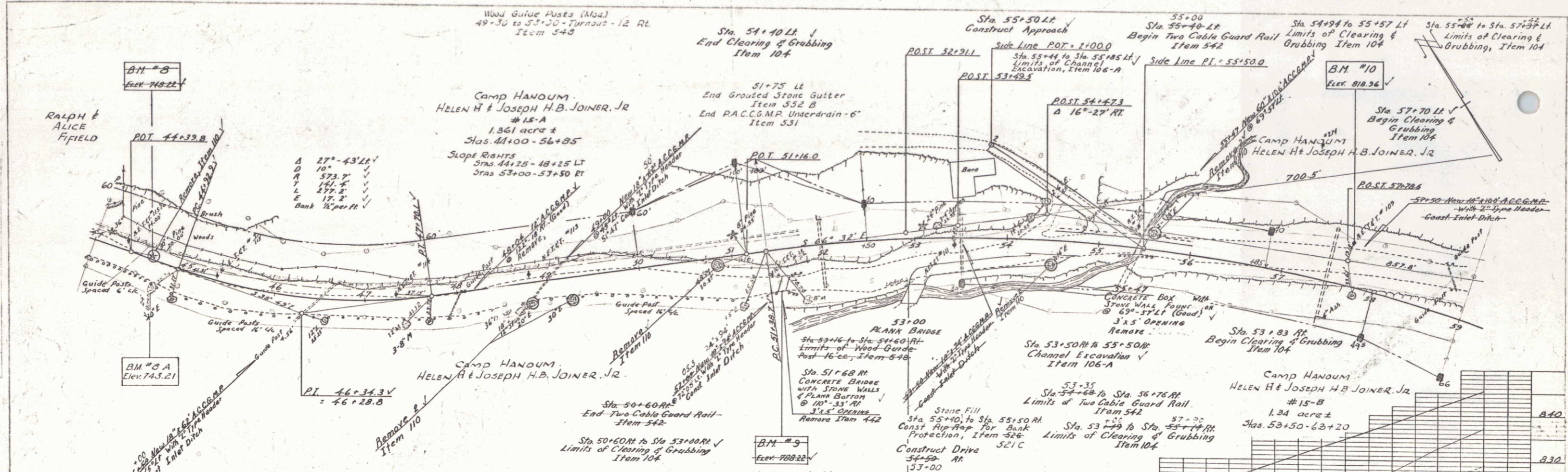
PROFILE  
 DATE: 1955  
 DRAWN BY: [Name]  
 CHECKED BY: [Name]

B.M. #6 S.I.R. 15° E 280' Rt. of Sta. 31+06, Elev. 665.46

B.M. #7 S.I.R. 10° E of Sta. 35+30, Elev. 702.39

THETFORD  
 Project S No 72(2)  
 Sheet 3 of 53

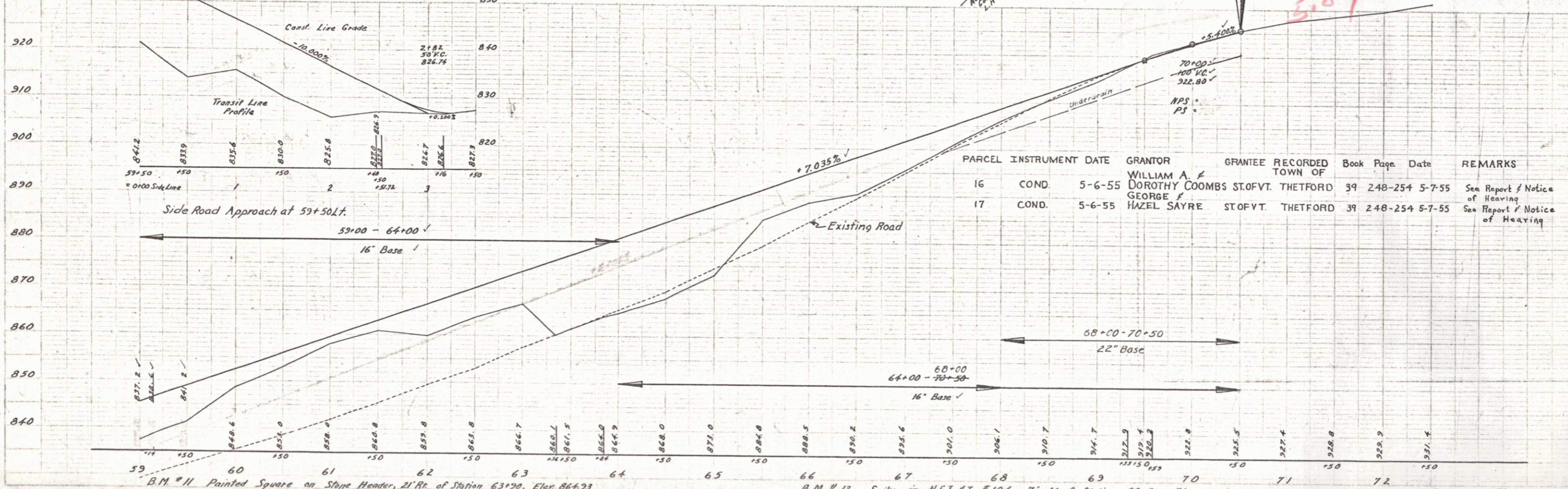
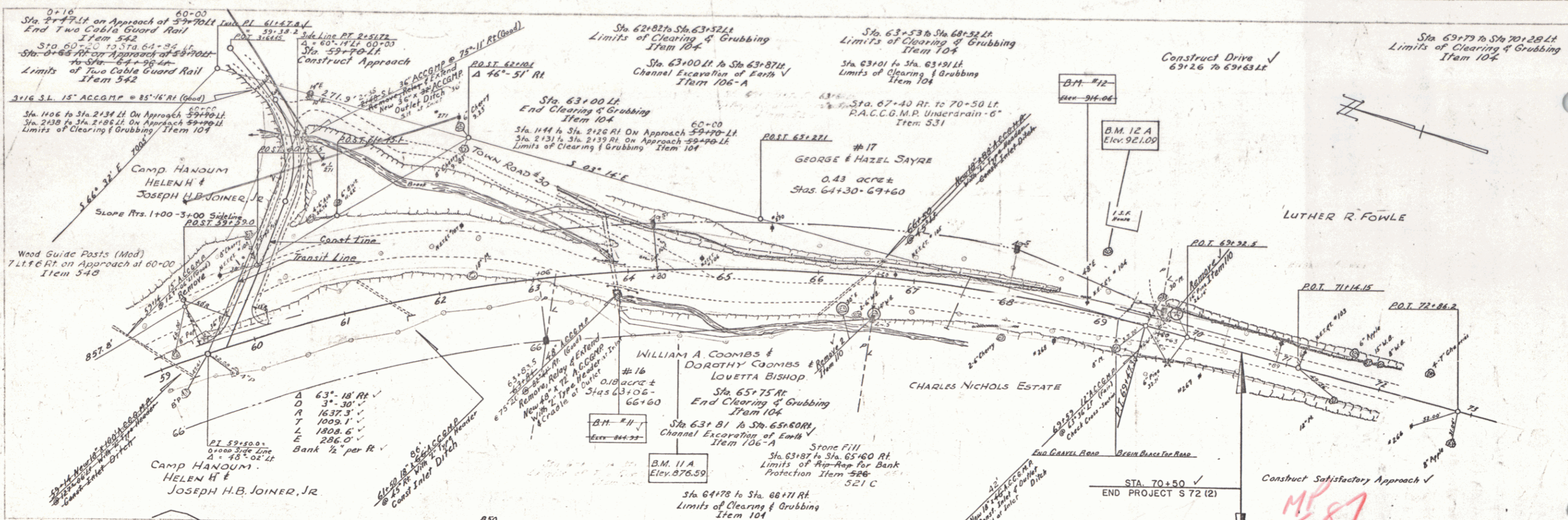
PLATE 1-PLAN PROFILE & CROSS SECTION  
 SCALE: 1" = 40' HORIZ. 1" = 10' VERT.



BM #8 S.I.R. 30" Pipe, 3/4" of Station 44+63, Elev. 748.22

BM #9 Painted Square on Concrete Bridge Railing, 4' Rt. of Station 51+50, Elev. 788.22

BM #10 Spike in N.E.T. #103, 4' Lt. of Station 57+61, Elev. 818.96



PARCEL	INSTRUMENT	DATE	GRANTOR	GRANTEE	RECORDED TOWN OF	Book	Page	Date	REMARKS
16	COND.	5-6-55	WILLIAM A. & DOROTHY COOMBS	STOFVT.	THETFORD	39	248-254	5-7-55	See Report of Notice of Hearing
17	COND.	5-6-55	HAZEL SAYRE	STOFVT.	THETFORD	39	248-254	5-7-55	See Report of Notice of Hearing

B.M. #11 Painted Square on Stone Header, 21' Rt. of Station 63+70, Elev. 864.73

B.M. #12 Spike in N.E.T. of T. #104, 7' Lt. of Station 68+81, Elev. 914.06