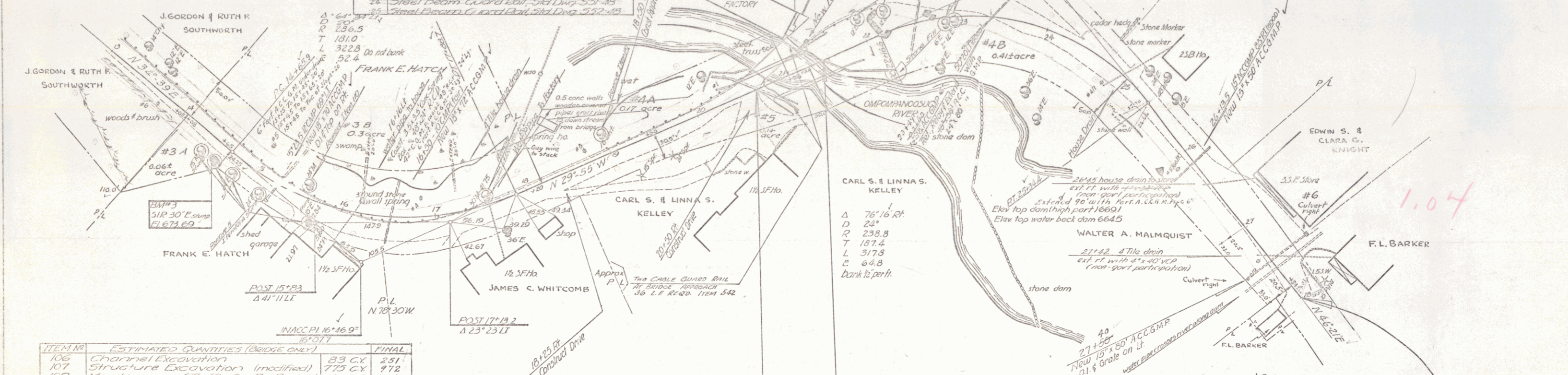


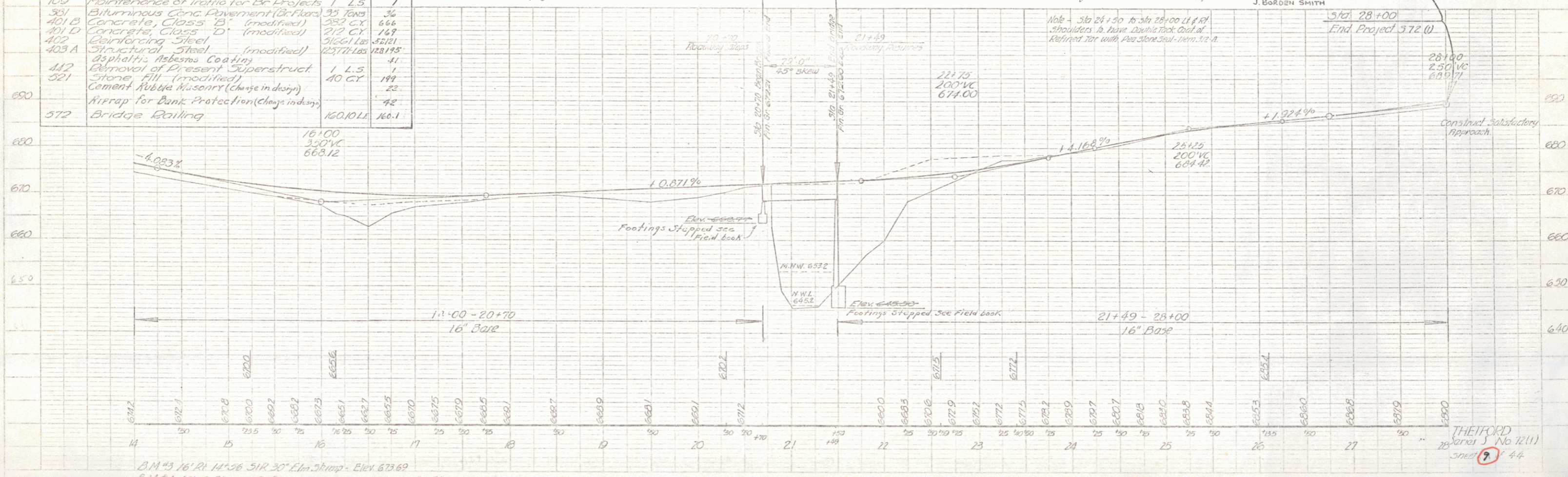
Item	Proposed	Proposed
Overall Span along E. Road	52'-8"	70'-0"
Clear-Span Along E. of Road	50'-0"	70'-0"
Clear-Span Normal to Stream	47'-0"	74'-0"
Clear-High to Low Bridge Seat	23'-0"	2'-0"
Max. High Water Elev.	658.2	651.0
Waterway Area to Low Bridge Seat	1000 sq ft	1500 sq ft
Normal to Stream	100 sq ft	500 sq ft
Stream Velocity	10 1/4	10 1/4
Drift & Scour	None	None

- LIST OF SHEETS (Continued)**
- 10 Preliminary Information Sheet
 - 11 Plan & Profile
 - 12 Abutment No. 1 (Detail)
 - 13 Abutment No. 2 - E. King (Details)
 - 14 Superstructure
 - 15 Sld. Pipe & Spandrel Coll. Sld. Dwg. 58-551
 - 16 Typical Details Sld. Dwg. 58-201 (Det. A, C, D, E, F, H, J, K, & L)
 - 17 Barricades, Signs & Lights Sld. Dwg. 58-11
 - 18 Steel Beam Guard Rail Sld. Dwg. 58-13
 - 19 Steel Beam Guard Rail Sld. Dwg. 58-15

Parcel Instrument Date	Grantor	Grantee	Book	Page	Remarks
#3 AND W.D.O.E. 11-1-30	FRANK E. HATCH	ST. OF VT.	37	618-19	12-22-30
#4 AND W.D.O.E. 11-14-30	WALTER A. MALMQUIST	ST. OF VT.	39	4-5-6	1-17-31
#5 W.D.O.E. 10-25-30	CARL S. & LINNA S. KELLEY	ST. OF VT.	37	610-11	12-22-30
#6 W.D.O.E. 10-25-30	EDWIN S. & CLARA G. KNIGHT	ST. OF VT.	37	617-18	12-22-30



ITEM NO.	ESTIMATED QUANTITIES (BRIDGE ONLY)	FINAL
106	Channel Excavation	83 CY 251
107	Structure Excavation (modified)	775 CY 772
108	Maintenance of Traffic for Br. Projects	1 LS 7
381	Biluminous Conc. Pavement (Dr. Floor)	93 TONS 36
401 B	Concrete, Class "B" (modified)	257 CY 646
401 D	Concrete, Class "D" (modified)	212 CY 147
402	Reinforcing Steel	51661 LBS 5211
403 A	Structural Steel (modified)	12371 LBS 128195
412	Asphaltic Rubbery Coating	1 LS 41
413	Removal of Present Superstruct.	1 LS 1
521	Stone Fill (modified)	40 CY 144
	Cement Rubble Masonry (change in design)	23
	Apron for Bank Protection (change in design)	42
572	Bridge Railing	160.10 LS 160.1



PLAN
 DATE
 DRAWN BY
 CHECKED BY
 APPROVED BY

PROFILE
 DATE
 DRAWN BY
 CHECKED BY
 APPROVED BY

B.M. #3 16' RI. 14+56 51R. 30' Elm. Strip - Elev. 673.69
 B.M. #4 45' LI. 5th 21+37 Spot on Conc. Loading Platform - Elev. 673.11

THEYFORD
 No. 12(11)
 Sheet 44