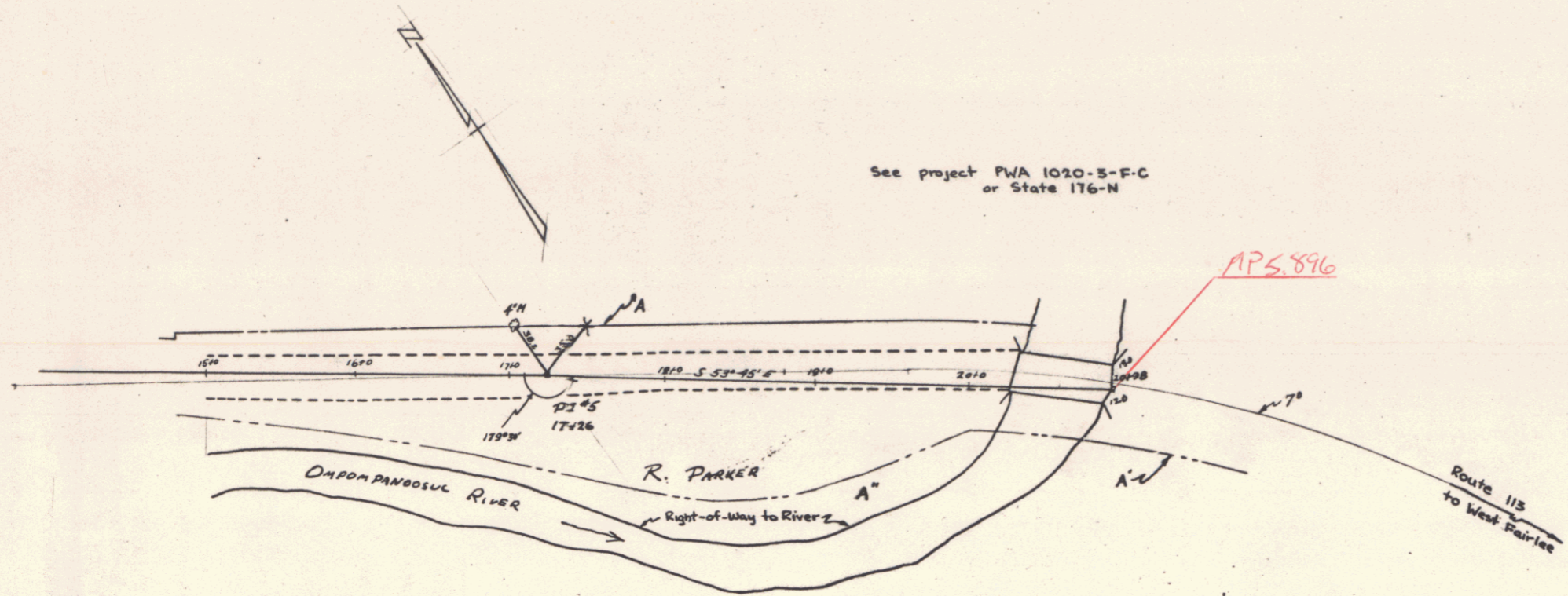


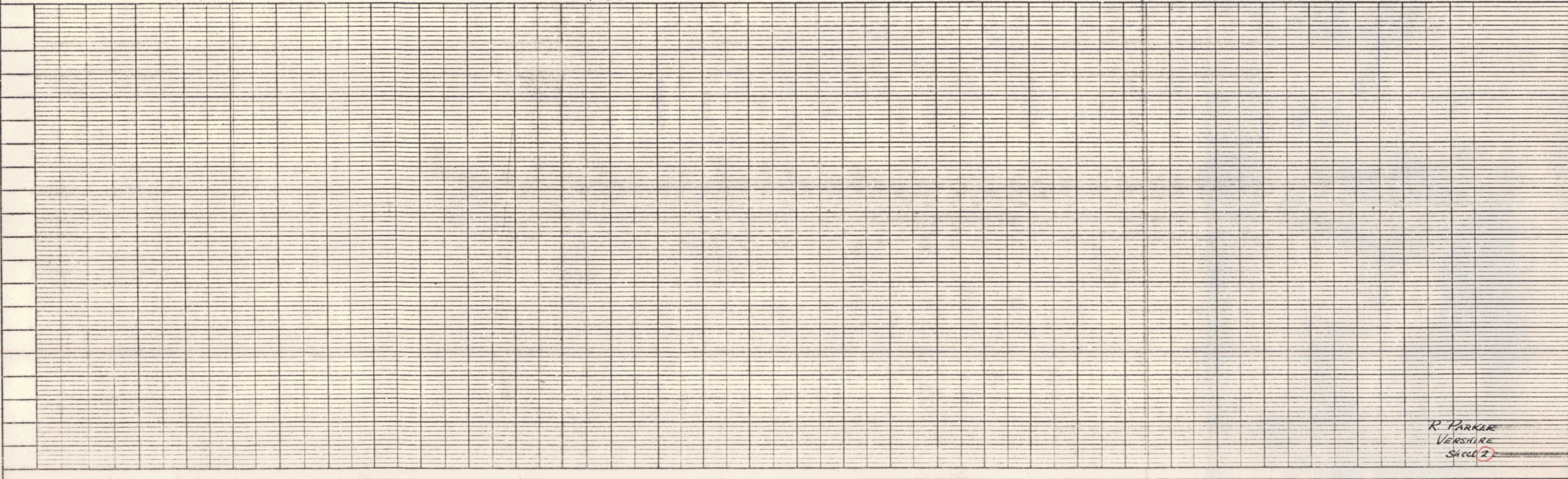
PLAN  
 DRAWN BY: K. GARDNER  
 CHECKED BY: T. J. TULLOCH  
 DATE: 1/25/53

PROFILE  
 DRAWN BY: K. GARDNER  
 CHECKED BY: T. J. TULLOCH  
 DATE: 1/25/53

See project PWA 1020-3-F-C or State 176-N



| PARCEL | INSTR | DATE     | GRANTOR                    | GRANTEE    | BK | PAGE | RECORDED-VERSHIRE DATE | REMARKS                               |
|--------|-------|----------|----------------------------|------------|----|------|------------------------|---------------------------------------|
| A      | QCD   | 1/13/39  | CHAS. N. & ANNA WINCHESTER | ST. OF VT. | 22 | 403  | 1/19/39                | See PWA 1020-3-F-C or ST 176-N (1939) |
| A'     | QCD   | 12/30/38 | HENRY S. CHAMBERLAIN       | ST. OF VT. | 22 | 400  | 1/4/39                 | -                                     |
| A''    | WDOE  | 2/24/33  | RAYMOND M. & RUBY PARKER   | ST. OF VT. | 24 | 228  | 2/20/33                | -                                     |



R. PARKER  
VERSHIRE  
SHEET 2