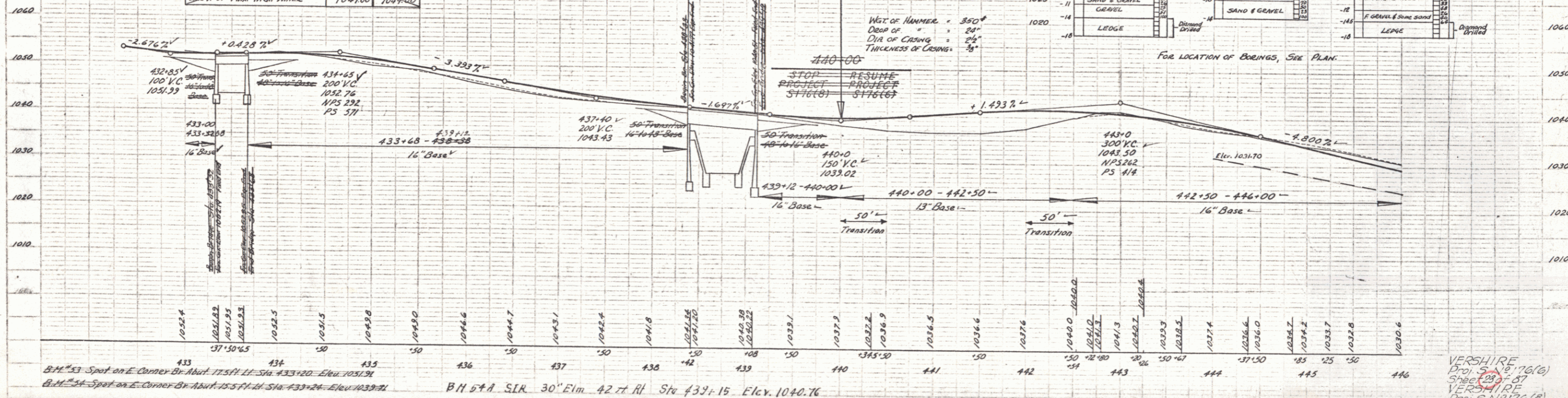
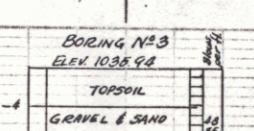
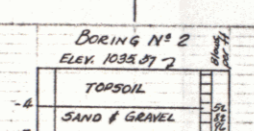
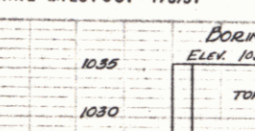
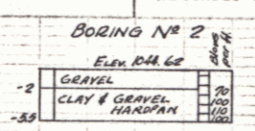
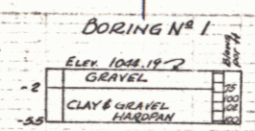


TYPE	PRESENT	PROPOSED
OVERALL SPAN	78'	78'
CLEAR SPAN L TO STREAM	15'	15'
CLEAR HEIGHT	7'	7'
ROADWAY WIDTH	20'	28'
WATERWAY	26.6'	26.6'
ELEV. OF MAX. HIGH WATER	1036.00	1036.00

BRIDGE DATA (Gr. N°14)	PRESENT	PROPOSED
TYPE	Cong. I Beam	Cong. I Beam
OVERALL LENGTH	55'	53'
CLEAR SPAN L TO STREAM	19.5'	19.5'
CLEAR HEIGHT	6'	6'
ROADWAY WIDTH	17'	17'
WATERWAY	17'	17'
ELEV. OF MAX. HIGH WATER	1049.00	1049.00



PLAN  
DATE 10/1/56  
SCALE 1" = 40'

Profile  
DATE 10/1/56  
SCALE 1" = 40'

VERSHIRE  
Proj. S. 16.76(c)  
Sheets 28, 29, 30, 31  
1/25/54/10/56  
Proj. S. N. 9176(B)  
Sheet 28 of 60  
8 60