

- SHEET NO. 1 TITLE PAGE  
 2 TYPICAL CROSS-SECTION OF IMPROVEMENT (DOUBLE TACK COAT OF REFINED TAR WITH PEASTONE SEAL)  
 3 ROADWAY STANDARD SHEET RS 56-1 (BANKING)  
 4 ROADWAY STANDARD SHEET RS 56-12 (BARRICADES, SIGNS AND LIGHTS) ROADWAY  
 5 QUANTITY SHEET (ITEMS)  
 6 QUANTITY SHEET (DRAINAGE)  
 7-11 EARTHWORK SHEETS  
 12-27 PLAN AND PROFILE SHEETS  
 28 ROADWAY STANDARD SHEET RS 56-3 (MARKERS)  
 29 ROADWAY STANDARD SHEET RS 56-4 (DRAINAGE)  
 30 ROADWAY STANDARD SHEET RS 56-6 (TYPICAL GRADINGS AND TURNOUTS)  
 31 ROADWAY STANDARD SHEET RS 56-11 (THREE CABLE GUARD RAIL)  
 31-A ROADWAY STANDARD SHEET RS 56-14 (PC, RCP DROP INLETS)  
 32-37 CROSS-SECTION SHEETS

| PROJECT NAME & NUMBER                      | TYPE                                 | PAVT AREA      |
|--|--------------------------------------|----------------|
| VERSHIRE-S176(6)                           | DOUBLE TK. CT.                       | 47969 sq. yds. |
| RECORD PLANS                               |                                      |                |
| MATERIALS                                  |                                      |                |
| PEASTONE ~ WELLS LAMSON, BARRE, VT.        | METAL PIPE ~ N.E. METAL PIPE CO.     |                |
| TAR ~ KOPPERS PRODUCTS CO, EVERETT, MASS.  | STEEL GUIDE POSTS ~ BETHLEHEM STEEL  |                |
| R.C.P. ~ VT. CONCRETE PIPE CO-WINDSOR, VT. | GUARD RAIL ~ BETHLEHEM STEEL         |                |
|  | GRAVEL ~ WOOD PIT - POMFANOOCUC, VT. |                |
| CONTRACTOR ~ OLSON CONST. CO.              | CONTRACT DATED ~ JAN. 11, 1957       |                |
| RESIDENT ENGINEER ~ JOHN R. HUGHES         | CONTRACT STARTED ~ MARCH 25, 1957    |                |
| INSPECTOR ~ EARL J. CRUICKSHANK            | CONTRACT COMPLETED ~ JULY 24, 1958   |                |
| RECORD PLANS ~ JOHN R. HUGHES              | CONTRACT ACCEPTED ~ JULY 24, 1958    |                |

# TOWN OF VERSHIRE

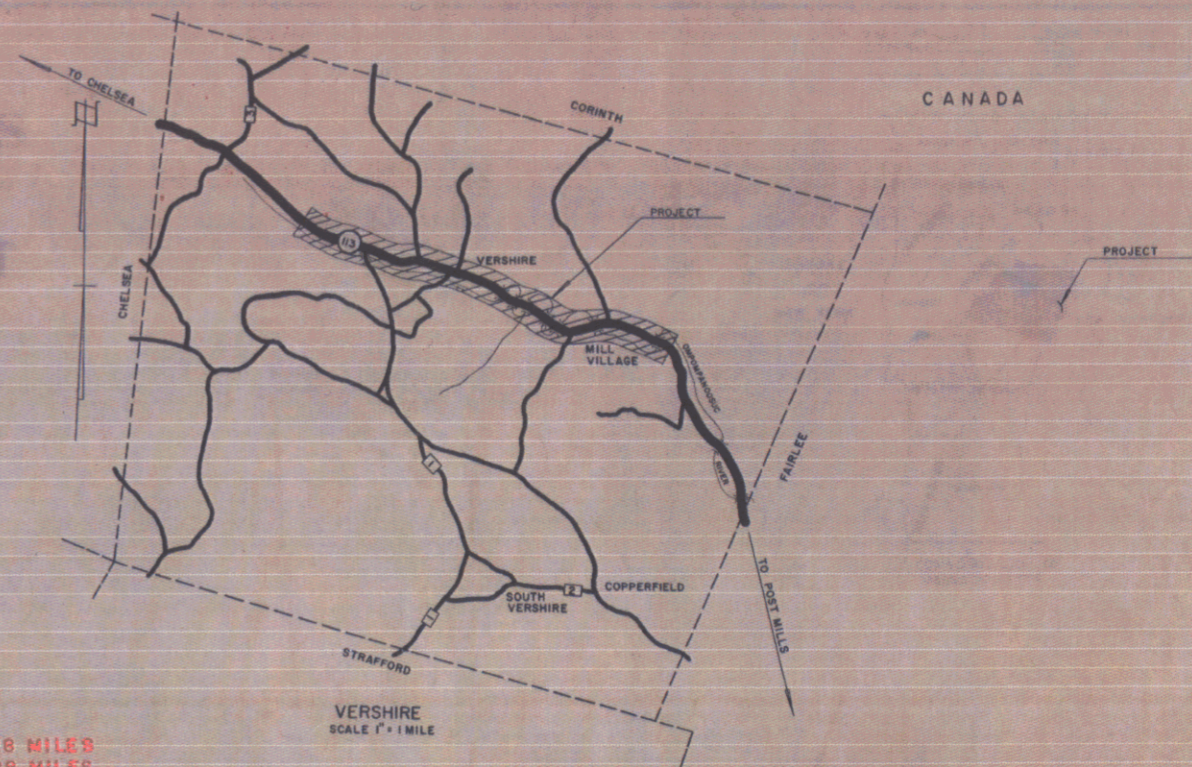
## COUNTY OF ORANGE

### CHELSEA-WEST FAIRLEE ROAD

### VERMONT ROUTE 113

BEGINNING AT A POINT APPROXIMATELY 9667.1 FEET EASTERLY OF THE CHELSEA  
 VERSHIRE TOWN LINE AND EXTENDING EASTERLY 21,266.3 FEET EXCLUDING BRIDGES  
 AND APPROACHES

LENGTH OF ROADWAY 19,176.4 FEET = 3.6319 MILES 20765.2 FEET = 3.9328 MILES  
 LENGTH OF PROJECT 19,176.4 FEET = 3.6319 MILES 20765.2 FEET = 3.9328 MILES



MP 1.83

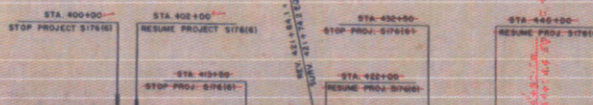
STA 286+35  
 BEGIN PROJECT S176(6)

MP 5.86

STA 497+50  
 END PROJECT S176(6)

STA 452+00  
 BEGIN PROJ. S176(6)

STA 458+30  
 STOP PROJ. S176(6)



*Project - S176(6)*  
*Stationing - 113*  
*From town Vershire*  
*to town West Fairlee*  
 Pin - 00R449

PROJECT VERSHIRE  
 SHEET S-176(6)  
 LENGTH 3,932.8 MI.  
 TYPE DOUBLE TACK COAT OF REFINED TAR WITH PEASTONE SEAL  
 SUB-BASE OF CRUSHED GRAVEL, FINE GRADED  
 CONSTRUCTION OLSON CONST. CO.  
 YEAR 1958  
 LOCATION CHELSEA-WEST FAIRLEE ROAD, VERMONT ROUTE 113  
 BEGINNING AT A POINT APPROXIMATELY 9667.1 FEET EASTERLY OF THE  
 CHELSEA-VERSHIRE TOWN LINE AND EXTENDING EASTERLY 21,266.3 FEET  
 EXCLUDING BRIDGES AND APPROACHES

VERSHIRE S176(6)  
 CONTRACTOR - OLSON CONST. CO.  
 RECORD PLANS - J.R. HUGHES  
 CONTRACT COMPLETED - JULY 24, 1958

1000'  
 500'  
 250'  
 100'  
 50'

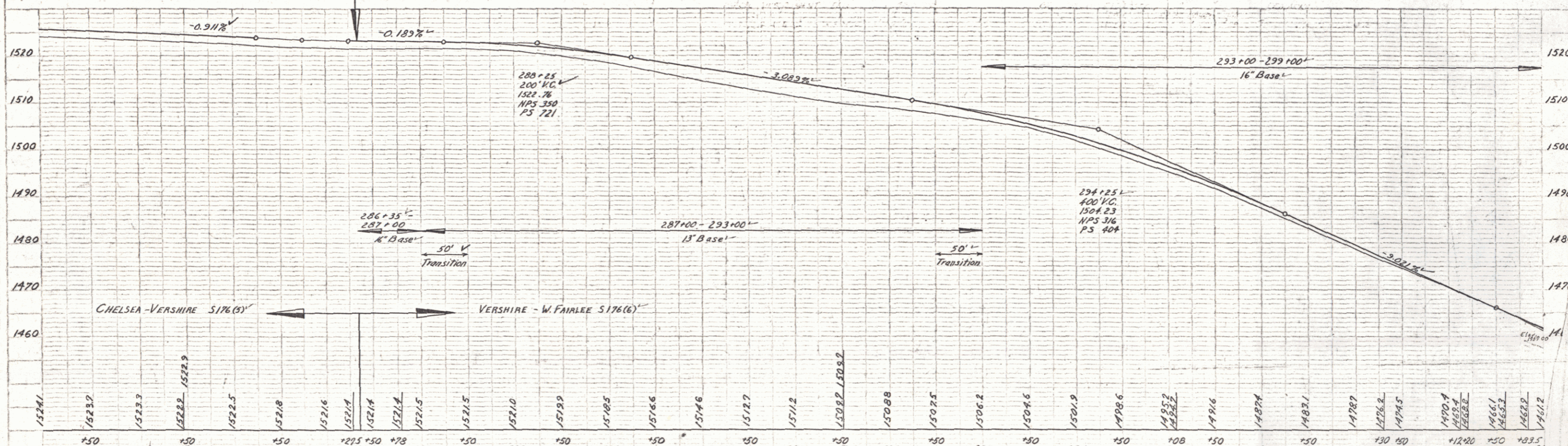
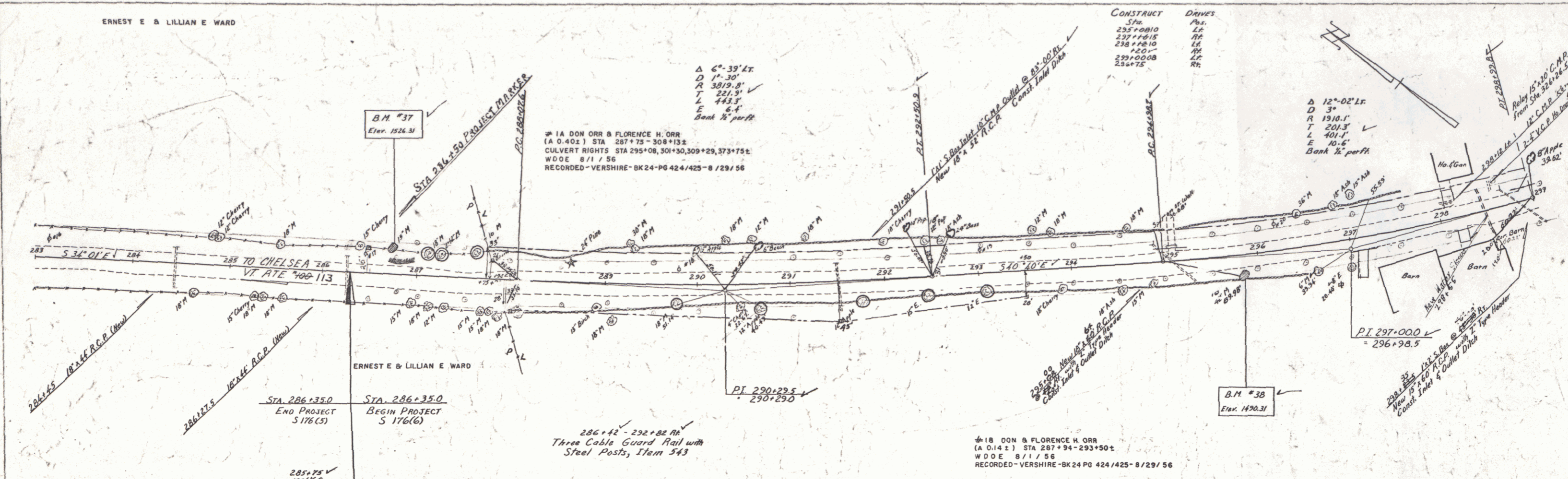
CONSTRUCTION OF JANUARY 1956, AS APPROVED BY THE BUREAU OF PUBLIC ROADS JULY 5, 1956, INCLUDING ALL SUBSEQUENT APPROVED REVISIONS AND SUCH REVISED SPECIFICATIONS AND SPECIAL PROVISIONS AS ARE SUBMITTED WITH THE PLANS.

W.C. United 11-24-56  
 J.R. Hughes 11-20-56  
 R.A. Arnold 11-20-56  
 D.C. Merritt NOV. 20, 1956  
 H.L. August NOV. 19, 1956

ERNEST E & LILLIAN E WARD

|         |                                |
|---------|--------------------------------|
| Scale   | 1" = 40'                       |
| Project | VERSHIRE - W. FAIRLEE S 176(6) |
| Sheet   | 12                             |
| Date    | 10/1/56                        |

|         |                                |
|---------|--------------------------------|
| Scale   | 1" = 40'                       |
| Project | VERSHIRE - W. FAIRLEE S 176(6) |
| Sheet   | 12                             |
| Date    | 10/1/56                        |

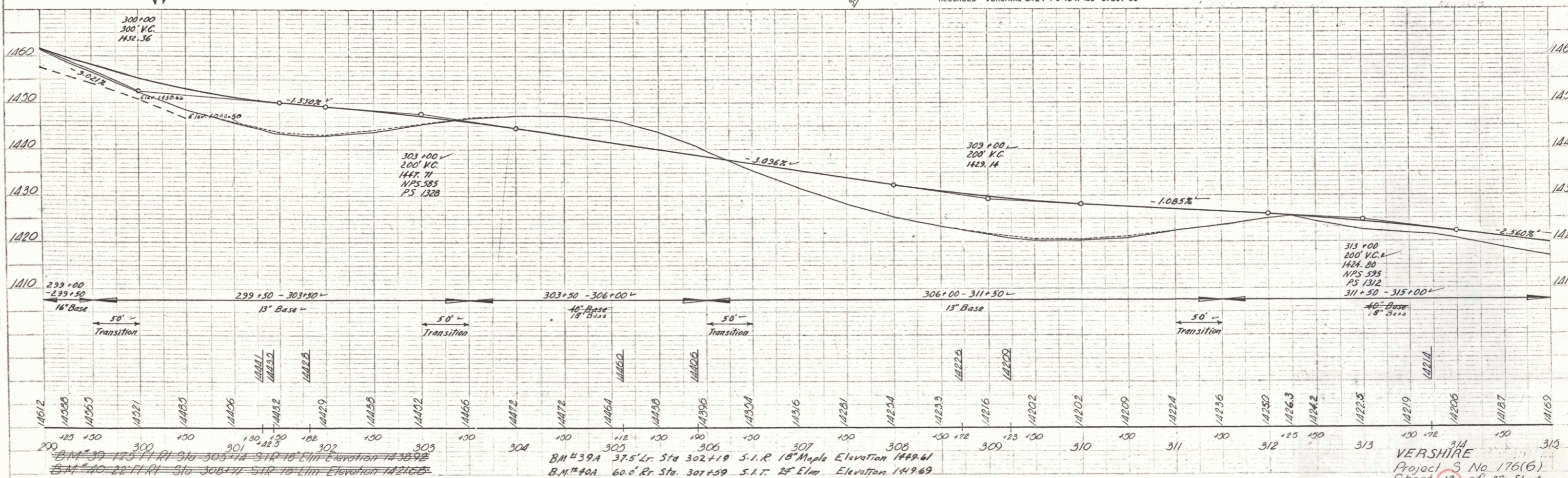
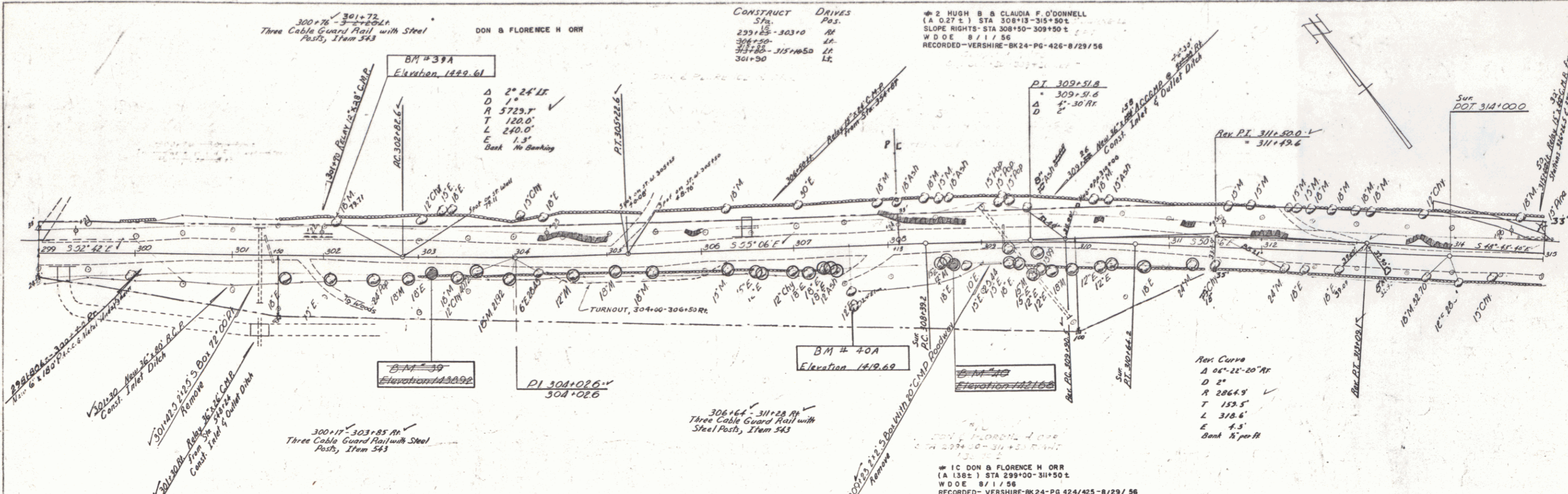


|        |        |        |        |        |        |        |        |        |        |        |        |        |        |        |        |        |        |        |        |        |        |        |        |        |        |        |        |        |        |        |        |        |        |        |        |        |        |        |        |        |        |        |        |        |        |        |        |        |        |        |        |        |        |        |        |        |        |        |        |        |        |        |        |        |        |        |        |        |        |        |        |     |     |     |     |     |     |
|--------|--------|--------|--------|--------|--------|--------|--------|--------|--------|--------|--------|--------|--------|--------|--------|--------|--------|--------|--------|--------|--------|--------|--------|--------|--------|--------|--------|--------|--------|--------|--------|--------|--------|--------|--------|--------|--------|--------|--------|--------|--------|--------|--------|--------|--------|--------|--------|--------|--------|--------|--------|--------|--------|--------|--------|--------|--------|--------|--------|--------|--------|--------|--------|--------|--------|--------|--------|--------|--------|--------|--------|-----|-----|-----|-----|-----|-----|
| 1524.1 | 1523.7 | 1523.3 | 1522.9 | 1522.5 | 1521.8 | 1521.6 | 1521.4 | 1521.2 | 1521.0 | 1519.9 | 1519.5 | 1518.6 | 1517.6 | 1517.2 | 1516.2 | 1515.2 | 1514.2 | 1513.2 | 1512.2 | 1511.2 | 1510.2 | 1509.2 | 1508.2 | 1507.2 | 1506.2 | 1505.2 | 1504.2 | 1503.2 | 1502.2 | 1501.2 | 1500.2 | 1499.2 | 1498.2 | 1497.2 | 1496.2 | 1495.2 | 1494.2 | 1493.2 | 1492.2 | 1491.2 | 1490.2 | 1489.2 | 1488.2 | 1487.2 | 1486.2 | 1485.2 | 1484.2 | 1483.2 | 1482.2 | 1481.2 | 1480.2 | 1479.2 | 1478.2 | 1477.2 | 1476.2 | 1475.2 | 1474.2 | 1473.2 | 1472.2 | 1471.2 | 1470.2 | 1469.2 | 1468.2 | 1467.2 | 1466.2 | 1465.2 | 1464.2 | 1463.2 | 1462.2 | 1461.2 | 1460.2 |     |     |     |     |     |     |
| 283    | 284    | 285    | 286    | 287    | 288    | 289    | 290    | 291    | 292    | 293    | 294    | 295    | 296    | 297    | 298    | 299    | 300    | 301    | 302    | 303    | 304    | 305    | 306    | 307    | 308    | 309    | 310    | 311    | 312    | 313    | 314    | 315    | 316    | 317    | 318    | 319    | 320    | 321    | 322    | 323    | 324    | 325    | 326    | 327    | 328    | 329    | 330    | 331    | 332    | 333    | 334    | 335    | 336    | 337    | 338    | 339    | 340    | 341    | 342    | 343    | 344    | 345    | 346    | 347    | 348    | 349    | 350    | 351    | 352    | 353    | 354    | 355 | 356 | 357 | 358 | 359 | 360 |

VERSHIRE  
Project S No. 176(6)  
Sheet 12 of 27 Sheets

SPRINGER  
11-31-56  
2-36  
Palmer

SPRINGER  
11-31-56  
2-36  
Palmer



BM #39 175' Elev. Sta. 303+74 S.I.R. 10' Elm. Elevation 1438.92  
 BM #40 22' Elev. Sta. 306+11 S.I.R. 10' Elm. Elevation 1421.65  
 BM #39A 37.5' Elev. Sta. 302+19 S.I.R. 18' Maple Elevation 1449.61  
 BM #40A 60.0' Elev. Sta. 301+59 S.I.R. 28' Elm. Elevation 149.69

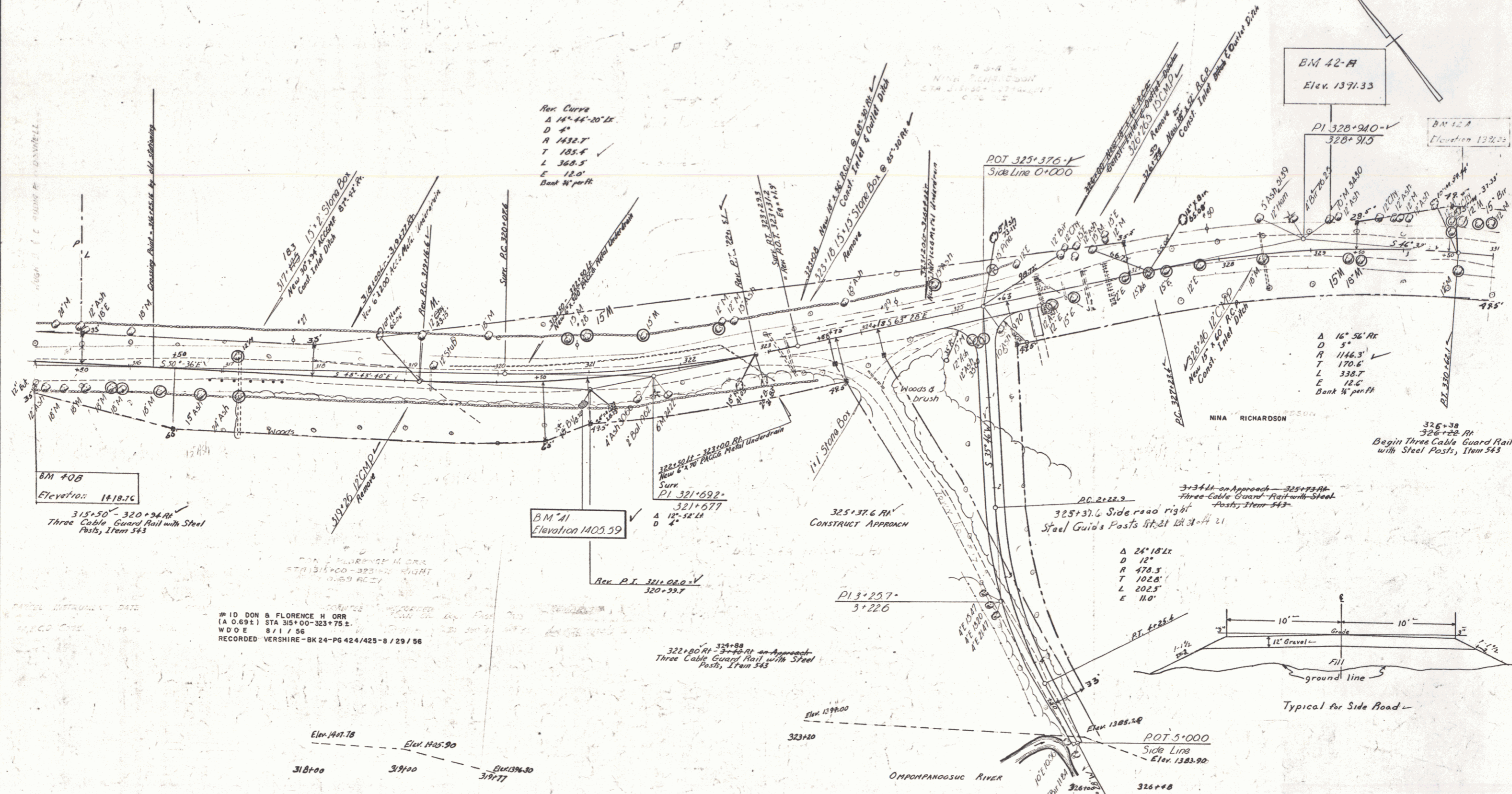
VERSHERE  
Project 5 No. 176(6)  
Sheet 13 of 87 Sheets

HUGH B & CLAUDIA F O'DONNELL

±± 3A NINA RICHARDSON  
(A 0.76 ±) STA 315+50-327+00  
CULVERT RIGHTS- STA 326+00, 326+75, 326+00  
COND 8 / 29 / 56  
RECORDED - VERSHIRE - BK24-PG 390/411-6 / 1 / 56

CONSTRUCT DRIVE  
Sta. Pos.  
325+80.62 101  
323+52. 102

Rec Curve  
Δ 14° 44' 20" E  
D 4'  
A 1432.7  
T 185.4  
L 368.5  
E 12.2  
Bank W per FH



BM 40B  
Elevation: 1818.20  
315+50 - 320+24 RA  
Three Cable Guard Rail with Steel Posts, Item 543

BM 41  
Elevation 1405.59

BM 42-A  
Elev. 1371.33

BM 42-A  
Elevation 1372.22

#10 DON & FLORENCE H ORR  
(A 0.69 ±) STA 315+00-323+75 ±  
W D O E 8 / 1 / 56  
RECORDED - VERSHIRE - BK 24 - PG 424/425 - 8 / 29 / 56

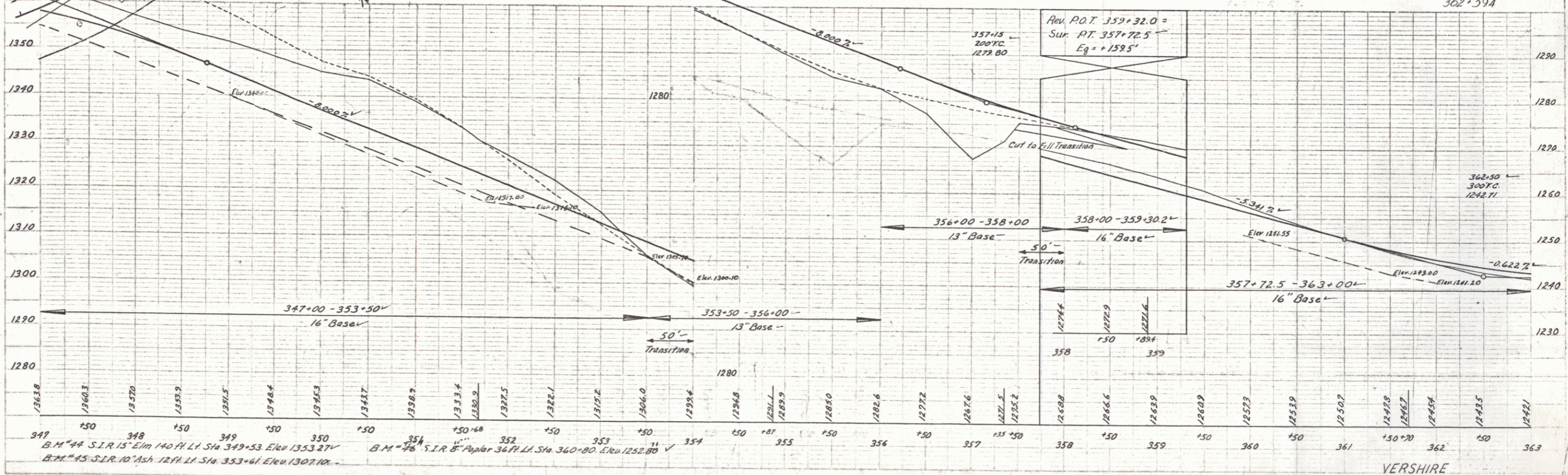
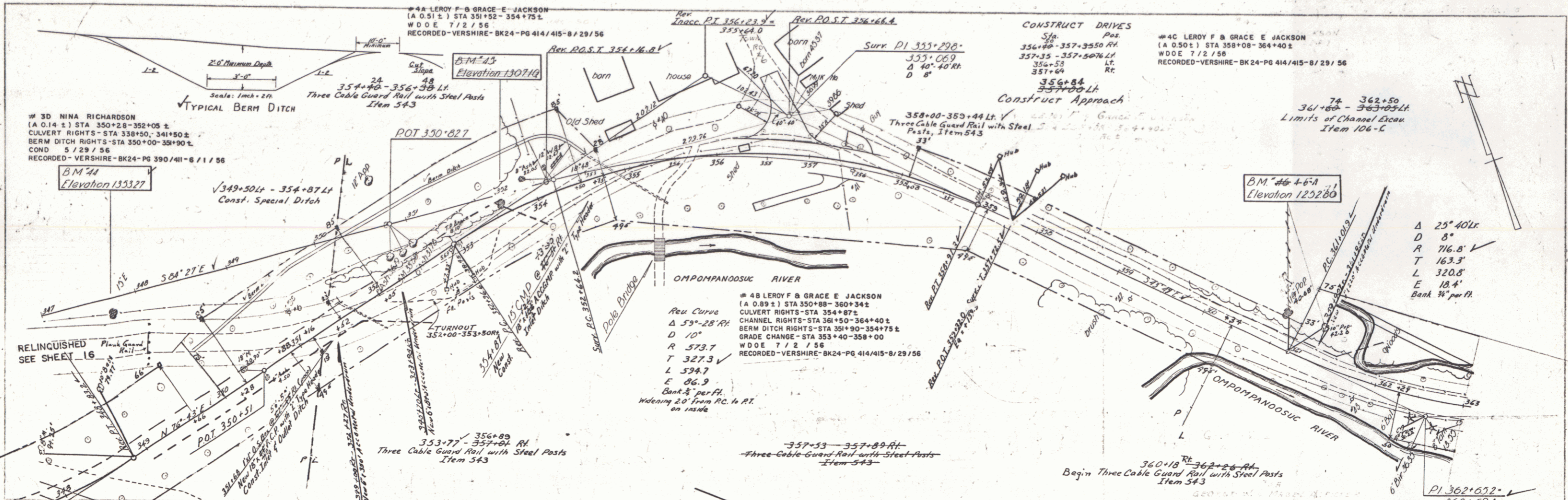
323+80 RA  
324+88  
323+80 RA - 324+88 on Approach  
Three Cable Guard Rail with Steel Posts, Item 543

Δ 25° 15' 22"  
D 12'  
R 478.3  
T 102.8'  
L 202.5'  
E 110'

Typical for Side Road

VERSHIRE  
Project S No 176 (6)  
Sheet 14 of 87 Sheets





PLAN  
 DATE: 11-27-56  
 DRAWN BY: [Name]  
 CHECKED BY: [Name]  
 PROJECT: [Name]

PROFILE  
 DATE: 11-27-56  
 DRAWN BY: [Name]  
 CHECKED BY: [Name]  
 PROJECT: [Name]

B.M. #44 S.I.R. 15' Elev. 1307.49  
 B.M. #45 S.I.R. 10' Elev. 1307.10

B.M. #46 S.I.R. 8' Elev. 1252.80  
 B.M. #47 S.I.R. 10' Elev. 1252.80

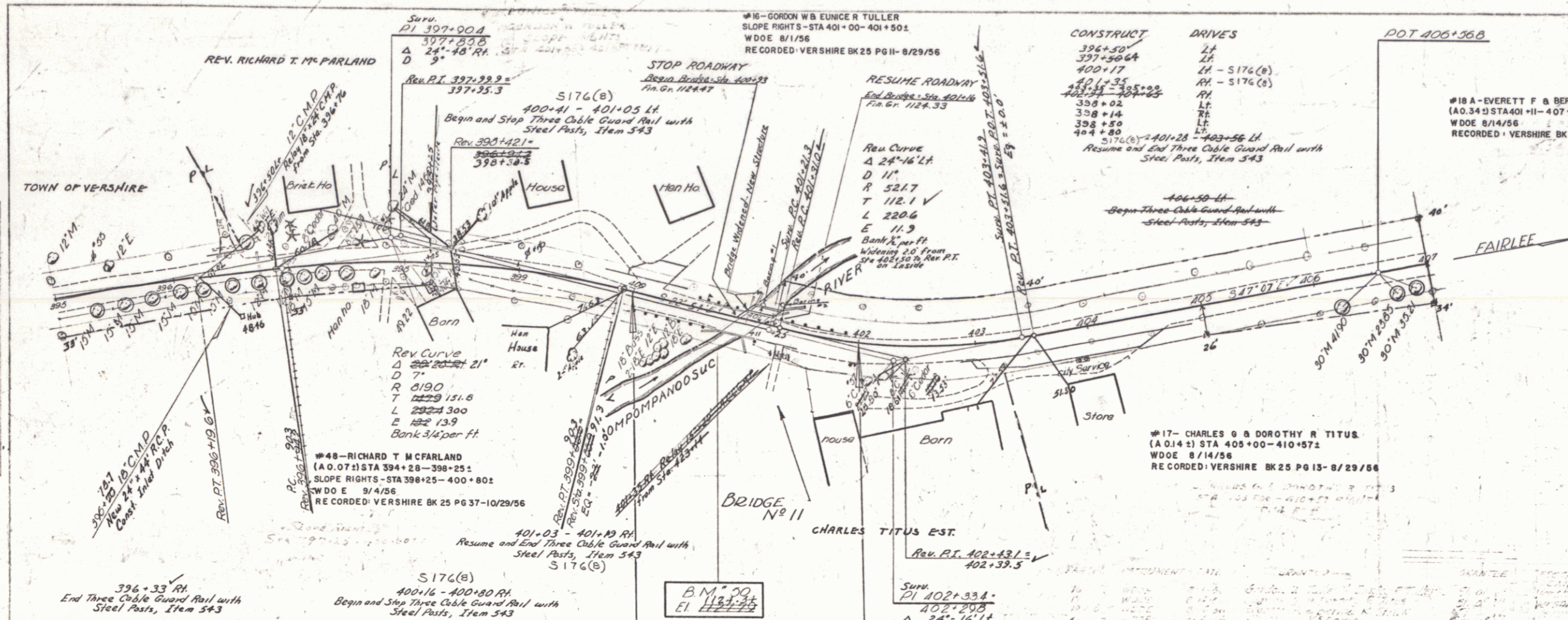
VERSHIRE  
 Project S No. 176 (6)  
 Sheet 17 of 57 Sheets





Scale  
 1" = 20'  
 1" = 40'  
 1" = 80'

Scale  
 1" = 20'  
 1" = 40'  
 1" = 80'



BRIDGE NO. 11 DATA

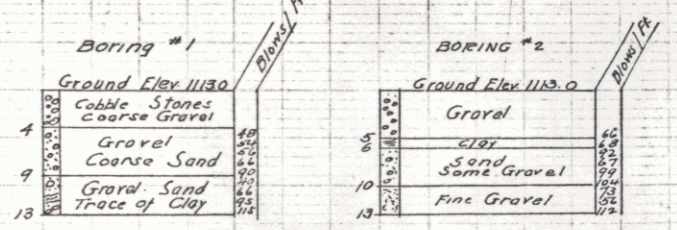
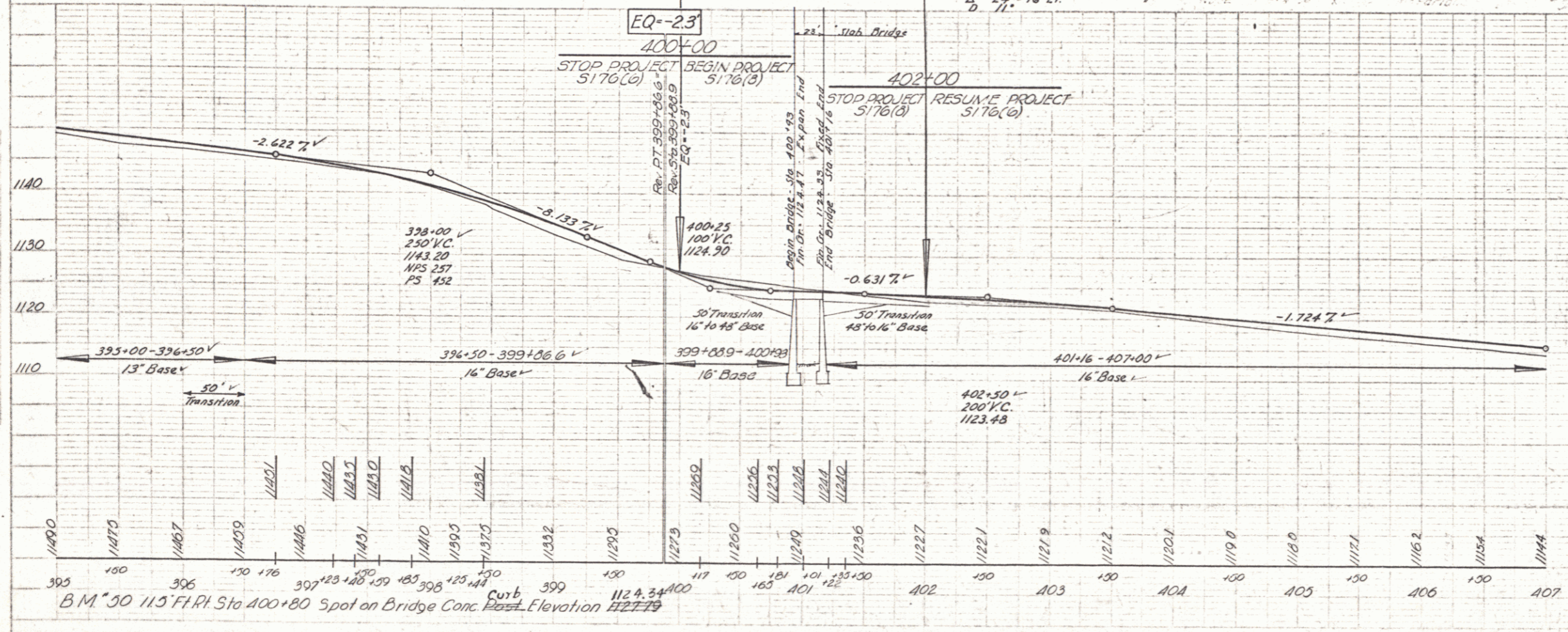
| TYPE                         | Present | Proposed |
|------------------------------|---------|----------|
| Overall Span ORS of Runway   | 23'     | 23'      |
| Clear " " " "                | 18.58'  | 19.58'   |
| " " Norm of to Stream        | 15.0'   | 15.0'    |
| Width - Face to Face of Curb | 8.0'    | 8.0'     |
| Clear Height                 | 9'      | 10'      |
| Waterway to Low Bridge Seat  | 135'    | 150'     |

ESTIMATED QUANTITIES - BRIDGE #11 ONLY

| Quantity | Unit | Item                                     | Item # |
|----------|------|--|--------|
| 122      | CY   | Unclassified Channel Excavation          | 106.5  |
| 4        | CY   | Concrete Class A (Mod.)                  | 401.0  |
| 106      | CY   | " " B (Mod.)                             | 402.0  |
| 3670     | Lbs  | Rein. Steel                              | 402    |
| 1        | LS   | Temporary Bridge                         | 441    |
| 46       | LF   | Three Cable Guard Rail (with Cable Dots) | 543    |
| 1        | LS   | Preparing Superstr. for Widening         | 574    |

LIST OF SHEETS - BRIDGE #11  
 Plan & Profile (This sheet)  
 Abutment #1 Detail Sheet  
 Abutment #2 " " "  
 Superstructure  
 Details: Post Plates & Hook Bolts

Reinforcing Steel on Combined Rein. Steel Schedule  
 See S.B. 20 for Details D-E & J  
 " S.B. 5 " Curb & Post Details



Wgt of Hammer = 350#  
 Drop of " = 24"  
 Dia. of Casing = 2 1/2"  
 Thickness of Casings = 3/8"

For Location of Borings, see Plan.

VERSHIRE  
 Proj. 5176(B)  
 Sheet 20 of 87  
 VERSHIRE  
 Project 5176(B)  
 Sheet 2 of 93  
 7 60

#198 ESTATE OF ERNEST LAKE  
(A 0.051) STA 413+50-418+00 ±  
SLOPE RTS - STA 413+50-418+50 ±  
CHANNEL CHG - STA 414+00-419+00  
BRIDGE RT-3 - STA 418+00  
ADMINIS DEED - 8/27/57  
RECORDED - VERSHIRE - BK 25-PG 64  
7/8/57

#19A ESTATE OF ERNEST LAKE  
(A 0.022) STA 411+26-411+60 ±  
WDOE 8/14/56  
RECORDED - VERSHIRE - BK 25-PG 15/16-8/29/56

#18B EVERETT F & BERTHA R STRAW  
(A 0.022) STA 411+26-411+60 ±  
WDOE 8/14/56  
RECORDED - VERSHIRE - BK 25-PG 14-8/29/56

#20A NORMAN M MCLEOD  
(A 0.041) STA 410+57-411+50 ±  
WDOE 8/1/56  
RECORDED - VERSHIRE - BK 25-PG 17-8/29/56

#20B NORMAN M MCLEOD  
(A 0.011) STA 413+00-413+50 ±  
WDOE 8/1/56  
RECORDED - VERSHIRE - BK 25-PG 17-8/29/56

| BRIDGE DATA (BR. N° 12)   |         |          |
|---------------------------|---------|----------|
| TYPE                      | PRESENT | PROPOSED |
| OVERALL LENGTH            | 24.75   | 26.75    |
| CLEAR SPAN L TO STREAM    | 20'     | 20'      |
| CLEAR HEIGHT              | 4.5'    | 4.5'     |
| ROADWAY WIDTH             | 20'     | 20'      |
| WATERWAYS                 | 20'     | 20'      |
| ELEVATION MAX. HIGH WATER | 1090.00 | 1090.00  |

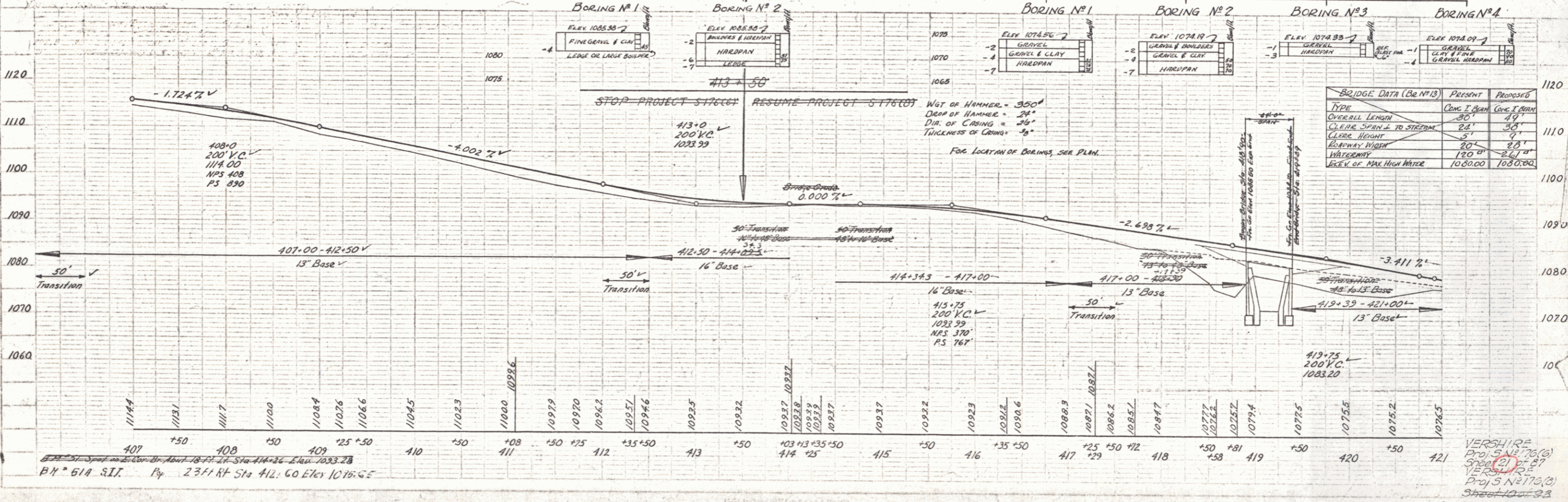
B.M. 57A  
Elev. 1075.66

BRIDGE N° 12

#21A MAX L & JOSEPHINE RIEGER  
(A 0.041) STA 414+50-416+75 ±  
COND. 5/29/56  
RECORDED - VERSHIRE - BK 24-PG 390/411  
8/1/56

#21B MAX L & JOSEPHINE RIEGER  
CHANNEL CHG - STA 414+00-419+00  
WDOE 8/20/57  
RECORDED - VERSHIRE - BK 25-PG 91  
8/31/57

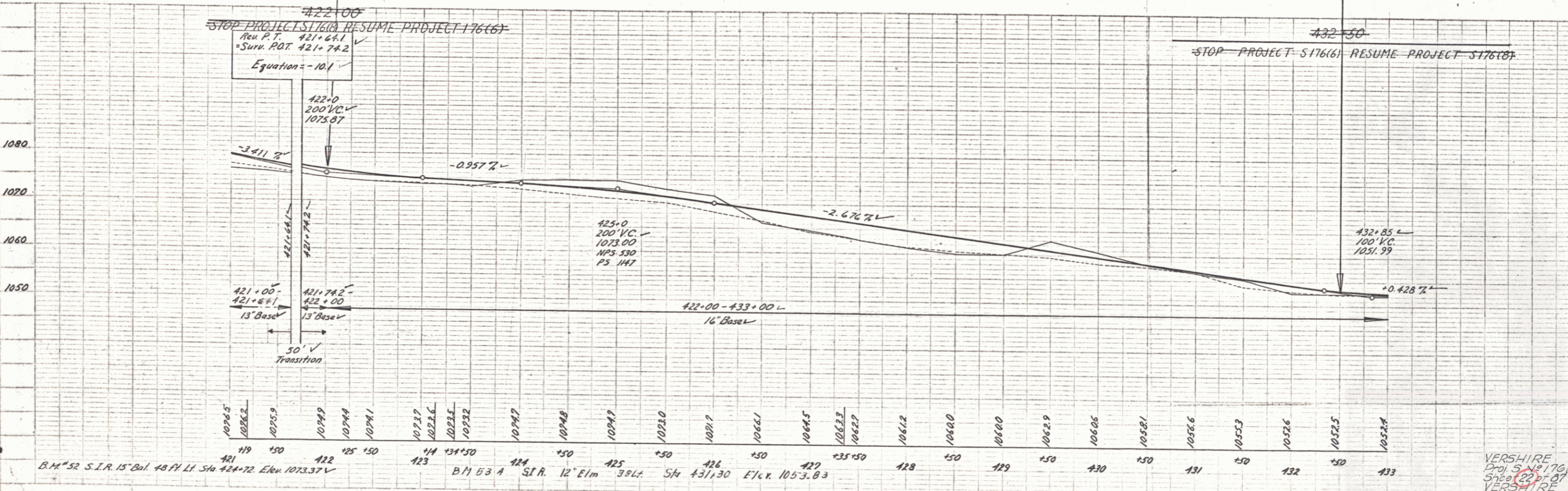
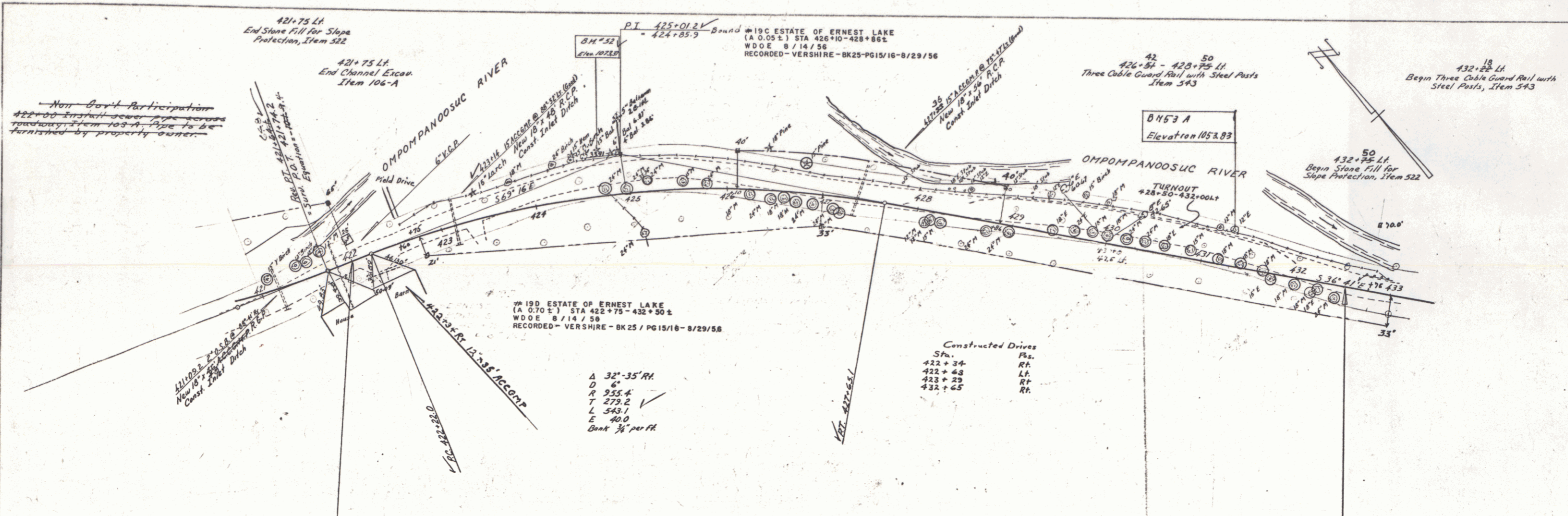
BRIDGE N° 13



| BRIDGE DATA (BR. N° 13)  |         |          |
|--------------------------|---------|----------|
| TYPE                     | PRESENT | PROPOSED |
| OVERALL LENGTH           | 30'     | 49'      |
| CLEAR SPAN L TO STREAM   | 24'     | 30'      |
| CLEAR HEIGHT             | 5'      | 9'       |
| ROADWAY WIDTH            | 20'     | 25'      |
| WATERWAYS                | 20'     | 25'      |
| ELEV. OF MAX. HIGH WATER | 1080.00 | 1080.00  |

B.M. 57A S.I.T. Py 237 ft Sta 412.60 Elev 1075.66

VERSHIRE  
PROJ. N° 76 (A)  
SHEET (2) OF 27  
VERSHIRE  
PROJ. N° 76 (B)  
SHEET 10 OF 23



PLAN  
 DATE: 11/11/55  
 DRAWN BY: [Signature]  
 CHECKED BY: [Signature]  
 PROJECT: [Signature]  
 SHEET NO. 11 OF 11

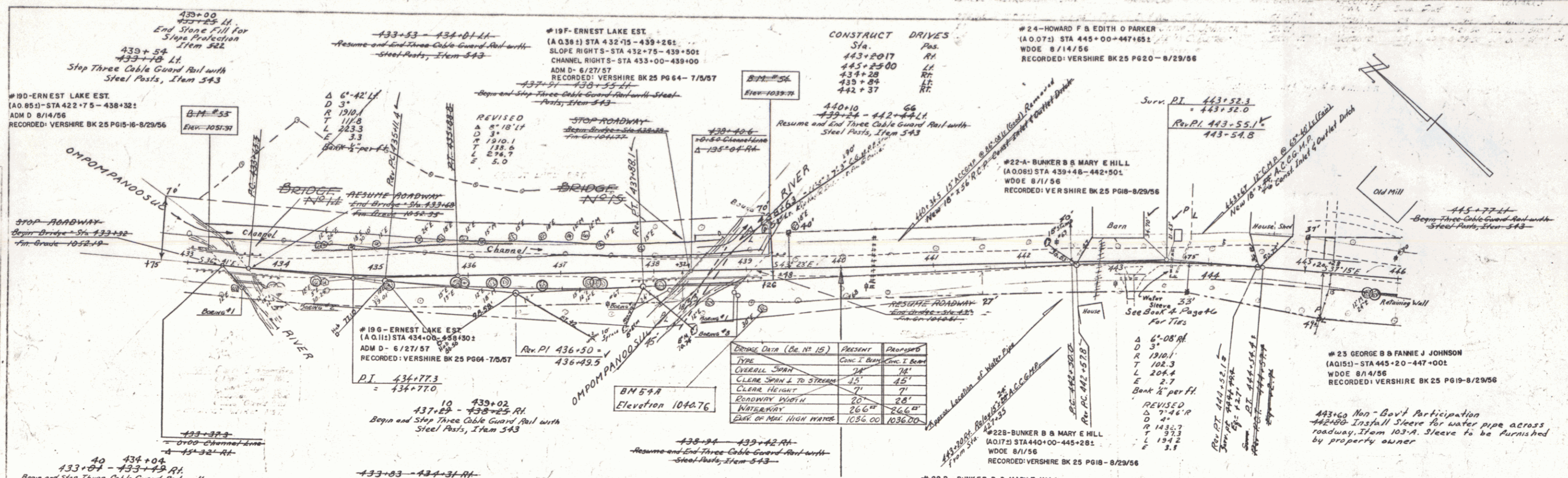
PROFILE  
 DATE: 11/11/55  
 DRAWN BY: [Signature]  
 CHECKED BY: [Signature]  
 PROJECT: [Signature]  
 SHEET NO. 11 OF 11

B.M. 52 S.I.R. 15' Bul. 48 Ft. Lt. Sta 424+72 Elev 1073.37

B.M. 53 A S.I.R. 12' E.I.M. 35 Ft. Sta 431+30 Elev 1053.83  
 B.M. 54 S.I.R. 12' E.I.M. 35 Ft. Sta 431+30 Elev 1053.83

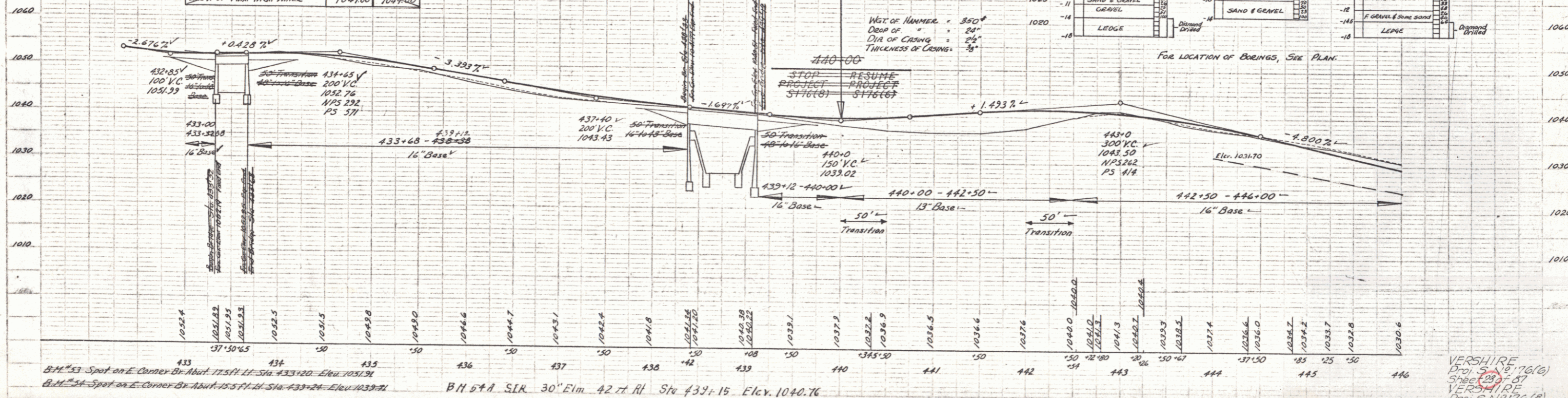
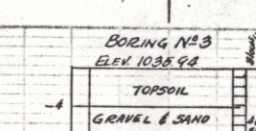
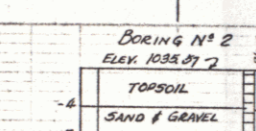
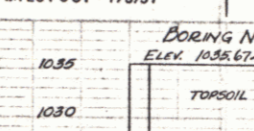
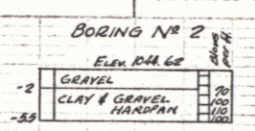
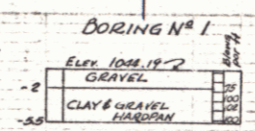
VERSHIRE  
 Proj. S.N. 176(C)  
 Sheet 11 of 11  
 VERSHIRE  
 Proj. S.N. 176(C)  
 Sheet 11 of 11

PLATS IN PLAN PROFILE & DATA RECORD  
 RECORD - VERSHIRE - BK 25 / PG 15/16 - 8/29/56



| BRIDGE DATA (Gr. No. 15) |          |
|--------------------------|----------|
| TYPE                     | Proposed |
| Overall Span             | 76'      |
| Clear Span L to Stream   | 45'      |
| Clear Height             | 7'       |
| Roadway Width            | 28'      |
| Waterway                 | 26.6'    |
| Elev. of Max. High Water | 1036.00  |

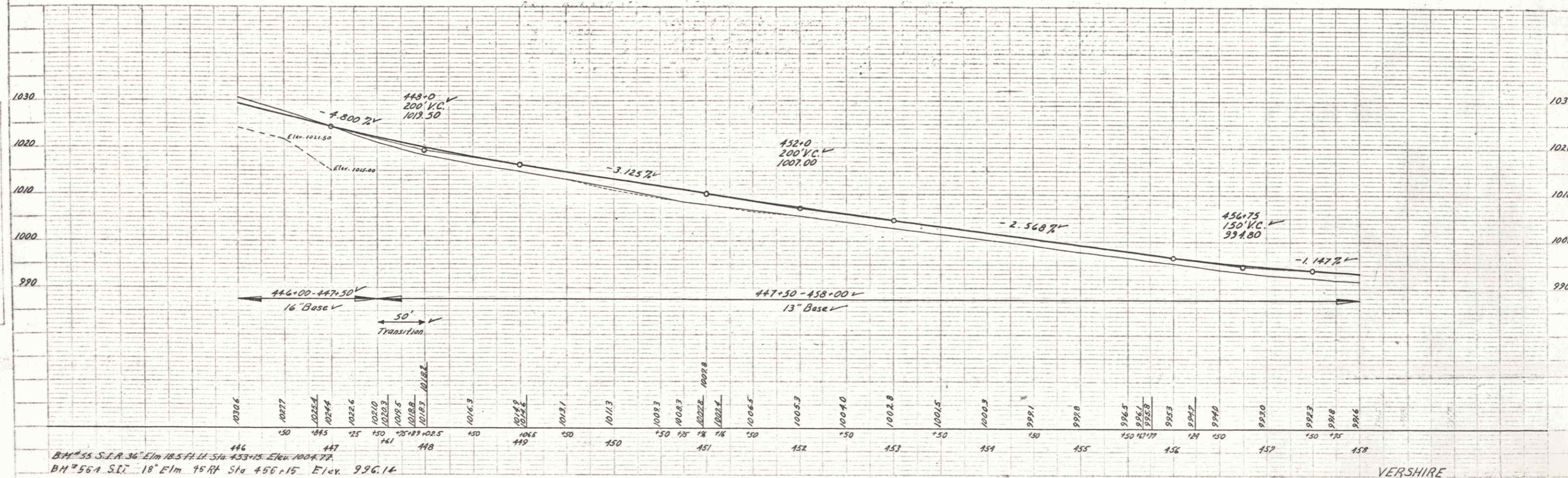
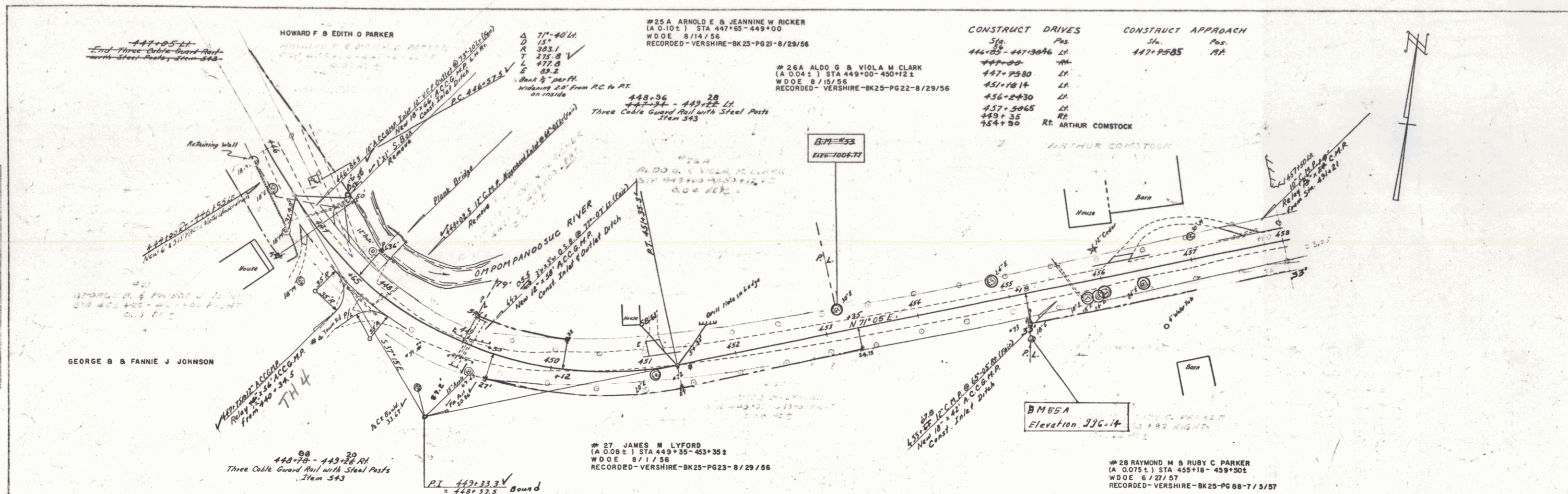
| BRIDGE DATA (Gr. No. 14) |          |
|--------------------------|----------|
| TYPE                     | Proposed |
| Overall Length           | 33'      |
| Clear Span L to Stream   | 19.5'    |
| Clear Height             | 6'       |
| Roadway Width            | 17'      |
| Waterway                 | 17'      |
| Elev. of Max. High Water | 1049.00  |



VERSHIRE  
Proj. S. 16, 76(c)  
Sheets 28, 27  
1/25/54/10/5  
Proj. S. 16, 76(B)  
Sheet 28, 27  
8 60

PLAN  
 DRAWN BY  
 CHECKED BY  
 DATE  
 SCALE

PROFILE  
 DRAWN BY  
 CHECKED BY  
 DATE  
 SCALE

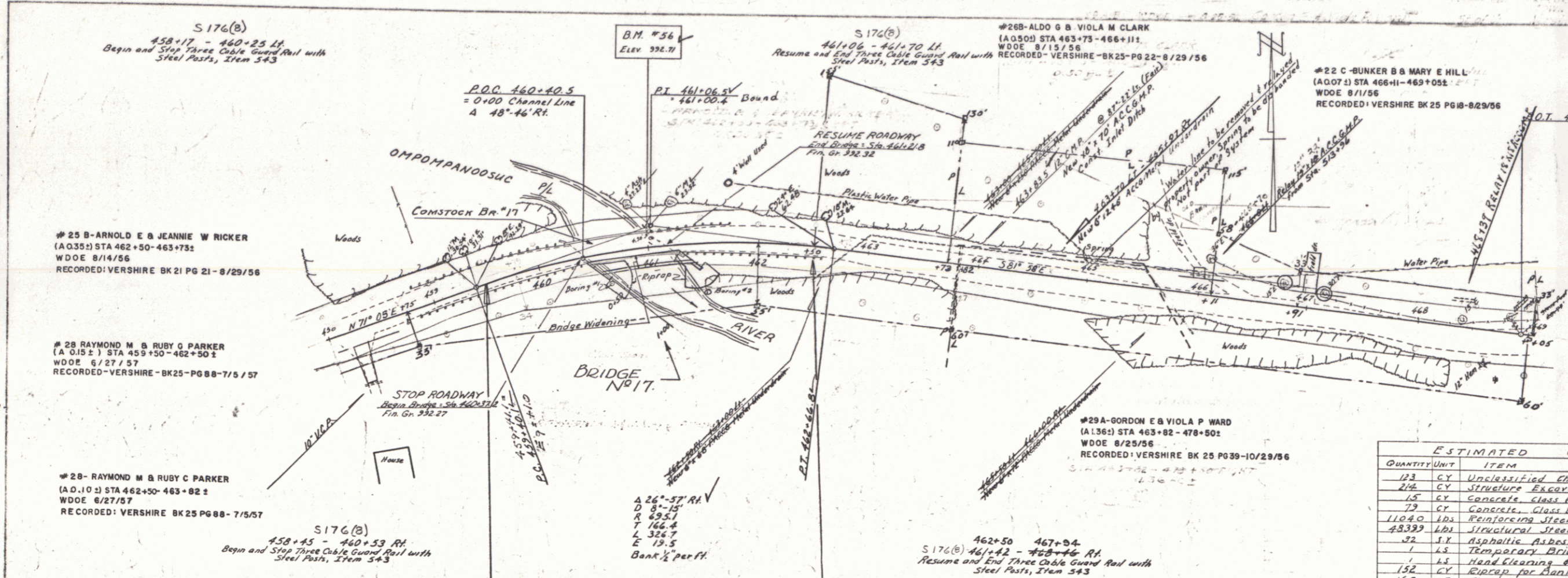


B.M. 55 S.I.R. 36' E 1m 18.5 ft. Sta. 433+25 Elev. 1004.77  
 B.M. 56 A S.I.R. 18' E 1m 75 ft. Sta. 456+15 Elev. 996.14

VERSHIRE  
 Project 5 No. 176(6)  
 Sheet 24 of 87 Sheets

PLAN  
 DATE: 8/1/56  
 DRAWN BY: [illegible]  
 CHECKED BY: [illegible]

PROFILE  
 DATE: 8/1/56  
 DRAWN BY: [illegible]  
 CHECKED BY: [illegible]



CONSTRUCT DRIVES

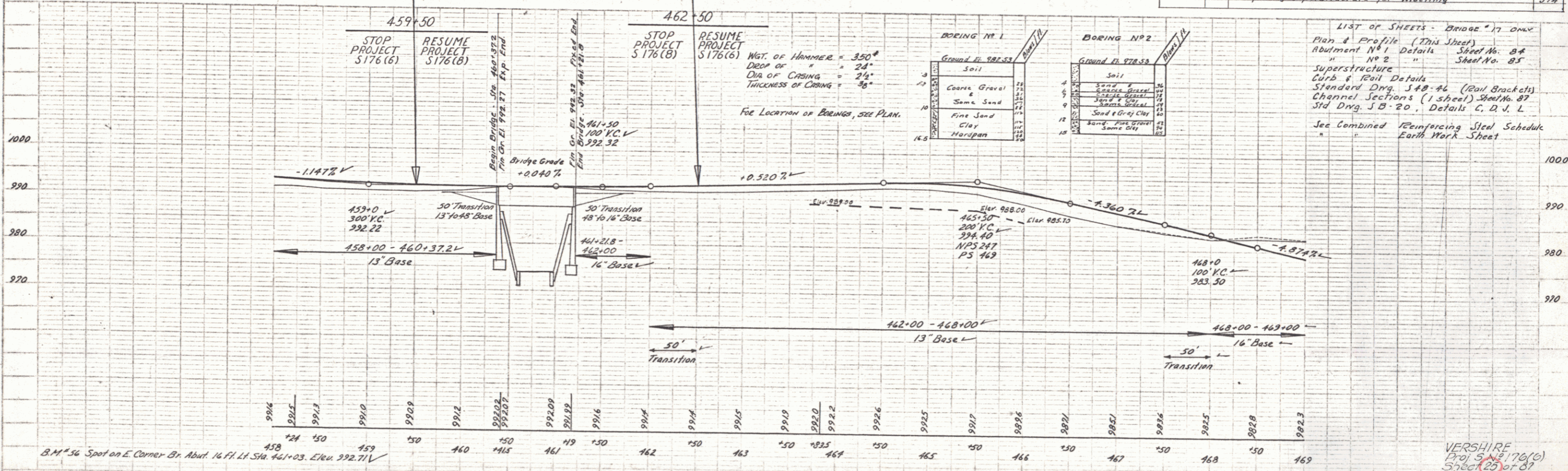
| Sta.      | Pos. |
|-----------|------|
| 458+24.28 | RT.  |
| 467+35    | LT.  |
| 467+00.24 | LT.  |
| 468+39    | RT.  |

COMSTOCK BRIDGE - NO. 17  
 BRIDGE DATA

| Type   | Present | Proposed |
|--|---------|----------|
| Overall Span on Rwy & Clear Span on Rwy & Normal to Stream | 84      | 84       |
| Rwy Width - fac. to fac. of curb                           | 78.34   | 78.34    |
| Normal H.W.  | 35.39   | 35.39    |
| Max. H.W.  | 20      | 20       |
| Normal H.V.V.  | 986.5   | 986.5    |
| Clear Height   | 978     | 978      |
| Waterway to low Bridge Seat                                | 14      | 14       |
|  | 100     | 100      |

ESTIMATED QUANTITIES - BRIDGE NO. 17

| QUANTITY | UNIT | ITEM  | ITEM NO. |
|----------|------|---|----------|
| 123      | CY   | Unexcavated Channel Excavation                                | 106-C    |
| 236      | CY   | Structure Excavation  | 107      |
| 15       | CY   | Concrete Class A (with modification of Coarse Aggr. See Note) | 101-A    |
| 79       | CF   | Concrete Class B (Modified)                                   | 401-B    |
| 110.0    | LBS  | REINFORCING STEEL (See Reinforcing Schedule)                  | 402      |
| 48,339   | LBS  | STRUCTURAL STEEL (Including Painting only)                    | 408-A    |
| 22       | S.Y. | Asphaltic Asbestos Coating                                    | 402      |
| 1        | L.S. | Temporary Bridge  | 481      |
| 1        | L.S. | Hand Clearing & Painting of Structural Steel                  | 508-A    |
| 152      | CY   | Excavation for Bank Protection                                | 528      |
| 16.8     | LF   | Three Cable Guard Rail w/ Steel Posts (Curb & Bracket only)   | 548      |
| 1        | L.S. | Preparing Superstructure for Widening                         | 574      |

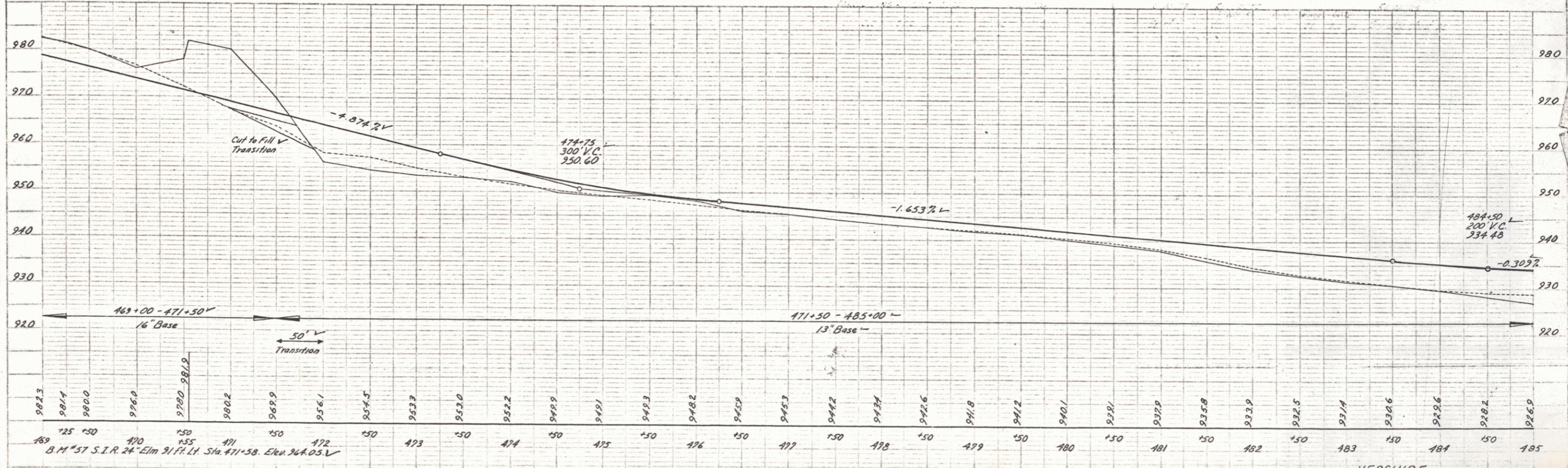
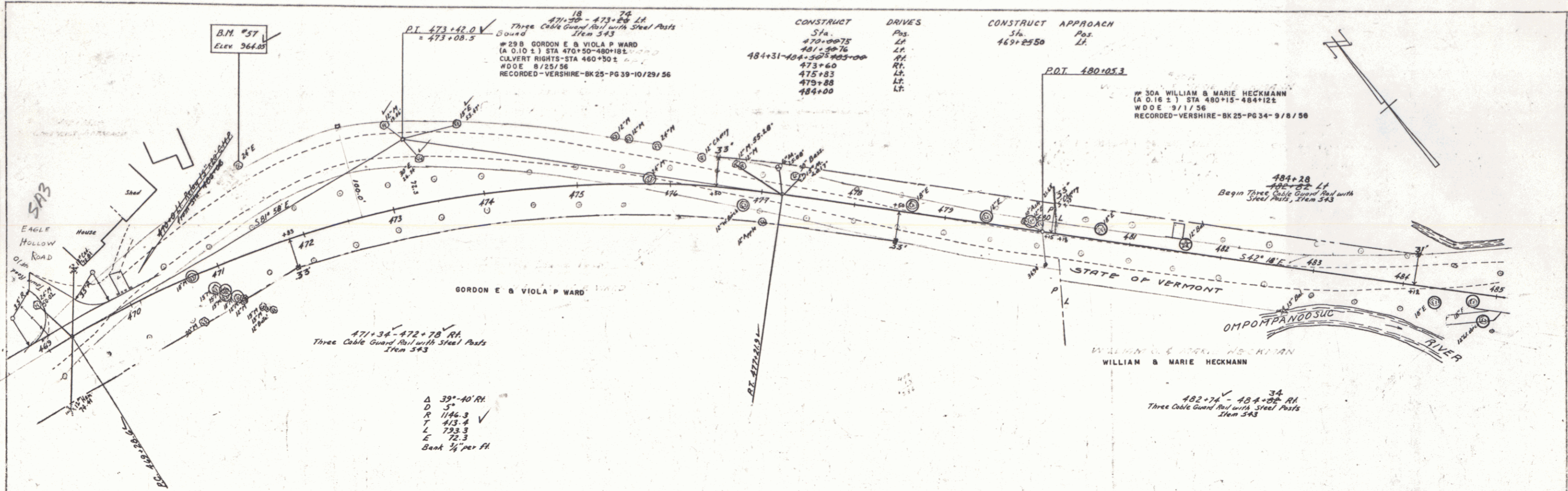


- LIST OF SHEETS - BRIDGE NO. 17 ONLY
- Plan & Profile (This Sheet)
  - Abutment No. 1 Detail Sheet No. 84
  - " No. 2 " " Sheet No. 85
  - Superstructure
  - Curb & Rail Details
  - Standard Dwg. 348-46 (Rail Brackets)
  - Channel Sections (1 sheet) Sheet No. 87
  - Std Dwg. S.D. 20, Details C, D, V, L
- See Combined Reinforcing Steel Schedule  
 Earth Work Sheet

VERSHIRE  
 Proj. S 176(B)  
 Sheet 9 of 87  
 VERSHIRE  
 Proj. S 176(B)  
 Sheet 9 of 87

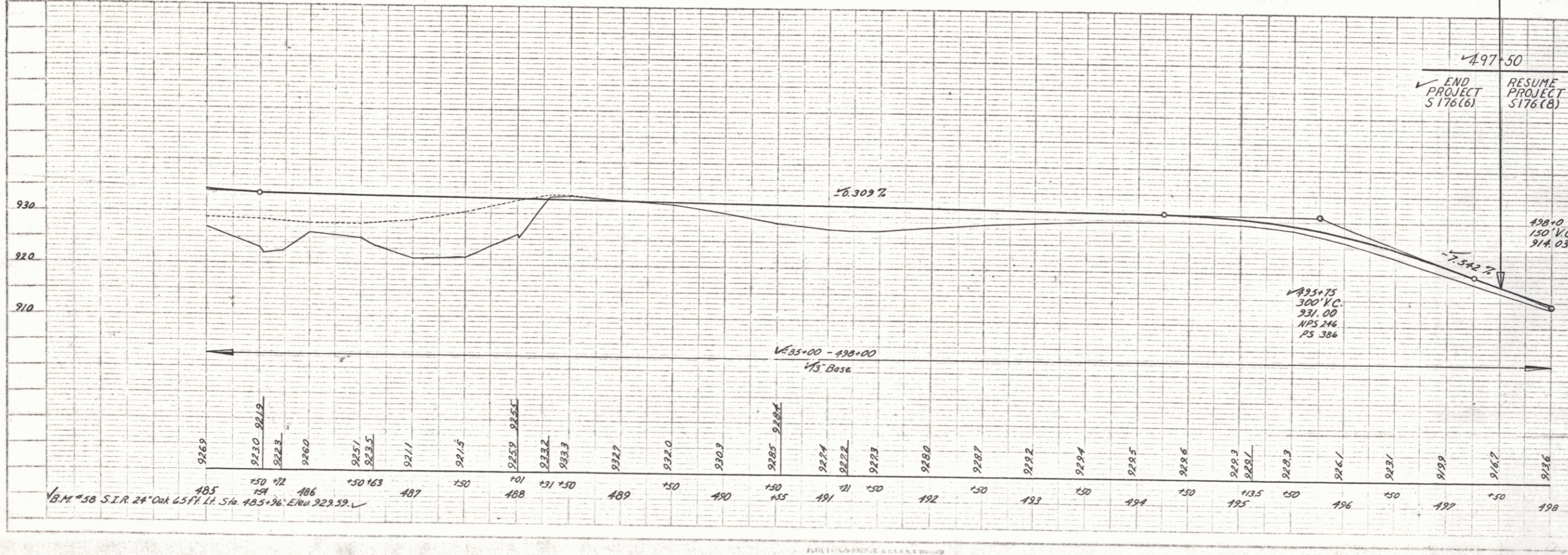
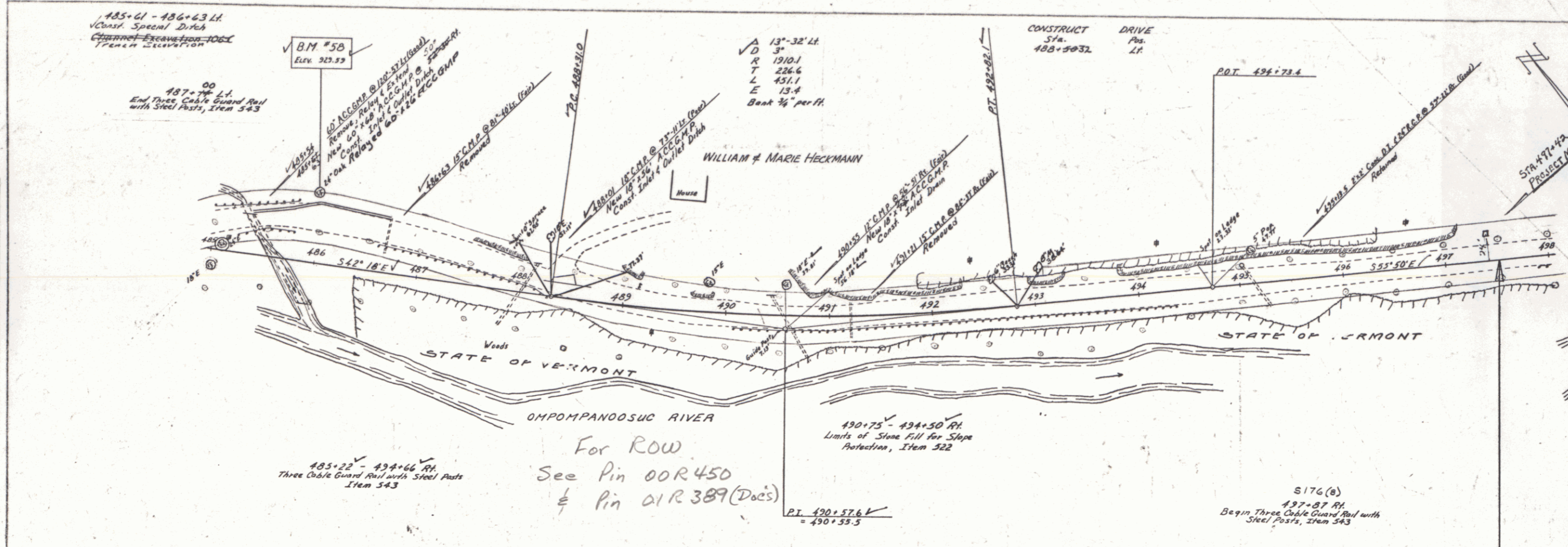
PLAN  
 NOTE: SEE SHEET 15 FOR CONTINUATION  
 DATE: 10/25/56

PROFILE  
 DATE: 10/25/56  
 NOTE: SEE SHEET 15 FOR CONTINUATION



PLAN  
 DATE: 10-5-57  
 DRAWN BY: [illegible]  
 CHECKED BY: [illegible]

PROFILE  
 DATE: 10-5-57  
 DRAWN BY: [illegible]  
 CHECKED BY: [illegible]



VERSHIRE  
 Proj. 5 N 176(6)  
 Sheet 27 of 37  
 VERSHIRE  
 Proj. 5 N 176(8)  
 Sheet 28 of 38  
 10 60