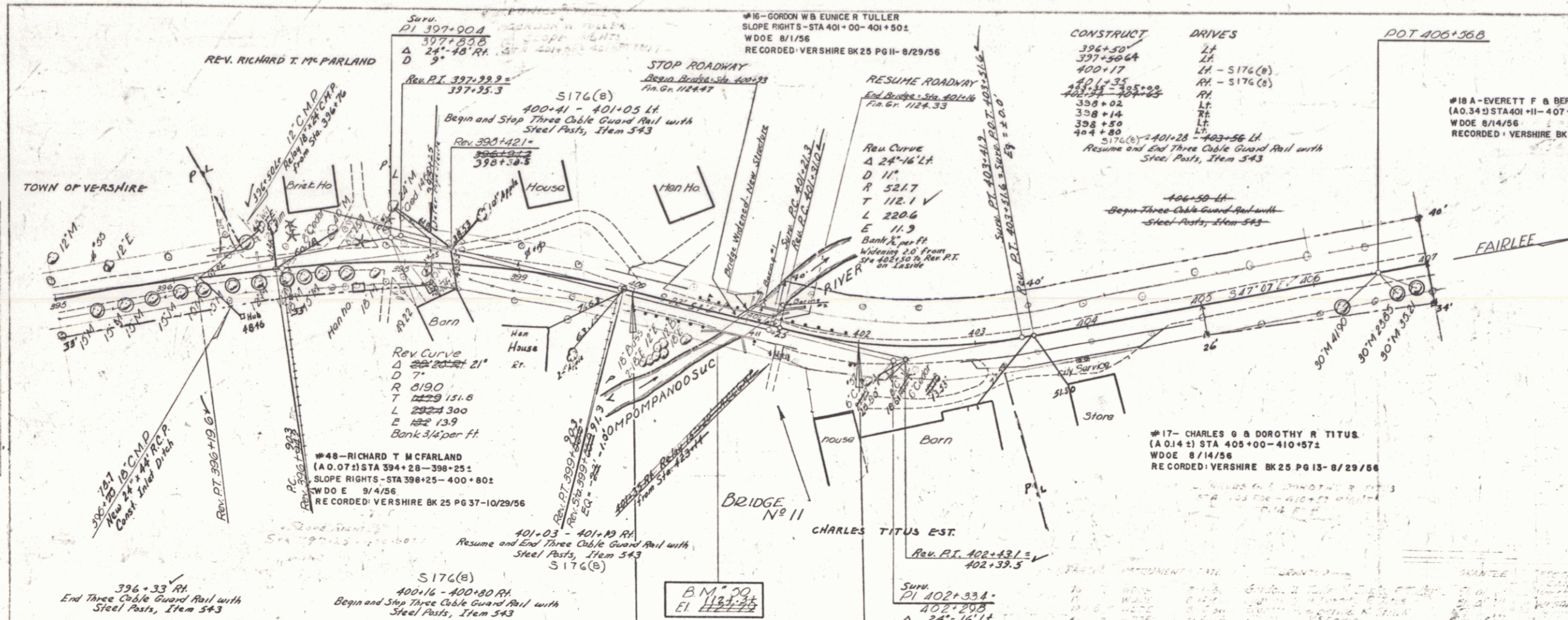


Scale
 1" = 20'
 1" = 40'
 1" = 80'

Scale
 1" = 20'
 1" = 40'
 1" = 80'



BRIDGE NO. 11 DATA

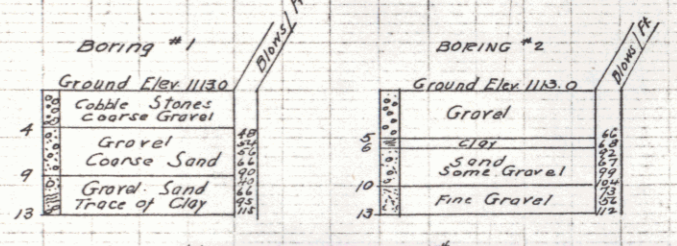
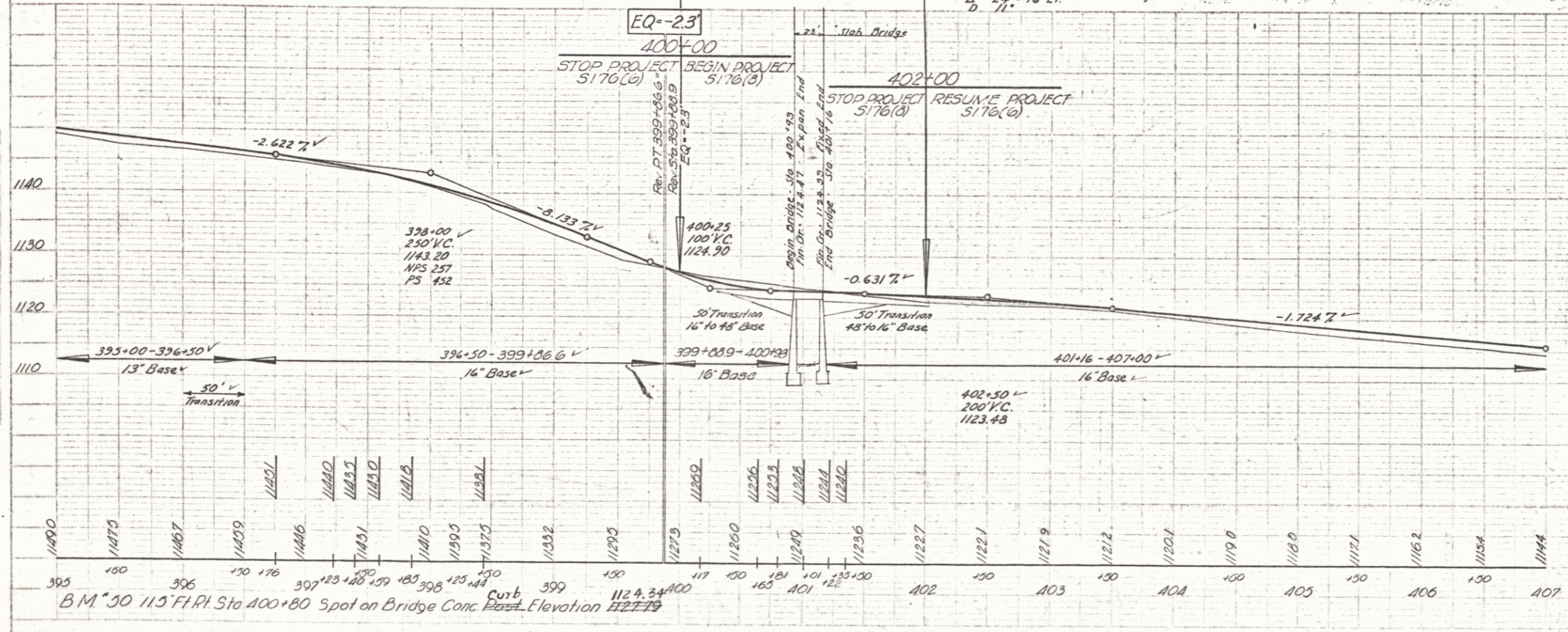
TYPE	Present	Proposed
Overall Span or E of Runway	23'	23'
Clear " " " "	18.58'	19.58'
" " Norm of to Stream	15.0'	15.0'
Width - Face to Face of Curb	8.0'	8.0'
Clear Height	9'	10'
Waterway to Low Bridge Seat	135'	150'

ESTIMATED QUANTITIES - BRIDGE #11 ONLY

Quantity	Unit	Item	Item #
122	CY	Unclassified Channel Excavation	106.5
4	CY	Concrete Class A (Mod.)	401.0
106	CY	" " B (Mod.)	401.0
3670	Lbs	Rein. Steel	402
1	LS	Temporary Bridge	441
46	LF	Three Cable Guard Rail with Steel Posts (Cable Only)	543
1	LS	Preparing Superstr. for Widening	574

LIST OF SHEETS - BRIDGE #11
 Plan & Profile (This sheet)
 Abutment #1 Detail Sheet
 Abutment #2 " " " "
 Superstructure
 Details: Post Plates & Hook Bolts

Reinforcing Steel on Combined Rein. Steel Schedule
 See S.B. 20 for Details D-E & J
 " S.B. 5 " Curb & Post Details



Wgt of Hammer = 350#
 Drop of " = 24"
 Dia. of Casing = 2 1/2"
 Thickness of Casing = 3/8"

For Location of Borings, see Plan.

VERSHIRE
 Proj. 51176(B)
 Sheet 20 of 87
 Project 5 No 176(B)
 Sheet 9 of 93
 7 60