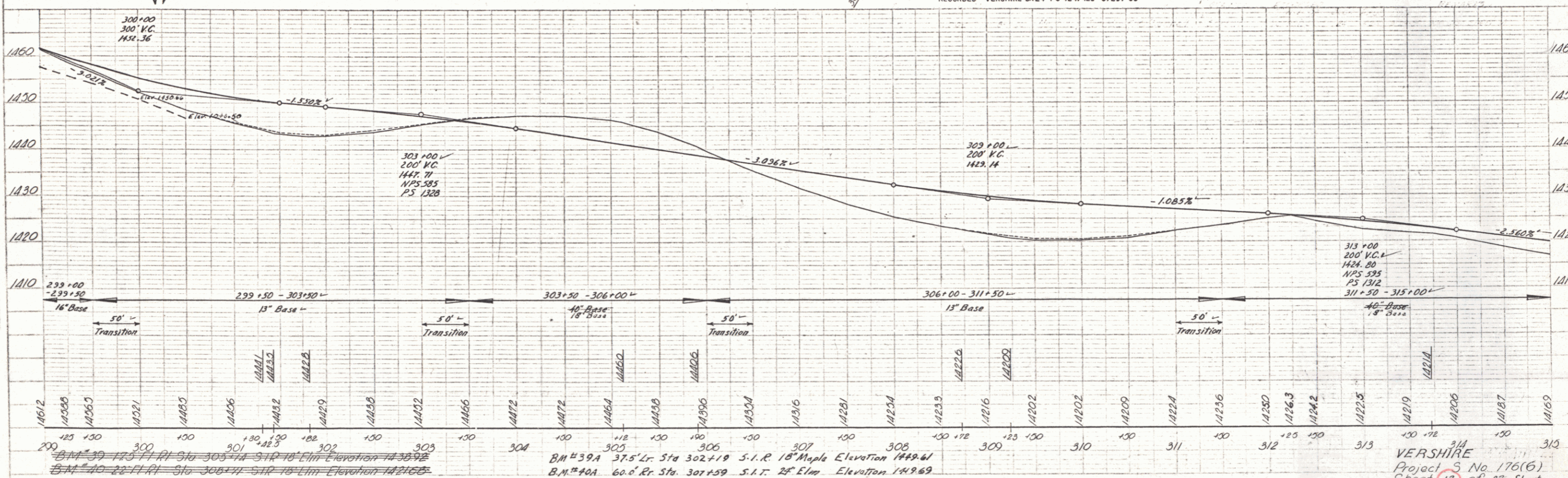
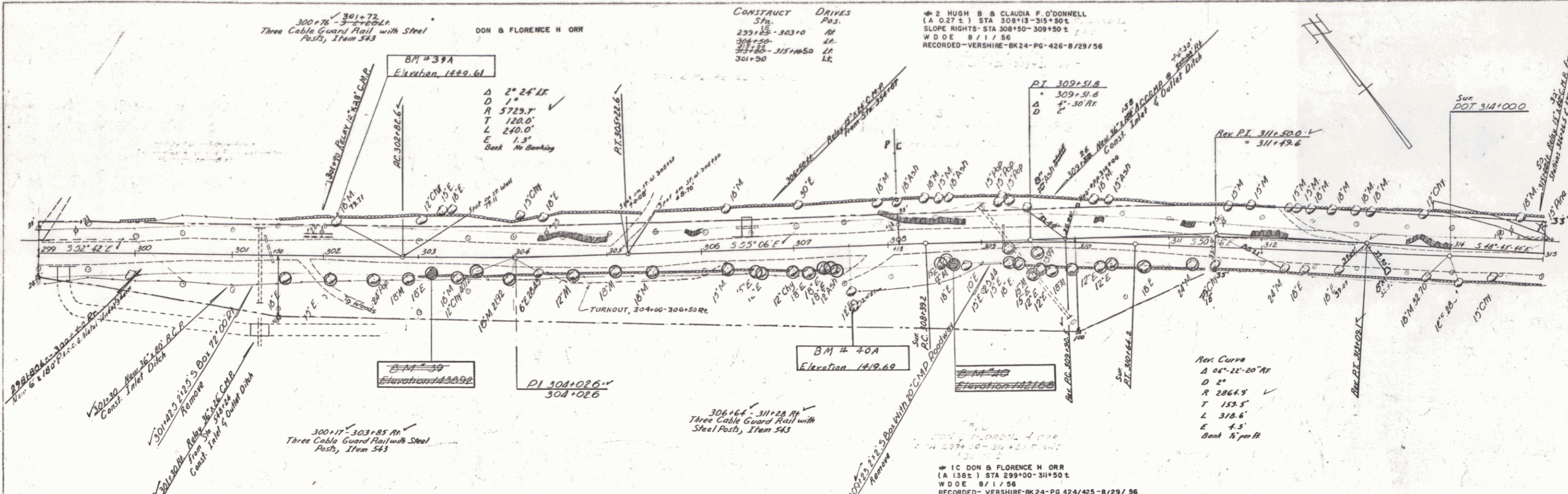


SPRINGER
11-31-56
2-36
Palmer

SPRINGER
11-31-56
2-36
Palmer



BM #39 175' Elev. Sta. 303+74 S.I.R. 10' Elm. Elevation 1438.92
 BM #40 22' Elev. Sta. 306+11 S.I.R. 10' Elm. Elevation 1421.65
 BM #39A 37.5' Elev. Sta. 302+19 S.I.R. 18' Maple Elevation 1449.61
 BM #40A 60.0' Elev. Sta. 301+59 S.I.R. 28' Elm. Elevation 1419.69

VERSHERE
Project 5 No. 176(6)
Sheet 13 of 87 Sheets