

- SHEET NO. 1 TITLE PAGE  
 2 TYPICAL CROSS-SECTION OF IMPROVEMENT (DOUBLE TACK COAT OF REFINED TAR WITH PEASTONE SEAL)  
 3 ROADWAY STANDARD SHEET RS 56-1 (BANKING)  
 4 ROADWAY STANDARD SHEET RS 56-12 (BARRICADES, SIGNS AND LIGHTS)  
 5 QUANTITY SHEET (ITEMS)  
 6 QUANTITY SHEET (DRAINAGE)  
 7-10 EARTHWORKS SHEETS  
 11-22 PLAN AND PROFILE SHEETS  
 23 ROADWAY STANDARD SHEET RS 56-3 (MARKERS)  
 24 ROADWAY STANDARD SHEET RS 56-4 (DRAINAGE)  
 25 ROADWAY STANDARD SHEET RS 56-6 (TYPICAL GRADING AND TURNOUTS)  
 26 ROADWAY STANDARD SHEET RS 56-11 (THREE CABLE GUARD RAIL)  
 27-66 CROSS SECTION SHEETS

| PROJECT NAME AND NUMBER                      | TYPE  | PVLT. AREA |
|--|---|------------|
| VERSHIRE - W. FAIRLEE S17.6(7) DOUBLE        | TK. CT. 39,203 sy.                                |            |
| <b>RECORD PLANS</b>                          |   |            |
| <b>MATERIALS</b>                             |   |            |
| PEASTONE - TWIN Side Lafarge, N.H.           | METAL PIPE - H.E. METAL PIPE 6.0                  |            |
| TAR - Superior Products - Corvallis, Mass.   | STEEL GUIDE POSTS - 2 1/2" dia. x 12" long        |            |
| R.C.P. - V.V. Concrete Pipe - Wiscasset, Vt. | GUARD RAIL - Bethlehem Steel, 12" dia. x 12" high |            |
| CONTRACTOR - Ralph B. Goodrich Inc.          | CONTRACT DATED - Dec. 15, 1957                    |            |
| RESIDENT ENGINEER - John H. Hughes           | CONTRACT STARTED - Jan. 14, 1957                  |            |
| INSPECTOR - Allen J. Davis                   | CONTRACT COMPLETED - Oct. 29, 1957                |            |
| RECORD PLANS - Ralph B. Goodrich             | CONTRACT ACCEPTED - Oct. 29, 1957                 |            |

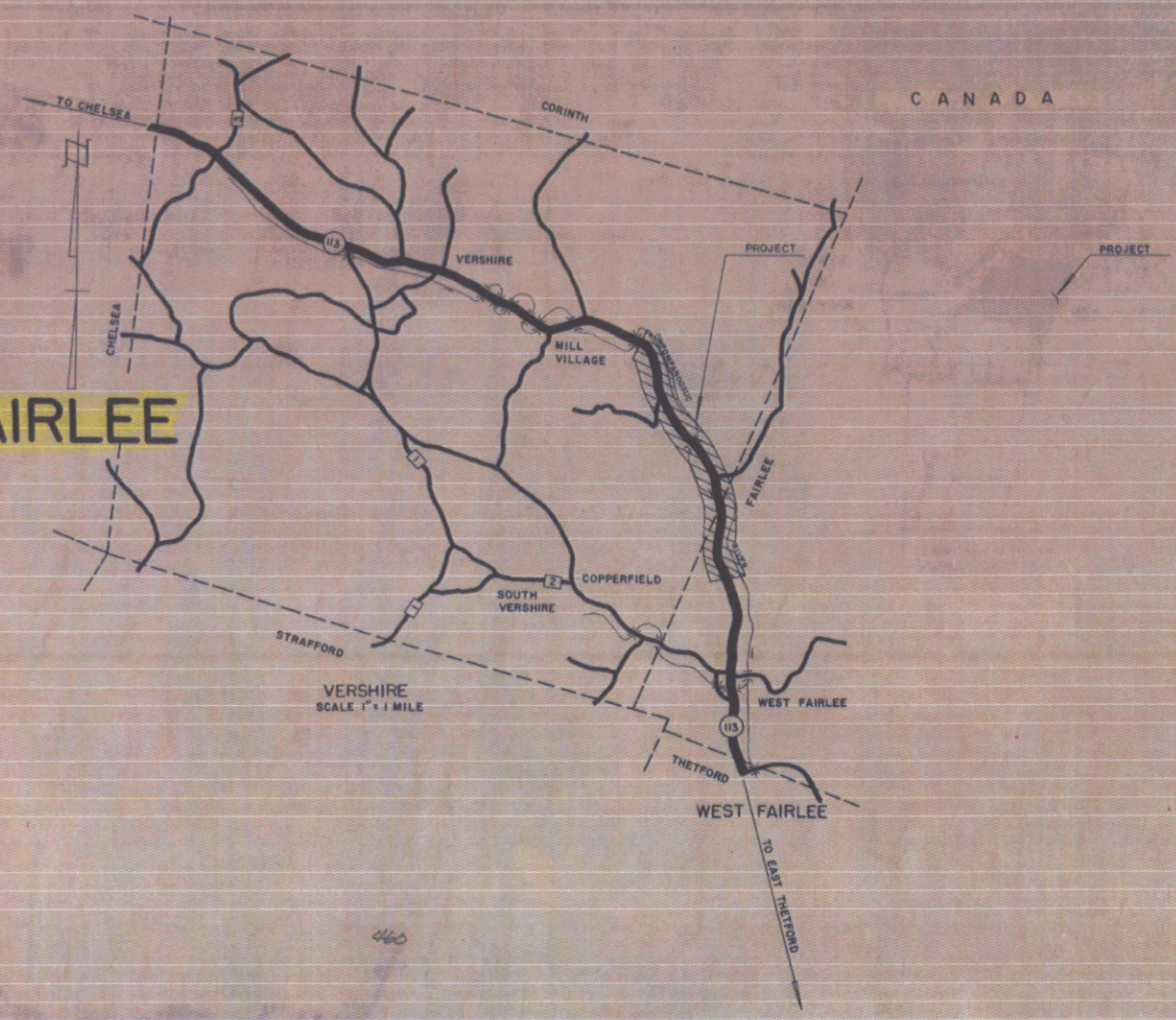
# TOWNS OF VERSHIRE - W. FAIRLEE

## COUNTY OF ORANGE

### CHELSEA - WEST FAIRLEE ROAD

### VERMONT ROUTE 113

BEGINNING AT A POINT APPROXIMATELY 21,566.3 FEET EASTERLY OF THE CHELSEA-VERSHIRE TOWN LINE AND EXTENDING EASTERLY 17,328.5 FEET EXCLUDING BRIDGES AND APPROACHES  
 LENGTH OF ROADWAY 16,778.5 FEET + 3.1777 MILES  
 LENGTH OF PROJECT 16,778.5 FEET + 3.1777 MILES



PROJECT Vershire - West Fairlee  
 NUMBER S 176 (7)  
 TYPE Double Tack Coat of Refined Tar with Peastone Seal  
 CONTRACTOR Ralph B. Goodrich Inc.  
 LOCATION Beginning at a point approximately 21,566.3 feet easterly of the Chelsea-Vershire town line and extending easterly 17,328.5 feet including bridges and approaches.  
 YEAR 1957

VERSHIRE - W. FAIRLEE S 176 (7)  
 CONTRACTOR - RALPH B. GOODRICH INC.  
 RECORD PLANS - Hughes - Davis  
 CONTRACT COMPLETED - OCT. 29, 1957

E. Walter  
 R. A. C. [Signature]  
 H. Sargent  
 NOV. 20, 1956  
 NOV. 19, 1956

CONSTRUCTION OF JANUARY 1956, AS APPROVED BY THE BUREAU OF PUBLIC ROADS JULY 5, 1956 INCLUDING ALL SUBSEQUENT APPROVED REVISIONS AND SUCH REVISED SPECIFICATIONS AND SPECIAL PROVISIONS AS ARE SUBMITTED WITH THE PLANS.

S 176 (7)  
 1 68



CONSTRUCT DRIVE  
 STA. 514+25 RM.  
 517+50 LT.  
 524+17 LT.

2C 85  
 519+28 - 520+85 LH  
 Three Cable Guard Rail with Steel Posts  
 Item 543

524+00 LH  
 522+34-2A  
 Begin Three Cable Guard Rail  
 with Steel Posts, Item 543  
 #33A RICHARD & MARTHA DARLING  
 (A.D. 132) STA 524+18-527+00  
 WDOE 8/29/56  
 RECORDED-VERSHIRE-BK 25-PG 33-9/8/56

#33A CARROLL F. NINA A. & FLOYD S. MATTOON  
 (A.O. 582) STA 527+00-538+50  
 WDOE 8/15/56  
 RECORDED-VERSHIRE-BK 25-PG 28/29-8/29/56

WALTER D. & MARY JANE WILLIAMS

#31C WALTER D. & MARY JANE WILLIAMS  
 (A.L. 1392) STA 516+30-527+94±  
 CULVERT RIGHTS-STA 520+50±  
 COND 5/29/56  
 RECORDED-VERSHIRE-BK 24-PG 390/411-6/1/56

MARION DOTH & HELEN MIKKELSEN

PLAN  
 DATE BOOKED  
 DRAWN BY  
 CHECKED BY  
 IN CHARGE

PROFILE  
 DATE BOOKED  
 DRAWN BY  
 CHECKED BY  
 IN CHARGE

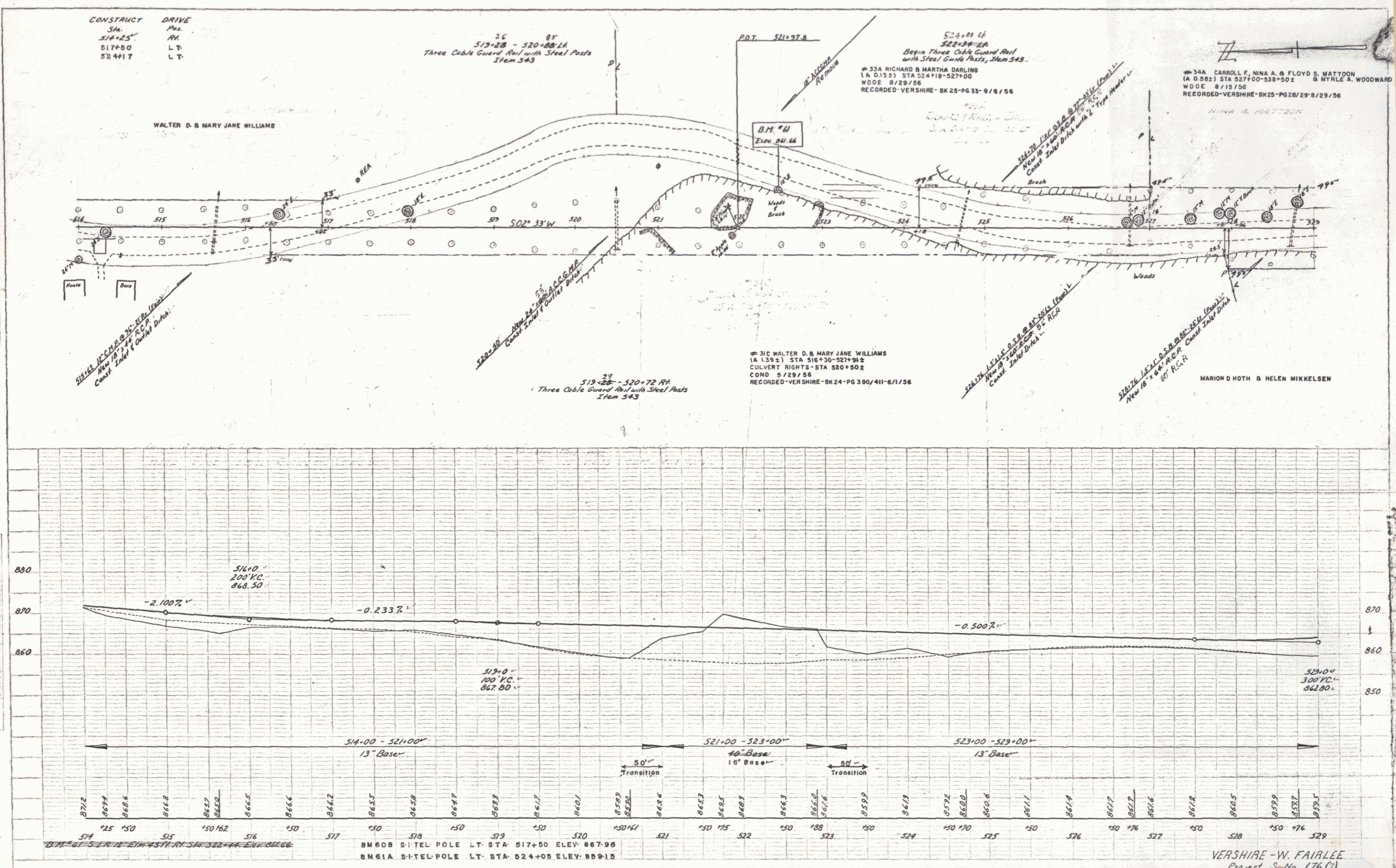


PLATE 1 - PLAN PROFILE & P.A.A.S. DRAWING  
 VERSHIRE - W. FAIRLEE

VERSHIRE - W. FAIRLEE  
 Project No. 176 (7)  
 Sheet 12 of 66 Sheets





**CONSTRUCT DRIVES**

| Sta    | Pos. |
|--------|------|
| 553+25 | RM   |
| 561+50 | RM   |
| 563+33 | RM   |
| 566+50 | LT   |
| 566+64 | RT   |
| 571+87 | RT   |

# 36 JOHN DARLING  
SLOPE RIGHTS - 563+00-564+00  
W.D.O.E. 8/15/56  
RECORDED - VERSHIRE - BK25-PG24-8/29/56

# 37A FLOYD S. & ALICE MATTOON  
(A.O.D. 2) STA 566+00-566+50  
W.D.O.E. 8/15/56  
RECORDED - VERSHIRE - BK25-PG26-8/29/56

# 37B FLOYD S. & ALICE MATTOON  
(A.O.D. 2) STA 573+00-578+50  
W.D.O.E. 8/15/56  
RECORDED - VERSHIRE - BK25-PG26-8/29/56

A 16'-43" LH  
D 6"  
R 255.4  
T 140.4  
L 278.6  
E 10.2  
Bank 3/4 per ft.

563+24 - 564+70 LH  
Begin and Stop Three Cable Guard Rail with Steel Posts, Item 543

STOP ROADWAY  
Begin Bridge - Sta. 564+87  
Fin. Gr. 797.99

RESUME ROADWAY  
End Bridge - Sta. 563+81  
Fin. Gr. 798.63

565+47 - 565+35 RT  
Resume and Stop Three Cable Guard Rail with Steel Posts, Item 543

A 33'-06" RH  
D 5"  
R 1146.3  
T 340.6  
L 662.0  
E 43.5  
Bank 3/4 per ft.

563+48 - 565+025 RH  
Begin and Stop Three Cable Guard Rail with Steel Posts, Item 543

572+25 RT  
Begin Three Cable Guard Rail with Steel Posts, Item 543

572+25 RT  
572+30-RT  
Begin Three Cable Guard Rail with Steel Posts, Item 543

572+25 RT  
572+30-RT  
Begin Three Cable Guard Rail with Steel Posts, Item 543

572+25 RT  
572+30-RT  
Begin Three Cable Guard Rail with Steel Posts, Item 543

572+25 RT  
572+30-RT  
Begin Three Cable Guard Rail with Steel Posts, Item 543

572+25 RT  
572+30-RT  
Begin Three Cable Guard Rail with Steel Posts, Item 543

572+25 RT  
572+30-RT  
Begin Three Cable Guard Rail with Steel Posts, Item 543

572+25 RT  
572+30-RT  
Begin Three Cable Guard Rail with Steel Posts, Item 543

572+25 RT  
572+30-RT  
Begin Three Cable Guard Rail with Steel Posts, Item 543

572+25 RT  
572+30-RT  
Begin Three Cable Guard Rail with Steel Posts, Item 543

572+25 RT  
572+30-RT  
Begin Three Cable Guard Rail with Steel Posts, Item 543

572+25 RT  
572+30-RT  
Begin Three Cable Guard Rail with Steel Posts, Item 543

572+25 RT  
572+30-RT  
Begin Three Cable Guard Rail with Steel Posts, Item 543

572+25 RT  
572+30-RT  
Begin Three Cable Guard Rail with Steel Posts, Item 543

572+25 RT  
572+30-RT  
Begin Three Cable Guard Rail with Steel Posts, Item 543

572+25 RT  
572+30-RT  
Begin Three Cable Guard Rail with Steel Posts, Item 543

572+25 RT  
572+30-RT  
Begin Three Cable Guard Rail with Steel Posts, Item 543

572+25 RT  
572+30-RT  
Begin Three Cable Guard Rail with Steel Posts, Item 543

572+25 RT  
572+30-RT  
Begin Three Cable Guard Rail with Steel Posts, Item 543

572+25 RT  
572+30-RT  
Begin Three Cable Guard Rail with Steel Posts, Item 543

572+25 RT  
572+30-RT  
Begin Three Cable Guard Rail with Steel Posts, Item 543

572+25 RT  
572+30-RT  
Begin Three Cable Guard Rail with Steel Posts, Item 543

572+25 RT  
572+30-RT  
Begin Three Cable Guard Rail with Steel Posts, Item 543

572+25 RT  
572+30-RT  
Begin Three Cable Guard Rail with Steel Posts, Item 543

572+25 RT  
572+30-RT  
Begin Three Cable Guard Rail with Steel Posts, Item 543

572+25 RT  
572+30-RT  
Begin Three Cable Guard Rail with Steel Posts, Item 543

572+25 RT  
572+30-RT  
Begin Three Cable Guard Rail with Steel Posts, Item 543

572+25 RT  
572+30-RT  
Begin Three Cable Guard Rail with Steel Posts, Item 543

572+25 RT  
572+30-RT  
Begin Three Cable Guard Rail with Steel Posts, Item 543

572+25 RT  
572+30-RT  
Begin Three Cable Guard Rail with Steel Posts, Item 543

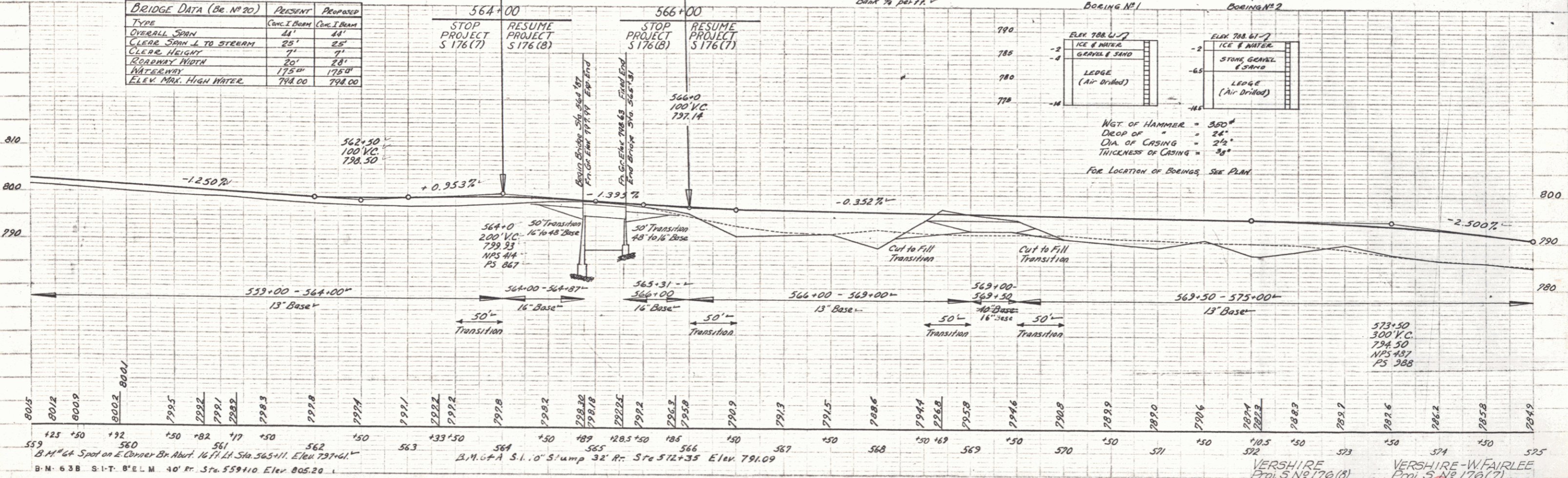
572+25 RT  
572+30-RT  
Begin Three Cable Guard Rail with Steel Posts, Item 543

2) Non - Bort Participation  
561+49 Install sleeve for water pipe across roadway, Item 103-A. Sleeve to be furnished by property owner Length 7'

# 35 B HARRY BAILEY  
(A.O.D. 2) STA 562+00-564+00  
W.D.O.E. 8/15/56  
RECORDED - VERSHIRE - BK25-PG32-9/8/56

**BRIDGE DATA (Bc. No. 20)**

| TYPE                  | PRESENT | PROPOSED |
|-----------------------|---------|----------|
| OVERALL SPAN          | 41'     | 41'      |
| CLEAR SPAN L TO STEAM | 25'     | 25'      |
| CLEAR HEIGHT          | 7'      | 7'       |
| ROADWAY WIDTH         | 20'     | 28'      |
| WATERWAY              | 175"    | 178"     |
| ELEV. MAX. HIGH WATER | 794.00  | 798.00   |



559+00 - 564+00" 13' Base  
564+00 - 564+87" 16' Base  
564+87 - 565+31" 16' Base  
565+31 - 566+00" 13' Base  
566+00 - 569+00" 13' Base  
569+00 - 569+50" 16' Base  
569+50 - 575+00" 13' Base

559 560 561 562 563 564 565 566 567 568 569 570 571 572 573 574 575

B.M. #64 Spot on E. Corner Br. Abut. 16' LH Sta. 565+11. Elev. 797.61  
B.M. #63B S.I.T. O.E.L.M. 40' Rt. Sta. 559+10 Elev. 805.20

VERSHIRE  
Proj. S. No. 176 (8)  
Sheet 10 of 60

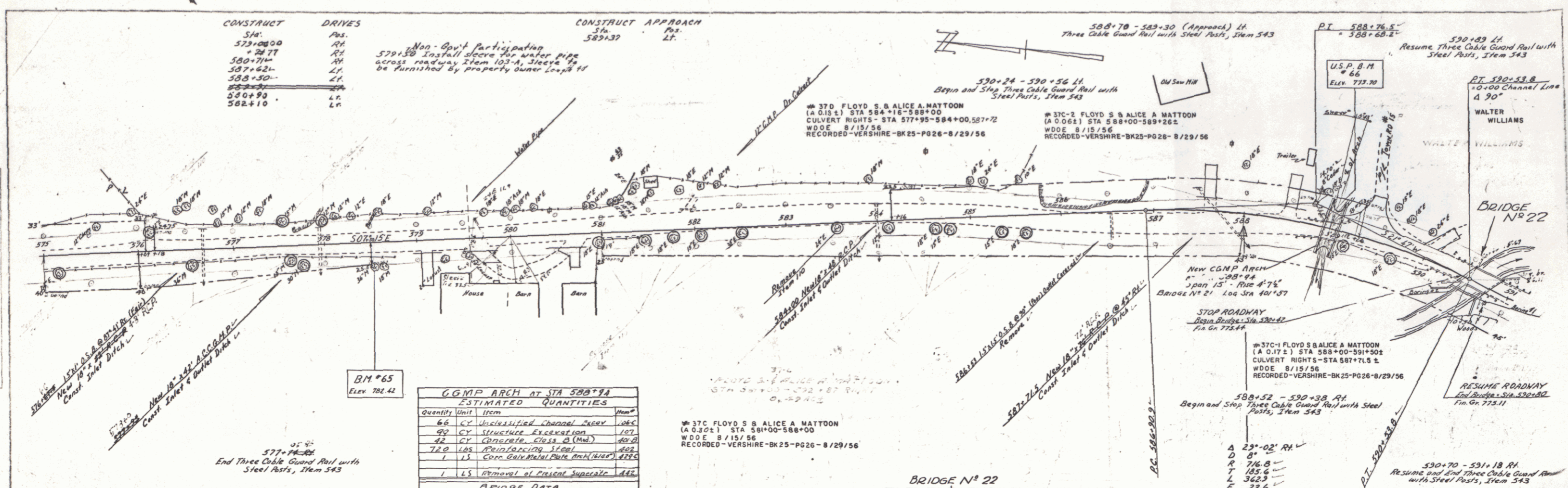
VERSHIRE - W. FAIRLEE  
Proj. S. No. 176 (7)  
Sheet 15 of 60

6

| CONSTRUCT STA. | DRIVES Pos. |
|----------------|-------------|
| 579+00.00      | RT          |
| + 21.77        | RT          |
| 580+71.4       | RT          |
| 587+62.1       | LT          |
| 588+50.0       | LT          |
| 588+50.0       | LT          |
| 589+99         | LT          |
| 582+10         | LT          |

CONSTRUCT APPROACH  
Sta. 589+37  
Pos. LT.

Non-Op't Participation  
579+50 Install sleeve for water pipe  
across roadway Item 103-A, Streets to  
be furnished by property owner except for



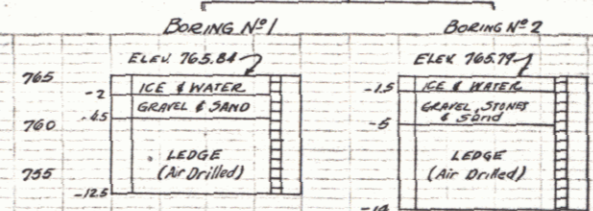
**CGMP ARCH AT STA 588+98**

| Quantity | Unit | Item                              | Proposed |
|----------|------|-----------------------------------|----------|
| 6.6      | CY   | Unclassified Channel Excav        | 262      |
| 92       | CY   | STRUCTURE EXCAVATION              | 127      |
| 42       | CY   | CONCRETE CLASS 2 (Wt.)            | 40.0     |
| 72.0     | LBS  | REINFORCING STEEL                 | 408      |
| 1        | LS   | CORR GALV METAL PLATE ARCH (W/SP) | 220      |
| 1        | LS   | REMOVAL OF EXISTING SUPERSTRA     | 442      |

**BRIDGE DATA**

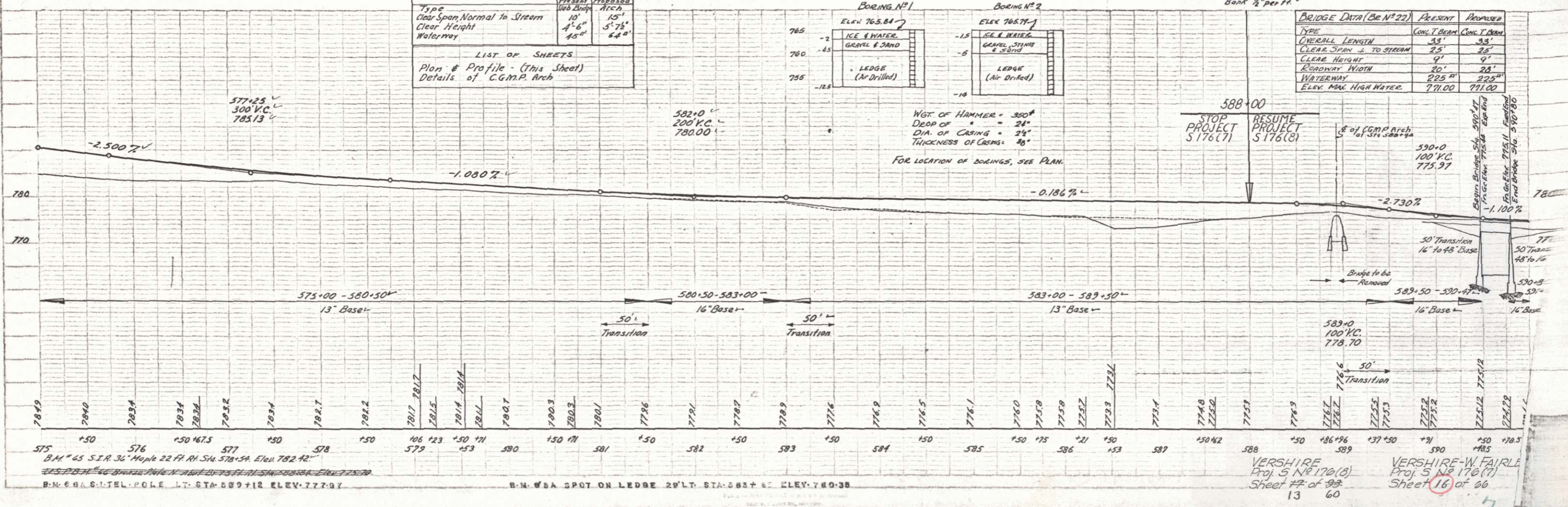
| Type                        | Present | Proposed  |
|-----------------------------|---------|-----------|
| Clear Span Normal to Stream | 10'     | 15'       |
| Clear Height                | 4'-6"   | 5'-7 1/2" |
| Waterway                    | 45'     | 64'       |

LIST OF SHEETS  
Plan & Profile - (This Sheet)  
Details of CGMP Arch



**BRIDGE DATA (On No. 22)**

| Type                  | Present | Proposed |
|-----------------------|---------|----------|
| GENERAL LENGTH        | 53'     | 58'      |
| CLEAR SPAN TO STREAM  | 25'     | 28'      |
| CLEAR HEIGHT          | 9'      | 9'       |
| ROADWAY WIDTH         | 20'     | 28'      |
| WATERWAY              | 225'    | 225'     |
| ELEV. MAX. HIGH WATER | 771.00  | 771.00   |



PLAN  
SCALE: 1" = 40'

PROFILE  
SCALE: 1" = 10'

VERSHIRE Proj. 5 NB 170(8) Sheet # of 98 13 60  
VERSHIRE-W FAIRLE Proj. 5 NB 170(7) Sheet # of 66 16 of 66

# 31 D. WALTER D & MARY JANE WILLIAMS  
(A 0.02%) STA 594+00-595+68.2  
COND. 5/29/56  
RECORDED - VERSHIRE - BK 24-390/411-6/1/56

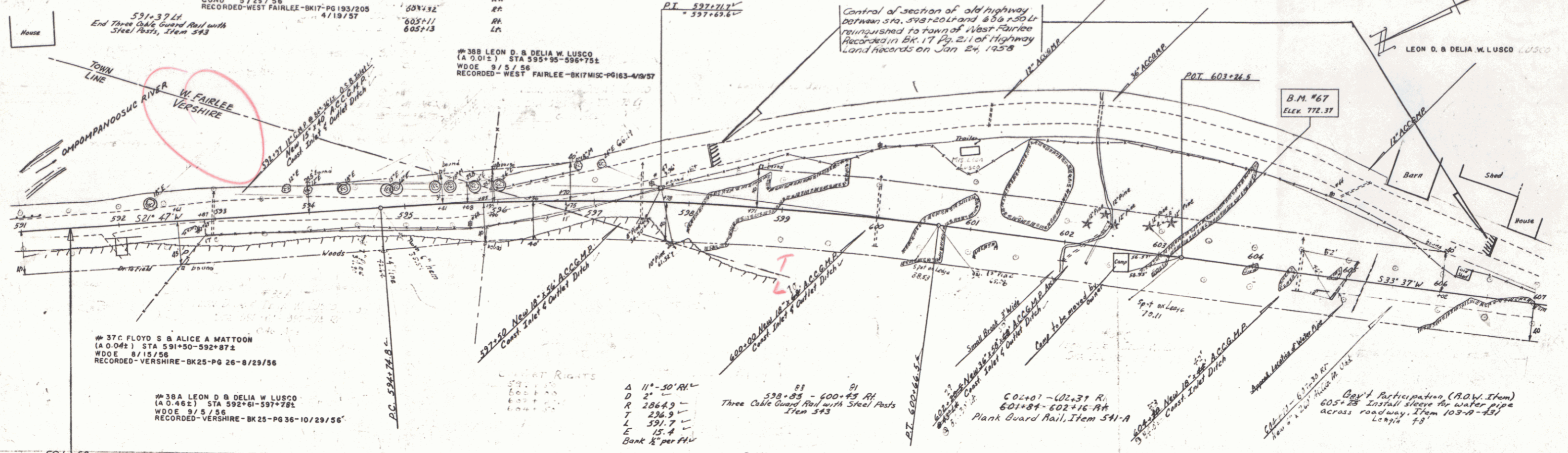
CONSTRUCT DRIVE  
S16  
592+00  
593+76  
601+87  
604+32  
605+11  
605+13

# 31C WALTER D & MARY JANE WILLIAMS  
(A 0.01%) STA 595+41-595+96.4  
COND. 5/29/56  
RECORDED - WEST FAIRLEE - BK 17-PG 193/205  
4/19/57

# 38B LEON D. & DELIA W. LUSCO  
(A 0.01%) STA 595+95-596+75.2  
W.D.E. 9/5/56  
RECORDED - WEST FAIRLEE - BK 17-MISC-PG 163-4/19/57

2.0 12.4  
597+75 - 601+75  
Three Cable Guard Rail with Steel Posts  
Item 543

114 - 144.4  
602+30 - 602+52.2  
Plank Guard Rail, Item 541-A



# 37C FLOYD S & ALICE A MATTOON  
(A 0.04%) STA 591+50-592+87.2  
W.D.E. 8/15/56  
RECORDED - VERSHIRE - BK 25-PG 26-8/29/56

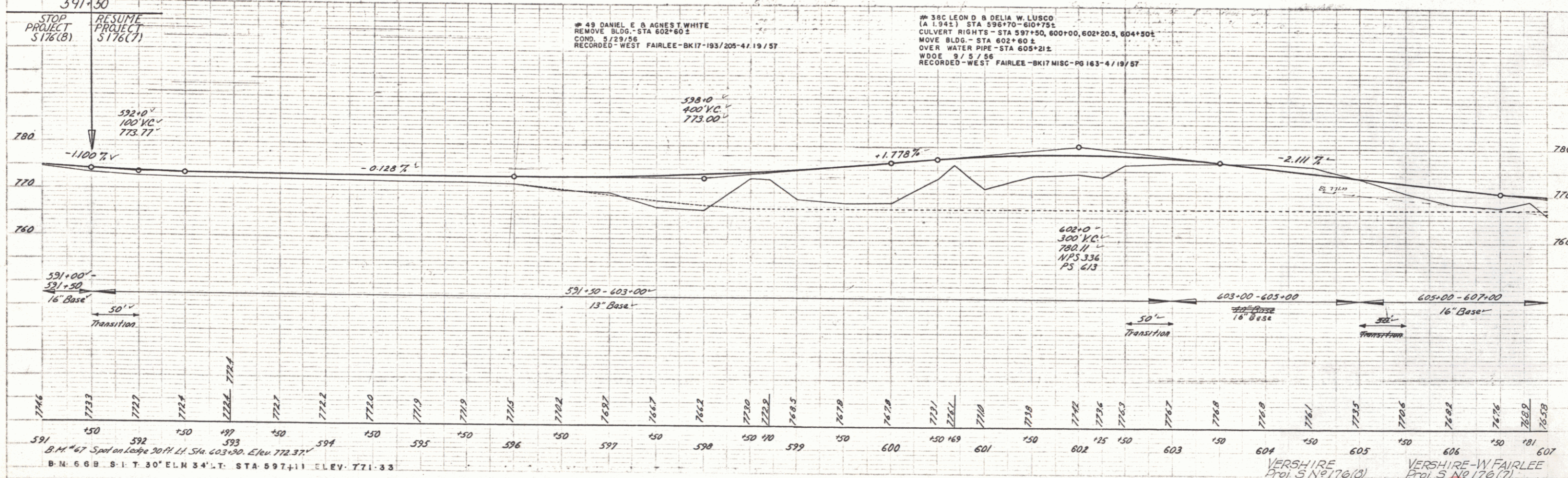
# 38A LEON D. & DELIA W. LUSCO  
(A 0.46%) STA 592+81-597+78.2  
W.D.E. 9/5/56  
RECORDED - VERSHIRE - BK 25-PG 36-10/29/56

AT RIGHTS  
Δ 11'-30" R/L  
D 2'-0" R/L  
R 2864.3  
T 236.9  
L 591.7  
E 15.4  
Bank 1/2" per Ft

81 91  
598+83 - 600+43 R/L  
Three Cable Guard Rail with Steel Posts  
Item 543

602+01 - 602+31 R/L  
601+84 - 602+16 R/L  
Plank Guard Rail, Item 541-A

605+28  
Boy's Participation (R.O.W. Item)  
Install sleeve for water pipe  
across roadway, Item 103-48-451  
Length 7.8



# 49 DANIEL E & AGNES T. WHITE  
REMOVE BLDG - STA 602+60.2  
COND. 5/29/56  
RECORDED - WEST FAIRLEE - BK 17-193/205-4/19/57

# 38C LEON D. & DELIA W. LUSCO  
(A 1.94%) STA 596+70-610+75.2  
CULVERT RIGHTS - STA 597+50, 600+00, 602+20.5, 604+50.2  
MOVE BLDG - STA 597+50, 600+00, 602+20.5, 604+50.2  
OVER WATER PIPE - STA 605+21.2  
W.D.E. 9/5/56  
RECORDED - WEST FAIRLEE - BK 17-MISC-PG 163-4/19/57

598+0  
400' V.C.  
773.00

602+0  
300' V.C.  
780.11  
NPS 336  
FS 613

B.M. #67 Spot on Loop 30' H. Lt. Sta. 603+90. Elev. 772.37'  
B.M. 66B S.I.T. 30' ELN 34' LT. STA 597+11 ELEV. 771.33

VERSHIRE  
Proj. S No 176(B)  
Sheet 15 of 23  
14 60

VERSHIRE - W FAIRLEE  
Proj. S No 176(C)  
Sheet 17 of 66  
8

# 380 LEON D. & DELIA W. LUSCO  
 (A 0.192) STA 608+19-611+42.2  
 WDOE 9/5/56  
 RECORDED - WEST FAIRLEE - BK 17 MISC - PG 163-4/19/57

45 50  
 608+36 - 610+48 LA  
 Three Cable Guard Rail with Steel Posts  
 Item 543

614+16 - 614+35 LT  
 Plank Guard Rail, Item 541-A

CONSTRUCT  
 STA 27  
 608+00  
 614+00-07  
 WDOE  
 615+77 BT  
 615+87  
 615+85  
 615+85  
 617+70

Surf  
 P.I. 616+30.0  
 Δ 616+45.3  
 D 7'  
 Rea. P.I. 616+30.0 = 616+50.0

75  
 617+58 LA  
 Begin Three Cable Guard Rail with  
 Steel Posts, Item 543

380  
 LEON D. JR. & DELIA W. LUSCO  
 STA 608+19 - 611+42.2  
 0.19 ALZ

P.O.T. 611+42  
 # 39A MAURICE E. & DORIS T. TUCKER  
 (A 0.122) STA 611+38-615+00.4  
 WDOE 8/14/56  
 RECORDED - WEST FAIRLEE - BK 17 MISC - PG 163-4/19/57

# 39B MAURICE E. & DORIS T. TUCKER  
 (A 0.082) STA 613+00-614+00.2  
 WDOE 8/14/56  
 RECORDED - WEST FAIRLEE - BK 17 MISC - PG 163-4/19/57

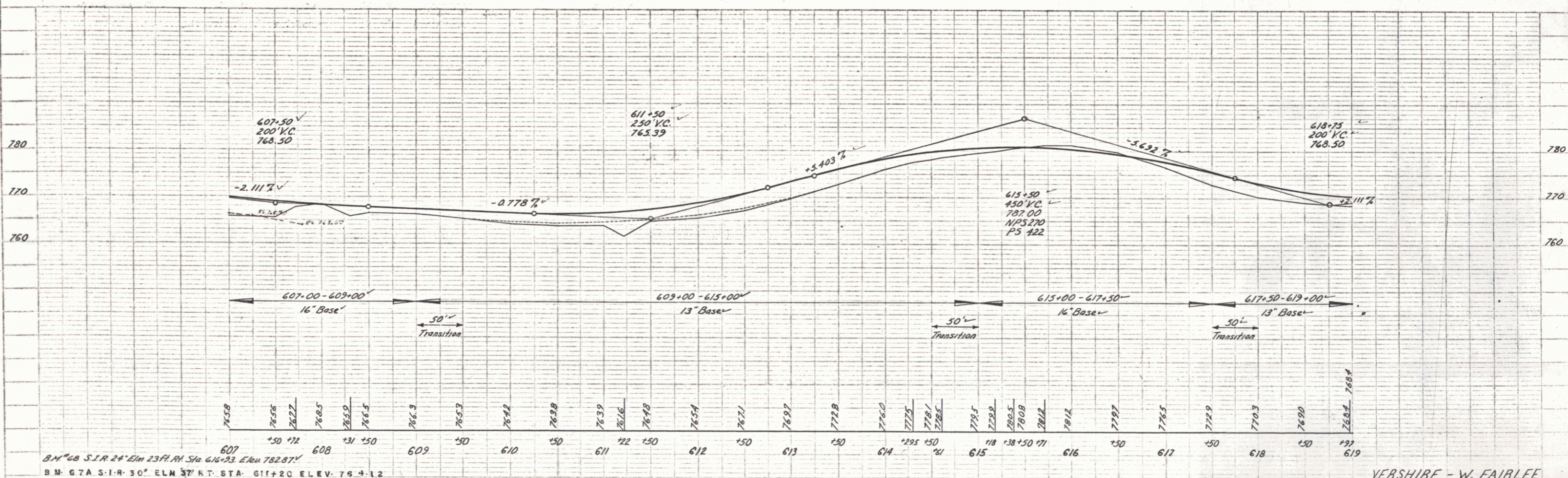
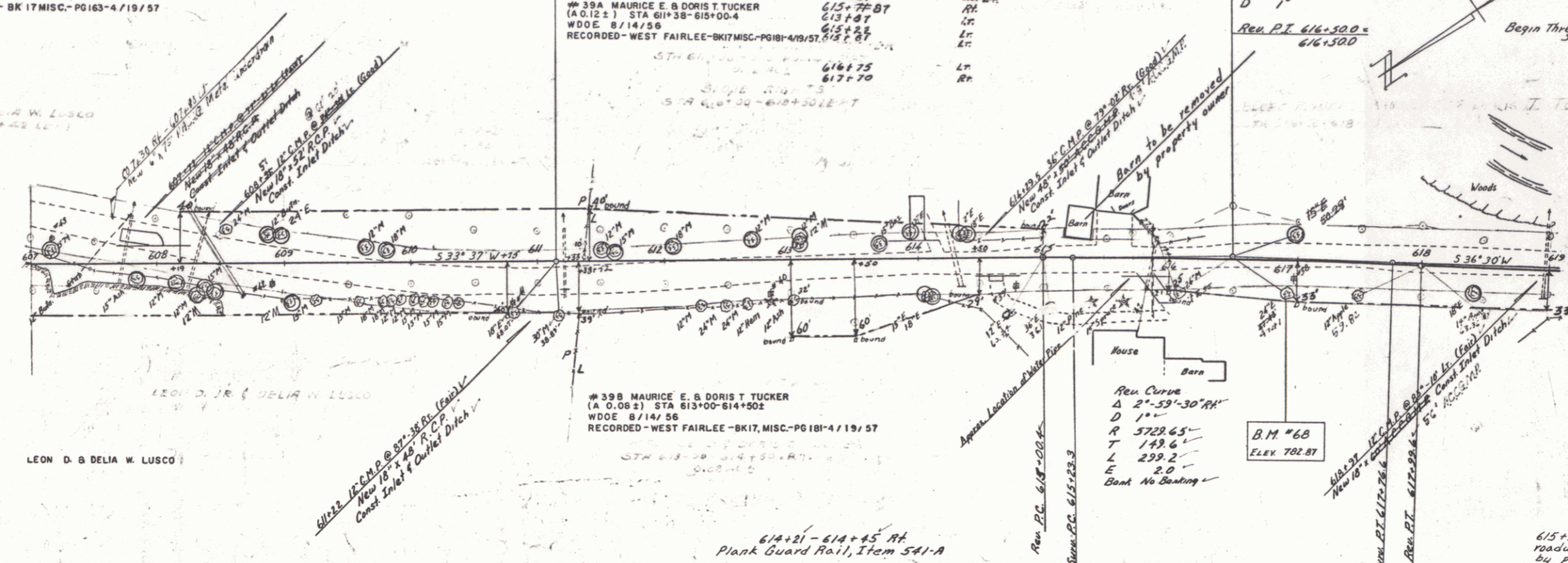
Rea. Curve  
 Δ 2°-59'-30" RH  
 D 114'  
 R 5723.65  
 T 149.6  
 L 299.2  
 E 2.0  
 Cant No Banking

B.M. #68  
 Elev 782.87

Not Best Participation  
 615+50 Install sleeve for water pipe across  
 roadway, Item 103-A. Sleeve to be furnished  
 by property owner. Length 40'

PLAN  
 REVISIONS  
 DATE BOOK  
 BY OF WORK ORDER  
 NO.

9-55  
 9-55  
 DE VEARSHIRE  
 STA  
 NOTE BOOK (SHEET) 176  
 NO. 15 OF 66 SHEETS



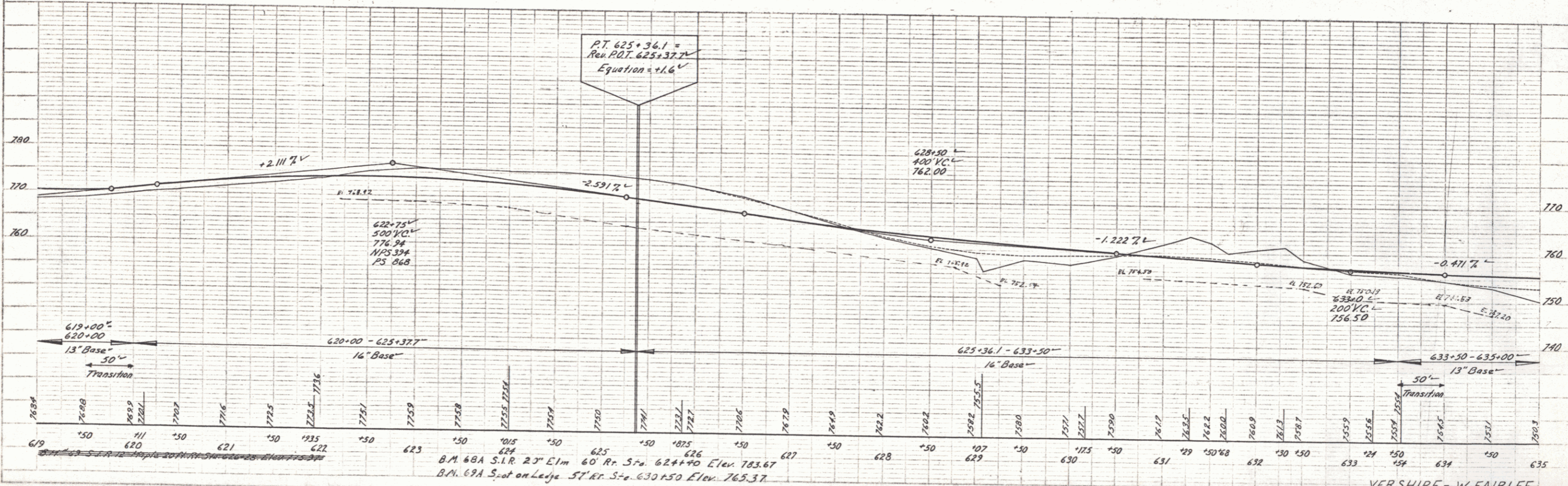
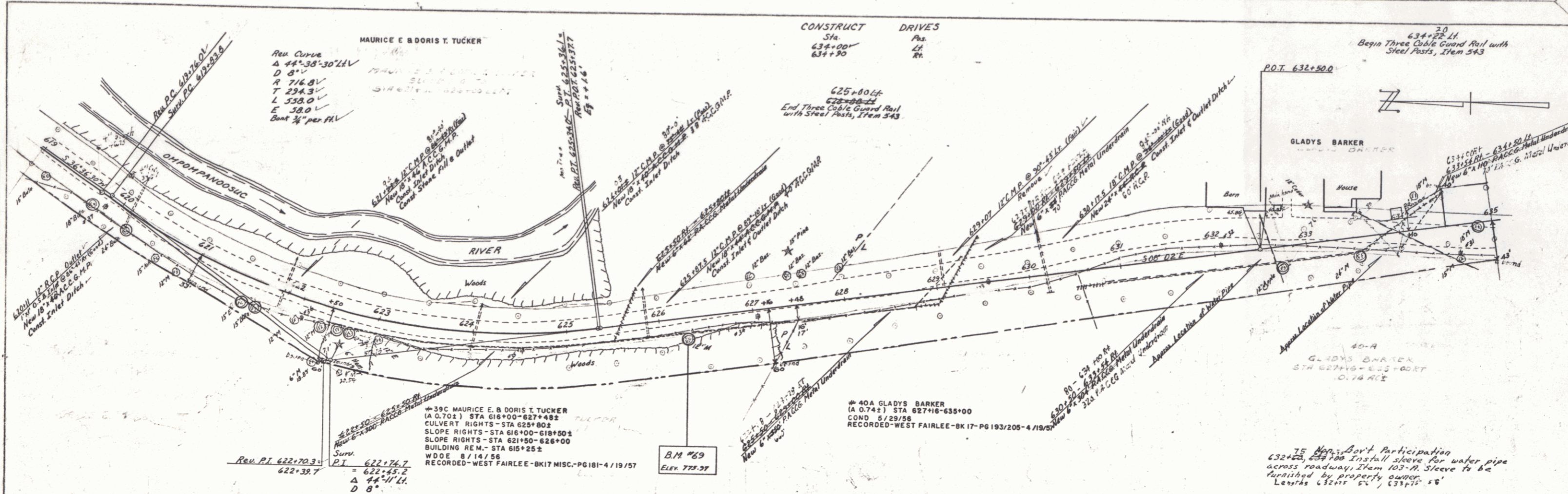
B.M. #68 S.I.R. 24' Elm 23 ft. Sta 616+23 Elev 782.87  
 B.M. #7A S.I.R. 30' Elm 37 ft. Sta 611+20 Elev 763.12

VEARSHIRE - W. FAIRLEE  
 Project S No. 176 (7)  
 Sheet 15 of 66

PLATE 5 - PLAN & PROFILE OF ROAD  
 SCALE: 1" = 40' HORIZ.  
 1" = 10' VERT.  
 P. 1500, No. 1500-C  
 MADE IN U.S.A.

PLAN  
 DATE: 8/29/58  
 DRAWN BY: W. FAIRLEE  
 CHECKED BY: W. FAIRLEE

PROFILES  
 DATE: 8/29/58  
 DRAWN BY: W. FAIRLEE  
 CHECKED BY: W. FAIRLEE



DATE: 8/29/58  
 DRAWN BY: W. FAIRLEE  
 CHECKED BY: W. FAIRLEE

VERSHIRE - W. FAIRLEE  
 Project S-46 176 (7)  
 Sheet 19 of 60 Sheets

PLAN  
 DATE  
 BY  
 CHECKED  
 APPROVED

PROFILE  
 DATE  
 BY  
 CHECKED  
 APPROVED

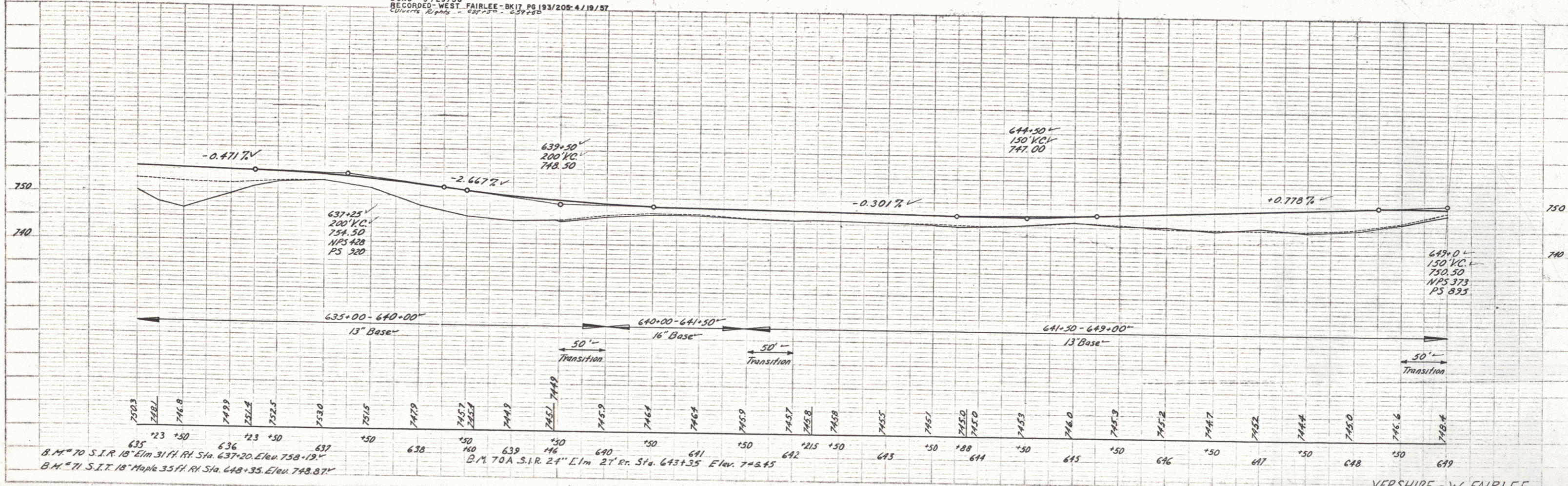
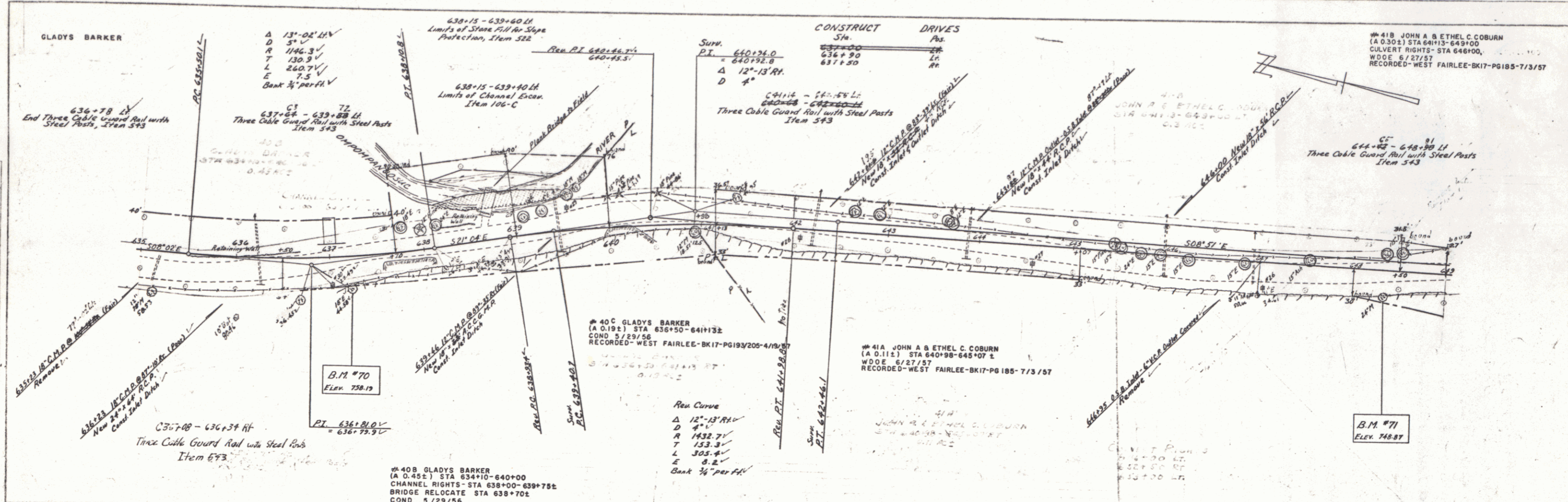
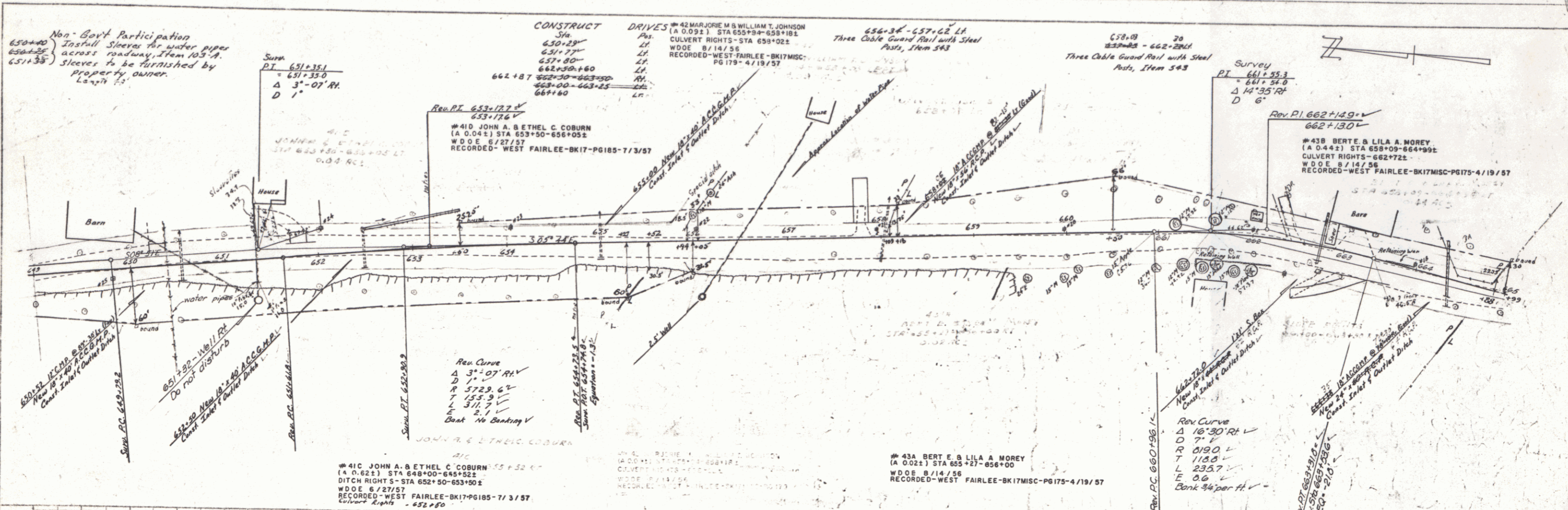


PLATE 1-100 PROFILE 6-4-1-A DRAWING  
 SCALE 1" = 10' VERT. 1" = 100' HORIZ.

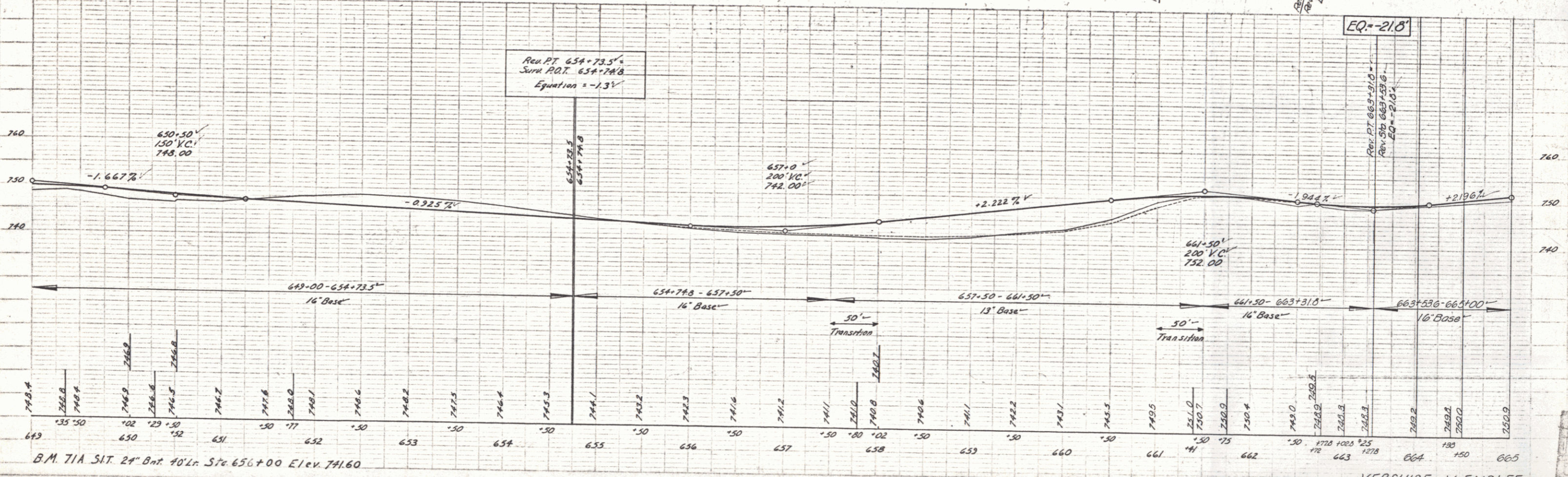
VERSHIRE - W. FAIRLEE  
 Project S-No. 176 (2)  
 Sheet 20 of 65 sheets

Non-Govt Participation  
 650+00 Install Sleeves for water pipe  
 across roadway, Item 103-A.  
 651+35 Sleeves to be furnished by  
 property owner.  
 Length 35'

PLAN  
 DATE: 10/27/57  
 DRAWN BY: W. FAIRLEE  
 CHECKED BY: W. FAIRLEE  
 SCALE: AS SHOWN



SECTION  
 DATE: 10/27/57  
 DRAWN BY: W. FAIRLEE  
 CHECKED BY: W. FAIRLEE  
 SCALE: AS SHOWN



VERSHERE - W. FAIRLEE.  
 Project S No. 176 (7)  
 Sheet (2) of 25 sheets

#44 ANNIE S. TOWLE  
 (A 0.25 ±) STA 664+88-666+12±  
 SLOPE RIGHTS-665+00-665+81±2  
 WDOE 8/30/56  
 RECORDED-WEST FAIRLEE-BK17MISC-PG157-4/19/57

CONSTRUCT DRIVES  
 STA. 665+00-670+00  
 665+00-665+00 AM  
 665+00-665+00 AM  
 673+70-673+70 AM  
 673+70-673+70 AM  
 673+70-673+70 AM  
 673+70-673+70 AM

WALTER W. & DELLA M. SMITH  
 #47 WALTER W. & DELLA M. SMITH  
 SLOPE RIGHTS-STA 668+73-672+00, 673+40-674+50±  
 REMOVE BLDG.-STA 674+05±  
 WDOE 8/29/56  
 RECORDED-WEST FAIRLEE-BK17MISC-PG159-4/19/57

#45 FRANCIS M. & ETHEL M. ASH  
 SLOPE RIGHTS-STA 665+00-665+20±  
 WDOE 6/29/56  
 RECORDED-WEST FAIRLEE-BK17MISC-PG171-4/19/57

#46A HARRISON M. CHAMBERLIN  
 (A 0.02 ±) STA 668+20-668+75 ±  
 WDOE 8/25/56  
 RECORDED-WEST FAIRLEE-BK17MISC-PG153/154-4/19/57

#47 WALTER W. & DELLA M. SMITH  
 SLOPE RIGHTS-STA 668+73-672+00, 673+40-674+50±  
 REMOVE BLDG.-STA 674+05±  
 WDOE 8/29/56  
 RECORDED-WEST FAIRLEE-BK17MISC-PG159-4/19/57

Non-Gov't Participation  
 668±± Install sleeve for water pipe  
 across roadway. Item 103-A. Sleeve  
 to be furnished by property owner  
 Length 40'

