

380 LEON D. & DELIA W. LUSCO
 (A 0.192) STA. 608+19-611+42.2
 WDOE 9/5/56
 RECORDED - WEST FAIRLEE - BK 17 MISC. - PG 163-4/19/57

45 50
 608+36 - 610+00 LT
 Three Cable Guard Rail with Steel Posts
 Item 543

614+16 - 614+35 LT
 Plank Guard Rail, Item 541-A

CONSTRUCT
 STA. 27
 608+00
 614+00-07
 WDOE
 615+77 BT
 615+87
 615+85
 615+87
 RECORDED - WEST FAIRLEE - BK 17 MISC. - PG 163-4/19/57

Surf
 P.I. 616+30.0
 Δ 616+45.3
 D 7'
 REAR P.I. 616+30.0
 616+50.0

75
 617+58 LT
 Begin Three Cable Guard Rail with
 Steel Posts, Item 543

38-0
 LEON D. JR. & DELIA W. LUSCO
 STA. 608+19 - 611+42.2
 0.19 ALZ

P.O.T. 611+42.2
 # 39A MAURICE E. & DORIS T. TUCKER
 (A 0.122) STA. 613+38-615+00.4
 WDOE 8/14/56
 RECORDED - WEST FAIRLEE - BK 17 MISC. - PG 163-4/19/57

39B MAURICE E. & DORIS T. TUCKER
 (A 0.082) STA. 613+00-614+00.2
 WDOE 8/14/56
 RECORDED - WEST FAIRLEE - BK 17 MISC. - PG 163-4/19/57

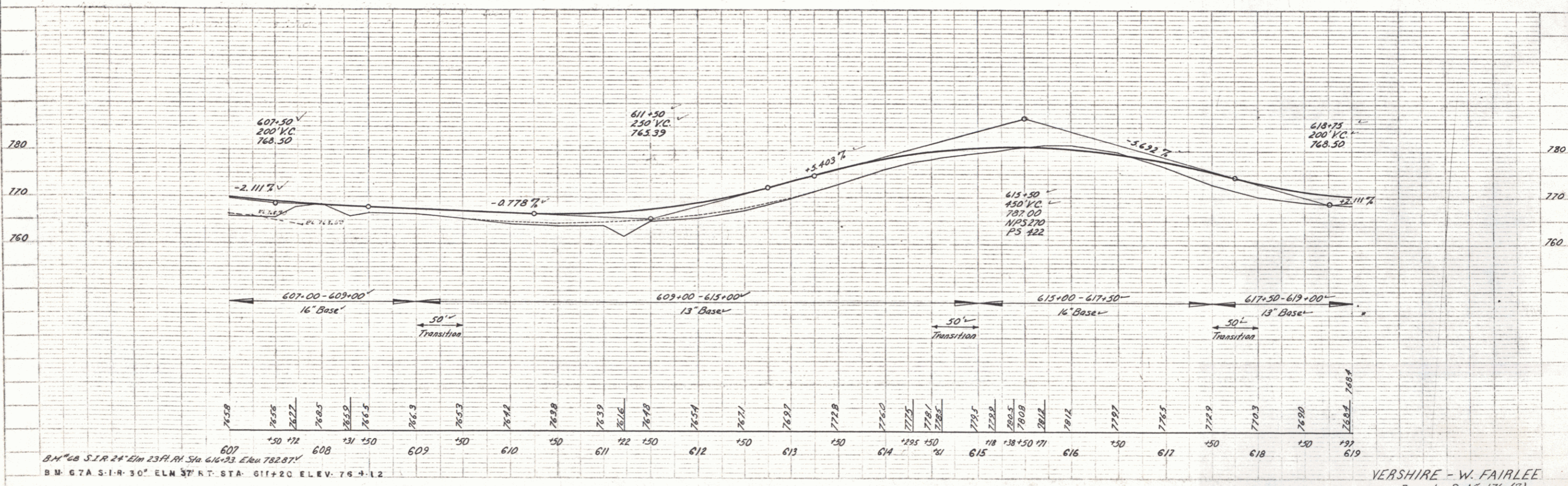
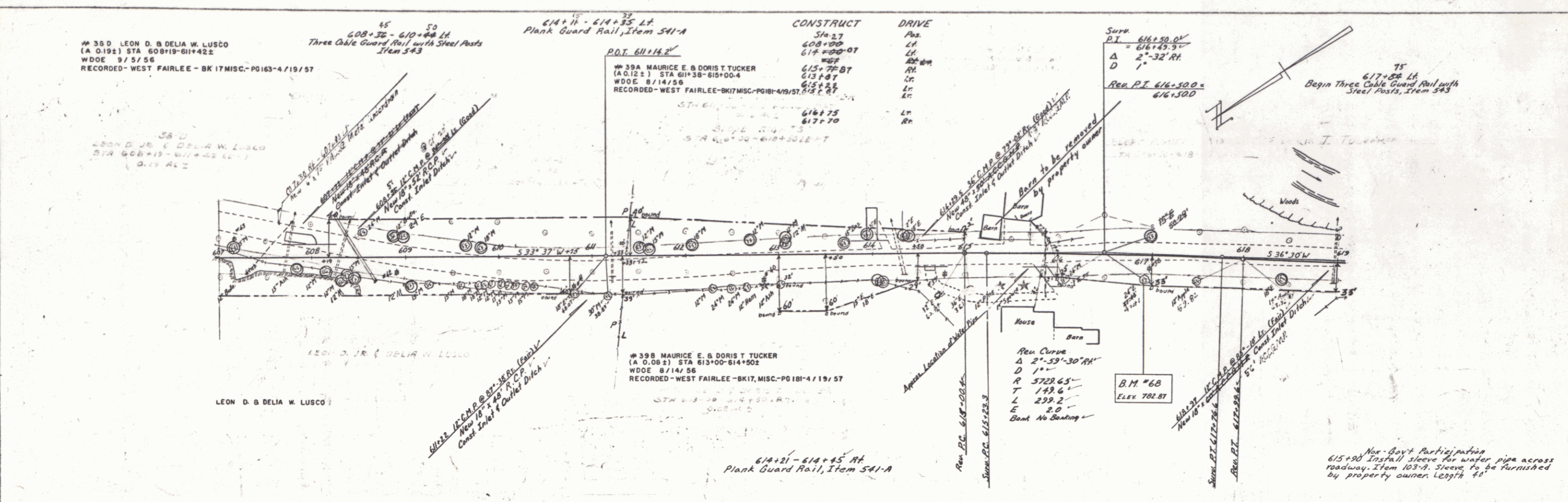
REAR CURVE
 Δ 2°-59'-30" RH
 D 114'-0"
 P 5723.65
 T 149.6
 L 299.2
 E 2.0
 Cant No Banking

B.M. #68
 ELEV. 782.87

Not Best Participation
 615+50 Install sleeve for water pipe across
 roadway, Item 103-A. Sleeve to be furnished
 by property owner. Length 40'

PLAN
 FAIRLEE
 DATE BOOK
 SHEET NO.
 OF SHEETS

9-55
 10-55
 DE LUSCO
 DATE BOOK
 SHEET NO.
 OF SHEETS



B.M. #68 S.I.R. 24' Elm 23 1/4" RH Sta. 616+23 Elev. 782.87
 B.M. #7A S.I.R. 30' Elm 37' RT Sta. 611+20 Elev. 763.12

VERSHIRE - W. FAIRLEE
 Project S No. 176 (7)
 Sheet 15 of 66

PLATE 5 - PLAN & PROFILE OF ROAD
 SCALE: 1" = 40' HORIZ.
 1" = 10' VERT.