

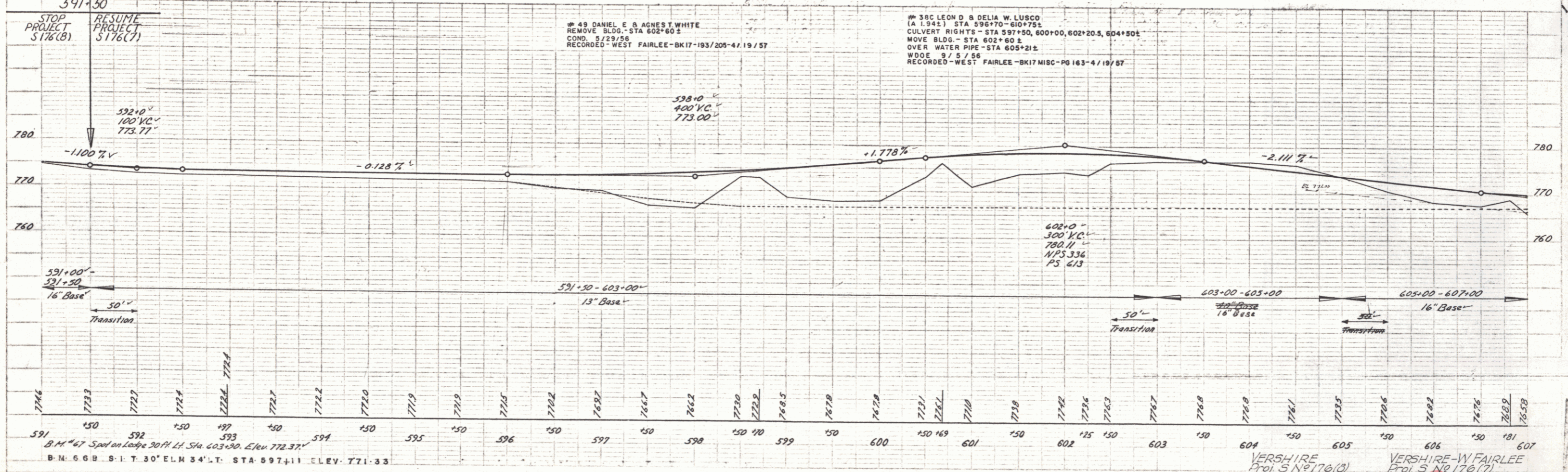
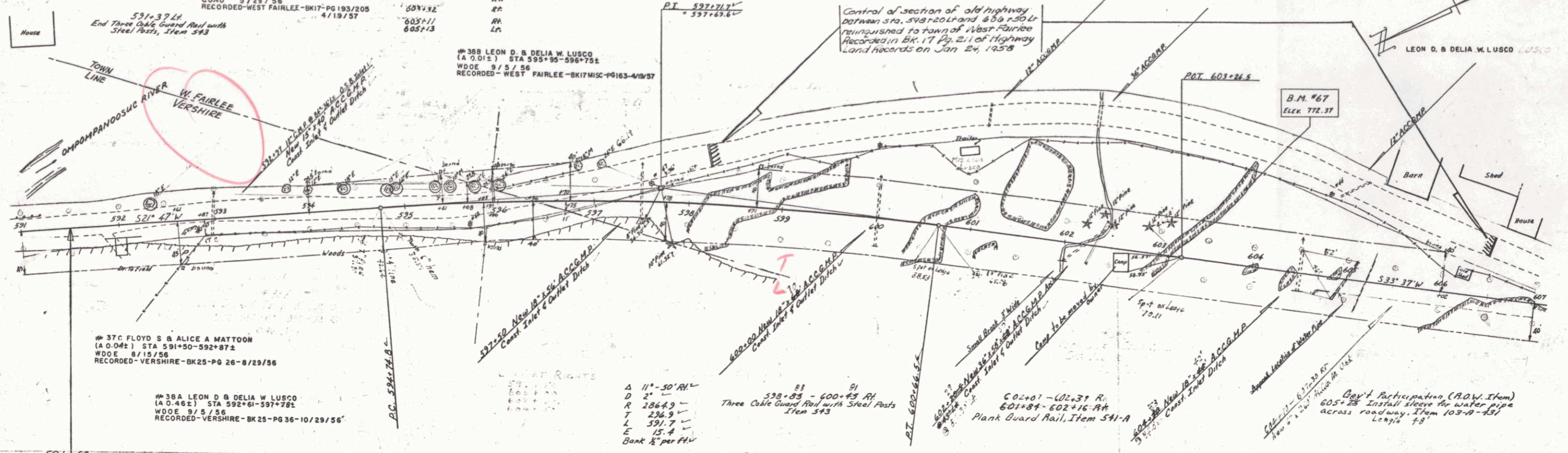
#31 D. WALTER D & MARY JANE WILLIAMS
 (A 0.02%) STA 594+00-595+68.2
 COND. 5/29/56
 RECORDED - VERSHIRE - BK 24-390/411-6/1/56

CONSTRUCT DRIVE
 S16
 592+00
 593+76
 601+87
 604+32
 605+11
 605+13

#388 LEON D. & DELIA W. LUSCO
 (A 0.01%) STA 595+95-596+75.2
 W.D.E. 9/5/56
 RECORDED - WEST FAIRLEE - BK 17 MISC - PG 163-4/19/57

Control of section of old highway
 between Sta. 598+50 and 600+00
 relinquished to town of West Fairlee
 recorded in BK. 17 Pg. 21 of Highway
 Land Records on Jan 24, 1958

Plank Guard Rail, Item 541-A
 602+30 - 602+52.27



PLAN
 DATE: 10/29/56
 DRAWN BY: [illegible]
 CHECKED BY: [illegible]

PROFILE
 DATE: 10/29/56
 DRAWN BY: [illegible]
 CHECKED BY: [illegible]

B.M. #67 Spot on Loop 30 ft Lt. Sta. 603+90. Elev. 772.37
 B.M. 66B S.I.T. 30' ELM 34' LT. STA 597+11 ELEV. 771.33

VERSHIRE
 Proj. S No 176(B)
 Sheet 15 of 23
 14 60

VERSHIRE - W FAIRLEE
 Proj. S No 176(C)
 Sheet 17 of 66
 8