

CONSTRUCT DRIVE
 Sta. 514+25 RM
 517+50 LT
 524+17 LT

2C 85
 519+28 - 520+85 LH
 Three Cable Guard Rail with Steel Posts
 Item 543

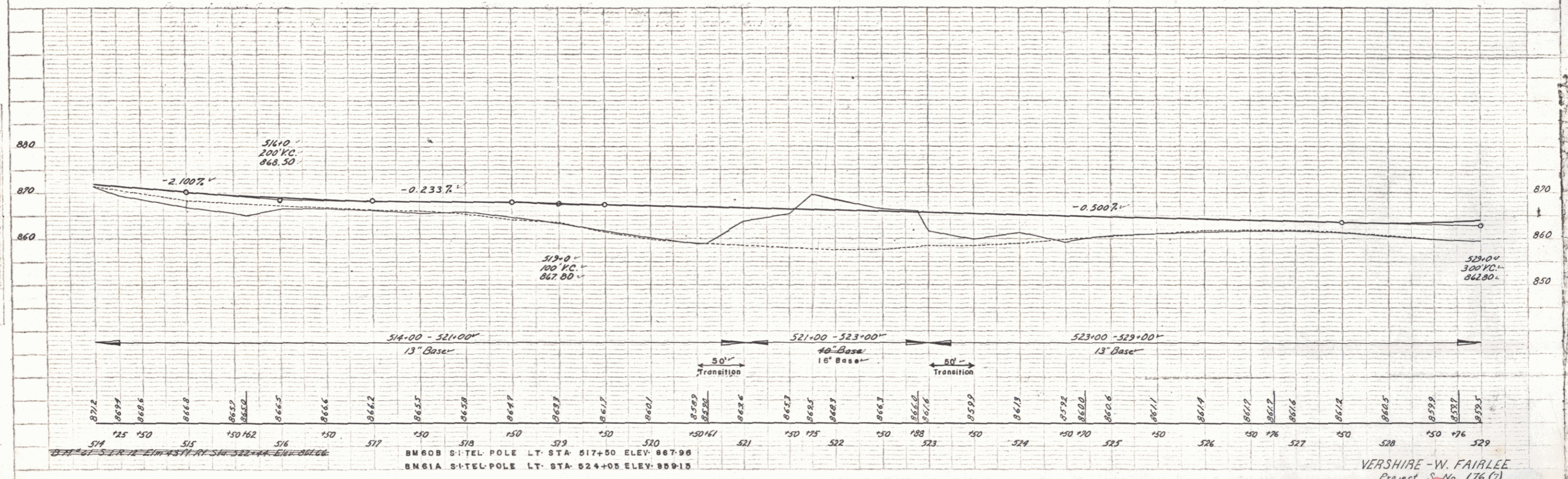
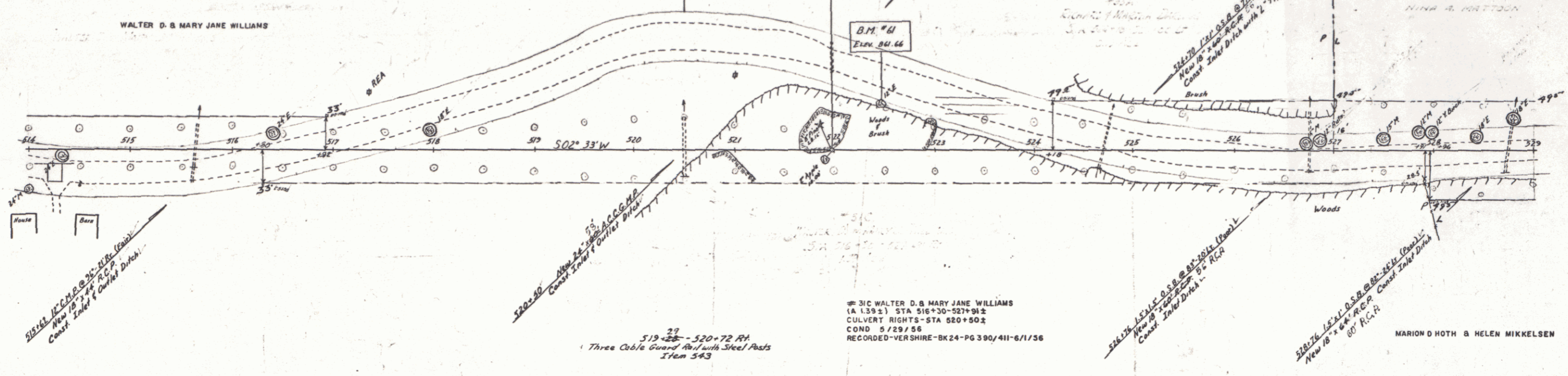
524+00 LH
 522+34-2A
 Begin Three Cable Guard Rail
 with Steel Posts, Item 543
 #33A RICHARD & MARTHA DARLING
 (A.D. 132) STA 524+18-527+00
 WDOE 8/29/56
 RECORDED-VERSHIRE-BK 25-PG 33-9/8/56

#33A CARROLL F. NINA A. & FLOYD S. MATTOON
 (A.D. 582) STA 527+00-538+50
 WDOE 8/15/56
 RECORDED-VERSHIRE-BK 25-PG 28/29-8/29/56

WALTER D. & MARY JANE WILLIAMS

#31C WALTER D. & MARY JANE WILLIAMS
 (A.D. 1392) STA 516+30-527+94±
 CULVERT RIGHTS-STA 520+50±
 COND 5/29/56
 RECORDED-VERSHIRE-BK 24-PG 390/411-6/1/56

MARION DOTH & HELEN MIKKELSEN



PLAN
 DATE BOOKED
 DRAWN BY
 CHECKED BY
 IN CHARGE

PROFILE
 DATE BOOKED
 DRAWN BY
 CHECKED BY
 IN CHARGE

PLATE 1-PLAN PROFILE & P.A.A.S. DRAWING
 MULTIPLE COPIES FOR RECORD

VERSHIRE-W. FAIRLEE
 Project No. 176 (7)
 Sheet 12 of 66 Sheets