

INDEX OF SHEETS

- 1 TITLE PAGE
- 2 TYPICAL CROSS SECTION OF IMPROVEMENT (SHOULD SHOW START OF CURVE APPROX. 100 FT)
- 3 BANKING & WIDENING TABLES RS 56-1
- 4 DRAINAGE & ITEM QUANTITY SHEET
- 5-6 EARTHWORK SHEETS
- 7-10 PLAN & PROFILE SHEETS
- 11 DETAILS OF 10' X 10' RCB STA. 561+73
- 12 ROADWAY STANDARD SHEET RS 56-3
- 13 " " " RS 56-4
- 14 " " " RS 56-6
- 15 " " " RS 56-10
- 16 " " " RS 56-12
- 17-34 CROSS SECTIONS

STATE OF VERMONT
DEPARTMENT OF HIGHWAYS

PROPOSED IMPROVEMENT

TOWN OF SHELDON

COUNTY OF FRANKLIN

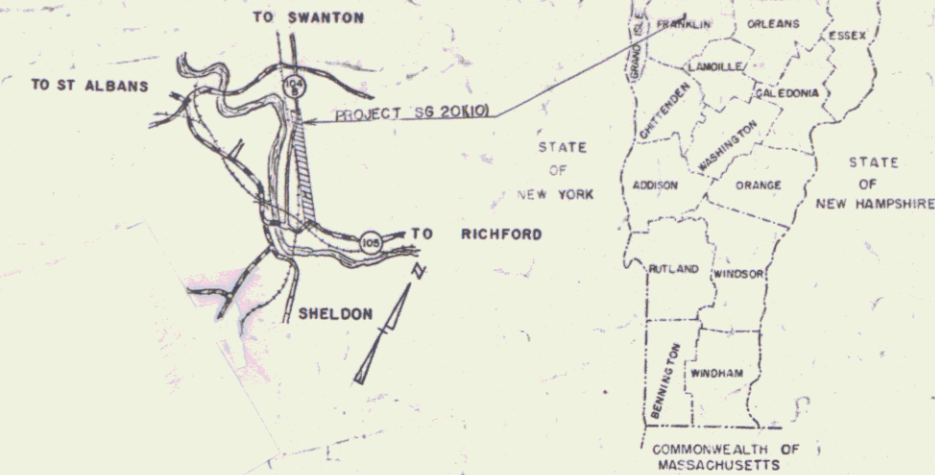
ROUTE 104-B

SWANTON-ENOSBURG ROAD

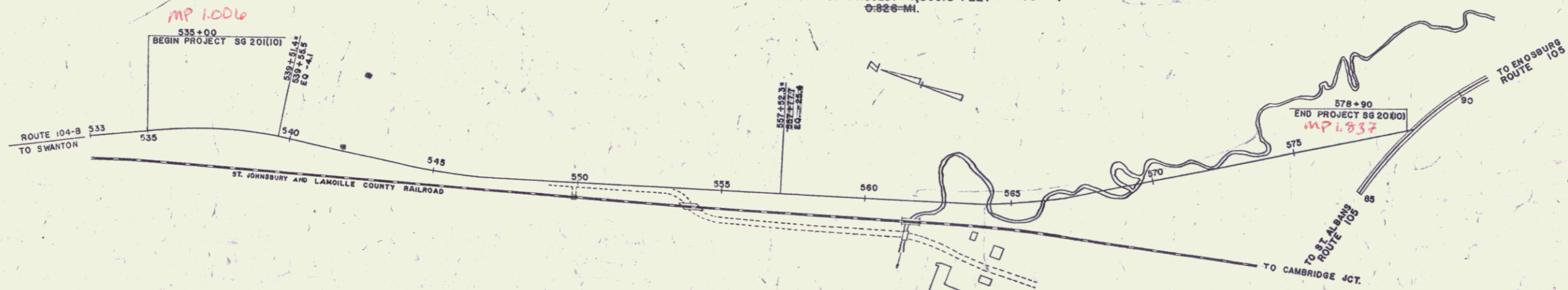
BEGINNING AT A POINT APPROXIMATELY 1.026 MILES SOUTH-EASTERLY OF THE HIGHGATE-SHELDON TOWN LINE AND EXTENDING SOUTHEASTERLY

0.826 MI.
4,365 FT.
0.8307 MI.
LENGTH OF PROJECT 4,360.5 FEET = 0.8307 MI.
0.826 MI.

FED. ROAD DISTRICT NO.	STATE	PROJECT NO.	SHEET NO.	TOTAL SHEETS
1	VT	56 20(10)	1	34



PROJECT NAME & NUMBER	TYPE	PAVEMENT AREA
SHELDON 56 20(10)	RECORD PLANS	10,705 SQ. YD.
MATERIALS		
SUBBASE OF GRAVEL - GREEN PT. ENOSBURG, VT.	ACCGA PIPE - NEW ENGL. METAL PIPE CO.	
SUBBASE OF SAND - SHELDON TOWN PT.	" " - LONE STAR	
CUTBACK ASPHALT - JOSEPH YACOVINI ENDOV. N.E.	CONC. PAVEMENTS - SWANTON LINE WORKS	
REINFORCING STEEL - VT. STRUCTURAL STEEL BURLY	" LE GUARDRAIL - AMER. STEEL WIRE	
CONTRACTOR - CALEDONIA SAND & GRAVEL CO. INC.	CONTRACT DATED - FEB. 12, 1958	
RESIDENT ENGR - HERBERT J. WASHNER	CONTRACT STARTED - APRIL 24, 1958	
INSPECTOR -	CONTRACT COMPLETED - SEPT. 8, 1958	
RECORD PLANS - E.C. GAYNES III	CONTRACT ACCEPTED - SEPT. 8, 1958	



COUNTY	FRANKLIN
TOWN	SHELDON
FENCE	AS SHOWN
STONE	AS SHOWN
UNFENC.	AS SHOWN
GUARD	AS SHOWN
TRAVE	AS SHOWN
RAILR.	AS SHOWN
RETAI.	AS SHOWN
CENTE.	AS SHOWN
SURVE	AS SHOWN
CULVE.	AS SHOWN
DROP	AS SHOWN
TROLL	AS SHOWN
POWER	AS SHOWN
TELEF.	AS SHOWN
TREES	AS SHOWN
HEDGE	AS SHOWN

GROUND ELEVATION	DATE	BY
533+00	1957	E.C. GAYNES III
540+00	1957	E.C. GAYNES III
550+00	1957	E.C. GAYNES III
560+00	1957	E.C. GAYNES III
570+00	1957	E.C. GAYNES III
578+90	1957	E.C. GAYNES III

SCALES

TITLE	1" = 200'
TYPICAL	1" = 2'
PLAN	1" = 50'
PROFILE HORIZONTAL	1" = 50'
PROFILE VERTICAL	1" = 10'
CROSS-SECTIONS	1" = 5'

APPROVED RESIDENT ENGINEER DATE Oct 27 1957	APPROVED CONSTRUCTION ENGINEER DATE 12-31-57	APPROVED BRIDGE ENGINEER DATE Oct 30 1957	APPROVED DISTRICT ENGINEER DATE Oct 31 1957	APPROVED HIGHWAY ENGINEER DATE Oct 30 1957	APPROVED COMMISSIONER DATE October 31 1957
---	--	---	---	--	--

THESE PLANS ARE SUBJECT TO SUCH REVISIONS AS MAY BE REQUIRED BY THE BUREAU OF PUBLIC ROADS OR THE COMMISSIONER OF HIGHWAYS.

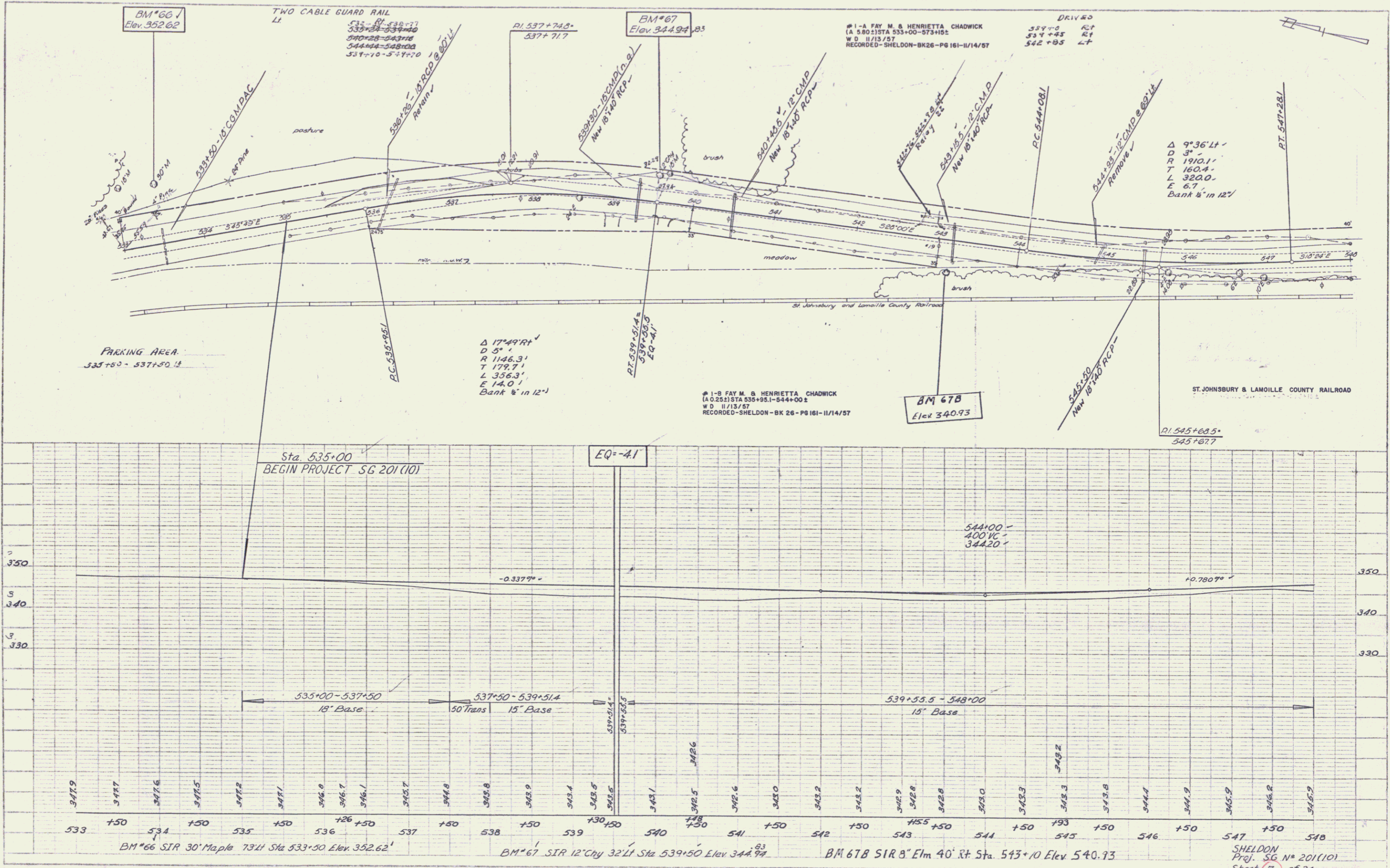
CONSTRUCTION IS TO BE CARRIED ON IN ACCORDANCE WITH THE PLANS AND THE STANDARD SPECIFICATIONS FOR HIGHWAY AND BRIDGE CONSTRUCTION OF JANUARY 1956 SUBMITTED TO THE BUREAU OF PUBLIC ROADS AS APPROVED JULY 5, 1956, INCLUDING ALL SUBSEQUENT APPROVED REVISIONS AND SUCH REVISED SPECIFICATIONS AND SPECIAL AS ARE SUBMITTED WITH THE PLANS.

Pin # 00R444
Route VT 78

DEPARTMENT OF COMMERCE BUREAU OF PUBLIC ROADS
APPROVED _____ DATE _____
DISTRICT ENGINEER
PROJECT 56 NO. 20(10)
SHEET 1 OF SHEETS 34

PLAN SHEET
 DATE BOOK
 ALPHABETICALLY
 BY
 DATE
 BY
 DATE
 BY
 DATE

PROFILE SHEET
 DATE BOOK
 ALPHABETICALLY
 BY
 DATE
 BY
 DATE
 BY
 DATE



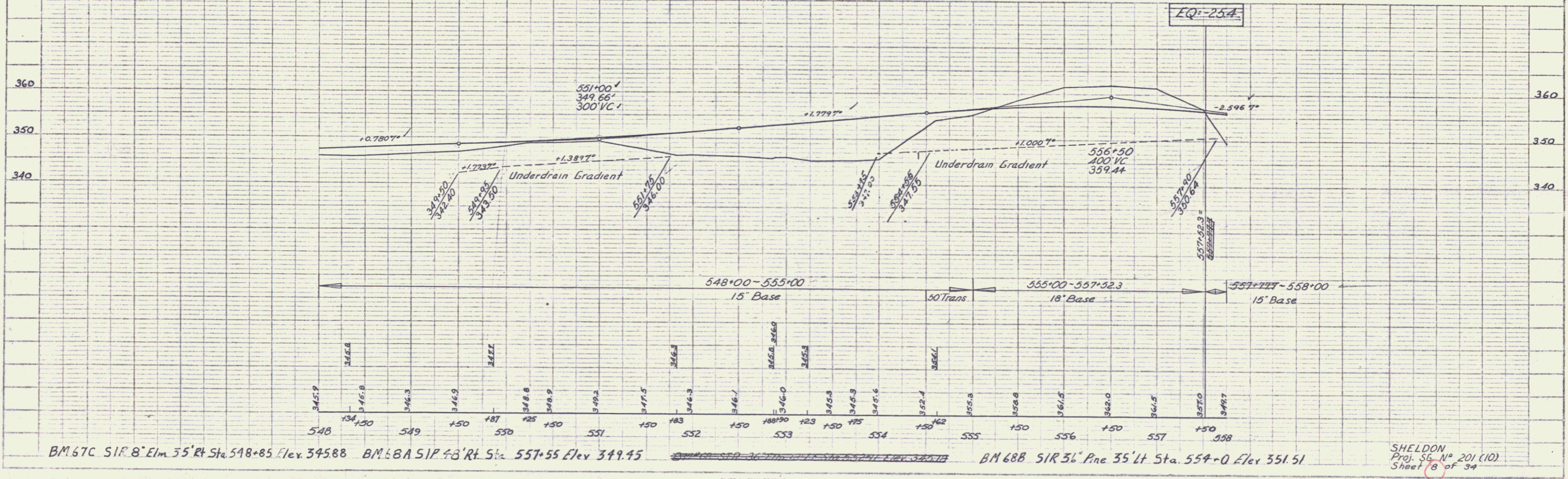
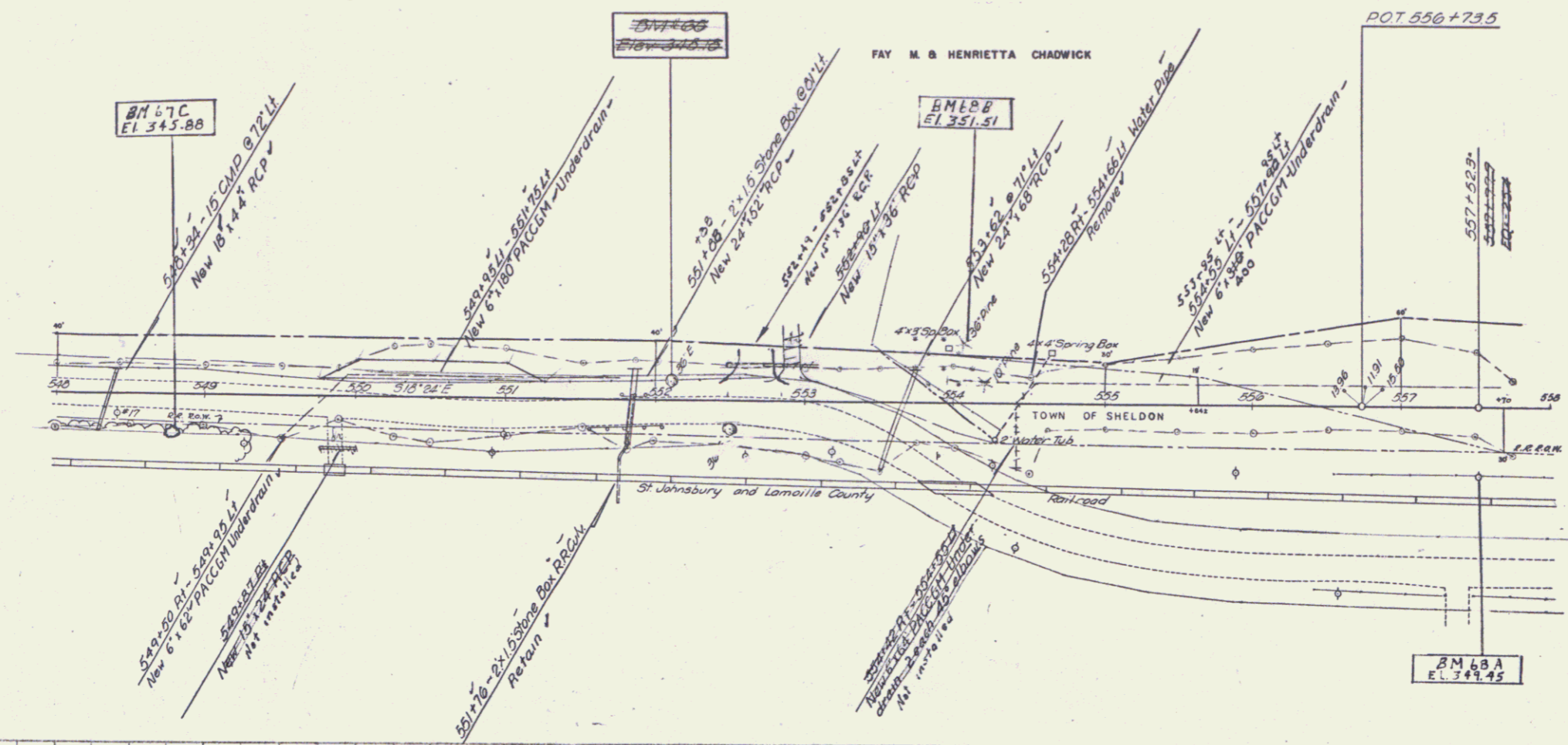
TWO CABLE GUARD RAIL
 LI RT
 551+56-552+04
 552+98-554+15
 551+85-552+14
 551+70-552+15

PARKING AREA
 549+75-551+25 RT

CONSTRUCT DRIVE
 LI RT
 552+98 549+85

PLAN	DATE	BY
REVISION		
NOTE BOOK		
NO.		
DATE		
BY		
DATE		
BY		
DATE		

PROFILE	DATE	BY
REVISION		
NOTE BOOK		
NO.		
DATE		
BY		
DATE		
BY		
DATE		

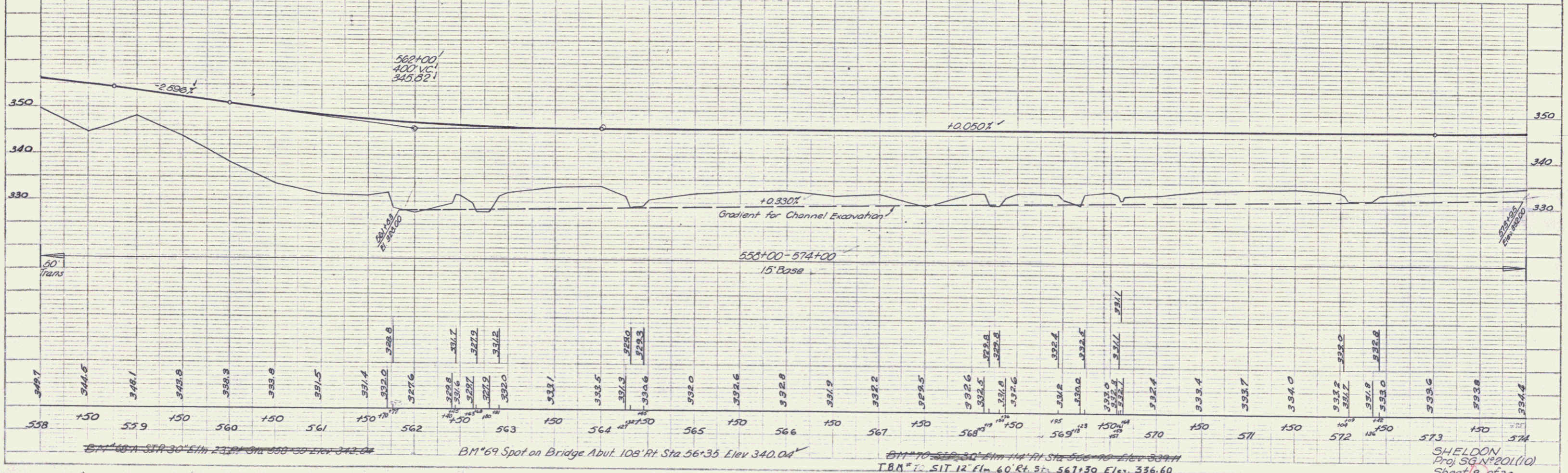
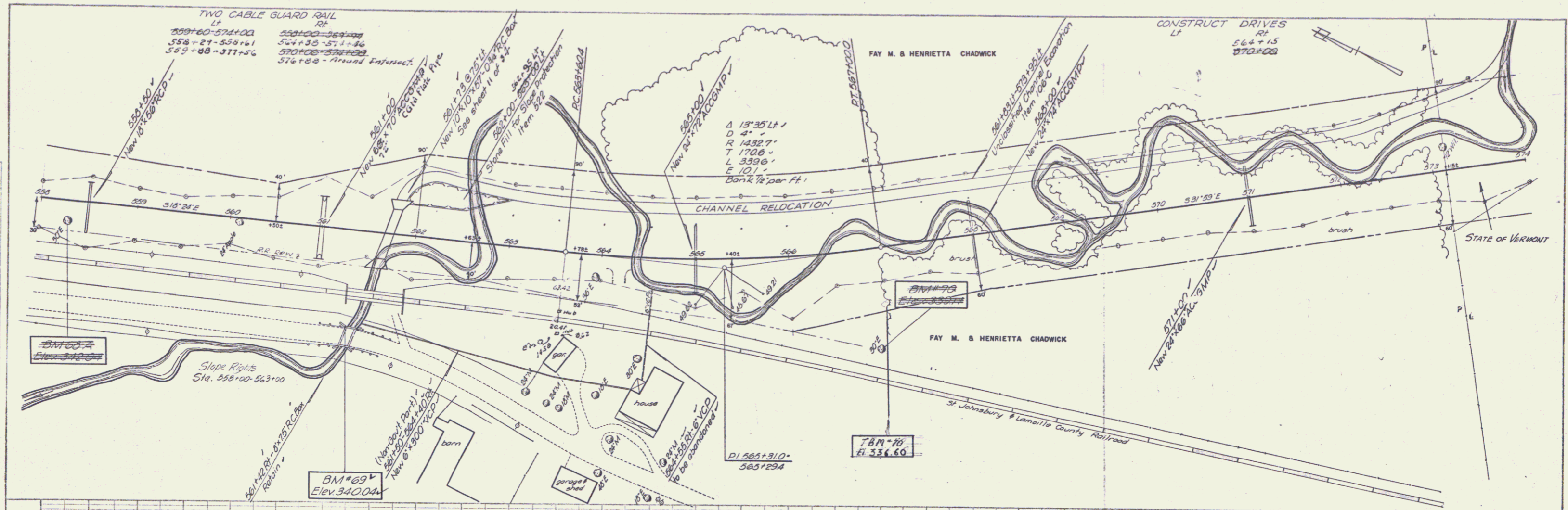


BM 67C SIR 8' Elm 35' Rt Sta 548+85 Elev 345.88 BM 68A SIR 4.8' Rt Sta 557+55 Elev 349.45 BM 68B SIR 36' Pine 35' Lt Sta 554+0 Elev 351.51

SHELDON
 Proj. 56 N° 201 (10)
 Sheet 18 of 34

PLAN
 DATE: 10/1/03
 DRAWN BY: J. L. LEBLANC
 CHECKED BY: C. E. H.
 SCALE: 1" = 40'

PROFILE
 DATE: 10/1/03
 DRAWN BY: J. L. LEBLANC
 CHECKED BY: C. E. H.
 SCALE: 1" = 40'



BM 69 Spot on Bridge Abut. 108' Rt Sta 56+35 Elev 340.04

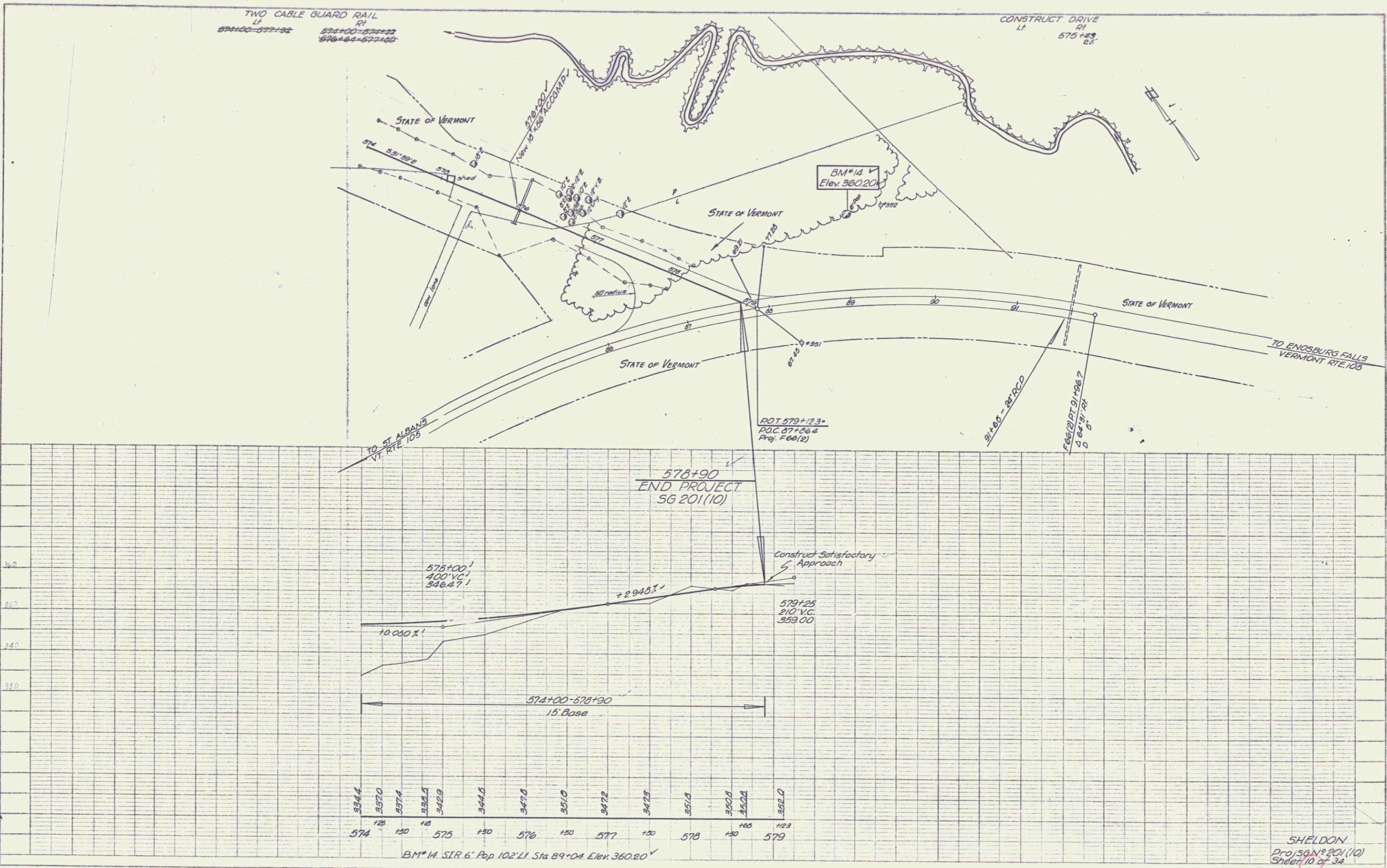
BM 69 Spot on Bridge Abut. 108' Rt Sta 56+35 Elev 340.04

BM 70 SIT 12' Elm 60 Rt Sta 567+30 Elev 336.60

SHELDON
 Proj SG No 201(10)
 Sheet 9 of 34

PLAN
 DATE: _____
 DRAWN BY: _____
 CHECKED BY: _____
 IN CHARGE: _____

PROFILE
 DATE: _____
 DRAWN BY: _____
 CHECKED BY: _____
 IN CHARGE: _____



SHELDON
 Proj. SG N° 201(10)
 Sheet 10 of 34